



# Mountain Aire

LUXURY MOTORCOACH





## Breathe It In

Take luxury with you everywhere you go in the 2022 Mountain Aire. The coach is ready from the start, with Newmar's industry-first innovation Comfort Drive™ steering system that makes navigating even small roads easier. There's also Mobileye® lane departure tracking which comes standard, tire pressure monitoring, OnGuard™ collision mitigation technology with adaptive cruise control, and electronic stability control. And with the industry-exclusive full-paint Masterpiece Finish™, it's the perfect combination of form and function.





Beckford full-paint Masterpiece Finish™

## Alpine Accommodations

Take the mountains with you everywhere when you travel in the 2022 Mountain Aire. Built exclusively on the Spartan® K3 Tag Axle chassis, it carries an impressive 500 horsepower and 1,695 lb./ft. of torque. The Mountain Aire is available in six floor plans, including one new for 2022, which makes it easy to find the option that's right for you.

## Your Kind of Place

Enjoy your own, private ski chalet whether you're in the mountains or on a beach, because the Mountain Aire is loaded with luxurious appointments. For entertainment, a retractable Samsung® 50" 4K LED TV is paired with a Bose® soundbar and subwoofer. Enjoy them from reclining theater seats, or a variety of other seating options. Radiant electric heat through the tile floors helps keep things cozy in cooler climates, while three 15M Penguin™ heat pump central air conditioners with wall-mounted sensors do so in warmer temps.

And with such large windows, there's plenty of natural light to illuminate the natural beauty of the interior.



*Floor plan 4543 with Beckford décor  
and Toffee high-gloss cabinetry*



## Enjoy Your Arrival

Even driving the Mountain Aire is a joy. The captain's and passenger's seats of the Mountain Aire are heated and upholstered in Ultraleather®, but there are other amenities as well. A new 10" Xite dash monitor system includes a Nav-N-Go navigation system, which uses the coach's dimensions to plan the best routes. There's a navigation monitor on the passenger side as well. Haptic feedback keeps the driver aware of surroundings, plus a 360-degree camera system with predictive grid lines and tri-view rear camera lets you see all around you. The passenger also has a queen-size seat with a workstation and footrest—perfect for getting a little work done while you're on the road. Speaking of work: floor plan 4589—new for 2022—includes a dedicated work area with a desk, chair, and storage.



## On Site Dining

The galley of the Mountain Aire offers fine dining at your leisure, with a fully equipped kitchen. Appliances include a Whirlpool® refrigerator, a 30" convection microwave, and a three-burner cooktop. You can add an optional dishwasher, or even a kitchen window to let in more natural light. Hardwood maple cabinetry surround the super-polished solid surface countertops and feature raise-panel doors with soft-close hinges. And whether you're dining in or al fresco, a large pantry offers you all the space to whip up the meal of your dreams.





## Sound Sleep

No matter what your day entails, there's something special about a night's rest in the Mountain Aire master suite. Rear and mid-coach bedroom floor plans are available for whatever best suits your needs. Whichever you choose, you'll find a dresser with six large drawers, super-polished countertops, and two wardrobes for loads of storage space. Enjoy a little late-night entertainment with a Samsung® LED TV. Here, you'll also find an LCD touchscreen control panel that oversees many of the coach's functionalities. And of course, there's a king-size bed with a plush pillow-top mattress—or you can upgrade to a Sleep Number® adjustable mattress.



## Respite and Relaxation

The 2022 Mountain Aire offers several master bath options, depending on floor plans. On 41' models, you'll find a residential-sized 40" x 32" shower, and in some 45' models you'll find a large 50" x 34", all with tiled walls and glass doors. Every shower has a fold-down seat and three-pump soap dispenser. Warm water stays flowing with an Aqua Miser® shower system, and an optional laundry station offers a stacked washer and dryer to make laundry day a breeze. There's also a wardrobe with a cedar-paneled wall. The mid-ship half-bath is available on most floor plans, and offers the same comforts to guests.







## Advancing the Outdoors

Whether you're inside the Mountain Aire or outside, it's easy to enjoy it. Girard® Nova side awnings provide ample shade, and a Dometic® freezer on a pull-out tray keeps everyone stocked on cool drinks. Add the optional outdoor entertainment package for a Samsung® TV and soundbar. Speaking of technology, the Mountain Aire also features a new app that allows you to control many of the functions of the coach from your personal device. A lighted exterior baggage compartment, plus an optional pass-through storage tray, offer easy access to everything you're carrying. Power baggage door locks and keyless entry with a touch pad and doorbell offer plenty of security. And they're all powered by a 12.5 kW Cummins Onan® diesel generator.

## EXTERIORS



### AVALON EXTERIOR

Awning Color: Charcoal Tweed



### BECKFORD EXTERIOR

Awning Color: Charcoal Tweed



### HAMDEN EXTERIOR

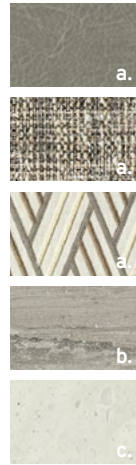
Awning Color: Linen Tweed



### IBIS EXTERIOR

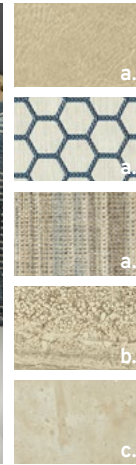
Awning: Linen Tweed

# INTERIOR DÉCOR



## AVALON INTERIOR

a. Furniture/Fabric b. Flooring c. Counter Top



## BECKFORD INTERIOR

a. Furniture/Fabric b. Flooring c. Counter Top



## HAMDEN INTERIOR

a. Furniture/Fabric b. Flooring c. Counter Top



## IBIS INTERIOR

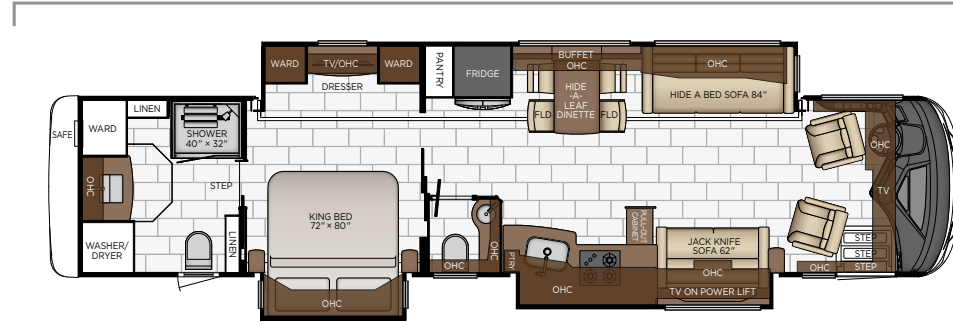
a. Furniture/Fabric b. Flooring c. Counter Top



\*Available in High Gloss or Matte Finish

# MOUNTAIN AIRE FLOOR PLANS

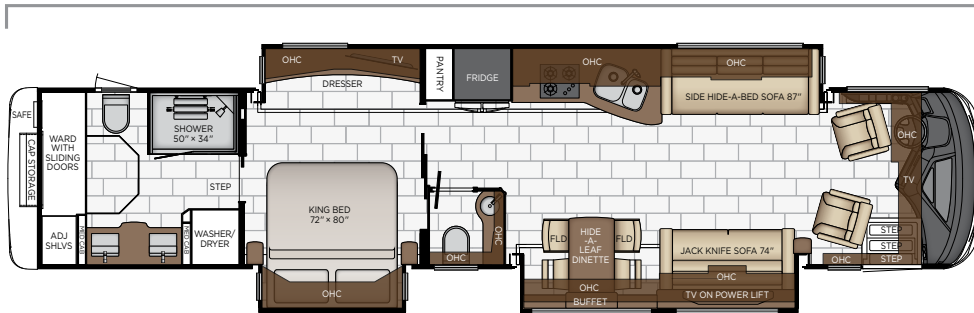
Length: 41' 10"



**4118**

Length	41' 10"	Grey Tank	80 gal.
Width	101.5"	Sewage Tank	60 gal.
App. Overall Height	13' 02"	Water Tank	105 gal.
Interior Width	95.5"	Propane Tank	22 gal.
Interior Height	83"	Furnace	50,000 btu

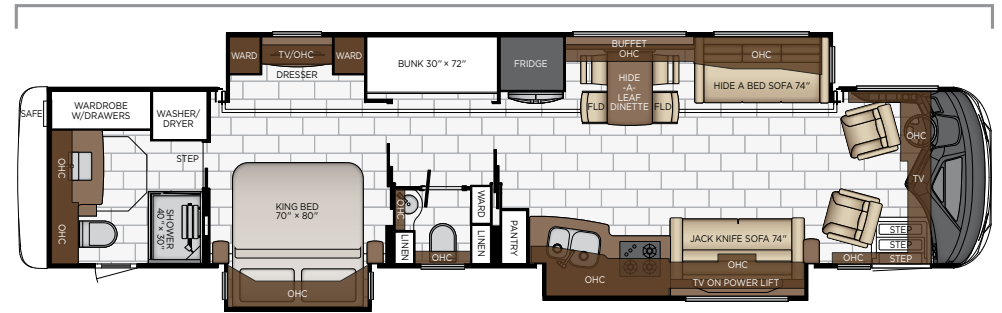
Length: 44' 10"



**4533**

Length	44' 10"	Grey Tank	80 gal.
Width	101.5"	Sewage Tank	60 gal.
App. Overall Height	13' 02"	Water Tank	105 gal.
Interior Width	95.5"	Propane Tank	22 gal.
Interior Height	83"	Furnace	50,000 btu

Length: 44' 10"

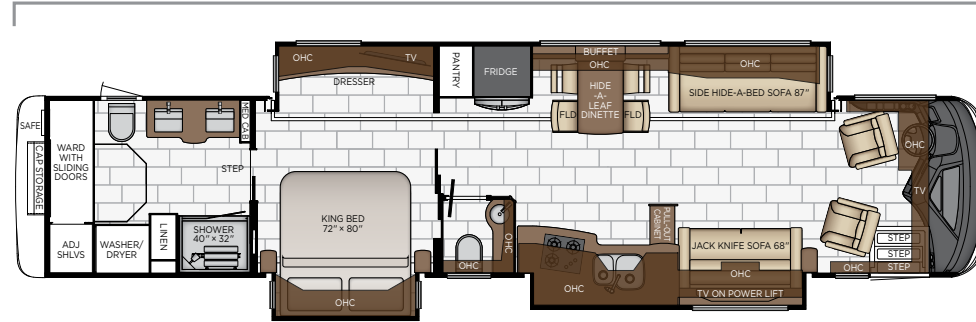


**4535**

Length	44' 10"	Grey Tank	80 gal.
Width	101.5"	Sewage Tank	60 gal.
App. Overall Height	13' 02"	Water Tank	105 gal.
Interior Width	95.5"	Propane Tank	22 gal.
Interior Height	83"	Furnace	50,000 btu

# MOUNTAIN AIRE FLOOR PLANS

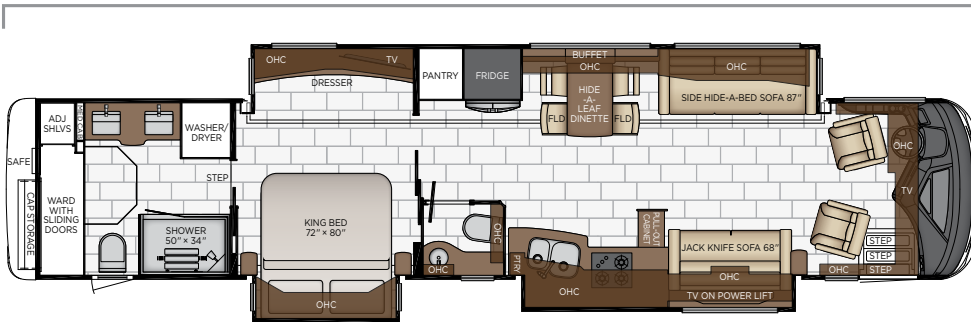
Length: 44' 10"



**4543**

Length	44' 10"	Grey Tank	80 gal.
Width	101.5"	Sewage Tank	60 gal.
App. Overall Height	13' 02"	Water Tank	105 gal.
Interior Width	95.5"	Propane Tank	22 gal.
Interior Height	83"	Furnace	50,000 btu

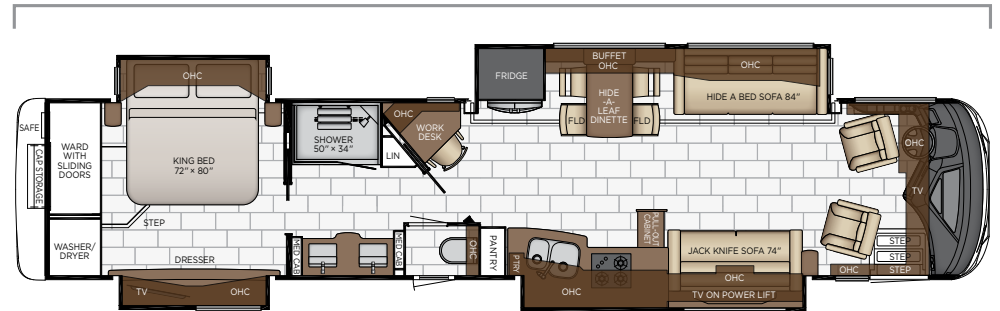
Length: 44' 10"



**4551**

Length	44' 10"	Grey Tank	80 gal.
Width	101.5"	Sewage Tank	60 gal.
App. Overall Height	13' 02"	Water Tank	105 gal.
Interior Width	95.5"	Propane Tank	22 gal.
Interior Height	83"	Furnace	50,000 btu

Length: 44' 10"



**4589**

Length	44' 10"	Grey Tank	80 gal.
Width	101.5"	Sewage Tank	60 gal.
App. Overall Height	13' 02"	Water Tank	105 gal.
Interior Width	95.5"	Propane Tank	22 gal.
Interior Height	83"	Furnace	50,000 btu

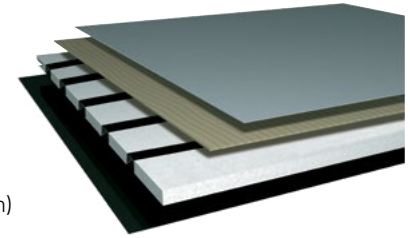


## QUALITY YOU CAN FEEL

Like a fine home, the 2022 Mountain Aire is framed 16 inches on center, and is covered by a fiberglass roof with walkable decking and an integrated gutter rail.

## BASEMENT

Cargo Liner  
 3/8" Floor Decking  
 1 1/4" Bead Foam  
 Galvanized Sheeting (Prevents Distortion)



FLOOR PLAN	ENGINE HP	AXLE RATIO	FUEL CAP.	WHEEL BASE	FRONT GAWR	REAR GAWR	TAG GAWR	GVWR	GCWR	APP. UVW	APP. NCC
4118	500	4.3	150 gal.	258+TAG	20000 lb.	20000 lb.	14000 lb.	54000 lb.	69000 lb.	43000 lb.	11000 lb.
4533	500	4.3	150 gal.	294+TAG	20000 lb.	20000 lb.	14000 lb.	54000 lb.	69000 lb.	45500 lb.	8500 lb.
4535	500	4.3	150 gal.	294+TAG	20000 lb.	20000 lb.	14000 lb.	54000 lb.	69000 lb.	45500 lb.	8500 lb.
4543	500	4.3	150 gal.	294+TAG	20000 lb.	20000 lb.	14000 lb.	54000 lb.	69000 lb.	45500 lb.	8500 lb.
4551	500	4.3	150 gal.	294+TAG	20000 lb.	20000 lb.	14000 lb.	54000 lb.	69000 lb.	45300 lb.	8700 lb.
4589	500	4.3	150 gal.	294+TAG	20000 lb.	20000 lb.	14000 lb.	54000 lb.	69000 lb.	45200 lb.	8800 lb.

**The content in our literature depicts and describes products that are subject to change. For the most recent images and information, please visit [NewmarCorp.com](http://NewmarCorp.com).**

Lengths, heights, widths, and dry weights are approximate. Weight will vary based on optional equipment added to the above base weight.

**GAWR:** Gross Axle Weight Rating is the maximum permissible weight for an axle.

**GVWR:** Gross Vehicle Weight Rating is the maximum permissible weight for a fully loaded motor coach.

**GCWR:** Gross Combination Weight Rating is the value specified by the manufacturer of the vehicle as the maximum allowable loaded weight of this motor coach and any towed trailer or towed vehicle.

**UVW:** Unloaded Vehicle Weight is the weight of this motor coach as built at the factory with full fuel, engine oil, and coolants. Does not include cargo, fresh water, propane gas, or dealer-installed accessories.

**NCC:** Net Carrying Capacity is the maximum weight of all occupants, including the driver, personal belongings, food, fresh water, waste water, propane gas, tools, tongue weight of towed vehicle, dealer-installed accessories, etc., that can be carried by the motor coach.

**Specifications supplied by the chassis manufacturer.**

**Mountain Aire R-Values:**

Roof R-Value = 24

Sidewall R-Value = 11

Floor R-Value = 16

Basement R-Value = 16

# FEATURES AND OPTIONS

## EXTERIOR



### EXTERIOR FEATURES

Full-Paint Masterpiece Finish™ with Cut and Buff with Beta Fusion Protection on Front Cap

Lighted Newmar Badge in Front Grill

Convex Exterior Mirrors with Remote Control, Defrost, Turn Signals and Side-View Cameras

Chrome Power Baggage Door Locks, Keyless Entrance Door with Touch Pad and Door Bell

Entrance Door with Automatic Step

Rear Hitch for Towing Car

Assist Handle at Entrance Door

Mud Flaps

Rear Protective Tow Guard with Stainless Steel Newmar Name Cutout

Undercoating

Hydraulic Leveling Jacks

Stainless Steel Exterior Trim Pieces and Entrance Door Kick Panel

Hammock Backer

Storage Bins in Pegboard Compartment

Storage Shelf Above Freezer

### OPTIONS

Patio Hammock Package Specify 1 or 2

Stainless Steel Trim Kit for Exterior Compartment Doors

Flag Pole Bracket

Storage Tray 26" X 90" Power Location-Bay 2

Storage Tray 26" X 91" Non-Power, Location Bay 2

Storage Tray 40" X 90" Power, Location-Bay 2

Storage Tray 40" X 90" Power, Location-Bay 3

Storage Tray 42" X 91" Non-Power, Location-Bay 2

Storage Tray 42" X 91" Non-Power, Location-Bay 3

Storage Tray 43" X 56" Non-Power, Location-Bay 3

Storage Tray 43" X 56" Non-Power, Location-Bay 4

### CONSTRUCTION FEATURES

Fiberglass Roof and Integrated Gutter Rail

Gelcoated Fiberglass Exterior Sidewalls, Front and Rear Caps

Aluminum-Frame Sidewalls and Roof Construction, 16" on Center

5/8" Foam Insulation Laminated in Sidewalls and Ceiling

Polar Pak R19 Batten Insulation on Roof

R16 Foam Insulation in Basement

Automatic Mechanical Lock Arms on Non Hydraulic Slideout Rooms-Paddle Style

Egress Door with Ladder System

Mountain Aire Dash





## WINDOWS, AWNINGS, & VENTS

Frameless Double-Pane Tinted Safety-Glass Windows

Fan-Tastic® Vent with Rain Sensor in Kitchen, Bathroom and Enclosed Stool Room

Hardwood Louvered Cover on Fan-Tastic® Vent in Kitchen

Skylight Above Shower\*

Girard® Package—Two Nova Side Awnings, Slideout Covers, Entrance Door and Power Window Awnings

One Piece Tinted Windshield

Driver Side Power Window

Large Non-Ventilated Living Room and Dinette Windows

### OPTIONS

Bunk Windows

Kitchen Window

## CHASSIS FEATURES

Spartan® K3 Tag Axle 500 Hp

Air Leveling System

Aluminum Wheels

Electronic Chassis Information Center in Dash

Electronic Stability Control

Cruise Control

Comfort Drive™ Steering with Power Column and Adjustable Control

Recessed Fuel Fills with Crossover to Fill from Either Side

Back-Up Alarm

Anti-Lock Braking System

Chassis Battery Disconnect

Automatic Headlights On/Off

Push Button Engine Start

Glass Dash Instrumental Panel

OnGuard™ Collision Mitigation Adaptive Cruise System with Adj. Following Distance Control on Spartan Chassis

Tire Pressure Monitoring on Tag Axle Chassis

Mobileye® Lane Tracking and Lane Departure Warning System

### OPTIONS

Curt Spectrum Integrated Brake Control on Spartan® Chassis Only

## AIR CONDITIONING & HEATING

Three 15M Penguin™ Heat Pump Central Air Conditioners with Remote Control Thermostat

Chinook Dual Loop Heat with Continuous Hot Water

Dash Heater and Air Conditioner

Driver and Passenger Dash Overhead Ventilation System

Wall Mounted Sensors for Heating and Air Conditioning

Roof Air Conditioning Drainage System

Electric Radiant Heat Installed Below Main Floor Tile

## ELECTRICAL FEATURES

12.5 Kw Cummins Onan® Diesel Generator

50 Amp Electrical Service with Flexible Cord with Automatic Transfer Switch

Six 6-Volt House Batteries

Battery Disconnect Switch for House Battery

10 Watt Solar Panel to Charge Chassis Battery

3000 Watt True Sine Inverter

12 Volt Auxiliary Receptacle on Dashboard

Emergency Engine Start Switch

Engine Block Heater

Energy Management System

Exterior Security Lights

Midship Side Turn Signals

LED Lights Recessed in Ceiling and Underneath Overhead Cabinets

Accent Lights in Feature Ceiling, Slideout Fascia Trim and Lambrequins

LED Lighting in Pull-Out Pantry, Kitchen and Bathroom Base Cabinets

LED Lights in Exterior Storage Compartments on Automatic Switches

LED Lights Installed Under Door Side Slideouts

Lights in Wardrobes

Manually Operated Hold-To-Run Slideout Switch

Automatic Generator Start on Low Battery or Temperature Setting

Cable TV Connection

Interior Courtesy Lights

USB Charger at Dinette and Bedroom Night Stand

USB Outlet at Dash for Driver Use

Power Rewind Wheel with 50' Cord\*

Recessed Docking Lights



KIB Touch Screen Interior Light and Shade Controls

Secondary Multiple Touch Screen in Bedroom

All Lights Off Function in Bedroom

Silverleaf® Multiplex Electrical Wiring System

Solar Prep with Six Gauge Wire from Roof to House Battery Compartment

Spare Fuses in Chassis and House Fuse Panels

New Touch Screen Tank Display Monitor in Water Bay

Phone and Radio Controls on Steering Wheel on Spartan® Chassis

Wireless Phone Charger Pad in Driver Area

Wireless Charging Mat Built into Passenger Console

110 Volt Recept in Bed Overhead with Two Pass-Through Ports

110 Volt/USB Outlet at Head of Each Bunk\*

Dimmable with Adjustable Aim Reading Lights at Head of Bed

Transfer Switch with Surge Protector

### OPTIONS

LED Strip Lighting Installed Under Off Door Side Slideouts

Four Flexible 100 Watt Solar Panels on Roof

## PLUMBING & BATH FEATURES

Demand Water System

Sewage Holding-Tank Rinse

Dometic® 321 China Bowl Stool or Macerator Stool\*

Aqua Miser® Shower System

Tiled Shower Walls with Glass Door

Soap Dispenser in Shower

Fold Down Shower Seat

Water Filter for Entire Unit

Exterior Shower

Auto Fill for Fresh Water Tank

Power Water Hose Reel

Hot Water Line to Generator Area\*

Grey Holding Tank Rinse

### OPTIONS

Assist Handle in Shower

RV Sanicon Turbo System



**INTERIOR FEATURES**

Designer Feature Ceiling and Cathedral Ceiling with Added Height on Rear Bath Floor Plans*
Tile Floor in Kitchen, Bathroom, Bedroom and Living Area
Auto Motion Power Shades and Lambrequins
Auto Motion Power Shades for Windshield and Driver/Passenger Side Windows
Hardwood Window Sills
Hardwood Raised Panel Interior Passage Doors
Flush Handles on Swinging Bath Doors
Interior Assist Handle at Main Entry Door
Fitted Non-Quilted Bedspread with Accent Pillows
Safe Located in Bedroom Wardrobe
Waste Basket in Kitchen Base Under Sink
Maximized Shoe Storage Shelves Recessed in Rear of Wardrobe

**CABINETS & FURNITURE**

Bermuda Glazed Maple Hardwood Cabinets with Raised Panel Doors with Matte Finish
Concealed Hinges on Cabinet Doors
Super Polished Solid Surface Countertop in Kitchen with Under Mounted Stainless Steel Sink and Sink Covers
Super Polished Solid Surface Countertop in Bathroom and Bedroom
Lifts on Bed Top
Passenger Seat Work Station
Pullout Pantry Shelves*
Push to Release Drawer Slides in Pantry
Soft-Close Cabinet Doors*
Drawers with Dove Tail Sides with Self Closing Full Extension Ball Bearing Guides
Villa Ultra Leather Sofa and Driver/Passenger Seats with Integrated Seat Belts
Driver Seat with Vibrator for Haptic Feedback
Heated Front Seats with Power-Lumbar, Recline, Footrest and Queen-Sized Passenger Seat Plush Pillow Top Mattress*
Cedar Paneling in Bedroom Wardrobe
Extended Rotation Concealed Hinge for Washer/Dryer Cabinet Door
Side Folding Hide-A-Bed Sofa with Memory Foam Mattress*
Full Height Wardrobes Beside Lav*

Mesh Cell Phone Holder at Each Bunk Bed*
Molded Silverware Divider Tray
<b>OPTIONS</b>
Glacier Glazed Maple Hardwood Cabinets with Raised Panel Doors with High Gloss or Matte Finish
Bermuda Glazed Maple Hardwood Cabinets with Raised Panel Doors-High Gloss
Toffee Glazed Maple Hardwood Cabinets with Raised Panel Doors-High Gloss or Matte Finish
Sable Maple Hardwood Cabinets with Raised Panel Doors-High Gloss or Matte Finish
Sleep Number® R5 Radius Corner Air Mattress
Power Extenda Flex Dinette
Buffet Dinette
Combination Desk/Dinette with Buffet Table, Two Fixed/Two Folding Chairs
Power Incline Retracting Bed Base with Sleep Number® R5 Air Mattress
Power Incline Head of Bed with Sleep Number® R5 Air Mattress
Euro Booth Dinette with Two Table Leaves and Two Folding Chairs
Euro Booth/Hide-A-Bed Combo 162" with Two Table Leaves and Two Folding Chairs
Two Recliners with Lampstand and Reading Lights
Two Ottomans*
Passenger Seat with Standard Width
Powered Theater Seating 87"

**APPLIANCES & ACCESSORIES**

Stainless Steel 30" Convection Microwave with Recessed Three Burner Gas Cooktop
Air Horns
Whirlpool® 19.7 Refrigerator
Splendide® Two-Piece Stacked Washer/Dryer
Dometic® 2.47 Cf. Freezer on Pullout Tray in Exterior Baggage Compartment*
Dometic® 3.0 Cf Freezer on Pullout Tray in Exterior Baggage Compartment*
Storage Shelf Above Freezer
Flush Cooktop Cover of Matching Countertop Material
Central Vacuum with Tool Kit
<b>OPTIONS</b>
All Electric Recessed Mount Induction Cooktop and 8 AGM Batteries
Dishwasher in Drawer with Stainless Steel Front



**AUDIO, VIDEO & ACCESSORIES**

Samsung® LED TV in Living and Bedroom Areas* (TV Sizes Vary Per Floor Plan)
Samsung® 43" 4K LED TV in Front Overhead
Samsung® 50" 4K LED TV on Televator in Living Area*
Bose® 500 Subwoofer
Bose® 700 Sound Touch Soundbar in Livingroom
Xite Dash Radio, 10" Dual Monitor with Nav-N-Go Navigation
Xite HD 360 Camera System with Predictive Grid Lines and Tri-View Rear Camera
Rearview Color Monitor System with Audio
Winegard Rayzar Automatic Digital TV Antenna
Satellite Dish Prep on Roof
Two Bedroom Radio Speakers
TV Jack and 110 Volt Recept in Door Side Exterior Storage Compartment
Cat 6 TV Cables
Infra Red Repeater System to Operate Audio/Visual Components
WiFi Ranger Tenton/Poplar LTE
10 Bc Fire Extinguisher, Smoke Detector, Propane and Carbon Monoxide Detector
Remote Navigation Programming via SD Card
<b>OPTIONS</b>
Sirius® Satellite Radio Capability (Does Not Include Monthly Subscription)
Exterior Entertainment Center in Sidewall with Samsung® 43" 4K LED TV and Soundbar
Exterior Entertainment Center in Storage Compartment with Samsung® 43" 4K LED TV and Bose® Soundbar
WiFi Ranger Denali/Spruce LTE
Winegard Automatic Open Face Satellite Dish-For DISH HD and Bell HD TV
Winegard Automatic Open Face SWM Satellite Dish-for DIRECTV STD/HD and In-Motion DIRECTV STD, DISH STD/HD
Winegard Automatic Open Face Satellite Dish and Winegard In-Motion for DISH Network
Winegard Automatic Open Face Satellite Dish for DIRECTV
Winegard In-Motion Dome Satellite Dish-for DISH STD/HD, DIRECTV STD and Bell Canada
Two-19" Skyworth TV/DVD Monitors at each Bunk*
Extra Monitor on Passenger Side
Rear Camera (2) Prep for Use with Stacker Trailer
Universal Toll Module

\*Check with dealership on floor plan availability.

The content in our literature depicts and describes products that are subject to change. For the most recent images and information, please visit [NewmarCorp.com](http://NewmarCorp.com).

# The Newmar Customer Experience

The Newmar difference goes beyond our industry-leading motor coaches to provide you with an unrivaled ownership experience.



## QUALITY FROM THE START

Every Newmar is crafted one at a time by folks who have spent an average of eight years building them. And each coach we assemble must undergo more than 1,000 tests and checks before ever leaving our factory.



## FRIENDS FOR LIFE

Meet fellow owners through the Newmar Kountry Klub, a top social club for RV travelers that hosts rallies and other special events throughout the U.S. and Canada.



## CAREFULLY SELECTED DEALERS

We view our dealership network in terms of quality, not quantity. Each of our dealers acts as a partner in our shared mission to exceed your highest of expectations, for an ownership experience that's second to none from day one.



## SEAMLESS SERVICE

When you join the Newmar family, we pair you with a dedicated service specialist with expert knowledge of your exact coach. Available 24/7, our service specialists guarantee dealer warranty authorizations within four business hours and ship all in-stock parts the same day, free of charge.



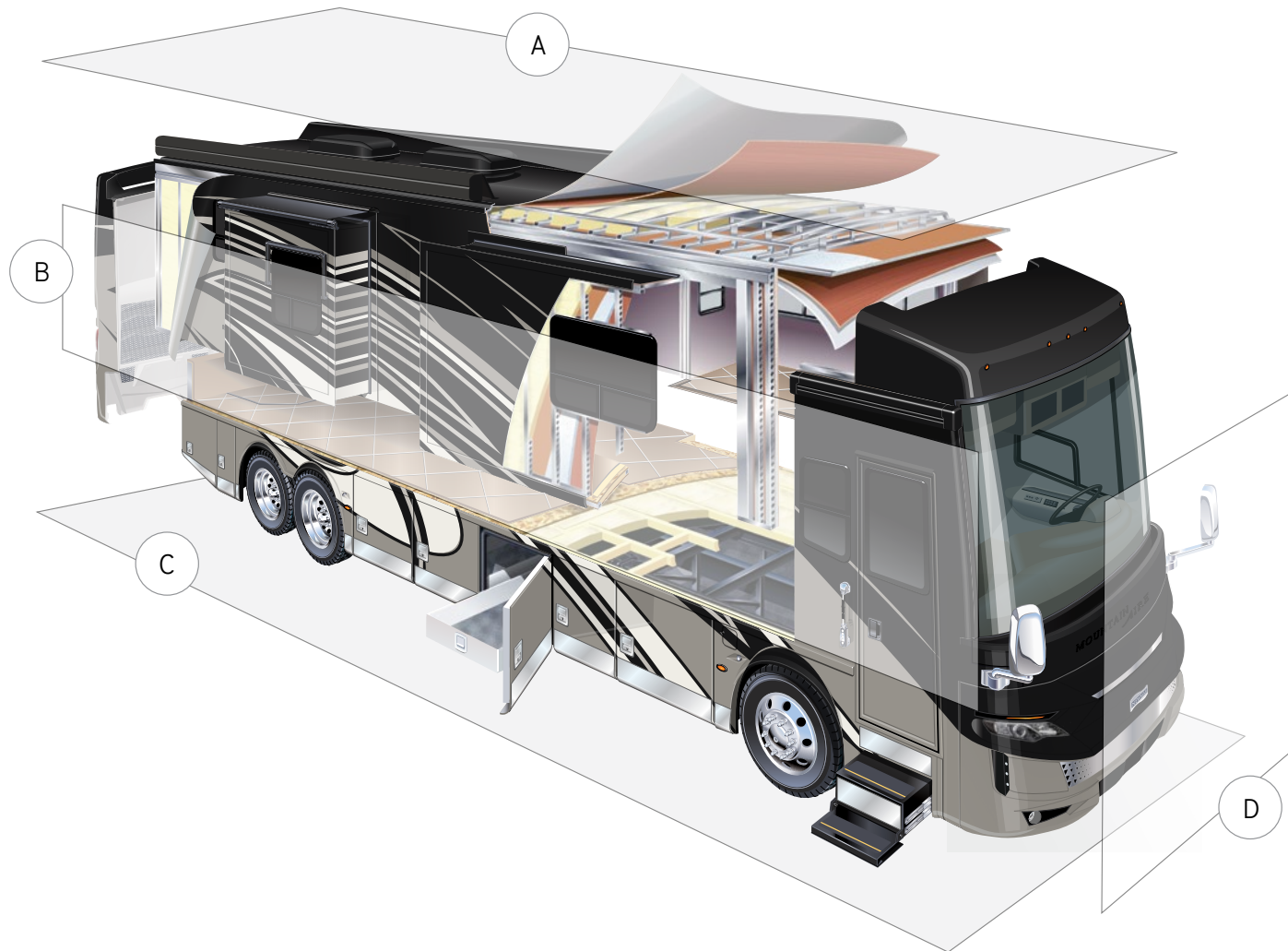
## EVERYTHING IN ONE PLACE

As a Newmar owner, you'll find resources specific to your coach through Newgle, an easy-to-use knowledge base that houses everything from user guides to technical support documents.



## ROCK-SOLID PROTECTION

All models include a one-year/unlimited mileage limited warranty and a five-year, non-transferable structural warranty that covers your coach's superstructure in the event it fails to perform. Ask your Newmar dealer for more details.



## A. ROOF

---

Fiberglass Roof  
 Batten Insulation  
 A/C Ducting  
 16" on Center Aluminum  
 Rafter Framing  
 Kraft Paper Vapor Barrier  
 5/8" Bead Foam  
 3/16" Panel  
 Padded Vinyl Overlay

## B. SIDEWALL

---

Interior Wall Panel  
 5/8" Bead Foam  
 Kraft Paper Vapor Barrier  
 Batten Insulation  
 Composite One-Piece  
 Gelcoat Exterior Sidewall  
 Aluminum Framing

## C. FLOOR

---

Tile  
 16" on Center Wood Framing  
 5/8" Floor Decking  
 Polyethylene Moisture Barrier  
 Batten Insulation

## D. EXTERIOR

---

15M Penguin™ Heat Pump  
 Central Air Conditioners  
 One-Piece Bonded Windshield  
 Polish Free Aluminum Wheels  
 Frameless, Double-Pane,  
 Tinted Safety Glass Windows  
 Side-Hinged Baggage Doors with  
 Optional Pull-Out Tray

# Our Partners

Newmar Quality Begins with the Company We Keep

You deserve class-leading performance from names you can trust. That's why we only work with suppliers dedicated to providing our customers with unrivaled quality, comfort, and support.

## **BASF**

We create chemistry

The Coatings division of BASF is a global expert in the development and production of innovative and sustainable OEM and refinish coatings that deliver solutions beyond your imagination.



## **INDUSTRIAL FINISHES**

Industrial Finishes has supported RV manufacturers for over four decades. The Industrial Finishes paint process delivers uncompromising quality, providing your coach with a true "Masterpiece" finish.



Driven By You

## **FREIGHTLINER CUSTOM CHASSIS**

Freightliner Custom Chassis Corp. (FCCC) is renowned for delivering the industry's best ownership experience through exceptional 24/7 factory-direct support, exceptional ride and handling, and developing high-performance innovations such as DRIVETECH. It's the only RV driving system that prioritizes safety and automotive luxury by putting every command at your fingertips.



## **RIVERPARK**

At RiverPark, we proudly represent the leading brands in consumer electronics—brands you know and trust to provide exceptional quality and innovative technology. Newmar features Samsung's incredible 4K TVs, Xite Infotainment systems featuring Nav-N-Go Navigation, Bose soundbars, and JBL and Infinity premium audio. Step into a 2022 Newmar and experience dazzling audio and video performance throughout the coach.



## **SPARTAN MOTORS**

Spartan Motors is an American company with over 30 years of experience designing and manufacturing the premier motorhome chassis, which provides superior performance, exceptional safety ratings, and industry-leading technology.



**When You Know the Difference.**

Newmar Corporation | 355 N Delaware St | PO Box 30 | Nappanee, IN 46550-0030 | 574-773-7791 | Fax 574-773-2895

[NewmarCorp.com](http://NewmarCorp.com)