

CROSS TRAIL



CROSS TRAIL
Coachmen
RECREATIONAL VEHICLES



CoachmenRV.com



THE LATEST INNOVATION IN CLASS C MOTORHOMES. BIG FEATURES. SMALL PACKAGE.

TRANSIT

THE ECO-FRIENDLY CROSS TRAIL'S SIZE AND CAPABILITIES GIVE YOU NEARLY ENDLESS POSSIBILITIES. TAKE YOUR ADVENTURE WHERE MOST MOTORHOMES CANNOT. WITH UNRIVALED EXTERIOR STORAGE, YOU CAN OUTFIT YOUR CROSS TRAIL WITH THE GEAR AND EQUIPMENT NEEDED TO CONQUER ANY EXPEDITION!

20XG WITH LUNA GREY DÉCOR



TRANSIT

INTERIOR FEATURES



20XG STORAGE

- **Livable and Storage Friendly Floorplans**
- **Large Shower Facilities**
Compared to Class B vans
- **Extra Large Kitchen Counters and Three Way Refrigerators**
- **Large Sliding Tinted Windows**
- **WiFi Ranger**
For better internet connection
- **Interior/Exterior Smart TV**
- **Largest Battery Capacity in Class**
400 AMP Hour AGM gives you more time off the grid
- **800 AMP Hour Lithium Available**
(Optional)
- **3000 Watt Inverter**
Pass through inverter provides power when needed, flexible to work with either AGM or lithium batteries
- **Power Bed (20XG Only)**
Allows for versatility with sleeping and storage
- **Renogy Empowered State-of-the-art Hybrid Electrical System**
Designed to operate every coach function from battery power, including A/C. Convenient for operating systems while traveling without the use of a generator

TRANSIT

EXTERIOR FEATURES



FORD TRANSIT CHASSIS

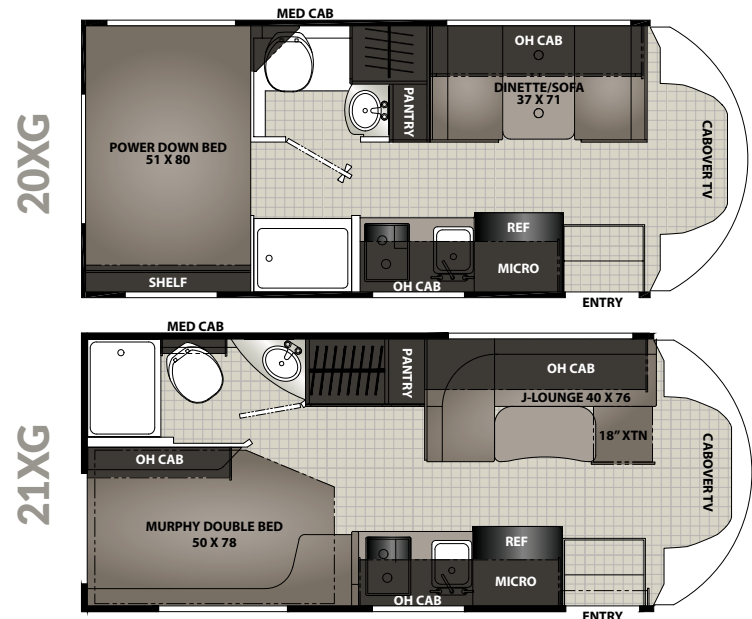
- **3.5L EcoBoost Engine**
- **10-Speed Automatic Overdrive with SelectShift transmission**
- **Available All Wheel Drive**
- **Dual 250 Amp Alternator** efficiently recharge coach batteries
- **Lane-Keeping System** adjustable system to activate either Alert mode, Assist mode, or both
- **Pre-Collision Assist with Automatic Emergency Braking** detect, alert, and brake-assist when vehicle sense a potential collision in front of you
- **Ford AdvanceTrac w/Roll Stability Control** Provides enhance side-slip control and electronic rollover stability for the vehicle
- **Azdel Composite Vacuum Bonded Sidewalls** with low entry door for safety
- **CrossFlex Roof Membrane** Gives more puncture resistance
- **Molded Fiberglass Front Cap**
- **Fuel Friendly Ford Transit Chassis** 3.5L EcoBoost Engine with AWD availability (Optional)
- **Convenient Go-Anywhere Sized Floorplans**
- **Extra Large Exterior Storage** for oversized cargo
- **Solar Equipped (Optional)** Up to 380W of roof solar
- **Armless Awning w/LED Lights and Sensor**
- **Exterior Entertainment Ready**
- **LP Quick Disconnect & Fresh Water Port**
- **Best-in-Class Capacities** Up to 41 gallons of fresh water, 68 lbs of propane, and over 2,000 lbs of cargo carrying capacity

CROSS TRAIL TRANSIT SPECIFICATIONS

	20XG	21XG
CHASSIS	FORD TRANSIT T350	FORD TRANSIT T350
ENGINE	V6 3.5L EcoBoost	V6 3.5L EcoBoost
HORSE POWER	310	310
TORQUE	400	400
WHEEL BASE	156"	156"
GVWR (LBS.)	11,000	11,000
GCWR (LBS.)	15,000	15,000
UVW (APPROX. LBS.)	8,510	8,632
CCC (APPROX. LBS.)	2,490	2,368
GAWR FRONT (LBS.)	4,630	4,630
GAWR REAR (LBS.)	7,275	7,275
INTERIOR HEIGHT	6' 7"	6' 7"
EXTERIOR WIDTH	7' 7"	7' 7"
EXTERIOR HEIGHT (WITH A/C)	10' 6"	10' 6"
EXTERIOR LENGTH (WITH HITCH)	24' 1"	24' 1"
HITCH WEIGHT (LBS.)	2000	2000
FUEL CAPACITY (GAL.)	25	25
LP CAPACITY (LBS.)	68	68
FRESH WATER CAPACITY (GAL.)	30	41
WATER HEATER CAPACITY (GAL.)	6	6
GREY TANK CAPACITY (GAL.)	27	59
BLACK TANK CAPACITY (GAL.)	28	28
EXTERIOR STORAGE (CU. FT.)	130	47

TRANSIT

SPECS & FLOORPLANS





XL

UP YOUR GAME WITH THE CROSS TRAIL XL.

WITH EVEN MORE FEATURES, CROSS TRAIL XL IS IDEAL FOR EXTENDED TRIPS, OR SIMPLY TRANSPORTING YOUR FAVORITE LITTLE LEAGUE TEAM TO THE WEEKEND TOURNAMENT. THIS MULTI-USE TOURING VEHICLE PROVIDES UNIQUE STYLING AND AMENITIES, INCLUDING INDUSTRY-LEADING WAREHOUSE STORAGE, HARDWOOD SHAKER DOORS AND SOLID DRAWERS. THE CROSS TRAIL XL IS THE PERFECT COMBINATION OF STYLE, DEPENDABILITY AND VALUE FROM THE PREMIER CLASS C MOTORHOME BUILDER.



22XG SHOWN WITH WHITE VELVET CABINETRY

XL INTERIOR FEATURES



- **Incredible Storage on All Floorplans**
Allows for more gear and bicycles to be brought along and stored away from the elements
- **Coachmen Even Cool Ducting System**
(On Select Models)
Evenly distributes air throughout your coach for more efficient cooling
- **Pre-wired for Rooftop Solar and Sidewall Portable Solar panel**
(Optional) Rooftop 190W Solar Panel and Solar Controller
- **Residential Queen Sized Bed**
Extra thick cushioning provides comfort and space
- **Seamless Thermofoil Countertops**
Designed without seams to prevent food and moisture damage
- **3 Burner Cooktop w/Oven**
More cooking options provided by an extra large LP tank
- **WiFi Ranger Standard**
Get connected to a nearby internet source to work and play remotely
- **Heated Black and Grey Holding Tank Pads**
Extend your stays in the Spring and Fall



XL

EXTERIOR FEATURES

- **2" Thick Azdel Composite Vacuum Bonded Sidewalls**
Increase lifetime and insulation of your sidewalls with water resistant Azdel Composite backed sidewalls
- **CrossFlex Roof Membrane**
Durable exterior that is tear and puncture resistant, while providing heat reflectance benefits
- **4000 Lamilux Color Infused Fiberglass**
Thick automotive gray fiberglass provides smooth high gloss exterior finish
- **Shorter Cabover Bunk**
Increases curb appeal and improves vision for driver and passenger
- **Up to 380W of Roof Solar**
(Optional)
- **Exterior Entertainment Center** (Optional)
- **Oversized Rear Cargo Storage**
(On Select Models)
Cargo storage designed to bring bicycles, camping equipment, and necessary adventure gear along with you
- **Standard 4,000W Onan Generator On Board**
- **Up to 7,500 Pounds of Towing Capacities**
(with E450 floorplans)



Coachmen Owner "Digital Kit" App

Now you can have your Owner's Manual with you wherever you are. Download our FREE App from the App Store or Google Play and you'll have the information right at your fingertips.

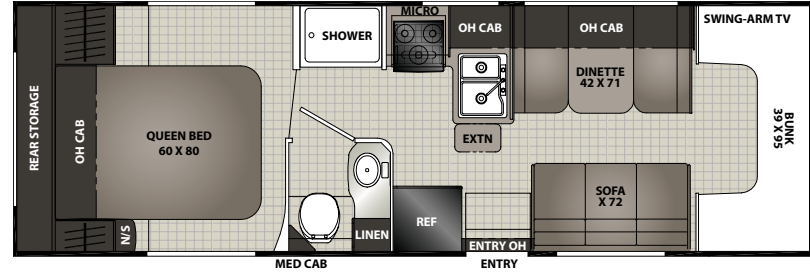
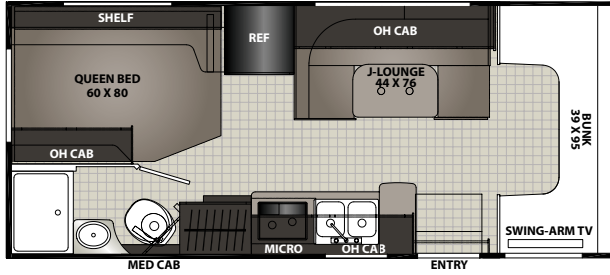


22XG REAR STORAGE



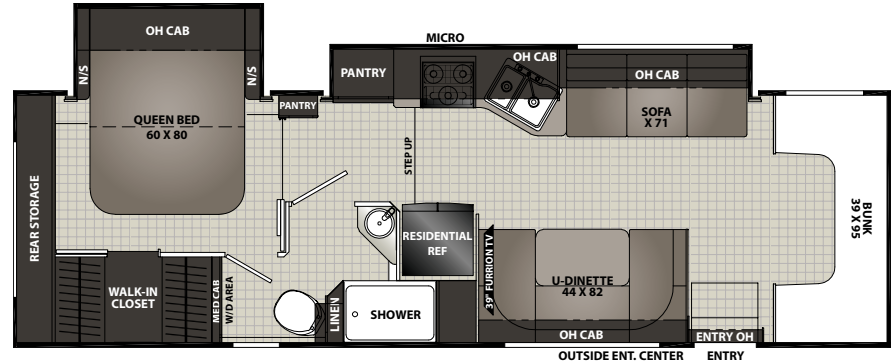
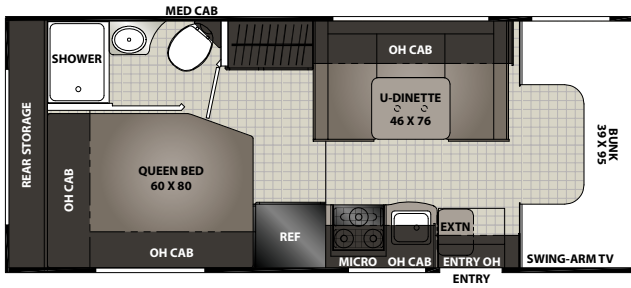
23XG REAR STORAGE

22XG



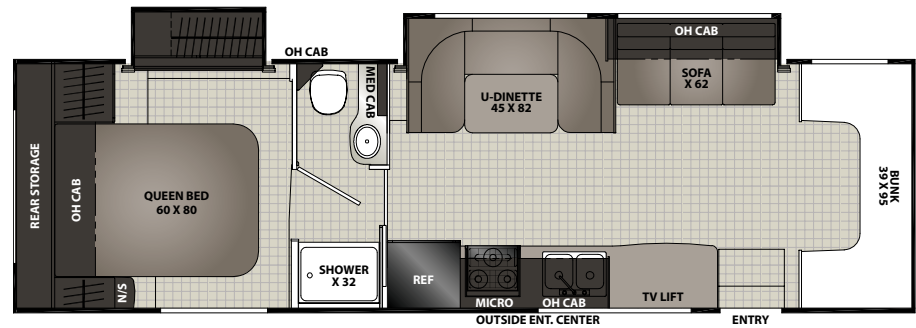
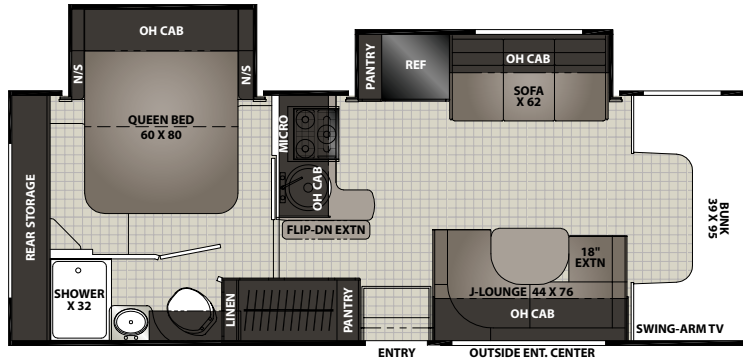
30XG

23XG



31XG

26XG



33XG

CROSS TRAIL XL SPECIFICATIONS

	22XG	23XG	26XG	30XG	31XG	33XG
CHASSIS	350 FORD	350 FORD	450 FORD	450 FORD	450 FORD	450 FORD
ENGINE	V8 7.3L	V8 7.3L	V8 7.3L	V8 7.3L	V8 7.3L	V8 7.3L
HORSE POWER	350	350	350	350	350	350
TORQUE	468	468	468	468	468	468
WHEEL BASE	158"	158"	190"	190"	220"	220"
GVWR (LBS.)	12,500	12,500	14,500	12,500	14,500	14,500
GCWR (LBS.)	18,500	18,500	22,000	18,500	22,000	22,000
UVW (APPROX. LBS.)	9,441	9,721	11,715	10,675	12,445	12,237
CCC (APPROX. LBS.)	3,059	2,779	2,785	1,825	2,055	2,263
GAWR FRONT (LBS.)	5,000	5,000	5,000	5,000	5,000	5,000
GAWR REAR (LBS.)	8,500	8,500	9,600	8,500	9,600	9,600
INTERIOR HEIGHT	6' 11"	6' 11"	6' 11"	6' 11"	6' 11"	6' 11"
EXTERIOR WIDTH	8' 4"	8' 4"	8' 4"	8' 4"	8' 4"	8' 4"
EXTERIOR HEIGHT (WITH A/C)	10' 10"	10' 10"	10' 11"	10' 11"	10' 11"	10' 11"
EXTERIOR LENGTH (WITH HITCH)	24' 3"	25' 10"	29' 4"	31' 4"	33' 8"	34' 10"
HITCH WEIGHT (LBS.)	5,000	5,000	7,500	5,000	7,500	7,500
FUEL CAPACITY (GAL.)	55	55	55	55	55	55
LP CAPACITY (LBS.)	68	68	68	68	68	68
FRESH WATER CAPACITY (GAL.)	41	50	50	39	50	50
WATER HEATER CAPACITY (GAL.)	6	6	6	6	6	6
GREY TANK CAPACITY (GAL.)	28	32	31	31	32	31
BLACK TANK CAPACITY (GAL.)	31	31	31	31	34	31
EXTERIOR STORAGE (CU. FT.)	47	146	124	118	135	165

GVWR (Gross Vehicle Weight Rating) is the maximum permissible weight of the unit when fully loaded. It includes all weights, inclusive of all fluids, occupants, cargo, optional equipment and accessories. For safety and product performance do NOT exceed the GVWR.

GCWR (Gross Combined Weight Rating) is the maximum permissible loaded weight of your motor home and any towed trailer or towed vehicle. Actual GCWR of this vehicle may be limited by the sum of the GVWR and the installed hitch receiver maximum capacity rating; see hitch rating label for detail.

GAWR (Gross Axle Weight Rating) is the maximum permissible weight, including cargo, fluids, optional equipment and accessories that can be safely supported by each axle.

UVW (Unloaded Vehicle Weight)* is the typical weight of the unit as manufactured at the factory. It includes all weight at the unit's axle(s), including full fuel, all fluids and LP Gas. The UVW does not include cargo, fresh potable water, additional optional equipment or dealer installed accessories.

*Estimated Average based on standard build optional equipment.

CCC (Cargo Carrying Capacity)** is the amount of weight available for fresh potable water, cargo, passengers, additional optional equipment and accessories. CCC is equal to GVWR minus UVW. Available CCC should accommodate fresh potable water (8.3 lbs per gallon). Before filling the fresh water tank, empty the black and gray tanks to provide for more cargo capacity.

** Estimated average based on standard build optional equipment

Each Coachmen motorhome is weighed at the manufacturing facility prior to shipping. A label identifying the unloaded vehicle weight of the actual unit and the cargo carrying capacity is applied to every Coachmen motorhome prior to leaving our facilities.

The load capacity of your unit is designated by weight, not by volume, so you cannot necessarily use all available space when loading your unit.

Actual towing capacity is dependent upon your particular loading and towing circumstances, which includes the GVWR, GAWR and GCWR as well as adequate trailer brakes. Please refer to the Operator's Manual of your vehicle for further towing information.

All information contained in this brochure is believed to be accurate at the time of publication. However, during the model year, it may be necessary to make revisions and Coachmen reserves the right to make all such changes without notice, including prices, colors, materials, equipment and specifications as well as the addition of new models and the discontinuance of models shown in this brochure. Therefore, please consult with your Coachmen dealer and confirm the existence of any materials, design or specifications that are material to your purchase decision. 4/21

CROSS TRAIL



CUSTOMER SATISFACTION



www.ForestRiverBuyLocal.com



COACHMEN OWNERS ASSOCIATION

FREE MEMBERSHIP
www.coachmenowners.com

YOUR CROSS TRAIL DEALER



Coachmen RV, a Division of Forest River, Inc.,
 A Berkshire Hathaway Company
 423 N. Main St., P.O. Box 30, Middlebury, IN 46540

To learn more about Coachmen RV and our products and see how Coachmen is making the easy life easier, visit www.coachmenrv.com

©Copyright 2021 Coachmen RV a Division of Forest River Inc. - All Rights Reserved.

**24/7 EMERGENCY
 ROADSIDE ASSISTANCE
 WITH VEHICLE PURCHASE***

- | | |
|----------------|-----------------|
| TOWING | WINCH-OUT |
| JUMP-STARTS | MOBILE MECHANIC |
| TIRE CHANGES | TECHNICAL |
| FLUID DELIVERY | SUPPORT |
| LOCKOUT | DEALER LOCATOR |
| SERVICE | SERVICES |



*VALID FOR 1 YEAR FROM DATE OF PURCHASE



Learn More
 Scan this barcode using
 a QR Reader on your
 smart phone to learn
 more about Forest River.



A Berkshire Hathaway company.