

VIBE



2021 Midwest Region Vibe

2021 West Region Single Axle Vibe

2021 West Region Double Axle Vibe



VIBE

CAMP ANYWHERE
PKG





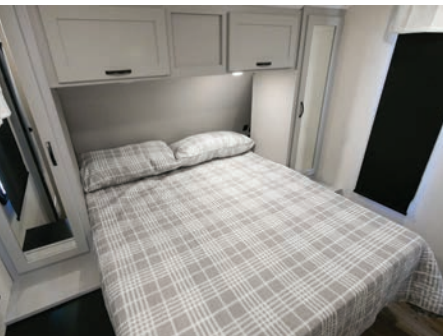
**BUNKHOUSE MODEL
34BH**



GRANITE DECOR



**COUPLES COACH
25RK**



MOONSHINE DECOR

STANDARDS AND OPTIONS



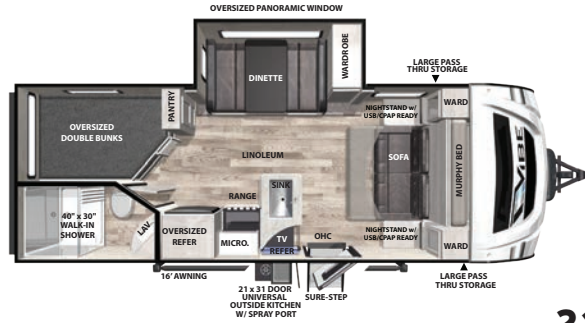
EXTERIOR STANDARDS	INTERIOR STANDARDS	INFINITY PACKAGE	OPTIONS
<ul style="list-style-type: none"> - Hyper Lyte Construction – Amazingly Light!! - Gel Coat Fiberglass w/ Upgraded Graphics Package - Laminated "Aluma Frame" Sidewalls/ Rearwall/Slideboxes - 2" Laminated Floor - 15,000 BTU Ducted A/C IPO 13.5K - High efficiency A/C Cooling System (Larger Duct Work) - Cable & Satellite Prep - Digital TV Antenna w/ Booster - Extra Large, Aluminum Framed, Pass-thru Storage - One Touch Electric Awning - LED Lighted Exterior Speakers (2) - XL Grab Handle - Radial Tires Filled w/ Nitrogen - Heated and Enclosed Underbelly - Power Stabilizer Jacks - 2-20 lb. LP Bottles - 30" Friction Hinge Entry Door - Outside Kitchen on Select Models - Aluminum Wheels - Spare Tire - Outside shower 	<ul style="list-style-type: none"> - Frosted Glass in Kitchen Cabinets - 3-Burner Cooktop w/ Stainless Steel 17" Oven - Large Single Bowl Stainless Steel Kitchen Sink - Upgraded 10.7 cu. ft. Residential Refer - 6 gal. G/E DSI Water Heater - Dometic Pedal Flush Toilet - Solid Surface Kitchen Countertops - Deluxe Wood Booth Table Top - 80" Interior Height - Hard Doors To Bedrooms For Privacy (Not Curtains) - Decorative Kitchen Back Splash - Large Trash Can w/ Designated Out-of-the-way Area - Upgraded Residential Style Carpet - Full Extension Ball Bearing Drawer Guides - Pot & Pan Storage Under Dinette Seats - Tri-fold Sofa - Skylight Over Kitchen - Skylight Over Tub/Shower 	<ul style="list-style-type: none"> - Modern Black Chef's Appliance Package - Bluetooth MP3/ DVD/CD/FM w/ Surround Sound - Stainless Steel Roll-up Sink Cover - Blackout Roller Shades - Black Tank Flush - 190w Roof Mounted Solar Panel w/ Battery & Box - Upgraded Spring Faucet - Diamond Guard Front Radius - Mor/ryde Fold-Down Solid Step - 50" Flat Screen TV's in Most Models - LED Awning Light - Recessed Stove W/ Glass Cover - New 3/4 Front Fiberglass Cap W/ LED Light - Teddy Bear Series Bunk Mats (Bunkhouse Models) - Decorative Window Treatments (Living Room Only) - Solid Surface Countertops - Heated Tank Pads 	<ul style="list-style-type: none"> - 2 Interior Decor Choices: Moonshine, Granite - Free Standing Table w/ 4 Chairs IPO Booth Dinette - 50 Amp Service w/ Wire & Brace for 2nd A/C - 2nd 13.5K A/C in Bedroom (Requires 50 Amp)

V
BUNKHOUSE MODEL
26BH

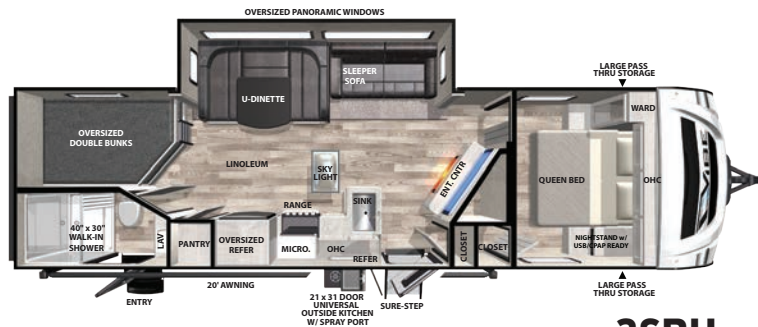




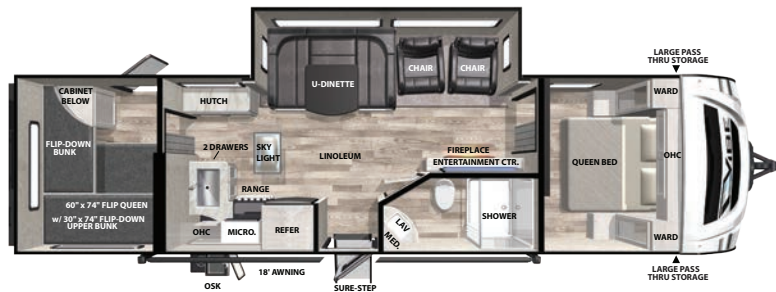
BUNKHOUSE MODELS



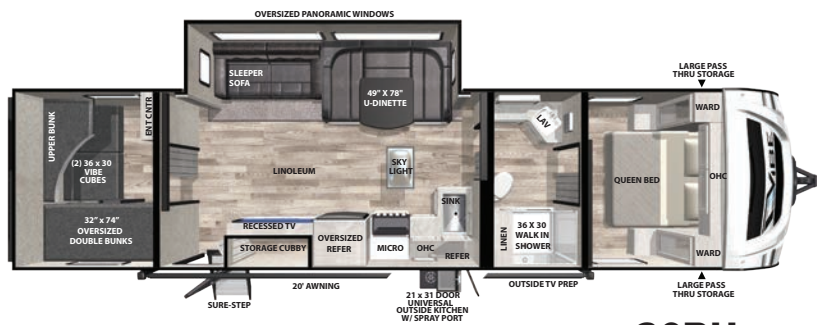
21BH



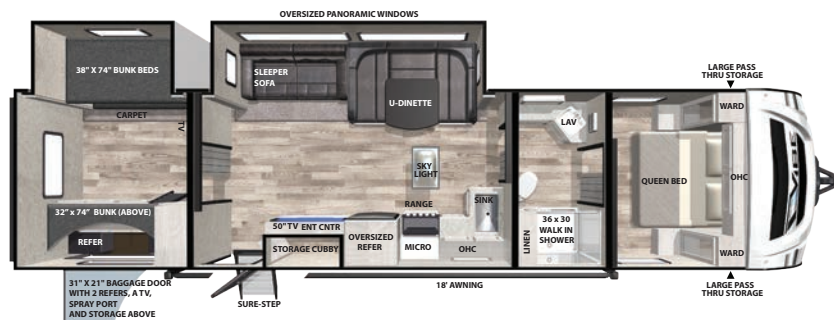
26BH



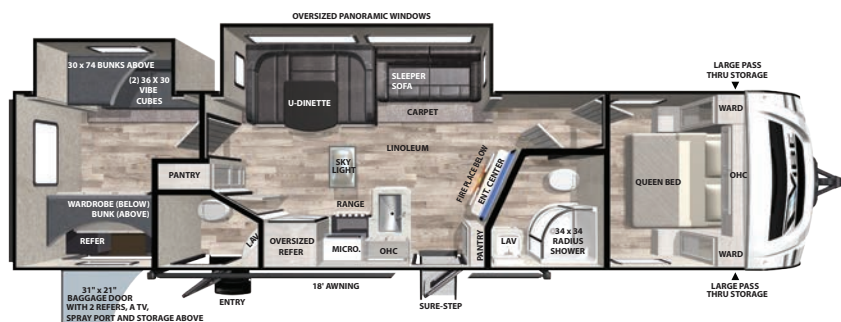
27VB



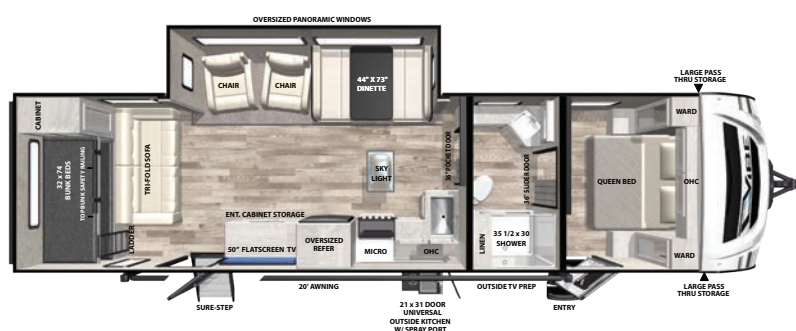
28BH



29BH



32BH

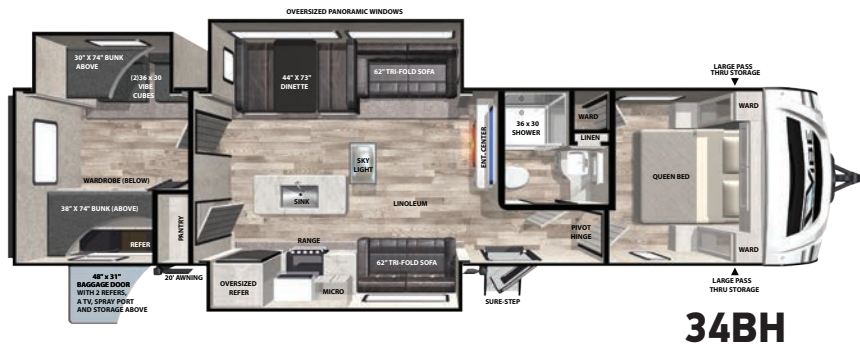
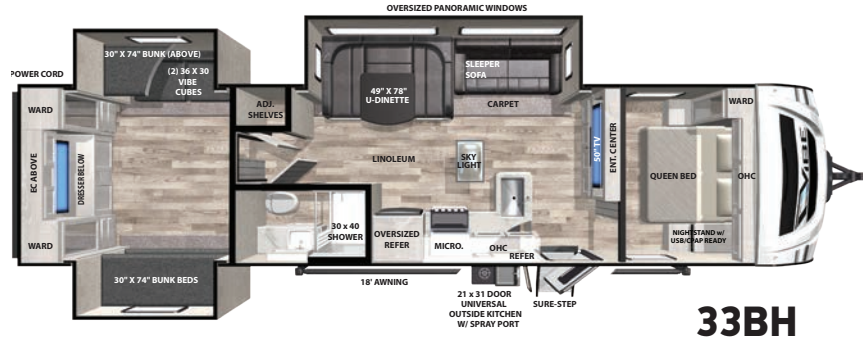


32MS

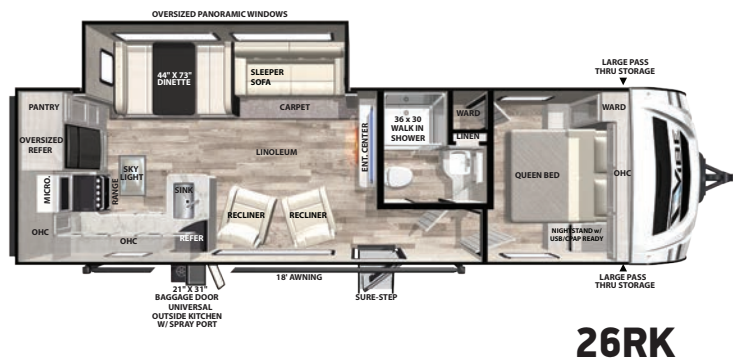
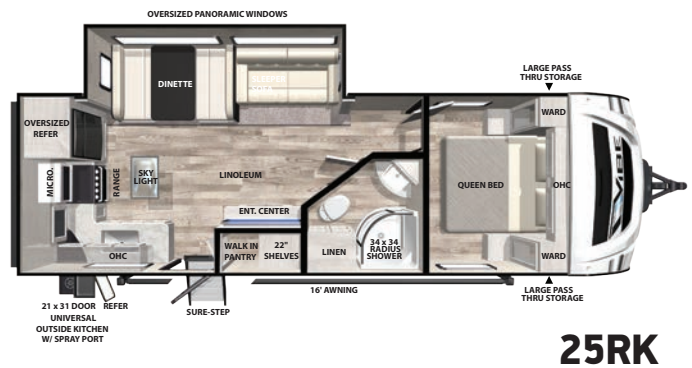
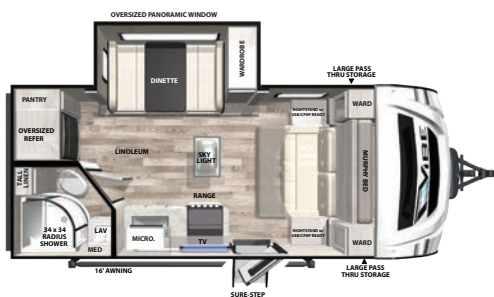
SPECIFICATIONS	21BH	26BH	27VB	28BH	29BH	32BH	32MS
Hitch Weight (lbs.)	636	835	890	930	1072	1074	1056
UVW	5,245	6,348	7,118	6,875	7,391	7,836	6,884
CCC (cargo cap.)	2,355	1,487	2,572	2,855	2,481	2,038	2,972
Exterior Length	25' 7"	33' 10"	35' 4"	36' 6"	38'	38' 3"	35' 8"
Exterior Height	11' 3"	11' 2"	11' 2"	11' 2"	11' 2"	11' 2"	11' 2"
Fresh Water (gal.)	40	40	40	40	40	40	40
Black Water (gal.)	30	30	30	30	30	60	30
Grey Water (gal.)	60	90	60	60	60	60	60
Awning Size	16'	20'	18'	20'	18'	18'	20'
Tire Size	14"	14"	15"	15"	15"	15"	15"



BUNKHOUSE MODELS (CONT.)

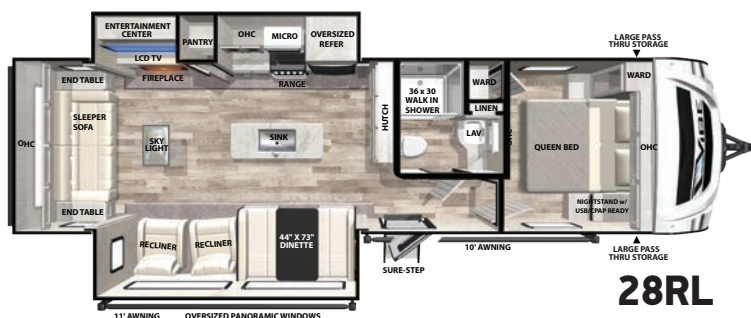
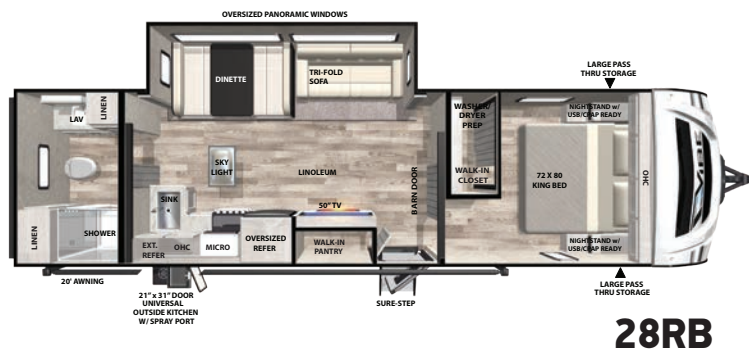


COUPLES COACHES





COUPLES COACHES (CONT.).



SPECIFICATIONS	33BH	34BH	18RB	25RK	26RK	28RB	28RL	31ML
Hitch Weight (lbs.)	936	972	503	805	941	959	821	990
UVW	7,740	8,164	4,730	5,888	6,664	6,691	7,096	7,558
CCC (cargo cap.)	1,996	1,608	1,525	1,712	1,277	3,068	2,525	2,232
Exterior Length	38'	39' 5"	21' 11"	29' 2"	33' 6"	34' 2"	34' 5"	36' 2"
Exterior Height	11' 2"	11' 2"	11' 2"	11' 2"	11' 2"	11' 2"	11' 2"	11' 2"
Fresh Water (gal.)	40	40	40	40	40	40	40	40
Black Water (gal.)	30	30	30	30	30	30	30	30
Grey Water (gal.)	60	60	30	60	60	90	60	90
Awning Size	18'	20'	16'	16'	18'	20'	11'/10'	14'
Tire Size	15"	15"	14"	14"	14"	15"	15"	15"



PRE-DELIVERY INSPECTION FACILITY

20,000 square feet of quality assurance. The bare essentials for a premium product. This state-of-the-art facility gives immediate daily feedback to production for quality assurance in every unit built.



www.ForestRiverBuyLocal.com



www.forestriverfrog.com

GVWR (Gross Vehicle Weight Rating) - is the maximum permissible weight of the unit when fully loaded. It includes all weights, inclusive of all fluids, cargo, optional equipment and accessories. For safety and product performance do NOT exceed the GVWR.

GAWR (Gross Axle Weight Rating) - is the maximum permissible weight, including cargo, fluids, optional equipment and accessories that can be safely supported by a combination of all axles.

UVW (Unloaded Vehicle Weight)* - is the typical weight of the unit as manufactured at the factory. It includes all weight at the unit's axle(s) and tongue or pin and LP Gas. The UVW does not include cargo, fresh potable water, additional optional equipment or dealer installed accessories.

*Estimated Average based on standard build optional equipment.

CCC (Cargo Carrying Capacity)** - is the amount of weight available for fresh potable water, cargo, additional optional equipment and accessories. CCC is equal to GVWR minus UVW. Available CCC should accommodate fresh potable water (8.3 lbs per gallon). Before filling the fresh water tank, empty the black and gray tanks to provide for more cargo capacity.

** Estimated average based on standard build optional equipment

Each Forest River RV is weighed at the manufacturing facility prior to shipping. A label identifying the unloaded vehicle weight of the actual unit and the cargo carrying capacity is applied to every Forest River RV prior to leaving our facilities.

The load capacity of your unit is designated by weight, not by volume, so you cannot necessarily use all available space when loading your unit.

All information contained in this brochure is believed to be accurate at the time of publication. However, during the model year, it may be necessary to make revisions and Forest River, Inc., reserves the right to make all such changes without notice, including prices, colors, materials, equipment and specifications as well as the addition of new models and the discontinuance of models shown in this brochure. Therefore, please consult with your Forest River dealer and confirm the existence of any materials, design or specifications that are material to your purchase decision.

VIBE



Learn More

Scan this barcode using a QR Reader on your smart phone to learn more about Forest River.



A Berkshire Hathaway company.

VIBE

401 CR 15, Elkhart, IN 46516
(574) 296-2084
www.forestriverinc.com
www.forestriveraccessories.com

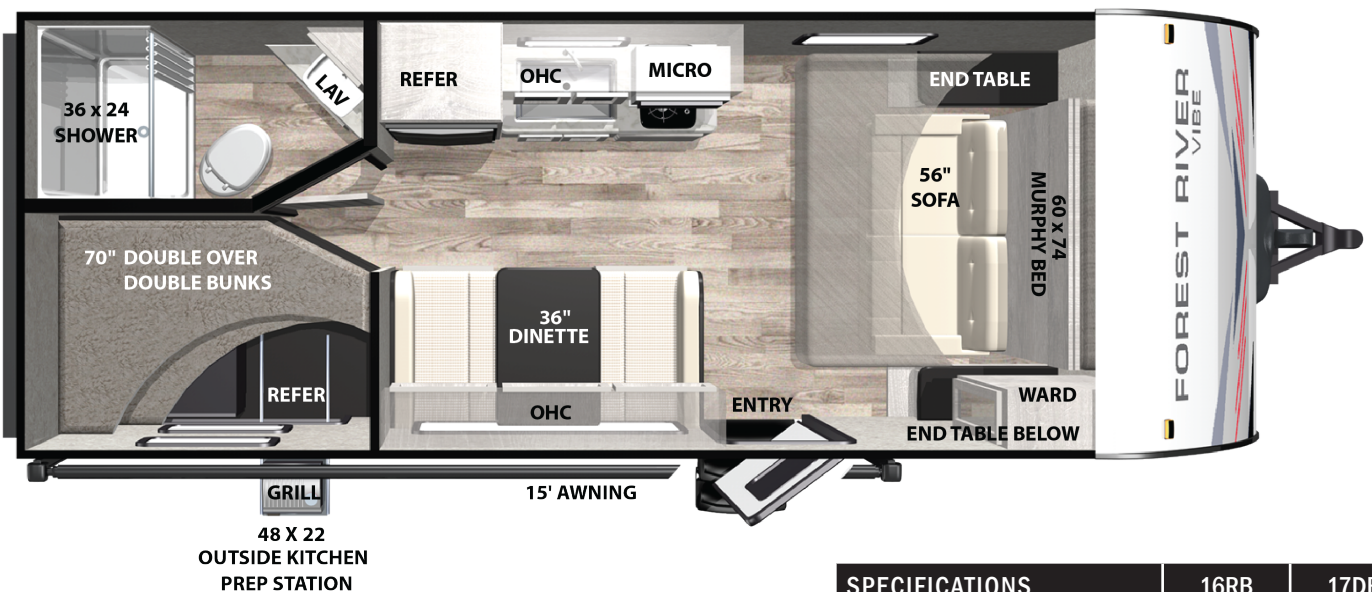
YOUR LOCAL VIBE DEALER

VIBE SINGLE AXLE TRAVEL TRAILERS

16RB



17DB



All information contained in this brochure is believed to be accurate at the time of publication. However, during the model year, it may be necessary to make revisions and Forest River, Inc., reserves the right to make all such changes without notice, including prices, colors, materials, equipment and specifications as well as the addition of new models and the discontinuance of models shown in this brochure. Therefore, please consult with your Forest River dealer and confirm the existence of any materials, design or specifications that are material to your purchase decision.

© 2021 — Forest River Inc., A Berkshire Hathaway company



SPECIFICATIONS	16RB	17DB
LENGTH	21' 11"	22' 5"
HEIGHT	10' 8"	10' 8"
HITCH WEIGHT	390 lb.	512 lb.
UNLOADED VEHICLE WEIGHT (UVW)	3,379 lb.	3,768 lb.
CARGO CARRYING CAPACITY (CCC)	1,411 lb.	1,144 lb.
FRESH WATER	38 GAL.	38 GAL.
BLACK WATER	30 GAL.	30 GAL.
GREY WATER	30 GAL.	30 GAL.
AWNING	12'	15'
TIRE SIZE	15"	14"



SINGLE AXLE: STANDARDS/OPTIONS

EXTERIOR STANDARD FEATURES

- Aerodynamic Aluminum Front Cap
- E-Z Lube Axles
- Cable & Satellite Prep
- Digital TV Antenna w/Booster
- Extra Large, Aluminum Framed, Pass-thru Storage
- Gel Coat Fiberglass w/ Contemporary Graphics Package
- Heated and Fully-Enclosed Underbelly
- Hyper Lyte Construction - Amazingly Light!!
- Laminated "Aluma Frame" Side Walls and 2¼" Laminated Floor
- LED Lighted Exterior Speakers (2)
- One Touch Electric Awning
- Roadside Assistance
- Stabilizer Jacks
- XL Grab Handle
- 13.5 BTU Air Conditioning
- 1-20# LP Bottle

INTERIOR STANDARD FEATURES

- Decorative Kitchen Backsplash
- Deluxe Wood Booth Table Top
- Dometic Double Door 6 cu. ft. Gas/Electric Refrigerator
- Dometic Pedal Flush Toilet
- Fantastic Fan in Bathroom
- Full Extension Ball Bearing Drawer Guides
- LED Interior Lights
- Thermofoil Wrapped Kitchen Countertops
- 6 Gal. G/E DSI Water Heater

FAMILY CAMPING PACKAGE

- Aluminum Wheels
- Battery Disconnect
- Black Tank Flush
- Coat Rack
- Enclosed Holding Tanks w/12v Heat Pads
- Flip-Up Countertop Extension *(not available on all floorplans)*
- Flush-Mount Kitchen Sink Cover
- Outside Shower
- Radial Tires
- Second Bunk Window *(not available on all floorplans)*
- Sink Cover
- Skylight Over Tub/Shower
- Spare Tire & Carrier
- Teddy Bear Bunk Mats *(not available on all floorplans)*
- Upgraded Hidden Hinges on Cabinet Doors

PREMIUM PACKAGE FEATURES

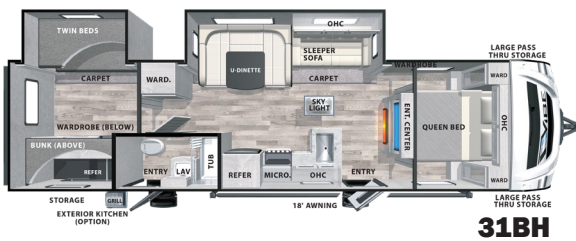
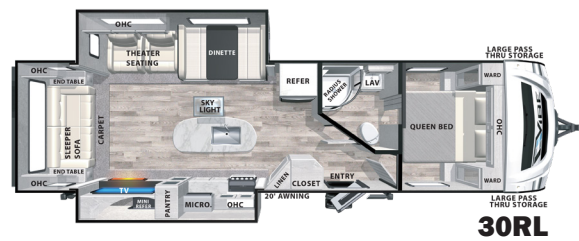
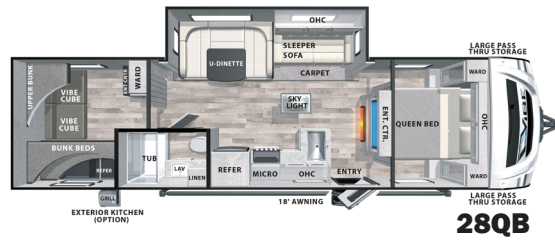
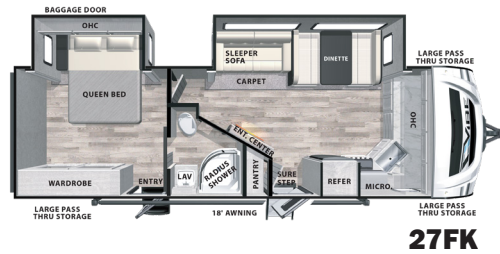
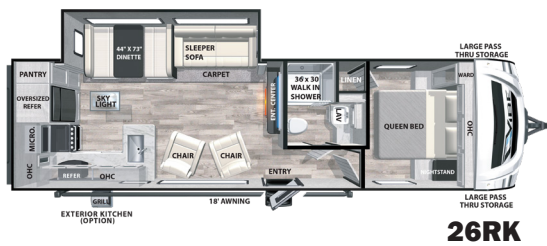
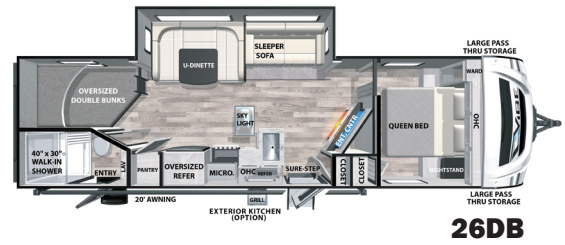
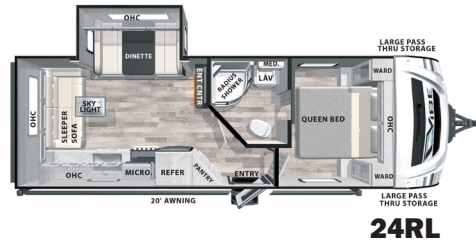
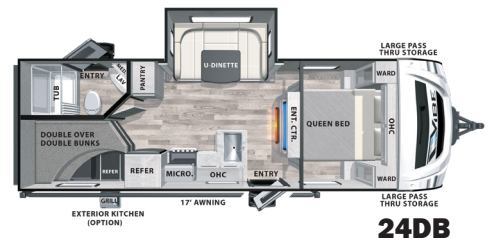
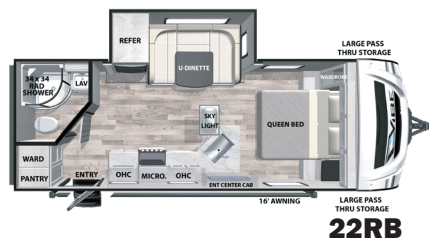
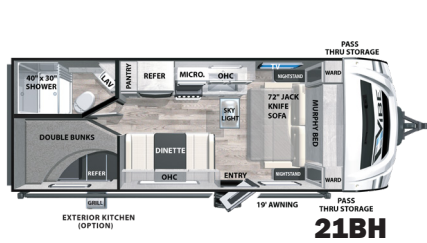
- Backup Camera Prep
- Bluetooth Stereo w/Speakers
- Decorative Window Treatments (dinette only)
- LED Awning Light
- Magnetic Latches On Access Doors
- Roller Shades With Automatic Stop
- Recessed 2-Burner Cooktop w/Glass Cover
- Seamless Countertop w/Undermount Single Bowl Stainless Steel Sink
- Solar Prep
- USB Port Package
- Upgraded Designer Kitchen Faucet

OPTIONS

- Outside Kitchen w/Grill



VIBE DOUBLE AXLE TRAVEL TRAILERS



All information contained in this brochure is believed to be accurate at the time of publication. However, during the model year, it may be necessary to make revisions and Forest River, Inc., reserves the right to make all such changes without notice, including prices, colors, materials, equipment and specifications as well as the addition of new models and the discontinuance of models shown in this brochure. Therefore, please consult with your Forest River dealer and confirm the existence of any materials, design or specifications that are material to your purchase decision.

© 2021 — Forest River Inc.,
A Berkshire Hathaway company



SPECIFICATIONS	21BH	22RB	24DB	24RL	25RK	26DB	26RK	27FK	27MK	28QB	30RL	31BH
LENGTH	25' 3"	25' 10"	28' 6"	28' 8"	29' 7"	34' 2"	34' 5"	32' 5"	33' 5"	35' 3"	35' 9"	36' 8"
HEIGHT	10' 10"	10' 10"	10' 10"	10' 10"	10' 10"	10' 10"	10' 10"	11' 2"	11' 2"	11' 0"	11' 2"	11' 2"
HITCH WEIGHT	594 lb.	536 lb.	629 lb.	633 lb.	634 lb.	803 lb.	768 lb.	1003 lb.	865 lb.	896 lb.	870 lb.	866 lb.
UNLOADED VEHICLE WEIGHT (UVW)	5,064 lb.	5,202 lb.	5,831 lb.	5,627 lb.	5,800 lb.	6,867 lb.	6,684 lb.	7,227 lb.	7,199 lb.	6,702 lb.	7,848 lb.	7,608 lb.
CARGO CARRYING CAPACITY (CCC)	2,530 lb.	2,334 lb.	1,798 lb.	2,006 lb.	1,834 lb.	2,736 lb.	2,884 lb.	2,576 lb.	2,466 lb.	2,994 lb.	1,822 lb.	2,058 lb.
FRESH WATER	38 GAL.	38 GAL.	38 GAL.	38 GAL.	38 GAL.	38 GAL.	38 GAL.	38 GAL.	38 GAL.	38 GAL.	38 GAL.	38 GAL.
BLACK WATER	32 GAL.	32 GAL.	32 GAL.	32 GAL.	33 GAL.	32 GAL.	32 GAL.	32 GAL.	32 GAL.	33 GAL.	33 GAL.	33 GAL.
GREY WATER	64 GAL.	64 GAL.	64 GAL.	64 GAL.	66 GAL.	96 GAL.	64 GAL.	64 GAL.	64 GAL.	66 GAL.	66 GAL.	66 GAL.
AWNING	17'	16'	17'	18'	16'	20'	20'	20'	20'	18'	20'	19'
TIRE SIZE	14"	15"	15"	14"	14"	15"	15"	15"	15"	15"	15"	15"



VIBE

STANDARDS/OPTIONS

EXTERIOR STANDARD FEATURES

- Aerodynamic Fiberglass Front Cap
- Cable & Satellite Prep
- Digital TV Antenna w/Booster
- Ducted 13.5 BTU Air Conditioning
- E-Z Lube Axles
- Extra Large, Aluminum Framed, Pass-thru Storage
- Gel Coat Fiberglass w/ Contemporary Graphics Package
- Heated and Enclosed Underbelly
- Hyper Lyte Construction - Amazingly Light!!
- Laminated "Aluma Frame" Side Walls And 2¼" Laminated Floor
- Led Lighted Exterior Speakers (2)
- High Efficiency A/C Cooling System (*larger duct work*)
- One Touch Electric Awning
- Roadside Assistance
- Stabilizer Jacks
- XL Grab Handle
- 2- 20# LP Bottles

INTERIOR STANDARD FEATURES

- Decorative Kitchen Backsplash
- Deluxe Wood Booth Table Top
- Dometic Pedal Flush Toilet
- Full Extension Ball Bearing Drawer Guides
- Full 80" Ceiling
- Glass in Kitchen Cabinets
- Hard Doors to Bedrooms for Privacy (*not curtains*)
- Large Trash Can w/Designated Out-Of-The-Way Area
- Thermofoil Wrapped Kitchen Countertops
- Upgraded Residential Style Carpet
- 3-Burner Cook Top w/Black Oven
- 6 Gal. G/E DSI Water Heater

FAMILY CAMPING PACKAGE

- Aluminum Wheels
- Battery Disconnect
- Black Tank Flush
- Coat Rack
- Fantastic Fan
- Flip-Up Countertop Extension (*not available on all floorplans*)
- Flush-Mount Kitchen Sink Cover
- Outside Shower
- Radial Tires
- Second Bunk Window (*not available on all floorplans*)
- Skylight Over Tub
- Spare Tire & Carrier
- Teddy Bear Bunk Mats (*not available on all floorplans*)
- Upgraded Hidden Hinges on Cabinet Doors
- 2 - Pots/Pans Drawers

PREMIUM PACKAGE FEATURES

- Backup Camera Prep
- Bluetooth MP3/DVD/CD/FM w/Sound Bar
- Decorative Window Treatments (livingroom only)
- Electric Fireplace w/Crystals (*not available on all floorplans*)
- LED Awning Light
- Flat Screen TV (*sizes vary by model*)
- LED Interior Lights

- Magnetic Latches On Access Doors
- Outside Kitchen (*n/a on some models*)
- Power Tongue Jack
- Roller Shades With Automatic Stop
- Seamless Countertop w/Undermount Single Bowl Stainless Steel Sink & Designer Pull-Out Kitchen Faucet
- Solar Prep
- Solidstep Triple Step (*main entrance only*)
- True Stabilizer Jacks w/JT Strong Arms
- Upgraded Black Appliance Package
- USB Port Package
- Upgraded Pillowtop Mattress
- Friction Hinge Entry Door
- 8 Cu. Ft. Gas/Electric Refrigerator

OPTIONS

- Back Pack Rack
- Free-Standing Table & Chairs
- Tri-Fold Sofa Sleeper
- 2nd 13.5k A/C In Bedroom w/50 AMP Service
- 12v Heated Strips on Holding Tanks
- 15k BTU Ducted A/C IPO 13/5k
- 30# LP Bottles w/Cover
- 50 AMP Service w/Wire & Brace for 2nd A/C

