



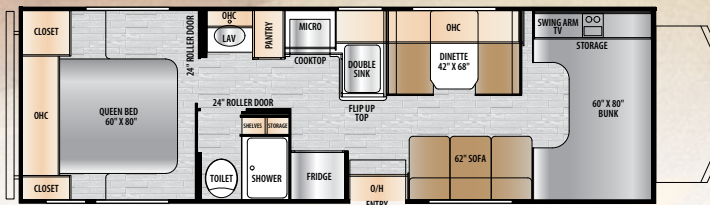
# Entrada

*a journey into unexplored territory*

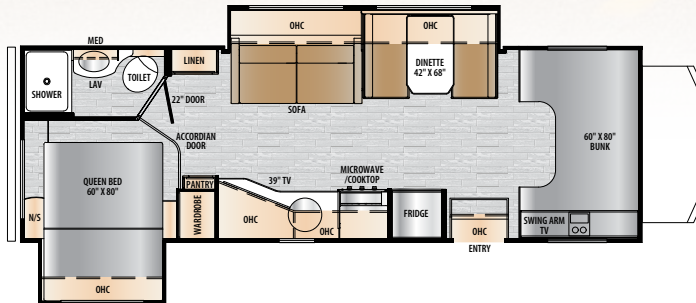
## CLASS C MOTOR HOMES



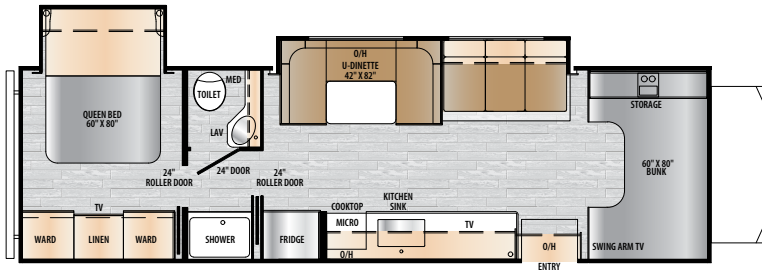
**2200S**



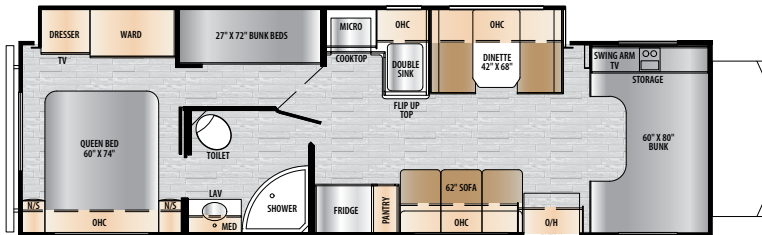
**2700NS**



**2600DS**



**2900DS**



**3100FB**



# ENTRADA SPECIFICATIONS

CLASS C GAS	2200S	2700NS	2600DS	2900DS	3100FB
ENGINE	Ford	Ford	Ford	Ford	Ford
WHEEL BASE	158"	190"	190"	220"	220"
GVWR (lbs)	14,500	12,500	14,500	14,500	14,500
GAWR (Rear)	9,600	8,500	9,600	9,600	9,600
GAWR (Front)	5,000	5,000	5,000	5,000	5,000
UVW (lbs)	10,550	TBD	TBD	TBD	TBD
GCWR (lbs)	22,000	18,500	22,000	22,000	22,000
CCC (lbs)	3,950	TBD	TBD	TBD	TBD
Fuel Capacity (gal)	55	55	55	55	55
Hitch Rating	5,000	5,000	7,500	7,500	7,500
Tongue Weight	500	500	500	500	500
Length Bumper to Bumper	23' 10"	29' 11"	29' 4"	32' 3"	32' 6"
Exterior Height w/A/C	11' 3"	11' 3"	11' 3"	11' 3"	11' 3"
Exterior Width	101"	101"	101"	101"	101"
Interior Width	95.5"	95.5"	95.5"	95.5"	95.5"
Interior Height	84"	84"	84"	84"	84"
Fresh Water (gal)	35	35	35	35	35
Grey Holding Tank (gal)	32	32	32	32	64
Black Holding Tank (gal)	27	32	32	32	27
LP Capacity (gal)	9.8	9.8	9.8	9.8	9.8
Awning Length	14'	20'	12' 6"	22'	18'
Water Heater (gal)	6	6	6	6	6
Exterior Storage (cu ft)	28	TBD	TBD	TBD	TBD

**GVWR (Gross Vehicle Weight Rating)** is the maximum permissible weight of the unit when fully loaded. It includes all weights, inclusive of all fluids, occupants, cargo, optional equipment and accessories. For safety and product performance do NOT exceed the GVWR.

**GCWR (Gross Combined Weight Rating)** is the maximum permissible loaded weight of your motor home and any towed trailer or towed vehicle. Actual GCWR of this vehicle may be limited by the sum of the GVWR and the installed hitch receiver maximum capacity rating; see hitch rating label for detail.

**GAWR (Gross Axle Weight Rating)** is the maximum permissible weight, including cargo, fluids, optional equipment and accessories that can be safely supported by each axle.

**UVW (Unloaded Vehicle Weight)\*** is the typical weight of the unit as manufactured at the factory. It includes all weight at the unit's axle(s), including full fuel, all fluids and LP Gas. The UVW does not include cargo, fresh potable water, additional optional equipment or dealer installed accessories.

\*Estimated Average based on standard build optional equipment.

**CCC (Cargo Carrying Capacity)\*\*** is the amount of weight available for fresh potable water, cargo, passengers, additional optional equipment and accessories. CCC is equal to GVWR minus UVW. Available CCC should accommodate fresh potable water (8.3 lbs per gallon). Before filling the fresh water tank, empty the black and gray tanks to provide for more cargo capacity.

\*\* Estimated average based on standard build optional equipment

Each Forest River motorhome is weighed at the manufacturing facility prior to shipping. A label identifying the unloaded vehicle weight of the actual unit and the cargo carrying capacity is applied to every Forest River motorhome prior to leaving our facilities.

The load capacity of your unit is designated by weight, not by volume, so you cannot necessarily use all available space when loading your unit.

Actual towing capacity is dependent upon your particular loading and towing circumstances, which includes the GVWR, GAWR and GCWR as well as adequate trailer brakes. Please refer to the Operator's Manual of your vehicle for further towing information.

All information contained in this brochure is believed to be accurate at the time of publication. However, during the model year, it may be necessary to make revisions and Forest River reserves the right to make all such changes without notice, including prices, colors, materials, equipment and specifications as well as the addition of new models and the discontinuance of models shown in this brochure. Therefore, please consult with your Forest River dealer and confirm the existence of any materials, design or specifications that are material to your purchase decision.

**Learn More**  
Scan this barcode using a QR Reader on your smart phone to learn more about Forest River.

A Berkshire Hathaway company.

**CUSTOMER SATISFACTION**

**www.ForestRiverBuyLocal.com**

**24/7 EMERGENCY  
ROADSIDE ASSISTANCE  
WITH VEHICLE PURCHASE\***

---

TOWING  
JUMP-STARTS  
TIRE CHANGES  
FLUID DELIVERY  
LOCKOUT SERVICE

WINCH-OUT  
MOBILE MECHANIC  
TECHNICAL SUPPORT  
DEALER LOCATOR SERVICES

\*VALID FOR 1 YEAR FROM DATE OF PURCHASE

**FREE MEMBERSHIP**

to Forest River Owners' Group

www.forestriverfrog.com

**EAST TO WEST takes pride in our five guiding principles and our corporate philosophy, which focuses on people working together to create high quality, value-added products that deliver the ultimate RV experience!**

@easttowestrv    EAST TO WEST RV

SUSTAINABLE MANUFACTURING	CORPORATE & SOCIAL RESPONSIBILITY	CULTURE & VALUES	QUALITY & CONSTRUCTION	OUR COMMITMENT
<p>An important objective to strategy and operations is to implement economically sound manufacturing processes to reduce, recycle waste &amp; conserve energy and natural resources.</p>	<p>We foster a business environment in which we focus on and practice:</p> <ul style="list-style-type: none"> <li>– Teamwork</li> <li>– Philanthropy</li> <li>– Volunteering</li> </ul>	<p>We are a forward thinking company committed to fostering a culture of teamwork. By being transparent, we encourage our employees to think outside the box and make a difference!</p>	<p>Our team takes pride in each unit we build. Our manufacturing standards and point-to-point inspections ensure each EAST TO WEST brand is built to the same quality specifications every time.</p>	<p>We strive to provide the highest quality products at the best possible price to our customers. We invite you to be a part of the EAST TO WEST family and we look forward to exceeding your expectations!</p>

YOUR *Entrada* DEALER

**3000 CR 6 W | ELKHART, IN 46514 | 574.264.6664 | www.EASTTOWESTRV.com**

© 2021 East to West, Inc. a Division of Forest River, Inc., a Berkshire Hathaway Company. All Rights Reserved.

All information contained in this brochure is believed to be accurate at the time of publication. However, during the model year, it may be necessary to make revisions and Forest River, Inc., reserves the right to make all such changes without notice, including prices, colors, materials, equipment and specifications as well as the addition of new models and the discontinuance of models shown in this brochure. Therefore, please consult with your Forest River, Inc., dealer and confirm the existence of any materials, design or specifications that are material to your purchase decision. 04/21