

VACATIONER
by HOLIDAY RAMBLER

CLASS A GAS

2021

holidayrambler.com



HOLIDAY RAMBLER



#thisisliving

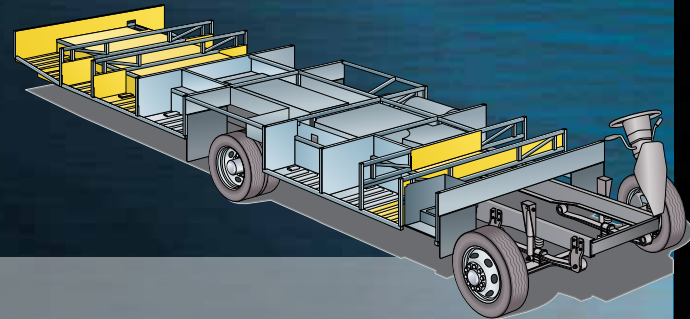
For our gas chassis, we take the Ford® drivetrain and create a solid platform to build on. The result is enhanced balance and control, as well as the strength to carry more weight. The design also allows for larger pass-through storage.



Power Platform Chassis

The Power Platform puts strength, stability, and reliability front and center. Perfect for trips requiring large carrying capacities, and built to store everything you need with spacious pass-through storage, the Truss Style Platform is the ideal chassis for optimum balance and control — Found on Holiday Rambler Vacationer gas motorhomes.

Every new adventure requires a solid foundation. The Power Platform chassis is designed with balance, control, a smooth ride, and ample space in mind, all working together to give you a ride like no other RV can provide.



RV OWNERCARE

Limited one-year/15,000-mile coach warranty and three-year/45,000-mile structural warranty, whichever occurs first, and it is fully transferable for the first 12 months. RV OWNERCARE is one of the RV industry's most comprehensive programs and includes systems, appliances, components and construction, with no deductible and no service charge.

Chassis Warranty provided by Ford®



HOLIDAY RAMBLER



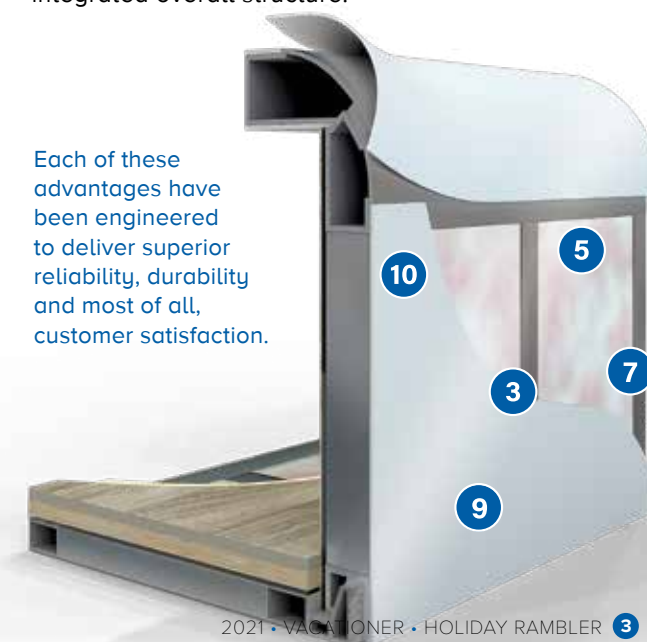
We build strength and quality from the inside out.

Holiday Rambler's exclusive Powerlock™ system is integrated into all Holiday Rambler Class A Gas models.



At Holiday Rambler, we don't settle for anything less than the best and neither should you. That is why every Holiday Rambler features industry-leading materials and construction standards.

- 1 PowerLock System™**
Interlocking Floors, Walls, Ceiling
Holiday Rambler's interlocking aluminum extrusion wall-joint system integrates floor, sidewall and roof assembly into one locked-together overall structure for long-term performance and durability.
- 2 Precision Welded Joints**
The all aluminum hull structure is engineered and built to precise tolerances and then precision welded to ensure strength and durability on even the roughest road trip.
- 3 Tuff-Coat Fiberglass Walls**
Thicker than other manufacturers, our Tuff-Coat fiberglass walls provide a durable skin and is the perfect surface for an automotive style finish.
- 4 Thick Robust Floor**
Thicker than the industry standard, Fleetwood engineered the floor for more sound deadening and more insulation which results in a quieter, more comfortable ride no matter the weather or terrain outside.
- 5 Solid Bead-Foam Insulation™**
Holiday Rambler's above-standard insulation material and process doesn't allow settling or air gaps to form. There is no forcing the precision cut insulation into position like the roll-type pink fiberglass insulation used by other manufacturers.
- 6 Loctite® Industrial Adhesive**
Engineered to meet bonding, sealing and assembly requirements for a durable structure with no de-lamination.
- 7 No Wood Substrate**
Unlike most Class A motorhome manufacturers, you won't find any wood substrate on the exterior walls.
- 8 1/2" Plywood Subfloor**
Thicker than most competitors who use OSB or chip board, the integrated 1/2" subfloor provides a solid surface for flooring and eliminates movement and flexing while traveling.
- 9 Vacu-Bond™ Construction**
Fully sealed and weather-resistant, the vacuum-bonded assemblies combine materials and construction for a straight, solid integrated wall that is better suited to withstand the rigors of the road. An adhesive bonding process applies up to 415,000 pounds of vacuum pressure to the welded-aluminum sidewall frame, bead-foam insulation, thick Tuff-Coat fiberglass skin and inner wall materials, far exceeding industry standards.
- 10 CNC Precision Routed Walls and Floors**
Computer driven routers precisely route walls and floors to fit exact specifications to eliminate gaps, misalignments and provide for a more solid integrated overall structure.



Each of these advantages have been engineered to deliver superior reliability, durability and most of all, customer satisfaction.

VACATIONER 35P

Shown in Waterfront Decor with Nutmeg Cabinetry





VACATIONER 35K
Shown in Eclipse Decor with Nutmeg Cabinetry



VACATIONER 35P
Nutmeg Cabinetry

VACATIONER
by HOLIDAY RAMBLER

CLASS A GAS

A Personal Concierge — on wheels.

The 2021 Holiday Rambler Vacationer is the “getaway vehicle” you’ll never want to leave. Soothing colors and subtle textures on the interior options make it feel like a cozy cocoon, while an electric fireplace on the feature wall adds ambiance and warmth standard on all floorplans. Dual 15,000-BTU air conditioning units keep up with the weather. And if you decide to stay for a spell, the 100W solar panel helps you relax without relying on resort amenities. Meanwhile, an Illumaplex MultiPlex control system and mobile app lets you easily set up camp and keep it comfortable—whether you’re inside or outside. We call it the “Vacationer.” But with amenities like this, you’d be lucky to live in it year-round.

[Floorplans available 33C | 35K | 35P | 36F.](#)

2021







VACATIONER
by HOLIDAY RAMBLER

CLASS A GAS

2021

VACATIONER 35P

Shown in Waterfront Decor with Nutmeg Cabinetry

VACATIONER 35P

Shown in Waterfront Decor with Nutmeg Cabinetry





VACATIONER
by HOLIDAYRAMBLER

2021



holidayrambler.com



VACATIONER 36F



CONFIDENCE BEHIND THE WHEEL

From behind the wheel you will feel the power and feel in total control with digital information gauges, cruise control, 6" color monitor for side and rear cameras, Sony® 9" stereo system with Bluetooth® connectivity, CarPlay®, and SiriusXM® ready along with a backup camera.

AUTO HYDRAULIC LEVELING SYSTEM

Save time and avoid hassle by leveling and stabilizing your RV with the push of a button conveniently located on the dash

CENTER CONSOLE

New for 2021 Driver/Passenger caddy area with three cupholders, USBs and various storage compartments





VACATIONER
by HOLIDAY RAMBLER

CLASS A GAS

2021

Visit our website and find the
closest dealer near you.



holidayrambler.com

#thisisliving

VACATIONER FLOORPLANS

TOP FLOORPLAN FEATURES

33C

- Dual Dash Monitors
- Fiberglass Shower w/Skylight
- 2000W Inverter
- Full Body Paint
- 40" LED TV and Soundbar w/Bluetooth®
- Flush Floor Slide-outs at Living Area

35K

- Bath and a Half
- Residential Refrigerator w/French Door and Ice Maker
- Power Entry Step
- Bus-style Luggage Doors
- 40" LED TV and Soundbar w/Bluetooth®
- Flush Floor Slide-outs at Living Area

35P

- Stackable Washer/Dryer
- Convection Microwave
- 98" Sofa w/Incliner
- Pass-through Exterior Storage
- 40" LED TV and Soundbar w/Bluetooth®
- Flush Floor Slide-outs at Living Area

36F

- Surge Protection
- Tarkett® Flooring
- Tankless Water Heater
- Bunk Beds with Convertible Wardrobe/Seating Area
- 40" LED TV and Soundbar w/Bluetooth®
- 26,000# Chassis
- Trailer Hitch w/7-Way Round Tow Connection (8,000 lbs.)

VACATIONER OPTIONS

- 089 Upgraded WIFI Package
- 096 King® Universal Satellite System
- 113 Range 3-Burner Drop in w/Oven
- 126 Washer/Dryer — All in one combo
- 194 Theater Seating
- 220 Hide-A-Loft™ Drop Down Queen Bed (500# Capacity) w/24" LED TV
- 304 Solar Electrical Panel - 265w
- 470 SumoSprings® — Front/Rear
- 471 Steering Stabilizer
- 580 Garmin® Collision Mitigation
- 671 Manual Power Cord Reel
- 833 Free Standing Dinette w/Credenza



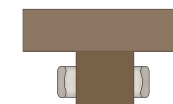
OPT 113
RANGE 3-BURNER
DROP-IN w/OVEN



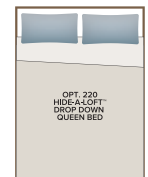
OPT 126
WASHER/
DRYER
ALL-IN-ONE
COMBO



OPT 194
78" THEATER SEATING

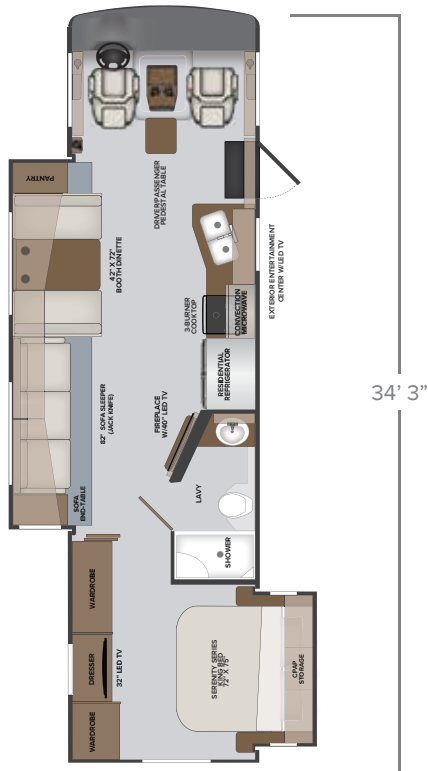


OPT 833
FREE STANDING DINETTE
w/CREDENZA



OPT 220
HIDE-A-LOFT™
DROP DOWN
QUEEN BED

33C

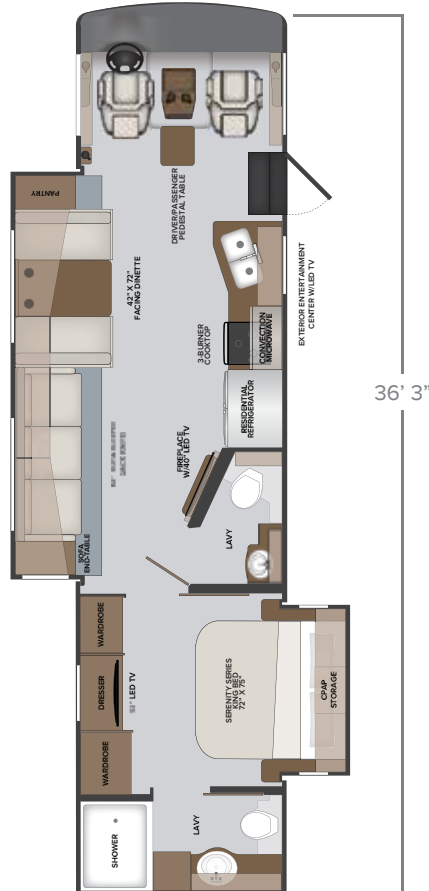


33C OPTIONS

089 | 096 | 113 | 126 | 194 | 220 | 304
| 470 | 471 | 580 | 671 | 833

SLEEPS
up to 6

35K

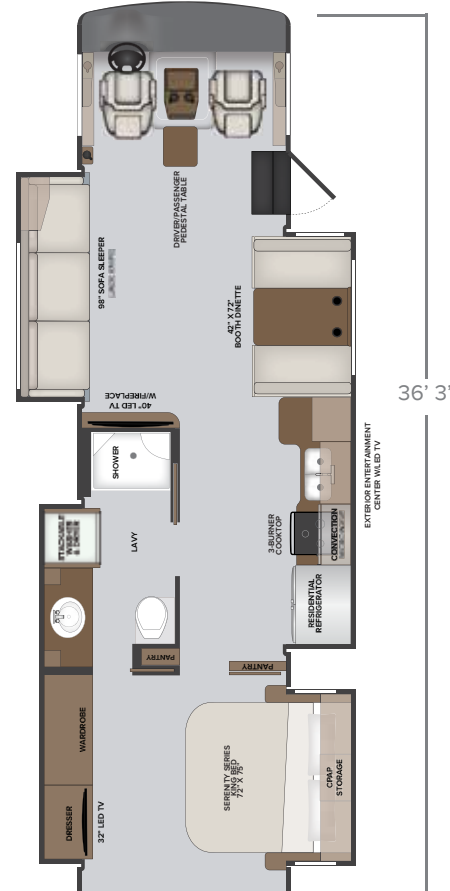


35K OPTIONS

089 | 096 | 113 | 126 | 194 | 220
| 304 | 470 | 471 | 580 | 671 | 833

SLEEPS
up to 6

35P

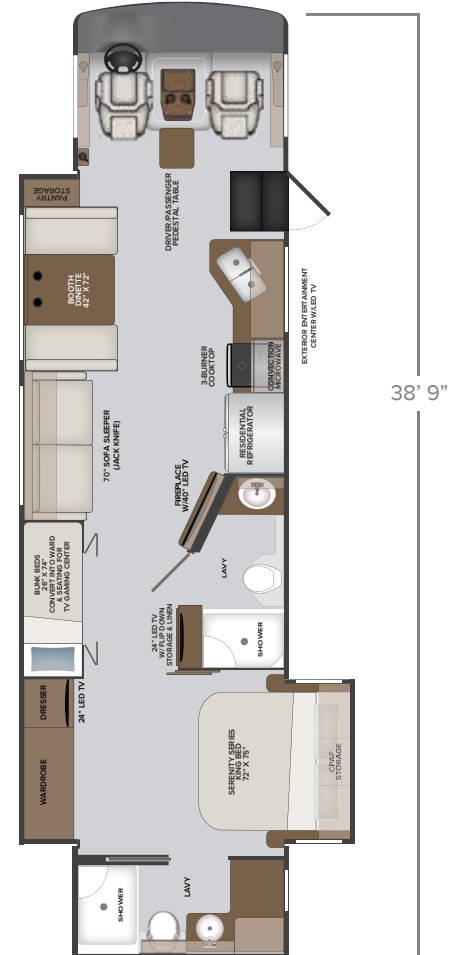


35P OPTIONS

089 | 096 | 113 | 220
| 304 | 470 | 471 | 580 | 671 | 833

SLEEPS
up to 6

36F



36F OPTIONS

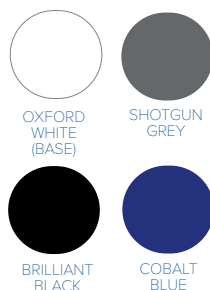
089 | 096 | 113 | 126 | 220 | 304
| 470 | 471 | 580 | 671

SLEEPS
up to 6

VACATIONER EXTERIOR GRAPHICS



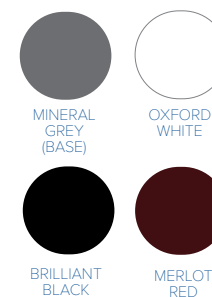
ROYAL



SHADOW



NOVA



SUMOSPRINGS® CHASSIS STABILIZER SYSTEM (FRONT & REAR, UPGRADE)

Are a patented suspension product designed to enhance load carrying capacity, stabilize sway, and improve overall driver control and ride comfort. Maintenance-free, do not leak air, and do not require airlines/compressors. Reduces vibration, wear and tear which affects the tires, suspension, brakes, furniture, hinges and more! SumoSprings are an upgrade that reduces ownership costs by decreasing overall wear and tear, increasing the life of each component of your Holiday Rambler. This increase means reduced costs on maintenance and replacement parts resulting in a lower total cost of ownership.

BILSTEIN® STEERING STABILIZER SYSTEM (UPGRADE)

Bilstein steering stabilizer system is a shock absorber system that dampens the bumps and vibrations of the road in the steering system. Bilstein allows for easier control to the front-end steering.



VACATIONER DECOR

ECLIPSE



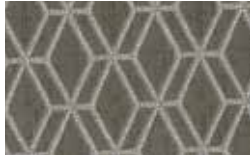
SOFA



LIVING ACCENT



BEDSPREAD



VALANCE



BACKSPLASH



COUNTERTOP



FLOORING

MOONSCAPE



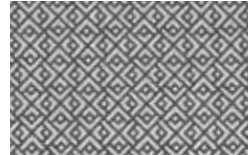
SOFA



LIVING ACCENT



BEDSPREAD



VALANCE



BACKSPLASH



COUNTERTOP



FLOORING

WATERFRONT



SOFA



LIVING ACCENT



BEDSPREAD



VALANCE



BACKSPLASH



COUNTERTOP



FLOORING



AMBER



FOSSIL



NUTMEG



WHISPERING WIND

INTERIOR DESIGNER RECOMMENDATIONS:

- Eclipse Decor with Amber or Nutmeg Cabinetry
- Moonscape Decor with Fossil or Whispering Wind Cabinetry
- Waterfront Decor with Fossil or Whispering Wind Cabinetry



VACATIONER

EXTERIOR	33C	35K	35P	36F
Aerodynamic Fiberglass Cap w/ Automotive-Style Headlighting	S	S	S	S
Rear Fiberglass Cap w/Automotive-Style Lighting	S	S	S	S
ABS Wheel Well Skirts	S	S	S	S
TPO Roof: Thermoplastic Polyolefin	S	S	S	S
Electric Patio Awning w/LED Lighting and Motion Sensor	S	S	S	S
Slide-out Awning Toppers Above All Slide-outs	S	S	S	S
Radiused Entry Door w/Screen Door, Latch, and Deadbolt Lock	S	S	S	S
Luggage Door Handles, Black	S	S	S	S
Acrylic Lighted Entry Grab Handle	S	S	S	S
Power Entry Step w/Light	S	S	S	S
Side-Swing Aluminum Bus-Style Baggage Doors	S	S	S	S
Dual-Pane Frame-less Windows	S	S	S	S
Patio LED Light	S	S	S	S
Clearance and Marker Lighting at Front, Side, and Rear	S	S	S	S
Automatic Generator Start	S	S	S	S
Gravity Fresh Water Fill	S	S	S	S
Service Station: Water Pump Switch, Exterior Shower, Black Tank Flush, City Water Hook-Up, and Drainage Valves	S	S	S	S
Park Cable and Satellite Hook-Up	S	S	S	S
Trailer Hitch w/7-Way Round Tow Connection (5,000 lbs.)	S	S	S	—
Trailer Hitch w/7-Way Round Tow Connection (8,000 lbs.)	—	—	—	S
Unidirectional KING® Controls Jack TV Antenna	S	S	S	S
LP Connection	S	S	S	S
4-Point Fully-Automatic Hydraulic Leveling Jacks	S	S	S	S
Rear Ladder	S	S	S	S
Premier Paint: Full-Body, 4-Color w/Front Clear Mask	S	S	S	S
Roof Vent Rain Covers	S	S	S	S
KING® Universal Satellite System	O	O	O	O

CAB EXTERIOR	33C	35K	35P	36F
Automotive-Style One-Piece Windshield	S	S	S	S
Daytime Running Lights	S	S	S	S
Driver and Passenger Tinted Slider Windows	S	S	S	S
Fog Lamps	S	S	S	S
Automotive-Style Windshield Wiper System	S	S	S	S
Remote Power and Heated Black/Chrome Mirrors w/Turn Signals and Side Cameras	S	S	S	S
Sumo Springs	O	O	O	O
Bilstein® Steering Stabilizer	O	O	O	O
CAB INTERIOR	33C	35K	35P	36F
Driver Chair w/Reclining Back, Swivel, and 6-Way Power Controls	S	S	S	S
Passenger Chair w/Manual Footrest, Reclining Back, and Swivel	S	S	S	S
Driver and Passenger ABS-Style Armrests	S	S	S	S
Driver and Passenger Cupholders	S	S	S	S
Power Windshield Roller Shade	S	S	S	S
Driver and Passenger Manual Roller Shades	S	S	S	S
Overhead Map Flexible Lighting at Driver and Passenger	S	S	S	S
Black Instrument Gauges w/ Electronic Information Center	S	S	S	S
High-Output Dash Air Conditioning and Heat	S	S	S	S
Electronic Cruise Control	S	S	S	S
Windshield Wipers w/Delay	S	S	S	S
Remote Switch for Power and Heated Mirrors	S	S	S	S
Steering Wheel w/Tilt Column	S	S	S	S
6" Color Monitor for Side and Rear Cameras	S	S	S	S
Sony® 9" Stereo w/AM/FM/Bluetooth®/ MP3/USB, Phone Control: Android® Auto and Apple® CarPlay® w/Navigation, Siri® Eyes Free, Built-In HD Stereo, SiriusXM® Ready (Requires Subscription), and Backup Camera	S	S	S	S
Garmin® Collision Mitigation System	O	O	O	O

Sony® 6 1/2" Stereo Speakers	S	S	S	S
SiriusXM® Satellite Radio Ready (Requires Subscription)	S	S	S	S
USB and Auxiliary Inputs	S	S	S	S
Seatbelts: 3-Point Driver and Passenger w/Adjustable Straps	S	S	S	S
12V Accessory Ports	S	S	S	S
110V AC Outlets	S	S	S	S
Automotive-Style Dash w/Dual Monitors and Workstation	S	S	S	S
Cab Lights	S	S	S	S
Generator On/Off Switch	S	S	S	S
Battery Booster Switch	S	S	S	S
Engine Cover w/Snack Tray	S	S	S	S
Cab Floor Mats	S	S	S	S
Cab Area Fans	S	S	S	S
Automatic Leveling Jack Controls	S	S	S	S
Center Table at Driver/Passenger	S	S	S	S
Auxiliary Start Switch	S	S	S	S
Hide-A-Loft™ Drop-Down Queen-Sized Bed w/24" LED TV	O	O	O	O
INTERIOR	33C	35K	35P	36F
Sofa: Tri-fold	—	—	—	S
Sofa: Tri-fold w/Facing Booth Dream Easy® Dinette	—	—	S	—
Sofa: Jackknife	S	S	—	—
Sofa: Theater Seating	O	O	—	O
Facing Booth Dinette w/Dream Easy® Dinette Table	S	S	S	S
Free-Standing Dinette w/Credenza	O	O	O	—
Solid-Surface Galley Top	S	S	S	S
Surf(x)® Tops Throughout (Excluding Galley)	S	S	S	S
Electric Fireplace	S	S	S	S
Feature Wall w/Accent Wall Covering	S	S	S	S
Flat Ceiling w/Soft-Touch Vinyl	S	S	S	S
Vinyl Tile Flooring Throughout	S	S	S	S
Ozite-Lined Cabinet Interiors	S	S	S	S
Cedar-Lined Wardrobe Interiors (Select Locations)	S	S	S	S

Full-Extension Drawer Guides w/Latches	S	S	S	S
Hidden Euro-Style Hinges and Struts	S	S	S	S
Solid-Wood Raised-Panel Cabinet Doors	S	S	S	S
Slide-out Fascia: Interior Wood Color Coordinating	S	S	S	S
Window Valances w/Lambrequins	S	S	S	S
Manual Day/Night Roller Shades	S	S	S	S
Energy-Efficient 3" LED Flush-Mounted Ceiling and Under Cabinet Reading Lights Throughout	S	S	S	S
Flush Floor Slide-outs at Living Area	S	S	S	—
Brushed-Nickle Faucets, Fixtures, and Hardware	S	S	S	S
INTERIOR ENTRY	33C	35K	35P	36F
Battery Disconnect	S	S	S	S
Metal Entry Grab Handle	S	S	S	S
Multiplex Electric Controls w/App Control	S	S	S	S
Entry Door Manual Roller Shade	S	S	S	S
Entry Steps w/Lighted Step Well	S	S	S	S
KITCHEN	33C	35K	35P	36F
Refrigerator: Stainless Steel Samsung® Residential w/French Doors and Icemaker	S	S	S	S
3-Burner Cooktop w/Solid-Surface Covers	S	S	S	S
3-Burner Drop-In Range w/Oven	O	O	O	O
Stainless Steel Over-the-Range Convection Microwave	S	S	S	S
Tile Backsplash	S	S	S	S
Large Galley Window w/Tiled Window Box	S	S	—	S
Sink: Stainless Steel, Deep Double Bowl, Undermount	S	S	S	S
Solid-Surface Sink Covers	S	S	S	S
Residential Single-Handled Faucet w/Pull-Out Sprayer	S	S	S	S
Adjustable Shelves Throughout	S	S	S	S
Fan-Tastic® Power Ceiling Vent	S	S	S	S
Wastebasket	S	S	S	S
Manual Night Roller Shade	S	S	S	S

BEDROOM OR BUNK AREA	33C	35K	35P	36F
King-Sized Memory Foam Mattress	S	S	S	S
Bunk Beds (Multi-Purpose Flip Bunk for Wardrobe and Seating w/Doors)	—	—	—	S
Designer Bedspread, Headboard, Pillow Shams, and Pillows	S	S	S	S
C-PAP Machine Prep at Bedroom Overhead	S	S	S	S
120V and USB Ports	S	S	S	S
BATHROOM	33C	35K	35P	36F
Top-Mounted Porcelain Sink	—	S	—	—
Top-Mounted Stainless Steel Sink	S	S	S	S
Single-Handled Residential Faucet	S	S	S	S
Medicine Cabinet w/Mirror	S	S	S	S
Fiberglass Shower Surround	S	S	S	S
Glass Shower Door	S	S	S	S
Shower Skylight	S	S	S	S
Metal Shower Head w/Sliding Adjustable Bar, Soap Dish, and Matching Single-Valve Faucet	S	S	S	S
Porcelain Macerator Toilet	S	S	—	S
Porcelain Standard Toilet	—	—	S	—
Fan-Tastic® Power Ceiling Vent	S	S	S	S
ENTERTAINMENT	33C	35K	35P	36F
40" Flat Screen LED TV (Living Area)	S	S	S	S
32" Flat Screen LED TV (Bedroom)	S	S	S	—
24" Flat Screen LED TV (Bedroom)	—	—	—	S
24" Flat Screen LED TV (Bunk Area)	—	—	—	S
24" Flat Screen LED TV (Front Overhead w/ Hide-A-Loft™ Drop-Down Bed Opt.)	O	O	O	O
HDMI Video Distribution	S	S	S	S
Soundbar w/Blu-Ray® Player	S	S	S	S
Entertainment Center: 40" LED TV and Soundbar w/Bluetooth®	S	S	S	S
ELECTRIC AND UTILITIES	33C	35K	35P	36F
Air Conditioner: Dual 15,000 BTU w/ Chill Grill and Rear Heat Pump	S	S	S	S
Furnace: 34,000 BTU	S	S	S	—
Furnace: Dual 30,000/20,000 BTU	—	—	—	S
50 Amp Service	S	S	S	S

60 Amp Power Converter	S	S	S	S
Single 2000W Pure Sine Inverter	S	S	S	S
WiFiRanger™ Sky4	S	S	S	S
WiFiRanger™ SkyPro Pack w/LTE and GPS	O	O	O	O
100W Solar Panel	S	S	S	S
265W Solar Panel	O	O	O	O
Multiplex Wiring Control System w/7" Touch Screen Panel and App Control	S	S	S	S
Auxiliary Batteries 6V (4)	S	S	S	S
Neutral Loss Protection	S	S	S	S
Generator: 5.5kW Onan	S	S	S	S
Automatic Generator Start	S	S	S	S
Master Battery Disconnect Switch	S	S	S	S
12V 3GPM High-Capacity SHURflo® Water Pump	S	S	S	—
12V 5.3GPM High-Capacity AquaJet Water Pump	—	—	—	S
Water Purification System	S	S	S	S
Water Heater Bypass System	S	S	S	S
Exterior Shower	S	S	S	S
Cable TV and Satellite Hook-Up	S	S	S	S
San-T-Flush™ Black Holding Tank Flush System	S	S	S	S
Single-Location Monitor Panel w/ LPG, Touch Sensor Tank Monitoring and Battery Readouts	S	S	S	S
Fire Extinguisher, LP, Carbon Monoxide, and Smoke Detectors	S	S	S	S
GFCI Receptacle in Exterior Storage	S	S	S	S
Combination Washer and Dryer	O	O	—	O
Stackable Washer and Dryer	—	—	S	—
Combination Washer and Dryer Prep	S	S	—	S
10 Gallon Water Heater	S	S	S	—
Tankless Water Heater	—	—	—	S
50 Amp Shoreline Power Cord	S	S	S	S
Power Cord Reel	O	O	O	O

VACATIONER TOP FEATURES



RENEWABLE SAFE POWER

Each Vacationer comes standard with 100w roof solar panel. With option 304 you may upgrade to a 265w solar panel.

WIFI RANGER™ SKY4 DC (STANDARD)

Boost a weak signal to get online in no time with this private secure WiFi booster.



WIFI RANGER™ SKY4 PROPACK w/LTE
Upgrade to this cellular internet modem that includes a cell booster and GPS upgrade.



KING SIZE BED WITH WOLF® MATTRESS

Sleep like royalty in a Serenity Series king bed with a custom memory foam mattress made exclusively for Holiday Rambler. Shown Vacationer 35P in Waterfront decor with Nutmeg cabinetry. Cedar-lined wardrobe closet is standard on every Vacationer.



WASHER AND DRYER

Stackable is standard on 35P shown.

Combination is optional on 33C, 35K, 36F

HIDE-A-LOFT™ DROP DOWN QUEEN BED

Optional on Vacationer is a Hide-A-Loft drop down queen sized bed including a mattress and a 24" LED TV. The additional area boasts a 500lb capacity and industry leading headroom.



50 AMP ENERGY MANAGEMENT SYSTEM

Protect your Vacationer against expensive electrical damage and enjoy the convenience of an auto generator start to charge batteries when they need some juice. Set your EMS system and return from a hike to a temperature controlled home.



BONDED WINDSHIELD

Feel safer with this automotive style curved bonded windshield. This automotive inspired design bonds the windshield along the entire perimeter of the glass. This increases the structural strength and also reduces the risk of stress cracks.



C-PAP READY

This convenient storage solution is specifically designed to organize and conceal C-PAP machines while allowing for easy access and opening for hoses.



SOFA SLEEPER

The 35P floorplan features a 98" sofa sleeper (jack knife), shown here open for additional guests.



ADJUSTABLE DRIVER AND PASSENGER CAPTAIN CHAIRS

Precisely customize your cockpit sets for the best view with driver chair with reclining back, swivel and 6-way power controls comes standard. Passenger chair with manual footrest, reclining back and swivel. Swivel the chairs around for extra livingroom seating and set up the pedestal table.



AUTOMOTIVE STYLE DASH

All-new electronic instrument panel and modern, low profile with the new design of the cockpit, dash and front end allowing for easy visibility. Vacationer includes a three-camera backup system with a 6.25-inch monitor allowing you to drive in confidence when you can see from all angles. Sony® stereo and 6 1/2" speakers are standard. Garmin® Collision Mitigation is a great upgrade for total driving confidence.

CHASSIS

MODEL	33C	35K	35P	36F
Wheelbase (inches)	208"	228"	252"	242"
Front GAWR (lbs)	8,000	8,000	9,000	9,000
Rear GAWR (lbs)	15,000	15,000	15,500	17,500
GCWR (lbs)	26,000	26,000	30,000	30,000
GVWR (lbs)	22,000	22,000	24,000	26,000
Hitch Rating Weight (lbs)	5,000	5,000	5,000	8,000
Tongue Weight (lbs)	500	500	500	800
Fuel Capacity (lbs)	80	80	80	80

DIMENSIONS & CAPACITIES

MODEL	33C	35K	35P	36F
Overall Length (inches)	34' 3"	36' 3"	36' 3"	38' 9"
Overall Height (inches with A/C)	12' 10"	12' 10"	12' 10"	12' 10"
Overall Width (inches maximum)	102"	102"	102"	102"
Interior Height (inches maximum)	84"	84"	84"	84"
Interior Width (inches maximum)	96"	96"	96"	96"
Patio Awning Width (feet & inches)	17' 0"	17' 0"	14' 0"	17' 0"
Interior Storage (cu. ft.)	123	126	144	171
Exterior Storage (cu. ft.)	160	180	138	170
Fresh Water Holding Tank (gal)	100	100	100	100
Grey Water Holding Tank (gal)	58	58	46	45
Black Water Holding Tank (gal)	42	42	30	50
Appliance Propane Tank (gal) (WC)	25	25	25	25
Water Heater Tank (gal)	10	10	10	Tankless



FORD® CHASSIS

Model: Ford®



Engine: 7.3L Triton V8

Transmission: Ford® 6-Speed, Automatic w/Overdrive

Torque: 468 lb.-ft. @ 3,000 RPM

Horsepower: 350HP @ 3,900 RPM

DISCLAIMER

1. GVWR (Gross Vehicle Weight Rating) is the maximum permissible weight of this fully loaded motorhome. The GVWR is equal to or greater than the sum of the (UVW) unloaded vehicle weight plus the (OCCC) occupant cargo-carrying capacity*.
2. GAWR (Gross Axle Weight Rating) is the maximum permissible loaded weight a specific axle is designed to carry.
3. GCWR (Gross Combined Weight Rating) is the value specified by the motorhome manufacturer as the maximum allowable loaded weight of this motorhome with its towed vehicle. Towing and braking capacities may be different. Refer to Holiday Rambler and chassis manufacturer's manuals for complete information.
4. Length measured from front bumper to rear bumper (excludes accessories).
5. Excludes safety equipment and awnings.
6. Motorhomes feature a body width over 96" which will restrict your access to certain roads. Before purchasing, you should research any state and/or province road laws which may affect your usage.
7. Tank manufacturer's listed water capacity (WC). Actual propane capacity is 80% of water listing as required by the safety code.

* UVW and OCCC are found on the label containing the federal certification tag in each RV.

† The Minimum Towable Load of this vehicle is the available weight capacity, up to GCWR, when the coach is fully loaded to maximum GVWR. However, if the coach is loaded to something less than maximum GVWR, that extra available weight capacity can be added to your Towable Load. For example, if your coach is loaded to 1000lbs less than maximum GVWR, your Towable Load increases accordingly. Do not exceed the hitch rating weight, GVWR or GCWR.

***All 2021 REV Recreation Group motorhomes include a limited one-year/15,000-mile coach warranty and three-year/45,000-mile structural warranty, whichever occurs first, and is fully transferable for the first 12 months.



YOUR LOCAL DEALER



About REV Group, Inc.

REV GROUP

REV Group® (REVG) is a leading designer, manufacturer, and distributor of specialty vehicles and related aftermarket parts and services. We serve a diversified customer base, primarily in the United States, through three segments: Fire & Emergency, Commercial, and Recreation. We provide customized vehicle solutions for applications, including essential needs for public services (ambulances, fire apparatus, school buses, and transit buses), commercial infrastructure (terminal trucks and industrial sweepers) and consumer leisure (recreational vehicles). Our diverse portfolio is made up of well-established principal vehicle brands, including many of the most recognizable names within their industry. Several of our brands pioneered their specialty vehicle product categories and date back more than 50 years. REV Group trades on the NYSE under the symbol REVG. Investors-REVG

IMPORTANT—PLEASE READ: Product information, photography and illustrations included in this publication were as accurate as possible at the time of printing. For further product information and changes, please visit our website at www.holidayrambler.com or contact your local Holiday Rambler dealer. Prices, materials, design and specifications are subject to change without notice. All weights, fuel, liquid capacities and dimensions are approximate. Holiday Rambler has designed its recreational vehicles to provide a variety of uses for its customers. Each vehicle features optimal seating, sleeping, storage and fluid capacities. The user is responsible for selecting the proper combination of loads (i.e., occupants, equipment, fluids, cargo, etc.) to ensure that the vehicle's capacities are not exceeded.

holidayrambler.com



©2020 REV Group, Inc. Printed in the USA. 11/20. Model Year 2021, First Edition.

Part #: L93-0027-21



OUR VERY OWN HOLIDAY RAMBLER MOTORHOME SERVICE CENTERS

At Holiday Rambler, we strive to deliver peace-of-mind at every turn. Our devotion to customer service starts with our trusted dealer network and spans to our own staff of motorhome service professionals at REV Recreation Group's regional technical centers. The motorhome service centers are strategically located throughout the United States to provide you convenient service wherever the road takes you.

Below, you'll find the closest motorhome service center, as well as a list of the other centers. Please visit www.holidayrambler.com/motorhome-service-centers to schedule a Service Appointment.

East Coast

REV RV Service & Repair
800-509-3417

West Coast

REV RV Service & Repair
877-466-6226

ROADSIDE ASSISTANCE. ANYWHERE. ANYTIME.

24/7 CUSTOMER SUPPORT FOR:

- FUEL
- TOWING
- BATTERY
- SLIDE-OUT ISSUES
- LOCKSMITH
- AND MUCH MORE!

1-855-268-0414



One-year of REV Assist is free with the purchase of any new 2021 Holiday Rambler. You may extend your coverage after the first year at www.revgroup.com/rev-assist.