



**VANLEIGH**  
A DIVISION OF TIFFIN

**BEACON**

2021





## A HIGHWAY SHOULD BE SO LUCKY

All fifth-wheels are towed. But few pull heartstrings like Vanleigh's flagship Beacon models. Those fortunate enough to own one rave about its luxurious appointments inside and out. From its full body paint and solid construction, to its handcrafted cabinetry and spacious room for all the amenities, the Beacon truly shines as America's most upscale choice for traveling in style.





## BUILT AROUND YOU®

We understand that you have many options to consider when purchasing a new RV and we thank you for taking the time to consider ours. The Vanleigh team gets to work well before dawn every morning with one goal in mind, to create the best built product in the marketplace. We believe in building a product that we would want to RV in, whether it's for a weekend getaway or a yearlong hiatus. That's why every Vanleigh RV is made knowing that our customer's journey is their home.

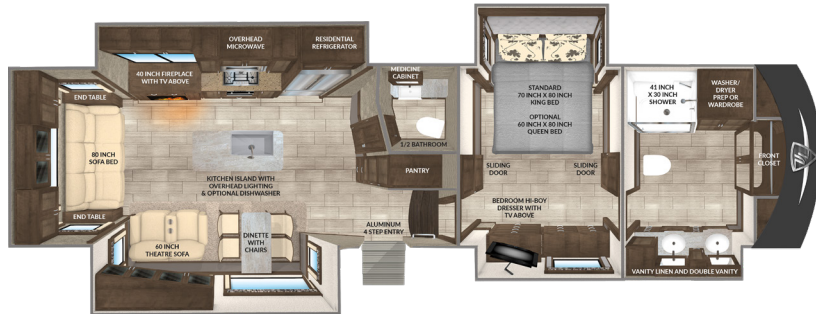




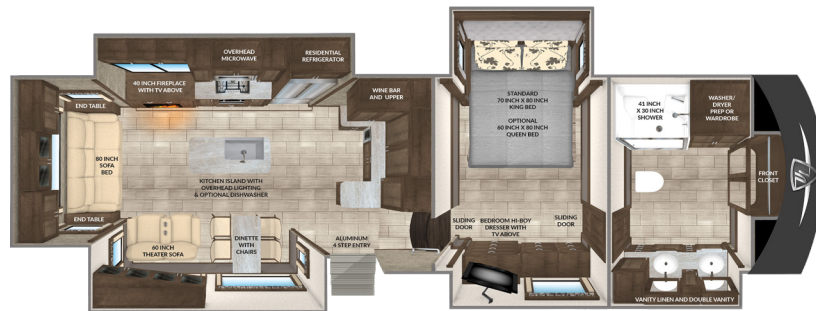
# BEACON



Length: 34'8" Hitch Weight: 2,600 Dry Weight: 13,020 GVWR: 18,000



Length: 39' Hitch Weight: 3,100 Dry Weight: 14,700 GVWR: 18,000



Length: 39' Hitch Weight: 3,100 Dry Weight: 14,600 GVWR: 18,000

**34RLB**

REAR LIVING BEACON

**39FBB**

FRONT BATH BEACON

**39GBB**

GRAND BAR BEACON





Length: 42' 6" Hitch Weight: 3,300 Dry Weight: 16,400 GVWR: 18,500

## 41FLB FRONT LIVING BEACON



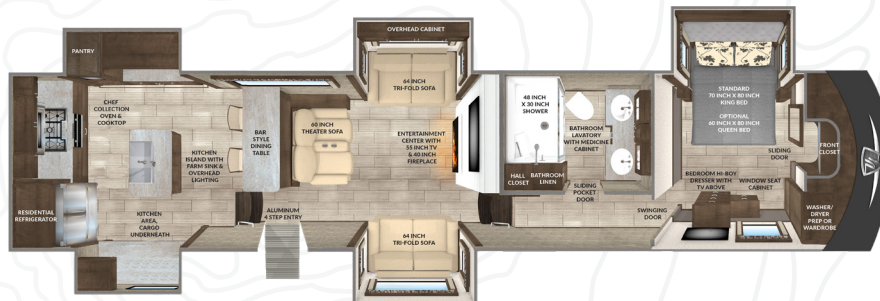
Length: 42' 6" Hitch Weight: 3,500 Dry Weight: 15,400 GVWR: 18,500

## 42RDB REAR DEN BEACON



Length: 42' 6" Hitch Weight: 3,300 Dry Weight: 15,000 GVWR: 18,500

## 41LKB LIVING KITCHEN BEACON



Length: 42' 6" Hitch Weight: 3,200 Dry Weight: 15,400 GVWR: 18,500

## 42RKB REAR KITCHEN BEACON



## 41FLB



Shown in English Chestnut

The 41 Front Living Beacon makes entertaining family or friends comfortable and convenient. With the large front living area and an additional bathroom between the Bedroom Suite and the Kitchen, you can easily entertain with all the comforts of home!

## SPECIFICATIONS

GVWR 18,500

Dry Weight 16,400 \*

Cargo Carrying 2,100

Hitch Weight 3,300 \*\*\*\*

Width 101"

Height 13'1" \*\*

Length 42'6" \*\*\*

Fresh Water Cap. 70 gal

Grey Water Cap. 90 gal

Black Water Cap. 45 gal

Water Heater 10 gal

Furnace 42K BTU

LP Cap. 60 lbs

- \* unloaded and based off of an average
- \*\* to top of A/Cs
- \*\*\* from pinbox to rear ladder based on standard build, no options
- \*\*\*\* unloaded and based off of an average











41 LKB

## SPECIFICATIONS

GVWR 18,500

Dry Weight 15,000 \*

Cargo Carrying 3,500

Hitch Weight 3,300 \*\*\*\*

Width 101"

Height 13'1" \*\*

Length 42'6"\*\*\*

Fresh Water Cap. 70 gal

Grey Water Cap. 90 gal

Black Water Cap. 45 gal

Water Heater 10 gal

Furnace 42K BTU

LP Cap. 60 lbs



\* unloaded and based off of an average

\*\* to top of A/Cs

\*\*\* from pinbox to rear  
ladder based on standard  
build, no options

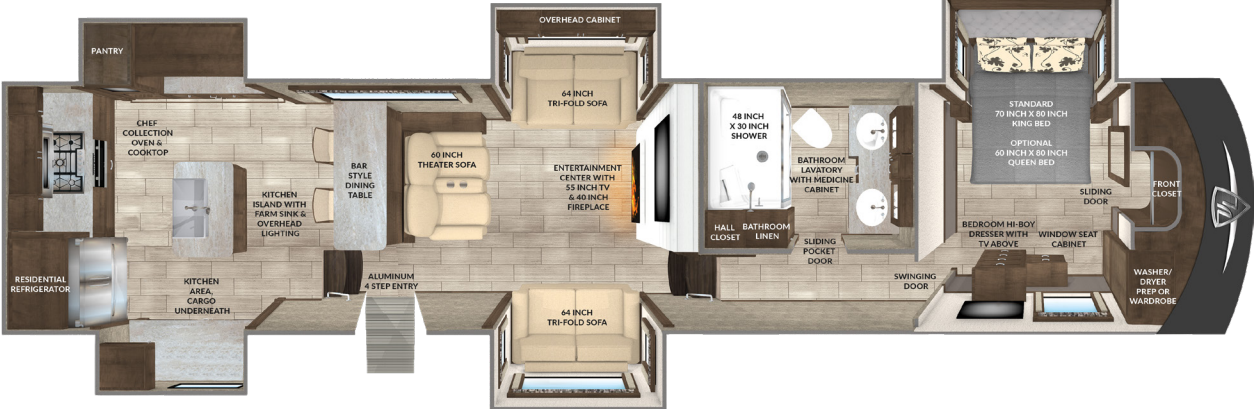
The all new 41 Living Kitchen Beacon takes living space to a whole new level. You'll feel right at home in this Beacon, which offers one full bathroom and a half bathroom, plenty of storage and counterspace in the kitchen. You'll feel like you have endless space to stretch your legs out during a long trip. We've also added additional cabinet space to the living galley, a fireplace to the bedroom suite and a half bath to accommodate whomever you happen to be entertaining.



Shown in Amber Glaze



42RKB



Shown in Mocha

The 42 Rear Kitchen Beacon maximizes available living space in a way that gives all the comforts of home in an innovative new floorplan. From the elevated rear Kitchen with generous counterspace to the comfortable Living Area and Bedroom Suite, this Beacon makes it look easy.

## SPECIFICATIONS

GVWR 18,500

Dry Weight 15,400 \*

Cargo Carrying 3,100

Hitch Weight 3,200

Width 101"

Height 13'1" \*\*

Length 42'6" \*\*\*

Fresh Water Cap. 70 gal

Grey Water Cap. 90 gal

Black Water Cap. 45 gal

Water Heater 10 gal

Furnace 42K BTU

LP Cap. 60 lbs

- \* unloaded and based off of an average
- \*\* to top of A/Cs
- \*\*\* from pinbox to rear ladder based on standard build, no options
- \*\*\*\* unloaded and based off of an average







## 34RLB



Shown in White Linen

## 39FBB



Shown in English Chestnut



## 39GBB



Shown in Amber Glaze

## 42RDB



Shown in White Linen





### LIVING AREA

- Full Profile Ceiling Throughout
- Hardwood Cabinetry and Faceframes
- Hardwood Slide-Out Fascia Throughout
- Hardwood Window Valances
- 8'0" Main Floor Slide-Out Boxes
- Spyder Multiplex Wiring System w/ Digital Home Screen
- Soft Touch Vinyl Ceiling
- Recessed LED Ceiling Lighting
- Roller Shades (Day & Night)
- Diming Function on Main Living and Bedroom Area Lighting
- High Quality Residential Franklin Furniture, Made in the U.S.A.
- Ceiling Fan
- Dirt Devil Central Vacuum System

### KITCHEN

- Solid Surface Countertops
- Stainless Steel Full Basin Farm Sink
- Residential Kitchen Faucet with Pull Down Sprayer
- Stainless Steel Convection Microwave
- Insignia Residential Style Oven
- LG Residential Refrigerator w/ Ice & Water in Door (Wi-Fi Enabled)
- 1,000 Watt Pure Sine Wave Inverter (N/A on Gas/Elec. Fridge)
- Soft Close Doors and Drawers
- Freestanding, Solid Surface Dinette Table with 4 Chairs
- Automatic Ceiling Vent Fan in Galley
- Hardwood Ceiling Décor Package with Recessed LED Lighting
- Hand Laid Tile and Grout Backsplashes

### HOME ENTERTAINMENT

- LG Smart TV
- Sound Bar with Surround Sound in Living Area
- Entertainment Center with Bluetooth, DVD, Aux. Controls.
- Dual Exterior Speakers
- Prewire for Solar Panels
- Winegard Air 360+ Antenna

### BEDROOM

- LG Smart TV
- Dual USB Ports in Nightstands
- 70" x 80" Memory Foam King Mattress
- Hardwood Window Valances
- Solid Vinyl Flooring Throughout Bedroom
- Residential Hardwood Headboard
- Hardwood Dresser
- Full Sized Wardrobe with Motion Sensor Lighting
- Full Sized Storage Area Under Bed

### HEATING AND COOLING

- Dual 15,000 BTU Air Conditioners
- Prewire for Third 15,000 BTU A/C with Triple Zone Thermostat
- Heat Pump on One A/C (Location Varies by Floor Plan)
- 16" Wide Return A/C Ducts for Max Airflow
- 42,000 BTU Furnace
- 7,200 BTU Electric Fireplace
- R-45 Floor and Roof Insulation
- Whisper Quiet A/C System
- Fully Enclosed and Heated Underbelly with Heat Return
- 12V Electric Tank Heaters
- 10 Gallon Gas/Electric Quick Recovery Hot Water Heater
- Dual Pane Windows

### EXTERIOR AND CONSTRUCTION

- 20 Mil Gel Coat Fiberglass
- Tubular Aluminum Framed Sidewalls
- 16" on Center Tubular Aluminum Flooring
- 16" on Center Aluminum Roof Joists
- 5-Sided Framed, Laminated, and Insulated Slide Boxes
- Aluminum A/C Boxes Welded to Frame
- Roof Backer for All Crown Molding
- Powder Coated Aluminum Wet Bay w/ Laser Etched Labeling
- 12V Electric Dump Valves for Black and Grey Tanks w/ Manual Override
- Dual Copper Water Manifolds
- Labeled Wire Harnesses
- Protective Wire Looms
- LED Exterior Lighting System

- Prewire for Backup Camera
- Slam-Latch Baggage Doors
- Motion Sensor Lighting in Pass-Through Compartment
- Electric Power Cord Reel
- Prewire for Traveler Satellite
- 8K Axles w/ Drum Brakes
- Westlake "H" Rated Tires
- Generator Prep
- Two Patio Awnings on Slide Boxes

### OPTIONAL EQUIPMENT

- CPAP Stand
- Bar Style Dinette Table – STD 42RKB
- Booth Dinette
- 4 Door Gas/Electric RV Fridge
- Hardwood Refrigerator Doors (N/A 42RKB)
- Dishwasher (N/A 42RDB & 41FLB)
- Splendide Front Load Washer & Dryer
- 60" x 80" Memory Foam Queen Mattress
- 8K Axles w/ Disc Brakes
- Goodyear "H" Rated Tires
- 5.5 Onan Marquis Gold LP Generator w/ Prep
- Truma "On-Demand" Water Heater
- 3rd 15,000 BTU A/C
- Additional Heat Pumps (Per A/C)
- Slide Awning Package
- 32" Outdoor TV (N/A with Booth Dinette Option & N/A 42RKB)
- Surge Guard
- Solar Prep
- 2" Receiver Hitch

Some interior furnishings not included. Some photos shown in literature have optional equipment. All options may not be available in every model. Because of progressive improvements, specifications, standard and optional equipment are subject to change without notice or obligation. For a complete and up-to-date list of available options and specifications, as well as VanLeigh's full line of RVs, visit [vanleighrv.com](http://vanleighrv.com).



---

WOOD FINISH/STAINS

---



Mocha



Amber Glaze



English Chestnut



White Linen

---

EXTERIOR PAINT FINISH

---



Crimson



Silver Sand



Sunlit Sand



Waterfall



Fire Opal



Smokey Teal



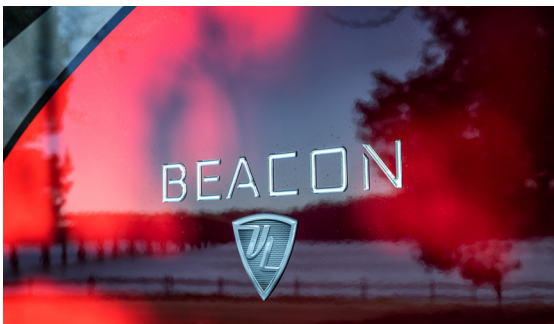
Nasa



Frosted Granite



White Mahogany







## ALL WARRANTIES ARE NOT CREATED EQUAL.



See why ours stand the test. At Vanleigh, building a quality coach is our primary focus. Our warranty reflects our confidence in the construction of our unit. From the beginning phases of production we have pressurized water on our units. Throughout our production process we run systems checks on every component in the RV. Once your RV is completed it is taken outside to our onsite campground where it is hooked up to full services and put through an additional PDI inspection. We are proud to offer this accountability to our customers along with the following basic limited warranties:

### 3 YEAR CONSTRUCTION WARRANTY:

The structure of the welded frame of the RV is warranted for 3 years (36 months)

### 1 YEAR BASE LIMITED WARRANTY:

Your coach has a limited warranty against defects in materials and workmanship for 12 months of ownership

### ONGOING OWNER SUPPORT

Vanleigh is proud to offer exceptional customer support. E-mail us at [customercare@vanleighrv.com](mailto:customercare@vanleighrv.com) or call us at **662.331.2933**. We build our units with tested and proven components. Many of these components carry their own respective warranties. Please see owner's manual for the warranties of components.

## BUILT AROUND YOU

We've always prided ourselves in putting our owners first. To build the best product and service it, with the same quality and care. It's at the core of who we are. We appreciate your consideration of Vanleigh.



# VANLEIGH

A DIVISION OF TIFFIN

26 Industrial Drive | Burnsville, MS 38833  
Phone 662-612-4040 | Fax 662-655-0913  
[www.vanleighrv.com](http://www.vanleighrv.com)

YOUR LOCAL VANLEIGH RV DEALER: