

Customizable comfort
for the perfect fit.



SPIRIT

QUALITY INNOVATION SERVICE

WINNEBAGO



On the Cover: Suede Full-Body Paint
Interior: 31K Lennon with Charcoal with Driftwood Cabinetry



The comfortable U-shaped dinette (NA 25B) accommodates a crowd, and converts to a comfortable bed for added sleeping capacity.



Available Theater Seating (26T, 31H, 31K) features individually operated recliners and footrests, and provides optimal viewing for the 32" HDTV.



The Spirit's huge exterior trunk compartment means you can bring along larger items with ease.

Family-Friendly Adventure To Go.

Long a favorite with families of all kinds, the Winnebago® Spirit® returns with a new 26T floorplan, an upgraded chassis and new features to make your RVing adventures better than ever.

Six floorplans, from 23'10" to 32'9", provide a variety of layouts, sleeping accommodations and storage configurations. Built on the proven Ford® E-350/E-450 chassis, the Spirit is now powered by a 7.3L V-8 producing 350 horsepower and 468 lb.-ft. of torque. A new standard second coach battery and 1,000-watt inverter provide extra power in camp.



The heart of every Spirit is its comfortable, multi-use lounge. A large U-shaped dinette (except 25B) is ideal for dining, games, working, or taking in a movie on the 32" HDTV. On the 31K, our available TrueComfort+™ sofa/bed opens to a double bed (58" x 74") for superb sleeping, while serious movie buffs will opt for the available theater seating (26T, 31H, 31K) with individually operated recliners and footrests. The Spirit's large tinted windows offer great visibility in camp and on the road, and the standard blackout roller shades provide privacy when you want it.



Sofa/bed



U-shaped dinette

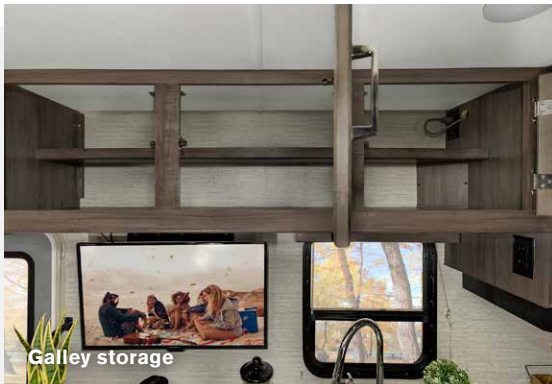


Multi-use lounge

WINNEBAGO
SPIRIT / Galley



A big advantage of RV travel is the ability to cook your own meals, and the well-designed, well-equipped Spirit galley makes meal prep a treat. Corian® solid surface countertops and the stainless steel sink set an upscale tone, the double-door refrigerator/freezer keeps things cool, and the three-burner range with glass cover (N/A 22R), oven and microwave handle cooking duties.



Galley storage



Refrigerator



Three-burner range



Stainless steel sink



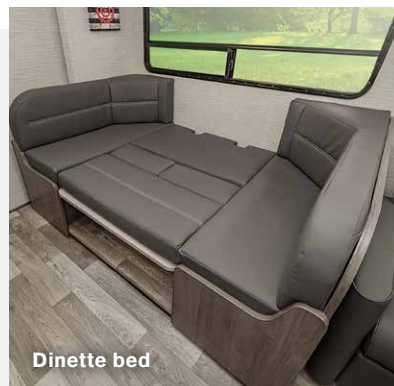
Pantry drawers



Your Spirit provides comfortable sleeping quarters for all at the end of the day. The large (57" x 95") cabover bunk is always a favorite, while the dinette and sofa/bed (N/A 22M, 22R) provide added sleeping capacity. Got a full house? With its included bunk beds, the 31H sleeps eight! Each Spirit floorplan features a rear bedroom with a comfy double or queen bed, wardrobe, and your own 24" HDTV. Each floorplan includes a large bath with shower and flexible showerhead, powered roof vent, lavatory and medicine cabinets, skylight, towel bar(s) and robe hook(s).



Cabover bunk



Dinette bed



Bathroom



Shower with skylight



Vanity



Drivers will feel right at home in the Spirit cab. The exceptional cab view is supplemented by side mirrors with defrost and video cameras, and the oversized 8.95" anti-glare touchscreen makes everything easy to see at a glance. Additional standard safety features include Ford's Electronic Stability Control, which can apply selective braking automatically to prevent sliding sideways or skidding; Hill Start Assist, which helps prevent backward rolling while you transition from brake to accelerator; and Traction Control, which keeps wheels from excessively spinning in order to maintain traction.

Winnebago is the only conventional Class C manufacturer to offer the NEW Smart Driver-Assist Technology Package. These features, including Automatic Emergency Braking, Lane Departure Warning, and Adaptive Cruise Control, coupled with the standard safety features, help ensure that you and your family can safely cruise to your next destination.



Cab seats



Radio/rearview monitor system



Cab privacy curtains



Deciding between the two attractive graphics packages and two full-body paint options might be tough, but kicking back in camp is easy. A push of a button deploys or retracts the powered patio awning with LED lighting, and the large lighted trunk means no more fumbling around in the dark for your gear. Open the screened door, let the breeze in, and let your Spirit shine.



Awning lights



Entrance door

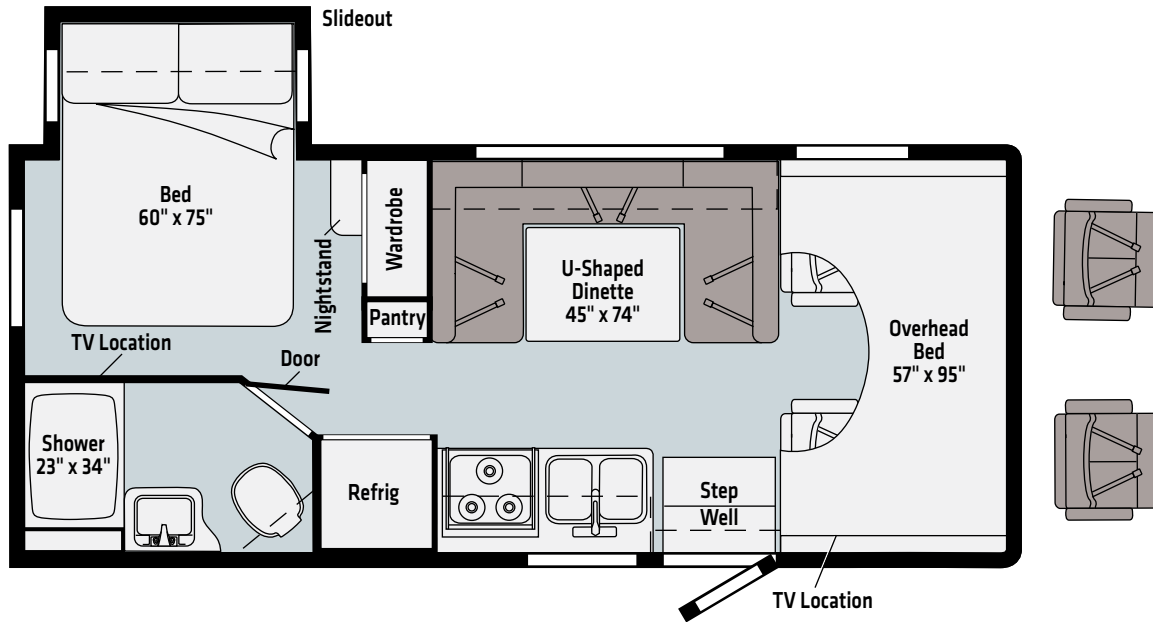


Exterior rear storage



Stainless steel wheel liners

22M

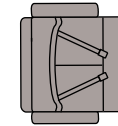
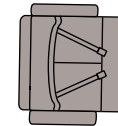
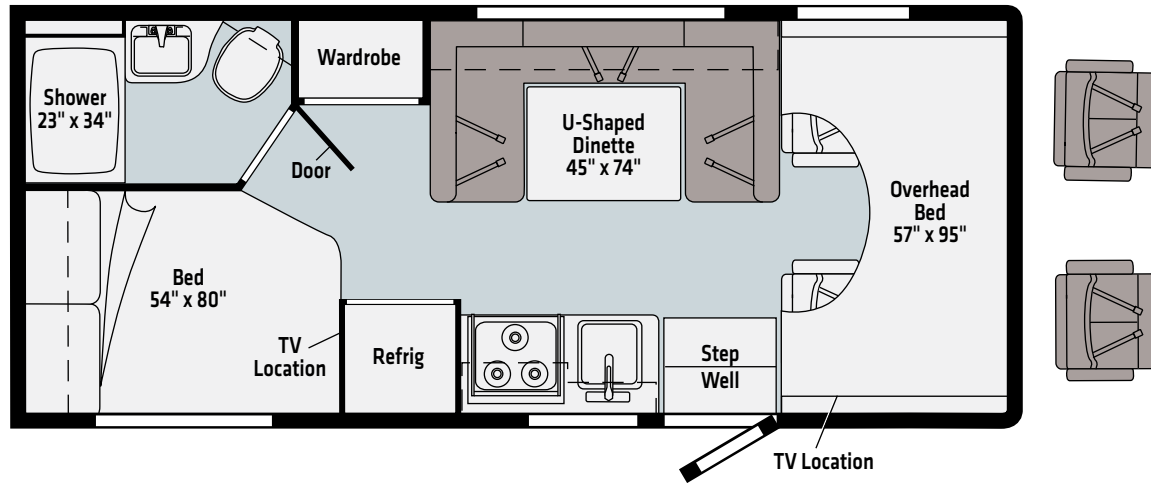


Ultrafabrics
UF2 Premium
Leatherette

Vinyl

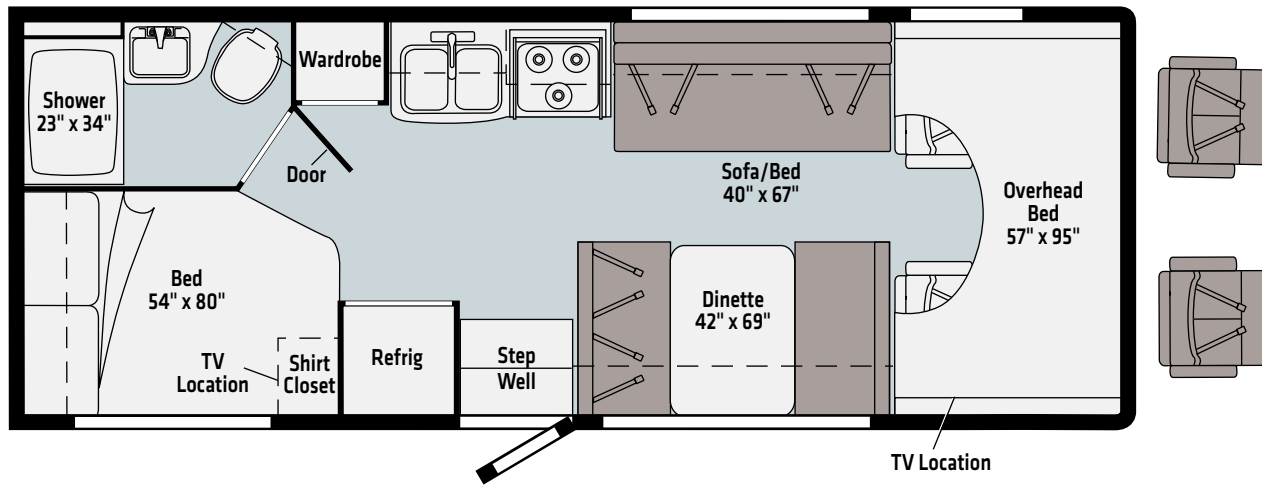
Dashed lines denote overhead storage areas. Floorplans and specifications are also available online at Winnebago.com

22R



Dashed lines denote overhead storage areas. Floorplans and specifications are also available online at Winnebago.com

25B



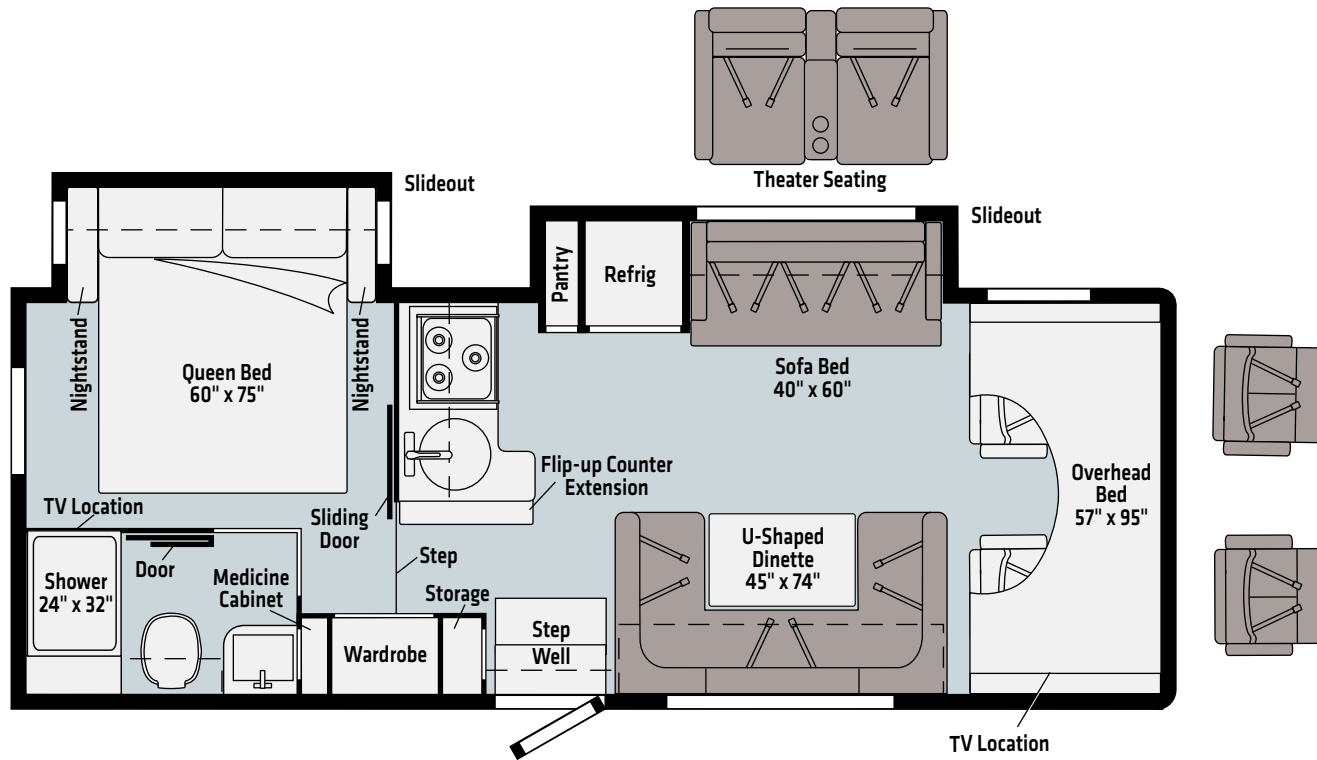
Ultrafabrics
UF2 Premium
Leatherette

Vinyl

Dashed lines denote overhead storage areas. Floorplans and specifications are also available online at Winnebago.com



NEW
26T



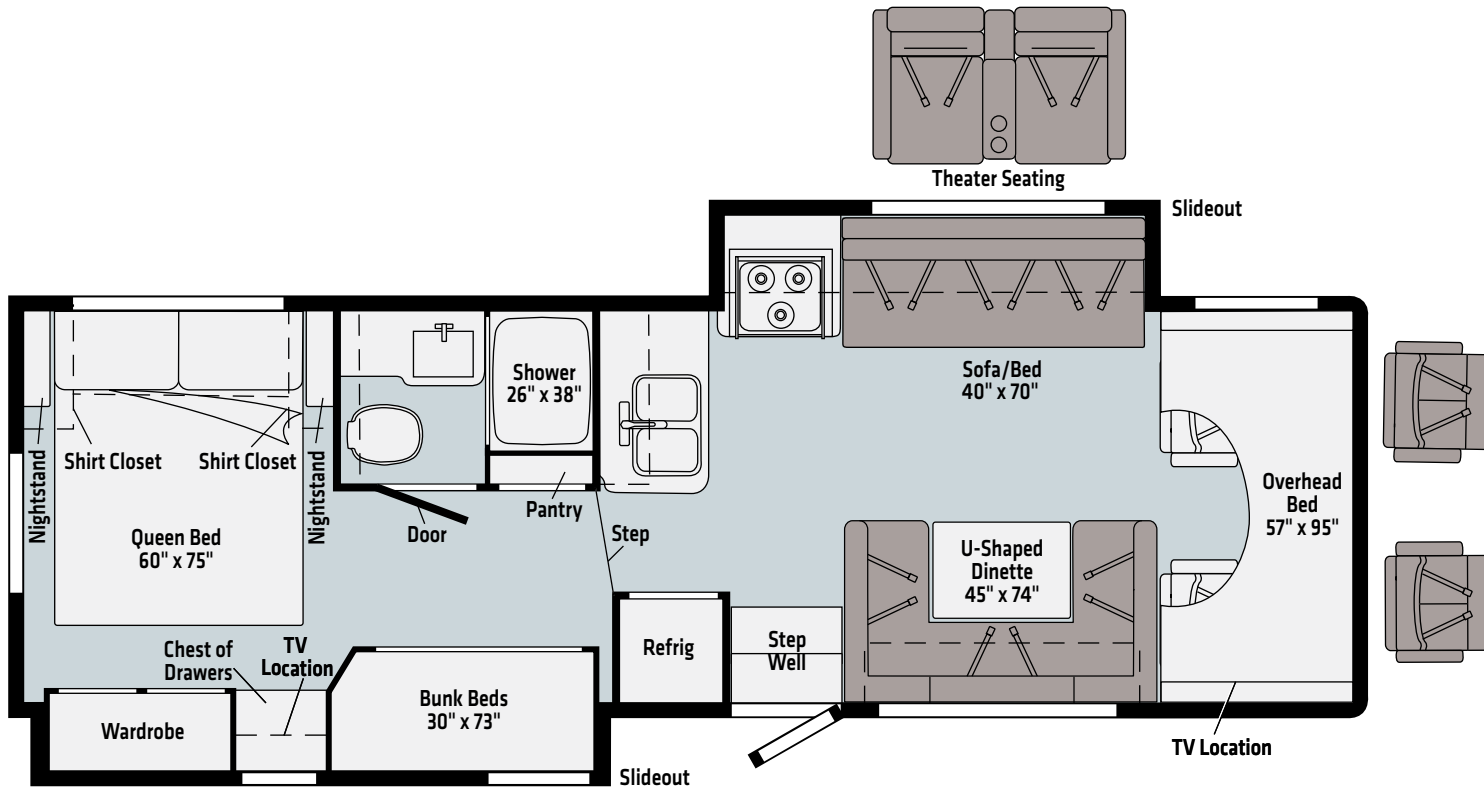
Ultrafabrics
UF2 Premium
Leatherette

Vinyl

Dashed lines denote overhead storage areas. Floorplans and specifications are also available online at Winnebago.com



31H

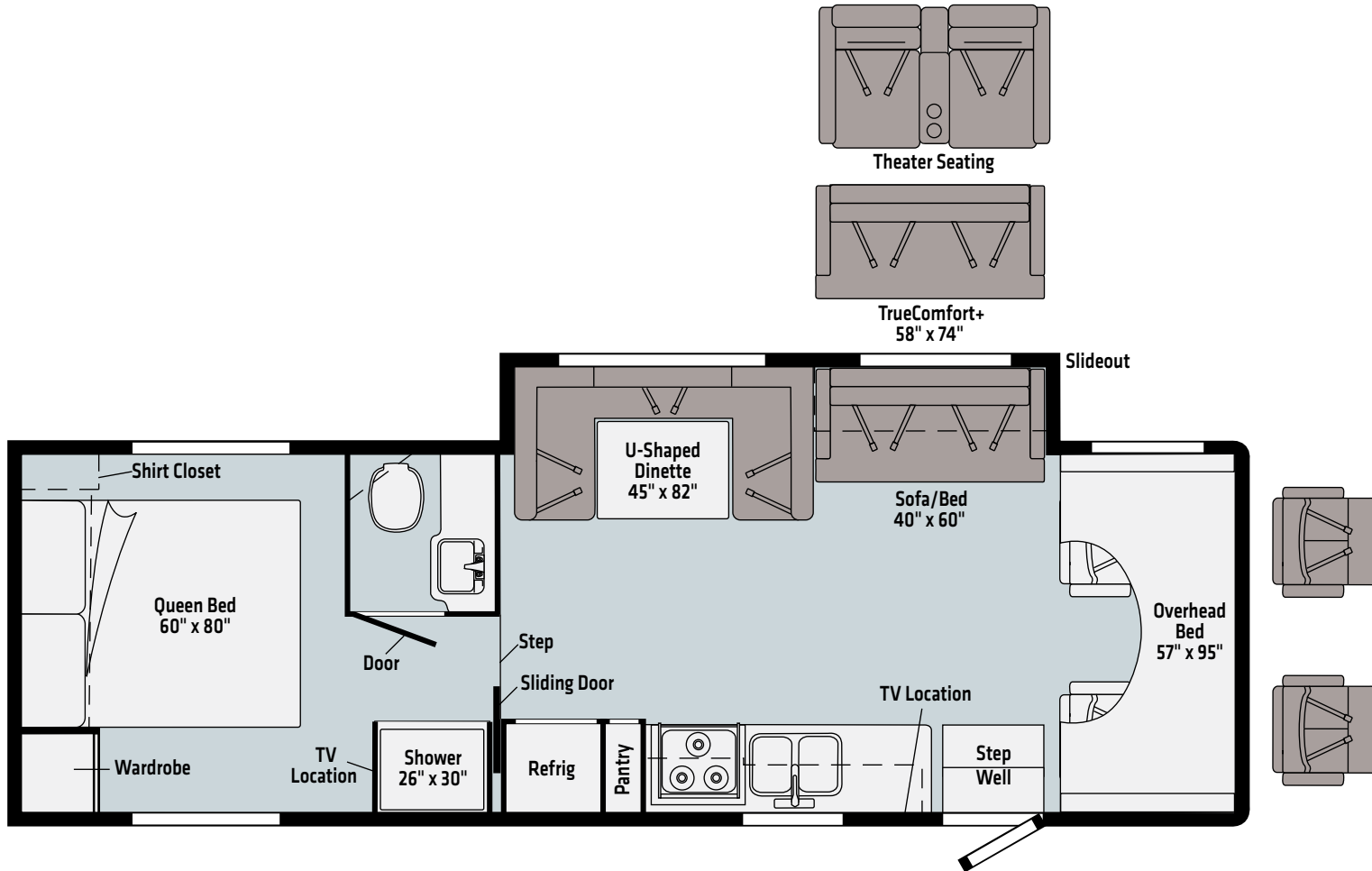


- Ultrafabrics
UF2 Premium
Leatherette
- Vinyl

Dashed lines denote overhead storage areas. Floorplans and specifications are also available online at Winnebago.com



31K



Dashed lines denote overhead storage areas. Floorplans and specifications are also available online at Winnebago.com



Catalina
DELUXE GRAPHICS



Chestnut
DELUXE GRAPHICS

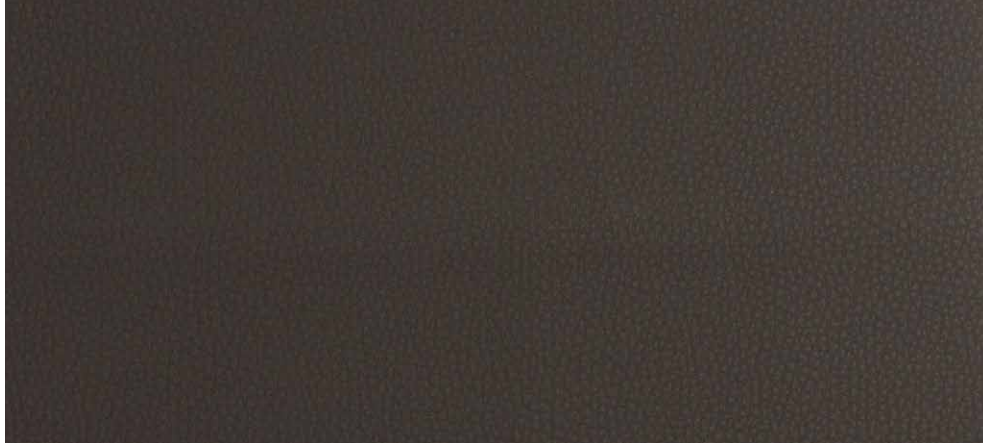


Cool Mist
FULL-BODY PAINT



Suede
FULL-BODY PAINT

Starr



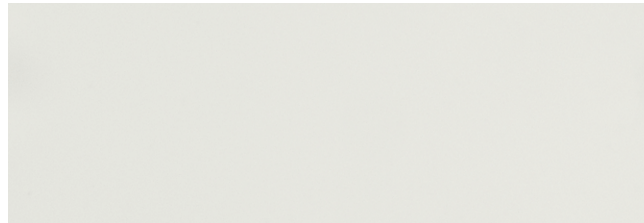
Ultrafabrics UF2 Premium Leatherette



Wall Board



Bed Cover



Countertop



Vinyl Flooring

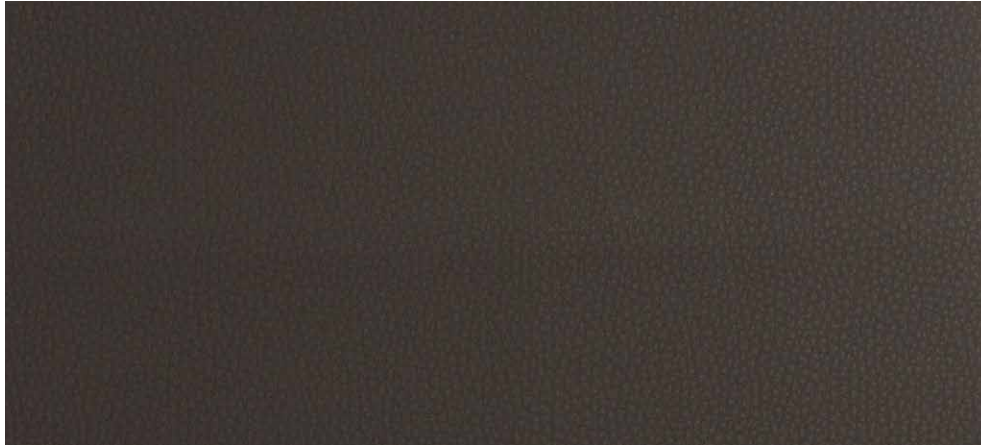
Wood



Walnut

Winnebago® reserves the right to change décor materials and specifications without notice or obligation.

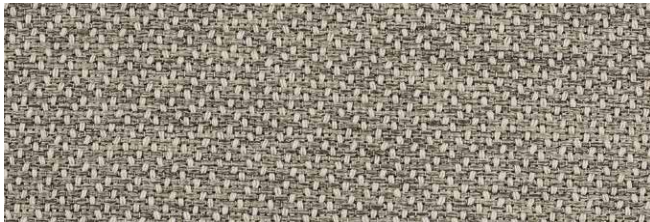
Lennon with Charcoal



Ultrafabrics UF2 Premium Leatherette



Wall Board



Bed Cover



Countertop



Vinyl Flooring

Wood



Driftwood II

Winnebago® reserves the right to change décor materials and specifications without notice or obligation.

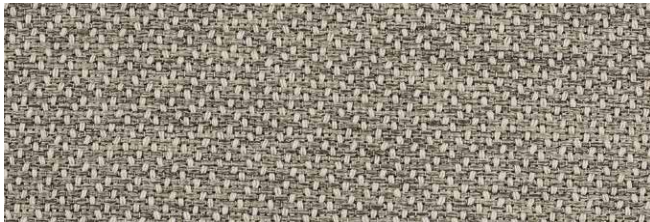
Lennon with Medium Gray



Ultrafabrics UF2 Premium Leatherette



Wall Board



Bed Cover



Countertop



Vinyl Flooring

Wood



Driftwood II

Winnebago® reserves the right to change décor materials and specifications without notice or obligation.

WEIGHTS MEASURES	22M	22R	25B	26T	31H	31K
Length	24'5"	23'10"	26'4"	28'5"	32'9"	32'9"
Exterior Height¹	10'11" ^A /11' ^B	10'11" ^A /11' ^B	11'	11'	11'	11'
Exterior Width²	8'5.5"	8'5.5"	8'5.5"	8'5.5"	8'5.5"	8'5.5"
Exterior Storage³ (cu. ft.)	44.5	60.4	73.1	45	85	108.3
Awning Length	14'	14'	17'	17'	10'4"	20'
Interior Height	6'10"/6'5.5"*	6'10"	6'10"	6'10"/6'5.5"*	6'10"/6'5.5"*	6'10"/6'5.5"*
Interior Width	8'	8'	8'	8'	8'	8'
Freshwater Tank Capacity⁴ (gal.)	40	40	40	44	44	44
Water Heater Capacity (gal.)	6	6	6	6	6	6
Holding Tank Capacity-Black/Gray⁴ (gal.)	40/45	21/24	21/26	35/41	37/34	30/30
LP Capacity⁵ (lbs.)	76.14	76.14	76.14	76.14	76.14	76.14
Fuel Capacity (gal.)	55	55	55	55	55	55
GCWR⁶ (lbs.)	18,500 ^A /22,000 ^B	18,500 ^A /22,000 ^B	22,000 ^B	22,000 ^B	22,000 ^B	22,000 ^B
GVWR (lbs.)	12,500 ^A /14,500 ^B	12,500 ^A /14,500 ^B	14,500 ^B	14,500 ^B	14,500 ^B	14,500 ^B
GAWR - Front (lbs.)	5,000	5,000	5,000	5,000	5,000	5,000
GAWR - Rear (lbs.)	8,500 ^A /9,600 ^B	8,500 ^A /9,600 ^B	9,600 ^B	9,600 ^B	9,600 ^B	9,600 ^B
Wheelbase	158"	158"	182"	190"	220"	220"

* Rear of Coach ^A Ford E350 Chassis ^B Ford E450 Chassis

Chassis

Ford® E350 Chassis 350-hp 7.3L V8 Premium Engine, TorqShift 6-speed automatic transmission w/overdrive, 210-amp. alternator (22M, 22R)

Ford E450 Chassis 350-hp 7.3L V8 Premium Engine, TorqShift 6-speed automatic transmission w/overdrive, 210-amp. alternator (25B, 26T, 31H, 31K)

4-wheel ABS

Rear auxiliary springs (26T, 31H, 31K)

Trailer hitch⁶ 7,500-lb. drawbar/500-lb. maximum vertical tongue weight

Stainless Steel wheel liners and valve extenders

OPTIONAL EQUIPMENT

Ford E450 Chassis 350-hp 7.3L V8 Premium Engine, TorqShift 6-speed automatic transmission w/overdrive, 210-amp. alternator (22M, 22R)

Hydraulic leveling jacks (front and rear) (26T, 31H, 31K)

Electric stabilizing jacks (22M, 22R, 25B)

Spare tire

Cab Conveniences

Cab seats armrests, fixed lumbar support, and multi-adjustable slide/recline

3-point seat belts

Airbags driver and passenger

12-volt powerpoint

Power steering w/tilt and cruise control

Power door locks

Sunvisors

Radio/Rearview monitor system w/integrated 8.95" multi-function touchscreen monitor and rear color camera, Bluetooth®, Apple CarPlay®, Android Auto™ and Sirius XM® ready (requires available receiver w/antenna upgrade)

Mirrors w/defrost, remote and video camera

Cab mat

Remote keyless entry

Auto headlight control

Electronic stability control

Hill start assist

Traction control

Adaptive cruise control

Automatic emergency braking

Auto high beam control

Distance alert

Driver monitoring

Forward collision warning

Lane departure warning

Post-collision braking

Tire pressure monitoring

OPTIONAL EQUIPMENT

Cab seats w/Ultrafabrics® UF2 Premium Leatherette covering

Interior

Amplified digital HDTV antenna

MCD® Roller Shades (lounge, dinette, and bedroom)

Mini blinds (galley/bath)

Systems monitor panel

Roof vent (bedroom and front bunk area)

Front wraparound curtain

Tinted windows

Vinyl ceiling

USB charger (dinette and bedroom)

LED lighting

32" HDTV w/DVD player

Vinyl flooring throughout

Sofa/bed (25B, 26T, 31H, 31K)

Assist bar

Dream dinette table mechanism (25B)

OPTIONAL EQUIPMENT

Dual-glazed, thermo-insulated windows

Sofa sleeper (31K)

Theater seating (26T, 31H, 31K)

Galley

Corian® Solid Surface Countertops

Microwave oven w/touch control

Vented range hood w/light

3-burner range w/glass cover (NA 22R), and oven

Pantry (22M, 26T, 31H, 31K)

Double-door refrigerator/freezer w/woodgrain paneling (22M, 22R, 25B)

Large double-door refrigerator/freezer w/woodgrain paneling (26T, 31H, 31K)

Single stainless steel sink (22R, 26T)

Double stainless steel sink (22M, 25B, 31H, 31K)

Flip-up counter extension (26T)

Bath

Shower 23"x 34" (22M, 22R, 25B)

Shower 24"x 32" (26T)

Shower 26"x 30" (31K)

Shower 26"x 38" (31H)

Lavatory cabinet

Medicine cabinet

Shower w/wall surround

Shower door w/textured glass (31K)

Shower door w/retractable screen (22M, 22R, 25B, 26T, 31H)

Flexible showerhead

Skylight

Powered roof vent

Toilet w/foot pedal

Tissue holder

Robe hook(s)

Towel bar(s)



Bedroom

Double bed w/foam mattress, headboard and mattress cover (22R, 25B)

Queen bed w/foam mattress, headboard, and mattress cover (22M, 26T, 31H, 31K)

Bunk beds w/covered foam mattresses, mattress covers, storage compartment, and privacy curtains (31H)

Wardrobe (22M, 22R, 25B, 26T)

24" HDTV

Exterior

Premium high-gloss fiberglass skin

Porch light w/interior switch

Running boards

Large lighted trunk storage compartment

Powered patio awning w/LED lighting

Molded front cap

Ladder

Heating & Cooling

20,000 BTU furnace (22M, 22R, 25B)

30,000 BTU furnace (26T, 31H, 31K)

15,000 BTU air conditioner

Electrical System

AC/DC load center, 55-amp. converter/charger

30-amp. power cord

TV jack and AC receptacle near entrance door

Coach battery disconnect system

**Automatic dual-battery charge control
4,000-watt Cummins Onan® Microquiet generator**

2-deep cycle, Group 24 battery

Auxiliary start circuit

AC/DC 1,000-watt inverter

Plumbing System

Pressurized city water hookup w/tank fill

On-demand water pump

6-gallon LP water heater w/electronic ignition

Heated drainage system

Holding tank flushing system (Black tank only)

Permanent-mount LP tank w/gauge

Safety

LP, smoke, and carbon monoxide detectors

Fire extinguisher

Ground fault interrupter

Child seat tether anchor

Warranty⁷

12-month/15,000-mile basic limited warranty⁸

36-month/36,000-mile limited warranty on structure⁸

10-year limited parts-and-labor warranty on roof skin⁸

FOOTNOTES

1. The height of each model is measured to the top of the tallest standard feature and is based on the curb weight of a typically equipped unit. The actual height of your vehicle may vary by several inches depending on chassis or equipment variations. Contact your dealer for further information.
2. Floorplans feature a wide-body design - over 96"! You should be aware that some states restrict access on some or all state roads to 96" in body width. You should confirm the road usage laws in the states of interest to you.
3. The load capacity of your motorhome is designated by weight, not by volume, so you cannot necessarily use all available space when loading your motorhome.
4. Capacities are based on measurements prior to tank installation. Slight capacity variations can result.
5. Capacities shown are the tank manufacturer's listed water capacity (W.C.). Actual filled propane capacity is 80% of listing due to overfilling prevention device on tank.
6. Actual towing capacity is dependent on your particular loading and towing circumstances which includes the GVWR, GAWR, and GCWR as well as adequate trailer brakes. Refer to the chassis operator's manual of your motorhome for further towing information.
7. See separate chassis warranty.
8. See your dealer for complete warranty information.

Not all items available in combination. See dealer for details.

Because features, specifications, equipment, and options may vary from those highlighted in this brochure, the buyer is responsible for confirming with the dealer the features, specifications, equipment, and options included on their specific vehicle. In addition, Winnebago's program of continuous product improvement may result in changes to vehicle specifications, equipment, model availability, and price without notice.