

# ***Pursuit***

BY COACHMEN



# THERE ARE NO SMALL THINGS WHEN IT COMES TO PURSUIT.

IN DESIGNING PURSUIT, WE TOOK CARE OF EVERY DETAIL. THE RESULT?  
AN EXPERIENCE THAT WILL SURPRISE AND DELIGHT YOU AT EVERY TURN.



Cooking in the Pursuit is a breeze, thanks to generous cabinet and countertop space. The backsplash and fixtures add a touch of style.

The outdoor entertainment system is perfect for watching the game outside while the dash includes a computer workstation with 12V, 110V, and USB outlets, perfect for when you want to stay connected.

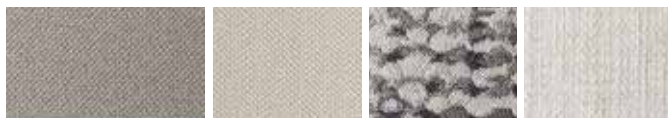


Spacious exterior storage compartments make it easy to haul extra gear without taking up space inside.

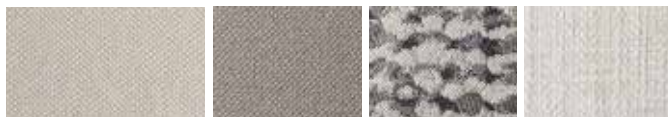
An outdoor entertainment system complete with large LED TV and integrated speakers in the awning, is the perfect way to kick back after a day exploring! (N/A 27XPS, 29XPS)

15,000 BTU A/C's keep you cool in the summer.

## INTERIOR DÉCOR COLOR SELECTIONS



Ozark



Cumberland

## INTERIOR WOOD COLOR SELECTIONS



White Velvet



Chocolate Cherry





Photography features the Pursuit 31TS floorplan.



Pursuit's spacious dream dinette provides a comfortable place to enjoy meals. The dinette converts into a bed for extra sleeping.

When done exploring the great outdoors, recline, relax and enjoy a movie on the LED TV in theater seating (31TS).

Amenities include an electric fireplace and LED TV (where applicable).

Pursuit's drop-down bunk is designed to provide an additional sleeping quarter while maximizing space when not in use.

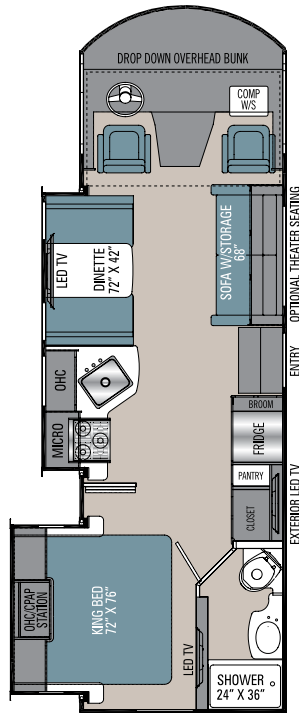


With porcelain touches, the bathroom is both tastefully designed and easy to clean.

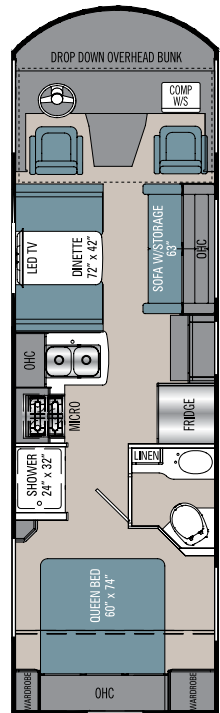
A designer headboard adds a touch of style to the comfortable bedroom, which includes a king mattress (select floorplans). Storage space has been optimized, giving you more options for long distance trips.

# FLOORPLANS

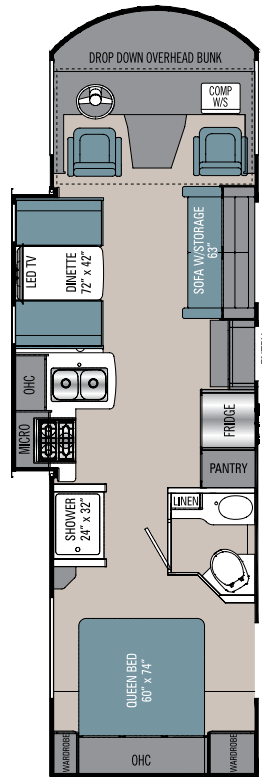
Pursuit includes six floorplan options, so you'll have no trouble choosing the one that suits you perfectly.



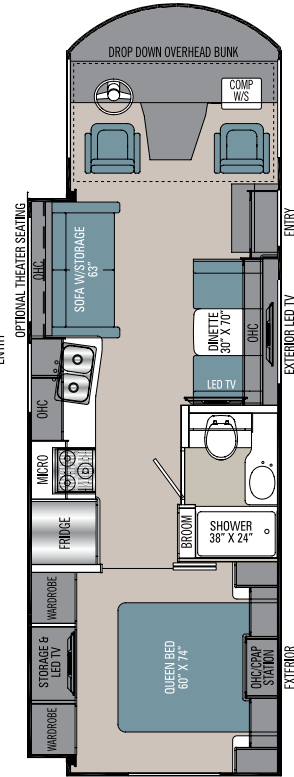
27DS



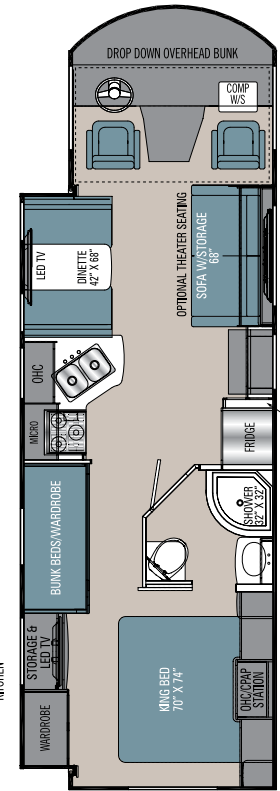
27XPS



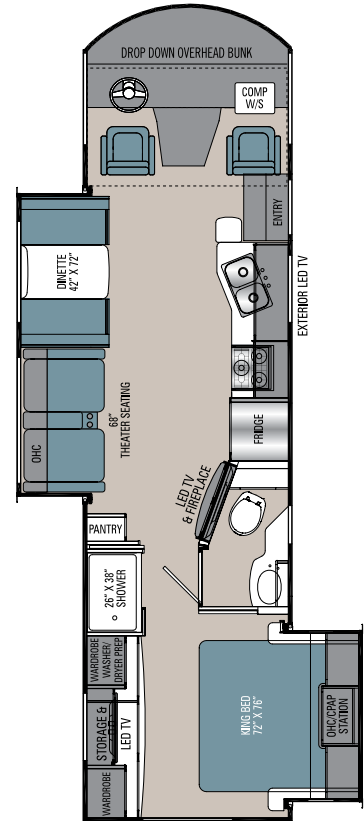
29XPS



29SS



31BH



31TS



## PURSUIT SPECIFICATIONS

CLASS A GAS	27DS	27XPS	29XPS	29SS	31BH	31TS
FORD ENGINE V-8 7.3L 3-VALVE	350 HP/468 TRQ	350 HP/468 TRQ	350 HP/468 TRQ	350 HP/468 TRQ	350 HP/468 TRQ	350 HP/468 TRQ
WHEEL BASE	178"	178"	190"	190"	190"	208"
GVWR	16,000 lbs	16,000 lbs	16,000 lbs	18,000 lbs	18,000 lbs	18,000 lbs
GCWR	23,000 lbs	23,000 lbs	23,000 lbs	23,000 lbs	23,000 lbs	23,000 lbs
GAWR FRONT	6,500 lbs	6,500 lbs	6,500 lbs	7,000 lbs	7,000 lbs	7,000 lbs
GAWR REAR	11,000 lbs	11,000 lbs	11,000 lbs	12,000 lbs	12,000 lbs	12,000 lbs
FUEL CAPACITY	80 gal	80 gal	80 gal	80 gal	80 gal	80 gal
LP GAS CAPACITY	20 gal	20 gal	20 gal	20 gal	20 gal	20 gal
FURNACE (BTUs)	30,000	30,000	30,000	30,000	30,000	30,000
EXTERIOR LENGTH (w/o Ladder)	28' 9"	29' 0"	31' 0"	30' 3"	31' 9"	33' 0"
EXTERIOR HEIGHT (w/A/C)	12'	12'	12'	12'	12'	12'
EXTERIOR WIDTH	102"	102"	102"	102"	102"	102"
FRESH WATER	50 gal	50 gal	50 gal	50 gal	50 gal	50 gal
GREY WATER	76 gal	31 gal	31 gal	35 gal	38 gal	38 gal
BLACK WATER	38 gal	31 gal	31 gal	35 gal	38 gal	38 gal
WATER HEATER	6 gal	6 gal	6 gal	6 gal	6 gal	6 gal
AWNING SIZE	20'	16'	16'	20'	20'	17'

**GVWR (Gross Vehicle Weight Rating)** is the maximum permissible weight of the unit when fully loaded. It includes all weights, inclusive of all fluids, occupants, cargo, optional equipment and accessories. For safety and product performance do NOT exceed the GVWR.

**GCWR (Gross Combined Weight Rating)** is the maximum permissible loaded weight of your motor home and any towed trailer or towed vehicle. Actual GCWR of this vehicle may be limited by the sum of the GVWR and the installed hitch receiver maximum capacity rating; see hitch rating label for detail.

**GAWR (Gross Axle Weight Rating)** is the maximum permissible weight, including cargo, fluids, optional equipment and accessories that can be safely supported by each axle.

**UVW (Unloaded Vehicle Weight) \*** is the typical weight of the unit as manufactured at the factory. It includes all weight at the unit's axle(s), including full fuel, all fluids and LP Gas. The UVW does not include cargo, fresh potable water, additional optional equipment or dealer installed accessories.

\*Estimated Average based on standard build optional equipment.

**CCC (Cargo Carrying Capacity) \*\*** is the amount of weight available for fresh potable water, cargo, passengers, additional optional equipment and accessories. CCC is equal to GVWR minus UVW. Available CCC should accommodate fresh potable water (8.3 lbs per gallon). Before filling the fresh water tank, empty the black and gray tanks to provide for more cargo capacity.

\*\* Estimated average based on standard build optional equipment

Each Coachmen motorhome is weighed at the manufacturing facility prior to shipping. A label identifying the unloaded vehicle weight of the actual unit and the cargo carrying capacity is applied to every Coachmen motorhome prior to leaving our facilities.

The load capacity of your unit is designated by weight, not by volume, so you cannot necessarily use all available space when loading your unit.

Actual towing capacity is dependent upon your particular loading and towing circumstances, which includes the GVWR, GAWR and GCWR as well as adequate trailer brakes. Please refer to the Operator's Manual of your vehicle for further towing information.

All information contained in this brochure is believed to be accurate at the time of publication. However, during the model year, it may be necessary to make revisions and Coachmen reserves the right to make all such changes without notice, including prices, colors, materials, equipment and specifications as well as the addition of new models and the discontinuance of models shown in this brochure. Therefore, please consult with your Coachmen dealer and confirm the existence of any materials, design or specifications that are material to your purchase decision. 2/21

©Copyright 2021 Coachmen RV a Division of Forest River Inc. – All Rights Reserved.

## STANDARD FEATURES

### INTERIOR APPOINTMENTS

Manual Drop-Down Front Bunk  
Self-Closing Ball Bearing Drawer Guides  
Throughout  
Thermofoil Countertops Throughout  
Premium Linoleum Throughout  
Brushed Nickel Hardware  
Radius Slider Windows with Safety Glass  
Reclining/Swivel Pilot Seats  
Sofa (27DS, 27XPS, 29XPS, 31BH)  
Theater Sofa (31TS)  
Privacy Pleated Shades Coach  
Dream Booth Dinette  
Easy Clean Cockpit floor

### INTERIOR EQUIPMENT

10" Touch Screen Radio AM/FM Radio  
with Bluetooth Apple CarPlay and  
Android Auto Link Enabled  
LP Leak Alarm and Smoke Detector  
Carbon Monoxide Detector  
Fire Extinguisher  
King Jack TV and Radio Antenna  
LED TV Coach  
Pre-Wired for Satellite Dish  
Edison Bulb Entry Light  
Charging Station for Electronic Devices

### GALLEY

Stainless Steel Range Hood with Light  
Stainless Steel Double Door Refrigerator  
12V 10 Cu. Ft.  
High Rise Kitchen Faucet  
Stainless Steel Sink  
Stainless Steel 3-Burner Range with Glass Cover  
Stainless Steel Microwave Oven  
Tile Backsplash

### BATH AND WATER

Porcelain Toilet with Foot Flush  
One Piece ABS Shower Surround  
Retractable Shower Door  
Power Bath Vent  
6-Gallon Gas/Electric D.S.I. Water Heater  
Demand Water Pump  
Skylight Over Shower  
Stainless Lavatory Sink  
Black Tank Flush

### SLEEPING

32" Bedroom TV (N/A 27XPS, 29XPS)  
CPAP Cabinet  
Upgraded Mattress

### ELECTRICAL/HEATING/AC

50-Amp Power Cord (29SS, 31TS, 31BH)  
30-Amp Power Cord (27DS, 27XPS, 29XPS)  
5.5 Onan Generator (29SS, 31TS, 31BH)  
4.0 Onan Generator (27DS, 27XPS, 29XPS)  
100W Solar Panel with Controller  
Automatic Transfer Switch  
55-Amp Converter with Distribution Panel  
GFI Circuit  
Outside Receptacle  
Emergency Start Switch  
30,000 BTU E.I. Furnace  
Dual 15,000 BTU A/C (29SS, 31TS, 31BH)  
Single 15,000 BTU A/C (27DS, 27XPS, 29XPS)  
Coach Command Center  
LED Interior Lights

### AUTOMOTIVE/EXTERIOR

Ford F53 7.3L V8 Chassis  
Tilt and Telescoping Steering Wheel  
Cruise Control  
Traction Control  
Sunload Sensor with Auto Dimming  
Dash Lighting  
Intermittent Wipers  
Dash Air Conditioning  
Computer Work Station with USB, 12V, 120V  
Automatic Leveling Jacks  
(27DS, 29SS, 31TS, 31BH)  
Back Up Monitor with Side View Cameras  
(27DS, 29SS, 31TS, 31BH)  
Back Up Monitor (27XPS, 29XPS)  
Radial Tires  
Rear Mud Flaps Only  
Power Entrance Step-Single  
Crowned, Laminated TPO Roof  
Radius Trunk Doors  
Fiberglass Front Cap  
High Gloss Dove Grey Sidewalls  
(with Azdel™ Superlite Composite)  
Dead Bolt Lock-Entrance Door  
26" Radius Entry Door  
Power Patio Awning  
8,000 Towing Hitch with 7-Way Plug  
(27XPS, 27DS, 29XPS)  
5,000 Towing Hitch with 7-Way Plug  
(29SS, 31BH, 31TS)  
Rear Mounted Roof Ladder  
Power Heated Mirrors  
Rear Bumper  
Stainless Steel Wheel Liners  
Slide-out room awning(s) (Where Applicable)  
20-Gallon LP Tank  
Valve Stem Extenders  
Outside Entertainment Center  
with TV (27DS, 29SS, 31TS, 31BH)  
Exterior Propane Hook-Up  
Exterior Blue Tooth - TV Audio Speakers  
Dual Tail Lights

## OPTIONAL FEATURES

### INTERIOR COLOR SELECTIONS

Cumberland  
Ozark

### INTERIOR WOOD COLOR SELECTIONS

White Velvet  
Chocolate Cherry

### OPTIONAL FEATURES

6-Way Power Drivers Seat (N/A 27XPS, 29XPS)  
Theater Seating (27DS, 29SS, 31BH)  
CSA Up-fit  
CD-MVSA (Canadian Motor Vehicle Safety Act)<sup>1</sup>

*Notes:*

<sup>1</sup> *Mandatory For All Canadian Provinces*



# THE COACHMEN ADVANTAGE

What is the Coachmen advantage? It's the collection of unique features offered in a Coachmen motorhome to ensure a smoother ride, a better camping experience, and a motorhome that will last for years.

## 1. NOBLE SELECT™

Protected by a three-year warranty, these sidewalls have a high-gloss gelcoat finish to prevent fading. They are also 20% lighter than wood substrate sidewalls, provide more occupant cargo carrying capacity, and offer three times the insulation against extreme climates.

## 2. AZDEL™ COMPOSITE

Most manufacturers use wood sidewalls that can expand, swell, and eventually mold. We use Azdel. It's impervious to water, won't rot or mold, and, with less than a 1% chance of delaminating, it ensures the long-term integrity of the sidewalls.

## 3. REINFORCED LAMINATION

We vacuum bond and pinch roll every sidewall, floor, and roof, then perform a pull adhesion test. Most manufacturers just do one process or the other, but by doing both we improve the strength and longevity of the sidewalls.

## 4. FOREFRONT OF TECHNOLOGY

We offer the latest in technology by pairing electronics with smart phones. A safer and larger viewing area is achieved when dual-mirroring your smart phone GPS to the 10" Axxera dash radio and backup system. Play your favorite songs from your favorite apps through our 4-channel 5000 watt bluetooth amplifier. Wi Fi Ranger will help keep you connected in more remote areas.

## 5. SIGHT RITE DASH™

Our dashes are angled 20 degrees forward. This increases the line of sight for the driver, and offers the best road visibility on the market.

## 6. EVEN COOL DUCT™

Our patented duct system evenly disperses air through the whole coach. And we use Amaco ducting instead of Styrofoam because it's antimicrobial, preventing the growth of bacteria and ensuring a cool, clean coach in even scorching heat.

## 7. DIGITAL OWNER'S MANUAL

Our owner's manuals are easy to access through the Coachmen website or our free app. Supplemented with videos, PowerPoints, and more, it's got all you need to know about your coach.



SCAN HERE

To see available  
Standards, Options  
and Features!



Coachmen RV, a Division of Forest River, Inc.,  
A Berkshire Hathaway Company

423 N. Main St., P.O. Box 30, Middlebury, IN 46540

To learn more about Coachmen RV and our products and see how Coachmen is making the easy life easier, visit [www.coachmenrv.com](http://www.coachmenrv.com)

CUSTOMER SATISFACTION



[www.ForestRiverBuyLocal.com](http://www.ForestRiverBuyLocal.com)



<b>24/7 EMERGENCY ROADSIDE ASSISTANCE WITH VEHICLE PURCHASE*</b>	
TOWING JUMP-STARTS TIRE CHANGES FLUID DELIVERY LOCKOUT SERVICE	WINCH-OUT MOBILE MECHANIC TECHNICAL SUPPORT DEALER LOCATOR SERVICES
*VALID FOR 1 YEAR FROM DATE OF PURCHASE	



**Learn More**  
Scan this barcode using  
a QR Reader on your  
smart phone to learn  
more about Forest River.



A Berkshire Hathaway company.