

CLASS A DIESEL | MODEL YEAR 2021



# AMERICAN DREAM

39RK | 42Q | 42V | 45A



## CREATING THE INSPIRATION FOR EVERYONE ELSE.

The latest version of American Dream goes beyond your imagination. Powered by an incredible 605 horsepower engine (select floorplans), even our largest 45-foot floorplan is a joy to drive—especially since it's equipped with V-Ride and UltraSteer, and safety features like OnGuard and RoadWatch.

The list of standard features will not disappoint, including quartz countertops throughout, Roadwire® heated and cooled driver and passenger seats, Samsung black stainless appliances and exclusive Apex custom residential furniture. No matter what your expectations are, the American Dream will surpass them.

Recently added to the line-up is the new 39RK floorplan featuring our Adap-table Dinette® with a unique kitchen island. The Adap-table Dinette converts from a breakfast bar, to a desk working station area, table for two or even more, a table for four! The stylish kitchen island features an induction cooktop with polished surface top and covers. The kitchen island features pop-up receptacles for convenience and an optional dishwasher may be added. This floorplan creates an excellent hub for work and entertaining!

THE HEART OF LUXURY. THE SOUL OF FREEDOM.

# AMERICAN DREAM

## SIGNIFICANT PRODUCT FEATURES

### CHASSIS

- Freightliner® Custom Modular Chassis
- 47,000# GVWR (**NEW** 39RK, 42Q, 42V)
- 51,000# GVWR (45A)
- DriveTech / Optiview®/ Select Drive
- RoadWatch—FCCC's State-of-the Art Assisted Driving and Safety System
  - Electronic Stability Control
  - Automatic Traction Control
  - Roll Stability System
  - Pre-wire for optional OnGuard Package
- Cummins®, L9, 450HP Engine w/3 Stage Engine Brake (39RK, 42Q, 42V)
- 1250 lb/ft Torque (39RK, 42Q, 42V)
- Allison 3000 Series Transmission, 6-Speed (39RK, 42Q, 42V)
- Cummins®, X15, 605HP Engine w/3 Stage Engine Brake (45A)
- 1950 lb/ft Torque (45A)
- Allison 4000 Series Transmission, 6-Speed (45A)
- 150 Gallon Fuel Tank
- Independent Front Suspension
- Up to 60° Turning Radius
- Valid Air and HWH Hydraulic Leveling
- Michelin Tires 315/80R 22.5", All Axles
- Tire Pressure Monitoring System
- V-Ride & Ultra Steer Tag Axle
- Hitch Rating 15,000# (39RK, 42Q, 42V), 20,000# (45A)

### EXTERIOR

- Liberty Bridge
- **NEW** Upper Cap
- Full-Pass Through Exterior Storage w/LED Lighting
- Bus Style, Side Swing, Aluminum Luggage Doors w/Power Locks
- Keyless Entry (Keypad on Entry Door Handle)
- Window Awning Package
- Premium Four Color, Full Body Paint
- Exterior Entertainment Center w/50" TV, Swivel Mount & JBL® Soundbar
- 12.5kW Onan® QD, Generator w/AGS
- Aqua-Hot® 450D
- 100 Fresh, 60 Grey, 40 Black Tanks (Gallon) (42Q & 42V)
- 105 Fresh, 75 Grey, 50 Black Tanks (Gallon) (39RK, 45A)
- (3) 15K BTU Roof AC's w/ Front and Rear Heat Pumps
- Roof Mounted Electric Awning, LED Lighting, Wind Sensor Retract
- Winegard 360° OTA Antenna
- 2800 Watt Pure Sine Inverter
- **NEW** 8" Exterior Stainless Package



- Full Rear RockGARD™ w/Stainless Steel Trim
- **NEW** Stainless to the Exterior Entry Step

### INTERIOR

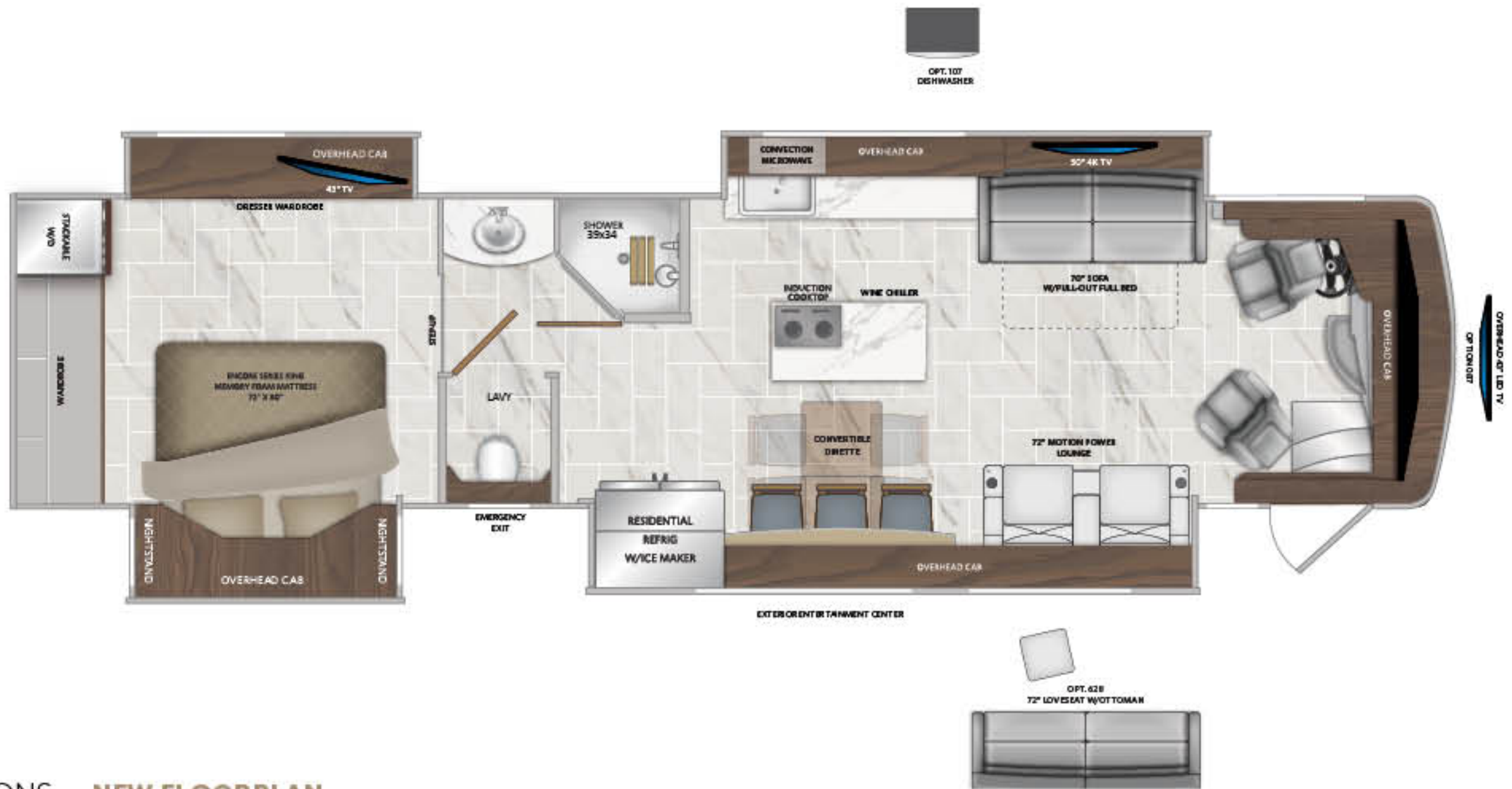
- **NEW** Ceiling Plenum Design
- Upgraded Entry Stepwell
- Power Windshield Shades and Blinds
- **NEW** Cell Charging Stations @ Dash
- Large Dual Dash Monitors
- Roadwire® Driver/Passenger Seats w/Heat and Cool Features
- **NEW** Apex Custom Residential Furniture Designs
- **NEW** Quartz Countertops Throughout
- Blanco Silgranite® Composite Galley Sink  
*Beautifully designed and scientifically proven to be scratch, stain and heat-resistant. Unsurpassed cleanability.*
- Two Burner Induction Cooktop
- Samsung® Black Stainless, 23ft<sup>3</sup>, Ice & Water in Door
- Samsung® Black Stainless Microwave Convection Oven
- Porcelain Tile w/Heat Mat Throughout
- Tile Shower w/Glass Enclosure
- Stackable Washer/Dryer
- Articulating King Bed with Custom Wolf® Mattress
- Emergency Exit Door (Standard MY21)

### OPTIONS

- **NEW** OnGuard Package
  - Pedestrian Detection
  - Adaptive Cruise Control
  - Collision Mitigation with Forward Warning and Active Braking
- Winegard In-Motion Satellite Dish
- Winegard Trav'ler w/DISH Network
- Winegard Trav'ler w/DIRECT Network
- Roof Mounted Awning (2nd Door Side)
- 43" Front Overhead LED TV
- Lithium Battery Package
- 90" Slide-Out Tray -1st Full Bay
- 90" Slide-Out Tray -2nd Full Bay
- Dishwasher
- Sofa Bed w/Mattress (42Q, 45A)
- Motion Sofa w/Power (42Q, 45A)
- Love Seat (39RK)
- **NEW** Exterior Freezer
- Technology Package (JBL® Audio System, WiFi Ranger, Cell Booster, 265W Solar Panel, Mobileye)

# AMERICAN DREAM FLOORPLANS

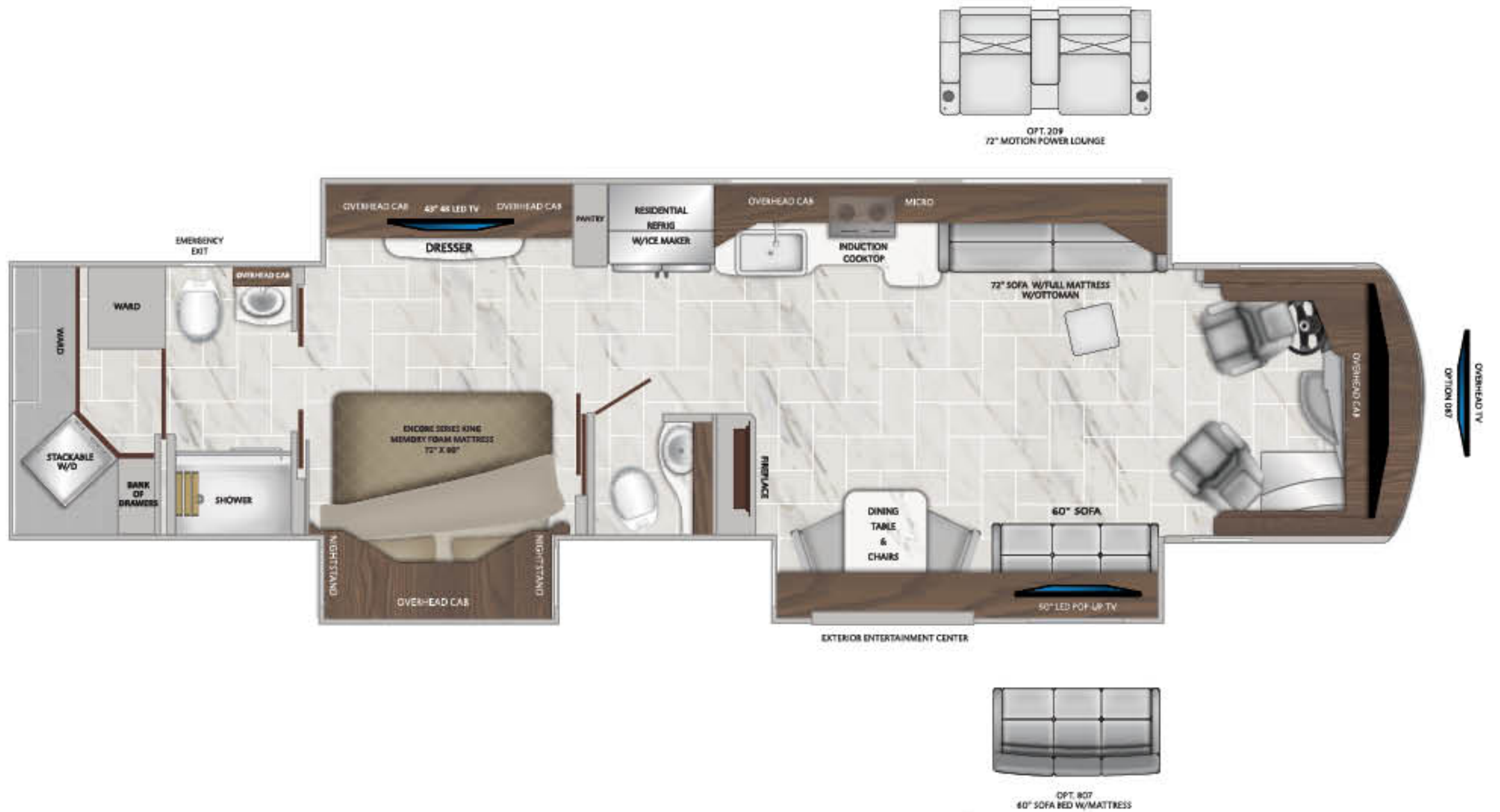
39RK



## 39RK OPTIONS — NEW FLOORPLAN

087	FRONT OVERHEAD LED 43" TV	256	ROOF MOUNT PATIO AWNING 2ND DOOR SIDE	628	LOVE SEAT
095	SATELLITE DISH WINEGARD IN-MOTION	297	LITHIUM BATTERY PACKAGE	583	ONGUARD PACKAGE — ROADWATCH (Adaptive Cruise Control, Collision Mitigation, Electronic Stability Control with Roll Stability, and Automatic Traction Control)
101	SATELLITE DISH TRAV'LER DISH NETWORK	498	DUAL EURO RECLINERS	965	1ST BAY 90° SLIDE-OUT TRAY
102	SATELLITE DISH TRAV'LER DIRECT TV	560	VIP DELIVERY	967	2ND FULL BAY 90° SLIDE-OUT TRAY
107	DISHWASHER	563	TECHNOLOGY PACKAGE (JBL® Audio System, WiFi Ranger, Cell Booster, 265W Solar Panel, Mobileye)	968	2ND FULL BAY 36"/54" SLIDE-OUT TRAY
111	EXTERIOR FREEZER				

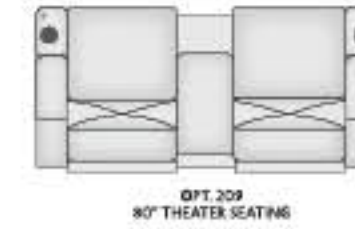
42Q



## 42Q OPTIONS

087	FRONT OVERHEAD LED 43" TV	209	MOTION POWER LOUNGE 72" (forces 807) Zero Proximity and Power Headrest (APEX)	583	ONGUARD PACKAGE — ROADWATCH — <b>NEW</b> (Adaptive Cruise Control, Collision Mitigation, Electronic Stability Control with Roll Stability, and Automatic Traction Control)
095	SATELLITE WINEGARD IN-MOTION	256	ROOF MOUNT PATIO AWNING 2ND DOOR SIDE	807	SOFA BED W/MATTRESS 80" (forces 209)
101	SATELLITE DISH TRAV'LER DISH NETWORK	297	LITHIUM BATTERY PACKAGE	965	1ST BAY 90° SLIDE-OUT TRAY
102	SATELLITE DISH TRAV'LER DIRECT TV	560	VIP DELIVERY	967	2ND FULL BAY 90° SLIDE-OUT TRAY
107	DISHWASHER	563	TECHNOLOGY PACKAGE (JBL® Audio System, WiFi Ranger, Cell Booster, 265W Solar Panel, Mobileye)	968	2ND FULL BAY 36"/54" SLIDE-OUT TRAY
111	EXTERIOR FREEZER — <b>NEW</b>				

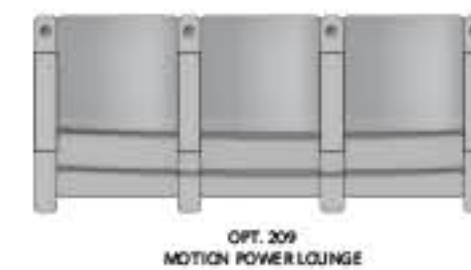
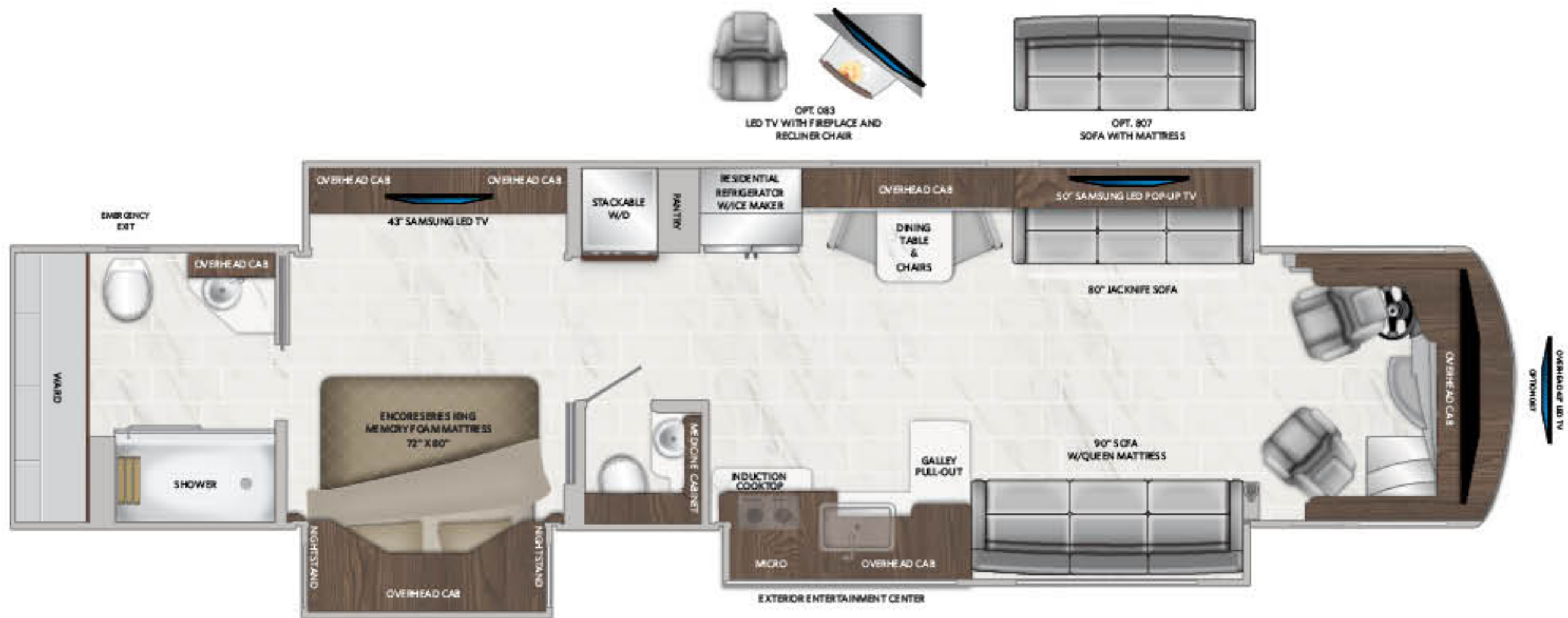
42V



42V OPTIONS

087	FRONT OVERHEAD LED 43" TV	209	MOTION POWER LOUNGE Zero Proximity and Power Headrest (APEX)	583	ONGUARD PACKAGE – ROADWATCH – <b>NEW</b> (Adaptive Cruise Control, Collision Mitigation, Electronic Stability Control with Roll Stability, and Automatic Traction Control)
095	SATELLITE WINEGARD IN-MOTION	256	ROOF MOUNT PATIO AWNING 2ND DOOR SIDE	965	1ST BAY 90" SLIDE-OUT TRAY
101	SATELLITE DISH TRAV'LER DISH NETWORK	297	LITHIUM BATTERY PACKAGE	967	2ND FULL BAY 90" SLIDE-OUT TRAY
102	SATELLITE DISH TRAV'LER DIRECT TV	560	VIP DELIVERY	968	2ND FULL BAY 36"/54" SLIDE-OUT TRAY
107	DISHWASHER	563	TECHNOLOGY PACKAGE (JBL® Audio System, WiFi Ranger, Cell Booster, 265W Solar Panel, Mobileye)		
111	EXTERIOR FREEZER – <b>NEW</b>				

45A



45A OPTIONS

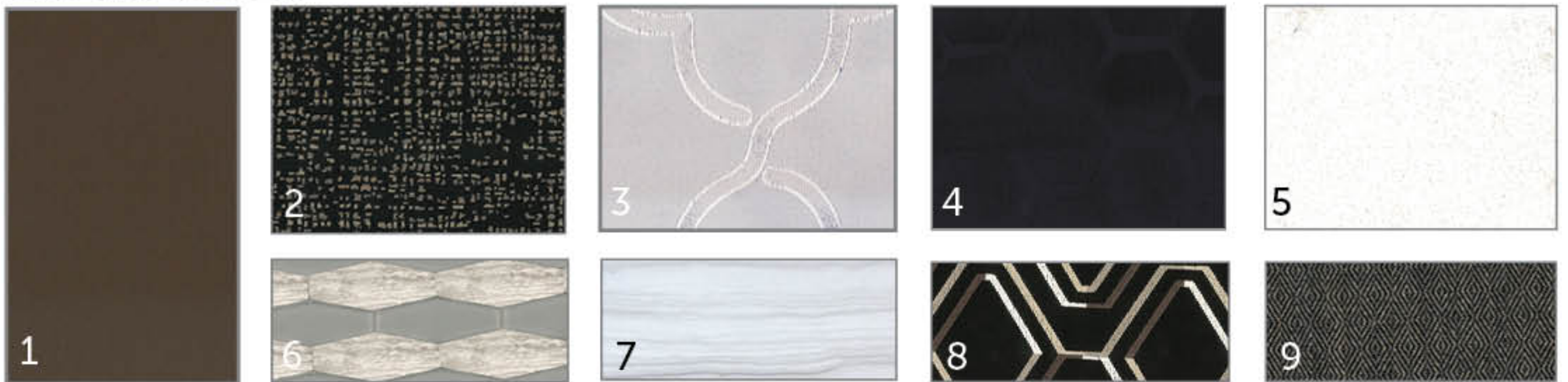
083	TV W/FIREPLACE AND RECLINER	209	MOTION POWER LOUNGE Zero Proximity and Power Headrest (APEX)	583	ONGUARD PACKAGE – ROADWATCH – <b>NEW</b> (Adaptive Cruise Control, Collision Mitigation, Electronic Stability Control with Roll Stability, and Automatic Traction Control) (Mid-year Roll-out)
087	FRONT OVERHEAD LED 43" TV	256	ROOF MOUNT PATIO AWNING 2ND DOOR SIDE	807	SOFA BED W/MATRESS
095	SATELLITE DISH WINEGARD IN-MOTION	297	LITHIUM BATTERY PACKAGE	965	1ST BAY 90" SLIDE-OUT TRAY
101	SATELLITE DISH TRAV'LER DISH NETWORK	560	VIP DELIVERY	967	2ND FULL BAY 90" SLIDE-OUT TRAY
102	SATELLITE DISH TRAV'LER DIRECT TV	563	TECHNOLOGY PACKAGE (JBL® Audio System, WiFi Ranger, Cell Booster, 265W Solar Panel, Mobileye)	968	2ND FULL BAY 36"/54" SLIDE-OUT TRAY
107	DISHWASHER				
111	EXTERIOR FREEZER – <b>NEW</b>				

# AMERICAN DREAM DECOR

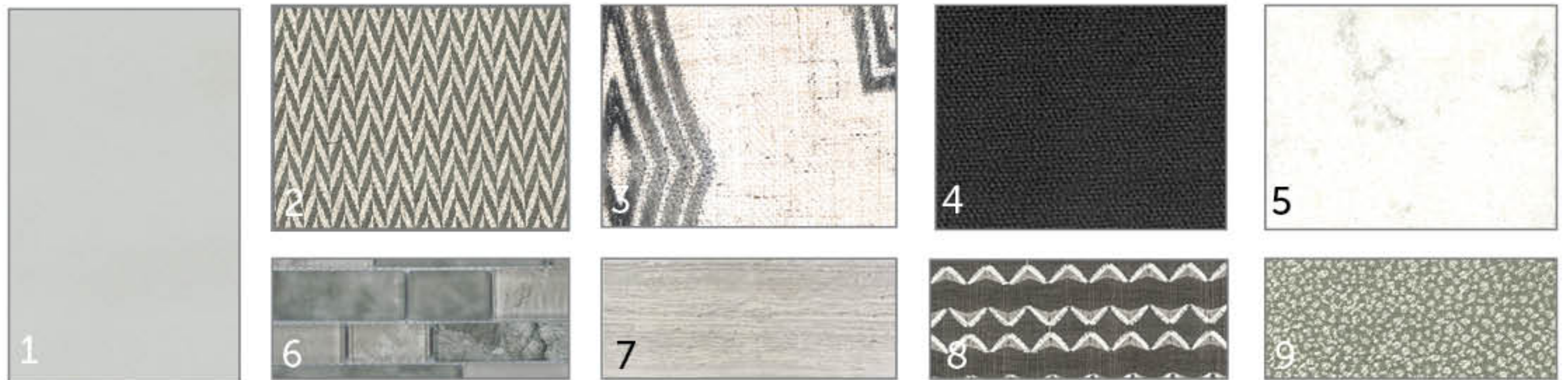
## CLUB NAVY DECOR



## LUXE TRUFFLE DECOR



## ROCKPORT GREIGE DECOR



1 FURNITURE | 2 LIVING ACCENT | 3 BEDSPREAD | 4 BED ACCENT | 5 COUNTERTOP | 6 BACKSPLASH | 7 FLOORING | 8 SOFA PILLOW | 9 VALANCES

## HARDWOOD CABINETRY



# AMERICAN DREAM

	450HP	450HP	450HP	605HP
SPECIFICATIONS	39RK	42Q	42V	45A
Wheelbase (inches)	267"	302"	302"	324"
Front GAWR (lbs)	17,000	17,000	17,000	17,000
Rear GAWR (lbs)	20,000	20,000	20,000	20,000
Tag Axle GAWR Ultra Steer B-Series (lbs)	10,000	10,000	10,000	14,000
GCWR (lbs)	62,000	62,000	62,000	71,000
Hitch Rating Weight (lbs)	15,000	15,000	15,000	20,000
Tongue Weight (lbs)	1,500	1,500	1,500	2,000
Fuel Capacity (gal)	150	150	150	150
Overall Length	40'2"	42' 11.5"	42' 11.5"	44' 11.5"
Overall Height (suspension inflated)	13' 1"	13' 1"	13' 1"	13' 1"
Overall Width (maximum)	102"	102"	102"	102"
Interior Height (maximum)	84"	84"	84"	84"
Interior Width (maximum)	96"	96"	96"	96"
Patio Awning Width	18' 0"	18' 0"	18' 0"	18' 0"
Interior Storage (cu. ft.)	127	233	235	212
Exterior Storage (cu. ft.)	72	131	131	141
Fresh Water Holding Tank (gal)	105	100	100	105
Grey Water Holding Tank (gal)	75	60	60	75
Black Water Holding Tank (gal)	50	40	40	50

## EXTERIORS

Premium Four Color, Full Body Paint



FALLING ASH



SOUTH BEACH



STONEWASHED



NIGHTHAWK

Product information, photography and illustrations included in this publication were as accurate as possible at the time of printing. For further product information and changes, please visit our website at [www.americancoach.com](http://www.americancoach.com) or contact your local American Coach dealer. Prices, materials, design and specifications are subject to change without notice. All weights, fuel, liquid capacities and dimensions are approximate. American Coach has designed its recreational vehicles to provide a variety of uses for its customers. Each vehicle features optimal seating, sleeping, storage and fluid capacities. The user is responsible for selecting the proper combination of loads (i.e., occupants, equipment, fluids, cargo, etc.) to ensure that the vehicle's capacities are not exceeded.

©2020 REV Group Inc. Printed in USA. 3/1. Model Year 2021.