

LEPRECHAUN

LEPRECHAUN



Shown with partial paint option.



LEPRECHAUN VALUE LEADER FLOORPLANS AND SPECIFICATIONS



230FS SHOWN WITH CARMEL DRIZZLE DÉCOR



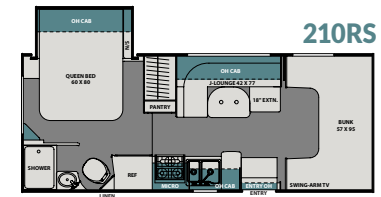
210RS SHOWN WITH CARMEL DRIZZLE DÉCOR



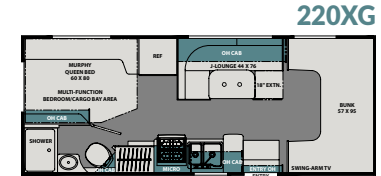
220XG SHOWN WITH ESPRESSO DÉCOR

LEPRECHAUN TOP FEATURES

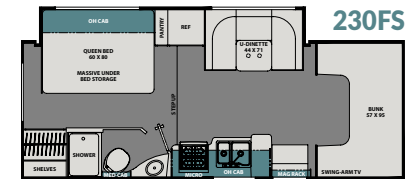
- Superior Construction**
 - "Certified Green" Product
 - 2" Thick Sidewall Construction with Azdel "SuperLite" Substrate and 100% Welded Aluminum Framing
 - CrossFlex Reinforced PVC Roof Material
- Camping Enhancements**
 - Full Length Patio Awning and LED Patio Light Bar
 - LP Quick-Connect Line
 - Solar Port Connection
 - Warehouse Storage
 - Exterior Warehouse Storage Compartment
- Comfort**
 - Residential Bed Sizes
 - Large Cab-Over Area
 - Oversize Dinettes
- Upgraded Electronics**
 - "RV" Grade TV's
 - Omni Directional Antenna
 - Back-Up Camera with In-Dash Monitor
- Improved Mechanical Systems**
 - Large Fresh Water Tank
 - Even-Cool Ducting System (On Select Models)
 - 2nd Rooftop A/C Pre-Wire (On Select Models)



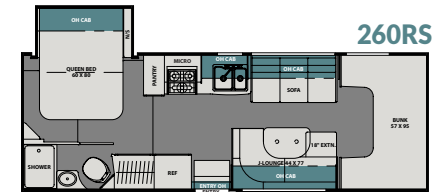
210RS



220XG



230FS



260RS



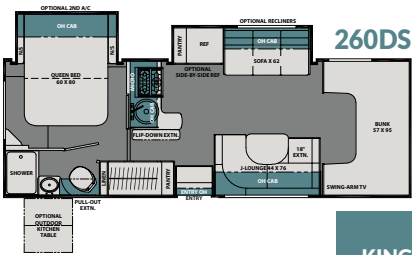
270QB



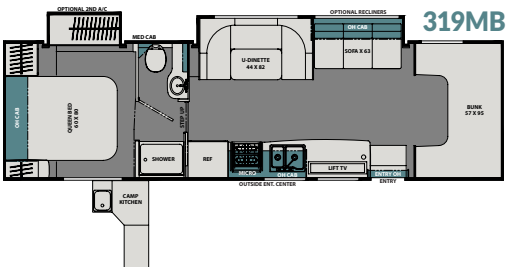
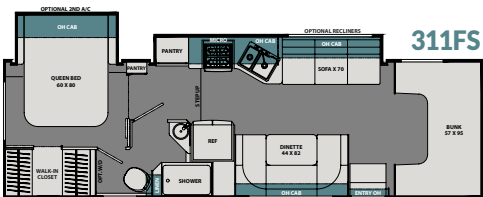
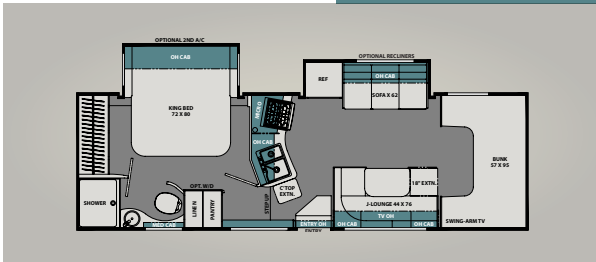
300BH

LEPRECHAUN VALUE LEADER SPECIFICATIONS

MODEL	210RS	220XG	230FS	260RS	270QB	300BH
Chassis***	4500 CHEVY/350 FORD	4500 CHEVY/350 FORD	4500 CHEVY/350 FORD	4500 CHEVY/350 FORD	4500 CHEVY/350 FORD	450 FORD
Engine	V8-6.0L/V10-6.8L	V8-6.0L/V10-6.8L	V8-6.0L/V10-6.8L	V8-6.0L/V10-6.8L	V8-6.0L/V10-6.8L	V10-6.8L
Horse Power	341/305	341/305	341/305	341/305	341/305	305
Torque	373/420	373/420	373/420	373/420	373/420	420
Wheel Base	159"/158"	159"/158"	177"/176"	191"/190"	191"/190"	223"
GVWR (lbs.)	14,200/12,500	14,200/12,500	14,200/12,500	14,200/12,500	14,200/12,500	14,500
GCWR (lbs.)	20,000/18,500	20,000/18,500	20,000/18,500	20,000/18,500	20,000/18,500	22,000
UVW (approx. lbs.)	9,890/9,830	9,300/9,400	10,750/10,800	10,470/10,390	10,316/10,294	12,470
CCC (approx. lbs.)	4,310/2,670	4,900/3,100	3,425/1,700	3,730/2,110	3,884/2,206	2,030
GAWR Front (lbs.)	4,600/5,000	4,600/5,000	4,600/5,000	4,600/5,000	4,600/5,000	5,000
GAWR Rear (lbs.)	9,600/8,500	9,600/8,500	9,600/8,500	9,600/8,500	9,600/8,500	9,600
Interior Height	6' 11"	6' 11"	6' 11"	6' 11"	6' 11"	6' 11"
Exterior Width	8' 4"	8' 4"	8' 4"	8' 4"	8' 4"	8' 4"
Exterior Height (with A/C)	10' 11"	10' 11"	10' 11"	10' 11"	10' 11"	10' 11"
Exterior Length	24' 9"/24' 3"	24' 9"/24' 3"	26' 6"/26' 0"	27' 11"/27' 5"	30' 0"/29' 6"	32' 11"
Tow Capacity (lbs.)	5,000	5,000	5,000	5,000	5,000	7,500
Fuel Capacity (gal.)	57/55	57/55	57/55	57/55	57/55	55
LP Capacity (lbs.)	68	68	68	68	40	68
Fresh Water Capacity (gal.)	50	41	43	50	40	50
Water Heater Capacity (gal.)	6	6	6	6	6	6
Grey Tank Capacity (gal.)	28	28	31	31	31	34
Black Tank Capacity (gal.)	31	31	31	31	31	29
Exterior Storage (cu. ft.)	67	38	40	60	77	77
Awning Length	15'	15'	17'	18'	20'	11'



298KB KING BED FLOOR PLAN



LEPRECHAUN FULL BODY PAINT OPTIONS



WINE FULL BODY PAINT



COFFEE FULL BODY PAINT



PARTIAL BODY PAINT

LEPRECHAUN PREMIER SPECIFICATIONS

MODEL	260DS	298KB	311FS	319MB
Chassis***	4500 CHEVY/450 FORD	450 FORD	450 FORD	450 FORD
Engine	V8-6.0L/V10-6.8L	V10-6.8L	V10-6.8L	V10-6.8L
Horse Power	341/305	305	305	305
Torque	373/420	420	420	420
Wheel Base	191"/190"	202"	220"	223"
GVWR (lbs.)	14,200/14,500	14,500	14,500	14,500
GCWR (lbs.)	20,000/22,000	22,000	22,000	22,000
UVW (approx. lbs.)	11,020/11,330	12,300	12,350	11,650
CCC (approx. lbs.)	3,180/3,170	2,200	2,150	2,850
GAWR Front (lbs.)	4,600/5,000	5,000	5,000	5,000
GAWR Rear (lbs.)	9,600	9,600	9,600	9,600
Interior Height	6' 11"	6' 11"	6' 11"	6' 11"
Exterior Width	8' 4"	8' 4"	8' 4"	8' 4"
Exterior Height (with A/C)	10' 11"	10' 11"	10' 11"	10' 11"
Exterior Length	27' 11"/27' 5"	30' 5"	31' 10"	32' 11"
Tow Capacity (lbs.)	5,000/ 7,500	7,500	7,500	7,500
Fuel Capacity (gal.)	57/55	55	55	55
LP Capacity (lbs.)	68	68	68	68
Fresh Water Capacity (gal.)	50	48	50	50
Water Heater Capacity (gal.)	6	6	6	6
Grey Tank Capacity (gal.)	31	34	32	32
Black Tank Capacity (gal.)	31	31	31	29
Exterior Storage (cu. ft.)	60	80	70	100
Awning Length	18'	21'	19'	21'



GVWR (Gross Vehicle Weight Rating) is the maximum permissible weight of the unit when fully loaded. It includes all weights, inclusive of all fluids, occupants, cargo, optional equipment and accessories. For safety and product performance do NOT exceed the GVWR.

GCWR (Gross Combined Weight Rating) is the maximum permissible loaded weight of your motor home and any towed trailer or towed vehicle. Actual GCWR of this vehicle may be limited by the sum of the GVWR and the installed hitch receiver maximum capacity rating; see hitch rating label for detail.

GAWR (Gross Axle Weight Rating) is the maximum permissible weight, including cargo, fluids, optional equipment and accessories that can be safely supported by each axle.

UVW (Unloaded Vehicle Weight)* is the typical weight of the unit as manufactured at the factory. It includes all weight at the unit's axle(s), including full fuel, all fluids and LP Gas. The UVW does not include cargo, fresh potable water, additional optional equipment or dealer installed accessories.

*Estimated Average based on standard build optional equipment.

CCC (Cargo Carrying Capacity)** is the amount of weight available for fresh potable water, cargo, passengers, additional optional equipment and accessories. CCC is equal to GVWR minus UVW. Available CCC should accommodate fresh potable water (8.3 lbs per gallon). Before filling the fresh water tank, empty the black and gray tanks to provide for more cargo capacity.

** Estimated average based on standard build optional equipment

Each Coachmen motorhome is weighed at the manufacturing facility prior to shipping. A label identifying the unloaded vehicle weight of the actual unit and the cargo carrying capacity is applied to every Coachmen motorhome prior to leaving our facilities.

The load capacity of your unit is designated by weight, not by volume, so you cannot necessarily use all available space when loading your unit.

Actual towing capacity is dependent upon your particular loading and towing circumstances, which includes the GVWR, GAWR and GCWR as well as adequate trailer brakes. Please refer to the Operator's Manual of your vehicle for further towing information.

*** See website for current information and specifications for the new FORD 2021 chassis

LEPRECHAUN INTERIOR DÉCORS



ESPRESSO DÉCOR - 319MB SHOWN



CARMEL DRIZZLE DÉCOR - 298KB SHOWN

EXPERIENCE COACHMEN RV!
visit
[CoachmenRV.com/
Leprechaun](http://CoachmenRV.com/Leprechaun)

for more photos, virtual
tours, training videos and the
latest model standards
and options.

YOUR LEPRECHAUN DEALER



Coachmen Owner "Digital Kit" App

Now you can have your Owner's Manual with you wherever you are. Download our FREE App from the App Store or Google Play and you'll have the information right at your fingertips.



www.ForestRiverBuyLocal.com



Learn More
Scan this barcode using
a QR Reader on your
smart phone to learn
more about Forest River.



A Berkshire Hathaway company.

All information contained in this brochure is believed to be accurate at the time of publication. However, during the model year, it may be necessary to make revisions and Coachmen reserves the right to make all such changes without notice, including prices, colors, materials, equipment and specifications as well as the addition of new models and the discontinuance of models shown in this brochure. Therefore, please consult with your Coachmen dealer and confirm the existence of any materials, design or specifications that are material to your purchase decision. 4/20

©Copyright 2020 Coachmen RV a Division of Forest River Inc - All Rights Reserved.



24/7 EMERGENCY ROADSIDE ASSISTANCE WITH VEHICLE PURCHASE*

- | | |
|----------------|-----------------|
| TOWING | WINCH-OUT |
| JUMP-STARTS | MOBILE MECHANIC |
| TIRE CHANGES | TECHNICAL |
| FLUID DELIVERY | SUPPORT |
| LOCKOUT | DEALER LOCATOR |
| SERVICE | SERVICES |



*VALID FOR 1 YEAR FROM DATE OF PURCHASE



COACHMEN OWNERS ASSOCIATION

FREE MEMBERSHIP
www.coachmenowners.com



423 N. Main Street • P.O. Box 30
Middlebury, IN 46540

To learn more about Coachmen RV and our products and see how Coachmen is making the easy life easier, call us toll free at (800) 353-7383, or visit www.coachmenrv.com