





26DB

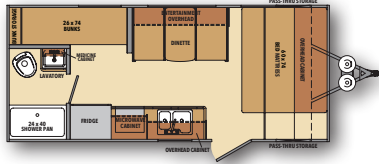
This is the perfect family travel trailer for the campground or going off the grid! This unit has a front walk around queen bed, and large double over double rear bunks with an abundance of storage for the whole family. The large dinette and jack knife sofa both fold into sleeping areas so you can easily sleep eight people. The kitchen features a residential stainless steel single bowl sink with a pull down sprayer faucet, seamless countertops, and an oversized residential 10.7 cu. ft. refrigerator. The exterior has dual entry doors, a large pass through storage, and the conveniently located Shasta Sanitize Station. The 26DB is simply an amazing trailer for family fun.



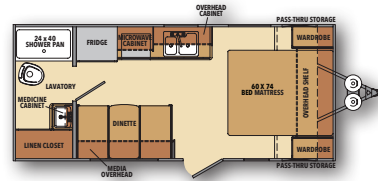
20RB

You will be amazed at how much the 20RB has to offer in a small, affordable, and extremely lightweight travel trailer. Easily sleep three with a front walk around queen bed, and jack knife sofa that folds down into an additional sleeping area. The mid kitchen offers an extended countertop, and our standard stainless steel sink. The entertainment center is perfectly located for your enjoyment anywhere in this unit for those rainy days. Storage was one of the top priorities in the design of this trailer. Next to the residential 10.7 cu. ft. refrigerator, there is an oversized pantry for all your camping needs. There are additional storage areas under the sofa, queen bed, and large exterior pass through storage. With an outside refrigerator, outside shower, and Shasta Sanitize Station you will have more time to spend enjoying the great outdoors!

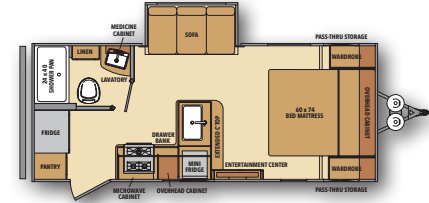




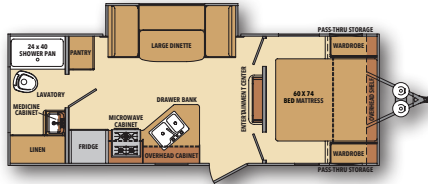
18BH



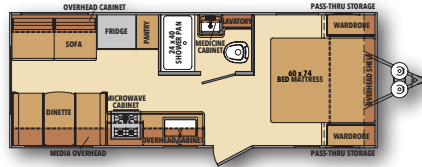
18FQ



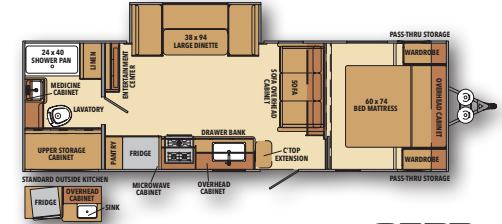
20RB



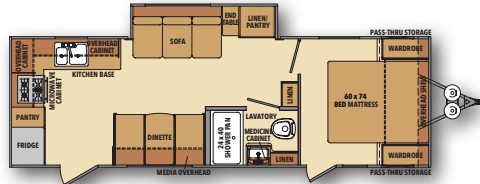
21RB



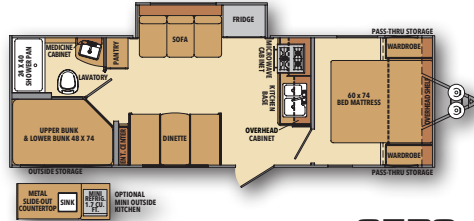
21CK



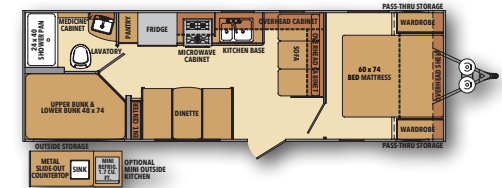
25RB



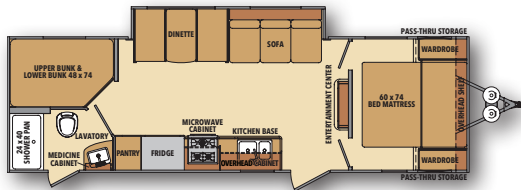
25RK



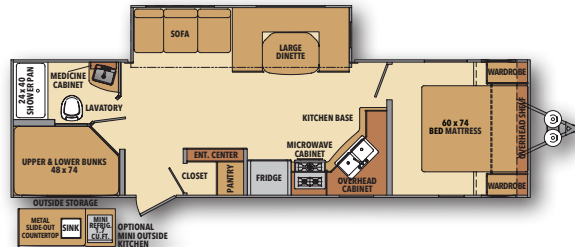
25RS



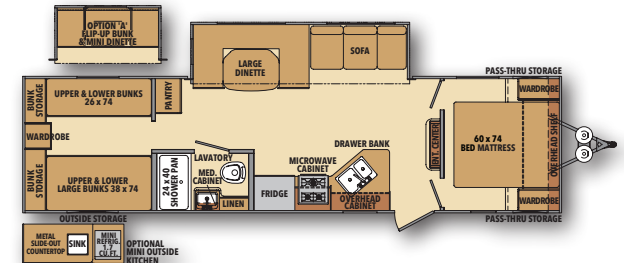
26BH



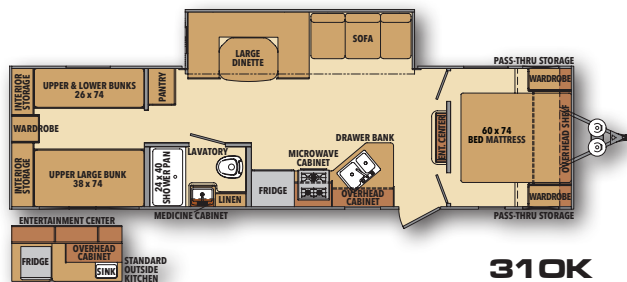
26DB



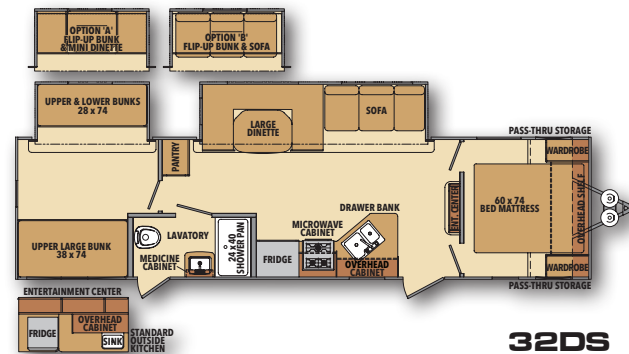
28BH



30QB



310K



32DS

STANDARDS

EXTERIOR

- Shasta Sanitize Station
- Bumper with Drain Hose Carrier and End Caps
- Baggage Doors with Magnetic Door Catches
- Straight Axle with electric Brakes
- E-Z Lube Hubs
- Radial tires
- Radius Entry door with Screen
- Front Diamond Plate Rock Guard
- Molded Rain Gutter with Extra Long spouts
- Black-Framed Radius Safety Glass Windows
- Back-Up Camera Prep
- Solar Panel Prep
- Wi-Fi Prep
- Spare tire & carrier
- XL Grab Handle
- Outside Shower
- Stabilizer Jacks
- Exterior Cable Hook Up

INTERIOR

- LED Interior Lights
- Pocket-Bored and Screwed Cabinets

- 13.5K BTU Ducted AC (N/A on 18' Models)
- Full Extension Ball Bearing Drawer Guides
- Blackout Shades in Bedroom
- Box Valances in Living Area
- Jack Knife Sofa
- USB Charging Stations
- Cable TV Hook-up in Living Area and in Bedroom
- RG6 Coaxial Cable
- Armstrong Tile Flooring
- Under Bed Storage
- Sink cover
- Decorative Bedspread

KITCHEN

- Oversized Stainless Steel Residential Sink with Pull Down Sprayer
- Range Hood with Exhaust Fan

BATHROOM

- Powered Roof Vent
- Marine Foot Flush Toilet
- Medicine Cabinet with Mirror
- Large Sink
- Shower with Surround
- Skylight

POWER SYSTEMS

- 12V Demand Water Pump

- Systems Monitor Panel
- Auto-Ignition Furnace with Wall Thermostat
- Water Heater Bypass
- Water System Winterization Kit
- 18K BTU or 25K BTU Furnace
- Gas/Electric/DSI Water Heater

CONSTRUCTION

- .024/.030 Aluminum Exterior Skin
- Radius Wood Rafters
- R-7 Fiberglass Insulation in All Walls, Floor and Roof
- Aerodynamic Radius Front Profile
- 16" On-Center Wood Wall Studs
- Electric Slide Rooms
- Diflex PVC roof material with 20 year limited warranty
- 8' Exterior Width
- Cambered Steel I-Beam Frame

SAFETY FEATURES

- Co2 Detector
- LP Leak Detector
- Fire Extinguisher
- Smoke Alarm
- CPAP Docking Station

OPTIONS

EXTERIOR

- Power Tongue Jack
- Electric Stabilizing Jacks
- Aluminum Wheels
- RVQ Grill
- 30# LP Bottles IPO Standard 20# (N/A on 18' Models)
- 15K BTU A/C
- Mini Outside Kitchen (25RS, 26BH, 28BH, 30QB)
- Flip Down Storage Rack
- 2nd AC Prep 26 ft and up
- 15K BTU Ducted AC
- 2nd 13.5 BTU AC w/ 50 AMP Service 26 foot and up
- Heated/Enclosed Underbelly (N/A 18's)

INTERIOR

- Glass Cook-Top & Oven w/LED Lights
- Hide-A-Bed Sofa IPO Jack-Knife Sofa
- Fireplace
- 24" & 32" TVs
- Junior Dinette IPO Lower Bunk (30QB, 32DS, 31OK)
- Sit-N-Sleep Sofa IPO Lower Bunk (32DS)
- Free Standing Table/4 Chairs (Deep Slides Only)

- 8 cu ft Gas/Elec Refrigerator

STEP UP PACKAGE

- Glass cooktop/oven
- Solid Step
- Power Tongue Jack

CAMPING WITH EASE PACKAGE

- 6 Gallon Gas/Electric DSI HW Heater
- SS Microwave Oven
- 13.5 BTU A/C
- 3-Burner Cook Top Stove with glass cover
- Pleated Shades
- High-Rise Faucet w/Sprayer
- LED Interior Lights
- Decorative Back Splash
- Thermal-Foil Kitchen Countertops
- USB Charging System
- Zamp Solar Prep Package
- Power Awning w/LED light
- Marine Grade Outside Speakers
- AM/FM Blue-Tooth Stereo w/Speakers
- 10.7 cu ft Stainless Steel Residential Refrigerator
- Double 20# LP Bottles w/ABS Cover (N/A on 18's)
- Stainless Steel Under Mount Kitchen Sink

- Wireless Rear Back-Up Camera Prep
- Front Colored Rock Guard
- Color Matching Entry and Baggage Doors
- Decorative Cabinet Pulls
- Shower & Surround
- Pre-Wired for Wi-Fi
- LED Light Above Slide-Outs
- Roadside Assistance
- Magnetic Baggage Door Catches

SPECIFICATION DEFINITIONS

GVWR (Gross Vehicle Weight Rating) - is the maximum permissible weight of the unit when fully loaded. It includes all weights, inclusive of all fluids, cargo, optional equipment and accessories. For safety and product performance do NOT exceed the GVWR.

GAWR (Gross Axle Weight Rating) - is the maximum permissible weight, including cargo, fluids, optional equipment and accessories that can be safely supported by a combination of all axles.

UVW (Unloaded Vehicle Weight)* - is the typical weight of the unit as manufactured at the factory. It includes all weight at the unit's axle(s) and tongue or pin and LP Gas. The UVW does not include cargo, fresh potable water, additional optional equipment or dealer installed accessories.

*Estimated Average based on standard build optional equipment.

CCC (Cargo Carrying Capacity)** - is the amount of weight available for fresh potable water, cargo, additional optional equipment and accessories. CCC is equal to GVWR minus UVW. Available CCC should accommodate fresh potable water (8.3 lbs per gallon). Before filling the fresh water tank, empty the black and gray tanks to provide for more cargo capacity.

**Estimated average based on standard build optional equipment.

Each Forest River RV is weighed at the manufacturing facility prior to shipping. A label identifying the unloaded vehicle weight of the actual unit and the cargo carrying capacity is applied to every Forest River RV prior to leaving our facilities. The load capacity of your unit is designated by weight, not by volume, so you cannot necessarily use all available space when loading your unit.

FLOOR PLAN	18BH	18FQ	20RB	21CK	21RB	25RB	25RK	25RS	26BH	26DB	28BH	30QB	31OK	32DS
Overall Length	23' 1"	23' 1"	24' 2"	26' 2"	25' 0"	30' 3"	30' 3"	30' 3"	30' 3"	31' 8"	34' 4"	36' 0"	36' 0"	36' 7"
Exterior Height w/ A/C	10' 6"	10' 6"	11'	11'	11'	11'	11'	11'	11'	11'	11' 2"	11' 2"	11' 2"	11' 5"
GVWR (lbs.)	5,050	5,050	6,350	5,750	6,350	6,750	7,000	6,750	6,250	6,950	7,950	7,750	7,750	9,530
UVW (lbs.)	3,210	3,235	4,417	3,890	4,400	5,238	5,100	4,890	4,405	5,280	6,205	6,090	6,165	7,254
Hitch Weight (lbs.)	350	325	455	500	515	580	605	690	480	580	625	780	700	780
CCC (Cargo Carrying Capacity)	1,821	1,796	1,933	1,822	1,912	1,512	1,882	1,822	1,807	1,632	1,707	1,624	1,547	1,980
Fresh Water Tank Cap. (gal.)	42	42	42	42	42	42	42	42	42	42	442	42	42	42
Grey Water Tank Cap. (gal.)	36	36	36	36	36	36	72	72	36	36	72	36	36	36
Black Water Tank Cap. (gal.)	36	36	36	36	36	36	36	36	36	36	36	36	36	36
Awning	12'	12'	12'	16'	16'	16'	16'	12'	12'	20'	17'	17'	17'	17'
LP Gal.	4.5	4.5	4.5	9	9	9	9	9	9	9	9	9	9	9



TAKE IT ALL WITH YOU!

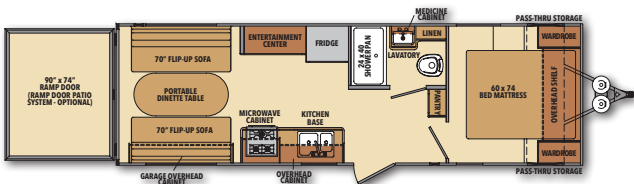
Whether you are taking off to enjoy the highways and byways of North America, or playing in the dirt at your favorite recreational spot or just wanting to enjoy time spent with family and friends at the stadium, Shasta Toy haulers allow you to take it all with you.

WE GIVE YOU MORE... More garage storage, more cargo carrying capacity, more tire load, more refrigerator space and more room under the awning, than the other competitors. Shasta gives you more value!

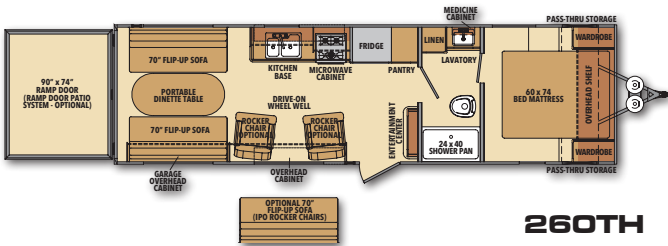
OPTIONS

The Shasta toy hauler enjoys all the same standards and options as the travel trailers with the following additions:

- Ramp patio door system
- Patio screen wall
- Toy Lok
- (2) swivel rockers (260TH only)
- Flip up sofa over wheel well (260TH only)



240TH



260TH

FLOOR PLAN	240TH	260TH
Overall Length	29' 4"	31' 10"
Width	8'	8'
Exterior Height w/ A/C	11' 2"	11' 2"
Main Slide Room Height	N/A	N/A
GVWR (lbs.)	8,000	8,800
UVW (lbs.)	5,090	5,290
Hitch Weight (lbs.)	770	880
CCC (Cargo Carrying Capacity)	3,025	3,475
Fresh Water Tank Cap. (gal.)	42	42
Grey Water Tank Cap. (gal.)	36	36
Black Water Tank Cap. (gal.)	36	36
Awning	20'	20'
Furnace (BTU's)	18K	18K
Water Heater Capacity (gal.)	6	6
LP Gal.	9	9



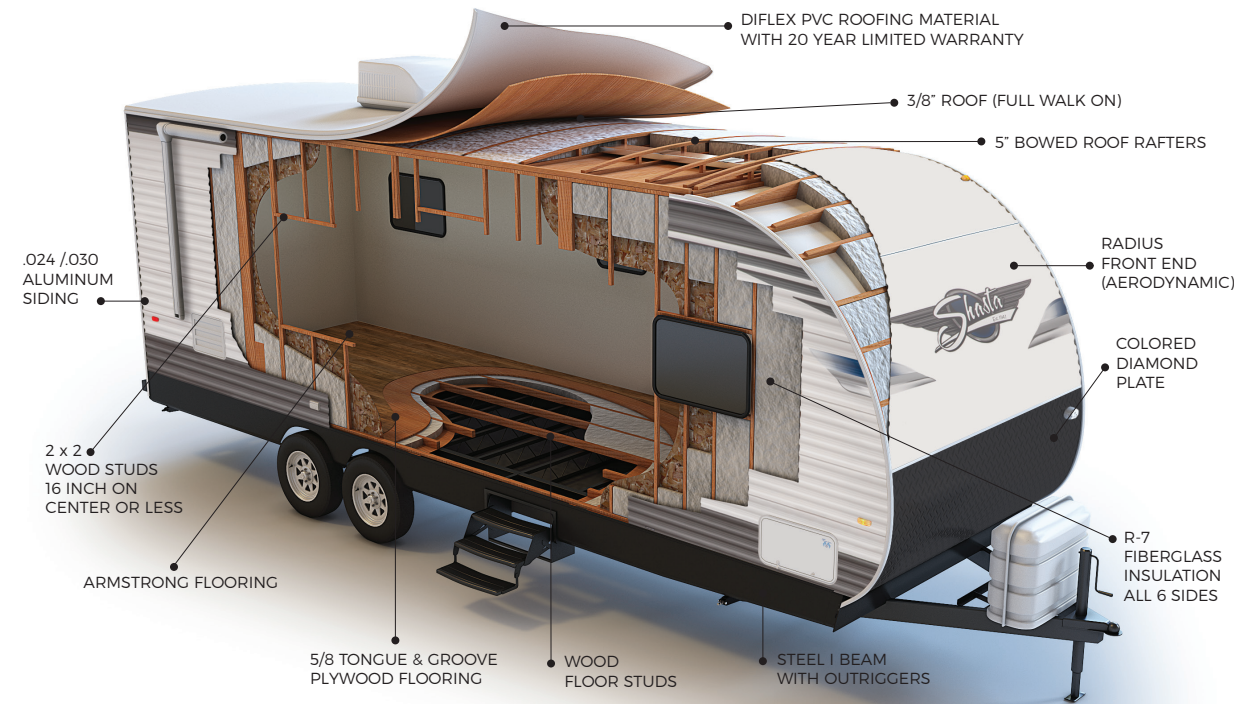
IS BUILT TO LAST!

Every Shasta is assembled with the pride and quality craftsmanship you would expect from a brand that has been building trailers since 1941.

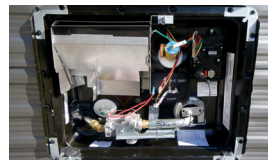
Only the best materials and construction methods are used during the manufacturing process. Every unit is put through a rigorous inspection procedure and is tested to ensure the highest of standards.

We utilize premium wood products like 2x2 wall studs on 16" centers, 5/8" thick tongue and groove plywood floors, not chip board! The 5" wood roof trusses support a full walk on 3/8" roof decking wrapped with a seamless PVC membrane that has a 20 year limited warranty against defects.

Rest easy and rest assured your Shasta trailer is built right and built to last!



Residential Size 12 Volt Stainless Steel Refrigerator



Gas/Electric DSI Water Heater



Black out pleated shades in living and bedroom



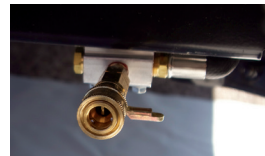
Back up camera prep



Pre wired for Wi-Fi



Optional rear folding storage rack



Outside LP gas quick connect



Dual Port USB charging with outlet



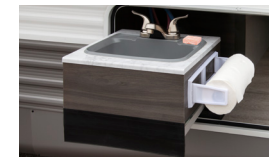
Glass cooktop stove with LED lighted dials



Solar Prep



Stainless steel sink and sprayer



Sanitize Station (Open)



Sanitize Station (Closed)



Optional Solid Step



Digital Owner's manual

THE SHASTA STORY - A PROUD HERITAGE

In 1941, when Californian Robert Gray built the first Shasta "house trailer" to be used as mobile military housing, he had no idea his homes on wheels would play a major role in establishing a billion-dollar industry. Or that the little trailers would spark wanderlust in Americans that would carry them across the miles and into the next century. Shasta was, and remains, an important player in the ultimate American Dream; the freedom and desire to roam, explore and enjoy well earned leisure time with the people we love.

In the 1950s and 60s, the toaster-on-wheels look of the original Shasta trailer was the most recognizable shape on the road. There were other RV brands, but only Shasta was distinguished by those wings that signified flight and freedom. Through the 1960s and 70s, RVs became bigger and better, America's burgeoning highway system evolved into interstates, and the wanderlust grew ever stronger. In the 80s and 90s, RVs continued to evolve into safer, more sophisticated homes away from home, with more features and greater comfort than ever.

Today, 70 years and three generations of Shasta owners later, Americans have the desire to travel like never before. Motivated by the rediscovery of our families and renewal of ourselves, we still respond to the call of the road.

In terms of product, the company has come a long way from the "toasters-on-wheels". Today's Shastas have sleek profiles and amenities that were unimaginable a generation ago. Yet, it is the memorable image of the little trailer with wings that brings each of us something no other manufacturer has to offer; nostalgia.

As the industry's longest producer of recreational vehicles, Shasta has manufactured hundreds of thousands of RVs. We've earned our success in the best possible way - through experience... more experience than any other RV company in the world. Shasta's respected name prevails in today's fast-moving RV industry because of that experience, combined with a strong, service oriented dealer network, a loyal, repeat-customer base, and our outstanding association with our parent company, Forest River. Shasta is proud of its longevity, and we pledge to continue to listen and to improve our commitment to satisfying America's wanderlust, and to persist in creating generations of memories to come.



CUSTOMER SERVICE IS OUR #1 PRIORITY!



FREE MEMBERSHIP
to Forest River Owners' Group
www.forestriverfrog.com

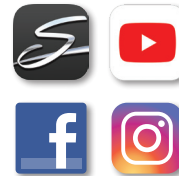


PRE-DELIVERY INSPECTION

20,000 square feet of quality assurance. The bare essentials for a premium product. This state-of-the-art facility gives immediate daily feedback to production for quality assurance in every unit built.

All information contained in this brochure is believed to be accurate at the time of publication. However, during the model year, it may be necessary to make revisions and Forest River, Inc., reserves the right to make all such changes without notice, including prices, colors, materials, equipment and specifications as well as the addition of new models and the discontinuance of models shown in this brochure. Therefore, please consult with your Forest River, Inc., dealer and confirm the existence of any materials, design or specifications that are material to your purchase decision. ©Copyright 2016 Shasta, a Division of Forest River Inc - All Rights Reserved.

FOLLOW US



Learn More
Scan this barcode using a QR Reader on your smart phone to learn more about Forest River.



A Berkshire Hathaway company.

SHASTA OWNER "DIGITAL KIT" APP

Now you can have your Owner's Manual with you wherever you are. Download our FREE App from the App Store or Google Play and you'll have the information right at your fingertips.



24/7 EMERGENCY ROADSIDE ASSISTANCE WITH VEHICLE PURCHASE*

TOWING
JUMP-STARTS
TIRE CHANGES
FLUID DELIVERY
LOCKOUT
SERVICE

WINCH-OUT
MOBILE MECHANIC
TECHNICAL
SUPPORT
DEALER LOCATOR
SERVICES



*VALID FOR 1 YEAR FROM DATE OF PURCHASE



www.ForestRiverBuyLocal.com

YOUR SHASTA DEALER:

Shasta Recreational Vehicles • 105 14th Avenue • Middlebury, IN 46540 • (574) 825.7178 • www.ShastaRVing.com