



Atlas fifth wheels and travel trailers deliver highly visible, value-driven standard features. The inclusions and design are timeless, yet forward trending to address your desire for comfort and style.

Features in Atlas

- Fold Down Entry Steps** - stability you need when coming and going from your Atlas. Easy to expand and store away, these durable aluminum steps deliver a sound platform.
- Arctic Insulation Package** - While other RVers are putting their rigs away for the winter, Atlas owners will still be traveling strong all winter long thanks to the Arctic Insulation Package. This package adds extra insulation from the elements, which means you'll have peace of mind up North and up the mountains.
- Fully Enclosed and Heated Underbelly** - all of your RV's vital functions are kept out of the elements. Plus, this extra layer of protection means you can travel further into the year.
- 50 Amp Service Standard**

Atlas Travel Trailer

EXTERIOR

15,000 BTU A/C
6 Gal. Gas/Electric Water Heater
Outside TV Hook up & Mount
Outside Speakers
50 Amp Detachable Marine Power Cord
Solar Prep
Backup Camera Prep
Spare Tire
Exterior Spray Port

INTERIOR

Large Drawers Under Dinette Booth
Oversized Farm-Style Single Bowl Sink
High Rise Pull-Out Faucet
3 Burner Range w/Glass Cover
LED HD TV
8 cu. ft. Refrigerator
Seamless Countertops
LED Interior Lighting
Fireplace
Porcelain Toilet
Medicine Cabinet
Reading Lights in Bedroom
Pop Up Power Station



2902BH

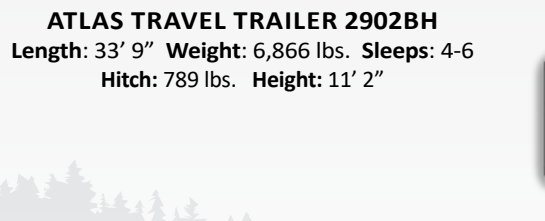
Standard Features In Every Atlas Travel Trailer Floor Plan



ATLAS TRAVEL TRAILER 2202RB
Length: 26' 10" Weight: 5,806 lbs. Sleeps: 2-4
Hitch: 754 lbs. Height: 11' 5"



ATLAS TRAVEL TRAILER 2732RB
Length: 31' 1" Weight: 6,354 lbs. Sleeps: 2-4
Hitch: 754 lbs. Height: 11' 5"



ATLAS TRAVEL TRAILER 2902BH
Length: 33' 9" Weight: 6,866 lbs. Sleeps: 4-6
Hitch: 789 lbs. Height: 11' 2"



ATLAS TRAVEL TRAILER 3020BH
Length: 36' 10" Weight: 7,755 lbs. Sleeps: 4-8
Hitch: 991 lbs. Height: 11' 2"



ATLAS TRAVEL TRAILER 3302RL
Length: 37' 5" Weight: 8,391 lbs. Sleeps: 2-4
Hitch: 1,132 lbs. Height: 11' 7"



ATLAS TRAVEL TRAILER 3382BH
Length: 37' 6" Weight: 8,382 lbs. Sleeps: 4-6
Hitch: 1,162 lbs. Height: 11' 7"

*All information & specifications are for units manufactured after 11/01/2020



3552MBKB

Atlas Fifth Wheel

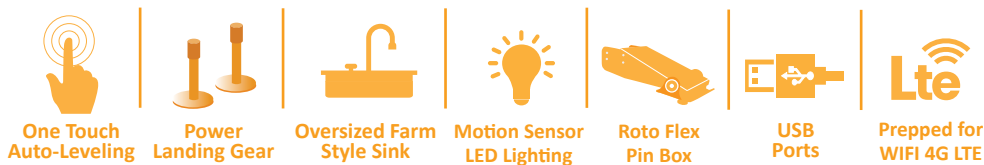
EXTERIOR

15,000 BTU A/C
6 Gal. Gas/Electric Water Heater
Outside TV Hook up & Mount
Outside Speakers
50 Amp Detachable Marine Power Cord
Solar Prep
Backup Camera Prep
Spare Tire
Level Up Auto-Leveling (select models)
Exterior Spray Port

INTERIOR

Large Drawers Under Dinette Booth
Oversized Farm-Style Single Bowl Sink
High Rise Pull-Out Faucet
3 Burner Range w/Glass Cover
LED HD TV
8 cu. ft. Refrigerator
12 cu. ft. Refrigerator (select models)
Seamless Countertops
LED Interior Lighting
Fireplace
Porcelain Toilet
Medicine Cabinet
Reading Lights in Bedroom
Pop Up Power Station
Washer/Dryer Prep (select models)

Standard Features In Every Atlas Fifth Wheel Floor Plan



ATLAS FIFTH WHEEL 2502REF
Length: 29' 11" Weight: 7,876 lbs. Sleeps: 2
Hitch: 1,632 lbs. Height: 12' 5"



ATLAS FIFTH WHEEL 2942BHF
Length: 33' 10" Weight: 8,596 lbs. Sleeps: 4-6
Hitch: 1,549 lbs. Height: 12' 6"



ATLAS FIFTH WHEEL 2992RLF
Length: 33' 11" Weight: 9,164 lbs. Sleeps: 2-4
Hitch: 1,588 lbs. Height: 12' 6"



ATLAS FIFTH WHEEL 3172RLKB
Length: 33' 10" Weight: 8,624 lbs. Sleeps: 3-4
Hitch: 1,558 lbs. Height: 12' 6"



ATLAS FIFTH WHEEL 3342BHF
Length: 37' 10" Weight: 10,314 lbs. Sleeps: 3-4
Hitch: 2,018 lbs. Height: 12' 11"



ATLAS FIFTH WHEEL 3552MBKB
Length: 33' 11" Weight: 9,157 lbs. Sleeps: 3-4
Hitch: 1,587 lbs. Height: 12' 10"



ATLAS FIFTH WHEEL 3602LFKB
Length: 40' 9" Weight: 11,418 lbs. Sleeps: 3-4
Hitch: 2,582 lbs. Height: 13' 0"



ATLAS FIFTH WHEEL 3802FLKB
Length: 42' 5" Weight: 11,796 lbs. Sleeps: 3-4
Hitch: 3,092 lbs. Height: 12' 5"



MAKE EVERY JOURNEY YOUR OWN

While you search the country for new and exciting adventures, why not bring a piece of your own world along with you? With the amount of features you'll find in Atlas, you'll have everything you need to explore the open road that awaits.

Atlas 3552MBKB Fifth Wheel



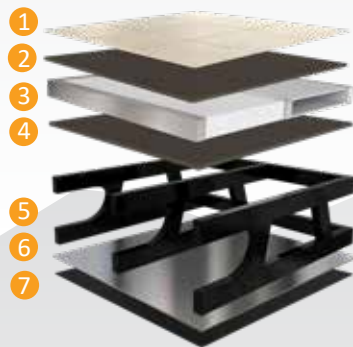
Atlas 2902BH Travel Trailer



DUTCHMEN® CONSTRUCTION ADVANTAGE

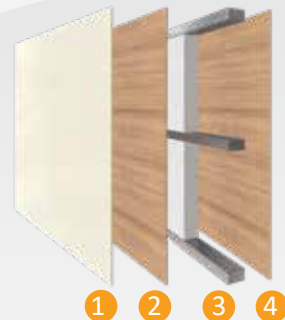
HyperDeck Floor Structure

- 1 Linoleum Flooring
- 2 Fiberglass Reinforced Polypropylene
- 3 Higher Density Foam Core
- 4 Fiberglass Reinforced Thermoplastic Base Layer
- 5 Steel powder coated main I-Beam Frame
- 6 Foil Barrier (FW Only)
- 7 Fully Enclosed Underbelly



Vacuum Bonded Laminated Walls

- 1 Fiberglass Exterior Panel
- 2 Lauan Wall Backing
- 3 Aluminum Frame with Block Foam Insulation
- 4 Lauan Interior Wall Panel



Insulated Reinforced Front Cap

- 1 Lauan Interior Panel
- 2 Aluminum Frame with Fiberglass Insulation
- 3 Fiberglass Front Cap



MORE STANDARD FEATURES MORE VALUE

Dutchmen RVs turn more heads on the lot and in the campground than any other. Why? While other manufacturers offer features as options, Dutchmen tends to make those same features standard. Call it “bang for the buck,” “more for your money,” or simply “more value.” **We’ve built a reputation for bringing RV owners more standard features for less money** for more than 25 years . . . and it’s a reputation we plan to keep.



100% PRE-DELIVERY INSPECTION

At Dutchmen, quality is standard. Every single Dutchmen RV that comes off the line receives its own pre-delivery inspection. Every unit undergoes a thorough 253-point check to ensure accurate measurements, fully-functional electronics and components.



THE INDUSTRY'S BEST RV WARRANTY

With this industry-best warranty, we take the guessing game out of what is and isn't covered. So, that means you don't have to wrangle over the details, because we deliver value by clearly outlining the major components we back during the first three years.



THE LEADER IN PARTS AND SERVICE

Replacement parts. Routine checkups. Expert advice. You name it and we've got it covered. When only the best RV services will suffice, our industry-leading parts and service department is ready to help you get back on the road - and stay there longer than ever before.



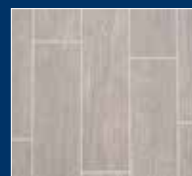
Fifth Wheels & Travel Trailers

Set your course.

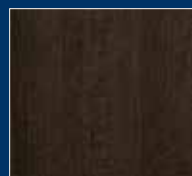
Interior Decor



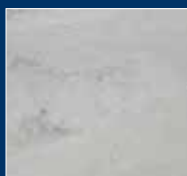
Belmont



Celina Wood
Flooring



Dutch Mahogany
Cabinets



Hailstone
Countertops

Your Dealer

PO BOX 2000 | 2164 CARAGANA COURT | GOSHEN, IN 46527 | SALES 574.537.0600

www.dutchmen.com

Visit us online to see all the Dutchmen brands, innovative models and spacious floor plans.



*Length is defined as the distance from the centerline of hitch pin/coupler to rear bumper of trailer. **Our weights represent how most units are built, inclusive of many commonly-ordered options. ***Fresh water capacity includes water heater capacity.

DISCLAIMER: Product information is as accurate as possible as of the date of brochure publication. All features, floor plans and specifications in this brochure are subject to change without notice. Please consult Dutchmen's website at www.Dutchmen.com for current product information and specifications. Tow Vehicle Disclaimer. CAUTION: Owners of Dutchmen recreational vehicles are solely responsible for the selection and proper use of tow vehicles. All customers should consult with a motor vehicle manufacturer or their dealer concerning the purchase and use of suitable tow vehicles for Dutchmen products. Dutchmen disclaims any liability or damages suffered as a result of the selection, operation, use or misuse of a tow vehicle. DUTCHMEN'S LIMITED WARRANTY DOES NOT COVER DAMAGE TO THE RECREATIONAL VEHICLE OR THE TOW VEHICLE AS A RESULT OF THE SELECTION, OPERATION, USE OR MISUSE OF THE TOW VEHICLE. REFERENCE DUTCHMEN MANUFACTURING OWNERS MANUAL FOR LIMITED WARRANTY DETAILS. © 2020 Dutchmen 11-01-2020-ATLAS-Printed in U.S.A



Dutchmen®



To learn more visit our website dutchmen.com