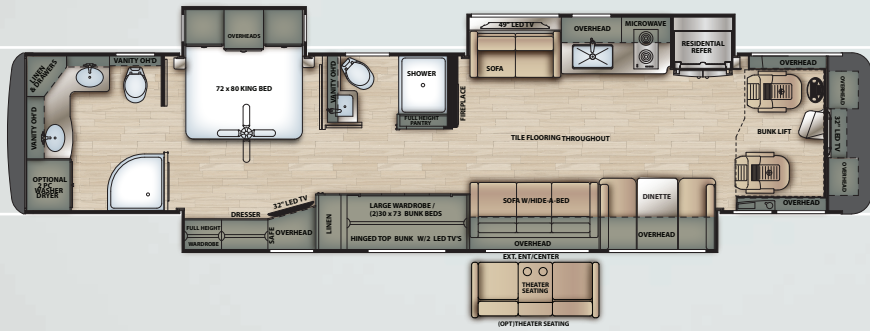


by Forest River



Your Luxury.
Your Destination.



45CA

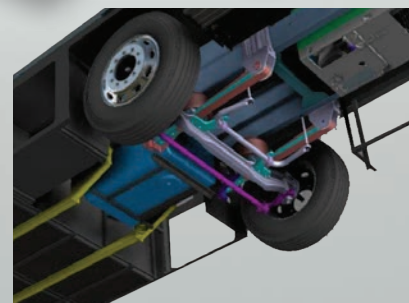






TRU-BRACE FOUNDATION

for more information please visit
www.foresriverinc.com/BerkshireXLT



TRU-BRACE
ANTI-CAMBER
SUPPORT
BRACING



With the automotive-like feel and maneuverability of the ZF™ Independent Front Suspension, you'll have the driving confidence and peace-of-mind that comes with knowing you can access the tightest spaces with minimal turns. Essentially, it feels similar to driving a car.

6" Roof at the Crown, Welded Aluminum Tube - Laminated Vacuum Bonded with Integrated A/C Ducting

- A** Framing is welded 2" aluminum tube
- B** 1/4" Luan top layer with 1 piece fiberglass
- C** 5-1/4" radius polystyrene insulation
- D** Galvanized metal backers for A/C's, satellite, solar panel and antenna

1-7/8 Thick Sidewall, Welded Aluminum Tube - Laminated Vacuum Bonded.

- E** 1/4" Luan backed fiberglass sidewall
- F** Heavy wall aluminum tube around perimeter and around slide openings
- G** 1-1/2" polystyrene insulation
- H** 1/8" interior décor finishing board

3-1/8" Floor, Vacuum Bonded Laminated

- I** Framing is welded 2-1/2" aluminum tube
- J** 2-1/2" polystyrene insulation
- K** 1-piece 1/2" structure board
- L** Core-8 waterproof composite underbelly

Fiberglass Molded Front and Rear Caps

- Q** 1-piece automotive grade bonded windshield
- R** Generator slide system

Full Paint Welded Steel Chassis Structure

- M** Tru-Brace, chassis stiffener system
- N** 1-piece aluminized steel side skirt
- O** 1-piece bent steel storage compartments
- P** 1-1/2" insulated steel tube firewall



Introducing the V-Ride™ Rear RV Suspension System from FCCC. As the first ever single axle suspension rated at 21,000 pounds and higher, it's designed for today's demanding luxury motorhome owners- who want the ability to carry more gear, the freedom to equip their interiors with premium amenities, and a comfortable, confident driving experience.



The standard UltraSteer I-Series features an independent suspension on the tag axle. This provides enhanced overall ride quality and stability, with comparable weight capacity and turning angle to the B-Series.

BERKSHIRE XLT DECOR OPTIONS

CUSTOMIZE YOUR INTERIOR

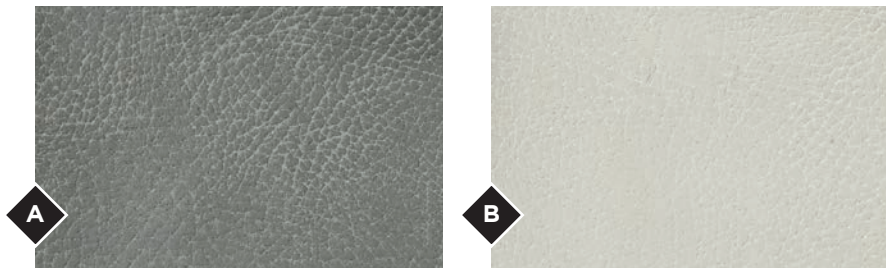
WOOD GRAIN OPTIONS (CHOOSE ONE)

- A Robust Cherry
- B Bronze Maple



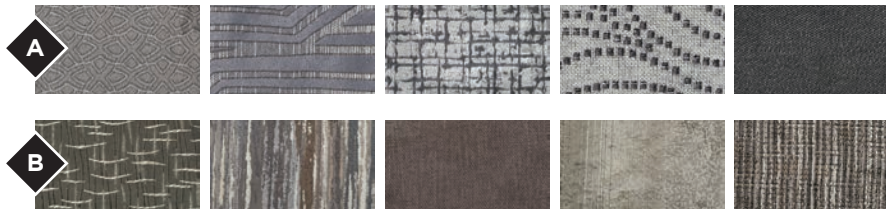
LEATHERETTE OPTIONS

- A Iron
- B Coyote



DESIGNER FABRIC OPTIONS

- A Mystic Fog
- B Seashore Glitz

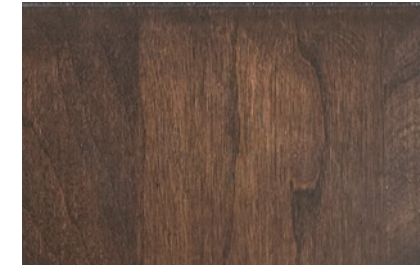


SURFACE OPTIONS

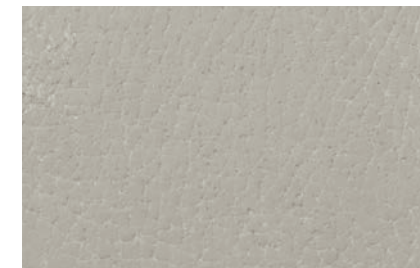
- A Standard Polished Porcelain Flooring
- B Matte Flooring Option
- C Standard Countertop



FIXED INTERIOR | White Diamond

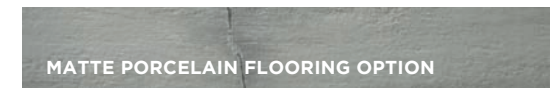


Executive
Dark Cherry
Wood Grain



Brisa
Leatherette

DESIGNER FABRICS

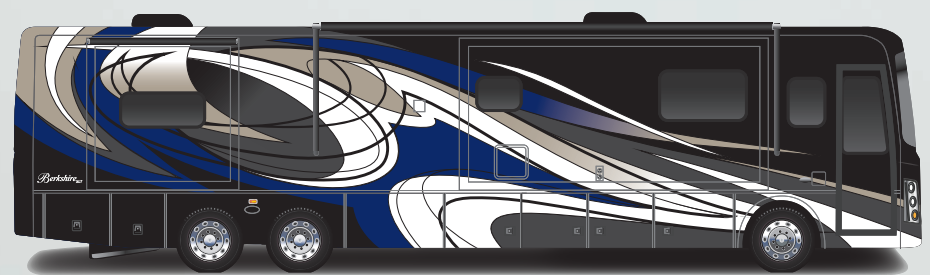




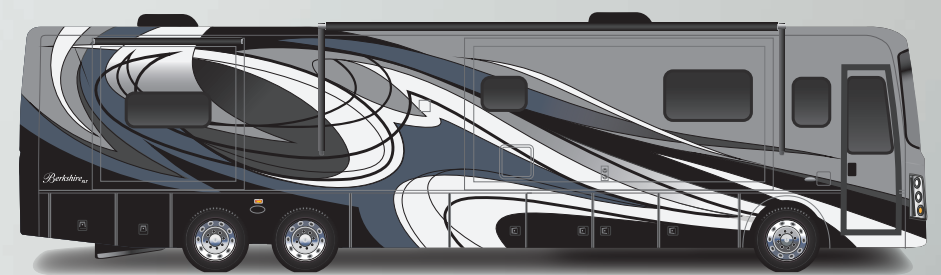
PAINT PACKAGES



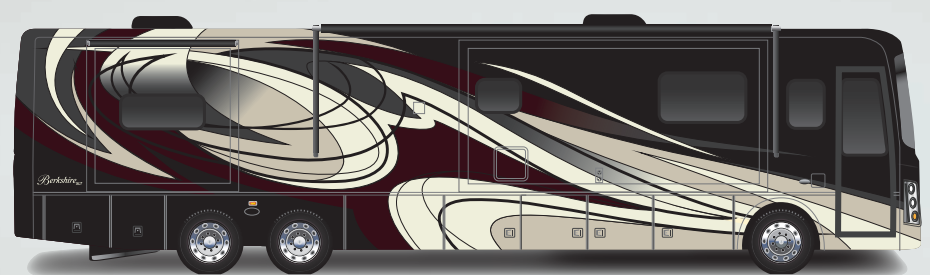
BERKSHIRE XLT
SHOWN IN OCEAN VIEW



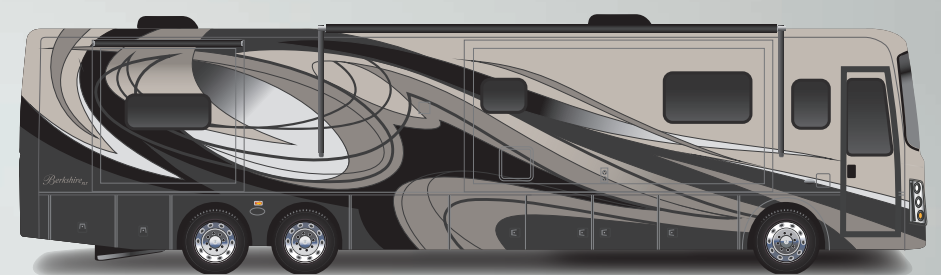
MALIBU



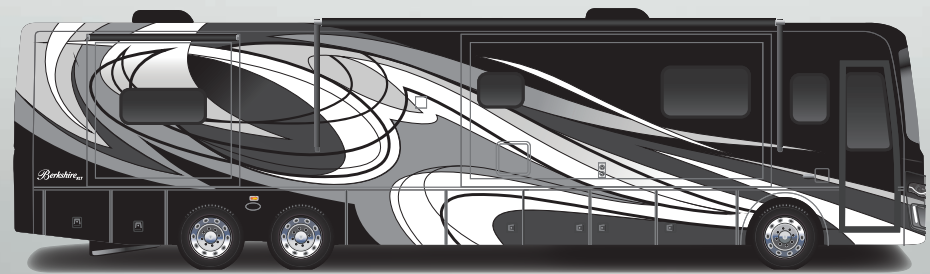
OCEAN VIEW



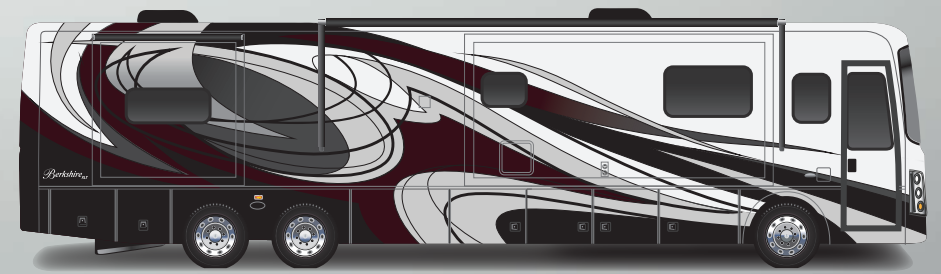
CRIMSON RED



CANTERBURY



SMOKEY GREY



SCARLET RED



STANDARDS AND OPTIONS

STANDARDS

Chassis

- + Freightliner XCR Raised Rail Chassis
- + Cummins ISL 450HP, 100RPM, 2200GOV RPM, 1250 LB/FT @ 1400RPM
- + Allison 3000MH 6-speed transmission
- + 120V Engine Heater 1000W
- + 22.5" Polished Aluminum Wheels
- + Michelin 315/80R22.5 Front, 295/80R22.5 Rear/Tag Tires
- + Trailer Hitch, 15,000 # Capacity
- + 150 gallon, locking dual fill fuel tank
- + Driver side remote fill, 15 Gallon DEF Tank
- + Day time running lights
- + 7-Pin tow power connector
- + 18.7 CFM air compressor
- + Farr Eco-air cleaner
- + Air filter restriction indicator
- + Fuel/water separator
- + Brake line Air Dryer w/Heater
- + Automatic, heated moisture ejectors
- + Heavy duty-windshield wipers w/intermittent function
- + 160 amp alternator
- + Full air ABS brakes w/ auto slack adjuster
- + Two (2) 1900 CCA at 0 degree Fahrenheit, maint. free
- + Jacobs compression brake
- + Suspension Neway (front & tag axles) & V-ride (rear axle)
- + Sachs custom tuned shock absorbers
- + Auto air suspension

- deflation system
- + Side radiator cooling package
- + Transmission oil cooler
- + 5 year / 100,000 mile coolant (some maintenance required)
- + Electronic cruise control w/ high idle
- + Independent front suspension, IFS
- + Ultra steer tag axle
- + Tire pressure Monitoring sytem (TPMS)

Construction and Exterior

- + Fiberglass front and rear caps
- + Full body painted exterior
- + Four (4) point fully auto hydraulic leveling system w/ auto air dump
- + Steel basement structure
- + Tru-Brace Anti Camber chassis support system
- + Rust resistant aluminized steel chassis skirts
- + Diamond shield front mask protective film
- + 1 Piece Fiberglass Roof
- + Top-mount remote mirrors w/heat, turn signal & sideview cameras
- + Frameless dual pane, dark tint windows
- + Automotive foam and Ziebart seal undercoating
- + Carefree power door awning
- + Carefree Latitude dual pitch patio awning w/ LED light & Wind Sensor
- + Carefree s/o topper w/covers
- + Full height strut assisted compartment doors w/ full pass through storage
- + "One Key" system, ext-compartment, entry

- door & fuel fill doors
- + Quiet integrated A/C intake/ducting roof system
- + Crowned and layered vacuum bonded fiberglass roof
- + Vacuum bonded 3" floor w/ tubular aluminum frame
- + Gel coat vacuum bonded sidewalls, s/o floors & walls
- + Block foam polystyrene insulation in walls, roof and floors
- + 30" Entryway
- + Channeled drains for A/Cs
- + Tube steel firewall w/ polystyrene insulation
- + Lighted exterior assist handle
- + 84" interior ceiling height
- + PTL steel entrance door with deadbolt
- + Auxiliary air chuck (front driverside compartment)
- + LED Headlights & Marker Lights
- + Full length mud flap w/ chrome Berkshire name
- + Slide tray in basement compartment

Electrical

- + All Electric Coach
- + 50A service w/auto transfer switch & 34' power cord reel
- + EZ power cord entry
- + 10kW Onan diesel generator w/manual slide tray
- + Energy management system
- + Electronic house power disconnect switch
- + Generator start/stop switch (On dash/bedroom)
- + Multi-plex w/Precision plex app control

- + Dimmer control lighting throughout
- + LED lighting package
- + Decorative bath, dinette & wall lights
- + Individual bed LED reading lights in overhead
- + 2800kW pure sine inverter/converter
- + Auto generator start control
- + (6) Six volt deep cycle house batteries
- + House Battery Distribution Center (HBC)
- + Chassis & house battery bank master shut off switches
- + LED porch & patio lights
- + Easy read 12v house/ Chassis load centers
- + Automotive chassis fuse panel (front driver side compartment)
- + Ceiling fan in bedroom
- + Kitchen & living room accent lighting
- + 100W solar panel w/ mppt controller

Plumbing

- + Variable speed 4GPM water pump
- + Individual zoned hot/cold manifold water supply system
- + 4-way water management valve in water bay compartment
- + Bath - solid surface under mount sink
- + Kitchen - Stainless steel under mount sink
- + Solid Surface shower walls, glass door, teakwood seat & skylight
- + Whole house water filter
- + Black water tank flush system
- + Kitchen single lever faucet w/ pull-out sprayer

- + Porcelain china bowl toilet w/foot flush (N/A 45B)
- + Clean-easy exterior shower hose
- + Convenience monitor panel in water bay door
- + 360 Roof vent caps
- + Tecma-macerator toilet (rear bath) (45B Applicable in 2 Bathrooms)

Driver/Passenger Cockpit

- + One piece windshield
- + Power front day/night shades
- + Passenger & driver window day/night shades
- + 3D Carbon fiber dash panels
- + Mobileye Collision Mitigation System
- + Optiview glass instrument panel
- + Steering wheel - w/radio audio, wipers, engine brake, cruise, adjustable pedals & transmission mode control
- + Auxiliary Fog lights
- + 10" Dash radio w/ color back-up and side view camera pkg w/Navigation
- + Sirius/XM satellite roof mounted antenna
- + Villa soft touch wide driver seat, swivel, recline seat w/6-Way pwr adj.
- + Villa soft touch wide passenger seat, swivel, recline & power foot rest
- + Driver/Passenger side consoles w/cupholders
- + Passenger seat workstation
- + Driver console wireless cellphone charger
- + Lighted step well
- + Two (2) Defroster fans w/ high and low settings

- + Automotive dash AC/ heater w/ deluxe controls
- + Multiple auxiliary/USB & 12V charging ports at dash
- + Power flush floor stepwell cover
- + Multiple entry assist handles
- + Driver & Passenger LED ceiling map lights
- + Emergency/aux engine start switch at dash
- + Fitted Cockpit floormat w/"Berkshire" logo
- + Fitted entryway step carpet mats
- + Keyless entry

Interior

- + Polished porcelain tile throughout
- + Semi gloss hardwood cabinetry w/glazing, interior doors & slideout fascia (Glazing N/A with executive dark cherry option)
- + Hardwood raised panel cabinet doors w/glazing
- + Front bed lift in cockpit
- + Hidden hinges and bar pull style cabinet hardware
- + Living room ceiling crown Trim
- + Carpeted slide-outs
- + Window valances
- + Hardwood valance legs
- + "Soft Touch" Dream booth dinette w/ storage underneath
- + Villa Ultrafab love seat (N/A 45A)
- + Villa Ultrafab hide-a-bed sofa
- + Polished solid surface kit/bath c-tops & backsplash w/tile inserts
- + Full extension ball bearing metal drawer guides throughout
- + Galley storage compartment for sink covers
- + Kitchen Pantry

- + Pull out kitchen counter top (N/A 45CA)
- + Bi-fold doors, bunk beds (N/A 45B)
- + "Soft Touch" padded ceiling
- + Roller style day/night shades
- + Dresser drawers and wardrobe bedroom cabinetry
- + 72"x 80" Serta king bed w/ bedspread and decorative pillows
- + Contoured overhead cabinets in slide rooms
- + Bed night stands, w/dual USB jack & overhead cabinetry
- + Mirrored vanity overhead cabinet doors
- + Towel bar, toilet Paper holder & towel ring
- + Living room ceiling feature
- + Electronic safe
- + Carbon monoxide & smoke detectors
- + Fire extinguisher

Appliances

- + (3)15,000 BTU A/C's (Front & Rear-w/heat pump)
- + Heated holding tank compartment
- + Aqua Hot hydronic heat w/ continuous flow hot water
- + GOLO Heat electric heated tile floors throughout
- + 30" OTR convection microwave oven
- + 23 cf French door residential refrigerator w/ice maker
- + Electric induction glass cook top
- + Power fan in bathroom w/rain cover
- + Maxxair in galley w/wireless remote control w/rain cover
- + Washer/dryer prep
- + Electric fireplace

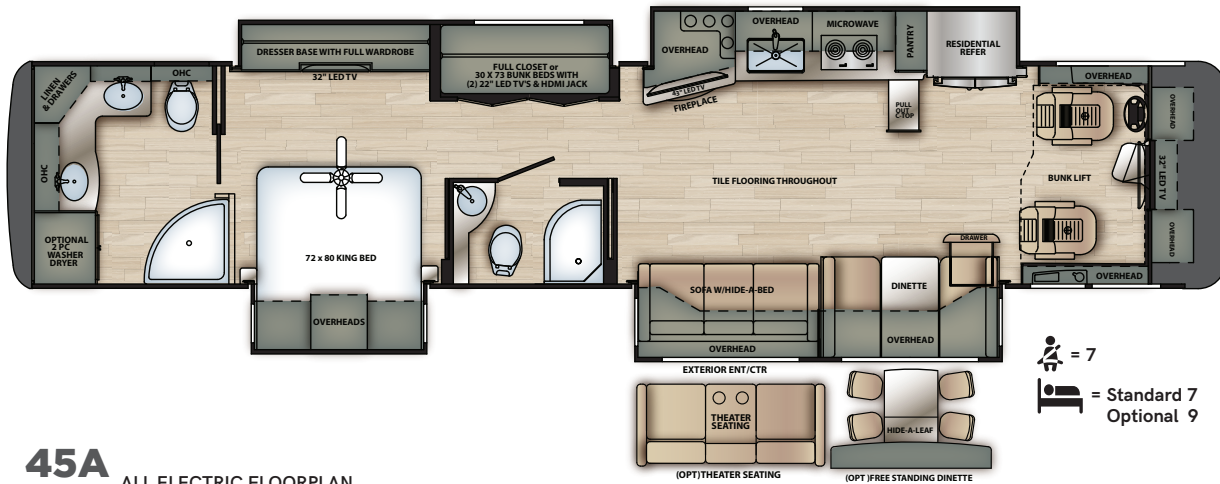
- + Central vacuum system

Entertainment

- + 49" LED TV, living room (N/A 45A)
- + 43" LED TV, living room (45A Only)
- + 43" LED TV exterior TV w/ bluetooth radio & speakers
- + 32" LED TV, bedroom
- + 32" LED TV in cockpit overhead
- + 22" LED TV, (2)each bunk w/ easy access HDMI jack (N/A 45B)
- + Bose Soundbar w/integrated sub & bluetooth
- + Roof mount Winegard Trav'ler satellite prep
- + Park/cable prep
- + High Definition Cat6 matrix signal distribution
- + Hi-Definition digital TV antenna Dash radio tuned amplifier system
- + Blu-ray DVD player
- + Auto WiFi extended range Falcon antenna & router

OPTIONS

- + Free standing dinette w/hutch and 4 chairs (N/A 45CA)
- + Theater seating IPO hide-a-bed sofa
- + Ceramic matte finish tile
- + Trav'ler (Winegard) satellite antenna- Dish Network TV (US)
- + Trav'ler (Winegard) satellite antenna- Shaw (Canada)
- + Stackable washer & dryer
- + Stainless steel dishwasher
- + Delete front bunk lift
- + Basement freezer with pull out tray

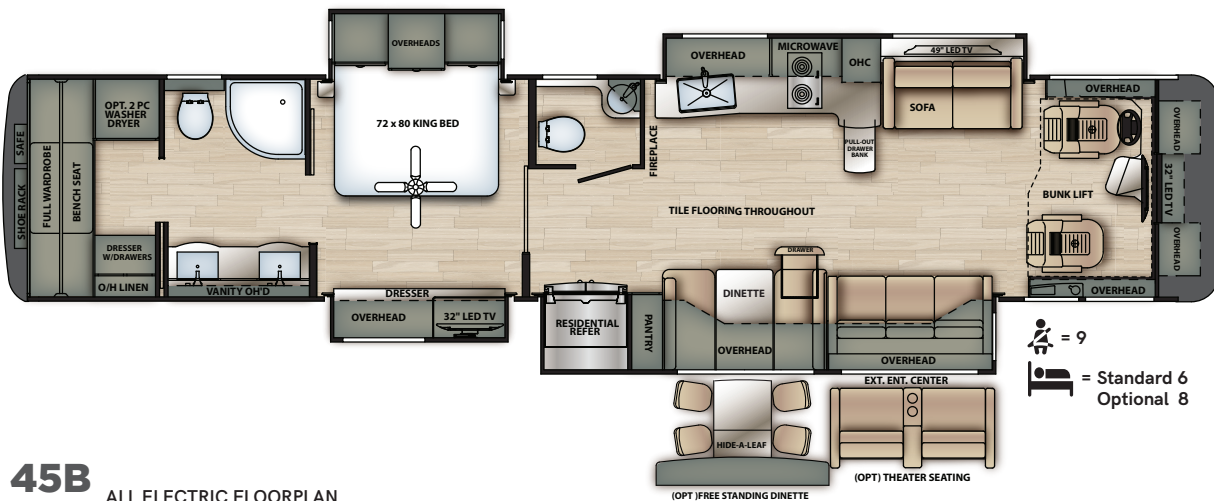


45A ALL ELECTRIC FLOORPLAN

- + 450HP w/ IFS, Side Radiator and Mobile Eye Collision Mitigation System
- + (2) Full Bathroom Bunkhouse/Oversize Wardrobe w/ Abundant Kitchen Counter Space
- + Individual Water Manifold Featuring Shower Miser Water Saver For Maximum Water Conservation Ideal For (2) Full Showers
- + 400D Aqua Hot, (6) 6v House Batteries, 2800w Inverter, Electric Heater Floors & Pre-Wired For Up To 550w Solar Capacity

45B ALL ELECTRIC FLOORPLAN

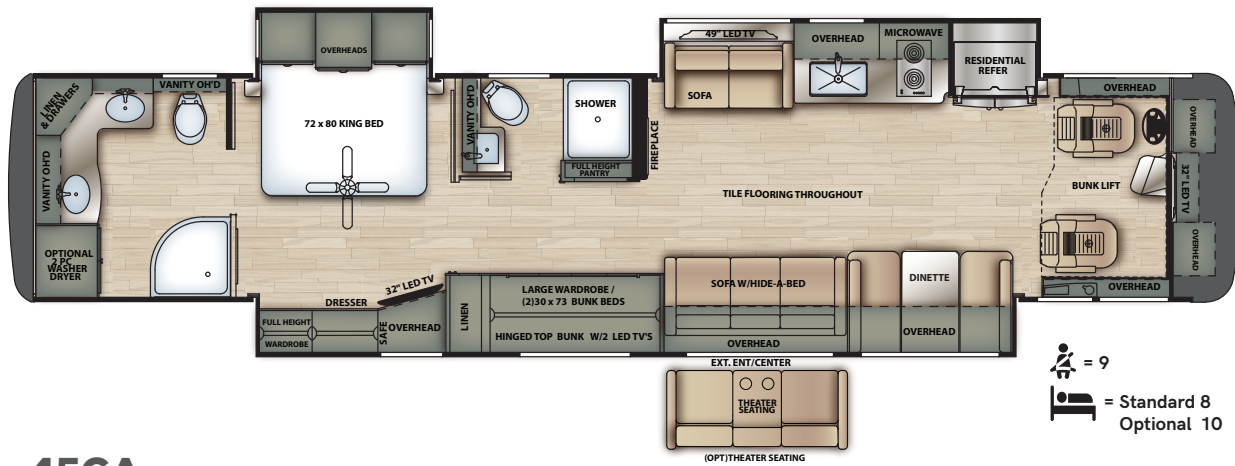
- + 450HP w/ IFS, Side Radiator and Mobile Eye Collision Mitigation System
- + Open Living Bath and A Half Floorplan w/ Spacious Living Room and Generous Kitchen Counter Space
- + Expansive Rear Bathroom w/ Walk In Wardrobe, Bench Seating and Ample Wardrobe Storage
- + 400D Aqua Hot, (6) 6v House Batteries, 2800w Inverter, Electric Heater Floors & Pre-Wired For Up To 550w Solar Capacity



	45A	45B
Length	44'11"	44'11"
GVWR (Lbs.)	47,000	47,000
GCWR (Lbs.)	62,000	62,000
GAWR Front (Lbs.)	17,000	17,000
GAWR Rear (Lbs.)	20,000	20,000
GAWR TAG (Lbs.)	10,000	10,000
Wheelbase	294"	294"
Height*	12' 9"	12' 9"
Width*	100"	100"
Basement Storage*	261 ft ³	261 ft ³
Awning	12'9"	16'3"
Fresh Tank*	103	103
Gray Tank	66 gal.	66 gal.
Black Tank	42 gal.	42 gal.
Hydronic Heat (BTU's)	65,600	65,600
Tankless Continuous Hot Water	S	S

*Fresh water tank includes quick drain valve



Please see back cover for more information regarding weights.



45CA

45CA ALL ELECTRIC FLOORPLAN

- + 450HP w/ IFS, Side Radiator and Mobile Eye Collision Mitigation System
- + (2) Full Bathroom Bunkhouse/ Oversize Wardrobe, Seatbelts For 9 and Copious Living Room Seating
- + Full Wall Hydraulic Camp Side Slide Out Featuring 18' Two Stage Awning with Motion Sensor
- + 400D Aqua Hot, (6) 6v House Batteries, 2800w Inverter, Electric Heater Floors & Pre-Wired For Up To 550w Solar Capacity

 = 9
 = Standard 8
 Optional 10

Length	44'11"
GVWR (Lbs.)	47,000
GCWR (Lbs.)	62,000
GAWR Front (Lbs.)	17,000
GAWR Rear (Lbs.)	20,000
GAWR TAG (Lbs.)	10,000
Wheelbase	294"
Height*	12'9"
Width*	100"
Basement Storage*	261 ft ³
Awning	18'0"
Fresh Tank*	103
Gray Tank	66 gal.
Black Tank	42 gal.
Hydronic Heat (BTU's)	65,600
Tankless Continuous Hot Water	S



*Fresh water tank includes quick drain valve
 Please see back cover for more information regarding weights.



GVWR (Gross Vehicle Weight Rating) - is the maximum permissible weight of the unit when fully loaded. It includes all weights, inclusive of all fluids, occupants, cargo, optional equipment and accessories. For safety and product performance do NOT exceed the GVWR.

GCWR (Gross Combined Weight Rating) - Is the maximum permissible loaded weight of your motor home and any towed trailer or towed vehicle. Actual GCWR of this vehicle may be limited by the sum of the GVWR and the installed hitch receiver maximum capacity rating; see hitch rating label for detail.

GAWR (Gross Axle Weight Rating) - is the maximum permissible weight, including cargo, fluids, optional equipment and accessories that can be safely supported by each axle.

UVW (Unloaded Vehicle Weight)* - is the typical weight of the unit as manufactured at the factory. It includes all weight at the unit's axle(s), including full fuel, all fluids and LP Gas. The UVW does not include cargo, fresh potable water, additional optional equipment or dealer installed accessories.

*Estimated Average based on standard build optional equipment.

CCC (Cargo Carrying Capacity)** - is the amount of weight available for fresh potable water, cargo, passengers, additional optional equipment and accessories. CCC is equal to GVWR minus UVW. Available CCC should accommodate fresh potable water (8.3 lbs per gallon). Before filling the fresh water tank, empty the black and gray tanks to provide for more cargo capacity.

** Estimated average based on standard build optional equipment.

Each Forest River RV is weighed at the manufacturing facility prior to shipping. A label identifying the unloaded vehicle weight of the actual unit and the cargo carrying capacity is applied to every Forest River RV prior to leaving our facilities.

The load capacity of your unit is designated by weight, not by volume, so you cannot necessarily use all available space when loading your unit.

Actual towing capacity is dependent upon your particular loading and towing circumstances, which includes the GVWR, GAWR and GCWR as well as adequate trailer brakes. Please refer to the Operator's Manual of your vehicle for further towing information.

All information contained in this brochure is believed to be accurate at the time of publication. However, during the model year, it may be necessary to make revisions and Forest River, Inc., reserves the right to make all such changes without notice, including prices, colors, materials, equipment and specifications as well as the addition of new models and the discontinuance of models shown in this brochure. Therefore, please consult with your Forest River dealer and confirm the existence of any materials, design or specifications that are material to your purchase decision.




PRE-DELIVERY INSPECTION FACILITY

20,000 square feet of quality assurance. The bare essentials for a premium product. This state-of-the-art facility gives immediate daily feedback to production for quality assurance in every unit built.

**24/7 EMERGENCY
ROADSIDE ASSISTANCE
WITH VEHICLE PURCHASE***

<p>TOWING JUMP-STARTS TIRE CHANGES FLUID DELIVERY LOCKOUT SERVICE</p>	<p>WINCH-OUT MOBILE MECHANIC TECHNICAL SUPPORT DEALER LOCATOR SERVICES</p>
-------------------------------------------------------------------------------------------	------------------------------------------------------------------------------------------------



**SAFERIDERV
MOTOR CLUB**

*VALID FOR 1 YEAR FROM DATE OF PURCHASE



www.ForestRiverBuyLocal.com



Learn More
Scan this barcode using a QR Reader on your smart phone to learn more about Forest River.



A Berkshire Hathaway company.

Forest River Diesel Division
1800 W. Hively Ave.
Elkhart, IN 46517
(574) 522-3693
www.forestriverinc.com
www.forestriveraccessories.com

FREE MEMBERSHIP
to Forest River Owners' Group

www.forestriverfrog.com

