

ZEPHYR

CLASS A







Clockwise from top: Cockpit; Kitchen Galley;
Steering Wheel and Digital Dashboard; Master Bed.
All interiors shown are 45 PZ with Linen Cabinets,
Shore Club décor.

2020 ZEPHYR

BEYOND EXTRAORDINARY

For those who seek the ultimate in RV luxury, look no further than the pinnacle of Tiffin's line-up — the magnificent 2020 Zephyr®. Designed to impress, this 45' solid-structured coach is Class A craftsmanship at its finest, perfected by Tiffin's experience in over four decades of building luxurious motorhomes.

Sitting on a PowerGlide® Chassis, everything about the Zephyr is beautiful to the eye and premium to the touch.



Main Living Area

The Zephyr's luxurious interior creates the perfect atmosphere for relaxed travel. The living areas redefine spaciousness, with 7' ceilings, four slide-outs, and 45' floor plan. Incredible attention to detail is on display everywhere, from the designer fabrics and plush furniture, to the handcrafted cabinetry and polished porcelain tile floor.

Left to right: Dinette; Living Area. All interiors shown are 45 PZ with Linen cabinets, Shore Club décor.





The cool brightness of LED lighting illuminates interiors, using a fraction of the energy of incandescent bulbs to preserve the coach's battery life.



Top to bottom: Passenger Side Sofa Bed;
Pilot Seat; Drive Side Theater Seats.



Master Suite

Enjoy total privacy in your grand master suite. Every comfort has been considered, with a king-sized memory foam mattress, vanity with built-in drawers, laundry center with stacked washer and dryer, and a walk-in wardrobe closet. For your convenience, the coach is equipped with two lavatories, allowing you to reserve the en suite bathroom for your private use.

Left to right: Bathroom Vanity, King Bed. All interiors shown are 45 PZ with Linen cabinets, Shore Club décor.





Tiffin-crafted solid wood cabinets, drawers, and closets add more storage than many larger-sized models.



Clockwise from top: Bathroom Sink; Stacked Washer/Dryer; Safe.

Kitchen

Outfitted with top-of-the-line appliances, this designer kitchen is ideal for a chef-on-the-go. Countertop space is generous, with an Expand-an-island to add more room for food prep. With an in-cabinet Keurig® coffee center with K-Cup storage or the optional built-in Wolf® coffee system, you'll have fuel for all of your adventures.

Left to right: Residential Refrigerator with optional Wolf Coffee Center and optional Beverage Center; Kitchen. All interiors shown are 45 PZ with Linen cabinets, Shore Club décor.





Top to bottom: Optional Wolf Coffee Center;
Optional Beverage Center.



Reflecting over four decades of innovation, Tiffin's exclusive, custom-built PowerGlide Chassis demonstrates our ongoing commitment to delivering a motorhome experience that's precisely engineered for durability, reliability, performance, and control wherever your journey takes you.

MULTIPLEX WIRING WITH DIAGNOSTICS

The PowerGlide's multiplexed electrical system, with auto-reset fuses and relays, uses less wiring and increases reliability, efficiency, and flexibility.

DYNAMOMETER TESTING

Our dynamometer testing simulates full power road testing, enabling us to better assess engine performance, cooling system function, and instrumentation.

POWERGLIDE CHASSIS WARRANTY

The PowerGlide carries a Tiffin-backed limited warranty for three years or 50,000 miles against defects in materials and workmanship.

HUCK-BOLTED CONSTRUCTION

Huck Bolts are precision engineered two-piece fasteners. Huck Bolts are vibration resistant and provide direct metal to metal contact when installed.

Floor Plan



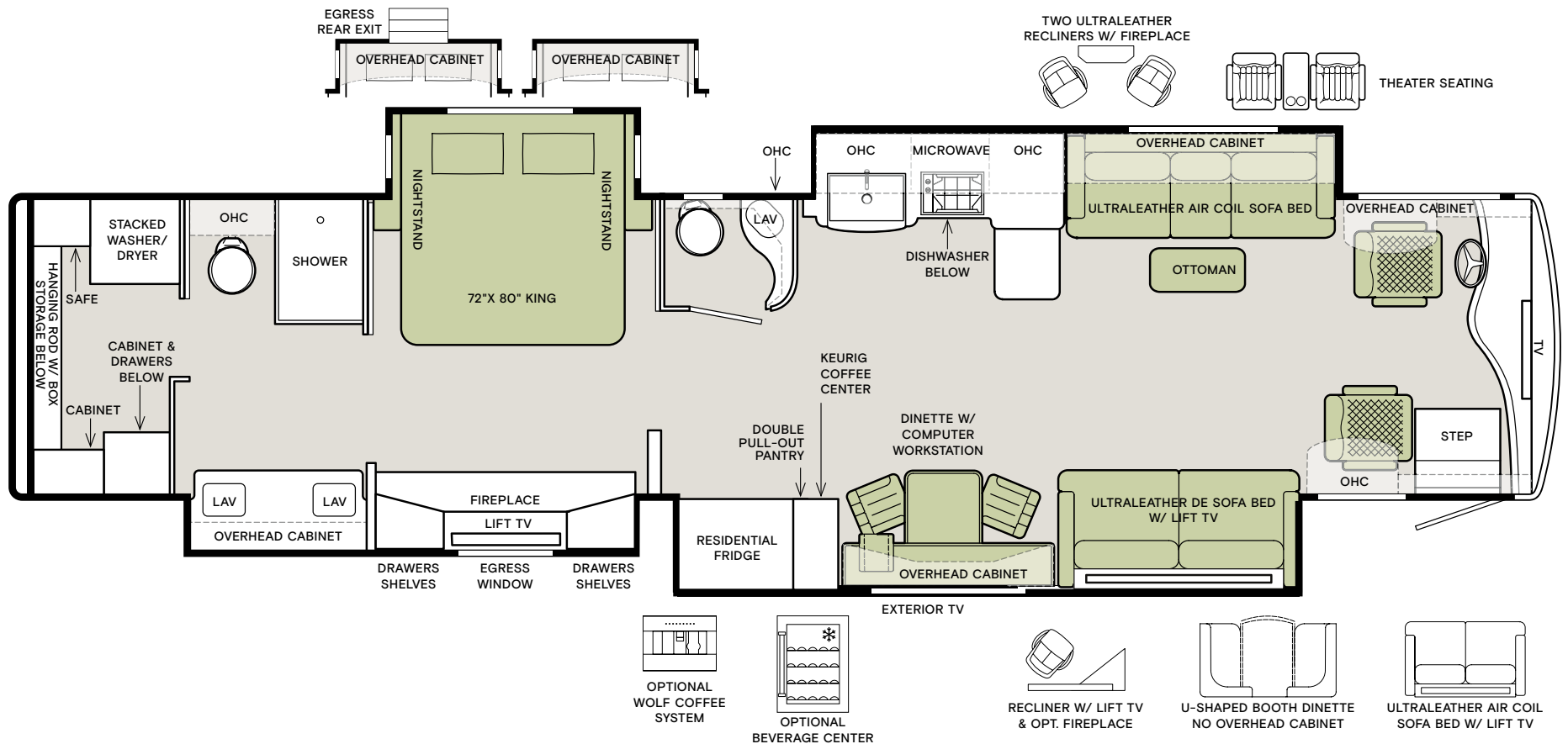
The design of the Zephyr floor plan must meet four essential criteria: Maximum space, Optimal organization, Relaxation plus, and Elegant atmosphere. Tiffin's MORE Plans offer your family the most comfortable layout for life on the road.

If optional furniture combinations are selected, window locations may vary from diagram shown.

All options may not be available in every model. Because of progressive improvements and specifications, standard and optional equipment are subject to change out notice or obligation.

For a complete and up-to-date list of available options and specifications, visit tiffinmotorhomes.com.

45 PZ



Premium Paint System

Our eight-step full-body paint system features premium grade paints sealed with three layers of superclear coat with ultraviolet protection. An additional layer of scratch-resistant plastic coating protects the front of the coach, stairwell, and entry door lock.



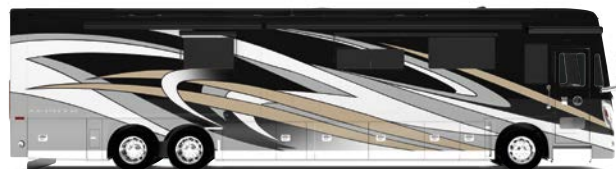
G8 CINDERWOOD



G8 FIRE OPAL



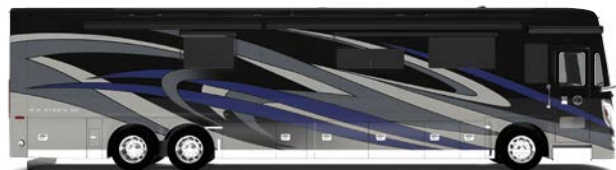
G8 FROSTED GRANITE



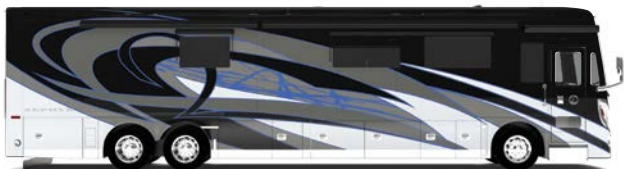
G8 MOON STONE



G8 RUSTIC CANYON



G8 WATERFALL



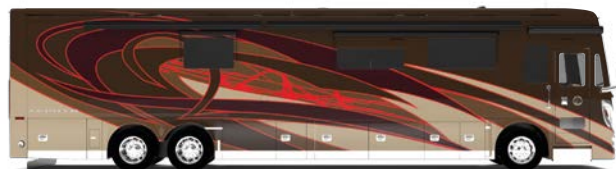
G9 COASTAL COBALT



G9 COPPER CARAMEL



G9 IRON SLATE



G9 LASER RED

Interior Décor

Make your experience on the road all your own. Express yourself by choosing the interior appointments such as cabinet finishes, flooring, and décor ensembles for every part of your motorhome. In the 2020 Zephyr, you'll be able to go in style no matter where you go.

CABINETS



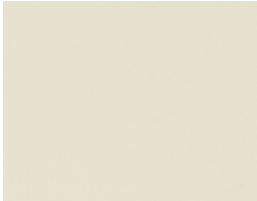
GLAZED CANYON CHERRY ¹



GLAZED HONEY NATURAL CHERRY ¹



GLAZED CHERRY ¹

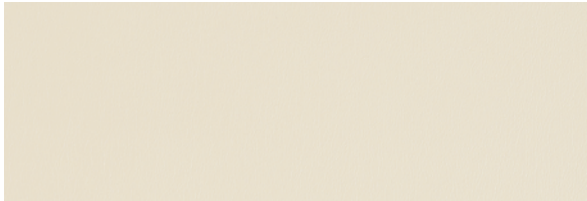


LINEN ¹



STERLING ¹

ULTRALEATHER



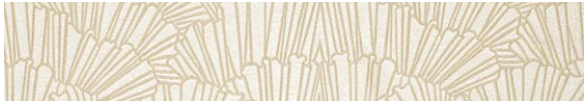
PRO PARFAIT

FLOOR TILE



NOON EMBER (S)

SHORE CLUB



WINDOW TREATMENT



BACKSPLASH



COUNTERTOP



LIVING ROOM



MASTER SUITE

Because of progressive improvements and specifications, standard and optional equipment are subject to change without notice or obligation. For a complete and up-to-date list of available options and specifications, visit tiffinmotorhomes.com.

¹ Luster Sheen is included on all cabinets.

Specifications

POWERGLIDE® CHASSIS

- Cummins ISX 605 HP/1950 lb Torque
- GVWR: 51,000 lb
- GAWR — Front: 17,000 lb
- GAWR: Rear: 21,000 lb
- GAWR: Tag Axle: 13,000 lb
- GCWR: 71,000 lb
- Alternator Amps: 280
- DEF Tank (gallons)¹: 15
- Wheel Base: 316"
- Tire Size: 315/80R22.5
- Fuel Tank (gallons): 150

AUTOMOTIVE

- Independent Front Suspension
- Allison 4000 MH Transmission
- Six Aluminum Wheels
- Two-stage Engine Brake
- VIP Smart Wheel
- Automatic Air Leveling System
- HWH — Hydraulic Leveling System
- Fog Lights
- Tru-Track Steering Tag Axle

STRUCTURAL

- Steel Cockpit Overhead Support Frame
- Seamless One-piece Gel-coat Fiberglass Molded Roof Cap
- One-piece Molded Gel-coat Fiberglass Front and Rear Caps with Integrated Air Intake
- Insulated Roof Duct Laminated into Roof Construction
- Steel Basement Construction

WEIGHTS & MEASURES

- Overall Length (approximate²): 44'11"
- Overall Height with Roof Air (maximum): 12'11"
- Overall Width: 101"
- Interior Height :83"
- Interior Width: 96"
- Basement Storage (cubic feet — approximate): 165
- Fresh Water (gallons): 90
- Black Water (gallons): 50
- Grey Water (gallons) : 70
- Minimum Garage Height: 14'
- Hitch Rating³: 20,000 lb Towing Capacity

EXTERIOR

- Combination Valid Air Leveling System with HWH Hydraulic Leveling Jacks
- One-piece Aluminum Face Swing-out Baggage Doors with Integrated Power Locks
- Pass-through Full Basement Storage
- Power Slide-out Storage Tray (Slides Out Both Sides)
- 12.5 kw Onan® Generator with Power Slide
- 120 V and 12 V Outlets Inside Storage Compartment
- Auto Generator Start System
- Six Battery — 900 Amp-hrs Extended Cycle Battery Bank
- Three 15 K Low Profile Roof ACs with Heat Pumps
- Solar Panel Prep
- Easy Hook-up Water Compartment with Built-in Hose Exits
- In-motion Satellite System⁴
- 360° View Camera System
- One-piece Panoramic Windshield
- Black Tank Flush System
- Water Filter
- Power Hose Reel
- Outside Shower
- Air Horn
- Recessed LED Docking Lights
- Porch Light
- Lighted Exterior Grab Handle
- Deadbolt Entrance Door Lock
- SeeLevel Tank Monitor at Dump Station
- Keyless Entry System (Includes Exterior Compartment Doors)
- Basement and Outside Compartment Lights
- Custom Mud Flap
- Electric Power Cord Reel
- Exterior TV (Included Sound Bar and Subwoofer)
- Power Window Awnings
- 2 Girard Power Awnings with Dual Pitch Feature
- Front Cap Protective Coating
- Flush Mounted and Painted-frame Dual Pane Windows
- Rearview Heated Mirrors with Integrated Side-view Cameras
- 2800 Watt Pure Sine Wave Inverter
- Under Coach Ground Effect Lighting
- Under Slide-out Ground Effect Lighting
- Solid Non-opening Window beside Passenger Seat
- Basement Freezer
- Pre-wired for Winegard Trav'ler Satellite
- Power TV Door

AVAILABLE OPTIONS

- Second Electric Slide-out Tray
- Three Solar Panels
- Six Solar Panels

COCKPIT

- Contemporary Wrap-around Dash
- Backlight Lettering for Dash Switches
- Built-in Driver and Passenger Consoles with Control Switches
- Ultraleather Six-way Power Driver and Passenger Seats
- Passenger Power Footrest
- Integrated Seat Belts
- Heated and Cooled Driver/Passenger Seat with Lumbar Support
- Tile Step Well with Recessed Lighting
- TV in Overhead Cockpit Area
- Built-in Storage Drawers in Dash
- Smart Wheel with Controls for ICC, Cruise and Windshield Wipers, High Beam/Low Beam, Stereo, and Radio
- In-dash Navigation System with Smart Wheel Controls
- USB Dash Receptacle
- Adjustable Accelerator and Brake Pedals
- Driver and Passenger Map Lights
- Power Solar/Privacy Windshield Shade
- Driver Side Insulated Power Window
- Driver/Passenger Side Power Solar/Privacy Shades
- Dual 12 V Outlets in Dash Area (Driver)
- Satellite Radio (requires subscription)
- Color Rear Vision Monitor System with Built-in Cameras and Mirrors
- Side-view Cameras Activated by Turn Signals
- 12 V Battery Power Disconnect
- Fire Extinguisher
- Advanced Monitor/JBL Sound
- Digital Dashboard Cluster
- Dash Cap featuring French Stitched Accent

All options may not be available on every model. Because of progressive improvements and specifications, standard and optional equipment are subject to change without notice or obligation. For a complete and up-to-date list of available options and specifications, visit tiffinmotorhomes.com.

For all information concerning the limited warranty provided by Tiffin, please refer to the full, written limited warranty set forth on the Tiffin website or held by our authorized dealerships.

¹ Diesel Exhaust Fluid (DEF) is the active component used in Selective Catalytic Reduction (SCR) engines to reduce nitrogen oxide emissions by 90% to meet EPA standards.

² The approximated coach width and length does not include side-view mirrors.

³ Tow ratings and ability are subject to gross combined weight ratings on the tow vehicle.

⁴ High-definition programming is not available on a domed satellite antenna unless you subscribe to DISH Network®.

INTERIOR

- Spyder Multiplex Coach Control System Featuring a 10" Main Monitor and Additional Conveniently Located Control Panels
 - 12 V Attic Fans
 - Recessed Doors and Drawers
 - Self-closing Ball Bearing Drawer Slides (Select Areas)
 - Heated Tile Floor
 - Padded Soft Touch Vinyl Ceiling
 - Power Solar/Privacy Shades with Wall Mounted Controls (Day and Night)
- Porcelain Tile Flooring Throughout Coach
 - Integrated Speakers
 - LED Lights
 - Ceiling Flush Mounted Multi-lighting System
 - 50 Amp Electrical Distribution
 - 12 V Breaker Panel
 - Energy Management System
 - Electric Step Well Cover
 - Smoke Alarm
 - GFI Outlets at Galley and Lavatories
- Interior Grab Handle at Entry Door
 - Entertainment System with Blu-ray™ Player
 - Complete Cable Wiring Interfacing with Surround Sound and Satellite Receiver
 - Hydronic Heating System with Continuous Hot Water
 - Central Vacuum Cleaner System with VacPan
 - SeeLevel Interior Tank Monitor
 - All-electric Coach
 - Extraordinaire™ AC System
 - Stacked Washer/Dryer

INTERIOR OPTIONS

- CABINETS**

 - Luster Sheen Cabinet Finish
- CABINET OPTIONS**

 - Glazed Canyon Cherry Cabinet Doors and Drawer Fronts
 - Glazed Cherry Natural Honey Doors and Drawer Fronts
 - Glazed Cherry Cabinet Doors and Drawer Fronts
 - Linen Cabinet Doors and Drawer Fronts
 - Sterling Cabinet Doors and Drawer Fronts
 - Standard Cabinet Finish
- FABRIC SUITES**

 - Shore Club
- ULTRALEATHERS**

 - Pro Parfait
- FLOOR TILE**

 - Noon Ember Floor Tile

LIVING AREA / DINETTE

- Dinette with Computer Work Station on Passenger Side
 - Contemporary Ceiling
 - Home Theater Surround Sound System with Blu-ray Player
 - Decorative Wall and Dinette Lighting Package
 - Carbon Monoxide Detector
- Ultraleather DE Sofa Bed with Lift TV on Passenger Side
 - Ultraleather Air Coil Hide-a-Bed Sofa on Driver Side
- AVAILABLE OPTIONS**

 - Ultraleather Air Coil Sofa Bed with Lift TV on Passenger Side
 - Ultraleather U-shaped Booth Dinette on Passenger Side
 - Theater Seating on Driver Side
 - (2) Luxury Recliners w/ Fireplace on Driver Side
 - Recliner with Lift TV/Fireplace on Passenger Side

KITCHEN

- Solid Surface Countertops and Splash Guards
 - Residential Stainless Steel Refrigerator w/ Wood Panels
 - Keurig Coffee Center
- Stainless Steel Convection Microwave with Exterior Venting
 - Power Solar/Privacy Shades
 - Built-in Soap Dispenser
 - Drawer-type Dishwasher
 - Wolf Cooktop
- Under Sink Pull-out Utility Box
 - Galley Panoramic Window
- AVAILABLE OPTIONS**

 - Wolf Coffee Center
 - Beverage Center

BEDROOM

- Bedroom Lift TV with Fireplace
 - Memory Foam King Mattress (72" x 80")
 - Under Bed Storage
 - Ceiling Fan
 - Blu-ray DVD System and Satellite Receiver
- Vanity with Built-in Drawers
 - Decorative Solid Wood Ceiling Ring
 - Security Safe
- AVAILABLE OPTIONS**

 - Power Smart King Bed Mattress (72" x 80")
 - Rear Egress Door (includes Overhead Cabinet)
 - Delete Bed Overhead Cabinet (includes Window)

BATHROOM

- Two Lavatory Sinks
 - Dual Medicine Cabinets
 - Elongated Ceramic Toilet with Electric Flush
 - Towel Holders and Lavatory Accessories Package
- Decorative Pocket Doors
 - Stacked Washer/Dryer in Rear Wardrobe
 - Laundry Center with Storage and Drawers in Rear Wardrobe
 - Skylight in Shower and LED Light
- Hand Held Shower with On/Off Switch
 - Solid Surface Shower Walls with Inlaid Tile and Residential Glass Door



1

YEAR*
LIMITED WARRANTY

5

YEAR** DELAMINATION
LIMITED WARRANTY

10

YEAR** CONSTRUCTION
LIMITED WARRANTY

1

YEAR COACH
ROADSIDE SERVICE

∞

ONGOING
CUSTOMER SUPPORT

©2020 Tiffin Motorhomes, Inc. Allegro®, Allegro Breeze®, Allegro RED®, Phaeton®, Allegro Bus®, Zephyr®, Wayfarer®, Roughing It Smoothly®, Open Road®, PowerGlide®, and Pusher® are registered trademarks of Tiffin Motorhomes, Inc. All rights reserved.
For all information concerning the limited warranty provided by Tiffin, please refer to the full written limited warranty set forth on the Tiffin website or held by our authorized dealerships. Please note, some interior furnishings not included.
* or 12,000 miles. ** Or 50,000 miles.

FOR PARTS & SERVICE CALL 256.356.0261 OR VISIT TIFFINMOTORHOMES.COM

105 2ND ST NW RED BAY, AL 35582 [f](#) [t](#) [i](#) [p](#)