

More ways to make  
yourself at home.



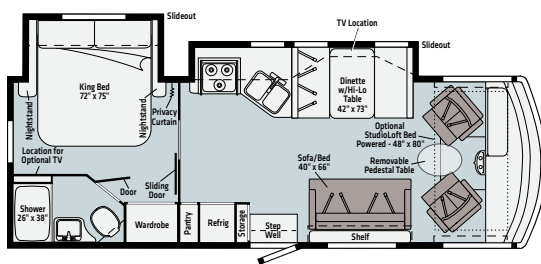
# VISTA

QUALITY INNOVATION SERVICE

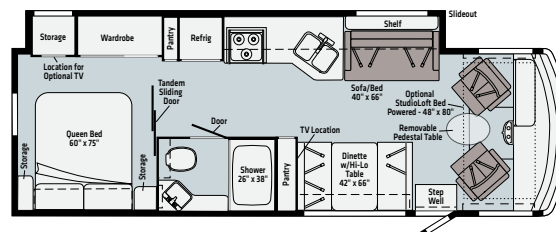
## Expands Horizons while Bringing Families Together

- **FLEXIBLE ENTERTAINING** With five slideout-equipped floorplans available in three new interior colorways, you'll find a Vista perfect for you and your family.
- **TRANSFORMATIVE INTERIOR** The spacious lounge is an ideal gathering place that easily converts to sleeping space. Generous Primera® covered seating (including swivel cab seats) offers the perfect platform for dining, hobbies and games. And the available powered StudioLoft™ bed, and bunk beds on the 31B, add to your overnight options.
- **OUTDOOR FRONT ROW** Add the available exterior entertainment center with 32" HDTV (39" HDTV on the 29V) and speakers to transform the outdoors into additional living space.
- **CHARGE UP** With USB ports strategically placed in nightstands, dining area, and near driver/passenger seats, your portable devices will be ready for any adventure as well.
- **CONTROLLED ENVIRONMENT** Efficient comfort is made simple through two optional 13.5 High Efficiency, Low Profile A/Cs (35U Standard), managed by a programmable thermostat. Additionally, an aftermarket solar panel installation and battery charger is available via a rooftop three-way solar plug-ready port, and a single port in the electrical service bay – allowing for added power up to 450 watts.

**WINNEBAGO**



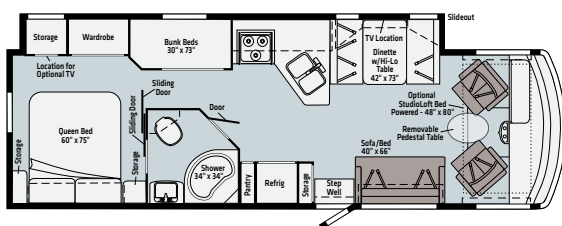
**27P**



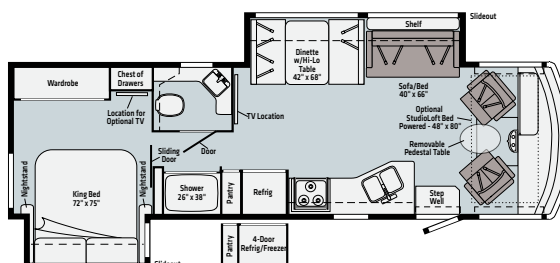
**29V**

Primera

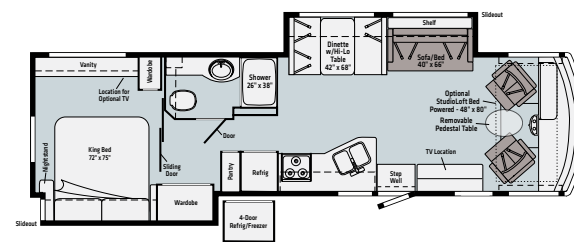
Vinyl



**31B**



**32Y**



**35U**

## WEIGHTS | MEASURES

	<b>27P</b>	<b>29V</b>	<b>31B</b>	<b>32Y</b>	<b>35U</b>
Length	28'5"	30'	31'2"	31'9"	35'0"
Exterior Height <sup>1</sup>	12'	12'	12'2"	12'1"	12'1"
Exterior Width <sup>2</sup>	8'5.5"	8'5.5"	8'5.5"	8'5.5"	8'5.5"
Exterior Storage <sup>3</sup> (cu. ft.)	133	147	139	123	134
Awning Length	19'	17'	19'	17'	16'
Interior Height	6'8"	6'8"	6'8"	6'8"	6'8"
Interior Width	8'0.5"	8'0.5"	8'0.5"	8'0.5"	8'0.5"
Freshwater Tank Capacity <sup>4</sup> (gal.)	51	70	70	64	74
Water Heater Capacity (gal.)	6	6	6	6	6
Holding Tank Capacity - Black/Gray <sup>4</sup> (gal.)	50/45	40/61	43/59	41/57	41/57
LP Capacity <sup>5</sup> (lbs.)	76.14	76.14	76.14	76.14	76.14
Fuel Capacity (gal.)	80	80	80	80	80
GCWR <sup>6</sup> (lbs.)	23,000	23,000	23,000	23,000	26,000
GVWR (lbs.)	16,000	18,000	18,000	18,000	22,000
GAWR - Front (lbs.)	6,500	7,000	7,000	7,000	8,000
GAWR - Rear (lbs.)	11,000	12,000	12,000	12,000	15,000
Wheelbase	178"	190"	208"	208"	228"

**Note:** Dimensions shown are for sleeping and shower space only and may vary due to styling differences.

- The height of each model is measured to the top of the tallest standard feature and is based on the curb weight of a typically equipped unit. The actual height of our vehicle may vary by several inches depending on chassis or equipment variations. Please contact your dealer for further information.
- Floorplans feature a wide-body design - over 96-inches. In making your purchase decision, you should be aware that some states restrict access on some or all state roads to 96-inches in body width. Before making your purchase decision, you should confirm the road usage laws in the states of interest to you.
- The load capacity of your motorhome is designated by weight, not by volume, so you cannot necessarily use all available space when loading your motorhome.
- Capacities are based on measurements prior to tank installation. Slight capacity variations can result due to installation applications.
- Capacities shown are tank manufacturer's listed water capacity (W.C.). Actual filled LP capacity is 80% of listing due to overfilling prevention device on tank.
- Actual towing capacity is dependent on your particular loading and towing circumstances which includes the GVWR, GAWR and GCWR, as well as adequate trailer brakes. Please refer to the Operator's Manual of your vehicle for further towing information.

Because features, specifications, equipment, and options may vary from those highlighted in this brochure, the buyer is responsible for confirming with the dealer the features, specifications, equipment, and options included on their specific vehicle. In addition, Winnebago's program of continuous product improvement may result in changes to vehicle specifications, equipment, model availability, and price without notice.