

# AMERICAN DREAM

CLASS A DIESEL



MODEL YEAR 2020



## TOP FEATURES

- Exclusive Liberty/Freightliner Chassis® w/60 Degree Wheel Cut & Independent Front Suspension (IFS)  
42V — 450HP  
45A — 605HP
- UltraSteer® B-Series w/Passive Steer on Tag Axle
- Push Button Start
- Auto Headlights
- AGM Batteries (6)
- 20K Hitch (45A)
- 12.5k Generator
- Additional Freshwater (+5 Gallon | 45A)
- LCD Dash Display w/ 10" Monitors
- HWH Floor Slide System and Leveling Jacks
- Power Cockpit Shades & Blinds
- Firefly™ Integrations Electronic Control System w/Multiplex Wiring
- Aqua-Hot® 450D Heating System
- Zone Electric Tile Heated Flooring (2)
- Full Tile Shower
- Samsung Appliances  
Refrigerator, Microwave, Washer/Dryer
- Samsung A/V
- CPAP Machine Storage Area Over Bed
- Articulating Wolf Bed
- Roof Mounted Awning  
(Second Awning Optional)
- Emergency Exit Door (Optional)
- Undercarriage LED Lighting
- Power Generator Slide
- Technology Package  
(JBL® Audio Package, Wifi Ranger, Cell Booster, 265W Solar Panel and Mobile Eye)

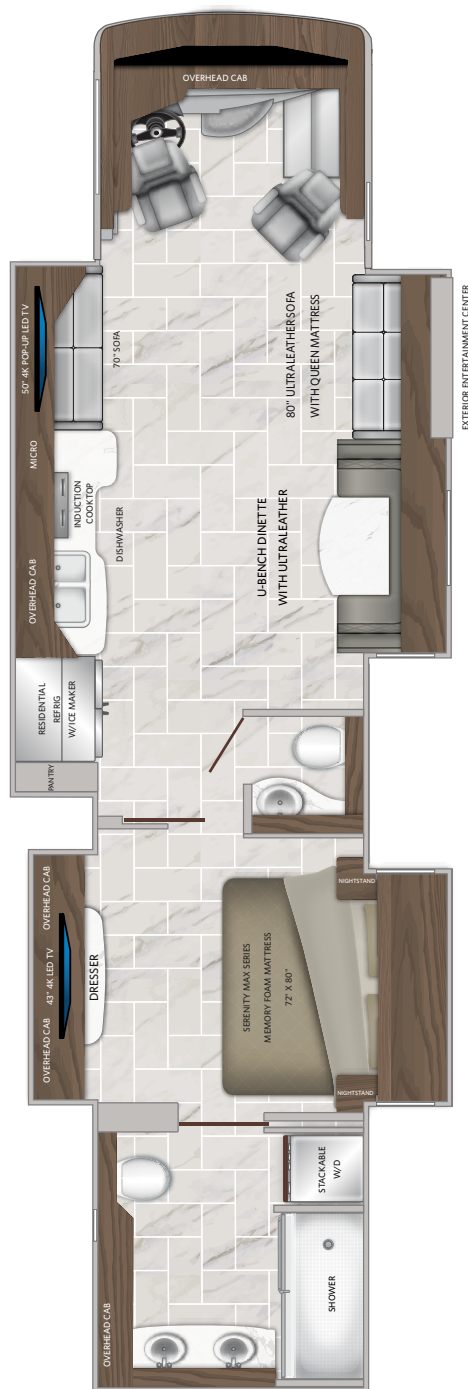
THE HEART OF LUXURY. THE SOUL OF FREEDOM.

42V

45A

- Three Distinctive Stylized Interior Décor Choices:
  - Luxe Truffle
  - Rockport Greige
  - Moon Haze
- Handcrafted Hardwood Cabinetry Available in Distinctive Color Finishes:
  - Magestic Chestnut
  - Cognac
  - Dorian Gray\*

\*Limited to Luxe Truffle  
and Moon Haze Interiors



42V — 450HP

45A — 605HP

AMERICAN DREAM  
EXTERIORS



BLACK STONE



INSPIRATION



TITANIUM



VOLCANO GREY

Product information, photography and illustrations included in this publication were as accurate as possible at the time of printing. For further product information and changes, please visit our website at [www.americancoach.com](http://www.americancoach.com) or contact your local American Coach dealer. Prices, materials, design and specifications are subject to change without notice. All weights, fuel, liquid capacities and dimensions are approximate. American Coach has designed its recreational vehicles to provide a variety of uses for its customers. Each vehicle features optimal seating, sleeping, storage and fluid capacities. The user is responsible for selecting the proper combination of loads (i.e., occupants, equipment, fluids, cargo, etc.) to ensure that the vehicle's capacities are not exceeded.