



Lantern

No matter where or why you travel, there's always something to be found, so why not get the most out of every camping experience. Coleman branded floorplans are loaded with added value and innovative features yet light on weight.

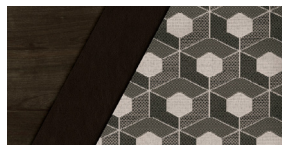
Features in Coleman

- **Power Plus Package** - an all around easy-to-use system that makes setting up and tearing down a breeze with a Power Awning w/LED lights, Power Stabilizer Jacks and a Power Tongue Jack.
- **Technology Package** - get to your campsite while having all the comforts. All Coleman Lanterns are equipped with Solar Prep, Backup Camera Prep, and Bluetooth capable stereo.
- **Solid Entry Step** - stability you need when coming and going from your Coleman. Easy to expand and store away, these aluminum steps deliver a sound platform.

EXTERIOR (N/A Single Axle Units)

- Backup Camera Prep
- Mega Pass Thru Storage Compartment w/ Magnetic Catches
- Solar Power Prep
- Diamond Plate Rock Guard
- Power Awning
- Power Tongue Jack
- Power Stabilizer Jacks
- 30 Amp Power Cord
- 50 Amp Power Cord (select models)
- 13,500 BTU Air Conditioner
- Exterior Shower
- Friction Hinge Entry Door

INTERIOR DECOR



Ironwood

INTERIOR

- Residential Queen Bed
- Upgraded Beauflor Lino
- Dual Row LED Interior Lighting
- Seamless Countertops (Lantern only)
- Foot Flush Toilet
- WiFi Prep
- 3 Burner Range w/17" Oven and Glass Cover
- 6 Gal. Gas Water Heater w/DSI
- High Output Furnace
- Large Single Bowl Farm Sink w/High Rise Faucet
- Range Hood w/Light and Exhaust Fan
- Pleated Night Shades – Living Area & Bedroom
- AM/FM/CD/AUX Stereo 2 Zone Stereo w/USB
- Fireplace w/5K BTU Heater (Lantern only)
- Bedroom Pocket Doors (floorplan specific)



LANTERN SERIES



LANTERN 244BH
Length: 27' 7" Weight: 5,541 lbs. Sleeps: 4-6
Hitch: 648 lbs. Height: 11'1"



LANTERN 263BH
Length: 30' 7" Weight: 6,129 lbs. Sleeps: 4-6
Hitch: 800 lbs. Height: 11'1"



LANTERN 264RL
Length: 30' 11" Weight: 6,152 lbs. Sleeps: 2-4
Hitch: 753 lbs. Height: 11'3"



LANTERN 285BH
Length: 32' 9" Weight: 6,620 lbs. Sleeps: 4-8
Hitch: 869 lbs. Height: 11'2"



LANTERN 286RK
Length: 32' 11" Weight: 6,396 lbs. Sleeps: 2-4
Hitch: 708 lbs. Height: 11'3"



LANTERN 295QB
Length: 32' 8" Weight: 6,281 lbs. Sleeps: 4-8
Hitch: 821 lbs. Height: 11'4"



LANTERN 334BH
Length: 37' 3" Weight: 8,018 lbs. Sleeps: 4-8
Hitch: 1,062 lbs. Height: 11'4"



LANTERN 337BH
Length: 37' 11" Weight: 8,493 lbs. Sleeps: 4-8
Hitch: 1,083 lbs. Height: 11'4"

LANTERN LT SERIES

COMING SOON



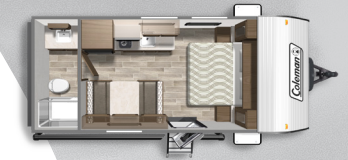
LANTERN LT 17B
Length: TBD Weight: TBD Sleeps: TBD
Hitch: TBD Height: TBD



LANTERN LT 17RD
Length: 21' 2" Weight: 3,136 lbs. Sleeps: 2-4
Hitch: 467 lbs. Height: 11'4"



LANTERN LT 18FQ
Length: 22' 9" Weight: 3,980 lbs. Sleeps: 2-4
Hitch: 458 lbs. Height: 10'1"



LANTERN LT 18RB
Length: 22' 5" Weight: 3,111 lbs. Sleeps: 2-4
Hitch: 434 lbs. Height: 9'9"



LANTERN LT 202RD
Length: 24' 11" Weight: 4,278 lbs. Sleeps: 2-4
Hitch: 586 lbs. Height: 10'10"



LANTERN LT 215BH
Length: 25' 11" Weight: 4,510 lbs. Sleeps: 4-8
Hitch: 552 lbs. Height: 10'7"



LANTERN LT 262BH
Length: 28' 7" Weight: 5,896 lbs. Sleeps: 4-8
Hitch: 752 lbs. Height: 11'4"



LANTERN LT 274BH
Length: 30' 7" Weight: 4,789 lbs. Sleeps: 4-8
Hitch: 582 lbs. Height: 10'4"

LANTERN TOY HAULERS



LANTERN TOY HAULER 250TQ
Length: 29' 7" Weight: 5,569 lbs. Sleeps: 4-8
Hitch: 909 lbs. Height: 11'5"



LANTERN TOY HAULER 300TQ
Length: 34' 10" Weight: 6,712 lbs. Sleeps: 4-8
Hitch: 998 lbs. Height: 12'4"

Garage Features

- 1,600-lb. Rated Rear Ramp Door
- Maximized Storage Flat Floors
- 2,500-lb. Rated Recessed D-Rings

Standard Features In Every Floor Plan

N/A Single Axles

POWER PLUS PACKAGE



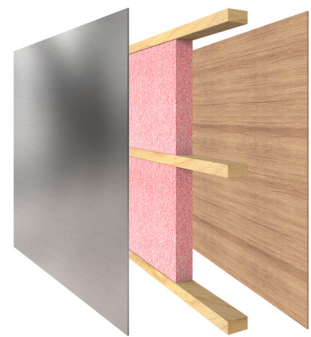
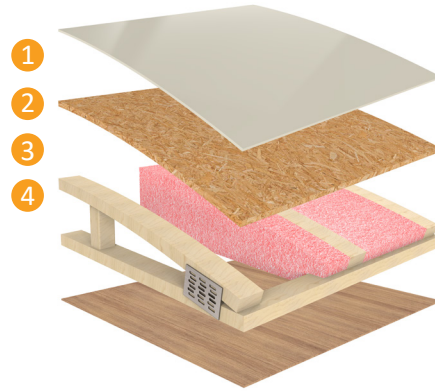
i To learn more visit our website dutchmen.com



DUTCHMEN® CONSTRUCTION ADVANTAGE

Durable Roof Structure

- 1 TPO Roof
- 2 3/8" Decking
- 3 Fiberglass Insulation
- 4 Lauan Interior Panel



Insulated Structure

- 1 Metal Exterior Panel
- 2 Wood Frame with R7 Thermal Insulation
- 3 Lauan Interior Panel

MORE STANDARD FEATURES MORE VALUE

Dutchmen RVs turn more heads on the lot and in the campground than any other. Why? While other manufacturers offer features as options, Dutchmen tends to make those same features standard. Call it “bang for the buck,” “more for your money,” or simply “more value.” We’ve built a reputation for bringing RV owners more standard features for less money for more than 25 years . . . and it’s a reputation we plan to keep.



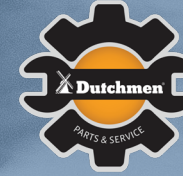
100% PRE-DELIVERY INSPECTION

At Dutchmen, quality is standard. Every single Dutchmen RV that comes off the line receives it’s own pre-delivery inspection. Every unit undergoes a thorough 253-point check to ensure accurate measurements, fully-functional electronics and components.



THE INDUSTRY'S BEST RV WARRANTY

With this industry-best warranty, we take the guessing game out of what is and isn’t covered. So, that means you don’t have to wrangle over the details, because we deliver value by clearly outlining the major components we back during the first three years.



THE LEADER IN PARTS AND SERVICE

Replacement parts. Routine checkups. Expert advice. You name it and we’ve got it covered. When only the best RV services will suffice, our industry-leading parts and service department is ready to help you get back on the road - and stay there longer than ever before.

*Length is defined as the distance from the centerline of hitch pin/coupler to rear bumper of trailer. **Our weights represent how most units are built, inclusive of many commonly-ordered options. ***Fresh water capacity includes water heater capacity.

DISCLAIMER: Product information is as accurate as possible as of the date of brochure publication. All features, floor plans and specifications in this brochure are subject to change without notice. Please consult Dutchmen’s website at www.Dutchmen.com for current product information and specifications. Tow Vehicle Disclaimer. CAUTION: Owners of Dutchmen recreational vehicles are solely responsible for the selection and proper use of tow vehicles. All customers should consult with a motor vehicle manufacturer or their dealer concerning the purchase and use of suitable tow vehicles for Dutchmen products. Dutchmen disclaims any liability or damages suffered as a result of the selection, operation, use or misuse of a tow vehicle. DUTCHMEN’S LIMITED WARRANTY DOES NOT COVER DAMAGE TO THE RECREATIONAL VEHICLE OR THE TOW VEHICLE AS A RESULT OF THE SELECTION, OPERATION, USE OR MISUSE OF THE TOW VEHICLE. REFERENCE DUTCHMEN MANUFACTURING OWNERS MANUAL FOR LIMITED WARRANTY DETAILS. © 2020 Dutchmen 1-24-2020-Coleman-Lantern-Printed in U.S.A



Lantern



INCLUDING THE

LANTERN LT SERIES

Travel Trailers & Travel Trailer Toy Haulers



Dutchmen
Legendary Innovation. Trailblazing Value.

PO BOX 2000 | 2164 CARAGANA COURT | GOSHEN, IN 46527 | SALES 574.537.0600

www.dutchmen.com

Visit us online to see all the Dutchmen brands, innovative models and spacious floor plans.

