

2020 PARK MODELS

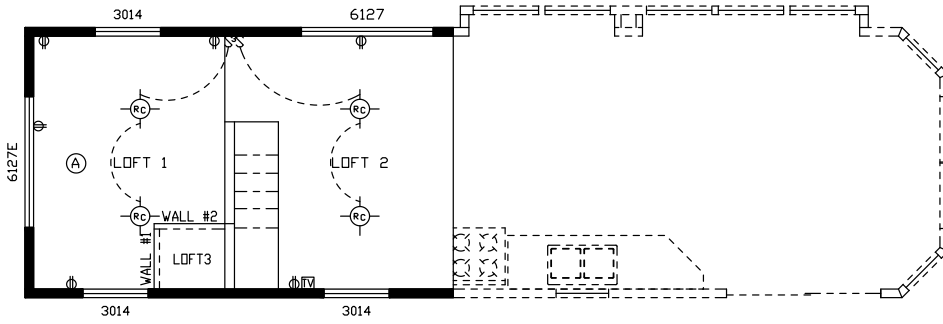
COUNTRY MANOR



JUST PARK IT

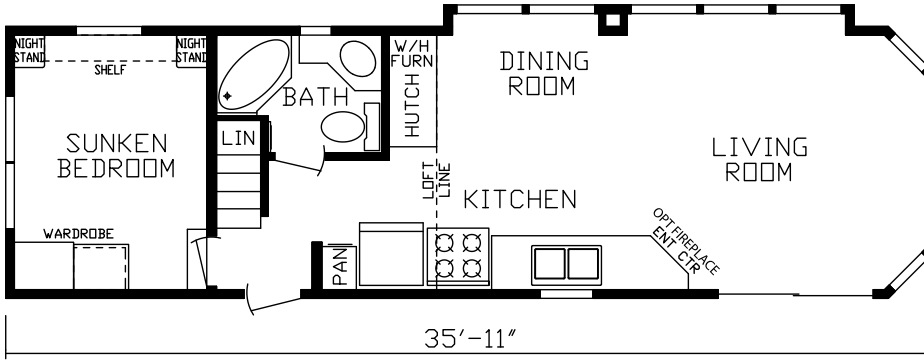
"Build Your Own Unit" at fairmontparkmodels.com

Model # 100169 Loft



**PRO-243
Optional
Living
Room**

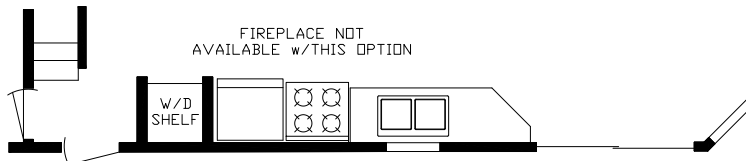
LIVING ROOM



Cottage Slate Cabinetry



Model # 100169 (also available as a flat bedroom floor - Model #100174)

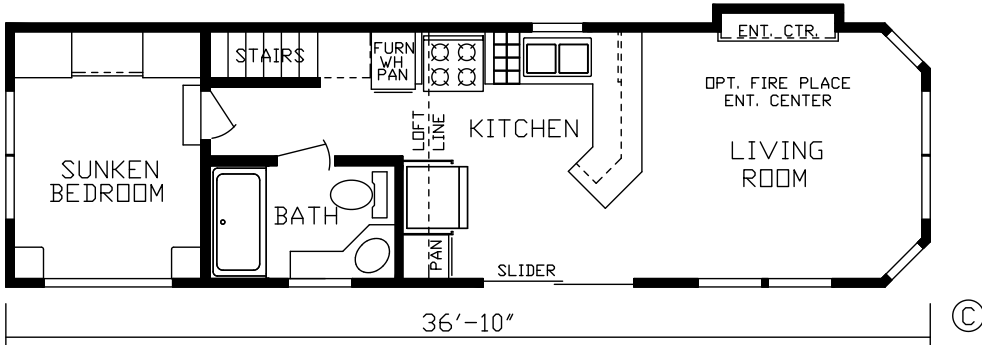
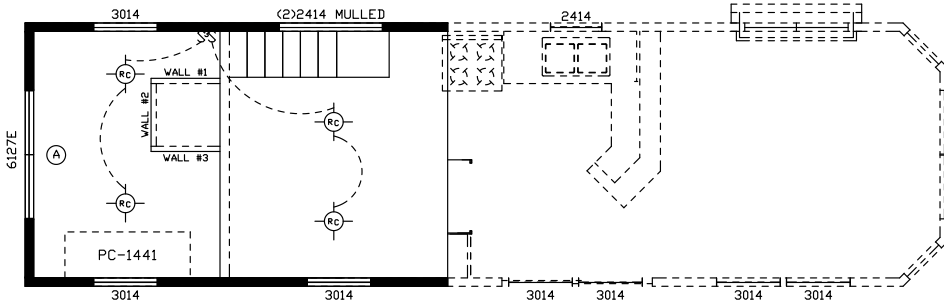


PRO-256 Optional Stacked Washer / Dryer

100169



Model # 100152 Loft

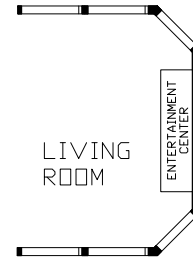
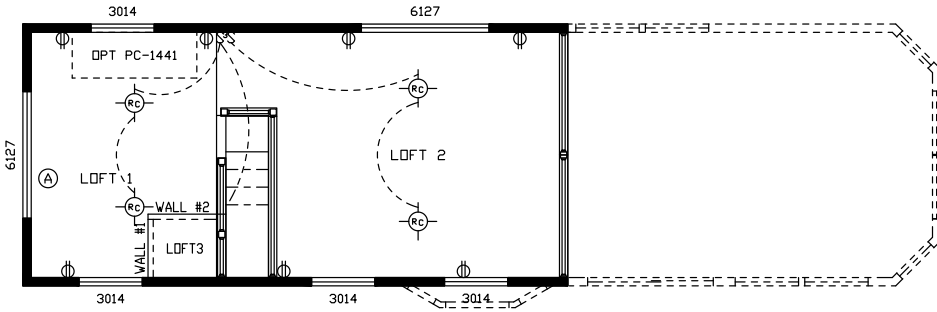


Model # 100152 (also available as a flat bedroom floor - Model #100162)

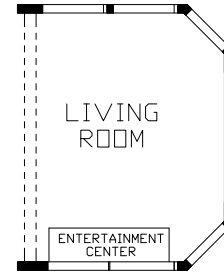
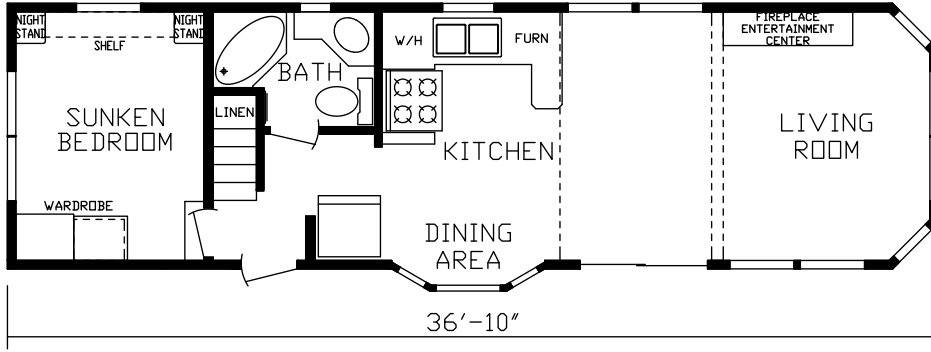


100152

Model # 100171 Loft



PRO-162
Optional
Entertainment
Center Location



PRO-165
Optional
Entertainment
Center Location

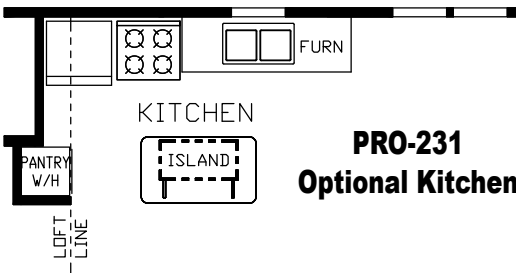
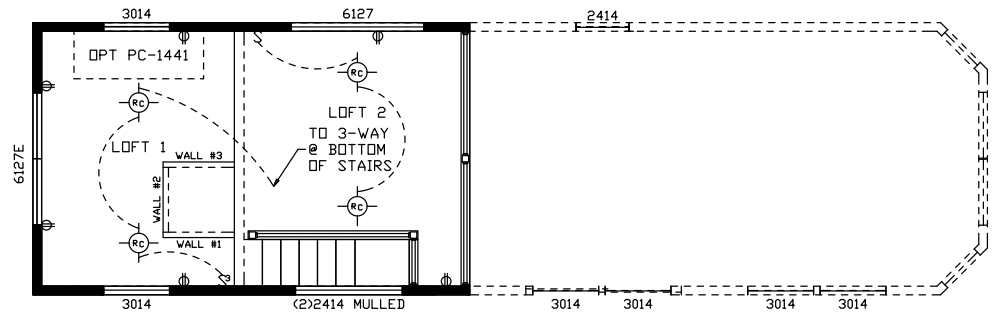


PRO-243
Optional
Entertainment
Center Location

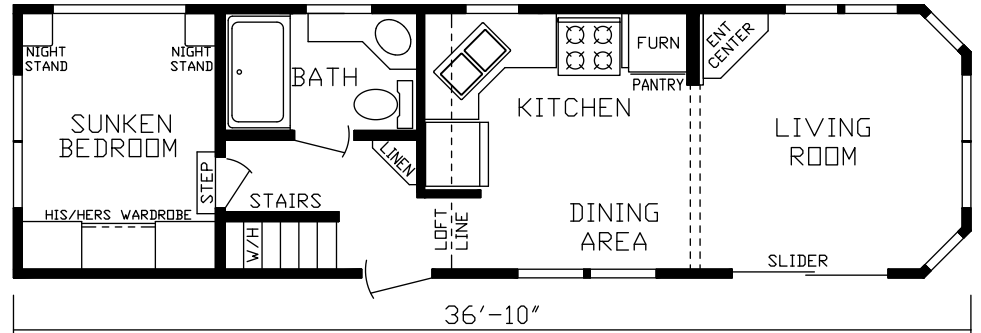
Model # 100171



Model # 100155 Loft



PRO-231
Optional Kitchen

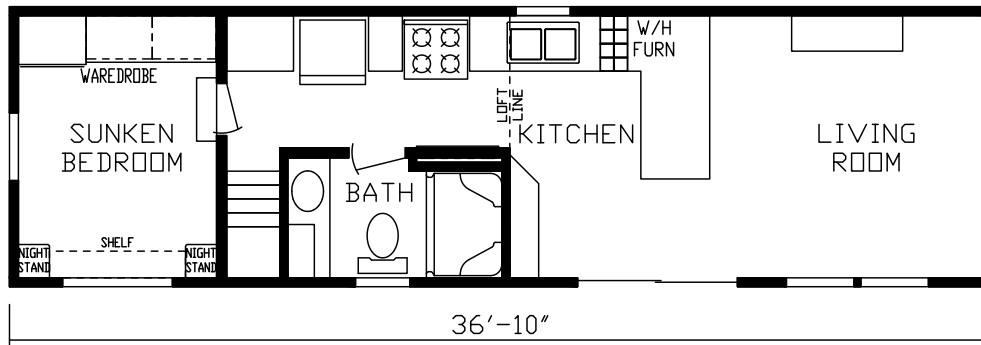
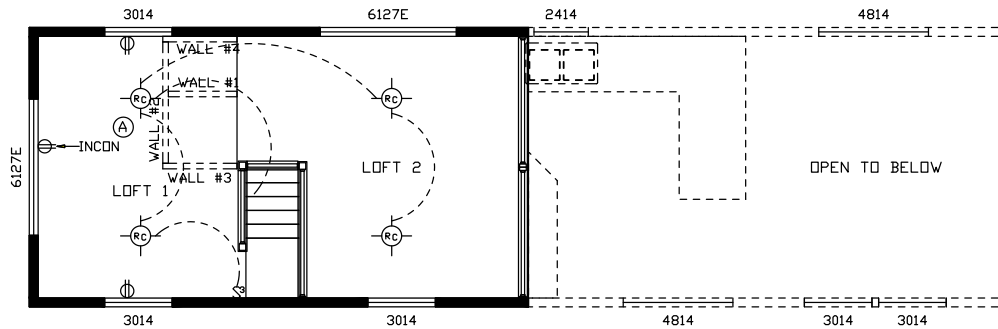


Model # 100155

BUILT BY THE HOUSING EXPERTS

100171

Model # 100166 Loft

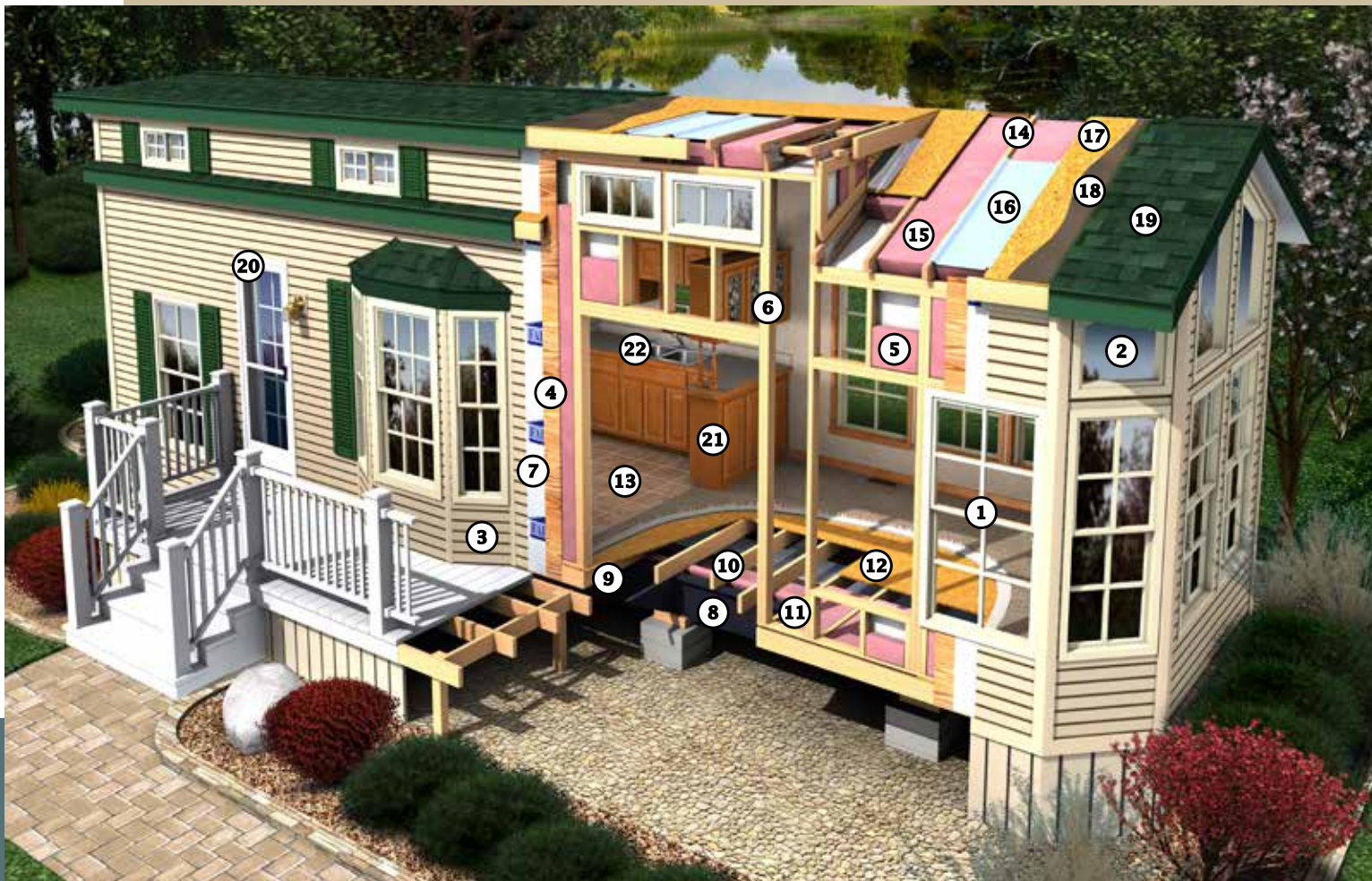


©

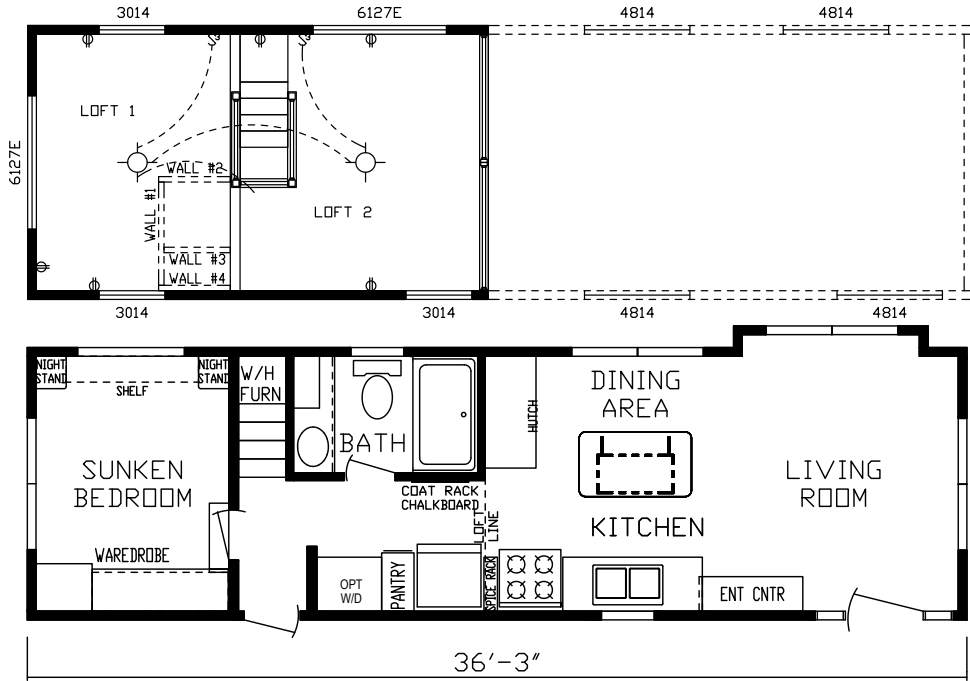
Model # 100166 (also available as a flat bedroom floor - Model #100164)



1. Vinyl Thermopane Windows w/Low E Glass — Tilt-to-Clean Single Hung Gridded
 2. Trapezoid Windows w/Low E Glass per Plan
 3. Royal Dutch Vinyl Lap Siding
 4. 7/16" OSB Sheathing Throughout
 5. R-13 Kraft Backed Fiberglass Insulation — Sidewalls
 6. 2 x 4 Sidewall Studs, 16" O.C. — Headers over All Windows & Doors
 7. Exterior Weather Wrap Throughout
 8. 8" I-Beam Frame w/Detachable Hitch
 9. Breathable Mesh Underbelly
 10. 2 x 6 Floor Joists, 16" O.C. — Transverse Framing for Sturdier Floors
 11. R-22 Fiberglass Insulation in Floor
 12. 5/8" OSB Tongue & Groove Floor Decking
 13. Congoleum® Lux Flooring in Kitchen, Bath, Dining Room, Living Room, Hall & Flat Bedroom Floor
 14. 30# Truss Roof Rafters, 16" O.C.
 15. R-19 Insulation in Roof
 16. Innovent® Vent Chutes Above Insulation
 17. 7/16" Roof Decking
 18. Ice and Water Shield — Full Roof Coverage
 19. Owens Corning® Oakridge Pro Lifetime Shingles, Eaves, Soffit & Ridge Ventilated
 20. Residential Rear Entry Door w/Storm Door — 10 Lite Door per Plan
 21. Hardwood Residential Cabinets w/Hardwood Stiles, Flat Panel Cabinet Doors & Hidden Hinges
 22. Dual Bowl Stainless Steel Sink w/Pull Out Chrome Faucet
- Additional Features (not Shown)**
- 1/2" Drywall Walls (Vinyl Covered)
 - 1/2" Residential Textured Drywall Ceilings
 - 2" Mini Blinds
 - LED Can Lights — Ceiling
 - Shaw Carpet® w/Tack Strip in Sunken Bedroom, Loft & Stairway



Model # 100165 Loft



COUNTRY MANOR
FAIRMONT Park Model RVs



100165

Model # 100165 (also available as a flat bedroom floor - Model #100168)



Rustic Shore Maple



Cottage Slate



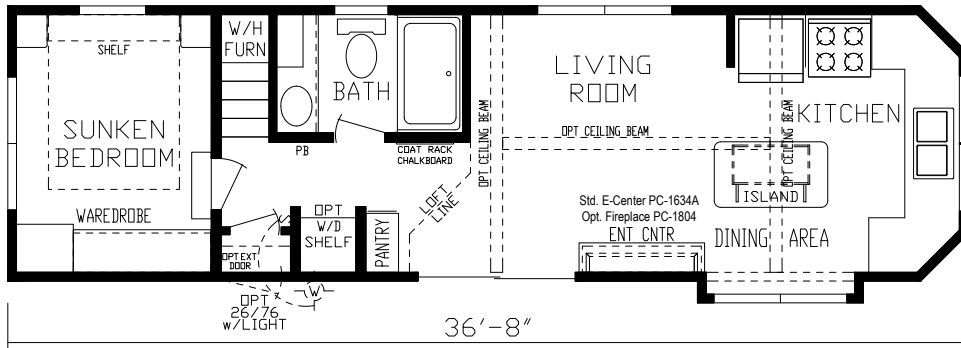
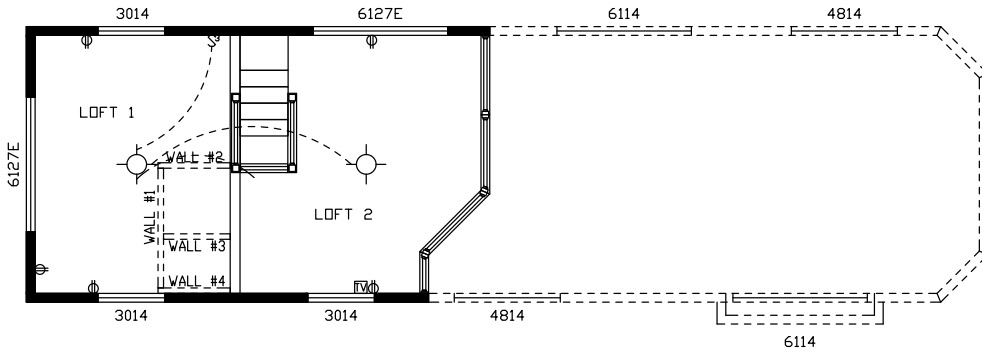
Vintage



Stone Henge

**Choose from Our
Hardwood Shaker
Cabinetry
— Standard in
ALL Fairmont
Park Models**

Model # 100170 Loft



Model # 100170



**Choose from Our
NEW Bedding —
Standard in
Country Manor
Park Models**



Sandstone



Pacific



Pewter

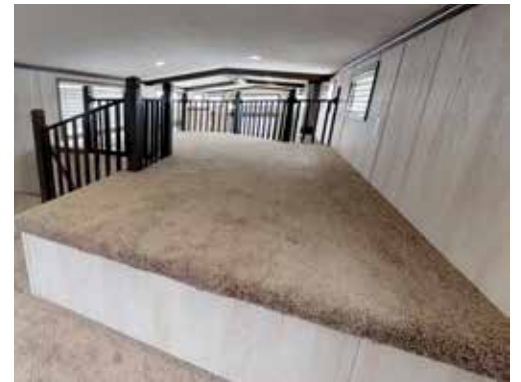


**PC-1804
Optional
Entertainment
Center
Shown**

100170

COUNTRY MANOR

FAIRMONT Park Model RVs

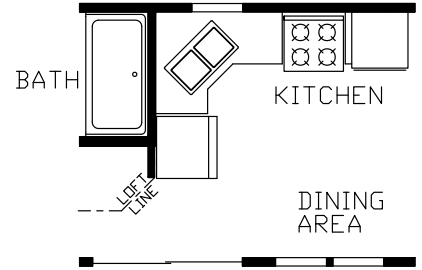
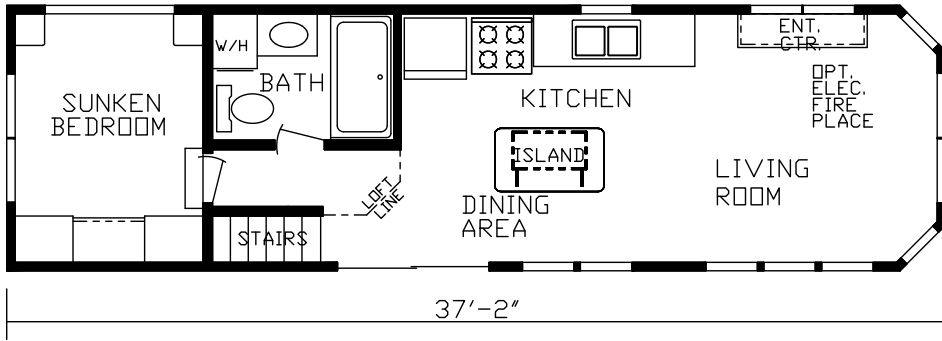
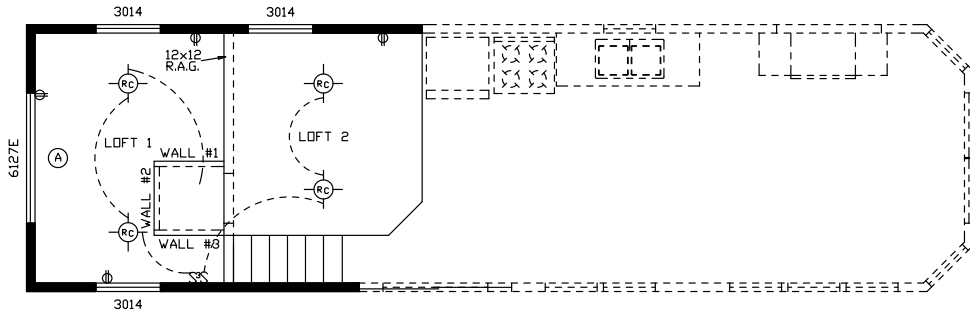


PC-1804 Optional Entertainment Center Shown (left and below)



100170

Model # 100131 Loft

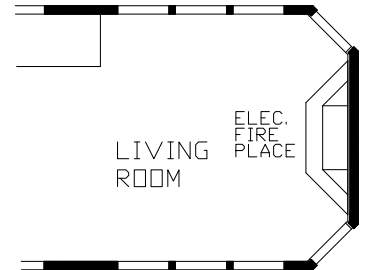


PRO-233
Optional Kitchen

Model # 100131



PRO-153
Optional Kitchen



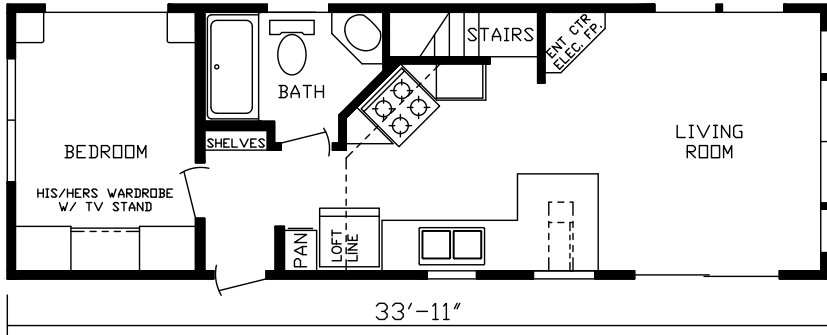
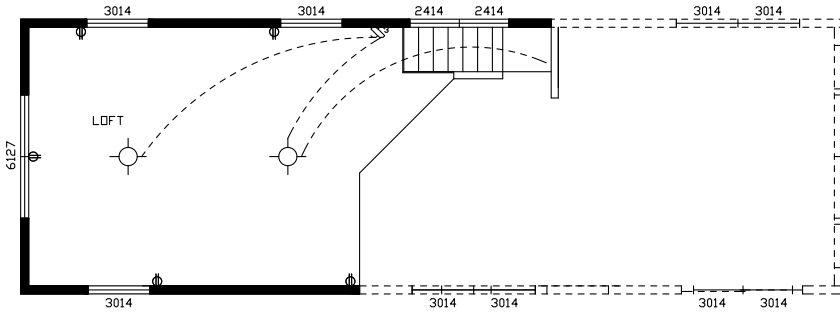
PRO-066
Optional Living Room



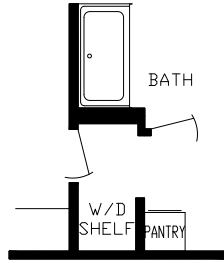
100131

GET MORE FOR

Model # 100154 Loft

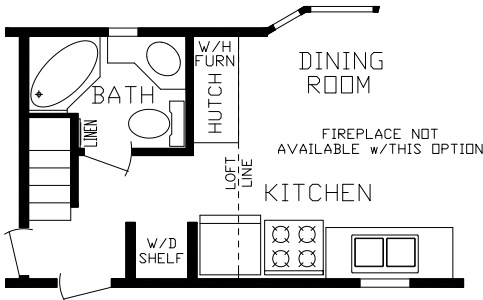
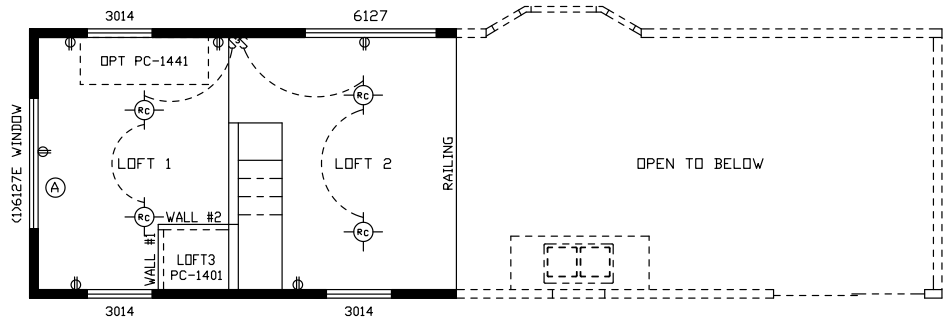


Model # 100154

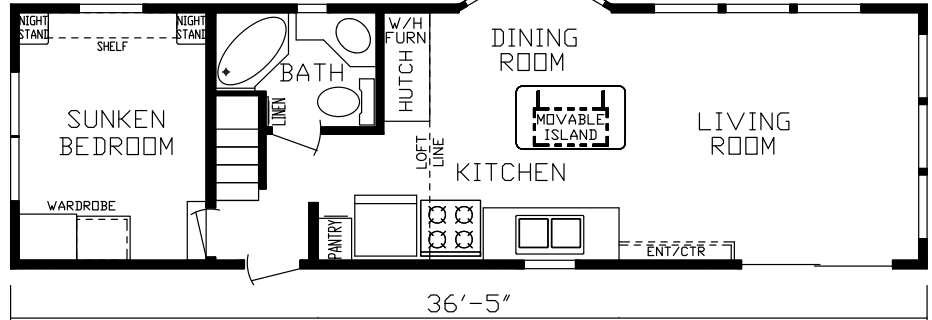


PRO-200
Optional Stacked
Washer / Dryer

Model # 100173 Loft



PRO-255
Optional Stacked Washer / Dryer



Model # 100173 (also available as a flat bedroom floor - Model #100172)



100154

COUNTRY MANOR

FAIRMONT
Park Model RVs

GENERAL

- 2" x 4" Sidelwalls, 16" O.C.
- 2" x 6" Floor Joists, 16" O.C. Transverse
- 5/8" OSB Tongue & Groove/Glued & Screwed Floor Decking (4' x 8')
- 30 PSF Rafters, 16" O.C.
- 2/12 Roof Pitch — 6/12 Dormer Roof Pitch (Per Print)
- 7/16" OSB Plating Under Siding
- 1/2" Drywall Vinyl Covered Walls

FLOORING

- Shaw® Carpet in Sunken Bedroom, Loft & Stairway
- 5 lb. Rebound Pad
- Congoleum® Roll Goods Bath, Kitchen, Flat Floor Bedroom & Living Room

HEATING

- 40,000 BTU Gas Furnace
- 5" x 12" Residential Aluminum Heat Ducts
- 4" x 10" Floor Registers

ELECTRICAL

- Porch Light at Exterior Doors
- GFI Breakers Per Code
- 50 Amp Service w/25' Supply Cord
- Safe House Pkg. — Smoke Detector, LP Detector, Fire Extinguisher, & GFI Receptacles
- 1 Outside GFI Receptacle — Doorside Waterproof
- Recessed Overhead LED Lights
- 3 TV Jacks — Master BR, LR & Loft
- USB Port & Recept at Nightstands

DOORS

- Raised 6-Panel White Interior Passage Doors
- Vinyl Thermopane Patio Door per Plan
- Rear Entry Door w/Screen Where Applicable Per Plan

PLUMBING

- Double Bowl Stainless Steel Kitchen Sink
- High Arch Kitchen Faucet w/Pull Out
- 16 Gallon Gas/Electric/DSI Quick Recovery Water Heater
- Residential Ceramic Commode

BATH

- Exhaust Fan in Bath
- Porcelain Lav Bowl
- Lighted Medicine Cabinet
- 1 Piece Tub/Shower Per Plan
- Windows Most Plans

INSULATION

- R-19 Fiberglass Sprayed-In Insulation in Roof
- R-13 Fiberglass Kraft Backed Insulation in Sidelwalls
- R-22 Fiberglass Insulation in Floor
- HomeGuard™ Exterior Weather House Wrap

CABINETRY

- 4 Cabinet Color Choices
- Hardwood Shaker Cabinets & Stiles — In Screwed
- European Style Hidden Cabinet Hinges
- Side Mounted Metal Drawer Guides w/Dovetail Wood Construction
- High Pressure Dual Laminated Countertops
- Tip Out Trays Under Sink

DÉCOR

- Wingate Wood Cornice Boards to Match Cabinets
- 2" Blinds, Selected Windows
- Vertical Blind for Patio Door
- 1/2" Residential Textured Drywall Cathedral Ceilings (Better Insulated & More Sound Proof)
- Bedspread, Pillows, & Shams — 3 Decor Color Tone Choices (Blue, Brown & Grey)

APPLIANCES

- Black Whirlpool® Appliances
- 2-Door Frost Free Refrigerator
- 30" Standard Gas Range
- Microwave Above Range

EXTERIOR

- Removable Hitch
- Royal Dutch Lap Vinyl Siding
- Owens Corning® Architectural Shingled Roof w/Lifetime Warranty
- Ice & Water-Weather Lock Under Shingles — Full Roof Coverage
- Ventilated Soffit
- Ridge Vent
- Residential Step Flashing at Dormer Transition
- Innovent® Vent Chutes in Roof
- Breathable Mesh Underbelly

WINDOWS

- Kinro® Egress Windows in All Bedrooms
- Kinro® Thermopane Vinyl Dual Glaze Low E Gridded Windows (White) Single Hung

FURNITURE

- Queen Slide-a-Bed Sleeper Sofa & Recliner
- Dinette Table w/4 Chairs or Bar Stools Per Plan
- Movable Island Per Plan
- Queen Bed w/Metal Bed Frame & Pillow Top Mattress

POPULAR OPTIONS

- Air Conditioning - 13.5K BTU
- Stainless Steel Appliances
- Wall Mount Loft Air Conditioner
- Fireplaces - with or without Stone
- 20 Gallon Electric Water Heater
- Lift Frame Bed w/Storage Box
- Glass Tub/Shower Door
- Shower IPO Tub/Shower
- Ceramic Backsplash - Kitchen & Bath
- Metal Roof
- Solid Surface Countertops
- Black Water Holding Tank w/Marine Toilet per Plan
- Gray Water Holding Tank per Plan
- Sectional Sleeper Sofa
- Non-Sunken Bedroom per Plan
- 15-Lite Door w/Dual Sidelites IPO Patio Door
- Loft Entertainment Center
- Metal Underbelly
- Stainless Steel Farmers Sink
- *available only on models 100164, 100165, 100166, 100168 & 100170
- Black Hardware



All descriptive representations are believed to be accurate at the time of publication. However, due to product improvement and changes in suppliers, design and production may vary. Note: Fairmont Homes reserves the right to make changes in price, colors, materials, components, and specifications and to discontinue models at any time without notice or obligation. Fairmont Homes assumes no responsibility for any error in type, print reproduction, specifications, or floor plans in this or any print material. ©12/2019 Fairmont Homes, LLC, ALL RIGHTS RESERVED

WHAT'S IN YOUR PARK MODEL?