

2020 PARK MODELS

CAVCO

150



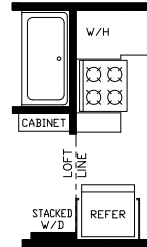
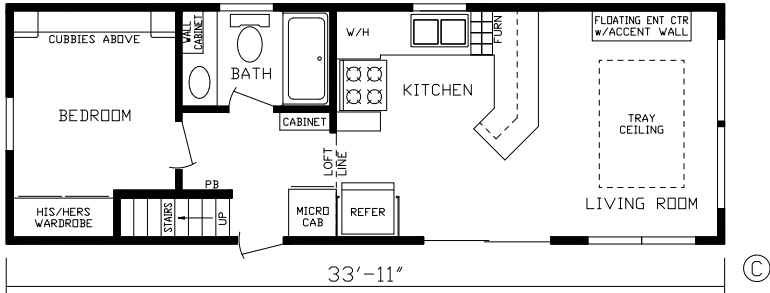
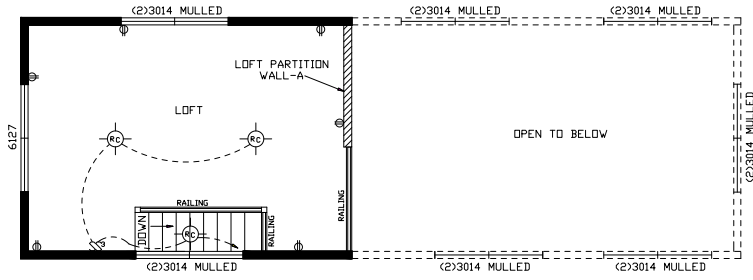
190006 SHOWN



JUST PARK IT

"Build Your Own Unit" at fairmontparkmodels.com

Model # 190000 Loft



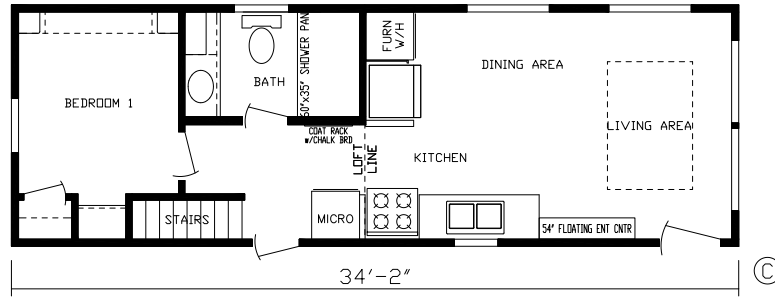
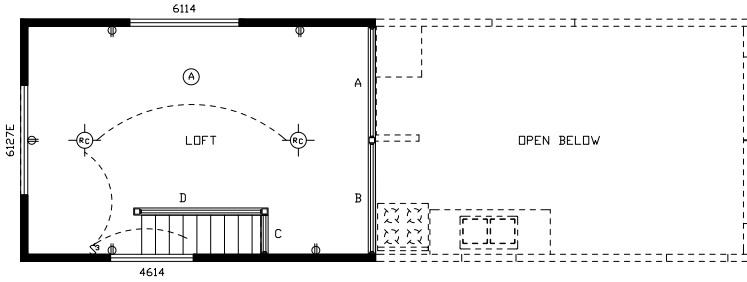
**PRO-238
Optional
Stacked
Washer/
Dryer**

Model # 190000 — lofted version of 190005

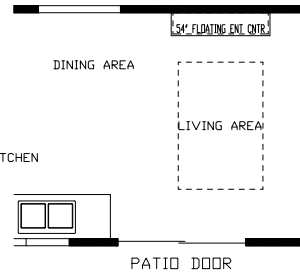
190000



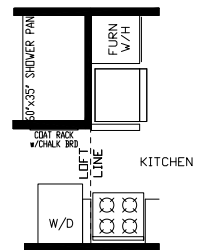
Model # 190001 Loft



Model # 190001



PRO-245 Optional Living Room



PRO-249 Optional Washer/Dryer

**STANDARD FRONT END
ON 190000, 190001,
190005, 190006**

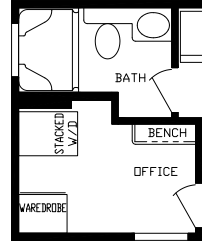
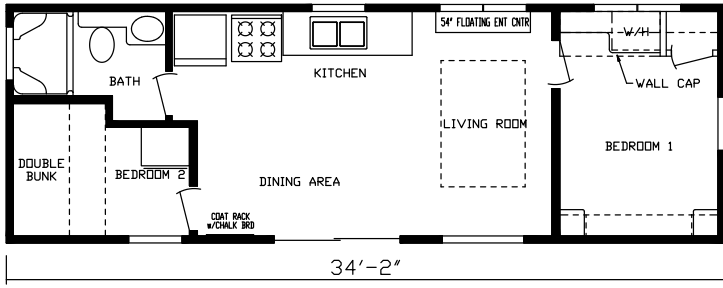


**OPTIONAL
FRONT END
ON 190000, 190001,
190002, 190005,
190006**



190001

Model # 190002



PRO-242
Optional Stacked
Washer / Dryer

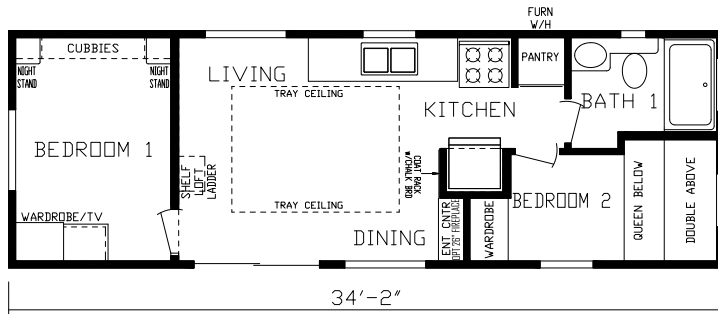
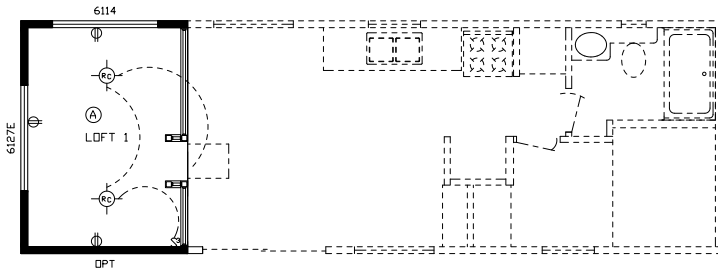


PEW-222
STANDARD
FRONT END
FOR 190002

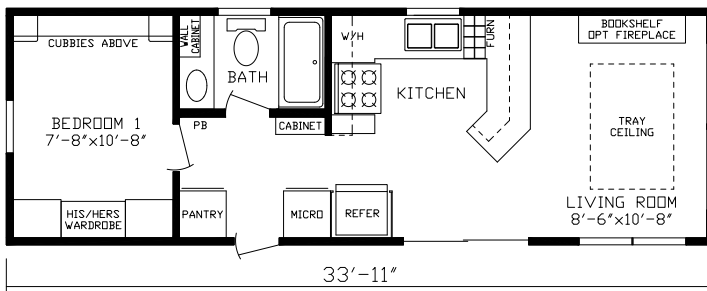


190002

Model # 190004 Loft



Model # 190004



Model # 190005 — non-lofted version of 190000



190004

**Choose from Our
Hardwood Shaker
Cabinetry — Standard in
ALL Fairmont Park Models**



Rustic Shore Maple



Cottage Slate



Vintage



Stone Henge





Sandstone

Choose from Our
NEW Valance Fabrics —
Standard in Cavco 150
Park Models

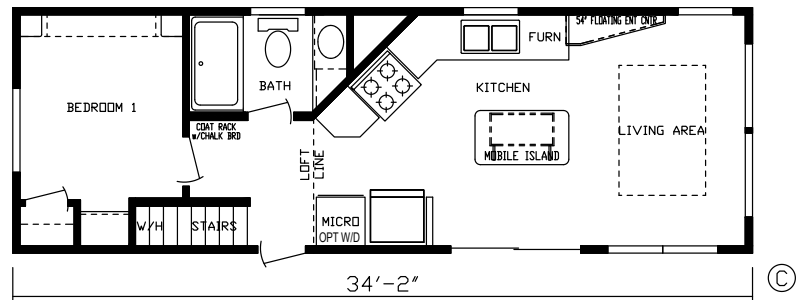
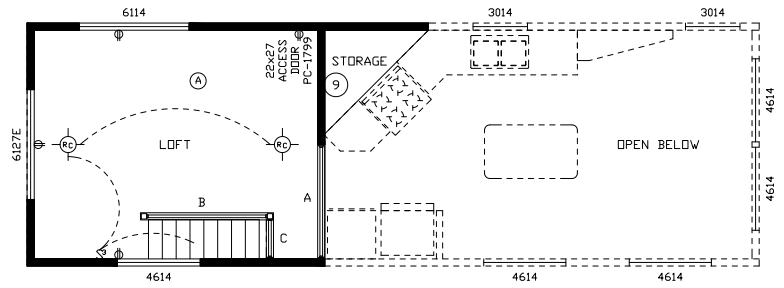


Pacific



Pewter

Model # 190006 Loft



Model # 190006

190006





EXTERIOR

- Royal Dutch Lap Vinyl Siding
- Exterior Wainscot (3/4 Color & 1/4 Different Color)
- 7/16" OSB Exterior Wrap
- 7/16" Roof Decking
- Owens Corning® 25 Year Shingles
- Ice Dam Shield Underlayment – Full Coverage
- 9' Elevation w/Transom Windows – Non Loft Units
- 9'-8" Elevation w/Transom Windows – Loft Units
- Low E Vinyl Thermopane Gridded Windows
- Exterior GFI Receptacle
- Home Guard® Exterior Weather House Wrap
- 2" x 4" Exterior Sidewalls 16" O.C.
- 2" x 6" Transverse Floor Joist 16" O.C.
- Steel Strapping from Truss & Floor to Sidewall
- 8" Steel I-Beam Construction
- Vinyl Sliding Glass Door – Per Plan
- 10 Lite Rear Door w/Deadbolt & Storm – Per Plan
- Detachable Hitch
- Woven Shepweave Underbelly
- Lineals – Doorside & Hitch End (White)
- 190001 Residential Front Door w/Storm

INTERIOR

- LED Lights T/O Interior
- Recessed Lighting in all Rooms
- Floating Entertainment Center LR– Per Plan w/ TV Jack
- Lighted Ceiling Fan Living Room & Master Bedroom – Non Loft Models
- Lighted Ceiling Fan Living Room – Loft Models
- ½" Drywall Décor Vinyl Covered Walls
- Fabric Window Valances (Sandstone Brown, Pacific Blue or Pewter Grey) & 2" Faux Blinds
- Coat Rack w/Board Accent Wall
- Convenient Chalk Board over Coat Rack
- Residential Crown Molding & Door Trim
- Raised 6 Panel Interior Passage Doors
- ½" Residential Tape & Textured Drywall Flat Ceiling
- Smoke & LP Detector & Fire Extinguisher
- Ceiling Tray w/Accent VOG
- Pet Center – Per Plan
- USB Port each Bedroom
- Transom Windows LR, Loft & Bedroom – Per Plan
- 5/8" T & G OSB Floor Decking – Glued & Screwed
- Congoleum® Linoleum T/O Main Level
- Shaw® Mantra Carpet Loft & Stairway – Per Plan

BATHROOM

- Fiberglass Tub or Shower – Per Plan w/Curtain
- Residential Style Ceramic Commode
- Residential Ceramic Sink w/Single Lever Faucet
- Tissue Holder & Towel Bar
- Exhaust Fan
- GFI Protected Receptacle
- Window– Per Plan
- Bella Core Shower Model 190001

BEDROOM

- His & Her Reading Lights with Individual Switches
- Bedside Nightstands w/Receptacle, USB Port & Overhead Cubby Cabinets
- Entertainment Center w/Storage Drawers – Per Plan
- Egress Window
- Bunk Mattresses

KITCHEN / DINING AREA

- Concealed Cabinet Hinges
- 40" Overhead Cabinets – Hardwood
- Black Appliances
- Frost Free Refrigerator – Whirlpool
- 30" Gas Range – Whirlpool
- High Arch Kitchen Faucet w/Pull out Sprayer
- Dual Bowl Stainless Steel Kitchen Sink
- Microwave – Per Plan
- GFI Protected Receptacle
- Curved 30" Euro Style Range Hood
- Laminate Countertops & Backsplash
- Adjustable Overhead Shelving
- Tip Out Trays at Kitchen Sink

ADDITIONAL STANDARD FEATURES

- 40,000 BTU Ducted Furnace w/Auto Ignition
- Toe Kick Floor Registers in Wet Areas
- R-19 Roof / R-13 Exterior Walls & R-11 Floors
- 50 AMP with 25' Supply Cord
- Interior Panel Box Location
- 20 Gallon Electric Water Heater w/Exterior Access Door
- RVIA Seal
- Fabricated Aluminum Heat Ducts
- TV Jack at Living Room Entertainment Center

POPULAR OPTIONS

- Air Conditioning-13.5K BTU
- Wall Mount Loft A/C
- Stainless Steel Appliances
- Washer/Dryer – Per Plan
- 16 Gallon Gas/Electric DSI Water Heater
- Queen Slide a Bed Sleeper Sofa
- Recliner
- Dinette Table w/4 Chairs
- Movable Island and 4 Chairs or Stools
- Patio Door Vertical Blinds
- Solid Surface Countertops
- 100 Amp Service
- 4 Bar Height Chairs or Stools
- Queen Bed (Metal Frame, Box Spring & Queen Mattress)
- Pillow Top Mattress
- Bedspread, Pillows & Shams (Match Decor)
- Bunk Spreads (Match Decor)
- Coffee Table w/Lift Up Storage
- End Tables
- Lift Frame Bed w/Storage Box
- Glass Tub/Shower Doors
- Shower IPO Tub
- Metal Roof
- Metal Underbelly
- Lighted Medicine Cabinet over Bath Lav
- Black Hardware
- 1-Color Exterior Siding – No Wainscot
- White Vinyl Exterior Corner Posts
- Awning Rail (Omit Lineals)



All descriptive representations are believed to be accurate at the time of publication. However, due to product improvement and changes in suppliers, design and production may vary. Note: Fairmont Homes reserves the right to make changes in price, colors, materials, components, and specifications and to discontinue models at any time without notice or obligation. Fairmont Homes assumes no responsibility for any error in type, print reproduction, specifications, or floor plans in this or any print material. ©12/2019 Fairmont Homes, LLC, ALL RIGHTS RESERVED

WHAT'S IN YOUR PARK MODEL?