

2020

[fleetwoodrv.com](http://fleetwoodrv.com)

CLASS A GAS | BOUNDER



 **FLEETWOOD RV**  
BOUNDER





- 2 | INTRODUCTION
- 4 | CONSTRUCTION
- 6 | INTERIOR GALLERY
- 12 | FLOORPLANS
- 14 | EXTERIOR GRAPHICS
- 15 | DECOR
- 16 | STANDARDS AND OPTIONS
- 18 | OUTSTANDING STANDARDS AND OPTIONS
- 19 | SPECIFICATION CHARTS

## BREAK FREE FROM BOUNDARIES.

There's a lot to brag about when you're the best-selling motorhome of all time—which is just what Bounder is. With five floorplans, you can have bunkbeds, a Jack and Jill bath, a second bath or even 36 more square feet of patio space with the Extended Living Edition. Plus, you get Fleetwood's exclusive Power Platform® chassis and an automotive-style dash with dual monitors.

But just because Bounder is the champion of the RV world doesn't mean it's content to live on a legacy. For 2020, we've added the Bilstein® Steering Stabilizer System, a 7-inch touchscreen systems control panel and a 100w solar panel. Or, you can upgrade to a 265w panel.

For more than 30 years, Bounder has been a legend. Come be a part of it.



BOUNDER 35K  
BISCAYNE GRAPHICS



WE'LL BRING THE POWER,  
YOU BRING THE PEOPLE.

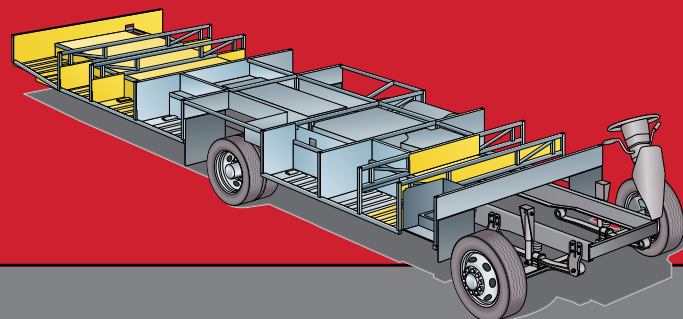


**POWER  
PLATFORM®**

### The Power Platform Chassis™

The Power Platform puts strength, stability, and reliability front and center. Perfect for trips requiring large carrying capacities, and built to store everything you need with spacious pass-through storage, the Power Platform is the ideal chassis for optimum balance and control — Found on Fleetwood gas motorhomes.

Every new adventure requires a solid foundation. The Power Platform chassis is designed with balance, control, a smooth ride, and ample space in mind, all working together to give you a ride like no other RV can provide.



### RV OWNERCARE

Limited one-year/15,000-mile coach warranty and three-year/45,000-mile structural warranty, whichever occurs first, and it is fully transferable for the first 12 months. RV OWNERCARE is one of the RV industry's most comprehensive programs and includes systems, appliances, components and construction, with no deductible and no service charge.

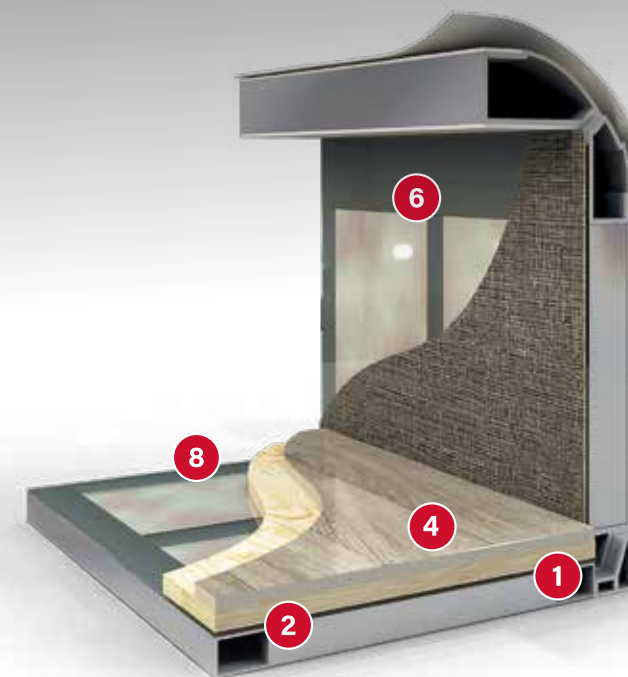
Chassis Warranty provided by Ford®

**FLEETWOOD RV®**



**We build strength  
and quality from the  
inside out.**

Fleetwood's exclusive Powerlock™ system is integrated into all Fleetwood RV Class A Gas models.



At Fleetwood, we don't settle for anything less than the best and neither should you. That is why every Fleetwood features industry-leading materials and construction standards.

#### 1 PowerLock System™

##### Interlocking Floors, Walls, Ceiling

Fleetwood's interlocking aluminum extrusion wall-joint system integrates floor, sidewall and roof assembly into one locked-together overall structure for long-term performance and durability.

#### 2 Precision Welded Joints

The all aluminum hull structure is engineered and built to precise tolerances and then precision welded to ensure strength and durability on even the roughest road trip.

**At Fleetwood RV, it's not just what you see that matters. It's what you don't.**

#### 3 Tuff-Coat Fiberglass Walls

Thicker than other manufacturers, our Tuff-Coat fiberglass walls provide a durable skin and is the perfect surface for an automotive style finish.

#### 4 Thick Robust Floor

Thicker than the industry standard, Fleetwood engineered the 1" thick floor for more sound deadening and more insulation which results in a quieter, more comfortable ride no matter the weather or terrain outside.

#### 5 Solid Bead-Foam Insulation™

Fleetwood's above-standard insulation material and process doesn't allow settling or air gaps to form. There is no forcing the precision cut insulation into position like the roll-type pink fiberglass insulation used by other manufacturers.

#### 6 Loctite® Industrial Adhesive

Engineered to meet bonding, sealing and assembly requirements for a durable structure with no de-lamination.

#### 7 No Wood Substrate

Unlike most Class A motorhome manufacturers, you won't find any wood substrate on the exterior walls.

#### 8 1/2" Plywood Subfloor

Thicker than most competitors who use OSB or chip board, the integrated 1/2" subfloor provides a solid surface for flooring and eliminates movement and flexing while traveling.

#### 9 Vacu-Bond™ Construction

Fully sealed and weather-resistant, the vacuum-bonded assemblies combine materials and construction for a straight, solid integrated wall that is better suited to withstand the rigors of the road. An adhesive bonding process applies up to 415,000 pounds of vacuum pressure to the welded-aluminum sidewall frame, bead-foam insulation, thick Tuff-Coat fiberglass skin and inner wall materials, far exceeding industry standards.

#### 10 CNC Precision Routed Walls and Floors

Computer driven routers precisely route walls and floors to fit exact specifications to eliminate gaps, misalignments and provide for a more solid integrated overall structure.

Each of these advantages have been engineered to deliver superior reliability, durability and most of all, customer satisfaction.







BOUNDER 36F  
Shown in Spiced Mocha® decor  
with Oxford cabinetry



## BOUNDER

*#1 Selling Motorhome of All-time*

33C | 35K | 35P | 36F | 36FP



BOUNDER 36F  
Shown in Spiced Mocha® decor  
with Oxford cabinetry



BOUNDER 35K  
Shown in Oceanview® decor  
with Oxford cabinetry





BOUNDER 35K  
Shown in Oceanview decor  
with Oxford cabinetry



BOUNDER 36F



BOUNDER 35K  
Shown in Oceanview decor  
with Oxford cabinetry







BOUNDER 35K  
Shown in Oceanview decor  
with Oxford cabinetry



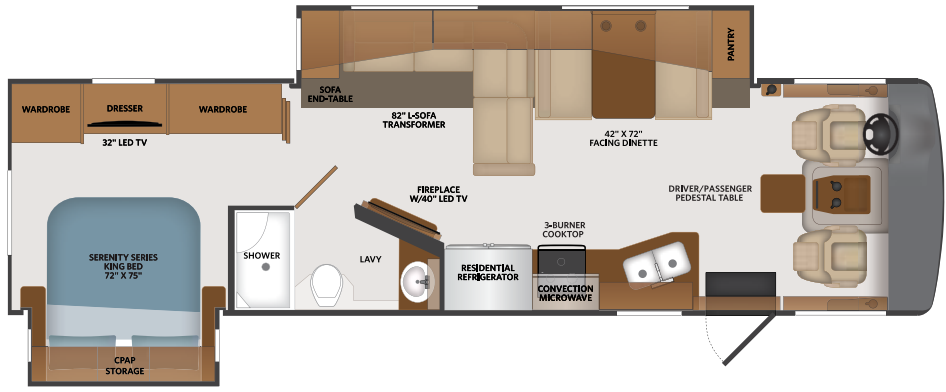
**FLEETWOOD RV**

Build your own Bounder at  
[fleetwoodrv.com/build-your-own](https://fleetwoodrv.com/build-your-own)



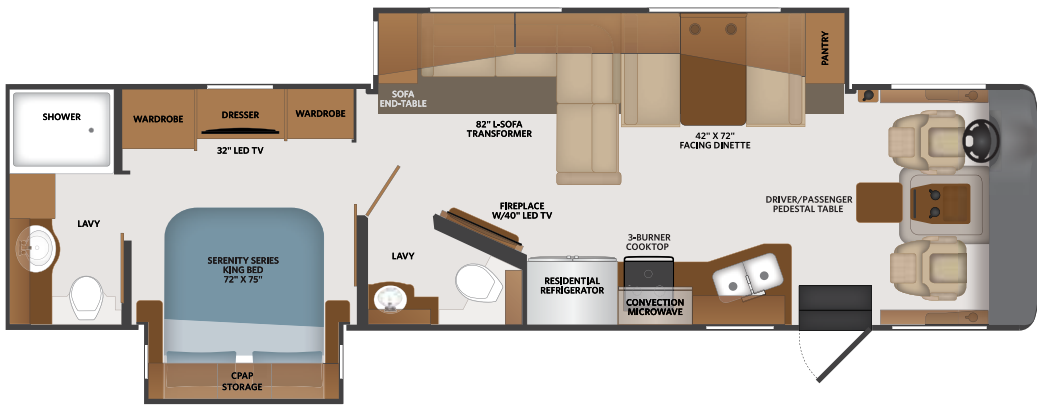
33C

Options:  
085, 089, 113,  
126, 191, 194,  
220, 304, 435,  
447, 470, 485,  
671, 833



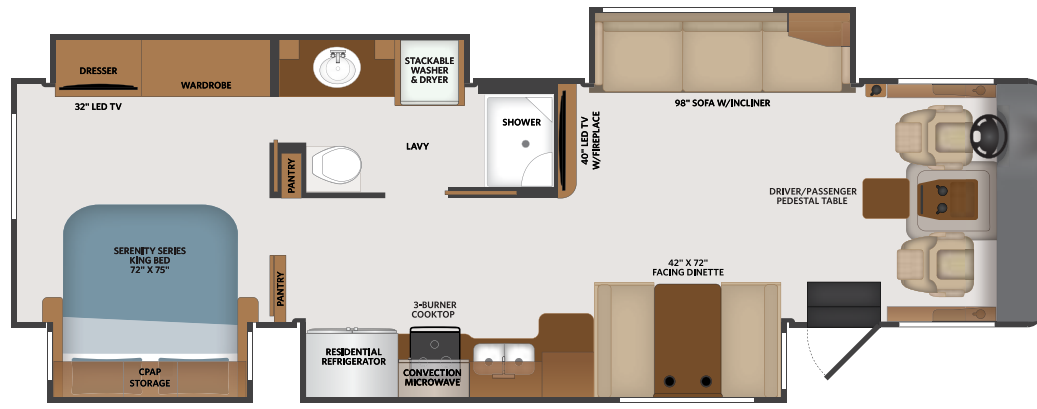
35K

085, 089, 113,  
126, 191, 194,  
220, 304, 435,  
447, 470, 485,  
671, 833



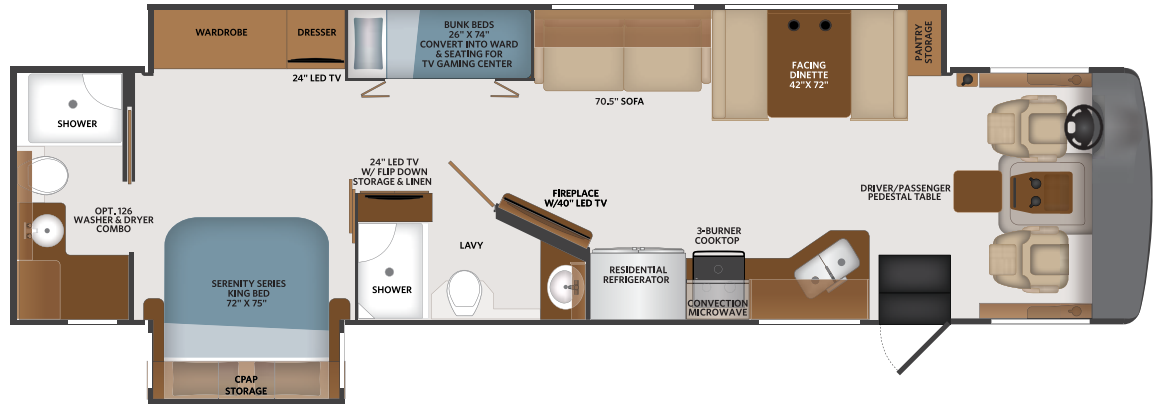
35P

Options:  
085, 089, 113,  
208, 220, 304,  
435, 447, 470,  
485, 671, 833



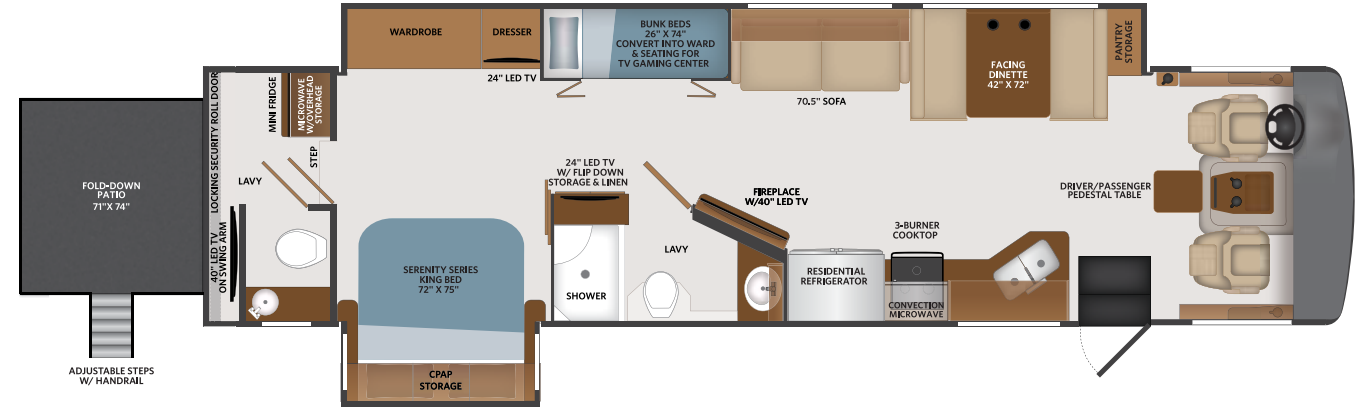
36F

Options:  
085, 089, 113,  
126, 194, 220,  
304, 434, 447,  
470, 485, 671



36FP

Options:  
085, 089, 113,  
194, 220, 304,  
435, 447, 470,  
485, 671



AVAILABLE OPTIONS

085	UPGRADED STEREO W/COLLISION MITIGATION
089	UPGRADED WIFI PACKAGE LTE (CELLULAR INTERNET MODEM)
113	RANGE-THREE BURNER DROP-IN
126	WASHER/DRYER - ALL IN ONE COMBO
191	EXPANDABLE L-SOFA
194	THEATRE SEATING SOFA
208	L-SOFA/FREE STANDING DINETTE W/CREDENZA
220	HIDE-A-LOFT™ DROP DOWN QUEEN BED W/500LB CAPACITY

304	SOLAR ELECTRIC PANEL (265W)
435	CSA-PACKAGE FORD®
447	CSA-FORD® INSTRUMENT PANEL
470	SUMOSPRINGS® CHASSIS STABILIZER FRONT/REAR
485	BLIND SPOT DETECTION
671	MANUAL POWER CORD REEL
833	FREE STANDING DINETTE W/CREDENZA

- 113 RANGE-THREE BURNER DROP-IN
- 126 WASHER/DRYER COMBO
- 194 THEATRE SEATING
- 191 EXPANDABLE L-SOFA
- 220 HIDE-A-LOFT™ DROP DOWN QUEEN BED
- 208 L-SOFA/FREE STANDING DINETTE W/CREDENZA
- 833 FREE STANDING DINETTE W/CREDENZA



EXTERIOR GRAPHICS



STATE-OF-THE ART  
TECHNOLOGY & SAFETY — STANDARDS & OPTIONS

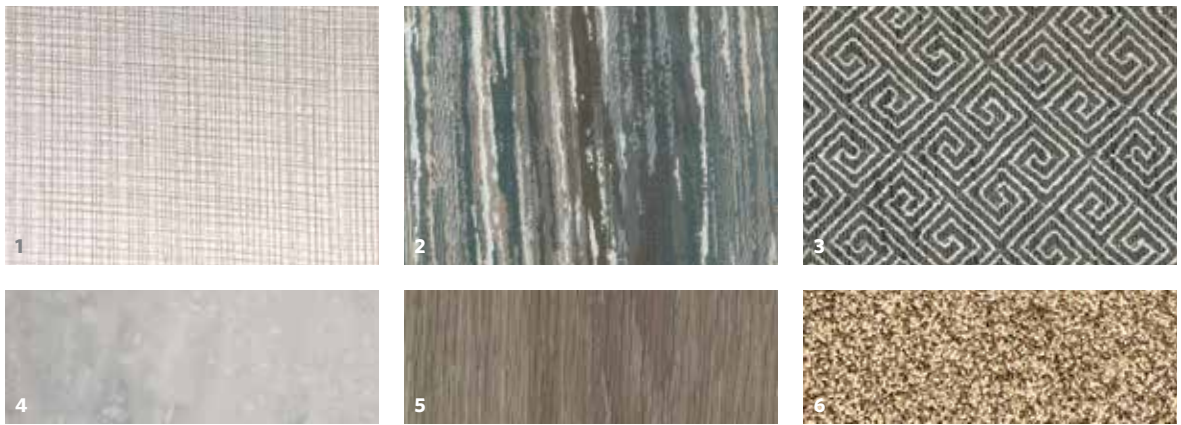
WiFiRanger™Sky4 DC	S
WiFiRanger™Sky4 ProPack w/LTE (Cellular Internet Modem) <i>Includes Cell Booster and GPS</i>	O
Kenwood® Stereo with Collision Mitigation	O
Solar Panel 265w	O
Velvac® Blind Spot Detection in Mirror	O



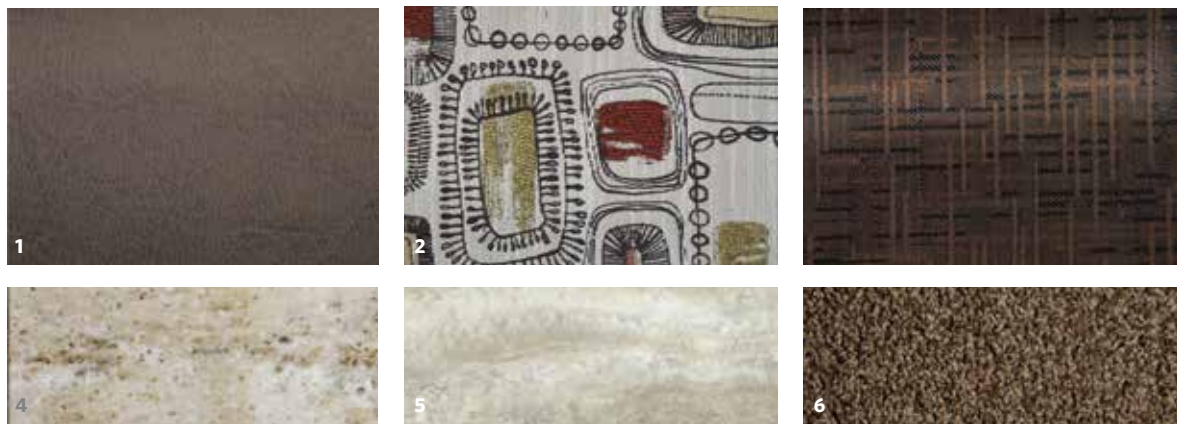
Standard 100w solar panel  
Upgrade to a 265w panel

INTERIOR DECOR

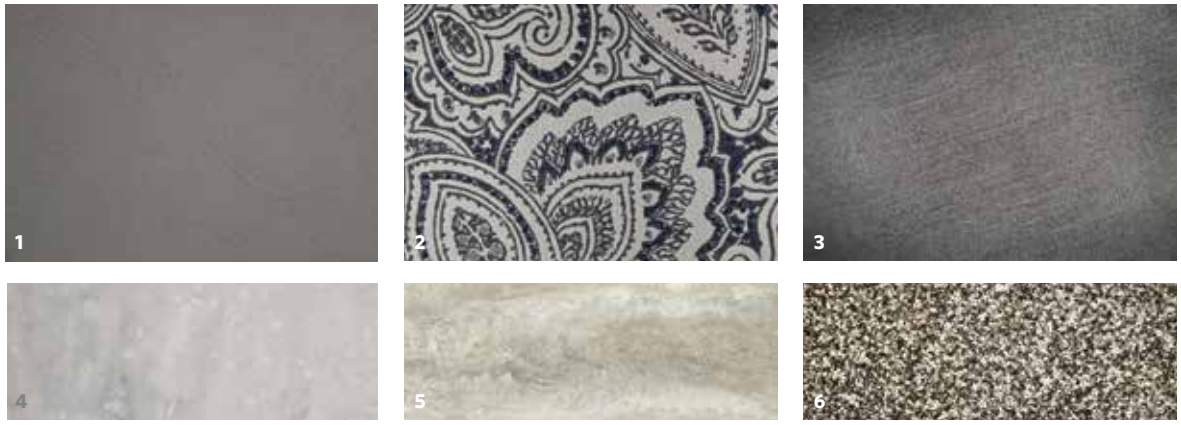
Oceanview



Spiced Mocha



Sterling Slate



1 SOFA  
2 LIVING ACCENT

3 BEDSPREAD  
4 COUNTERTOP

5 FLOORING  
6 CARPET

CABINETRY



Cappuccino



Greystone



Oxford

Bounder interior designer recommends:

- Oceanview décor with Oxford Cabinetry
- Sterling Slate décor with Greystone Cabinetry
- Spiced Mocha décor with Cappuccino or Oxford Cabinetry

Create a customized look that reflects your personal style.



EXTERIOR	33C	35K	35P	36F	36FP
Aerodynamic Fiberglass Cap w/Auto-motive Headlighting	S	S	S	S	S
Rear Fiberglass Cap w/Automotive Lighting	S	S	S	S	S
ABS Wheel Well Skirts	S	S	S	S	S
TPO Roof - Thermoplastic Polyolefin	S	S	S	S	S
Legless Electric Patio Awning w/LED Lighting and Wind Sensor Retract	S	S	S	S	S
Slideout Awning Toppers Above All Slideouts	S	S	S	S	S
Radiused Entry Door w/Screendoor, Latch, Deadbolt Lock	S	S	S	S	S
Black Luggage Door Handles	S	S	S	S	S
Entry Grab Handle - Acrylic Lighted	S	S	S	S	S
Power Entry Step w/Light	S	S	S	S	S
Bus-Style Luggage Doors - Side Swing Aluminum	S	S	S	S	S
Frameless Dual Pane Windows	S	S	S	S	S
Patio Light - LED	S	S	S	S	S
Front, Side and Rear Clearance and Marker Lighting	S	S	S	S	S
Auto Gen Start	S	S	S	S	S
Gravity Fresh Water Fill	S	S	S	S	S
Service Station - Water Pump Switch, Exterior Shower, Black Tank Flush, City Water Hookup & Drainage Valves	S	S	S	S	S
Park Cable and Satellite Hookup	S	S	S	S	S
Trailer Hitch w/7-Way Round Tow Connection (5,000 lbs.)	S	S	S	—	—
Trailer Hitch w/7-Way Round Tow Connection (8,000 lbs.)	—	—	—	S	S
TV Antenna - Unidirectional King Controls Jack Antenna	S	S	S	S	S
LP Connection	S	S	S	S	S
Hydraulic Leveling Jacks Four Point Fully Automatic	S	S	S	S	S
Rear Ladder	S	S	S	S	S
Premier Paint: Full Body, Four-Color Paint w/Front Clear Mask	S	S	S	S	S
Roof Vent Rain Covers	S	S	S	S	S
KING® Universal Satellite System	S	S	S	S	S
Satellite Delete	O	O	O	O	O

CAB EXTERIOR	33C	35K	35P	36F	36FP
Automotive One-Piece Windshield	S	S	S	S	S
Daytime Running Lights	S	S	S	S	S
Driver/Passenger Tinted Slider Windows	S	S	S	S	S
Automotive Style Windshield Wiper System	S	S	S	S	S
Remote Power/Heated Mirrors w/Turn Signals and Side Cameras - Black	S	S	S	S	S
Blindspot Detection	O	O	O	O	O
CAB INTERIOR	33C	35K	35P	36F	36FP
Driver Chair w/Reclining Back, Swivel and 6-way Power Controls	S	S	S	S	S
Passenger Chair w/Manual Footrest, Reclining Back & Swivel	S	S	S	S	S
Driver/Passenger ABS Style Armrests	S	S	S	S	S
Cupholders Driver/Passenger	S	S	S	S	S
Power Windshield Roller Shade	S	S	S	S	S
Roller Shades Manual Driver/Passenger Window	S	S	S	S	S
Map Flex Lighting Overhead DS/PS	S	S	S	S	S
Black Instrument Gauges w/Electronic Information Center	S	S	S	S	S
High Output Dash Air Conditioning /Heat	S	S	S	S	S
Electronic Cruise Control	S	S	S	S	S
Windshield Wipers w/Delay	S	S	S	S	S
Remote Switch for Power/Heated Mirrors	S	S	S	S	S
Steering Wheel w/Tilt Column	S	S	S	S	S
6" Color Monitor for Side and Rear Cameras	S	S	S	S	S
Kenwood® 6.2" Stereo w/AM/FM/CD/DVD/Bluetooth®/ MP3/USB - Phone Control - Android Rapid Charge - Built in HD Radio - Pandora - Spotify - iHeart Radio - Sirius/XM Ready (Requires Subscription) Wireless Music Browsing - Dual Phone Connection - Remote App - Back-up Camera - Variable Color Illumination	S	S	S	S	S
Collision Mitigation w/6.95" Kenwood® Motorized Tilt Touch Screen Stereo w/AM/FM/CD/DVD/Bluetooth®/ MP3/USB - Remote Control - Phone Control - Siri Eyes Free - Android Auto & Apple® Car Play w/Navigation - Android Rapid Charge - Built in HD Radio - Wireless Music Browsing - Pandora - Spotify - Sirius/XM Ready (Requires Subscription)	O	O	O	O	O
6 1/2" Kenwood® Stereo Speakers	S	S	S	S	S

Sirius/XM Satellite Radio Ready (Requires Subscription)	S	S	S	S	S
USB and Auxiliary Inputs	S	S	S	S	S
Seat Belts - 3 Point Driver & Passenger w/Adjustable Straps	S	S	S	S	S
12V Accessory Ports	S	S	S	S	S
110-Volt AC Outlets	S	S	S	S	S
Automotive Style Dash w/Dual Monitors and Workstation	S	S	S	S	S
Pull-out Center Dash Storage Bin	S	S	S	S	S
Cab Lights	S	S	S	S	S
Generator On/Off Switch	S	S	S	S	S
Battery Booster Switch	S	S	S	S	S
Colored Fiberglass Engine Cover w/ Snack Tray	S	S	S	S	S
Cab Floor Mats	S	S	S	S	S
Cab Area Fans	S	S	S	S	S
Auto Leveling Jack Controls	S	S	S	S	S
Center Table Driver/Passenger	S	S	S	S	S
Auxiliary Start Switch	S	S	S	S	S
Hide-A-Loft™ Drop Down Queen Bed w/24" LED TV	O	O	O	O	O
INTERIOR	33C	35K	35P	36F	36FP
Sofa - Expandable L-Sofa	O	O	—	—	—
Sofa - Tri-fold	—	—	—	S	S
Sofa - Tri-fold w/Facing Booth Dinette w/Dream Dinette	—	—	S	—	—
Sofa - Expandable L-Sofa and Free-Standing Dinette w/Credenza	—	—	O	—	—
Sofa - Jack-knife	S	S	—	—	—
Sofa - Theatre Seating	O	O	—	O	O
Facing Booth Dinette w/Dream Dinette Table	S	S	S	S	S
Free Standing Dinette w/Credenza	O	O	O	—	—
Solid Surface Galley Top	S	S	S	S	S
Surf-X Tops Throughout (Excluding Galley)	S	S	S	S	S
Electric Fireplace	S	S	S	S	S
Feature Wall w/Accent Wall Covering	S	S	S	S	S
Flat Ceiling with Soft Touch Vinyl	S	S	S	S	S

Vinyl Tile Flooring Throughout	S	S	S	S	S
Ozite Lined Cabinet Interiors	S	S	S	S	S
Cedar Lined Wardrobe Interiors (Select Locations)	S	S	S	S	S
Full Extension Drawer Guides w/Latches	S	S	S	S	S
Hidden Euro Hinges and Struts	S	S	S	S	S
Cabinet Door - Solid Wood, Raised Panel	S	S	S	S	S
Solid Wood Ceiling Treatment	S	S	S	S	S
Slideout Fascia - Interior Wood Color Coordinating	S	S	S	S	S
Window Valances w/Lambrequins and Wood Accents	S	S	S	S	S
Manual Day/Night Roller Shades	S	S	S	S	S
Energy Efficient 3" LED Flush Mount Ceiling and Under Cabinet Reading Lights Throughout	S	S	S	S	S
Flush Floor Living Slideouts	S	S	S	—	—
Faucets/Fixtures/Hardware - Brushed Nickel	S	S	S	S	S
INTERIOR ENTRY	33C	35K	35P	36F	36FP
Battery Disconnect	S	S	S	S	S
Interior Entry Grab Handle - Metal	S	S	S	S	S
Multiplex Electric Controls w/App Control	S	S	S	S	S
Entry Door Manual Roller Shade	S	S	S	S	S
Solid Surface Entry Steps w/Lighted Stepwell	S	S	S	S	S
KITCHEN	33C	35K	35P	36F	36FP
Refrigerator - Residential Stainless Steel French Door Style w/Icemaker - Samsung®	S	S	S	S	S
Cooktop 3-Burner w/Solid Surface Covers	S	S	S	S	S
Range w/Oven - 3-Burner Drop-In	O	O	O	O	O
Microwave Convection Stainless Steel Over the Range	S	S	S	S	S
Tile Backsplash	S	S	S	S	S
Large Galley Window w/Tiled Window Box	S	S	—	S	S
Sink - Stainless Steel Deep Double Bowl Undermount	S	S	S	S	S
Solid Surface Sink Covers	S	S	S	S	S
Faucet w/Pullout Sprayer Residential Single Handle	S	S	S	S	S
Adjustable Shelves Throughout	S	S	S	S	S
Power Ceiling Vent - Fantastic®	S	S	S	S	S

Waste Basket	S	S	S	S	S
Manual Night Roller Shade	S	S	S	S	S
BEDROOM OR BUNK AREA	33C	35K	35P	36F	36FP
King Memory Foam Mattress	S	S	S	S	S
Bunk Beds (Multi-purpose Flip Bunk for Wardrobe and Seating w/Doors)	—	—	—	S	S
Designer Bedsread, Headboard, Pillow Shams & Pillows	S	S	S	S	S
C-PAP Machine Prep in Bedroom Overhead	S	S	S	S	S
120V/USB Ports	S	S	S	S	S
LAVY	33C	35K	35P	36F	36FP
Sink - Top-Mounted Porcelain	—	S	—	—	—
Sink - Top-Mounted Stainless Steel	S	S	S	S	S
Residential Faucet Single Handle	S	S	S	S	S
Medicine Cabinet w/Mirror	S	S	S	S	S
Fiberglass Shower Surround	S	S	S	S	S
Glass Shower Door	S	S	S	S	S
Shower Skylight	S	S	S	S	S
Metal Shower Head w/Sliding Adjustable Bar, Soap Dish/Matching Single Valve Faucet	S	S	S	S	S
Macerator Toilet - Porcelain	S	S	—	S	—
VacuFlush Toilet - Porcelain	—	—	—	—	S
Standard Toilet - Porcelain	—	—	S	—	—
Power Ceiling Vent - Fan-Tastic®	S	S	S	S	S
ENTERTAINMENT	33C	35K	35P	36F	36FP
40" Flat Screen LED TV (Living Area)	S	S	S	S	S
32" Flat Screen LED TV (Bedroom)	S	S	S	—	—
24" Flat Screen LED TV (Bedroom)	—	—	—	S	S
24" Flat Screen LED TV (Bunk Area)	—	—	—	S	S
24" Flat Screen LED TV (Front Overhead w/Hide-A-Loft™ Drop Down Bed)	O	O	O	O	O
HDMI Video Distribution	S	S	S	S	S
Soundbar w/Blu-Ray™ Player	S	S	S	S	S
Exterior Entertainment Center w/40" LED TV, AM/FM/CD/DVD/BT, and Two Speakers	S	S	S	S	S
ELECTRIC & UTILITIES	33C	35K	35P	36F	36FP
A/C - Dual 15,000-BTU Units w/ Chill Grill and Rear Heat Pump	S	S	S	S	S

Furnace - 34,000 BTU	S	S	S	—	—
Dual Furnace 30,000/20,000 BTU	—	—	—	S	S
50 AMP Service	S	S	S	S	S
60 AMP Power Converter	S	S	S	S	S
Inverter - Single 2000w Pure Sine	S	S	S	S	S
WiFiRanger™ Sky4	S	S	S	S	S
WiFiRanger™ SkyPro Pack w/LTE and GPS	O	O	O	O	O
100w Solar Panel	S	S	S	S	S
265w Solar Panel	O	O	O	O	O
Multiplex Wiring Control System w/7" Touchscreen Panel and App Control	S	S	S	S	S
Auxiliary Batteries 6V (4)	S	S	S	S	S
Neutral Loss Protection	S	S	S	S	S
Generator - 5.5kW Onan®	S	S	S	S	S
Auto Gen Start	S	S	S	S	S
Master Battery Disconnect Switch	S	S	S	S	S
Water Pump - 12V 3GPM High Capacity Shurflo® Water Pump	S	S	S	—	—
Water Pump - 12V 5.3GPM High Capacity AquaJet Water Pump	—	—	—	S	S
Water Purification System	S	S	S	S	S
Water Heater Bypass System	S	S	S	S	S
Exterior Shower	S	S	S	S	S
Cable TV/Satellite Hookup	S	S	S	S	S
Black Holding Tank Flush System - San-T-Flush	S	S	S	S	S
Single Location Monitor Panel w/LPG, Touch Sensor Tank Monitoring/Battery Readouts	S	S	S	S	S
Fire Extinguisher, LP/CO and Smoke Detectors	S	S	S	S	S
GFCI Receptacle in Exterior Storage	S	S	S	S	S
Washer/Dryer - Combo	O	O	—	O	—
Washer/Dryer - Stackable	—	—	S	—	—
Washer/Dryer Prep - Combo	S	S	—	S	—
Water Heater Bypass System - 10 gal	S	S	S	—	—
Water Heater-Tankless	—	—	—	S	S
50 AMP Shoreline Power Cord	S	S	S	S	S





**RENEWABLE SAFE POWER**  
Save money on electricity with a 100w or optional 265w solar panel that allows you to explore untethered.

**WIFI RANGER™ SKY4 DC**  
Boost a weak signal to get online in no time with this private secure WiFi booster.



**WIFI RANGER™ SKY4 PROPACK w/LTE**  
Upgrade to this cellular internet modem that includes a cell booster and GPS upgrade.



**HIDE-A-LOFT™ DROP DOWN BED**  
Invite more guests on your road trip without compromising space with this queen bed, featuring industry-leading headroom and up to 500lb capacity.



**CPAP READY**  
This convenient storage solution is specifically designed to organize and conceal CPAP machines while allowing for easy access and opening for hoses.



**AUTOMOTIVE-STYLE COCKPIT**  
Drive in comfort and ease in this automotive inspired designed dash and cockpit with dual monitors, drivers seat with reclining back, swivel and six-way power controls. Steering wheel with tilt column, electric cruise control and Kenwood® stereo with bluetooth®.



**50 AMP ENERGY MANAGEMENT SYSTEM**  
Protect your RV against the expensive electrical damage and enjoy the convenience of an auto generator start to charge batteries when they need some juice.



**UPGRADED REAR SUSPENSION**  
SumoSprings® are designed to enhance load carrying ability, stabilize sway, and improve overall driver control and ride comfort. SumoSprings are a load support product that can be used in the front or rear of your vehicle to provide additional load support while preventing common issues like sagging and bottoming out.



**OUR VERY OWN FLEETWOOD RV MOTORHOME SERVICE CENTERS**

At Fleetwood RV, we strive to deliver peace-of-mind at every turn. Our devotion to customer service starts with our trusted dealer network and spans to our own staff of motorhome service professionals at REV Recreation Group's regional technical centers. The motorhome service centers are strategically located throughout the United States to provide you convenient service wherever the road takes you.

Below, you'll find the closest motorhome service center, as well as a list of the other centers. Please visit [www.fleetwoodrv.com/motorhome-service-centers](http://www.fleetwoodrv.com/motorhome-service-centers) to schedule a Service Appointment.

East Coast  
REV Technical Center  
**800-509-3417**

West Coast  
REV Technical Center  
**877-466-6226**

**ROADSIDE ASSISTANCE. ANYWHERE. ANYTIME.**

24/7 CUSTOMER SUPPORT FOR:

- FUEL
- BATTERY
- LOCKSMITH
- TOWING
- SLIDE-OUT ISSUES
- AND MUCH MORE!

**1-855-268-0414**

One-year of REV Assist is free with the purchase of any new 2020 Fleetwood. You may extend your coverage after the first year at [www.revgroup.com/rev-assist](http://www.revgroup.com/rev-assist).

**BOUNDER**

CHASSIS	33C	35K	35P	36F	36FP
Wheelbase (inches)	208"	228"	252"	242"	242"
Front GAWR (lbs)	8,000	8,000	9,000	9,000	9,000
Rear GAWR (lbs)	15,000	15,000	15,500	15,500	17,500
GCWR (lbs)	26,000	26,000	30,000	30,000	30,000
GVWR (lbs)	21,000	23,000	26,000	26,000	58,600
Hitch Rating Weight (lbs)	5,000	5,000	5,000	8,000	8,000
Tongue Weight (lbs)	500	500	500	800	800
Fuel Capacity (gal)	80	80	80	80	80

DIMENSIONS AND CAPACITIES	33C	35K	35P	36F	36FP
Overall Length (inches)	34' 3"	36' 3"	36' 3"	38' 9"	39' 1"
Overall Height (with A/C)	12' 10"	12' 10"	12' 10"	12' 10"	12' 10"
Overall Width (maximum)	102"	102"	102"	102"	102"
Interior Height (maximum)	84"	84"	84"	84"	84"
Interior Width (maximum)	96"	96"	96"	96"	96"
Patio Awning Width (ft./in.)	18'	18'	15'	18'	18'
Interior Storage (cu. ft.)	123	126	144	171	171
Exterior Storage (cu. ft.)	160	180	138	170	170
Fresh Water Holding Tank (gal)	100	100	100	100	100
Grey Water Holding Tank (gal)	58	58	46	90	90
Black Water Holding Tank (gal)	42	42	30	50	50
Appliance Propane Tank (gal) (WC)	25	25	25	25	25
Water Heater Tank (gal)	10	10	10	NA	NA

Product information, photography and illustrations included in this publication were as accurate as possible at the time of printing.

**FORD® CHASSIS**  
Model: Ford®  
Engine: 6.8L Triton V10  
Transmission: Ford® 6-Speed, Automatic w/Overdrive  
Alternator: 175 Amp  
Torque: 460 lb.-ft. @ 3,000 RPM  
Horsepower: 320HP @ 3,900 RPM

**DISCLAIMERS**  
1. GVWR (Gross Vehicle Weight Rating) is the maximum permissible weight of this fully loaded motor home. The GVWR is equal to or greater than the sum of the (UVW) unloaded vehicle weight plus the (OCCC) occupant cargo-carrying capacity.  
2. GAWR (Gross Axle Weight Rating) is the maximum permissible loaded weight a specific axle is designed to carry.  
3. GCWR (Gross Combined Weight Rating) is the value specified by the motor home manufacturer as the maximum allowable loaded weight of this motor home with its towed vehicle. Towing and braking capacities may be different. Refer to Fleetwood and chassis manufacturer's manuals for complete information.  
4. Length measured from front bumper to rear bumper (excludes accessories).  
5. Excludes safety equipment and awnings.  
6. Motor homes feature a body width over 96" which will restrict your access to certain roads. Before purchasing, you should research any state and/or province road laws which may affect your usage.  
7. Tank manufacturer's listed water capacity (WC). Actual propane capacity is 80% of water listing as required by the safety code.  
† The chassis manufacturer recommends the installation of a supplemental brake control system to activate the brakes on the vehicle or trailer you are towing. Hitch receiver ratings expressed are maximum for the hitch receiver installed and may require the purchase of additional equipment that is dependent on the weight of the towed load. Consult with hitch receiver manufacturer for further information.  
\* UVW and OCCC are found on the label containing the federal certification tag in each RV.  
\*\* Seatbelts and locations are shown in the brochure for display purposes only. Actual numbers and locations will vary by model.  
\*\*\* All 2020 REV Recreation Group motorhomes include a limited one year/15,000-mile coach warranty and three-year/45,000-mile structural warranty, whichever occurs first, and is fully transferable for the first 12 months.

**FLEETWOOD MOTORHOME ASSOCIATION**  
As a Fleetwood RV owner, you're invited to become a member of the Fleetwood Motorhome Association (FMA). Becoming a member is the perfect way to meet other Fleetwood owners who love to travel across America and share in the RV lifestyle. Visit the FMA website at [www.fma4fun.org](http://www.fma4fun.org) to learn more and join the fun.

**CONTACT US**  
To locate a dealer near you, visit our website at [www.fleetwoodrv.com](http://www.fleetwoodrv.com) or call 1-800-322-8216. We can also be contacted at Fleetwood RV Customer Relations, P.O. Box 1007, Decatur, IN 46733.

**IMPORTANT—PLEASE READ:** Product information, photography and illustrations included in this publication were as accurate as possible at the time of printing. For further product information and changes, please visit our website at [www.fleetwoodrv.com](http://www.fleetwoodrv.com) or contact your local Fleetwood RV dealer. Prices, materials, design and specifications are subject to change without notice. All weights, fuel, liquid capacities and dimensions are approximate. Fleetwood RV has designed its recreational vehicles to provide a variety of uses for its customers. Each vehicle features optimal seating, sleeping, storage and fluid capacities. The user is responsible for selecting the proper combination of loads (i.e., occupants, equipment, fluids, cargo, etc.) to ensure that the vehicle's capacities are not exceeded.



YOUR LOCAL DEALER



Fleetwood RV is part of REV Recreation Group, a division of REV Group, Inc., a family of 29 industry-leading motor vehicle brands. At REV Group, we innovate, design and build products that connect and protect thousands of people every day—our trusted vehicles are engineered with the utmost rigor and precision to deliver the highest levels of performance, reliability, durability and safety.



IMPORTANT—PLEASE READ: Product information, photography and illustrations included in this publication were as accurate as possible at the time of printing. For further product information and changes, please visit our website at [www.fleetwoodrv.com](http://www.fleetwoodrv.com) or contact your local Fleetwood RV dealer. Prices, materials, design and specifications are subject to change without notice. All weights, fuel, liquid capacities and dimensions are approximate. Fleetwood RV has designed its recreational vehicles to provide a variety of uses for its customers. Each vehicle features optimal seating, sleeping, storage and fluid capacities. The user is responsible for selecting the proper combination of loads (i.e., occupants, equipment, fluids, cargo, etc.) to ensure that the vehicle's capacities are not exceeded.

[www.fleetwoodrv.com](http://www.fleetwoodrv.com)

©2019 REV Group, Inc. Printed in the USA. 10/19. Model Year 2020, First Edition.

Part #: L93-0026