

MID-PROFILE FIFTH WHEELS
SUPER-LITE FIFTH WHEELS & TRAVEL TRAILERS
keystonerv.com/laredo

LAREDO



The ultimate
ownership experience.

The ultimate ownership experience.

The goal of Keystone RV Company is to surprise and delight our owners at each and every touchpoint. We're happy when our campers are happy, and we are committed to providing the very best ownership experience in the industry.



**Keystone RV
Company**

1 EASIER SHOPPING.

At Keystone, we make choosing an RV as easy as finding the Big Dipper on a dark summer night. With comprehensive online product information, Key Connect™ product advisors, and an unparalleled dealer network, we will help you select the perfect RV for your family's adventure.

2 INNOVATIVE THINKING.

The road's a nicer place when you have the industry's smartest features behind you. Keystone leads the pack in patented innovations that make our RVs safer, more comfortable, and easier to operate.

3 LONG HAUL QUALITY.

To keep you on the road, there are certain things we just won't build a Keystone RV without. Game-changing features like our Unified Wiring Standard, Tru-Fit™ five-point slide construction, and no-fail Tuf-Lok™ A/C duct joiners combined with exhaustive testing and inspections are some of the reasons why Keystone is able to offer our owners the industry's best 3-year limited structural warranty.

4 WORRY-FREE CUSTOMER SERVICE.

Wherever the road takes you, you're never too far from an authorized Keystone service center. We also offer live service assistance, ultra-fast parts shipping, online maintenance tips and tricks, and a single-point warranty claims policy. *That's* peace of mind.

5 KEYSTONE NATION.

When you choose Keystone, you become a part of one of the largest camping families in the country. We're Keystone Nation. A friendly community where people share photos, travel tips and amazing stories – all in the spirit of camaraderie and adventure. Come join us.

Experience the Laredo lifestyle by visiting [#keystonelaredo](#)



LAREDO



TRAVEL TRAILERS | SUPER-LITE FIFTH WHEELS | MID-PROFILE FIFTH WHEELS

As the camping lifestyle has evolved, so has Laredo.

From newlyweds, to young families, to families with active teens, to empty-nesters — each and every family will meet their perfect match in Laredo's affordable lineup of travel trailers, super-lite fifth wheels and mid-profile fifth wheels. Laredo features contemporary interior styling, family-friendly floorplans, and upscale amenities in sync with today's lifestyles. Once you have owned one, you'll know why Laredo is the family you choose, year after year.

Keystone EXCLUSIVE Innovations

Year after year, Keystone RV's experienced team delivers Built For the long haul quality you expect and exclusive innovations you won't find anywhere else.



**3-year Limited Structural Warranty,
1-year Limited Base Warranty**

Every new Keystone RV comes with the industry's best three-year limited structural warranty AND a one-year limited base warranty. Ask your dealer, visit keystonerv.com, or call Keystone Owner Relations for details.



4G LTE and Wi-Fi Prep

All Laredos are equipped with a new antenna that integrates 4G LTE and Wi-Fi with standard VHF/UHF/AM/FM reception.



KeyTV™

No more connection guesswork or poor reception. KeyTV offers a game-changing, single point of control of over-the-air, cable, and satellite feeds. Visit us online for more information.



Color-Coded Wiring Standard

Easy-to-trace circuits simplify electrical and entertainment system troubleshooting.



Hitch Vision™

Simplifies hitch hook-up with "no looking back" convenience.



In-floor Heating Ducts

Distributes heat evenly for greater comfort.



Road Armor™ Suspension

Equalizes axle load to dampen shock and vibration.



Tru-Fit™ Slide Construction

A more durable slide room design that minimizes functional motor and structural stress, resists leaking.

Exceptional Comfort

A relaxing space for family time and to reenergize after the day's adventures.



Grill 'n Chill Outside Kitchen (select models)
Outdoor entertaining at its finest with a 32" television, 3 cu. ft. refrigerator, stovetop and microwave.



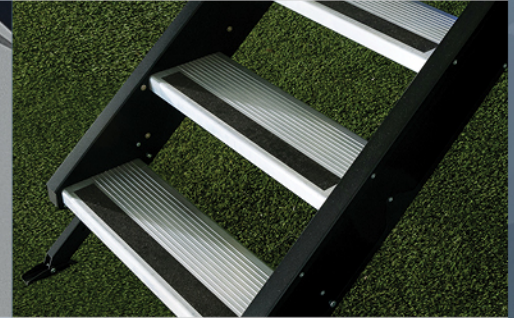
Master Bedroom with Storage to Spare
Hanging wardrobes on either side of the bed, under-bed storage and spacious overhead cabinets.



Furrion® Kitchen Appliances
Laredo's recessed range and glass cooktop deliver a modern aesthetic and precise performance.



Frameless Windows
Sleek and stylish windows are designed with rubber gaskets behind the glass for increased glass and seal strength.



Lippert SolidStep™
Safe and secure with an extra-wide top step and "Lift & Level" technology ensuring that steps stay parallel to the ground.



Double-Over-Double Bunkhouse
Family-sized bunkhouse with convenient exterior access to under-bunk storage.



Solid Surface Countertops (mid-profile models only)
Seamless, durable countertops that are moisture and heat-resistant—perfect for active families.



Modern Fireplace
Quickly warm up on chilly mornings and cool evenings with our 5,200 BTU fireplace.



Automotive Grade Painted Fiberglass Cap
Laredo caps include Keystone's exclusive KeyGuard™ protective coating, designed to provide chip and rock protection.

Durable by Design

With resilient features and practical styling, Laredo's are built for active campers.



more product detail at
www.keystonerv.com/laredo



Unexpected. Modern. Inviting.

That's what you'll experience when you first walk into a Laredo. These upscale coaches make a clean break from traditional design with textural linen-look wall coverings, honed wood inspired flooring, contemporary frosted glass doors, sleek and structural stainless cabinet handles, white solid surface countertops w/ natural movement in the material, and high-rise pullout kitchen faucet.

Comfortable & Flexible

Multi-functional living area is designed for comfort and an optimal entertainment experience.



Spacious & Accommodating

Family-sized kitchen and bathroom cabinets provide exceptional storage.





more product detail at
www.keystonerv.com/Laredo

Laredo | TRAVEL TRAILERS

- Electric stabilizing jacks with electric tongue jack
- Furrion® backup camera prep and solar panel prep
- Full front painted cap with Rock Guard coating
- Road Armor™ suspension system with 360° vibration control
- 50 AMP service with second A/C prep and wire
- Fully enclosed underbelly with forced-air heat
- Large lighted pass-through storage w/metal slam latches
- Grill 'n Chill outside kitchen and entertainment area (select models)
- LCI Solid Step® on all entrances
- Oversized friction hinge door
- Arched roof, ceiling and rafters
- Frameless windows
- LED lighting throughout
- Kitchen island with dual pull-out trash bins and three drawers
- Furrion® recessed range with glass cooktop cover
- Dual 8 cu. ft. refrigerator (select models)
- Upgraded 5200 BTU fireplace (most models)
- Quick recovery, gas/electric water heater
- USB outlets in kitchen and all bedrooms
- King bed standard (N/A 330RL)



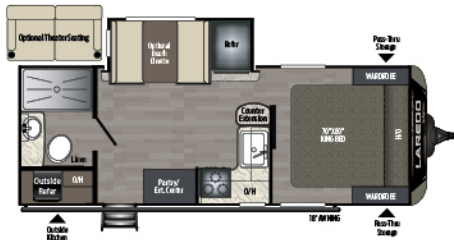
Lighted Pass-through Storage
Keep everything for your adventures in a well-lit storage.



Solar Prep
Easily add solar power with wiring in place for roof-mounted panels and interior controls.



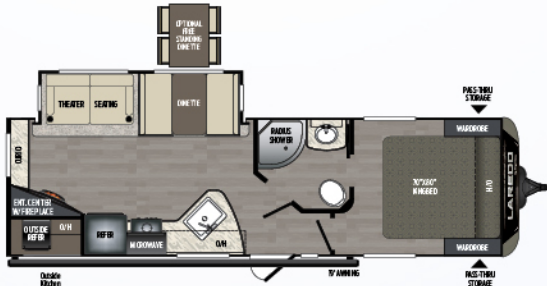
Furrion® Backup Camera Prep
Wired and ready for the additional safety and peace-of-mind that comes adding a back-up camera to your coach.



225MK | Short rear bath w/ slide room and outside kitchen
Weight: 5792 lbs | Length: 26' 11"



275RL | Rear living room, double slide
Weight: 6440 lbs | Length: 31' 11"



287RL | Rear living, outside kitchen
Weight: 6904 lbs | Length: 33' 9"



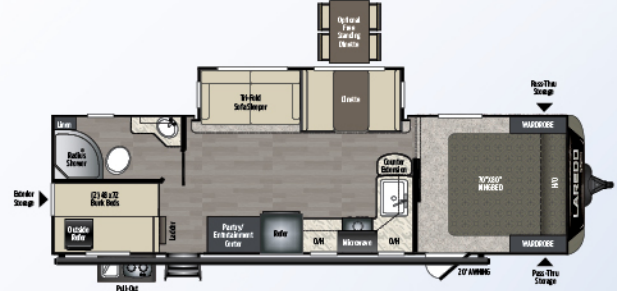
330RL | Rear living room, triple slide
Weight: 8435 lbs | Length: 37'



332BH | Triple slide bunkhouse, outside kitchen
Weight: 8619 lbs | Length: 38'



280RB | Rear bathroom, double slide, outside kitchen
Weight: 7090 lbs | Length: 32' 5"



292BH | Double bunkhouse, outside kitchen
Weight: 6904 lbs | Length: 33' 9"



331BH | 1-1/2 bath, outside kitchen, bunkhouse
Weight: TBD lbs | Length: 37' 10"



335MK | Double refrigerator, triple slide, king bed
Weight: 8607 lbs | Length: 38'



more product detail at
www.keystonerv.com/Laredo

Laredo | SUPER-LITE FIFTH WHEELS

- Electric auto-level with hitch memory
- Hitch Vision™ technology in molded fiberglass cap
- Furrion® backup camera prep and solar panel prep
- Road Armor™ suspension system with 360° vibration control
- 50 AMP service with second A/C prep and wire
- Fully enclosed underbelly with forced-air heat
- Lighted and heated pass-through storage w/metal slam latches
- 2" receiver hitch with 300 lb. capacity
- Solid Step® by Lippert Components
- Oversized friction hinge door
- Arched roof, ceiling and rafters
- Frameless windows
- LED lighting throughout
- Kitchen island with dual pull-out trash bins and three drawers
- Furrion® recessed range with glass cooktop
- Upgraded 5200 BTU fireplace (select models)
- 50" walk-in shower in all models
- Quick-recovery, gas/electric water heater
- USB outlets in kitchen and all bedrooms



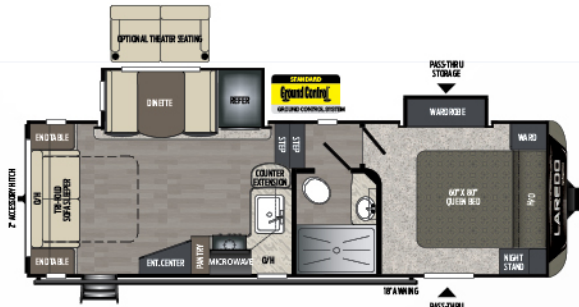
Max Turn Technology™
The design of the front cap provides you with a better turning radius than the competition, making parking and maneuvering a breeze.



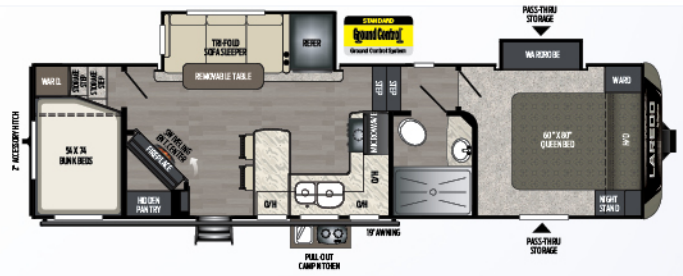
Ground Control Auto Level
Electric leveling jacks level your RV in two minutes or less.



EXCLUSIVE Hitch Vision™
Simplifies hitch hook up with "no looking back" convenience.



255SRL | 28-foot, rear living room, two slides
Weight: 7113 lbs | Length: 27' 7"



284SBH | Bar stool eat-in kitchen, hidden pantry, outside kitchen
Weight: 8265 lbs | Length: 32' 5"



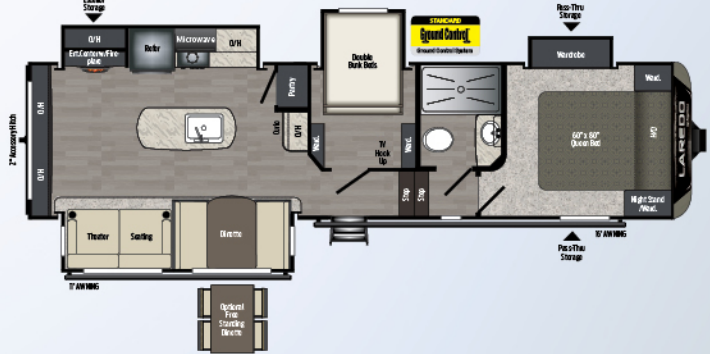
290SRL | Triple slide, two refrigerators
Weight: 8722 lbs | Length: 33' 1"



291SMK | Triple slide, two refrigerators
Weight: 8726 lbs | Length: 33' 1"



294SBR | National park friendly, tailgate approved, triple slide
Weight: 8920 lbs | Length: 33' 5"



296SBH | Quad slide, middle bunkhouse
Weight: 9335 lbs | Length: 33' 9"



298SRL | Triple slide, outside kitchen
Weight: 8911 lbs | Length: 34' 1"



more product detail at
www.keystonerv.com/Laredo

Laredo

MID-PROFILE FIFTH WHEELS

- Electric auto-level with hitch memory
- Hitch Vision™ technology in molded fiberglass cap
- Furrion® backup camera prep and solar panel prep
- Road Armor™ suspension system with 360° vibration control
- 50 AMP service with second A/C prep and wire
- Lighted and heated pass-through storage with metal slam latches
- 2" receiver hitch with 300 lb capacity
- Solid Step® by Lippert Components, main entry steps
- Frameless windows
- LED lighting throughout
- Kitchen island with dual pull-out trash bins and three drawers (select models)
- Solid surface countertops with stainless steel sink
- Furrion® recessed range with glass cooktop cover
- Four-door 18 cu ft gas/electric refrigerator
- 30" residential microwave
- 50" television in living room
- Washer/dryer prepped, all models
- Upgraded 5200 BTU fireplace, all models
- One-piece oversized residential shower surround
- 16.2 gallons per hour, quick-recovery, gas/electric water heater
- 70" x 80" king beds (N/A 353FL)
- USB outlets in kitchen and all bedrooms



Ground Control Auto Level
Electric leveling jacks level your RV in two minutes or less.



Furrion® Kitchen Appliance
Modern aesthetics and precise performance.



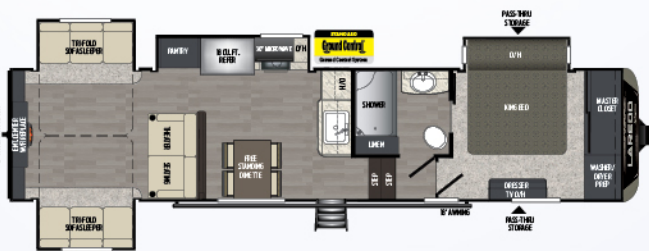
Washer/Dryer Prep
Ready to add a combo washer/dryer unit.



310RS | Rear living room, triple slide, king bed
Weight: 10479 lbs | Length: 35'1"



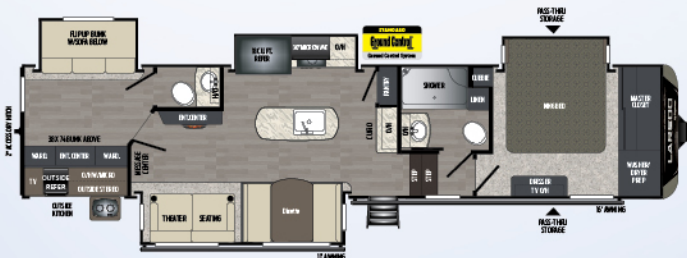
325RL | Rear living, triple slide, outside kitchen
Weight: 10876 lbs | Length: 36'3"



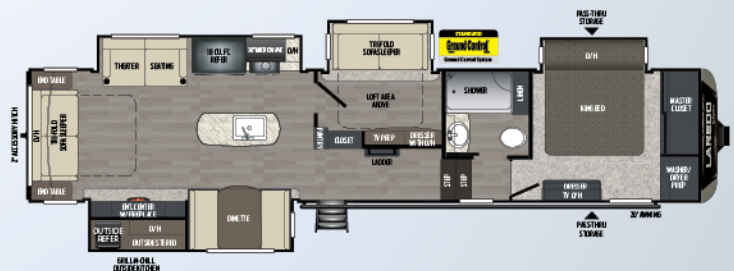
342RD | Rear den, four slides
Weight: 11086 lbs | Length: 37'11"



353FL | Front living, rear slide-out storage tray
Weight: 11630 lbs | Length: 39'8"



367BH | 1-1/2 bath, bunkhouse, outside kitchen
Weight: 12131 lbs | Length: 39'4"



380MB | Bonus room w/ loft
Weight: 12773 lbs | Length: 41'1"

MID-PROFILE FIFTH WHEELS

MODEL	WEIGHT	CARRYING CAPACITY	HITCH WEIGHT	FRESH WATER	WASTE WATER	GRAY WATER	LPG	LENGTH*	WIDTH	HEIGHT	AWNING
310RS	10479	2521	1670	66	44	78	60	35' 1"	8'	13'	16'
325RL	10876	2124	1910	66	44	78	60	36' 3"	8'	13'	16'
342RD	11086	1914	2065	66	44	78	60	37' 11"	8'	13'	18'
353FL	11630	2670	2300	66	34	68	60	39' 8"	8'	13' 2"	14'/14'
367BH	12131	2229	2365	66	78	78	60	39' 4"	8'	13'	16'/11'
380MB	12773	2727	2385	66	44	78	60	41' 1"	8'	13' 2"	20'

SUPER LITE FIFTH WHEELS

MODEL	WEIGHT	CARRYING CAPACITY	HITCH WEIGHT	FRESH WATER	WASTE WATER	GRAY WATER	LPG	LENGTH*	WIDTH	HEIGHT	AWNING
255SRL	7113	2887	1375	43	30	60	60	27' 7"	8'	12' 8"	18'
284SBH	8265	2085	1565	43	30	30	60	32' 5"	8'	12' 8"	19'
290SRL	8722	1438	1360	43	30	60	60	33' 1"	8'	12' 8"	13'/11'
291SMK	8726	1474	1435	43	30	60	60	33' 1"	8'	12' 8"	14'/11'
294SBR	8920	1430	1575	43	30	60	60	33' 5"	8'	12' 10"	16'/11'
296SBH	9335	1265	1920	43	30	60	60	33' 9"	8'	12' 10"	16'/11'
298SRL	8911	1089	1410	43	30	60	60	34' 1"	8'	12' 8"	14'

TRAVEL TRAILERS

MODEL	WEIGHT	CARRYING CAPACITY	HITCH WEIGHT	FRESH WATER	WASTE WATER	GRAY WATER	LPG	LENGTH*	WIDTH	HEIGHT	AWNING
225MK	5792	2208	725	43	30	60	60	26' 11"	8'	11' 2"	18'
275RL	6440	2160	770	43	30	60	60	31' 11"	8'	11' 2"	18'
280RB	6970	1830	870	43	30	60	60	32' 5"	8'	11' 2"	19'
287RL	6870	1930	740	43	30	60	60	32' 9"	8'	11' 2"	19'
292BH	6904	1896	815	43	30	60	60	33' 9"	8'	11' 2"	20'
330RL	8435	1565	1085	43	30	60	60	37'	8'	11' 4"	11'
331BH	TBD	TBD	TBD	43	30	60	60	37' 10"	8'	11' 4"	11'/10'
332BH	8619	1351	1175	43	30	60	60	38'	8'	11' 4"	8'/11'
335MK	8607	1373	1185	43	30	60	60	38'	8'	11' 1"	14'/11'

DISCLAIMER: Product information is as accurate as possible as of the date of publication of this brochure. All features, floor plans, and specifications in this brochure are subject to change without notice. Please also consult Keystone's web site at www.keystonerv.com for more current product information and specifications. Tow Vehicle Disclaimer. CAUTION: Owners of Keystone recreational vehicles are solely responsible for the selection and proper use of tow vehicles. All customers should consult with a motor vehicle manufacturer or their dealer concerning the purchase and use of suitable tow vehicles for Keystone products. Keystone disclaims any liability or damages suffered as a result of the selection, operation, use or misuse of a tow vehicle. KEYSTONE'S LIMITED WARRANTY DOES NOT COVER DAMAGE TO THE RECREATIONAL VEHICLE OR THE TOW VEHICLE AS A RESULT OF THE SELECTION, OPERATION, USE OR MISUSE OF THE TOW VEHICLE. *Length is defined as the distance from the centerline of hitch pin/coupler to rear bumper of trailer. Please review owner's manual prior to purchase for more information on service warranties, extended use, towing and maintenance. Owner's manuals can be found at keystonerv.com.



more product detail at
www.keystonerv.com/Laredo

STANDARDS AND OPTIONS

	FW	SLFW	TT
EXTERIOR			
Frameless windows	●	●	●
Aerodynamic painted front cap	●	●	●
2" rear accessory hitch with 300 lb. capacity	●	●	
Fully enclosed and heated underbelly and tanks	●	●	●
Oversized lighted and heated pass-through storage	●	●	●
Exterior shower with hot & cold water	●	●	●
Rear ladder	●	●	●
Solid Step® by Lippert Components	●	●	●
Hitch assist mirror & 2 LED lights w/Max Turn Technology™	●	●	
Outside 110V outlet & TV connection	●	●	●
Water works utility center	●	●	●
Battery disconnect	●	●	●
Solar panel prep	●	●	●
Backup camera prep	●	●	●
Electric slide out system w/manual override	●	●	●
Adjustable extended hitch pin	●	●	
Dexter® E-Z Lube axles®	●	●	●
INTERIOR			
Booth dinette with storage below (optional)		●	●
Residential-grade carpet	●	●	●
MCD roller shades	●	●	●
Designer window treatments	●	●	●
Solid wood mortise & tenon cabinet doors	●	●	●
Friction hinge entry door with built-in shade prep	●	●	●
Tri-fold sleeper sofa	●	●	●
KITCHEN			
Large overhead cabinets	●	●	●
Sink covers	●	●	●
Residential stainless steel sink	●	●	●
High-rise faucet with pull-out sprayer	●	●	●
Vinyl floor with cold crack warranty	●	●	●
Ball bearing full extension drawer guides	●	●	●
BATHROOM			
Large residential size showers (most models)	●	●	●
Foot flush porcelain toilet	●	●	●
Medicine cabinet	●	●	●
Shower skylight	●	●	●

TT Laredo Travel Trailers
 SLFW Laredo Super-Lite Fifth Wheels
 FW Laredo Mid-Profile Fifth Wheels

	FW	SLFW	TT
BEDROOM			
King bed (N/A 330RL, 353FL)	●		●
60" x 80" queen mattress		●	
70" x 80" king mattress	●		●
Wardrobe storage	●	●	●
Reading lights	●	●	●
TV hook-up	●	●	●
Washer/dryer prep	●		
APPLIANCES AND UTILITIES			
12V AM/FM/CD/DVD home theater system w/Bluetooth	●	●	●
18 cu ft refrigerator	●		
8 cu ft refrigerator		●	●
30" microwave with carousel	●		
Microwave with carousel		●	●
15,000 BTU ducted air conditioner	●	●	●
Furrion® range and oven recessed with glass cover	●	●	●
2-30 lb. LP bottles with auto changeover	●	●	●
35,000 BTU high-output furnace with auto ignition	●	●	●
LED interior ceiling and exterior awning lights	●	●	●
12-gallon gas and electric hot water heater	●		
Systems monitor panel	●	●	●
KeyTV™ multisource TV controller system	●	●	●
Arched ceiling		●	●
SAFETY FEATURES			
Breakaway switch	●	●	●
Tinted safety glass windows	●	●	●
GFI receptacles	●	●	●
Carbon monoxide detector	●	●	●
Smoke detector	●	●	●
Propane gas leak detector	●	●	●
Fire extinguisher	●	●	●
BLACK LABEL PACKAGE			
Automatic electric leveling system	●	●	
Electric stabilizer jacks front & rear w/electric hitch			●
Road Armor™ suspension system	●	●	●
SolidStep® by Lippert Components	●	●	●
Solid-surface countertops	●	●	●
LIFE SIZE PACKAGE			
Large showers	48"-50"	50"	34"-50"
50 AMP service, wired and braced for 2nd air conditioner	●	●	●
Refrigerator	18 cu. ft.	8 cu. ft.	8 cu. ft.
Road Armor™ suspension system	●	●	●
OPTIONS			
2nd 13.5K BTU air conditioner	●	●	●
Free-standing dinette and chairs	●	●	●
Dual pane windows	●	●	●

BUILT FOR THE LONG HAUL



PRINT 12.2019

