

TRAVEL TRAILERS | FIFTH WHEELS

keystonerv.com/sprinter

SPRINTER



The ultimate
ownership experience.

The ultimate ownership experience.

The goal of Keystone RV Company is to surprise and delight our owners at each and every touchpoint. We're happy when our campers are happy, and we are committed to providing the very best ownership experience in the industry.



**Keystone RV
Company**

1 EASIER SHOPPING.

At Keystone, we make choosing an RV as easy as finding the Big Dipper on a dark summer night. With comprehensive online product information, Key Connect™ product advisors, and an unparalleled dealer network, we will help you select the perfect RV for your family's adventure.

2 INNOVATIVE THINKING.

The road's a nicer place when you have the industry's smartest features behind you. Keystone leads the pack in patented innovations that make our RVs safer, more comfortable, and easier to operate.

3 LONG HAUL QUALITY.

To keep you on the road, there are certain things we just won't build a Keystone RV without. Game-changing features like our Unified Wiring Standard, Tru-Fit™ five-point slide construction, and no-fail Tuf-Lok™ A/C duct joiners combined with exhaustive testing and inspections are some of the reasons why Keystone is able to offer our owners the industry's best 3-year limited structural warranty.

4 WORRY-FREE CUSTOMER SERVICE.

Wherever the road takes you, you're never too far from an authorized Keystone service center. We also offer live service assistance, ultra-fast parts shipping, online maintenance tips and tricks, and a single-point warranty claims policy. *That's* peace of mind.

5 KEYSTONE NATION.

When you choose Keystone, you become a part of one of the largest camping families in the country. We're Keystone Nation. A friendly community where people share photos, travel tips and amazing stories – all in the spirit of camaraderie and adventure. Come join us.

Experience the Sprinter lifestyle by visiting [#keystonesprinter](#)



SPRINTER

RV LIFESTYLE REDEFINED



TRAVEL TRAILERS | FIFTH WHEELS

Sprinter dares to be different

Keystone RV's very first "camping made easy" brand, Sprinter uniquely combines wide-body construction and stand-out features to bring maximum comfort and convenience to your camping lifestyle. Bold interior styling, light wood finishes and oversized windows feel fresh and engaging. Unexpected amenities like bar-height seating and designer-inspired range hood are just part of why you'll look twice at a Sprinter. Built for customers who know what they like, take their own road, and never look back. Sprinter remains Keystone's true original.

Keystone EXCLUSIVE Innovations

Year after year, Keystone RV's experienced team delivers Built For the Long Haul quality you expect and exclusive innovations you won't find anywhere else.



3-year Limited Structural Warranty, 1-year Limited Base Warranty

Every new Keystone RV comes with the industry's best three-year limited structural warranty AND a one-year limited base warranty. Ask your dealer, visit keystonerv.com, or call Keystone owner relations for details.



4G LTE and Wi-Fi Prep

All units are equipped with a new antenna that integrates 4G LTE and Wi-Fi with standard VHF/UHF/AM/FM reception.



KeyTV™

No more connection guesswork or poor reception. KeyTV offers a game-changing, single point of control of over-the-air, cable, and satellite feeds. Visit us online for more information.



Color-Coded Wiring

Easy-to-trace circuits simplify electrical and entertainment system troubleshooting.



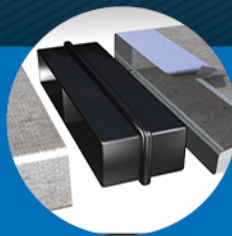
Automotive-Grade Painted Fiberglass Cap

Six layers of stunning and resilient automotive-grade paint with Key-Shield™ paint technology.



In-Floor Heating Ducts

Ducting allows for more airflow that distributes heat evenly for optimal comfort.



Tuf-Lok™ A/C Duct Joiners

Crush resistant design securely joins A/C ductwork, drastically reducing chilled-air leaks and boosting cooling efficiency and comfort.

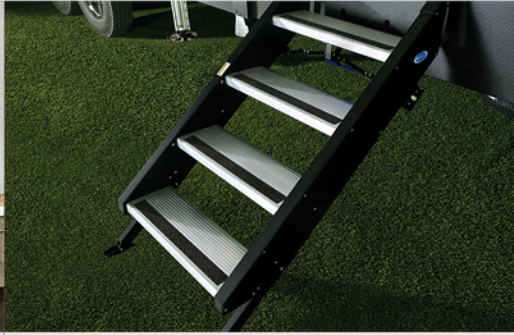


Tru-fit™ Slide Construction

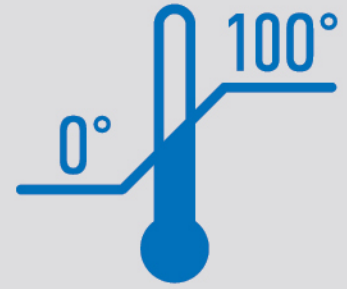
A more durable slide room design that minimizes functional motor and structural stress, resists leaking.



Solid Surface Countertops with Pull-Down Faucet
Durable and moisture-resistant marbled countertops with pull-down faucet.



MORryde® Step Above® Steps
Ultra safe and secure main entry with strut assist.



Independently Tested to Perform from 0-100 Degrees.
Stay comfortable when the weather gets extreme.



Wireless Remote Control
Go wireless and control your slideouts, lights, awnings and other features with the touch of a button.

STAND APART FEATURES FROM SPRINTER



Live Edge Tables (Select Models)
Stylish, contemporary and uniquely designed.

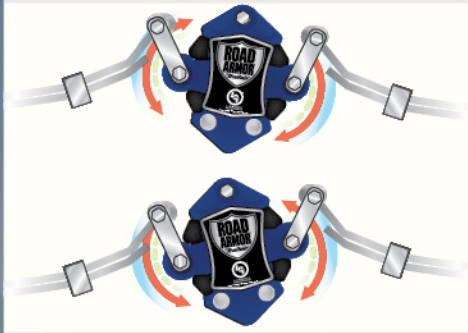


King Size Bed
Sleep comfortably on a 70" X 80" residential king mattress, available in mid-profile models.

keyed alike
One key works all your locks!



Keyed Alike System
Avoid confusion and increase accessibility by using one key for every lock.



EXCLUSIVE Road Armor™ Suspension
Equalizes axle load to dampen shock and vibration.



MaxxAir® Fan
Dual-purpose fan with rain sensor can run as a vent or a ceiling fan. Provides superior circulation throughout the coach.



Luxury Lighting
These vintage modern fixtures take center stage in your kitchen and living areas.



more product detail at
www.keystonerv.com/sprinter



Bold Elegance

Sprinter's unique design and forward-thinking décor creates a beautiful space for entertaining or for a relaxing getaway. We pay careful attention to every detail, from our best-in-class 100" wide-body right down to the crown molding around our cabinetry. We've implemented a new light and tranquil color-way across the lineup, blending cool greys, browns and whites to create an appealing, cohesive space. Along with updated décor, other jaw-dropping features like bar-height seating, and a stunning tile backsplash that perfectly frames a residential-size stainless steel range hood, are guaranteed to impress.

(Range hood available in Sprinter 320MLS, 3160/61FWRLS, 3550/51FWMLS.)

Wanderlust

Sprinter truly amplifies the magic of adventuring with ambient LED lighting and beautiful features exclusively found in the industry's only full-profile, wide body at a mid-profile price.





more product detail at
www.keystonerv.com/sprinter

CAMPING MADE EASY

TECH

- » USB's In Every Room (NEW)
- » Reading Light w/ USB port over bed (NEW)
- » Exterior TV mount (NEW)
- » Motion sensor lighting In pass-through & pantries (NEW)
- » Luxury pendant lights in kitchen / living area (NEW)
- » Multi-function wireless remote
- » Soundbar w/ hard-wired HDMI to TV
- » LED ambient lighting
- » Electric awning w/ speakers & LED lighting
- » Solar prep
- » Premium ventilation system w/ rain sensor
- » 4G LTE hotspot prep w/ Wi-Fi booster
- » Backup camera prep

PET & CAMPER COMFORT

- » Pet bed on all bed slide models (NEW)
- » Pet bowls w/ treat tray In kitchen (NEW)
- » Exterior dog leash holder (NEW)
- » XL RV & residential refrigerators (NEW)
- » Shaw carpeting w/ R2X Stain Guard
- » Scratch-resistant Congoleum flooring w/ 3-year warranty
- » MORryde® Step Above® steps @ all entry doors
- » 5K BTU fireplace (LTD STD, CF prepped)
- » Hinged booth seating = max storage access
- » Keyed alike system = one key opens ALL doors
- » Widest entry doors in the industry

FUNCTIONALITY

- » 100" wide body = more square footage without added length
- » Best-in-class towing protection w/ Road Armor 360-degree anti-shock equalizer
- » Road Armor™ anti-shock pin box
- » Premium Dexter® Axles w/ E-Z Lube bearing system & NEV-R-ADJUST Brakes, 6-year warranty
- » Aluminum wheels w/ lifetime warranty
- » Leading tank capacities (81 Gal fresh)
- » Best-in-class 40K BTU heating capability (LTD STD, CF prepped)
- » Dual-zone A/C system = 28.5K BTUs (CF, LTD TT OPT) (NEW)
- » Max Turn™ technology, decreases turning radius on fifth wheels by up to 30%

QUALITY

- » Super Flex one-piece roof membrane w/ 12-year warranty
- » Thickest exterior sidewalls in the industry
- » Thomas Payne™ tri-fold sofas and theater seating
- » Thickest booth seat backing
- » One-piece heated & enclosed underbelly
- » Heated pass-through storage (FW Only)
- » Best-in-class insulation package tested 0 - 100 degrees
- » Dynaspan flooring w/ 25-year transferable warranty
- » Painted front caps w/ Key-Shield™ technology

IN EVERY WAY

A Pet Oasis

Sprinter keeps campers and their four-legged friends in mind with these pet friendly features.



PET BED

Pull down bed keeps your pet cozy & folds away when not in use.



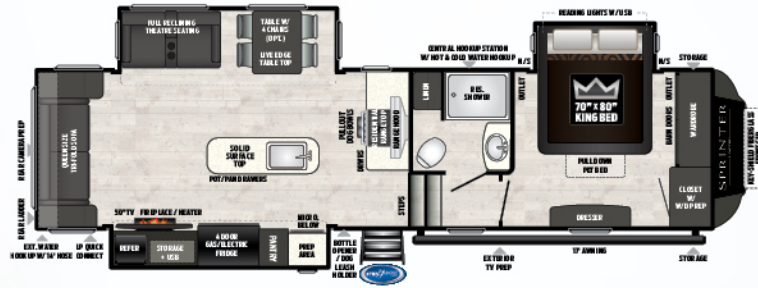
PET BOWLS

Bowls lift out of drawer for cleaning & extended storage.

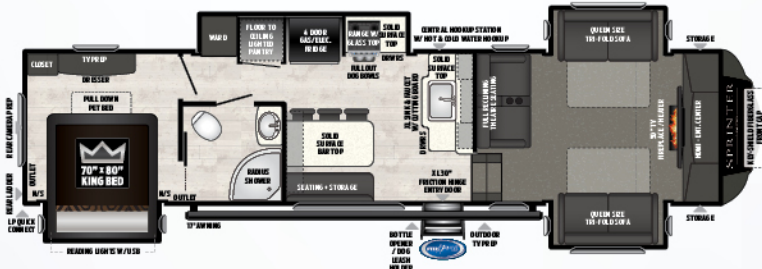


PET LEASH HOLDER

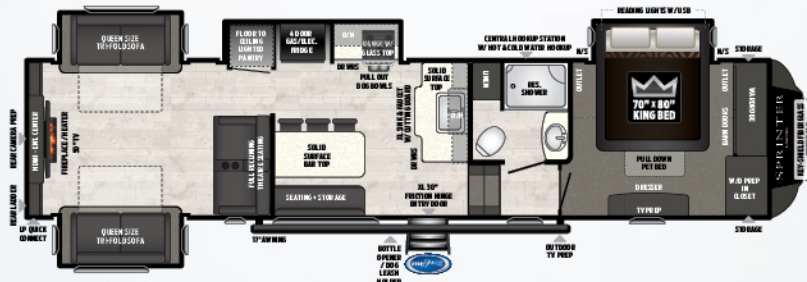
Doubles as a bottle opener and keeps your dog leash at the door where you need it most.



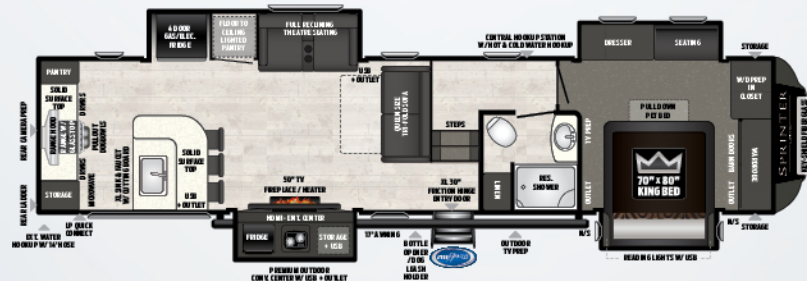
3160/61FWRLS | REAR LIVING ROOM W/ RESIDENTIAL RANGE HOOD, KING BED & O/S CONV. CENTER
 RV REFRIGERATOR | RES. REFRIGERATOR | Weight: 10585 LBS. | Length: 35' 3"



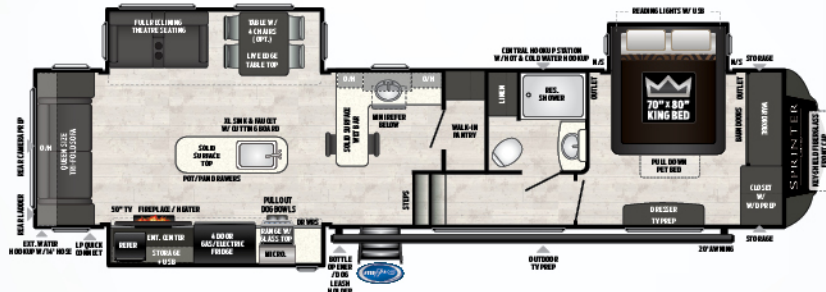
3340/41FWFLS | FRONT LIVING ROOM W/ BARTOP, TRI-FOLD SLEEPER SOFA, THEATER SEATING
 RV REFRIGERATOR | RES. REFRIGERATOR | Weight: 10510 LBS. | Length: 37' 10"



3530/31FWDEN | REAR DEN W/ BARTOP, TRI-FOLD SLEEPER SOFA, THEATER SEATING
 RV REFRIGERATOR | RES. REFRIGERATOR | Weight: 10831 LBS. | Length: 39' 0"



3550/51FWMLS | MID LIVING, BEST ENTERTAINING KITCHEN AREA & MASTER SUITE W/ SITTING AREA
 RV REFRIGERATOR | RES. REFRIGERATOR | Weight: 11038 LBS. | Length: 39' 0"

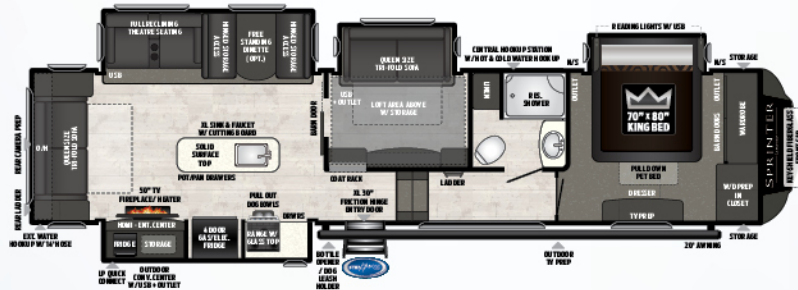


3560/61FWRLB

REAR LIVING W/ WET BAR, WALK-IN PANTRY & OUTDOOR CONVENIENCE CENTER

Weight: 11325 LBS. | Length: 39' 6"

RV REFRIGERATOR RES. REFRIGERATOR

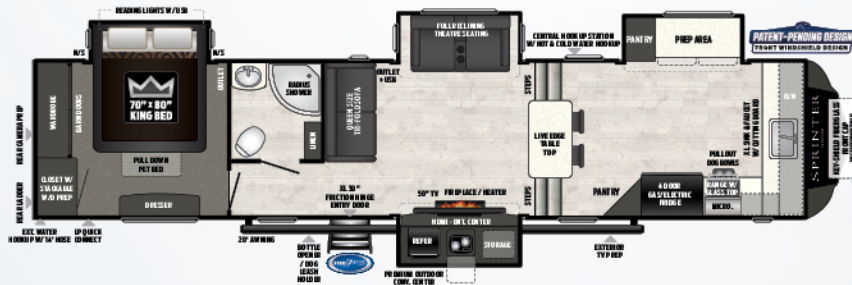


3570/71FWLFT

MID BUNKROOM W/ OVERHEAD LOFT, KING BED SLIDEOUT & OUTDOOR CONVENIENCE CENTER

Weight: 11449 LBS. | Length: 39' 6"

RV REFRIGERATOR RES. REFRIGERATOR

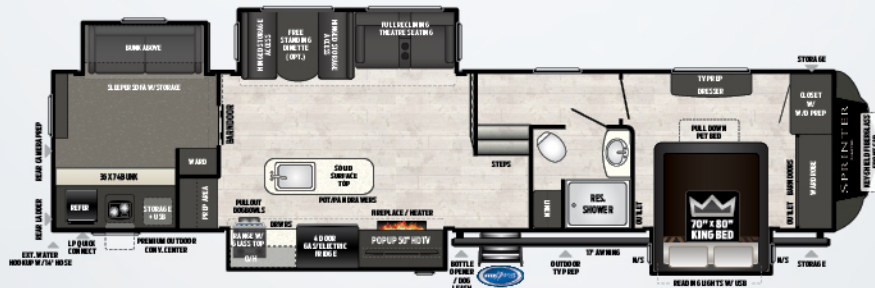


3610/11FWFKS

FIRST-IN-CLASS EXECUTIVE KITCHEN W/ STACKABLE W/D PREP

Weight: 11245 LBS. | Length: 40' 6"

RV REFRIGERATOR RES. REFRIGERATOR

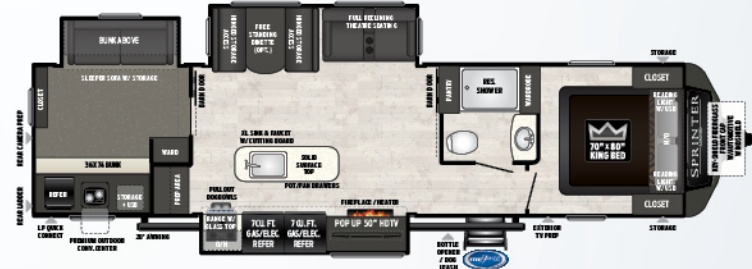
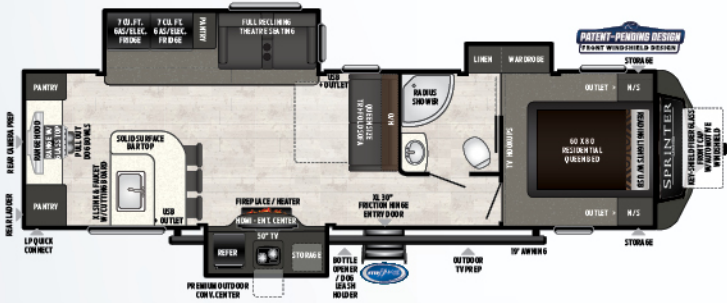


3620/21FWLHB

UNIQUE OPEN CONCEPT BUNKHOUSE FLOORPLAN

Weight: 11960 LBS. | Length: 40' 6"

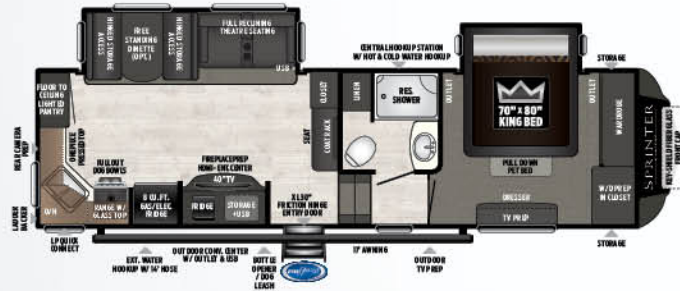
RV REFRIGERATOR RES. REFRIGERATOR



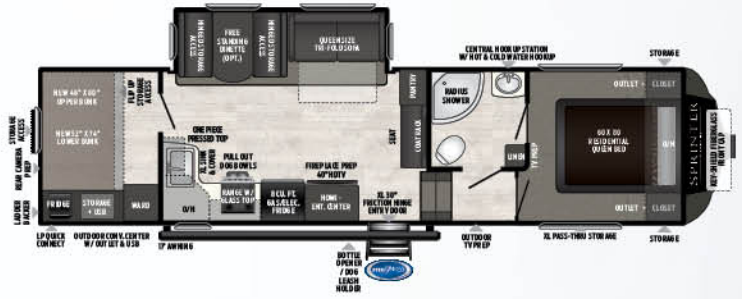
Thermal Package with Astro-Foil

Stay warmer when the weather gets chilly!

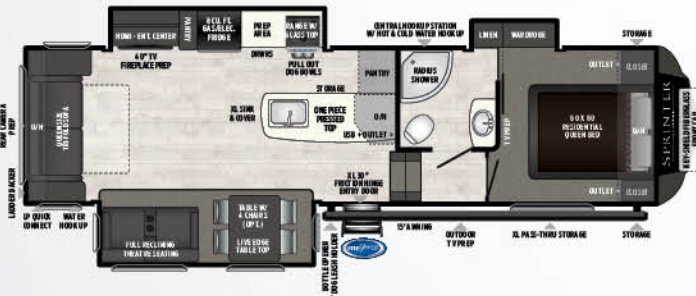
- Independently tested to perform from 0 – 100 degrees
- XL 35k BTU furnace
- Dual layer of insulation, and layer of Astro-Foil in the roof
- Heated & enclosed underbelly w/layer of Astro-Foil insulation
- Heated & enclosed gate valves
- Layer of Astro-Foil insulation behind front cap
- 2" thick sidewalls



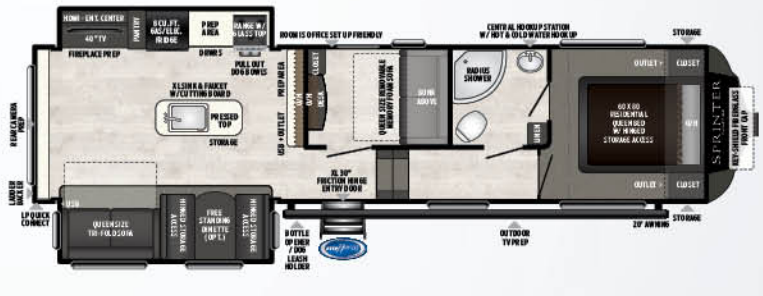
27FWML | MID-LIVING W/ KING BED SLIDE, W/D PREP, FLOOR-TO-CEILING PANTRY & O/S CONV. CENTER
Weight: 9078 LBS. | Length: 31'10"



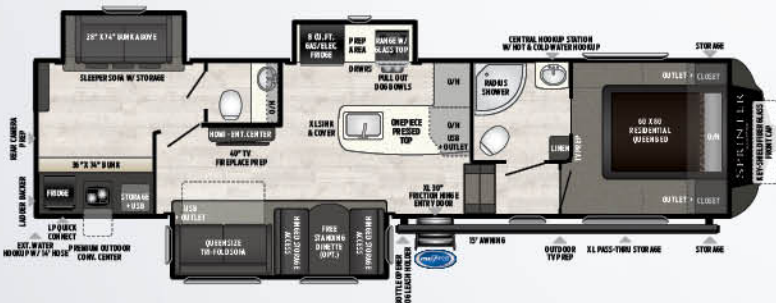
29FWBH | PRIVATE DOUBLE OVER DOUBLE BUNKHOUSE W/ OUTDOOR CONVENIENCE CENTER
Weight: 8824 LBS. | Length: 34'7"



29FWRL | REAR LIVING ROOM W/ GREAT COUNTERTOP SPACE & AMPLE BEDROOM STORAGE
Weight: 9115 LBS. | Length: 33'5"



31FWMB | HYBRID MID-BUNK W/ UTILITY ROOM AND KITCHEN ISLAND
Weight: 9505 LBS. | Length: 35'11"



32FWBH | BATH-AND-A-HALF BUNKHOUSE W/ DEDICATED PRIVACY BUNKROOM W/ HALF BATH
Weight: 9993 LBS. | Length: 36'11"



TBD | NEW FIFTH WHEEL FLOORPLAN COMING IN FEBRUARY 2020, CHECK KEYSTONEV.COM/SPRINTER FOR DETAILS.

EXTERIOR FEATURES	CF FW	LTD TT	LTD FW
Exclusive MaxTurn Technology™ and Hitch Vision™	X		X
Dual battery rack	X	X	X
Electric stabilization jacks	X	X	
One touch auto leveling jacks			X
100" wide stance axles	X	X	X
15K BTU ducted air conditioner	X	X	X
2-tone painted front cap	X	X	X
30" friction hinge entry door	X	X	X
4" extra-long rain spouts	X	X	X
50 Amp service standard w/2nd A/C prep	X	X	X
6' 3" slide room height	X	X	X
Aluminum wheels	X	X	X
Best in class 2" laminated aluminum framed sidewalls	X	X	X
Black tank flush system	X	X	X
Blow molded seamless holding tanks	X	X	X
KeyTV™ cable and satellite hook-up	X	X	X
Battery disconnect		X	X
Electric awning, friction-hinge adjustment, LED light strip, manual override, and speakers	X	X	X
Dexter E-Z Lube® axles	X	X	X
Furion® backup camera prep	X	X	X
Furion® solar prep quick connect		X	X
64™ cable slide system w/ 4-point seal	X	X	X
Industry best, 100" wide-body construction	X	X	X
Interior access, manual override for all slide rooms	X	X	X
Keyed Alike lock system	X	X	X
Lockable slam latch baggage doors	X		X
Outside spray port	X	X	X
WiFi/range extender prepped antenna	X	X	X
Outside TV hook-up with T10 recep, tv bracket and cable prep on exterior wall	X	X	X
Rear bumper storage w/ end caps	X	X	X
Remote control system (awning, slide outs, awning light, jacks)	X	X	X
Road Armor™ suspension/pin box	X	X	X
Splash guard under slide	X	X	X
Tinted safety glass windows	X	X	X
Tough Guard painted skirt metal	X	X	X
Two 30 lb. LP bottles	X	X	X
XI entry door grab handle	X	X	X
Water heater bypass for easy winterization	X	X	X
Motion sensor light in pass-through storage	X	X	X
Heated pass-through storage	X	X	X
LP quick-connect	X	X	X
Rear ladder		X	X
Rear ladder prep (CF FW)	X		
INTERIOR FEATURES	CF FW	LTD TT	LTD FW
12V 55A converter	X	X	X
Residential stainless steel, french-door, T10 fridge w/ 1000 watt independent inverter & battery disconnect			X
30" x 42" shower w/seat (except 3340/41)			X
35K BTU auto-ignition furnace	X	X	X
50A electrical service (floorplan specific)	X	X	X
12 cu. ft. double-door G/E refrigerator standard (3160, 3340, 3530, 3550, 3560, 3570, 3610, 3620)			X

INTERIOR FEATURES (CONT.)	CF FW	LTD TT	LTD FW
8 cu. ft. G/E refrigerator, standard CF FW	X		
80" interior height		X	
96" wide-body interior, best in class!	X	X	X
All hardwood doors and drawer fronts	X	X	X
Congoleum® carefree vinyl flooring (3 year cold crack warranty)	X	X	X
Cable TV hook-up with T10 outlet	X	X	X
Central command center for monitoring all tanks and battery, awning, slide-outs, lights, etc.	X	X	X
Screwed cabinetry with lumber-core stiles	X	X	X
Crown molding on cabinetry	X	X	X
Digital thermostat	X	X	X
Fireplace		X	X
Fireplace prep	X		
Flush floor bathroom/bedroom suites (no bedside step-up)	X		X
In-floor ducted heat	X	X	X
Large picture window at the dinette & sofa	X	X	X
LED ambient lighting	X	X	X
LED overhead lighting in every room	X	X	X
LIVING ROOM FEATURES	CF FW	LTD TT	LTD FW
Sound bar entertainment system with Bluetooth® technology, front-facing quick HDMI hook-up, and USB port	X	X	X
HD LED TV	X	X	X
Dedicated locations below living room TV for DVD/satellite receiver	X	X	X
Under booth dinette storage with easy access hinged cushions	X	X	X
KeyTV® single point control of over-the-air cable, and satellite feeds	X	X	X
Dimmable light switch in main slide	X	X	X
Shaw® high-grade carpeting w/ R2 stain guard	X	X	X
Tri-fold memory foam sleeper sofa w/storage	X	X	X
BATH FEATURES	CF FW	LTD TT	LTD FW
Stainless steel vanity sink	X	X	X
Medicine cabinet with mirror	X	X	X
Radius glass shower (model specific)	X	X	X
Skylight over tub/shower	X	X	X
Reinforced shower support	X	X	X
Power roof vent fan	X	X	X
Porcelain foot flush toilet			X
GFI receptacles in the bathroom	X	X	X
Illuminated light switch	X	X	X
KITCHEN FEATURES	CF FW	LTD TT	LTD FW
Foil wrapped seamless galley and lavatory counter tops	X	X	X
LED ambient lighting under kitchen countertop	X	X	X
Crown molding cabinetry	X	X	X
6-gallon gas/electric DSI auto ignition water heater	X	X	X
Large stainless steel sink	X	X	X
Industry best, 22" deep drawers with full extension ball bearing drawer guides (floor plan specific)	X	X	X
Lighted range hood with exhaust fan	X	X	X
Microwave with carousel	X	X	X
Sink cover/cutting board	X	X	X
Drop-in range w/ piezo ignition and glass stove top cover	X	X	X
Overhead cabinets above sink	X	X	X
Stainless steel appliances	X	X	X
BEDROOM FEATURES	CF FW	LTD TT	LTD FW
60" x 80" queen bed (floor plan specific)	(X)	(X)	
King bed 70" X 80" (LTD TT 330KBS, 333FKS, 341BK and CF FW 27FWML only)	(X)	(X)	X
Shaw® high-grade carpet in master bedroom w/ R2 stain guard	X	X	X

BEDROOM FEATURES (CONT.)	CF FW	LTD TT	LTD FW
Under bed storage	X	X	X
Color matched bedspread	X	X	X
Electrical outlets near bed	X	X	X
Roof vent - N/A w/ 2nd AC	X	X	X
Ample closet storage	X	X	X
TECH FEATURES	CF FW	LTD TT	LTD FW
USB's in every room	X	X	X
Reading light over bed	X	X	X
Exterior TV mount	X	X	X
Motion sensor light in pass-through storage & pantries	X	X	X
Luxury pendant lights in kitchen/living area	X	X	X
PET FEATURES	CF FW	LTD TT	LTD FW
Pet bed on all bed slide models	X	X	X
Pet bowl w/ treat tray in kitchen	X	X	X
Exterior dog leash holder w/ bottle opener	X	X	X
POPULAR OPTIONS	CF FW	LTD TT	LTD FW
Free-standing live edge table with four chairs (floorplan specific)	(X)	(X)	(X)
2nd 13.5 A/C (standard on all LTD FWs)	X	X	X
CAMPING MADE EASY PACKAGE	CF FW	LTD TT	LTD FW
Outside TV hookup with 110 recep, TV bracket and cable prep on exterior wall	X	X	X
MORryde® StepAbove® entry step	X	X	X
Interior access, manual override for the slide rooms	X	X	X
Dual battery tray	X	X	X
Solar prep	X	X	X
LED interior lighting	X	X	X
Dimmer switch in living room slide-out	X	X	X

LUXURY PACKAGE (LTD ONLY)	CF FW	LTD TT	LTD FW
Premium sink cover/cutting board		X	X
Radius glass shower (3340/41 only)		X	(X)
Premium pull-down sprayer faucet		X	X
MaxxAir® power vent fan w/ rain sensor			X
LG® solid surface countertop and stainless steel farmhouse sink with chef's faucet and sprayer		X	X
Gas struts for bed storage		X	X
Exterior ladder for easy roof maintenance		X	X
Upgraded decal package w/ raised front cap lettering		X	X
Upgraded bedspread		X	X
Premium LED recessed overhead lighting		X	X
THERMAL PACKAGE	CF FW	LTD TT	LTD FW
Independently tested to perform at 0 -100 degrees	X	X	X
Astro-foil insulation in underbelly, roof, and front wall	X	X	X
2" thick sidewalls	X	X	X
Dual layer of insulation in roof	X	X	X
Best-in-class 35K BTU furnace	X	X	X
Heated/enclosed underbelly and gate valves	X	X	X

Sprinter

SPECIFICATIONS

MODEL	WEIGHT	CARRYING CAPACITY	HITCH	FRESH WATER	WASTE WATER	GRAY WATER	LPG	LENGTH*	HEIGHT
320MLS	8815	2625	1040	81	34	68	60	36' 7"	11' 3"
330KBS	9100	2400	1135	81	34	102	60	37' 9"	11' 3"
333FKS	9079	2421	1210	81	34	68	60	37' 9"	11' 3"
341BIK	9390	2110	1370	81	34	68	60	38' 10"	11' 3"
3160FWRLS	10585	2315	2300	81	44	78	60	35' 3"	13' 2"
3161FWRLS	10585	2315	2300	81	44	78	60	35' 3"	13' 2"
3340FWFLS	10510	3490	2255	81	34	68	60	37' 10"	13' 2"
3341FWFLS	10619	3381	2300	81	34	68	60	37' 10"	13' 2"
3530FWDEN	10831	3169	2230	81	44	44	60	39' 0"	13' 2"
3531FWDEN	10874	3126	2230	81	44	44	60	39' 0"	13' 2"
3550FWMLS	11038	2962	2205	81	44	78	60	39' 0"	13' 2"
3551FWMLS	10982	3018	2205	81	44	78	60	39' 0"	13' 2"
3560FWRLB	11325	2675	2225	81	78	78	60	39' 6"	13' 2"
3561FWRLB	11325	2675	2225	81	78	78	60	39' 6"	13' 2"
3570FWLFT	11449	2551	2440	81	44	78	60	39' 6"	13' 2"
3571FWLFT	11592	2408	2440	81	44	78	60	39' 6"	13' 2"
3610FWFKS	10740	2610	1380	81	34	102	60	40' 6"	13' 4"
3611FWFKS	10740	2610	1380	81	34	102	60	40' 6"	13' 4"
3620FWLBH	11780	2220	2185	81	44	102	60	40' 6"	13' 4"
3621FWLBH	11780	2220	2185	81	44	102	60	40' 6"	13' 4"
27FWML	9078	2922	1710	81	44	78	60	31' 10"	13' 0"
29FWBH	8824	3036	1570	81	44	88	60	34' 7"	13' 0"
29FWRL	9115	3225	2095	81	44	44	60	33' 5"	13' 0"
31FWMB	9505	2595	1715	81	44	78	60	35' 11"	13' 0"
32FWBH	9993	2107	1735	81	78	44	60	36' 11"	13' 0"

DISCLAIMER: Product information is as accurate as possible as of the date of publication of this brochure. All features, floor plans, and specifications in this brochure are subject to change without notice. Please also consult Keystone's web site at www.keystonerv.com for more current product information and specifications. Tow Vehicle Disclaimer. CAUTION: Owners of Keystone recreational vehicles are solely responsible for the selection and proper use of tow vehicles. All customers should consult with a motor vehicle manufacturer or their dealer concerning the purchase and use of suitable tow vehicles for Keystone products. Keystone disclaims any liability or damages suffered as a result of the selection, operation, use or misuse of a tow vehicle. KEYSTONE'S LIMITED WARRANTY DOES NOT COVER DAMAGE TO THE RECREATIONAL VEHICLE OR THE TOW VEHICLE AS A RESULT OF THE SELECTION, OPERATION, USE OR MISUSE OF THE TOW VEHICLE. *Length is defined as the distance from the centerline of hitch pin/coupler to rear bumper of trailer. Please review owner's manual prior to purchase for more information on service warranties, extended use, towing and maintenance. Owner's manuals can be found at keystonerv.com.

BUILT FOR THE LONG HAUL



PRINT 1.2020

