

TRAVEL TRAILERS | FIFTH WHEELS
keystonerv.com/springdale

SPRINGDALE

EASTERN



**Keystone RV
Company**

The ultimate
ownership experience.

The ultimate ownership experience.

The goal of Keystone RV Company is to surprise and delight our owners at each and every touchpoint. We're happy when our campers are happy, and we are committed to providing the very best ownership experience in the industry.



**Keystone RV
Company**

1 EASIER SHOPPING.

At Keystone, we make choosing an RV as easy as finding the Big Dipper on a dark summer night. With comprehensive online product information, Key Connect™ product advisors, and an unparalleled dealer network, we will help you select the perfect RV for your family's adventure.

2 INNOVATIVE THINKING.

The road's a nicer place when you have the industry's smartest features behind you. Keystone leads the pack in patented innovations that make our RVs safer, more comfortable, and easier to operate.

3 LONG HAUL QUALITY.

To keep you on the road, there are certain things we just won't build a Keystone RV without. Game-changing features like our Unified Wiring Standard, Tru-Fit™ five-point slide construction, and no-fail Tuf-Lok™ A/C duct joiners combined with exhaustive testing and inspections are some of the reasons why Keystone is able to offer our owners the industry's best 3-year limited structural warranty.

4 WORRY-FREE CUSTOMER SERVICE.

Wherever the road takes you, you're never too far from an authorized Keystone service center. We also offer live service assistance, ultra-fast parts shipping, online maintenance tips and tricks, and a single-point warranty claims policy. *That's* peace of mind.

5 KEYSTONE NATION.

When you choose Keystone, you become a part of one of the largest camping families in the country. We're Keystone Nation. A friendly community where people share photos, travel tips and amazing stories – all in the spirit of camaraderie and adventure. Come join us.

Experience the Springdale lifestyle by visiting [#keystonespringdale](#)



SPRINGDALE

KEYSTONE RV'S #1 SELLING TRAVEL TRAILER IN NORTH AMERICA



SINGLE-AXLES | TRAVEL TRAILERS | TOY HAULERS | FIFTH WHEELS

Get up and going with Springdale.

Springdale has introduced more families to the camping lifestyle than any other Keystone brand. Why? Because Springdale offers more standard features, options and amenities than you will find in other conventionally built RV brands. Combined with Keystone's quality construction and customer service, Springdale will make you wonder what you were waiting for.

Springdale's new 2020 models feature a fresh new logo, modern interior design touches, and the introduction of the single axle toy hauler to our full lineup of travel trailers, fifth wheels and minis.

Keystone EXCLUSIVE Innovations

Year after year, Keystone RV's experienced team delivers Built For the Long Haul quality you expect and exclusive innovations you won't find anywhere else.



IT'S ELECTRIC!

All units now standard with electric stabilizers or leveling*.
[*EXCLUDING SINGLE-AXLE MODELS & 260BH, 275BH, 38BH, 38FL, 38FQ MODELS]



4G LTE and Wi-Fi Prep

All units are equipped with a new antenna that integrates 4G LTE and Wi-Fi with standard VHF/UHF/AM/FM reception.



3-year Limited Structural Warranty, 1-year Limited Base Warranty

Every new Keystone RV comes with the industry's best three-year limited structural warranty AND a one-year limited base warranty.



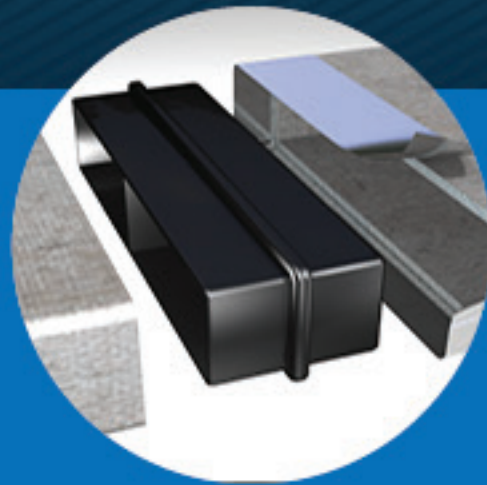
Color-Coded Wiring

Easy-to-trace circuits simplify electrical and entertainment system troubleshooting.



In-Floor Heating Ducts

Ducting allows for more airflow that distributes heat evenly for optimal comfort.



Tuf-Lok™ A/C Duct Joiners

Crush resistant design securely joins A/C ductwork, drastically reducing chilled-air leaks and boosting cooling efficiency and comfort.



Tru-fit™ slide construction

A more durable slide room design that minimizes functional motor and structural stress, resists leaking.

Key Features

Loaded with amenities that make camping easier, safer and more comfortable.



DSI Quality Circle Award Winner
For the past two years, Springdale received the highest dealer satisfaction scores for quality, service, and parts.



Arched Ceilings
Increases interior height to 82" for an expansive, open feel.



Solid, Real Hardwood Cabinetry
Others in this segment use wrapped doors. Solid, real wood cabinets will last longer in moist climates and is more durable.



Arctic Package
Extend the camping season with forced heat through the center of the coach into the underbelly to keep your tanks and waterlines warm.



Pressed Countertops
Marbled pressed countertops that are exceptionally durable and moisture resistant.



Power Tongue Jack
Easy-to-use jack makes RV setup fast and simple.



Electric Awning with LED Lighting
Easily operate your awning with the push of a button.



Jensen® Entertainment System
Designed specifically for RVs, Jensen DVD, CD and MP3 players are included with your new Springdale.



Decorative Backsplash
Gorgeous, easy-to-clean tile-look backsplash.



Furrion® Oven with Glass Cooktop
Chef-inspired appliances that give you the perfect blend of performance, precision and style.



Keystone RV's #1-selling travel trailer in North America



more product detail at
www.keystonerv.com/springdale



Settle for Stunning

The Springdale design team looked to current trends to completely update travel trailer interior design. The result is nothing short of stunning. Across the lineup, you will see expansive 82" arched ceilings, beautifully detailed designer kitchen backsplashes, sleek Furrion® appliances, gorgeous fireplaces, bright washed-oak flooring, light marbled countertops and an abundance of natural light.

Springdale offers two décor options: Dusk and Ozark (right)



Do-More Dinette

Springdale's new freestanding table provides owners with endless options. Lower the adjustable legs to create an additional sleeping space, or to use as a coffee table in the living room. Take the table outside for al fresco dining or for extra serving space. (Included with Next Level package, see pg. 8.)



Family-Sized Living

Plenty of room for the entire family. Bunks feature ultra-soft Teddy Bear™ mattresses.



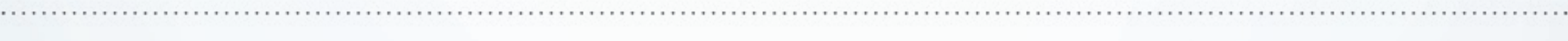


Next Level Package

Available on all models, except for single axle floorplans

Use the Next Level Package to add premium features and value to your Springdale RV
See page 15 for more details

- 7 CU. FT. REFER
- DO-MORE DINETTE TABLE
- TRI-FOLD SOFA
- DECORATIVE DINETTE LIGHT
- ALUMINUM WHEELS
- TV

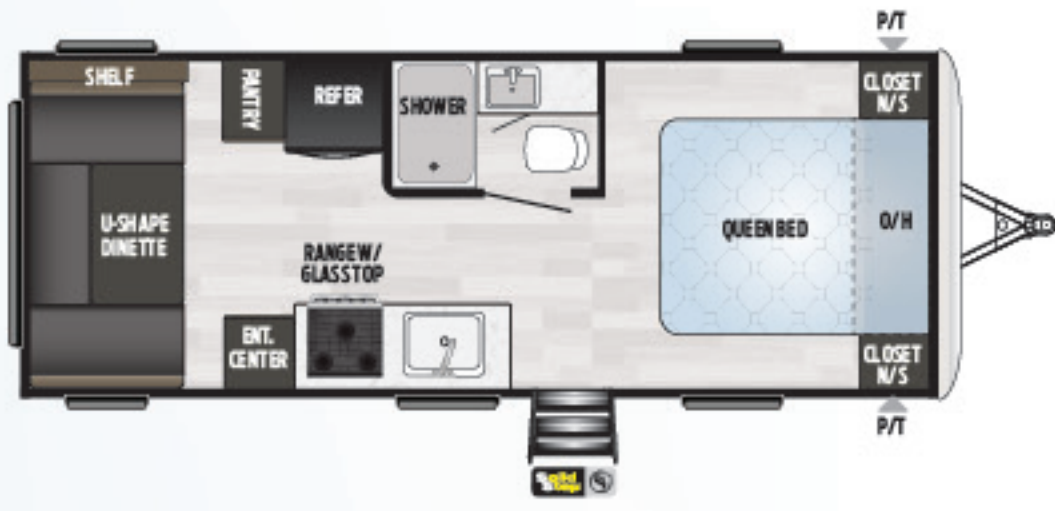


Rugged Terrain Package

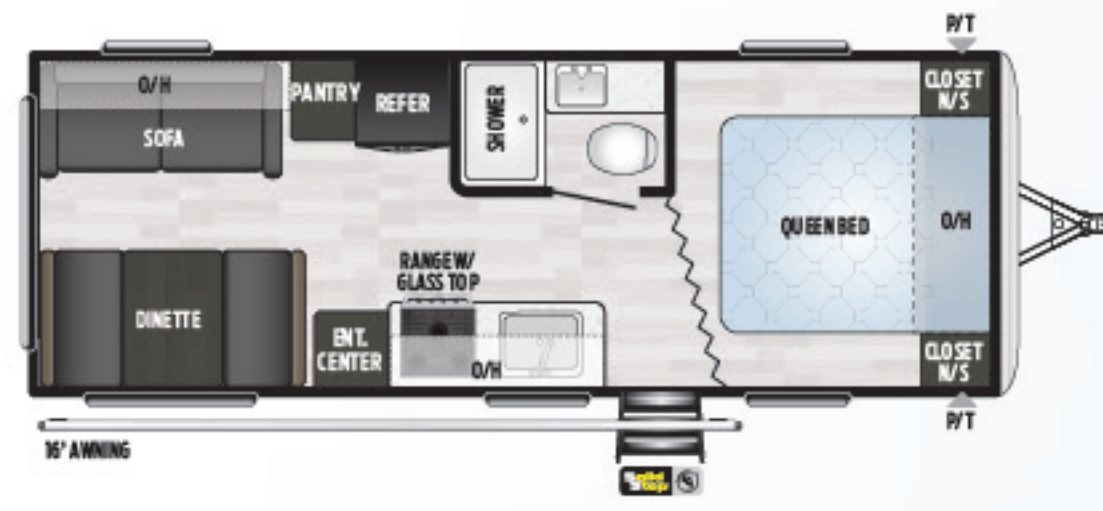
Rugged Terrain package available on these floorplans:
1750RD, 1760BH, 1790FQ, 1800BH

Everything about the new Springdale™ Rugged Terrain™ package shouts off-road adventure. Over-slung axles, all-terrain tires, and micro diamond plate skirting deliver increased ground clearance, traction, and durability. Zamp® solar prep and a 30 lb. propane tank lets campers go deep into uncharted territory and stay there.

- 30 LB. BOTTLES
- ZAMP SOLAR PREP
- BLACK SPOKE WHEELS
- BAJA DECOR
- MICRO DIAMOND PLATE
- SOLID STEP®
- TV
- OVER SLUNG AXLES
- FRICTION HINGE DOOR
- LED MARKER LIGHTS



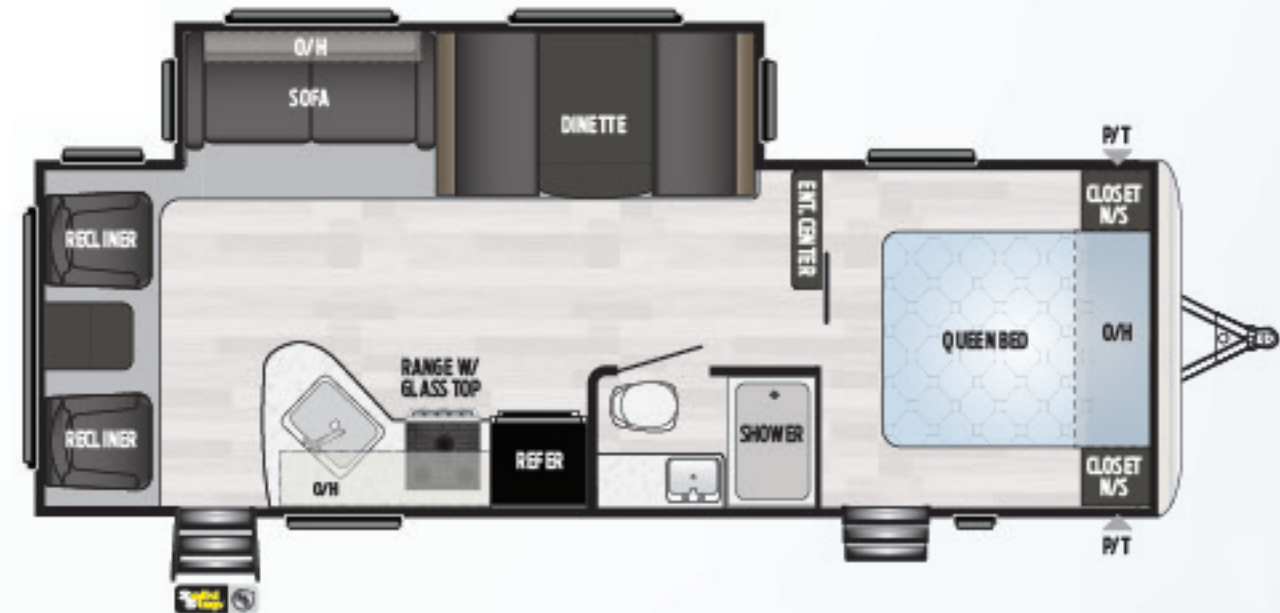
202RD | LARGE REAR BATHROOM, LIGHTWEIGHT, LARGE OUTSIDE KITCHEN
Weight: 4614 LBS. | Length: 24' 10"



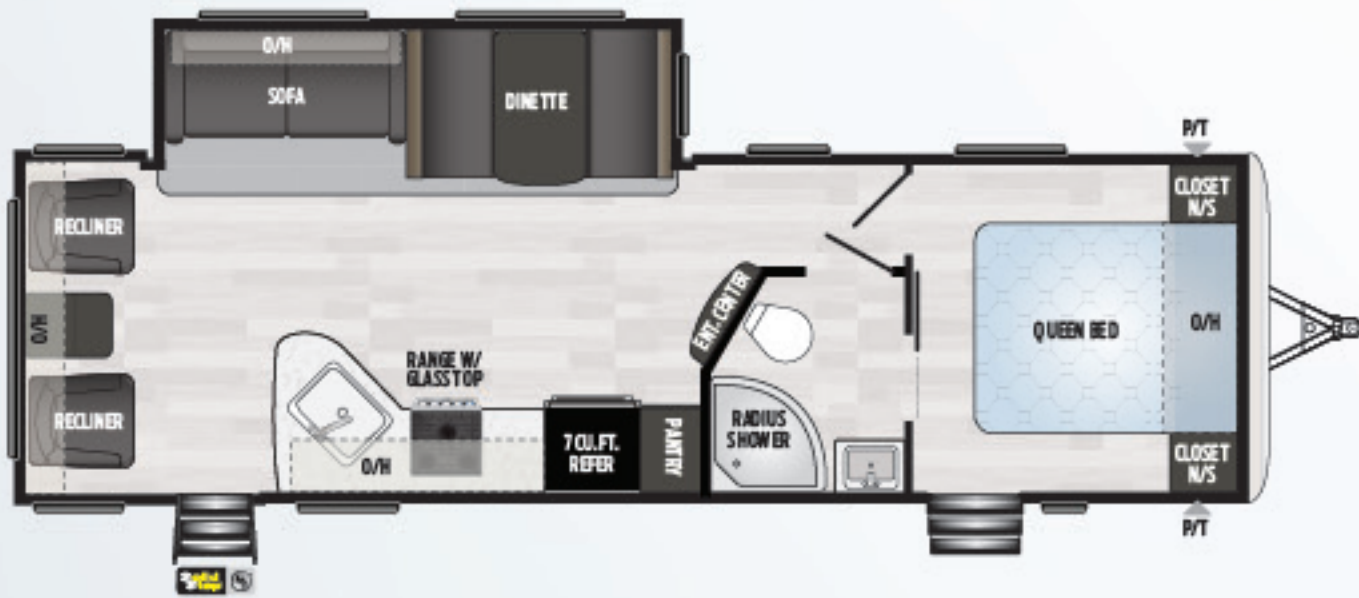
NEW! **220RD** | WALK-AROUND QUEEN, LUXURY REAR DINETTE WITH PICTURE WINDOW
Weight: 4800 LBS. | Length: 26' 0"



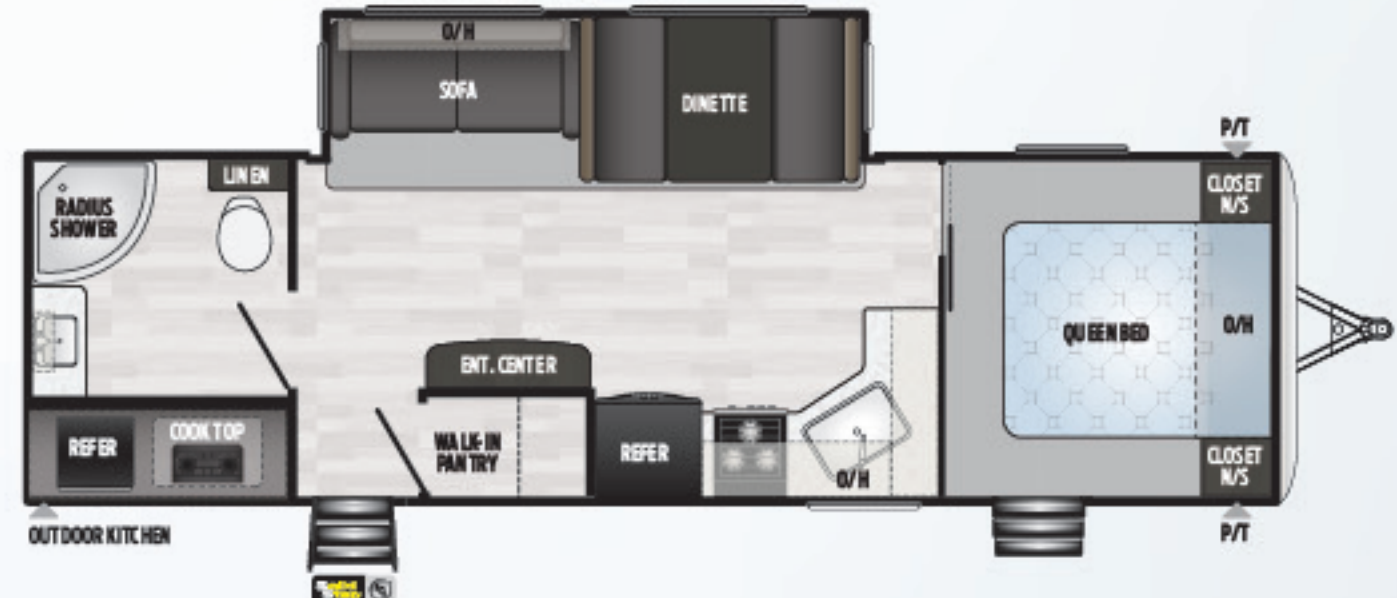
260BH | #1 SELLING BUNKHOUSE, PRIVATE MASTER BEDROOM
Weight: 5219 LBS. | Length: 28' 10"



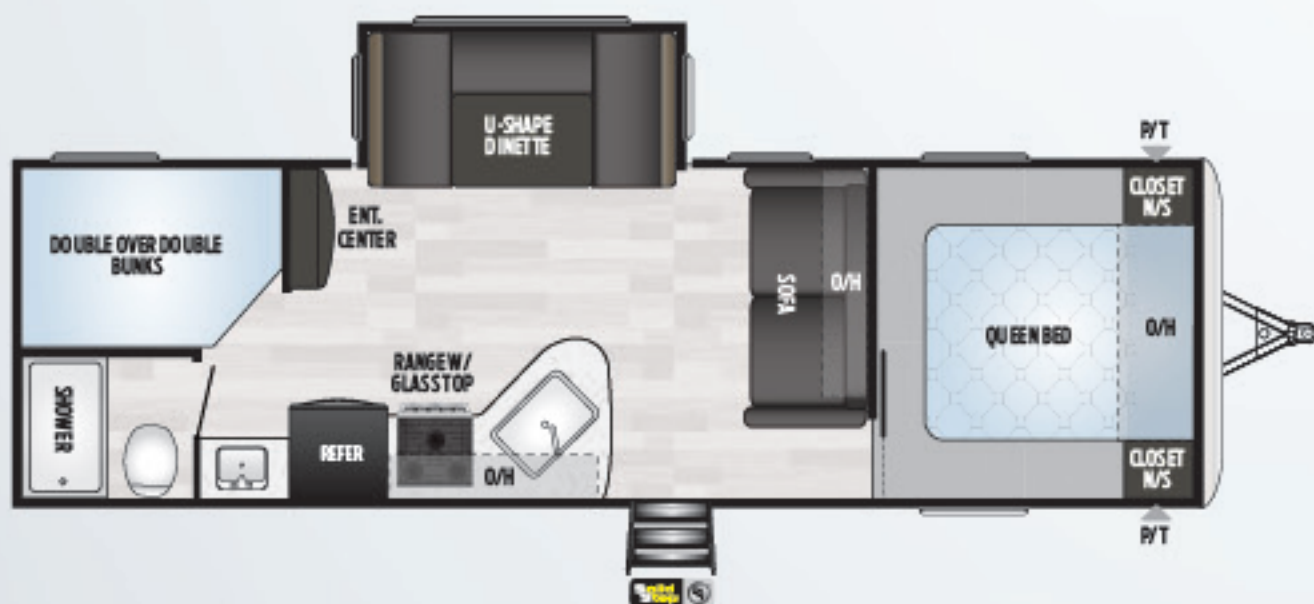
266RL | REAR LOUNGE, BUILT FOR ENTERTAINING
Weight: 6286 LBS. | Length: 28' 11"



271RL | REAR LIVING ROOM, LARGE KITCHEN PACKED WITH STORAGE
Weight: 6936 LBS. | Length: 31' 10"



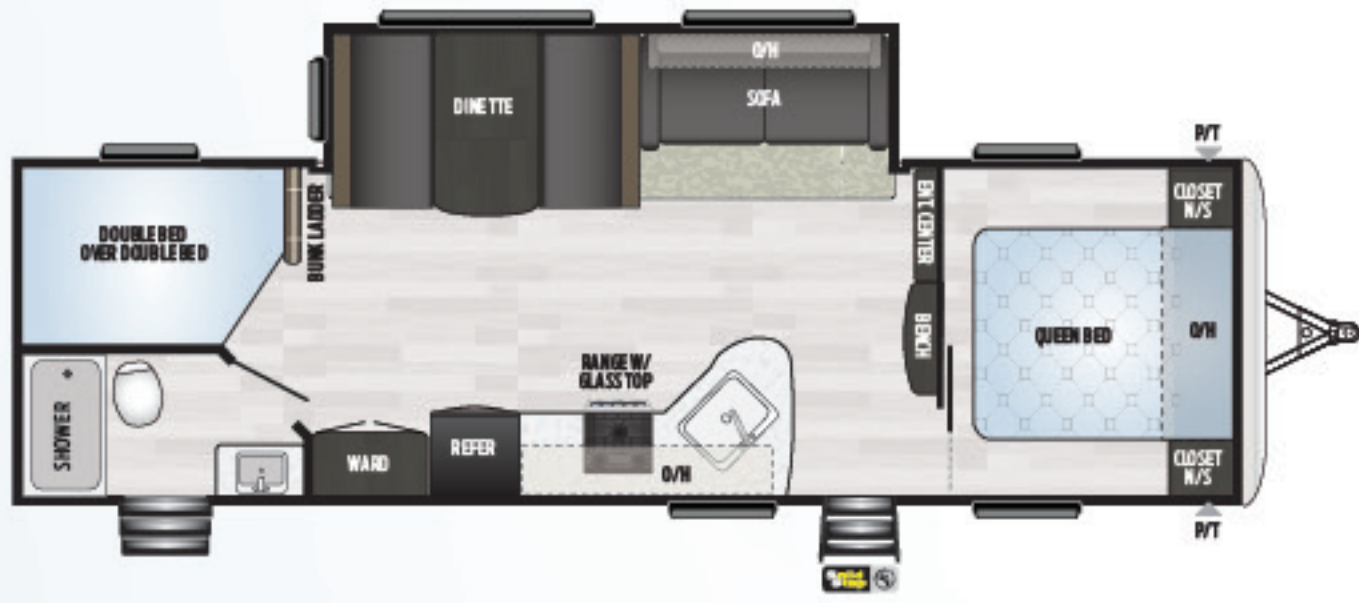
274RB | REAR BATH FOCUS, LARGE WALK-IN PANTRY & OUTSIDE KITCHEN
Weight: 7146 LBS. | Length: 31' 7"



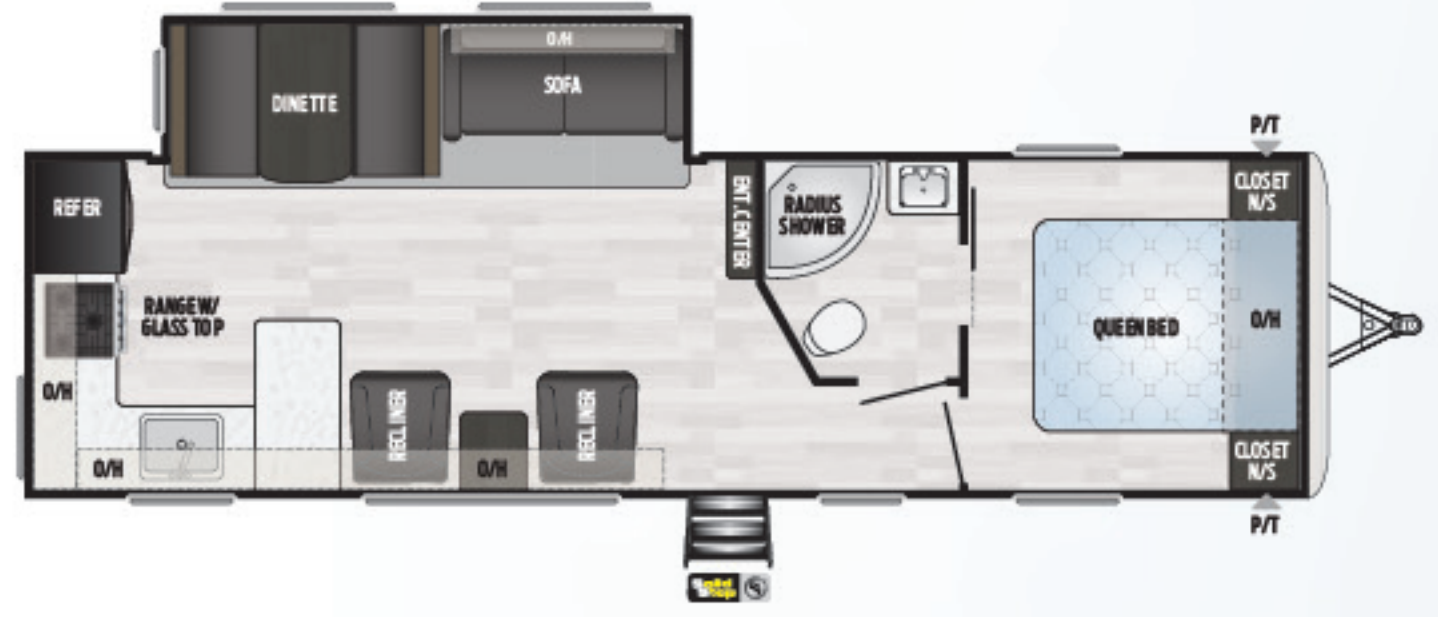
NEW! **275BH** | BUNKHOUSE MAXIMIZING SLEEPING SPACE, ENTERTAINMENT FOCUS
Weight: 6250 LBS. | Length: 31' 2"



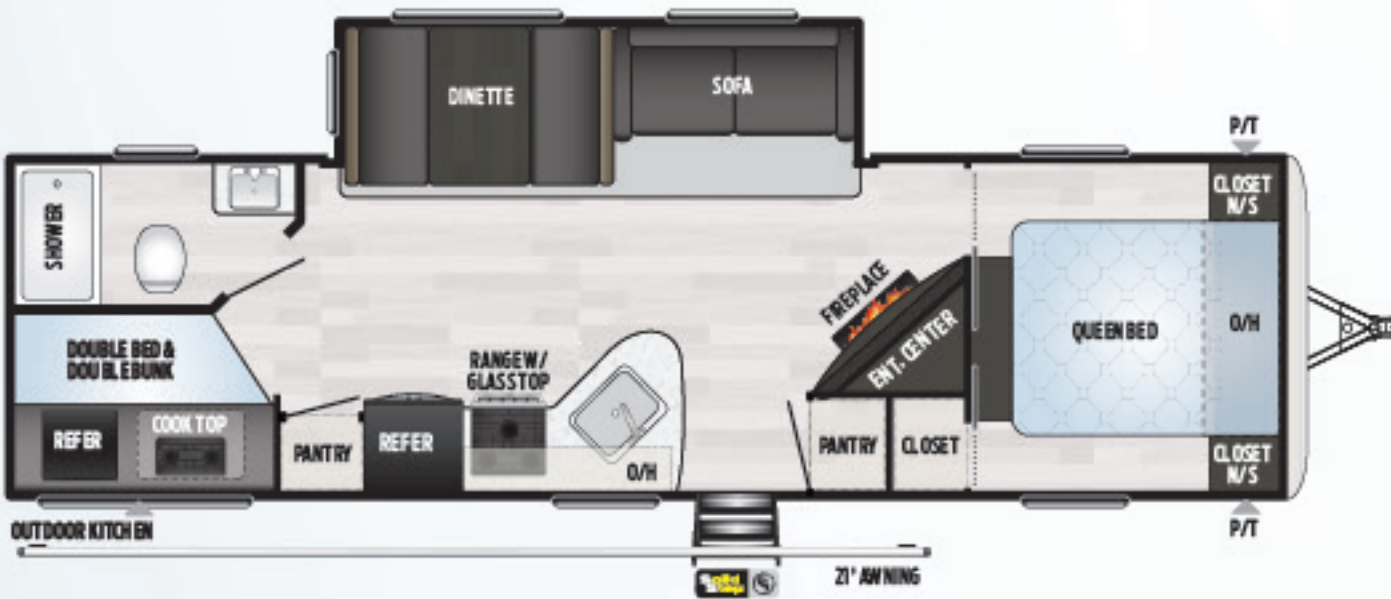
280BH | BUNKHOUSE, ENTERTAINMENT-FOCUSED, WALK-IN PANTRY & OUTSIDE KITCHEN
Weight: 7167 LBS. | Length: 32' 11"



282BH | BUNKHOUSE, OUTSIDE ENTRANCE TO BATH,
PRIVATE MASTER BEDROOM
Weight: 6783 LBS. | Length: 32' 1"



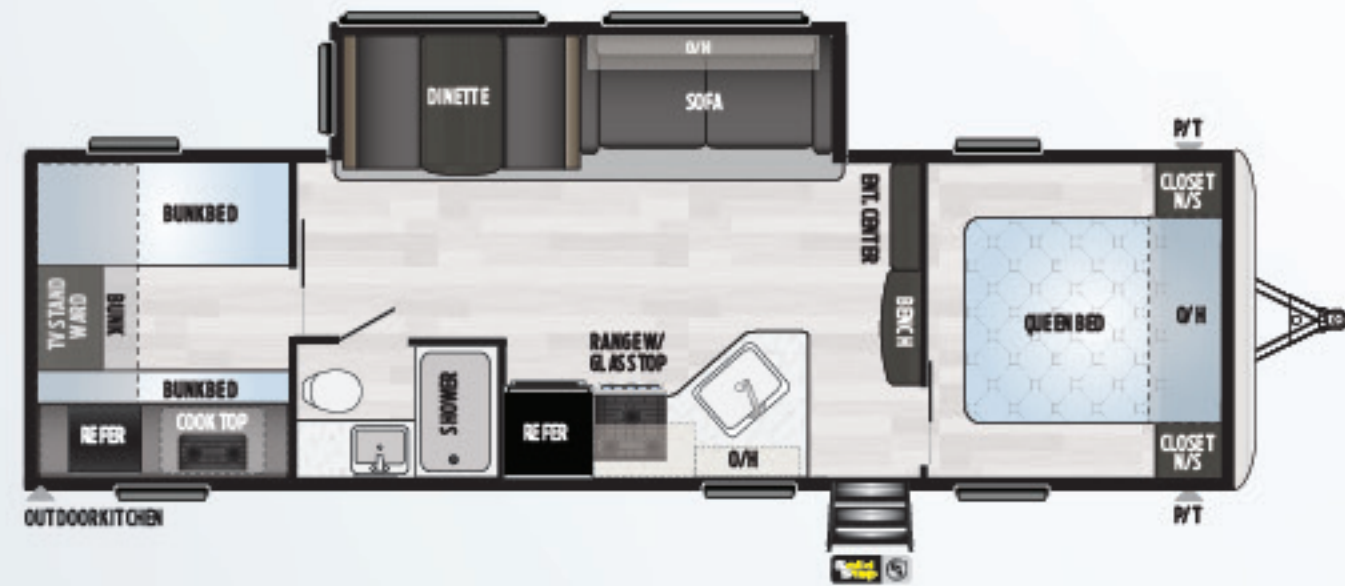
293RK | REAR KITCHEN, HUGE COUNTERTOP,
AMAZING LOUNGE AREA
Weight: 6961 LBS. | Length: 33' 4"



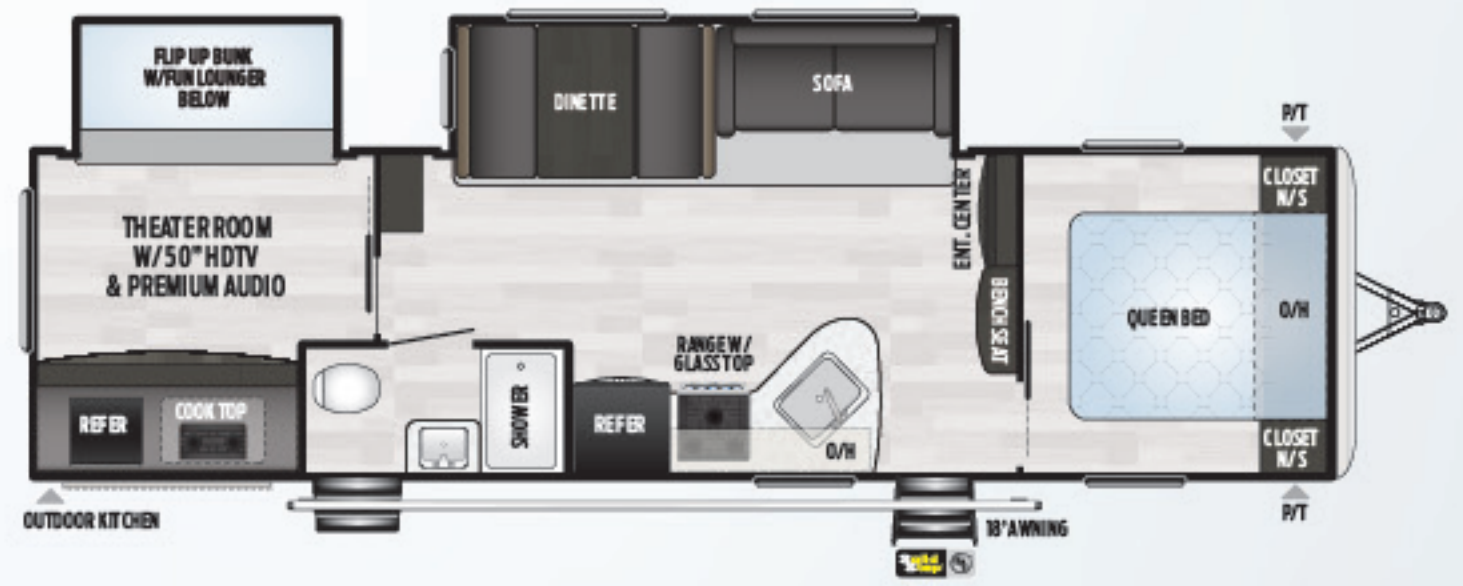
NEW! **295BH** | DOUBLE OVER DOUBLE WITH ULTIMATE CLOSET
& OUTDOOR KITCHEN
Weight: 7035 LBS. | Length: 33' 6"



296BH | REAR GARAGE STORAGE, PRIVATE BUNKHOUSE
DOUBLE-OVER-DOUBLE
Weight: 6929 LBS. | Length: 33' 2"



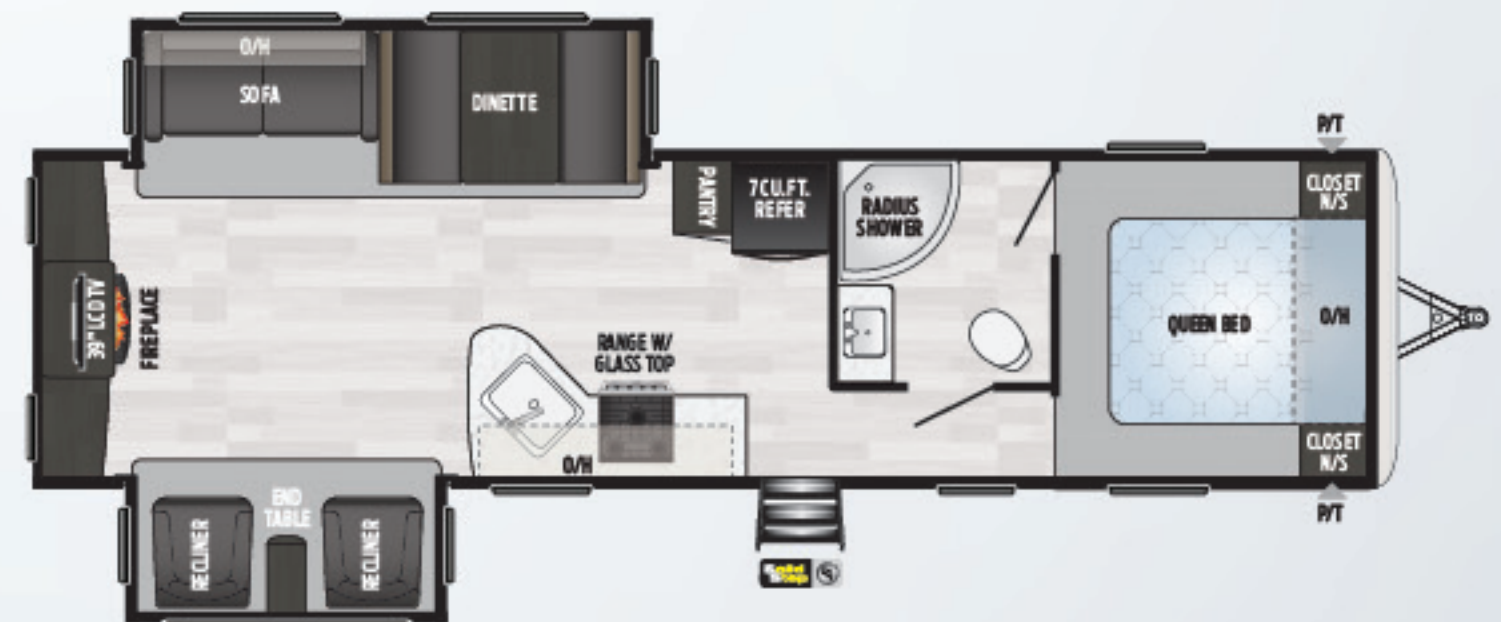
298BH | PRIVATE BUNKROOM, PRIVATE MASTER BEDROOM
& OUTSIDE KITCHEN
Weight: 6901 LBS. | Length: 32' 8"



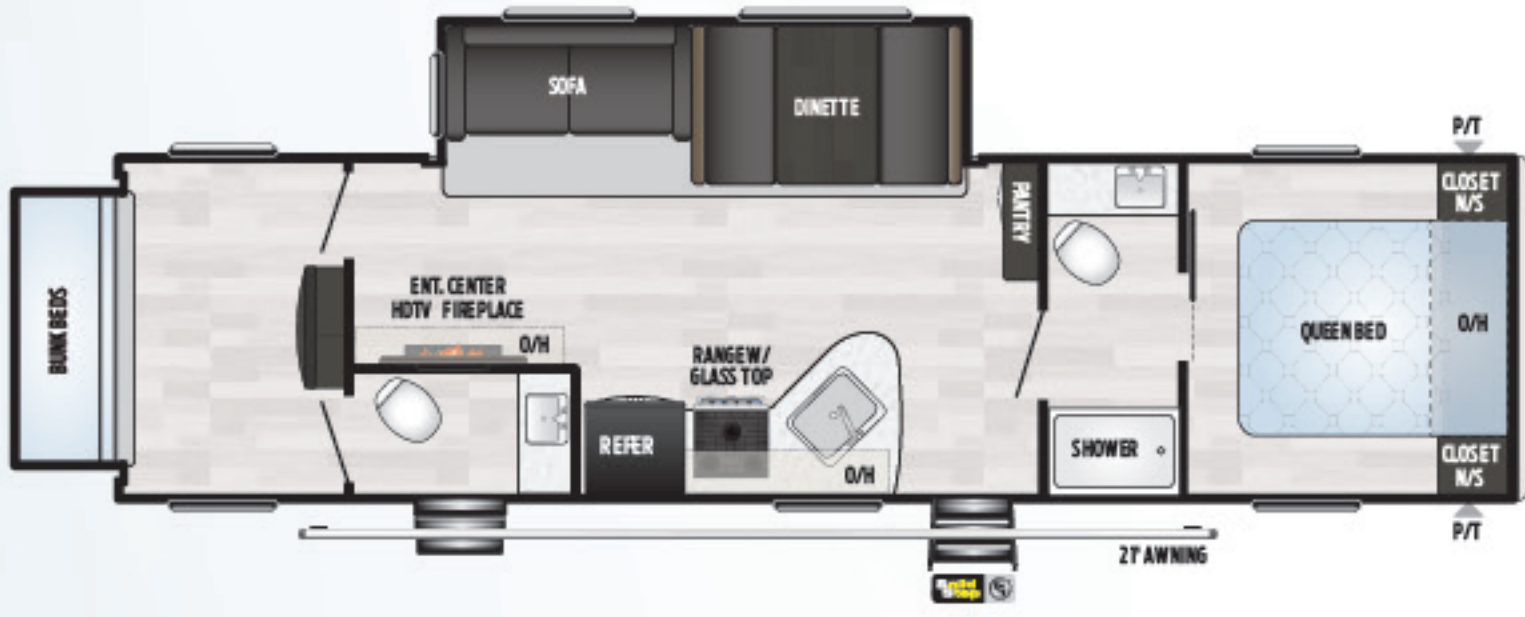
NEW! **301TR** | PRIVATE THEATER ROOM W/ JENSEN ELECTRONICS
Weight: 7915 LBS. | Length: 35' 0"



303BH | PRIVATE BUNKROOM, FEATURING GAMING CHAIRS, DUAL-ENTRY,
PRIVATE MASTER
Weight: 7940 LBS. | Length: 35' 0"



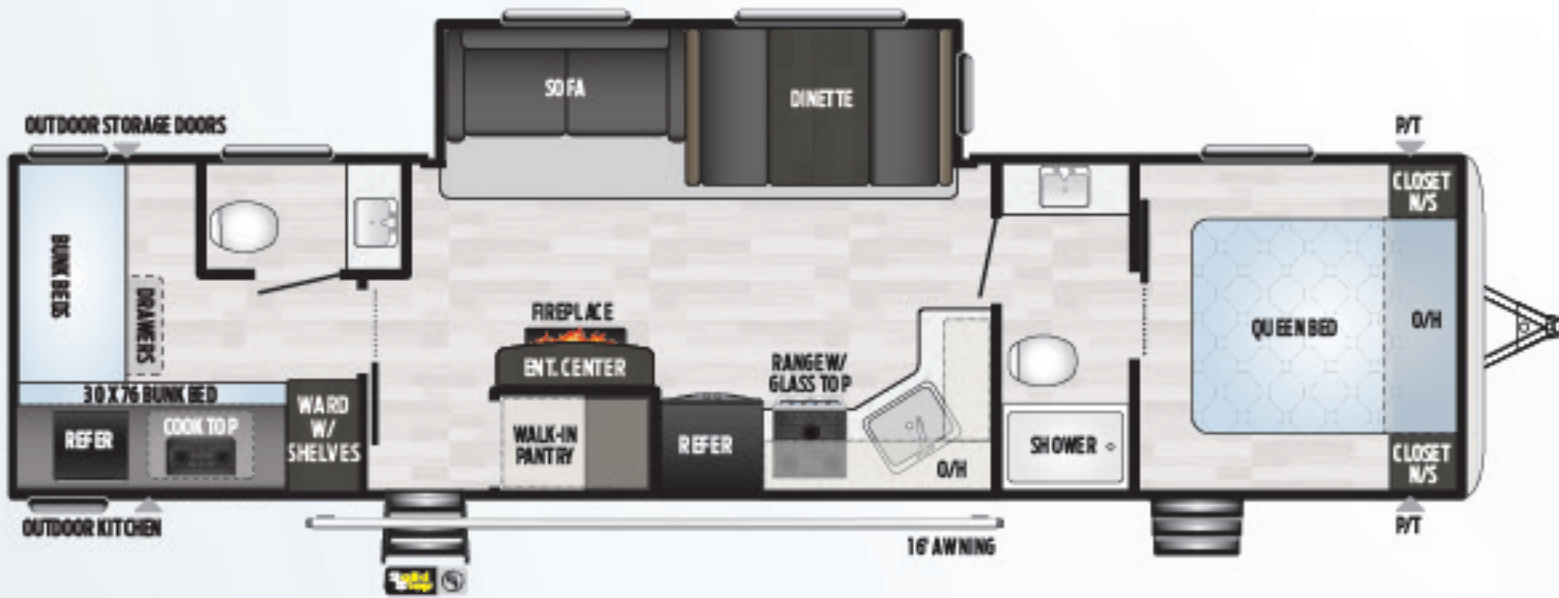
311RE | ENTERTAINMENT-FOCUSED, 2 SLIDES, BRICK FIREPLACE,
MASTER SUITE
Weight: 8358 LBS. | Length: 35' 7"



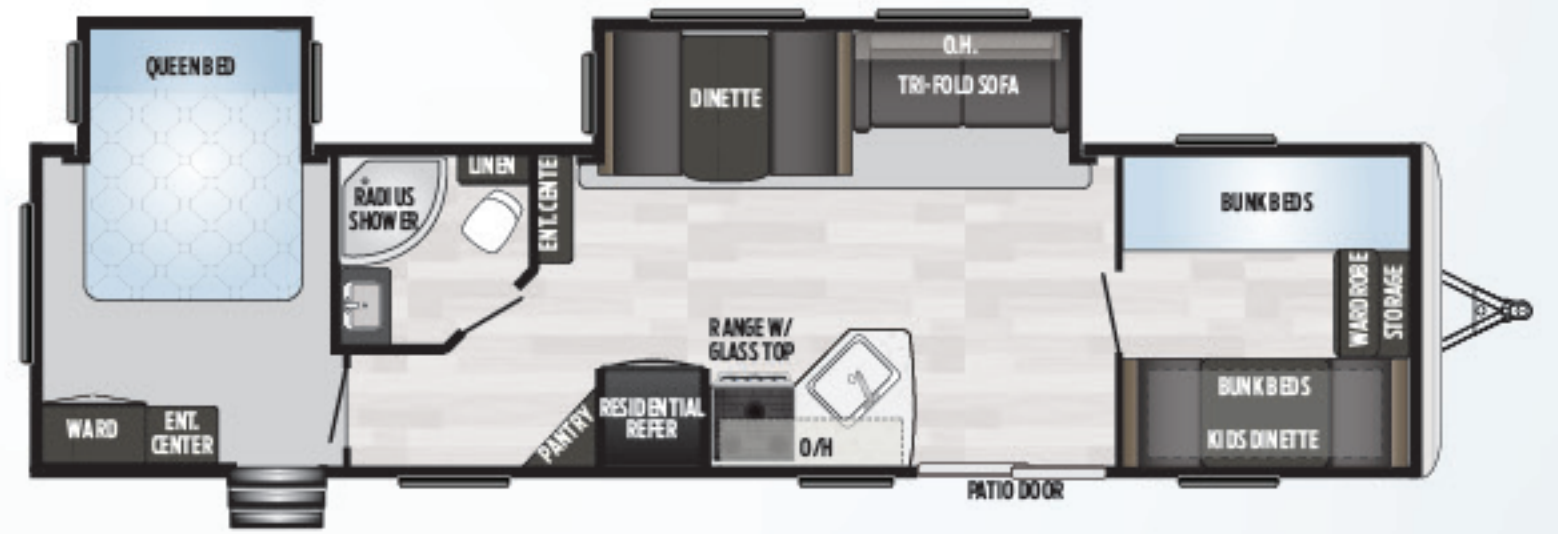
NEW! **312RS** | BATH AND A HALF, BUNKHOUSE W/ REAR SLIDE
Weight: 7945 LBS. | Length: 35' 6"



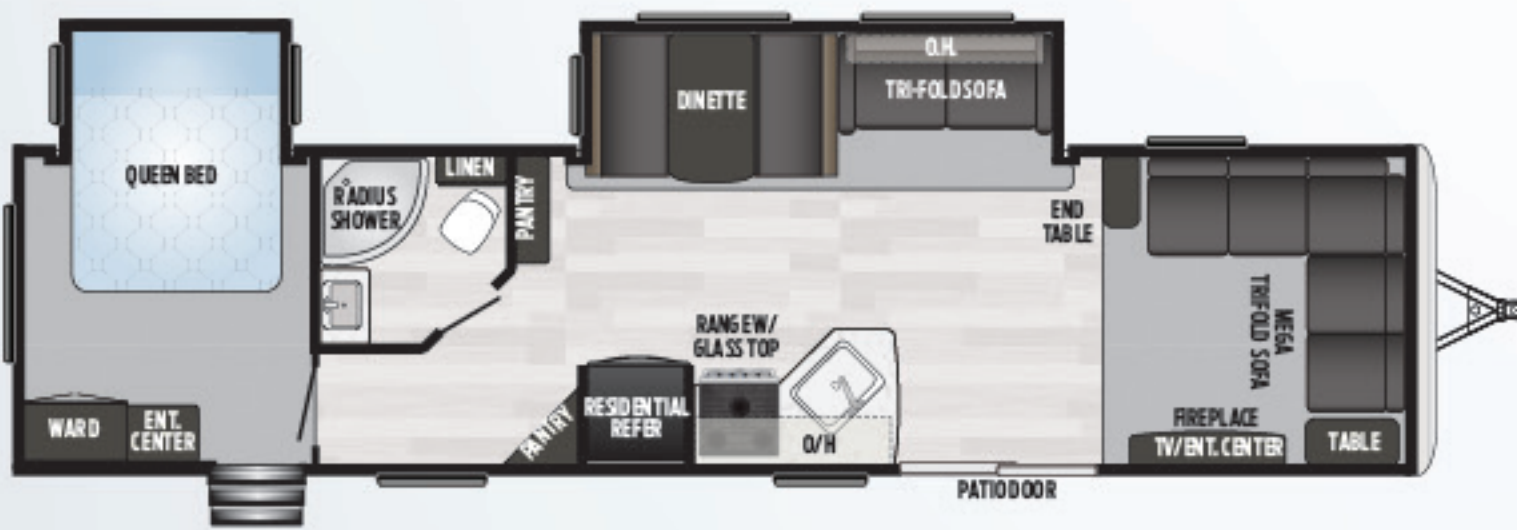
333RE | REAR ENTERTAINMENT, 3 SLIDES, EXTREME KITCHEN
Weight: 9126 LBS. | Length: 37' 3"



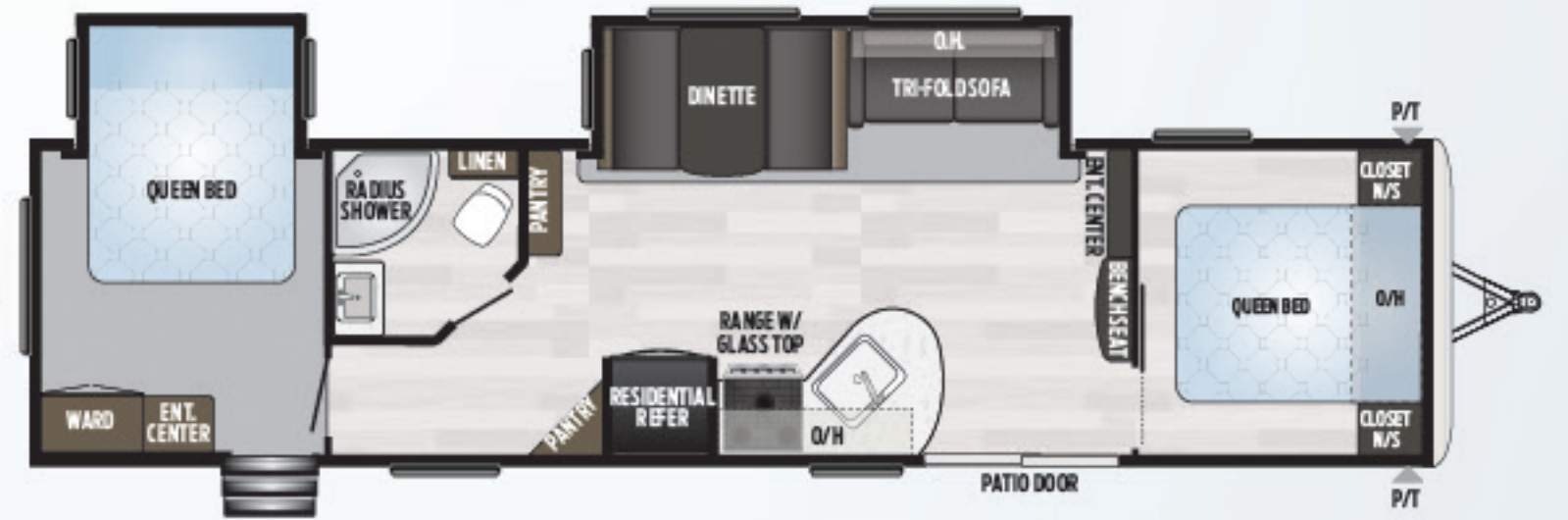
NEW! **335BH** | BATH AND A HALF, 2 BEDROOMS, ULTIMATE BUNKHOUSE WITH FIREPLACE
Weight: 8095 LBS. | Length: 37' 9"



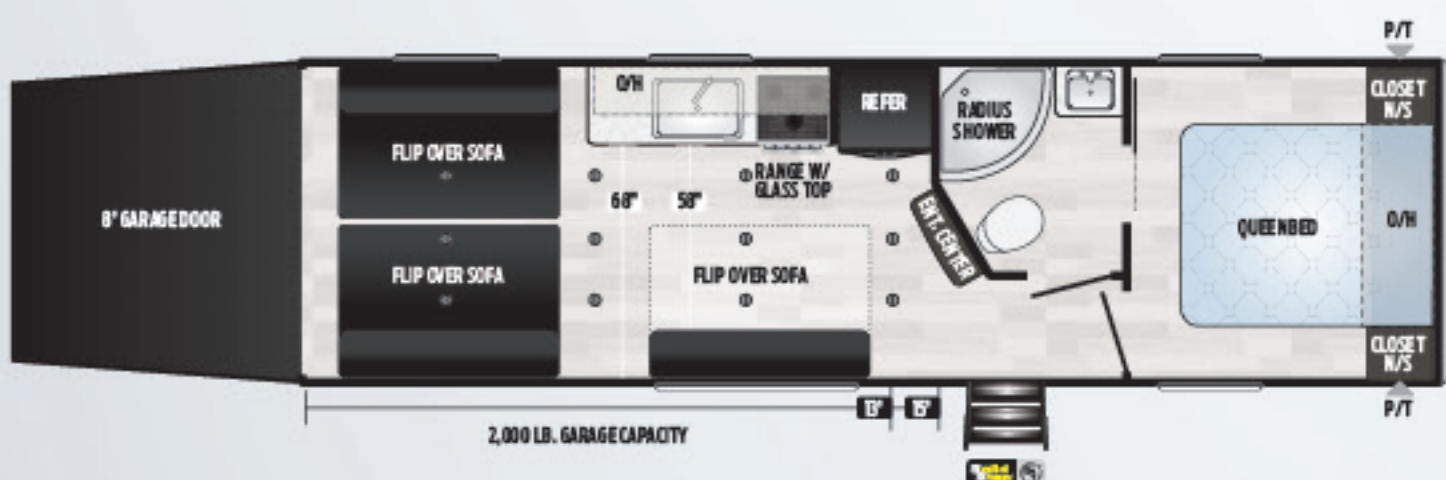
38BH | BUILT FOR COMFORT, SLEEPS UP TO 10, GLASS PATIO DOOR, PRIVATE BEDROOMS
Weight: 8748 LBS. | Length: 38' 11"



38FL | AMAZING FRONT LOUNGE, FIREPLACE, ENTERTAINMENT-FOCUSED
Weight: 8641 LBS. | Length: 38' 11"



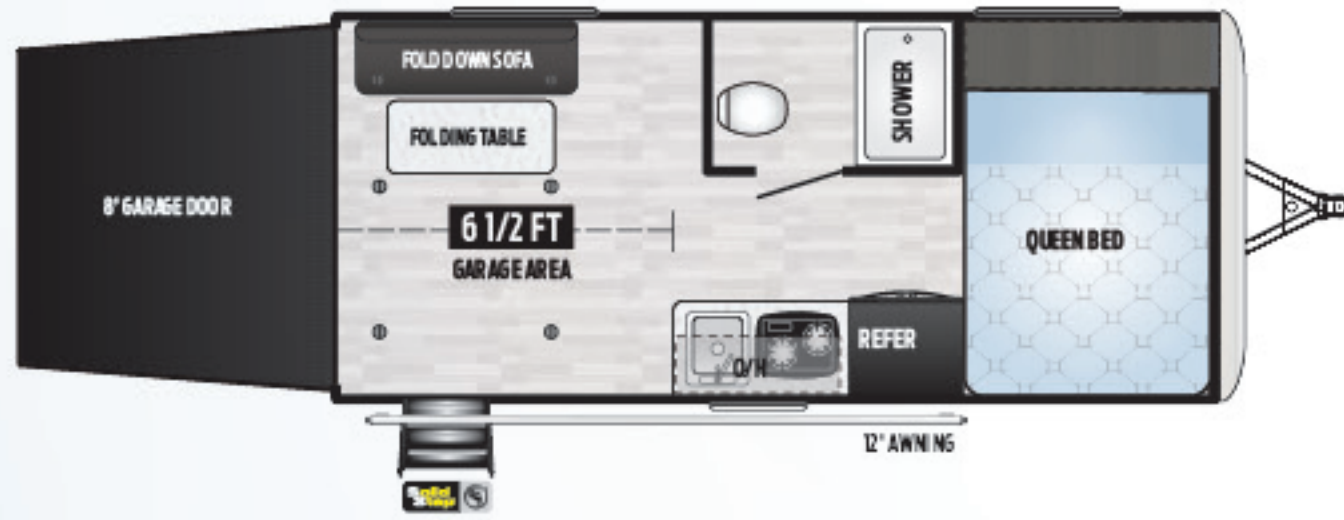
38FQ | FRONT QUEEN, TWO-SLIDE W/ DELUXE KITCHEN & SPRINGDALE MUD ROOM
Weight: 8701 LBS. | Length: 38' 11"



27TH | TOY HAULER, FEATURING A 13' GARAGE, MASTER SUITE
Weight: 6055 LBS. | Length: 31' 4"



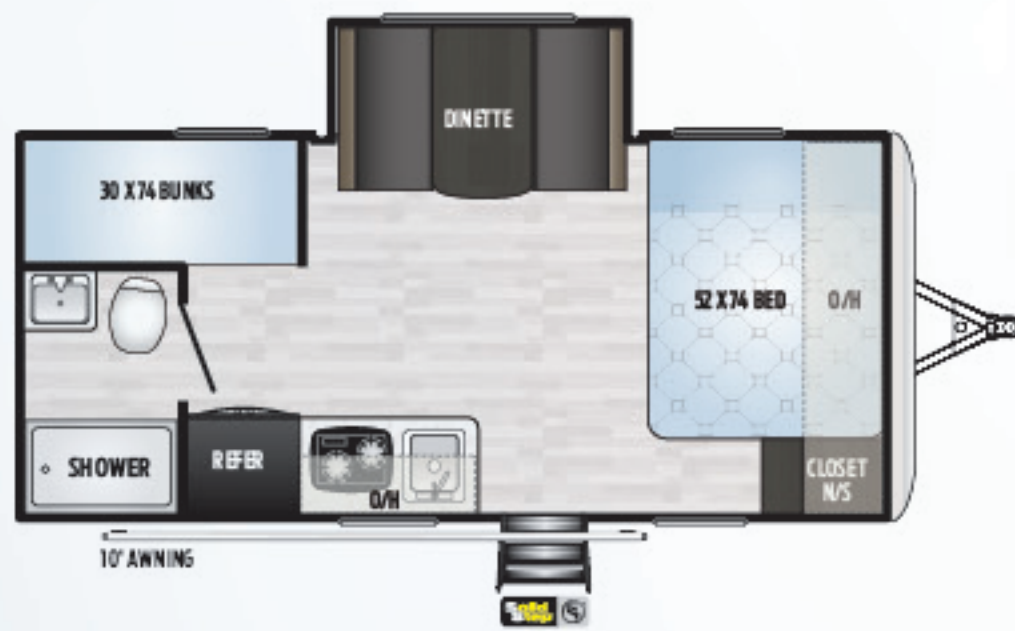
32TH | TOY HAULER, ENCLOSED 12' GARAGE, DINETTE SLIDE ROOM
Weight: 7468 LBS. | Length: 36' 4"



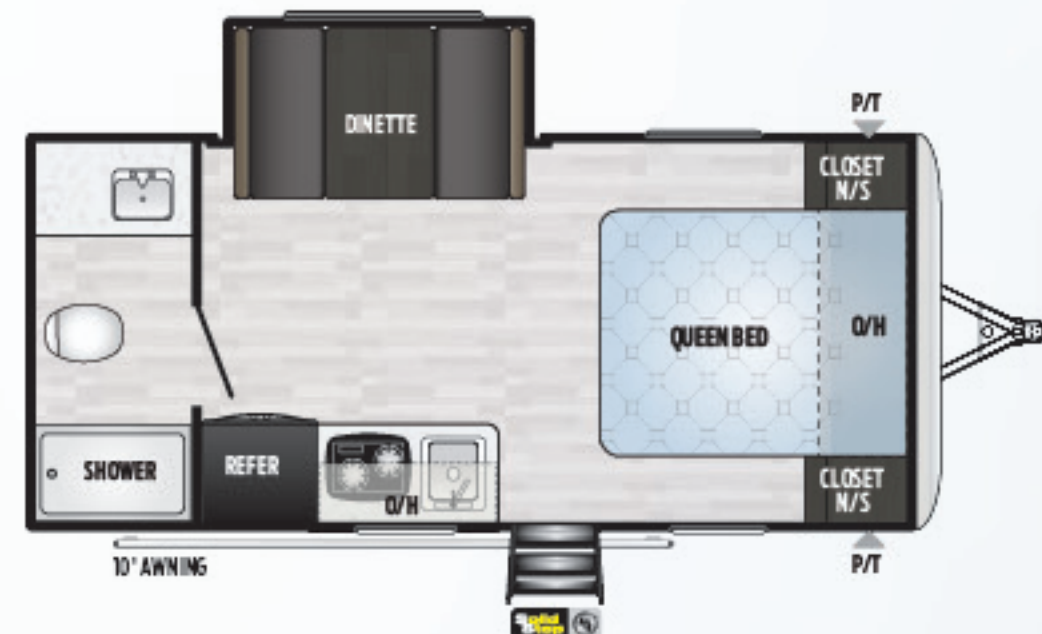
NEW! 1720TH | SINGLE AXLE W/ GARAGE, QUEEN BED
Weight: 3875 LBS. | Length: 21' 4"



1750RD | REAR DINETTE, INCREDIBLE COUNTERTOP SPACE
Weight: 3414 LBS. | Length: 21' 5"



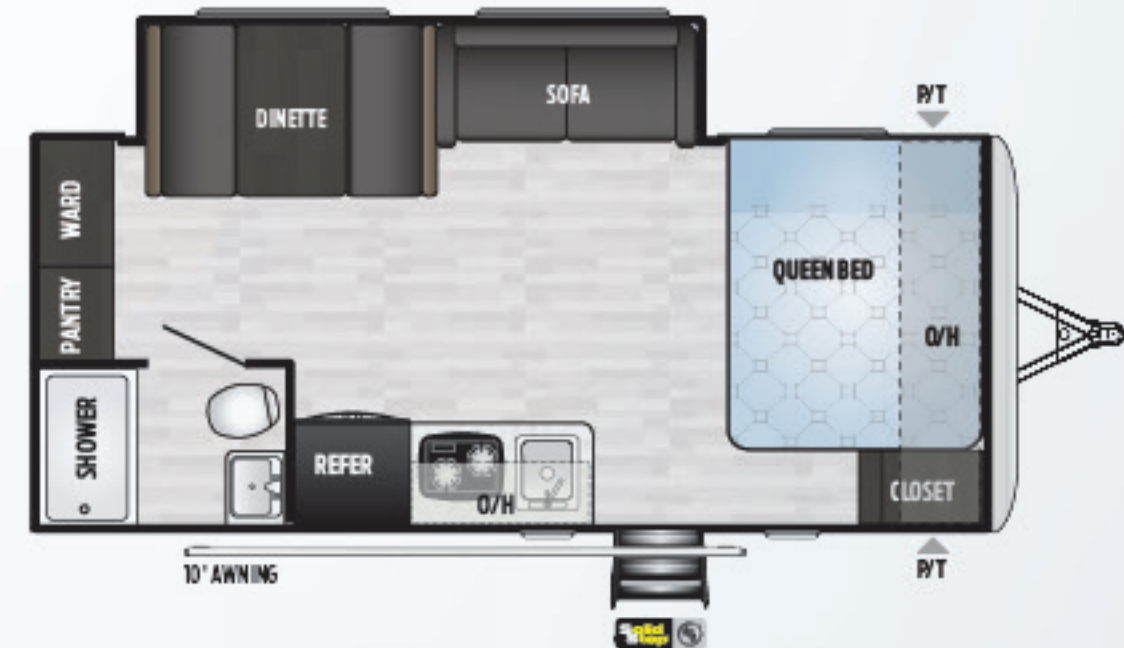
1760BH | DINETTE SLIDE ROOM, 13.5 A/C,
6 CU. FT. FRIDGE
Weight: 3789 LBS. | Length: 21' 5"



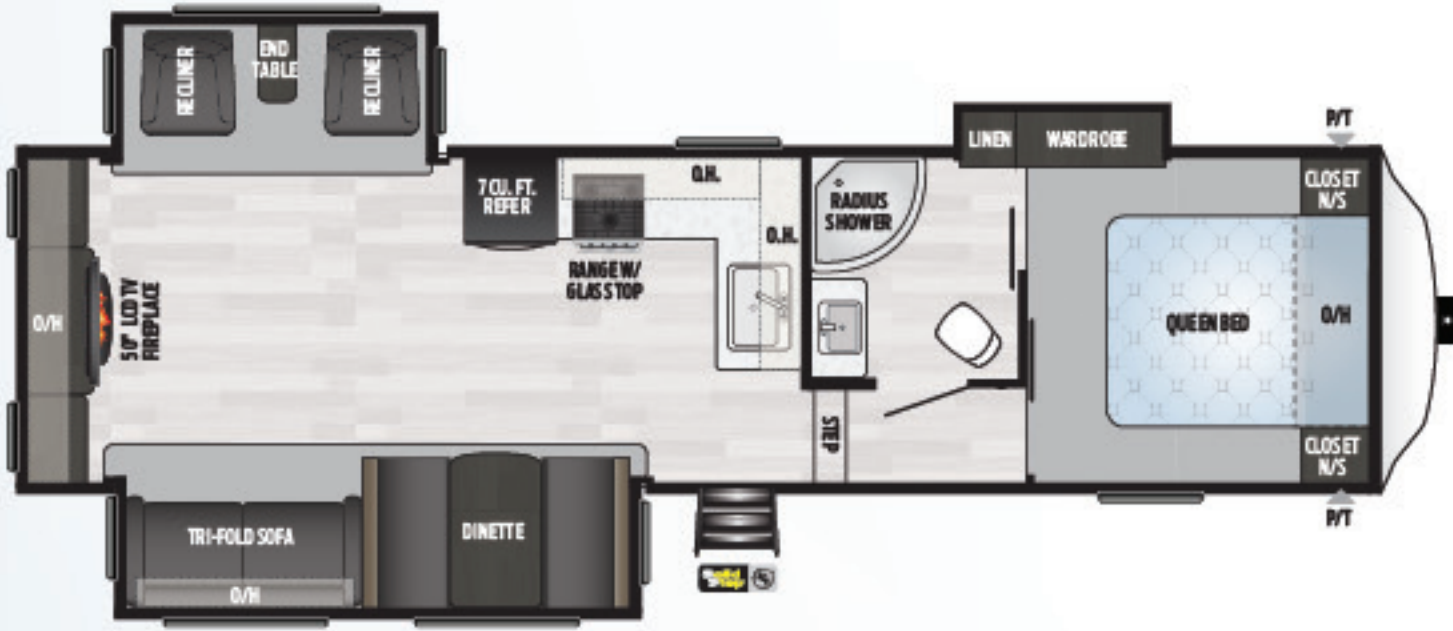
1790FQ | COUPLES COUCH, DINETTE SLIDE ROOM,
LARGE BATHROOM
Weight: 3729 LBS. | Length: 21' 5"



1800BH | #1 SELLING FLOORPLAN, BUNKHOUSE,
OUTSIDE SPEAKERS
Weight: 3394 LBS. | Length: 21' 5"



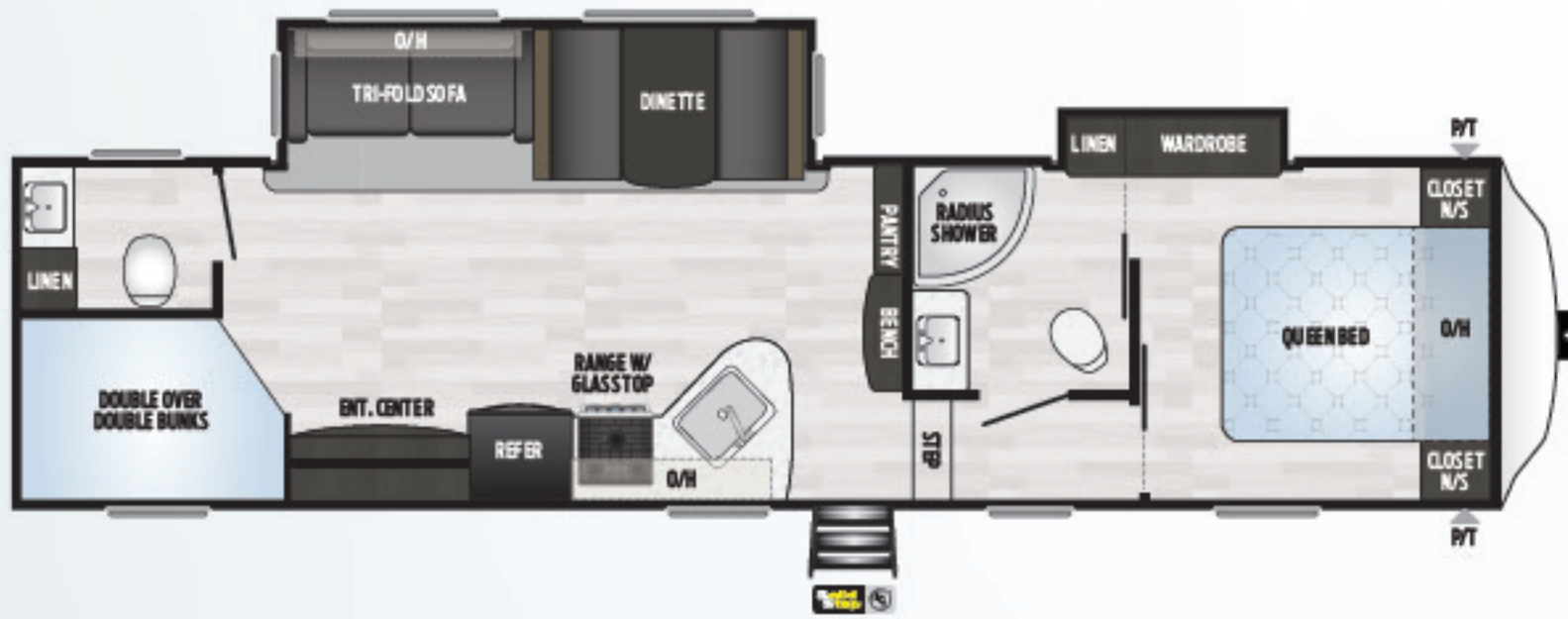
NEW! 1860SS | LARGE SLIDE ROOM W/ PANTRY/WARDROBE,
6 CU. FT. FRIDGE
Weight: 4185 LBS. | Length: 22' 10"



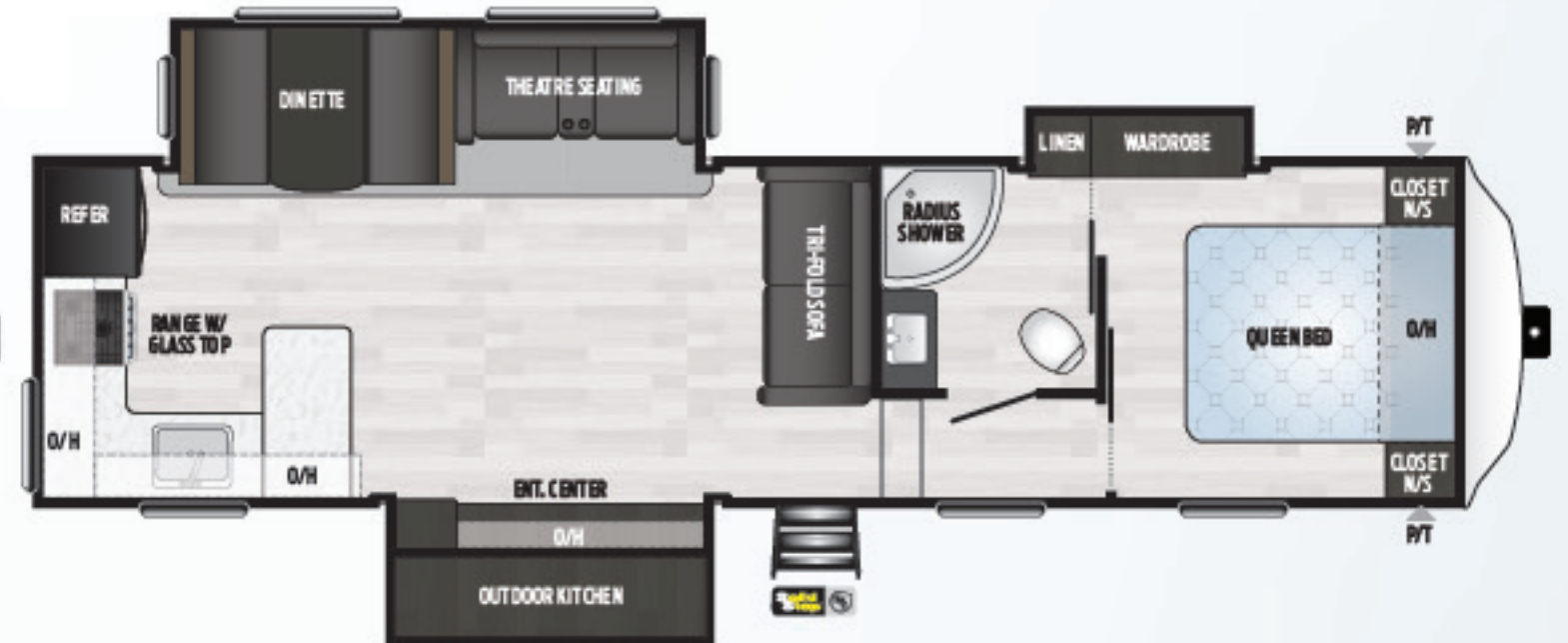
253FWRE | 3 SLIDES, REAR ENTERTAINMENT, FIREPLACE, RECLINERS
Weight: 8615 LBS. | Length: 32' 10"



272FWRE | 2 SLIDES, REAR ENTERTAINMENT, OUTSIDE KITCHEN
Weight: 7846 LBS. | Length: 30' 2"



300FWBH | BUNKHOUSE, BATH AND A HALF, WARDROBE SLIDE, OUTSIDE KITCHEN
Weight: 8748 LBS. | Length: 34' 10"



302FWRK | REAR KITCHEN, TRI-FOLD SOFA AND THEATRE SEATING, OUTSIDE KITCHEN
Weight: 8951 LBS. | Length: 33' 9"

TRAVEL TRAILER SPECIFICATIONS

MODEL	WEIGHT	CARRYING CAPACITY	HITCH WEIGHT	FRESH WATER	WASTE WATER	GRAY WATER	LPG	LENGTH*	HEIGHT
202RD	4614	1886	565	52	30	30	40	24' 10"	10' 11"
220RD	4800	2780	580	52	30	30	40	26' 0"	10' 11"
260BH	5219	2291	510	52	39	30	40	28' 10"	10' 6"
266RL	6286	1359	645	52	39	39	40	28' 11"	10' 11"
271RL	6936	2764	935	52	39	30	40	31' 10"	11' 3"
274RB	7146	2374	720	52	39	69	40	31' 7"	11' 3"
275BH	6250	1610	860	52	30	69	40	31' 2"	10' 6"
280BH	7167	2433	805	52	39	60	40	32' 11"	11' 3"
282BH	6783	1817	690	52	39	69	40	32' 1"	11' 3"
293RK	6961	1839	830	52	30	69	40	33' 4"	10' 11"
295BH	7035	2715	955	52	39	69	40	33' 6"	10' 11"
296BH	6929	2791	920	52	30	39	40	33' 2"	10' 11"
298BH	6901	2579	685	52	30	39	40	32' 8"	10' 11"
301TR	7915	1745	865	52	39	39	40	35' 0"	11' 4"
303BH	7940	1830	970	52	39	39	40	35' 0"	11' 4"
311RE	8358	1402	960	52	30	78	40	35' 7"	10' 11"
312RS	7945	1855	1005	52	69	60	40	35' 6"	10' 11"
333RE	9126	2224	1155	52	39	39	40	37' 3"	10' 11"
335BH	8095	3105	1100	52	69	117	40	37' 9"	10' 11"
27TH	6055	3635	895	52	30	39	40	31' 4"	11' 3"
32TH	7468	2432	1200	52	39	69	40	36' 4"	11' 3"
38BH	8748	2407	995	56	39	69	60	38' 11"	11' 4"
38FL	8641	2464	945	56	39	69	60	38' 11"	11' 4"
38FQ	8701	2434	975	56	39	69	60	38' 11"	11' 4"

FIFTH WHEEL SPECIFICATIONS

MODEL	WEIGHT	CARRYING CAPACITY	HITCH WEIGHT	FRESH WATER	WASTE WATER	GRAY WATER	LPG	LENGTH*	HEIGHT
253FWRE	8615	1685	1500	52	39	39	60	32' 10"	12' 4"
272FWRE	7846	2454	1625	52	39	78	60	30' 2"	12' 0"
300FWBH	8748	1602	1555	52	69	108	60	34' 10"	12' 2"
302FWRK	8951	1369	1520	52	39	78	60	33' 9"	12' 2"

SINGLE AXLE TRAVEL TRAILER SPECIFICATIONS

MODEL	WEIGHT	CARRYING CAPACITY	HITCH WEIGHT	FRESH WATER	WASTE WATER	GRAY WATER	LPG	LENGTH*	HEIGHT
1720TH	3875	825	530	27	30	39	20/30 opt	21' 4"	10' 2"
1750RD	3414	986	520	27	30	30	20/30 opt	21' 5"	10' 2"
1760BH	3789	711	520	27	30	30	20/30 opt	21' 5"	10' 2"
1790FQ	3729	751	480	27	32	30	20/30 opt	21' 5"	10' 2"
1800BH	3394	1006	485	27	30	30	20/30 opt	21' 5"	10' 2"
1860SS	4185	815	615	27	30	30	20	22' 10"	10' 4"

DISCLAIMER: Product information is as accurate as possible as of the date of publication of this brochure. All features, floor plans, and specifications in this brochure are subject to change without notice. Please also consult Keystone's web site at www.keystonerv.com for more current product information and specifications. **Tow Vehicle Disclaimer. CAUTION:** Owners of Keystone recreational vehicles are solely responsible for the selection and proper use of tow vehicles. All customers should consult with a motor vehicle manufacturer or their dealer concerning the purchase and use of suitable tow vehicles for Keystone products. Keystone disclaims any liability or damages suffered as a result of the selection, operation, use or misuse of a tow vehicle. **KEYSTONE'S LIMITED WARRANTY DOES NOT COVER DAMAGE TO THE RECREATIONAL VEHICLE OR THE TOW VEHICLE AS A RESULT OF THE SELECTION, OPERATION, USE OR MISUSE OF THE TOW VEHICLE.** *Length is defined as the distance from the centerline of hitch pin/coupler to rear bumper of trailer. Please review owner's manual prior to purchase for more information on service warranties, extended use, towing and maintenance. Owner's manuals can be found at keystonerv.com.

	TT	FW	TH	SINGLE
INTERIOR STANDARD FEATURES				
Range hood w/ light and exhaust fan	•	•	•	
Furrion oven w/glass top and LED lights	•	•	•	
LED lighting	•	•	•	•
6 cu. ft. gas/electric refrigerator	•			
7 cu. ft. gas/electric refrigerator		•	•	
DVD/CD/MP3/Bluetooth stereo	•	•	•	
CD/Bluetooth radio				•
Sleek Black Furrion Microwave	•	•	•	•
Decorative residential light fixture in slide		•		
Hidden laundry chute (most models)	•		•	
Single-basin undermount sink	•	•	•	•
Cable TV hookup w/booster	•	•	•	•
Solid hardwood cabinetry	•	•	•	•
Reversible bedspread	•	•	•	•
Teddy Bear bunk mattresses (select models)	•	•		•
Bathroom exhaust fan	•	•	•	
Decorative hi-def backsplash	•	•	•	
Quick recovery 6-gallon gas/electric DSI water heater	•	•	•	
Quick recovery 6-gallon gas DSI water heater				•
Quick recovery 10-gallon gas/ electric DSI water heater (38's)	•			
8000 BTU Air Conditioner (select models)				•
13,500 BTU ducted air conditioner w/ thermostat	•	•	•	
15,000 BTU ducted air conditioner w/ thermostat (large slide models)	•			
20,000 BTU furnace				•
30,000 BTU furnace	•	•	•	
12V 55 AMP converter	•	•	•	•
Operable windows in slide-out	•	•	•	
Fireplace (select models)	•	•		
EXTERIOR STANDARD FEATURES				
Laminated sidewalls w/ aluminum framework		•		
Mega pass-through storage compartment	•	•	•	•
Dexter E-Z Lube axles	•	•	•	•
E-Coated corrosion-resistant wheels	•	•	•	•
2 interior and 2 all-weather exterior speakers	•	•	•	•
Quick-release gas line (select models)	•	•	•	

	TT	FW	TH	SINGLE
Seamless, one piece TPO roof membrane	•	•	•	•
Fully walkable roof	•	•	•	
Micro Diamond plate rock guard	•		•	•
LCI SolidStep triple entry solid steps on main door	•	•	•	
Single entry step on main door				•
Tinted safety glass windows	•	•	•	•
4G LTE and Wi-Fi ready	•	•	•	
Extended rain gutters	•	•	•	•
Furrion backup camera/observation prep	•	•	•	
Power Stab Jacks (Excluding single-axle models & 260BH, 275BH, 38BH, 38FL, 38FQ models)	•	•	•	
CONSTRUCTION STANDARD FEATURES				
24' x 8' Dyna Span subflooring	•	•	•	•
2" x 3" floor joists, 12" on center	•	•	•	•
Floorplan-specific frame	•	•	•	•
Full width outriggers	•	•	•	•
Triple-seal slide w/ steel C-channel moisture barrier	•	•	•	•
Tuf-Lok crush-resistant ductwork couplers	•	•	•	•
Color-coded unified wiring system	•	•	•	•
3-year fully transferable Limited Structural Warranty	•	•	•	•
OPTIONS				
SPRINGDALE TRAVEL TRAILER & TOY HAULER LEGACY PACKAGE (MANDATORY) - EXCLUDING MINI'S: Vaulted ceiling; power tongue jack; upgraded pressed countertops; led adjustable power awning; central monitoring panel; external tv hookup/mount (select West models); bedroom tv prep; heated & enclosed underbelly (slide models); solid steps; spare tire & carrier				
SPRINGDALE "NEXT LEVEL" PACKAGE 266RL, 271RL, 274RB, 280BH, 282BH, 293RK, 295BH, 296BH, 298BH, 301TR, 303BH, 311RE, 312RS, 333RE, 335BH): Smooth front metal, 7 cu. ft. stainless refrigerator; led tv; tri-fold sleeper sofa; "do-more" free-standing dinette; aluminum alloy wheels; decorative light fixture in slide				
SPRINGDALE "NEXT LEVEL" PACKAGE (MANDATORY) (38BH, 38FL, AND 38FQ): Smooth front metal; tri-fold sleeper sofa; led tv; "do-more" free-standing dinette; aluminum alloy wheels; decorative light in slide				
SPRINGDALE "NEXT LEVEL" PACKAGE (202RD, 220RD, 260BH, 27TH, 275BH, 32TH): Smooth front metal, 7 cu. ft. stainless refrigerator; led tv; "do-more" free-standing dinette, aluminum alloy wheels, decorative light in slide (where applicable)				
SPRINGDALE FIFTH WHEEL LEGACY PACKAGE (MANDATORY) (253FWRE, 272FWRE, 300FWBH, 302FWRK): Upgraded pressed countertops; LED adjustable power awning; central monitoring panel, external TV hookup/mount; bedroom TV prep; heated & enclosed underbelly; booth accent lighting; spare tire & carrier; 50 AMP service, wired/braced for 2nd A/C.				
50 AMP service, wired and braced for 2nd A/C Available on: (select east models) (N/A on Springdale Mini Single-Axle Travel Trailers)				
15,000 BTU A/C IPO 13,500 BTU A/C (select models)				
Free-standing table and chairs (select models)				
13,500 BTU direct-blow A/C (replaces the 8000 BTU, side-mount A/C) (Single Axle ONLY)				

BUILT FOR THE LONG HAUL



PRINT 10.2019

