

CROSSFIRE, BULLET & PREMIER TRAVEL TRAILERS

keystonerv.com/bullet

WESTERN BULLET



**Keystone RV
Company**

The ultimate
ownership experience.

The ultimate ownership experience.

The goal of Keystone RV Company is to surprise and delight our owners at each and every touchpoint. We're happy when our campers are happy, and we are committed to providing the very best ownership experience in the industry.



**Keystone RV
Company**

1 EASIER SHOPPING.

At Keystone, we make choosing an RV as easy as finding the Big Dipper on a dark summer night. With comprehensive online product information, Key Connect™ product advisors, and an unparalleled dealer network, we will help you select the perfect RV for your family's adventure.

2 INNOVATIVE THINKING.

The road's a nicer place when you have the industry's smartest features behind you. Keystone leads the pack in patented innovations that make our RVs safer, more comfortable, and easier to operate.

3 LONG HAUL QUALITY.

To keep you on the road, there are certain things we just won't build a Keystone RV without. Game-changing features like our Unified Wiring Standard, Tru-Fit™ five-point slide construction, and no-fail Tuf-Lok™ A/C duct joiners combined with exhaustive testing and inspections are some of the reasons why Keystone is able to offer our owners the industry's best 3-year limited structural warranty.

4 WORRY-FREE CUSTOMER SERVICE.

Wherever the road takes you, you're never too far from an authorized Keystone service center. We also offer live service assistance, ultra-fast parts shipping, online maintenance tips and tricks, and a single-point warranty claims policy. *That's* peace of mind.

5 KEYSTONE NATION.

When you choose Keystone, you become a part of one of the largest camping families in the country. We're Keystone Nation. A friendly community where people share photos, travel tips and amazing stories – all in the spirit of camaraderie and adventure. Come join us.

Experience the Bullet lifestyle by visiting [#keystonebullet](#)



Keystone EXCLUSIVE Innovations

Year after year, Keystone RV's experienced team delivers Built For the Long Haul quality you expect and exclusive innovations you won't find anywhere else.



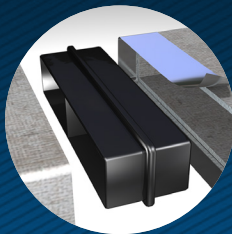
3-year Limited Structural Warranty, 1-year Limited Base Warranty

Every new Keystone RV comes with the industry's best three-year limited structural warranty AND a one-year limited base warranty. Ask your dealer, visit keystonerv.com, or call Keystone Owner Relations for details.



KeyTV™

No more connection guesswork or poor reception. KeyTV offers a game-changing, single point of control of over-the-air, cable, and satellite feeds. Visit us online for more information.



Tuf-Lok Thermoplastic Duct Joiners

Tuf-lok thermoplastic duct joiners form a permanent, crush-resistant seal in your air-conditioning duct.



Color-Coded Unified Wiring Standard

Easy-to-trace circuits simplify electrical and entertainment system troubleshooting.



In-floor Heating Ducts

Distributes heat evenly for greater comfort.



4G LTE and Wi-Fi Prep

All Bullets are equipped with a new antenna that integrates 4G LTE and Wi-Fi with standard VHF/UHF/AM/FM reception.



Tru-fit™ Slide Construction

A more durable slide room design that minimizes functional motor and structural stress, resists leaking.



291RLSWE IN FLAGSTONE DECOR



Coastal Cottage Style

Without question, Bullet is charting a new course in interior design within the RV industry. Taking cues from east coast cottage style, gray-painted cabinetry and wall coverings are paired with weathered wood-inspired resilient flooring. Crisp white marbled countertops, glass panel doors and stainless steel fixtures and appliances complete a fresh and tranquil environment for your family.



30R1PR IN SONOMA DECOR





more product detail at
www.keystonerv.com/bullet

New Bullet Features

- New graphics and sidewall color
- Laminated rear wall
- Lippert Solid Step® main entry steps
- Four electric stabilizer jacks
- Docking station
- Battery disconnect
- 51 cu. ft. pass-through storage, 40% wider baggage door (42" vs. 30")
- 8 cu. ft. refrigerator
- Full coverage backsplash
- Pop-up outlets in kitchen
- Drawers in bedroom
- Pillow-side shelves and dual 110V/USB outlets
- Theater seat IPO tri-fold
- Theater seat IPO u-shape dinette (221RBS only)
- **NEW!** 258RKSWE floorplan
- **NEW!** 291RLSWE floorplan
- **NEW!** 331BHSWE floorplan

Bullet | Top Features



Redesigned Bedroom

60"x80" queen bed with pillow-side shelves and dual 110V/USB outlets, storage drawers, and laundry chute.



Full Coverage Backsplash

Counter to cabinet backsplash protects your walls during meal prep and adds visual appeal.



51 cu. ft. Pass-Through Storage

40% wider door (42" vs. 30") with increased storage.



Dream Dinette

No more table legs getting in the way! Makes for easy setup and conversion into a bed.



8 cu. ft. Refrigerator

Pack more with 2 additional cu. ft.



Lippert® Solid Step® Main Entry Steps

Ultra stable and secure entry steps.



more product detail at
www.keystonerv.com/bullet

New Crossfire Features

- New graphics and sidewall color
- Laminated rear wall
- Walkable roof
- Power tongue jack
- Four electric stabilizer jacks
- Stainless steel sink
- **NEW!** 1850RB floorplan

Crossfire | Top Features



Electric Stabilizer Jacks

All units now come standard with electric stabilizer jacks.



Power Tongue Jack

Work smart, not hard. Less effort and less time.



Stainless Steel Sink & Faucet

Durable, won't chip or crack.



Low Profile Range Hood

Sleek appearance improves space above range and increases field of view.



Walkable Roof

More rigid and easier to maintain.



100% Hardwood Cabinet Doors

A modern touch that provides design versatility and durability.



more product detail at
www.keystonerv.com/premier

New Premier Features

- Laminated rear wall
- Walkable roof
- 51 cu. ft. pass-through storage, 40% wider baggage door (42" vs. 30")
- Pillow-side shelves and dual 110V/USB outlets
- Four electric stabilizer jacks
- Docking station
- Full coverage backsplash
- Popup outlets in kitchen
- Drawers in bedroom
- Electric fireplaces (26RB, 29BH, 30RI, 34BI, 34RI)
- 50" TVs (26RB, 29BH, 30RI, 34BI, 34RI)
- **NEW!** 23RBPR floorplan

Premier | Top Features



Fireplace/50" TV (26RBPR, 29BHPR, 30RIPR, 34BIPR, and 34RIPR)
 Bigger 50" TV and all new fireplace.



Vaulted Ceilings
 Interior vaulted ceilings create almost 7 ft. tall ceilings!



LG® Solid Surface Kitchen Countertops
 This upgraded countertop is made of nonporous materials that reduce bacteria growth and is easy to maintain.



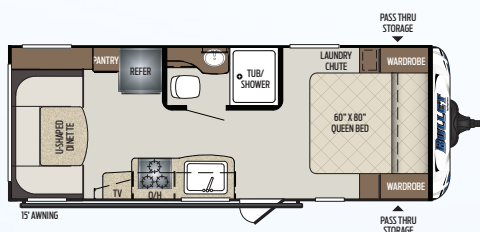
Porcelain Toilet
 Easy to use and easy to clean.



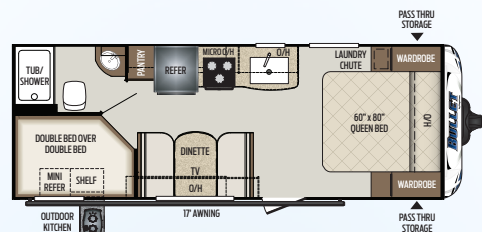
Full Fiberglass Front Cap
 Premier's full fiberglass front cap features Keystone's KeyShield™ five-layer paint technology that prevents cracking and fading.



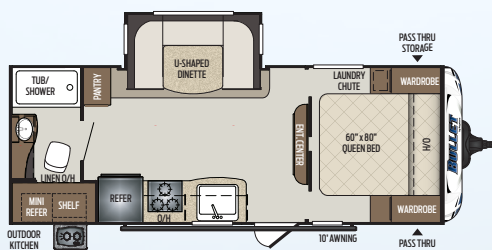
Docking Station w/ Battery Disconnect
 Easily accessible convenience center with water connections, KeyTV™ hookups, stabilizer jack switches, and our first ever battery disconnect.



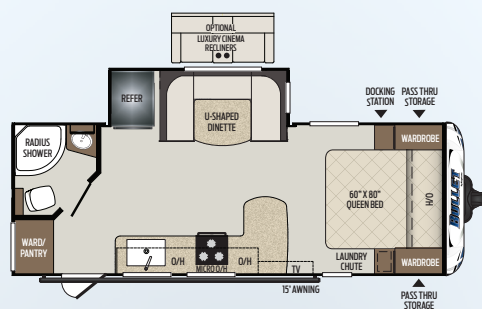
210RUDWE | Rear u-shaped dinette
Weight: 4286 LBS. | Length: 26' 5"



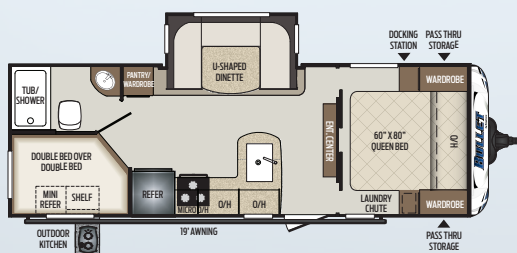
211BHSWE | Bunkhouse, non-slide
Weight: 4370 LBS. | Length: 26' 1"



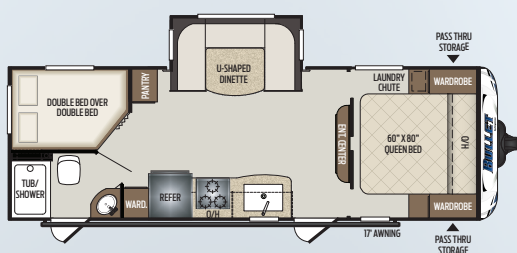
212RBSWE | Rear bath, dinette slide
Weight: 4826 LBS. | Length: 26' 6"



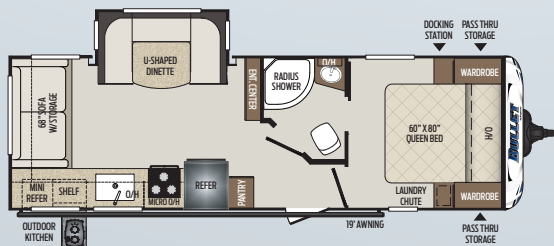
221RBSWE | Rear bath, open concept
Weight: 4680 LBS. | Length: 26' 8"



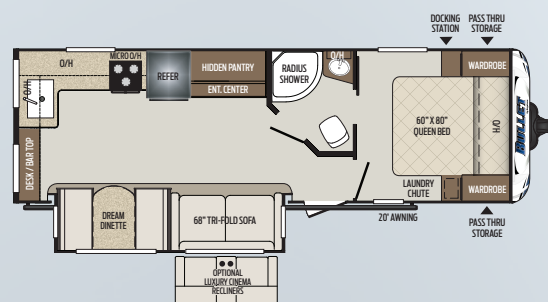
243BHSWE | Bunkhouse, outside kitchen
Weight: 5082 LBS. | Length: 28' 10"



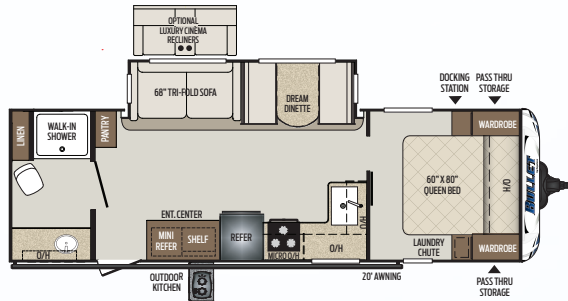
247BHSWE | Bunkhouse, two entries
Weight: 5110 LBS. | Length: 29' 4"



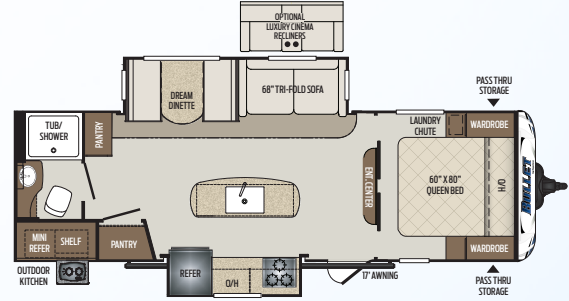
257RSSWE | Rear sofa, dinette slide
Weight: 5275 LBS. | Length: 29' 11"



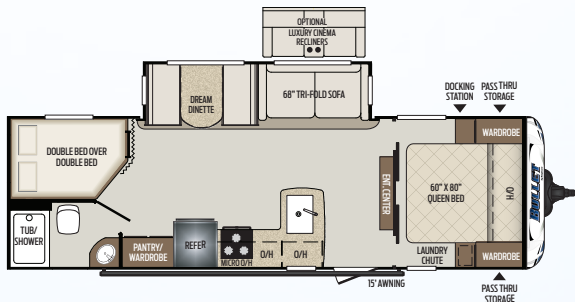
NEW! 258RKSWE | Rear kitchen, hidden pantry
Weight: TBD | Length: 29' 11"



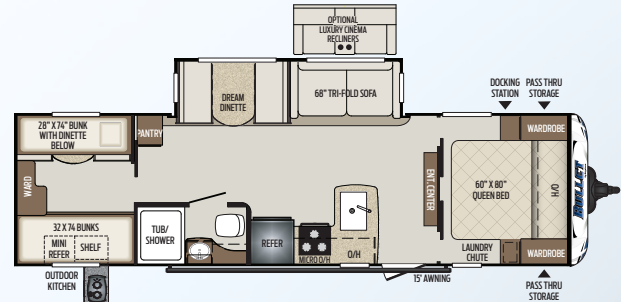
261RBSWE | Rear bath, outside kitchen
Weight: 5680 LBS. | Length: 31'



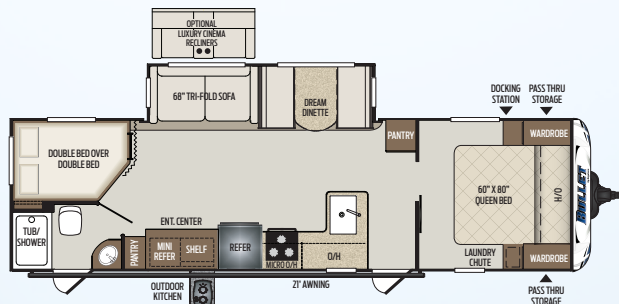
265RBIWE | Rear bath, island kitchen
Weight: 5996 LBS. | Length: 30'10"



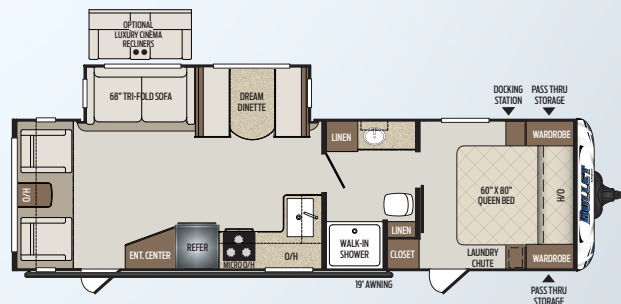
273BHSWE | Bunkhouse, super-slide
Weight: 5498 LBS. | Length: 31'9"



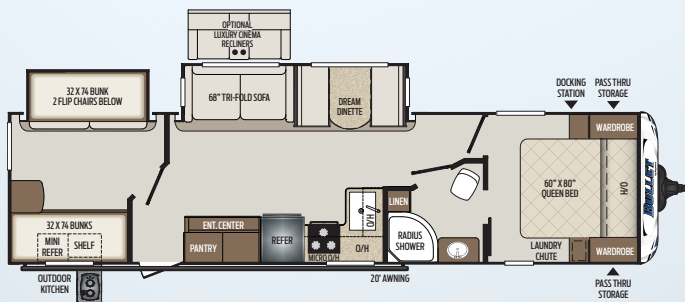
287QBSWE | Quad bunk room, outside kitchen
Weight: 5914 LBS. | Length: 33'10"



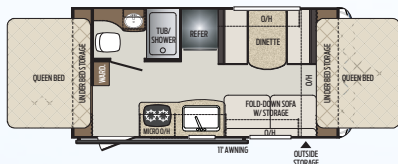
290BHSWE | Bunkhouse, dual entry, outside kitchen
Weight: 5980 LBS. | Length: 33'9"



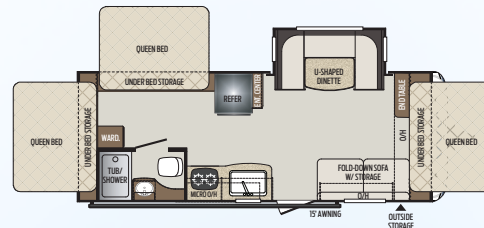
NEW! **291RLSWE** | Rear living, dual entry
Weight: TBD | Length: 33'11"



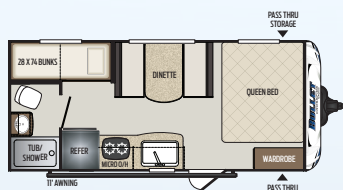
NEW! **331BHSWE** | Bunkroom w/slide, outside kitchen
Weight: TBD | Length: 37'6"



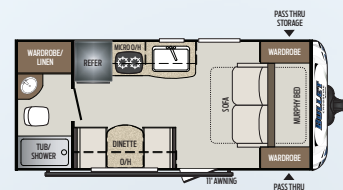
1650EX | Two-tent expandable
Weight: 3459 LBS. | Length: 19' 6"



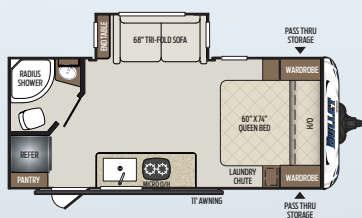
2190EX | Three-tent expandable w/dinette slide
Weight: 4515 LBS. | Length: 24' 11"



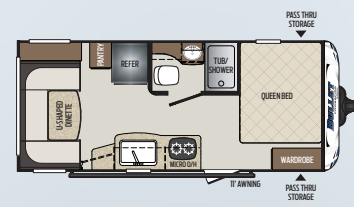
1700BH | Bunkhouse, single axle
Weight: 3377 | Length: 21' 4"



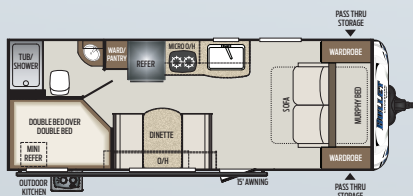
1800RB | Rear bath w/murphy bed
Weight: 3314 LBS. | Length: 21' 4"



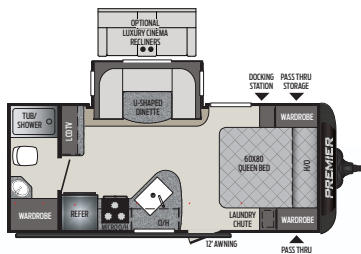
NEW! 1850RB | Rear bath w/sofa slide
Weight: 3785 LBS. | Length: 22' 4"



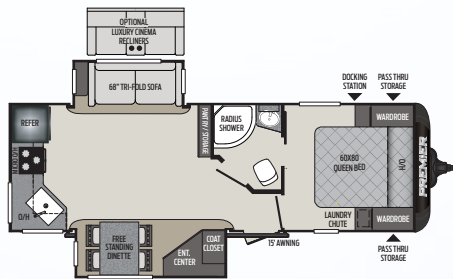
1900RD | Rear dinette, single axle
Weight: 3415 LBS. | Length: 21' 11"



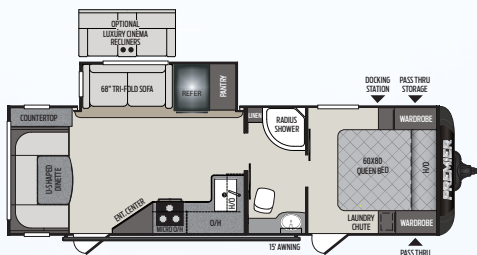
2200BH | Bunkhouse, outside kitchen
Weight: 4126 LBS. | Length: 25' 4"



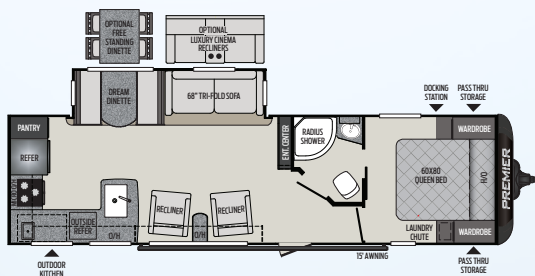
19FBPR | Rear bath, dinette slide
Weight: 4402 LBS. | Length: 24' 3"



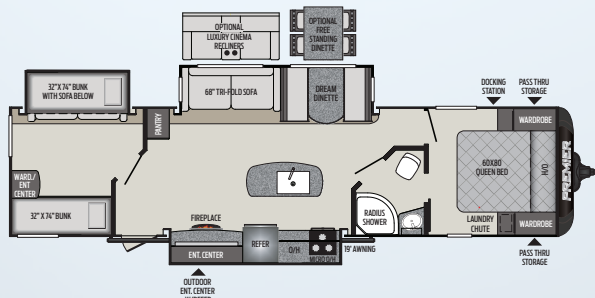
24RKPR | Rear kitchen, opposing slides
Weight: 5568 LBS. | Length: 29' 6"



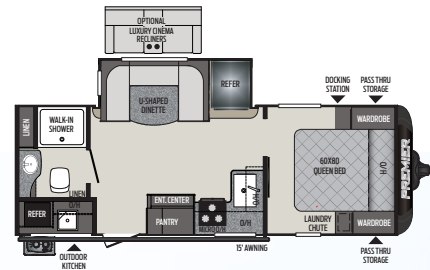
26UDPR | Rear dinette, dual entry
Weight: 5519 | Length: 30' 11"



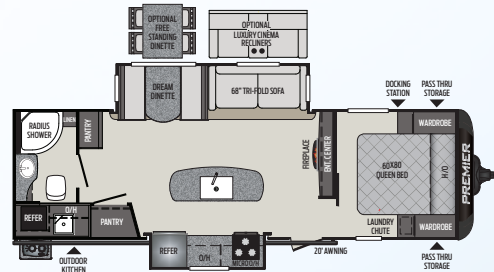
29RKPR | Rear kitchen, double recliners
Weight: 6154 LBS. | Length: 34' 5"



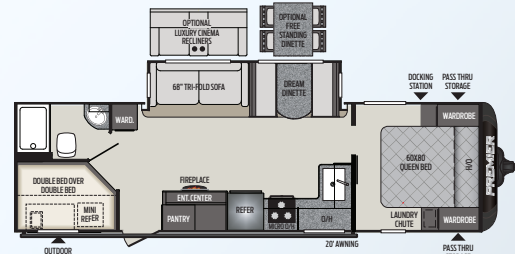
34BIPR | Bunkroom w/ slide, island kitchen, outside entertainment
Weight: 7285 LBS. | Length: 38' 1"



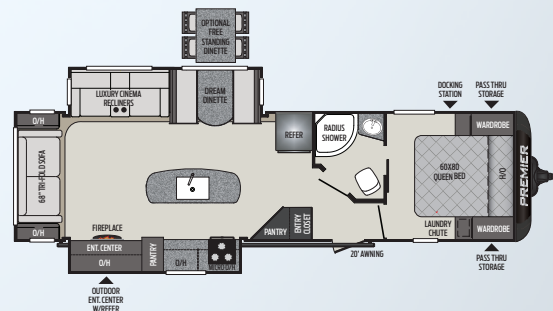
NEW! 23RBPR | Rear bath, dinette slide, outside kitchen
Weight: TBD LBS. | Length: 26' 6"



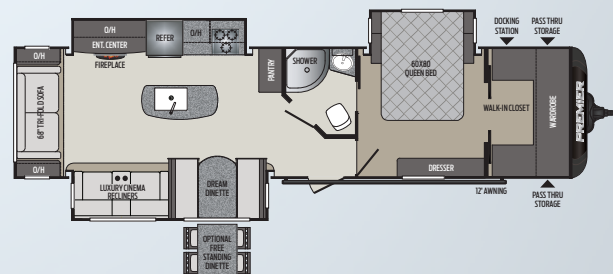
26RBPR | Rear bath, island kitchen, outside kitchen
Weight: 6178 LBS. | Length: 32'



29BHPR | Bunkhouse, outside kitchen
Weight: 6000 LBS. | Length: 33' 4"



30RIPR | Rear living, island kitchen, outside entertainment
Weight: 6871 LBS. | Length: 35' 11"



34RIPR | Rear living, bed slide, walk-in closet
Weight: 7432 LBS. | Length: 38' 3"



CROSSFIRE TRAVEL TRAILERS

MODEL	WEIGHT	CARRYING CAPACITY	HITCH WEIGHT	FRESH WATER	WASTE WATER	GRAY WATER	LPG	LENGTH*	WIDTH	HEIGHT	AWNING
1650EX	3459	1241	470	43	30	30	40	19' 6"	8'	10' 5"	11'
1700BH	3377	1323	375	43	30	30	40	21' 4"	8'	10' 4"	11'
1800RB	3314	1086	480	43	30	30	40	21' 4"	8'	10' 5"	11'
1850RB	3950	750	430	43	30	30	40	22' 4"	8'	10' 10"	11'
1900RD	3477	1223	490	43	30	30	40	21' 11"	8'	10' 5"	11'
2190EX	4515	1785	610	43	30	30	40	24' 11"	8'	10' 4"	15'
2200BH	4126	2174	425	43	30	30	40	25' 4"	8'	10' 4"	15'

BULLET TRAVEL TRAILERS

MODEL	WEIGHT	CARRYING CAPACITY	HITCH WEIGHT	FRESH WATER	WASTE WATER	GRAY WATER	LPG	LENGTH*	WIDTH	HEIGHT	AWNING
210RUDWE	4286	2114	510	43	30	30	40	26' 5"	8'	10' 10"	15'
211BHSWE	4370	2030	470	43	30	30	40	26' 1"	8'	10' 9"	17'
212RBSWE	4826	1974	614	43	30	30	40	26' 6"	8'	10' 9"	10'
221RBSWE	4680	1720	490	43	30	30	40	26' 8"	8'	10' 9"	15'
243BHSWE	5082	1418	630	43	30	30	40	28' 10"	8'	10' 9"	19'
247BHSWE	5110	1890	600	43	30	30	40	29' 4"	8'	10' 9"	17'
257RBSWE	5275	2025	576	43	30	60	40	29' 11"	8'	10' 9"	19'
258RBSWE	TBD	TBD	TBD	43	30	60	40	29' 11"	8'	TBD	20'
261RBSWE	5680	1920	610	43	30	60	40	31'	8'	10' 9"	19'
265RBIWE	5996	1604	600	43	30	60	40	30' 10"	8'	10' 8"	17'
273BHSWE	5498	2102	675	43	30	30	40	31' 9"	8'	10' 9"	15'
287QBSWE	5914	1686	746	43	30	30	40	33' 10"	8'	10' 8"	15'
290BHSWE	5978	1622	690	43	30	60	40	33' 9"	8'	10' 8"	21'
291RLSWE	TBD	TBD	TBD	43	30	30	40	33' 11"	8'	TBD	15'
331BHSWE	TBD	TBD	TBD	43	30	30	40	37' 6"	8'	TBD	20'

PREMIER TRAVEL TRAILERS

MODEL	WEIGHT	CARRYING CAPACITY	HITCH WEIGHT	FRESH WATER	WASTE WATER	GRAY WATER	LPG	LENGTH*	WIDTH	HEIGHT	AWNING
19FBPR	4402	2098	480	43	30	30	40	24' 3"	8'	11'	12'
23RBPR	5355	1645	790	43	30	60	40	27' 6"	8'	11'	15'
24RKPR	5604	1896	655	43	30	60	40	29' 6"	8'	11'	15'
26UDPR	5519	1981	680	43	30	30	40	30' 11"	8'	11'	15'
26RBPR	6178	1322	755	43	30	60	40	32'	8'	11'	20'
29BHPR	6000	1600	745	43	30	60	40	33' 4"	8'	11' 1"	20'
29RKPR	6154	1446	685	43	30	60	40	34' 5"	8'	11' 1"	15'
30RIPR	6871	1329	865	43	30	60	40	35' 11"	8'	11' 2"	20'
34BIPR	7398	2002	975	43	30	30	40	38' 1"	8'	11' 4"	19'
34RIPR	7494	1906	980	43	30	60	40	38' 3"	8'	11' 4"	12'

DISCLAIMER: Product information is as accurate as possible as of the date of publication of this brochure. All features, floor plans, and specifications in this brochure are subject to change without notice. Please also consult Keystone's web site at www.keystonerv.com for more current product information and specifications. Tow Vehicle Disclaimer. CAUTION: Owners of Keystone recreational vehicles are solely responsible for the selection and proper use of tow vehicles. All customers should consult with a motor vehicle manufacturer or their dealer concerning the purchase and use of suitable tow vehicles for Keystone products. Keystone disclaims any liability or damages suffered as a result of the selection, operation, use or misuse of a tow vehicle. KEYSTONE'S LIMITED WARRANTY DOES NOT COVER DAMAGE TO THE RECREATIONAL VEHICLE OR THE TOW VEHICLE AS A RESULT OF THE SELECTION, OPERATION, USE OR MISUSE OF THE TOW VEHICLE. *Length is defined as the distance from the centerline of hitch pin/coupler to rear bumper of trailer. Please review owner's manual prior to purchase for more information on service warranties, extended use, towing and maintenance. Owner's manuals can be found at keystonerv.com.

BULLET OPTIONS

- 15,000 BTU A/C
- Theater seat IPO tri-fold sofa
- Theater seat IPO u-shaped dinette (221 only)

PREMIER OPTIONS

- 50 AMP service w/2nd A/C prep (N/A 19FBPR, 23RBPR, 24RKPR)
- 2nd 13,500 BTU A/C (N/A 19FBPR, 23RBPR, 24RKPR)
- Theater seat IPO tri-fold sofa
- Theater seat IPO u-shaped dinette
- Free-standing table and chairs (N/A 19FBPR, 23RBPR, 26UDPR)