

ASTORIA

FIFTH WHEELS BY DUTCHMEN

ASTORIA



FIFTH WHEELS BY



Dutchmen®

Legendary Innovation. Trailblazing Value.

ASTORIA

GET READY FOR A GREAT ADVENTURE.

Astoria is an all-new, fifth wheel delivering highly visible, value-driven standard features. The inclusions and design are timeless, yet forward trending to address the growing demand for a turnkey option by consumers who want all the features and require the highest quality.

Standard in Every Astoria.



All Weather
Thermal
Package



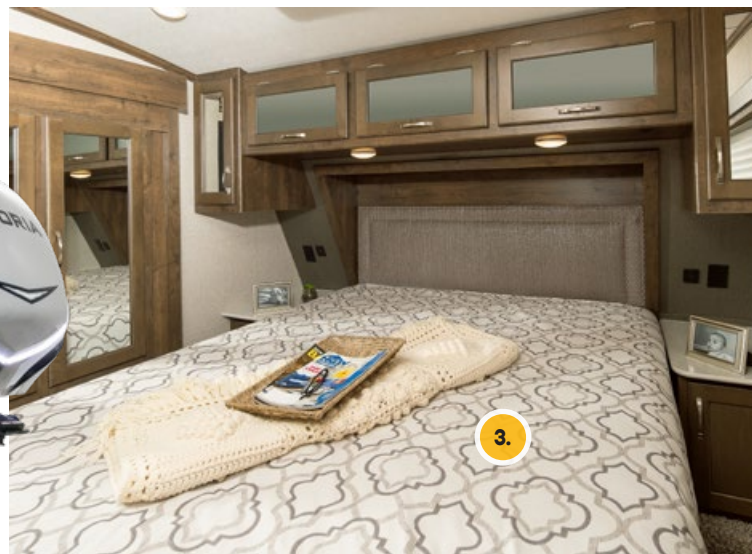
One-touch
auto leveling



Premium
Entry Steps

The Next Generation of Affordable Luxury.

1. LARGE STAINLESS STEEL APPLIANCES
2. AMPLE STORAGE SPACE
3. 60X80 RESIDENTIAL QUEEN BED
4. ONE-TOUCH AUTO LEVELING SYSTEM
5. OVERSIZED PASS THROUGH STORAGE W/ LIGHTS

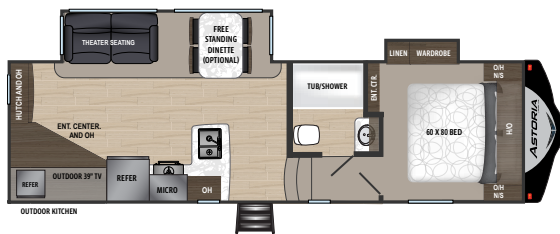




ASTORIA 3003RLF | GUNMETAL

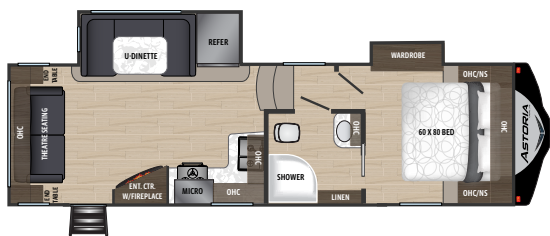


Astoria Floorplans



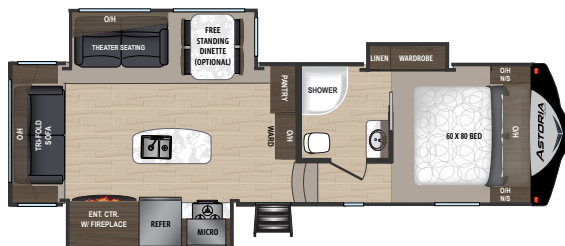
ASTORIA | 2503REF

Ext. Length: 30' 0" Weight: 8,090 lbs. Sleeps: 4-6



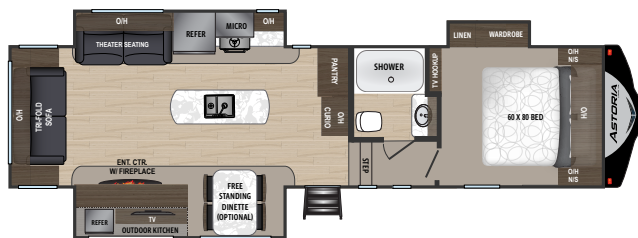
ASTORIA | 2513RLF

Ext. Length: 29' 6" Weight: 7,759 lbs. Sleeps: 4-6



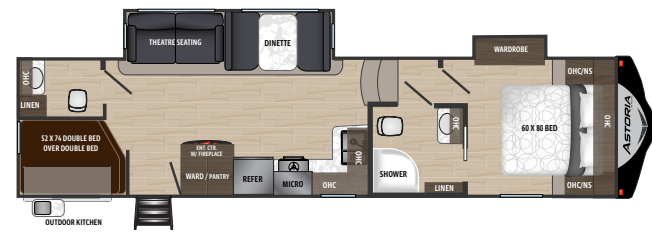
ASTORIA | 2953RLF

Ext. Length: 33' 4" Weight: 9,095 lbs. Sleeps: 6-8



ASTORIA | 3003RLF

Ext. Length: 34' 5" Weight: 9,399 lbs. Sleeps: 6-8



ASTORIA | 3123BHF

Ext. Length: 35' 4" Weight: 9,096 lbs. Sleeps: 8-10

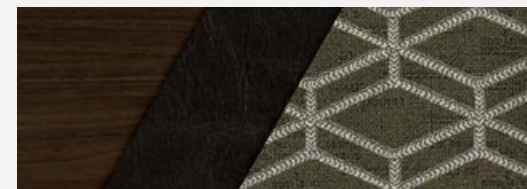


ASTORIA | 3273MBF

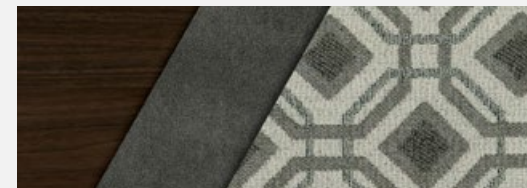
Ext. Length: 36' 0" Weight: 9,934 lbs. Sleeps: 8-10

Interior Décor

BRINDLE



GUNMETAL



DISCLAIMER: Product information is as accurate as possible as of the brochure publication date. All features, floorplans and specifications in this brochure are subject to change without notice. Please consult Dutchmen's website at www.Dutchmen.com for current product information and specifications. Tow Vehicle Disclaimer. **CAUTION:** Owners of Dutchmen recreational vehicles are solely responsible for the selection and proper use of tow vehicles. All customers should consult with a motor vehicle manufacturer or their dealer concerning the purchase and use of suitable tow vehicles for Dutchmen products. Dutchmen disclaims any liability or damages suffered as a result of the selection, operation, use or misuse of a tow vehicle. DUTCHMEN'S LIMITED WARRANTY DOES NOT COVER DAMAGE TO THE RECREATIONAL VEHICLE OR THE TOW VEHICLE AS A RESULT OF THE SELECTION, OPERATION, USE OR MISUSE OF THE TOW VEHICLE. REFERENCE DUTCHMEN MANUFACTURING OWNERS MANUAL FOR LIMITED WARRANTY DETAILS.

Astoria Standards and Options

PREMIUM PACKAGE - EXTERIOR FEATURES

13,500 BTU Ducted AC
30# LP Gas Bottles
Battery Disconnect
Oversized Dark Tinted Safety Glass Windows
Easy Lube Axles
Friction Hinge Entry Door
Large Entry Assist Handle
LP Quick Disconnect (on outside kitchen models)
Magnetic Baggage Door Catches
Exterior Shower
Outside Speakers w/ LED Lights
Painted Fiberglass Front Cap w/ LED Lights
Hardwood Maple Cabinetry
Patio & Hitch Lights
Power Awning w/ LED Lights
Power Landing Gear
Slam Latch Baggage Doors

Spare Tire Carrier
TV Antenna
Aluminum Wheels
Back Up Camera Prep
Black Tank Flush
Fiberglass Exterior
Radial Tires
Solar Prep
Roto-Flex Pin Box
2" Rear Receiver Hitch

PREMIUM PACKAGE - INTERIOR FEATURES

35k BTU Furnace
6 Gallon Gas/Electric DSI Water Heater
60" x 80" Residential Mattress
8 Cubic Foot Double Door Refer
Bath Skylight
Bedroom TV Hookup

Bluetooth Stereo
Cable/Satellite TV Hookup w/ Booster
Centralized Utility Panel
Flush Mounted Glasstop Three Burner Range Top w/ 21" Oven
High-Rise Kitchen Faucet w/ Sprayer
Premium Audio Entertainment Soundbar
LED Accent Lighting
LED Lighting Throughout
Microwave
Night Shades Throughout Living Area
Porcelain Toilet
Range Hood with 12V Fan/Light
Skylight in Kitchen/Living Room
Stainless Steel Appliances
Tri-Fold Deluxe Sofa
Flush Floor Master Bedroom Construction

MANDATORY OPTIONS

Premium Package
All Weather Thermal Package
Automatic Leveling System
High Definition LED TV
iN-Command Pro V1.05 w/ Touch Screen
Glass Mounted Fireplace w/ 5K BTU Furnace
Solid Surface Countertops
50 AMP Service w/ 2nd A/C Prep
Premium StepAbove Entry Step
Theatre Seating (model specific)
15,000 BTU A/C IPO 13.5

EXTERIOR OPTIONS

2nd A/C - 13.5 BTU Non Ducted A/C

INTERIOR OPTIONS

Free Standing Dinette & Chairs (model specific)



100% PRE-DELIVERY INSPECTION

At Dutchmen, quality is our standard. Every single Dutchmen RV that comes off the line receives its own pre-delivery inspection.



THE INDUSTRY'S BEST RV WARRANTY

With this industry-best warranty, we take the guessing game out of what is and isn't covered.



THE LEADER IN PARTS AND SERVICE

When only the best RV services will suffice, our industry-leading parts and service department is ready to help you get back on the road—and stay there longer than ever before.



Dutchmen

Legendary Innovation. Trailblazing Value.

Astoria Specifications

DIMENSIONS			WEIGHTS (LBS.)			TANKS (GALS.)			
FLOORPLAN	*EXTERIOR TRAVEL LENGTH	EXTERIOR WIDTH	EXTERIOR HEIGHT (WITH A/C)	**AVERAGE SHIPPING WEIGHT	DRY HITCH WEIGHT	CARGO CARRYING CAPACITY	***FRESH WATER CAPACITY	GREY WATER CAPACITY	BLACK WATER CAPACITY
2503REF	30' 0"	8'	12' 5"	8,090	1,676	2,470	50	78	39
2513RLF	29' 6"	8'	12' 11"	7,759	1,454	2,191	50	39	39
2953RLF	33' 4"	8'	12' 3"	9,055	1,733	1,505	50	67	39
3003RLF	34' 5"	8'	12' 11"	9,399	1,700	2,700	50	78	56
3123BHF	35' 4"	8'	12' 3"	9,096	1,688	1,464	50	67	67
3273MBF	36' 0"	8'	12' 10"	9,934	1,592	2,066	50	67	39

*Length is defined as the distance from the centerline of hitch pin/coupler to rear bumper of trailer. **Our weights represent how most units are built, inclusive of many commonly ordered options.

***Fresh water capacity includes water heater capacity.

PO BOX 2000 • 2164 Caragana Court • Goshen, Indiana 46527 • Sales: 574.537.0600 • www.dutchmen.com

DISCLAIMER: Product information is as accurate as possible as of the brochure publication date. All features, floorplans and specifications in this brochure are subject to change without notice. Please consult Dutchmen's website at www.Dutchmen.com for current product information and specifications. Tow Vehicle Disclaimer. CAUTION: Owners of Dutchmen recreational vehicles are solely responsible for the selection and proper use of tow vehicles. All customers should consult with a motor vehicle manufacturer or their dealer concerning the purchase and use of suitable tow vehicles for Dutchmen products. Dutchmen disclaims any liability or damages suffered as a result of the selection, operation, use or misuse of a tow vehicle. DUTCHMEN'S LIMITED WARRANTY DOES NOT COVER DAMAGE TO THE RECREATIONAL VEHICLE OR THE TOW VEHICLE AS A RESULT OF THE SELECTION, OPERATION, USE OR MISUSE OF THE TOW VEHICLE. REFERENCE DUTCHMEN MANUFACTURING OWNERS MANUAL FOR LIMITED WARRANTY DETAILS. ©2019 Dutchmen. ASTORIA-2019 Printed in U.S.A.

www.dutchmen.com

Visit us online to see all of the Dutchmen brands, innovative models and spacious floor plans.