

# SPYDER

TOY HAULER



Legendary quality.  
Redefining recreation.

**WINNEBAGO**  
BOUND BY THE W™



## SPYDER FIFTH WHEEL

### THE SPACE AND SECURITY YOU NEED TO HAUL IT ALL

It's time for all your toys to meet your next favorite fifth wheel. The unparalleled storage of the feature-packed Spyder Fifth Wheel means that wherever your adventure, more of your gear gets to come along for the ride.

- **W Series Foundation** Built from the ground up on legendary W Series Foundation's construction.
- **Secure Space** Strap in and buckle up. With a massive 12-14 ft. of garage space, your toys will have plenty of elbow room. And with dependable frame-bolted D-rings, your gear stays exactly where you want.
- **Zero Gravity Ramp** The industry-leading Zero Gravity cargo ramp offers zero resistance, zero sweat loading and unloading your gear.
- **Well-Appointed Kitchen** Fuel up in the Spyder Fifth Wheel's fully loaded kitchen area, featuring top-notch appliances, including recessed 3 burner range w/oven, large sink w/ sink covers and 8 cu. ft. refrigerator.
- **Power Player** Play on and off the grid with the Spyder Fifth Wheel's on-board generator, 100-gallon freshwater capacity and a 30-gallon fuel tank.





## SPYDER TRAVEL TRAILER

THERE'S NO SUCH THING AS TOO MANY TOYS.



Protect all your toys while leaving plenty of room for those who play with them. Spyder's open floorplan frees up the outdoors for adventure with all the gear you need to love every mile.

- **Spacious & Secure** The dependable frame-bolted d-rings in Spyder's 14-15 ft. garage mean your gear won't be going on any extreme adventures before you arrive.
- **Hookup-Free Hookup** With an on-board generator, 100-gallon freshwater capacity and a 30-gallon fuel tank, the adventure isn't over until you say so.
- **Private Bedroom Rule** your (towable) kingdom with your own private bedroom-and optional King-sized bed - in every floorplan.
- **Feature-Filled Kitchen** Dig into a full-feature kitchen including top-notch appliances, solid surface countertops, a recessed 3-burner range with oven, a large sink with sink covers, and 8 cu. ft. refrigerator.
- **Zero Gravity Ramp** The Spyder features a Zero Gravity cargo ramp, making loading and unloading easy.

# WINNEBAGO SPYDER FIFTH WHEEL

THE SPACE AND SECURITY  
YOU NEED TO HAUL IT ALL



-  Visit [Winnebago.com](http://Winnebago.com) for more info
-  Join a boundless community of adventurers at [Witclub.com](http://Witclub.com)



Interior and exterior photos are of the 29SFW floorplan with Noble interior decor.



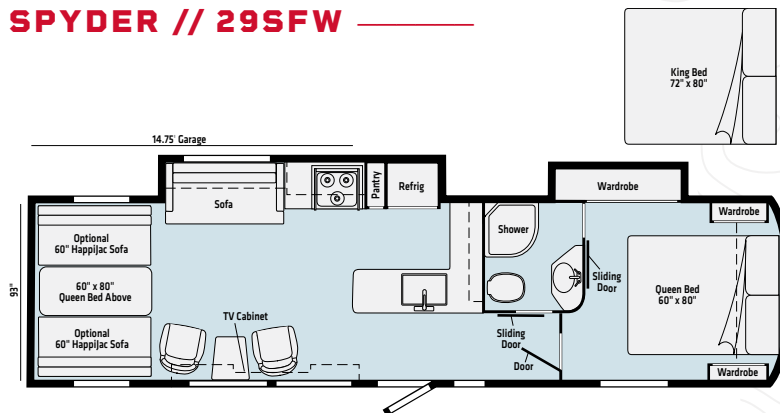
The massive Toy Hauler garage features dependable frame-bolted D-Rings that keep your favorite gear protected and latched down, no matter what terrain comes your way.



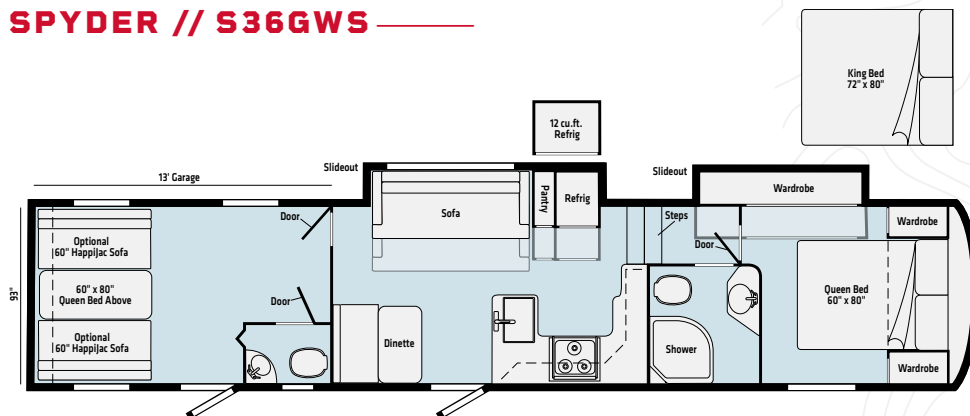
All floorplans include a private bedroom, King bed option, and kitchen area with top-of-the-line appliances.



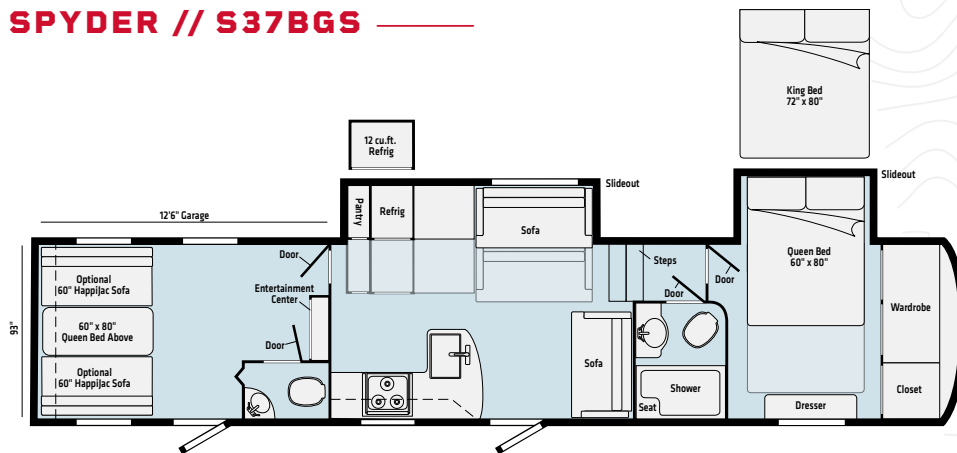
## SPYDER // 29SFW



## SPYDER // S36GWS



## SPYDER // S37BGS



## STANDARD FEATURES

- Solid Stained Hardwood Doors and Drawers
- LED Interior Lighting
- Full Extension Metal Drawer Guides
- Stainless Steel Kitchen Sink w/ Residential Style Faucet
- Recessed 3 burner Cooktop with Glass cover and Oven
- 30" Convection Microwave
- 8 cu. Gas/Electric Refrigerator
- 15K BTU Ducted A/C System (*True Trax*)
- 10 Gal DSI 110/12V Water Heater w/ Bypass
- Large Shower w/Skylight
- Porcelain Toilet w/ Foot Flush
- 60" x 80" Residential Queen Bed
- Cold Crack Resistant Floor
- Cable TV & Satellite prep
- DVD/CD/AM/FM/Dual Zone Ent. w/ HDMI and Bluetooth
- Night Shades
- LED TV
- USB Charge Ports
- Power Vent Fan
- 30,000 BTU Furnace
- 55 Amp/ 12V Converter
- 50 Amp service w/ 2nd A/C prep
- Power Cord w/ LED Light
- Aluminum Frame
- Rear Ramp Door
- In-Wall Heat Ducts
- Beaver Tail Rear End
- 2500 lb. tie downs
- Exterior High Mount Loading Lights
- Aluminum Entrance Steps
- Wide Body Construction
- Aerodynamic front cap w/ integrated LED Lighting
- Aluminum Framed & Lamination Sidewalls
- Tinted Safety Glass Windows
- Aluminum Rims
- Spare Tire
- Manual Rear Stabilizers
- Universal Docking Station w/ Black Tank Flush
- Heated and Enclosed Underbelly w/ Thermo Foil insulation
- LED Exterior Lights
- Twin 30# LP Tanks
- Exterior Speakers
- Rear View Camera Prep
- Power Awning w/LED Light
- Roof Mount Solar Prep
- 30 Gal Fuel Station w/ Gen Prep
- Rear Ramp Door
- Leaf Spring Suspension
- HD Axles w/ brakes
- Battery Disconnect Switch
- Exterior LP Quick Connect
- 30" x 72" Radius Entry Door w/ Window
- Roof Ladder (*side mount*)
- Large 1.5" Fresh Water Drain Valve
- Laminated Fiberglass Exterior
- Walk-on Roof Decking
- Radiant Foil Roof and Front Cap Insulation
- 1 Piece TPO Roof Membrane
- TV Antenna w/ Wifi Prep
- Large Fold Away Entry Grab Handle
- Exterior Shower
- Winterization Valve

## OPTIONS

- Rear ramp patio system with folding rails
- Rear ramp patio screen (*N/A w/ 3-Season Garage Wall*)
- Power HappiJac Bed with Convertible Sofa
- 3-Season Garage Wall (*N/A 29SFW*) (*N/A w/ Rear Ramp Patio Screen*)
- 32" LED TV in Bedroom
- King Bed
- 12 Cubic Foot Refrigerator
- Onan 5500 Gen
- 2nd 13.5K BTU Air Conditioner
- 12 V Heat Pads
- (2) 100-Watt Solar Panels
- Rota-Flex Pin Box
- Electric 6-Point Level Up

# WINNEBAGO SPYDER TRAVEL TRAILER

THERE'S NO SUCH THING  
AS TOO MANY TOYS



- i** Visit [Winnebago.com](http://Winnebago.com) for more info
- +** Join a boundless community of adventurers at [Witclub.com](http://Witclub.com)



Interior photos are of the 29STT floorplan with Noble decor.  
Exterior photo is of the 23FB floorplan.



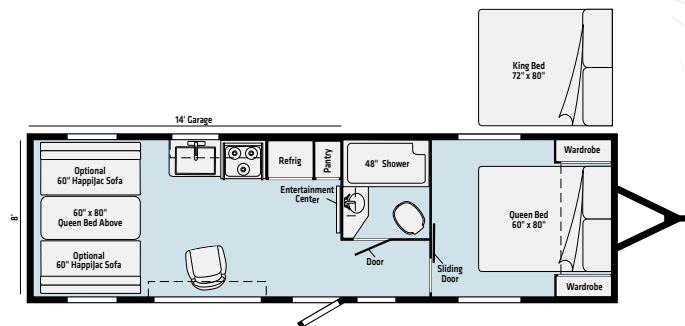
The massive Toy Hauler garage features dependable frame-bolted D-Rings that keep your favorite gear protected and latched down, no matter what terrain comes your way.



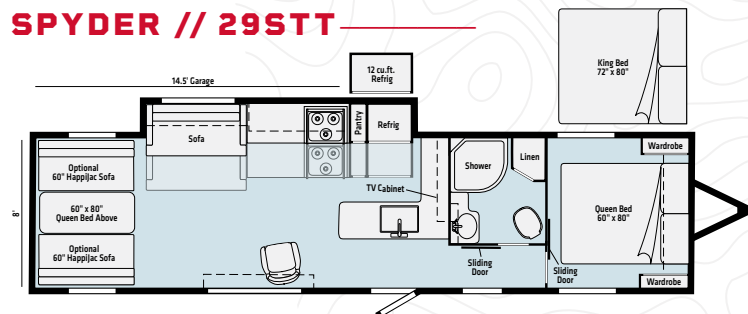
All floorplans include a private bedroom, king bed option, and kitchen area with top-of-the-line appliances.



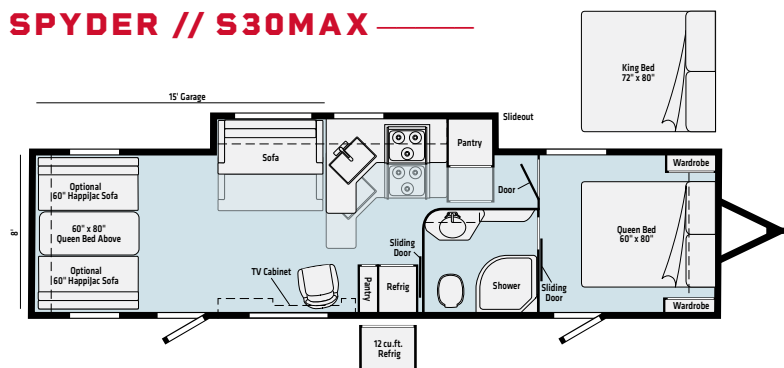
## SPYDER // 23FB



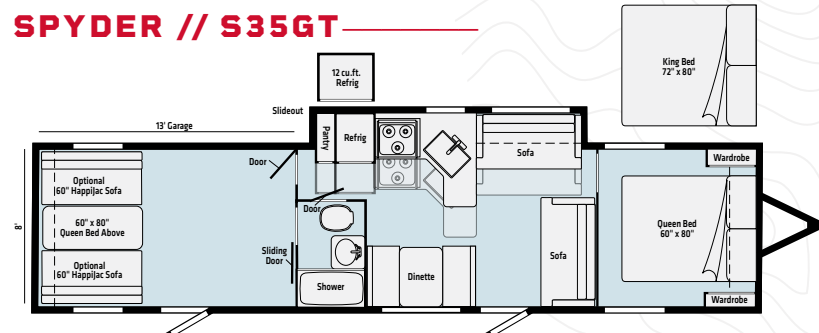
## SPYDER // 29STT



## SPYDER // S30MAX



## SPYDER // S35GT



## STANDARD FEATURES

- Solid Stained Hardwood Doors and Drawers
- LED Interior Lighting
- Full Extension Metal Drawer Guides
- Stainless Steel Kitchen Sink w/ Residential Style Faucet
- Recessed 3 burner Cooktop with Glass cover and Oven
- Microwave
- 8 cu. Gas/Electric Refrigerator
- 15K BTU Ducted A/C System (*True Trax*)
- 10 Gal DSI 110/12V Water Heater w/ Bypass
- Large Shower w/Skylight
- Porcelain Toilet w/ Foot Flush
- 60" x 80" Residential Queen Bed
- Cold Crack Resistant Floor
- Cable TV & Satellite prep
- DVD/CD/AM/FM/Dual Zone Ent. w/ HDMI and Bluetooth
- Night Shades
- LED TV
- USB Charge Ports
- Power Vent Fan
- 30,000 BTU Furnace
- 55 Amp/12V Converter
- 30 Amp Service
- Power Cord w/ LED Light
- Aluminum Frame
- Rear Ramp Door
- In-Wall Heat Ducts
- Beaver Tail Rear End
- 2500 lb. tie downs
- Exterior High Mount Loading Lights
- Aluminum Entrance Steps
- Wide Body Construction
- Black Diamond Rock Shield
- Aluminum Framed & Lamination Sidewalls
- Tinted Safety Glass Windows
- Tires w/ Aluminum Rims
- Spare Tire
- Power Tongue Jack
- Manual Stabilizers
- Universal Docking Station w/ Black Tank Flush
- Heated and Enclosed Underbelly w/ Thermo Foil insulation
- LED Exterior Lights
- Twin 30# LP Tanks
- Exterior Speakers
- Rear View Camera Prep
- Power Awning w/LED Light
- Roof Mount Solar Prep
- 30 Gal Fuel Station w/ Gen Prep
- Rear Ramp Door
- Leaf Spring Suspension
- HD Axles w/ brakes
- Aerodynamic front cap w/ integrated LED Lighting, Gravel Guard
- Battery Disconnect Switch
- Exterior LP Quick Connect
- 30" x 72" Radius Entry Door w/ Glass
- Roof Ladder (*side mount*)
- Large 1 1/2" Fresh Water Drain Valve
- Laminated Fiberglass Exterior
- Walk-on Roof Decking
- Radiant Foil Roof and Front Cap Insulation
- 1 Piece TPO Roof Membrane
- TV Antenna w/ Wifi Prep
- Large Fold Away Entry Grab Handle
- Exterior Shower
- Winterization Valve

## OPTIONS

- Rear ramp patio system with folding rails
- Rear ramp patio screen
- Power HappiJac Bed with Convertible Sofa
- 32" LED TV in Bedroom
- 50 amp Service & 2nd A/C Prep
- King Bed
- 12 Cubic Foot Refrigerator (*N/A 23FB*)
- Onan 4,000 Gen (*Only available w/ 30 Amp.*)
- Onan 5,500 Gen (*Required 50amp & 2nd A/C prep*)
- 2nd 13.5K BTU Air Conditioner (*requires 50 amp Service & 2nd A/C Prep*)
- Power Stabilizing Jacks (*N/A with 5.1 Auto Stabilizing System*)
- 12V Heat Pads
- (2) 100-Watt Solar Panels
- 5.1 Auto Stabilizing System (*N/A with Power Stabilizing Jacks*)



### 1 ROOF CONSTRUCTION

- Walkable roof, with 3/8" decking and rafters on 16" centers
- TPO exterior
- Double insulation; fiberglass insulation and Extreme Weather Radiant Foil insulation

### 2 LAMINATED SIDEWALL

- Max Fiberglass Sidewalls by Crane Composites
- Aluminum frame structure
- Multi-layer design including Azdel Composite panel & block foam insulation

### 3 FLOOR CONSTRUCTION

- Tongue & groove plywood flooring
- Insulated upper deck
- Aluminum frame structure
- Double insulated multi-layer design including fiberglass and Extreme Weather Radiant Foil insulation
- Heated and enclosed underbelly
- Heated holding tanks



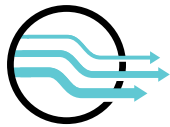
4 FULLY INSULATED PAINTED FIBERGLASS FRONT CAP WITH EXTREME WEATHER RADIANT FOIL INSULATION

5 12" I BEAM FRAME (SELECT MODELS)

6 INSULATED SLAM LATCH BAGGAGE DOORS

7 G RATED TIRES WITH ALUMINUM RIMS (SELECT MODELS)

8 STANDARD REAR LADDER



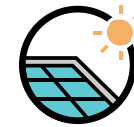
#### TRUE TRAX A/C

Advanced duct work design, D-shape radius edges for reduced drag and turbulence for maximum efficiency, reduced noise, and consistent airflow throughout the trailer.



#### TPO ROOFING

A durable, bacteria-resistant material protects against debris, algae, ultraviolet and chemical exposure. Its flexible membrane allows it to withstand punctures, tears, and impact-related damage.



#### ROOF-MOUNTED SOLAR PREP

Prewired for this quiet alternative to generators, this system offers flexible camping options, and lower emissions while providing uninterrupted power to lights, furnaces, fans, and DC appliances.



#### COLOR-CODED WIRING

Easy-to-trace circuits simplify electrical and other system troubleshooting, reducing service time.



#### AZDEL MATERIALS

A durable, lightweight material protects from moisture and high temperatures to increase RV lifespan by reducing the risk of mold, decay and rot.



**3 Year Limited Structural Warranty:** The Winnebago Towables Limited Structural Warranty covers your RV for a period of three (3) years from the date of purchase by the original owner. This structural warranty covers the workmanship attributable to Winnebago's manufacturing and assembly of the structural portions of your RV. Structural coverage includes:

- Main steel frame
- Steel frame outriggers and cross members
- Skeletal framing (wall studs, floor joists, roof rafters)
- Sidewall assembly
- Roof assembly
- Roof materials installation
- Flooring assembly
- All slideout boxes and applicable structural assembly
- Fiberglass front caps (paint fade cracking)

**1 Year Limited Base Warranty:** In addition to the 3-Year Limited Structural Warranty, the Winnebago Towables Limited Base Warranty covers your RV for a period of one (1) year from the date of purchase by the original owner. This limited warranty covers defects in materials and workmanship supplied by and attributed to Winnebago's manufacturing and assembly of the RV.





## 1 ROOF CONSTRUCTION

- Walkable roof, with 3/8" decking and rafters on 16" centers
- TPO exterior
- Double insulation; fiberglass insulation and Extreme Weather Radiant Foil insulation

## 2 LAMINATED SIDEWALL

- Max Fiberglass Sidewall by Crane Composites
- Aluminum frame structure
- Multi-layer design including Azdel composite panel & block foam insulation

## 3 FLOOR CONSTRUCTION

- Tongue & groove plywood flooring
- Aluminum frame structure
- Double insulated multi-layer design including fiberglass and Extreme Weather Radiant Foil insulation
- Heated and enclosed underbelly
- Heated holding tanks



## 4 FULLY INSULATED FRONT CAP WITH FIBERGLASS AND EXTREME WEATHER RADIANT FOIL INSULATION

## 5 BAL NXG CHASSIS

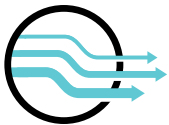
## 6 POWER FRONT TONGUE JACK

## 7 POWER AWNING

## 8 INSULATED SLAM LATCH BAGGAGE DOORS

## 9 NITRO FILL TIRES WITH ALUMINUM RIMS

## 10 STANDARD REAR LADDER (SELECT MODELS)



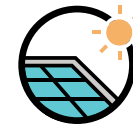
### TRUE TRAX A/C

Advanced duct work design, D-shape radius edges for reduced drag and turbulence for maximum efficiency, reduced noise, and consistent airflow throughout the trailer. (Voyage & Spyder only)



### TPO ROOFING

A durable, bacteria-resistant material protects against debris, algae, ultraviolet and chemical exposure. Its flexible membrane allows it to withstand punctures, tears, and impact-related damage.



### ROOF-MOUNTED SOLAR PREP

Prewired for this quiet alternative to generators, this system offers flexible camping options, and lower emissions while providing uninterrupted power to lights, furnaces, fans, and DC appliances.



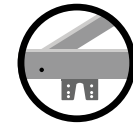
### COLOR-CODED WIRING

Easy-to-trace circuits simplify electrical and other system troubleshooting, reducing service time.



### AZDEL MATERIALS

A durable, lightweight material protects from moisture and high temperatures to increase RV lifespan by reducing the risk of mold, decay and rot.



### ADJUSTABLE FRAME

- Increased axle height allows owners to travel off the beaten path.
- Maintenance points are easier to access when the axles are set in high position.
- The axle can be lowered to provide several extra inches of clearance.

Every Towable is equipped with Winnebago's Comfort Tech and Explorer Packages.



- Laminated, block foam sidewalls
- Extreme Weather Radiant Foil wrapping
- Roof-mount A/C systems
- Insulated heating ducts
- Heated tanks
- Enclosed underbelly



- Roof-mount solar prep
- Larger, off-road tires
- Propane heating system
- Heavy duty axles & suspension
- WiFi prep
- Battery disconnect
- Awning with LED lighting

# SPECIFICATIONS

## SPYDER FIFTH WHEEL



	Exterior Length	Exterior Height (including A/C)	Exterior Width	Interior Height	GVWR (lbs.)	Dry Weight (lbs.)	Dry Hitch Weight (lbs.)	Axles (lbs.)	Tire Size	Fresh Water (Tank only)(gal.)	Black Tank Capacity (gal.)	Gray Tank Capacity (gal.)	LP Capacity (lbs.)	Awning Length	Furnace (BTU)	Water Heater (gal.)	Garage Length
<b>NEW 29SFW</b>	34'10"	13'4"	8'6"	8'6"	16,000	11,420	3,000	2@7,000	ST235/80R-16G	100	50	50	60	20'	30,000	10	14.75'
<b>NEW S36GWS</b>	42'	13'4"	8'6"	8'6"	16,000	13,268	3,590	2 @ 7,000	ST235/80R-16G	100	50	50	60	13'	30,000	10	13'
<b>NEW S37BGS</b>	42'	13'4"	8'6"	TBD	TBD	TBD	TBD	TBD	TBD	TBD	TBD	TBD	60	TBD	30,000	10	12'6"

## SPYDER TRAVEL TRAILER



	Exterior Length	Exterior Height (including A/C)	Exterior Width	Interior Height	GVWR (lbs.)	Dry Weight (lbs.)	Dry Hitch Weight (lbs.)	Axles (lbs.)	Tire Size	Fresh Water (Tank only)(gal.)	Black Tank Capacity (gal.)	Gray Tank Capacity (gal.)	LP Capacity (lbs.)	Awning Length	Furnace (BTU)	Water Heater (gal.)	Garage Length
<b>NEW 23FB</b>	30'4"	12'9"	8'6"	7'10"	11,300	7,300	900	2@5,200	225/75R-15E	100	50	50	60	18'	30,000	10	14'
<b>NEW 29STT</b>	37'0"	12'10"	8'6"	7'10"	12,995	8,460	1,120	2@6,000	235/80R-16E	100	50	50	60	18'	30,000	10	14'5"
<b>NEW S30MAX</b>	37'0"	12'10"	8'6"	7'10"	12,995	9,220	1,620	2@6,000	235/80R-16E	100	50	50	60	20'	30,000	10	15'
<b>NEW S35GT</b>	TBD	12'10"	8'6"	7'10"	12,995	TBD	TBD	2@6,000	235/80R-16E	100	50	50	60	TBD	30,000	10	TBD



# TOWABLES BRAND STORY



## Brand Promise

Winnebago gives you a community to belong to that pushes the boundaries of every adventure.

## The Winnebago Towable Legacy

Towables are in Winnebago's DNA. In fact, Winnebago was founded in 1958, originally as a travel trailer manufacturer. Since then, we have evolved our towables offering to not just meet, but exceed, the demands of our consumers. Inspired by our founder, industry pioneer John K. Hanson, we continue to push what's possible in the towable category through relentless innovation.

## Our Brand Positioning: United and Boundless

We are for the boundless adventurers and travelers who have a drive for experiencing what's next with those who matter to us most. Winnebago provides a community united by pride and a sense of belonging. With our commitment to quality, innovation and consumer trust, we take you further, for longer. So that you can always be bound by the adventure ahead.

## Committed to Dealer Success

When a dealer partners with Winnebago, they experience support that is unmatched by any other. We only allow one dealer per market. This means less competition, greater return on the dealer's investment, and a consistent customer experience. Better point of service, and response time, translates into happy customers. Our owner communities are passionate and unlike any other, and that is directly influenced by their satisfaction and advocacy for our brand.

## You Don't Just Buy Winnebago, You Join Winnebago

### A COMMUNITY UNITED BY BRAND PRIDE

- A community of proud Winnebago owners with support and advice
- Pre-planned and curated community adventures
- WIT Club—A passionate club of boundless adventurers

## Towables Point of Differentiation

### A HISTORY OF INNOVATIVE FIRSTS IN THE CATEGORY

- Innovative floorplans and design for spacious living and storage
- Equipped with industry-leading technology
- Unmistakable interior and exterior style

### RELY ON THE W FOR SUPERIOR SERVICE AND SUPPORT

- Dedicated parts and service teams
- Experienced technical support professionals
- Unparalleled dealer relations

### HIGH QUALITY CONSTRUCTION, BUILT TO GO FURTHER

- Superior, cutting-edge construction
- Thoughtfully designed service access
- Commitment to high-quality materials





Are you a Winnebago towables owner? Join our WIT TOWS owners group & tour the factory! Email [ceby@wgo.net](mailto:ceby@wgo.net) for more information.



Connect with other Spyder owners on the **Winnebago** Facebook page and other social media platforms



**WIT  
CLUB**

[www.witclub.com](http://www.witclub.com)



Have a question  
about the Spyder?

Email [SalesWOI@WGO.net](mailto:SalesWOI@WGO.net).



**Coach-Net**

1-Year Roadside Assistance Included  
with vehicle purchase.

Learn more at  
[www.coach-net.com/winntow](http://www.coach-net.com/winntow).

**WINNEBAGO**  
BOUND BY THE W™

**Winnebago of Indiana**

201 14th Street, P.O. Box 2001  
Middlebury, IN 46540 (574) 825-5250

[www.winnebago.com](http://www.winnebago.com)

Your Winnebago Dealer



Winnebago Industries® continuing program of product improvement makes specifications, equipment, model availability, and prices subject to change without notice. Published content reflects the most current product information at time of printing. 2019 Winnebago of Indiana, LLC 0817v1