

# ***WINDSPORT®***

FUN, THAT COMES STANDARD. YOU JUST  
NEED TO CHOOSE WHERE TO HAVE IT.  
THE WINDSPORT® CAN TAKE YOU TO THOSE  
PLACES YOU'VE ONLY DREAMED  
OF EXPLORING.



**Made to fit.**





## ***WINDSPORT®***

The sounds of laughter, smiles on their face and this trip just started. Yeah, this is going to be an unforgettable summer. This is why we're here. Let the 2020 Windsport® bring a smile to your face.





# EXTERIOR OPTIONS



FRENCH BLUE **FORD-MAX**



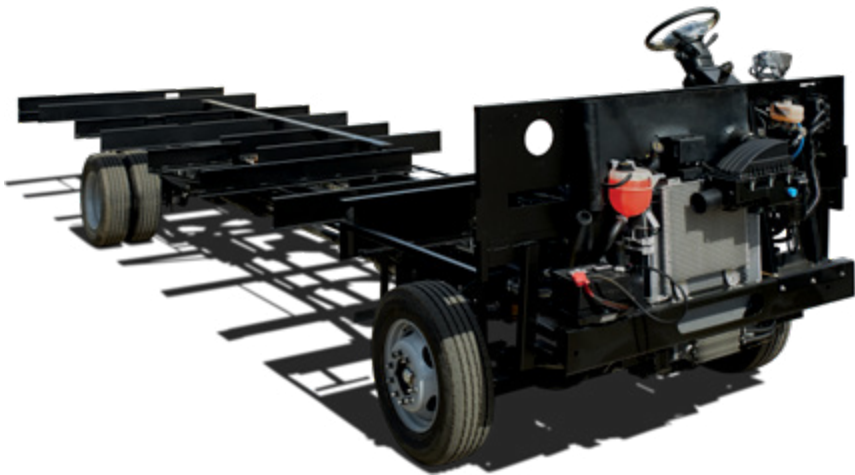
SPANISH GOLD **FORD-MAX**



PARIS NIGHT II PARTIAL-PAINT **FORD-MAX**



SEVILLE II PARTIAL-PAINT **FORD-MAX**



## TRITON® V10 ENGINE

The 6.8L V10 engine has a proven track record of durability and low-hassle maintenance. Extremely smooth running with a commanding 320-horsepower and 460 lb.-ft. of torque.

## POWER 4-WHEEL DISC ANTI-LOCK BRAKES

Maintains brake balance in heavy use and varying road conditions. Reduces wheel lock up and helps maintain superior steering control.

## TORQSHIFT™ 6-SPEED AUTOMATIC TRANSMISSION

Provides crisp, firm and quick shifting without sacrificing driver comfort.

## LIMITED WARRANTY

The Ford® Motorhome Chassis has a Limited Warranty for 3 years or 36,000 miles and a Powertrain Limited Warranty for 5 years or 60,000 miles, whichever comes first.

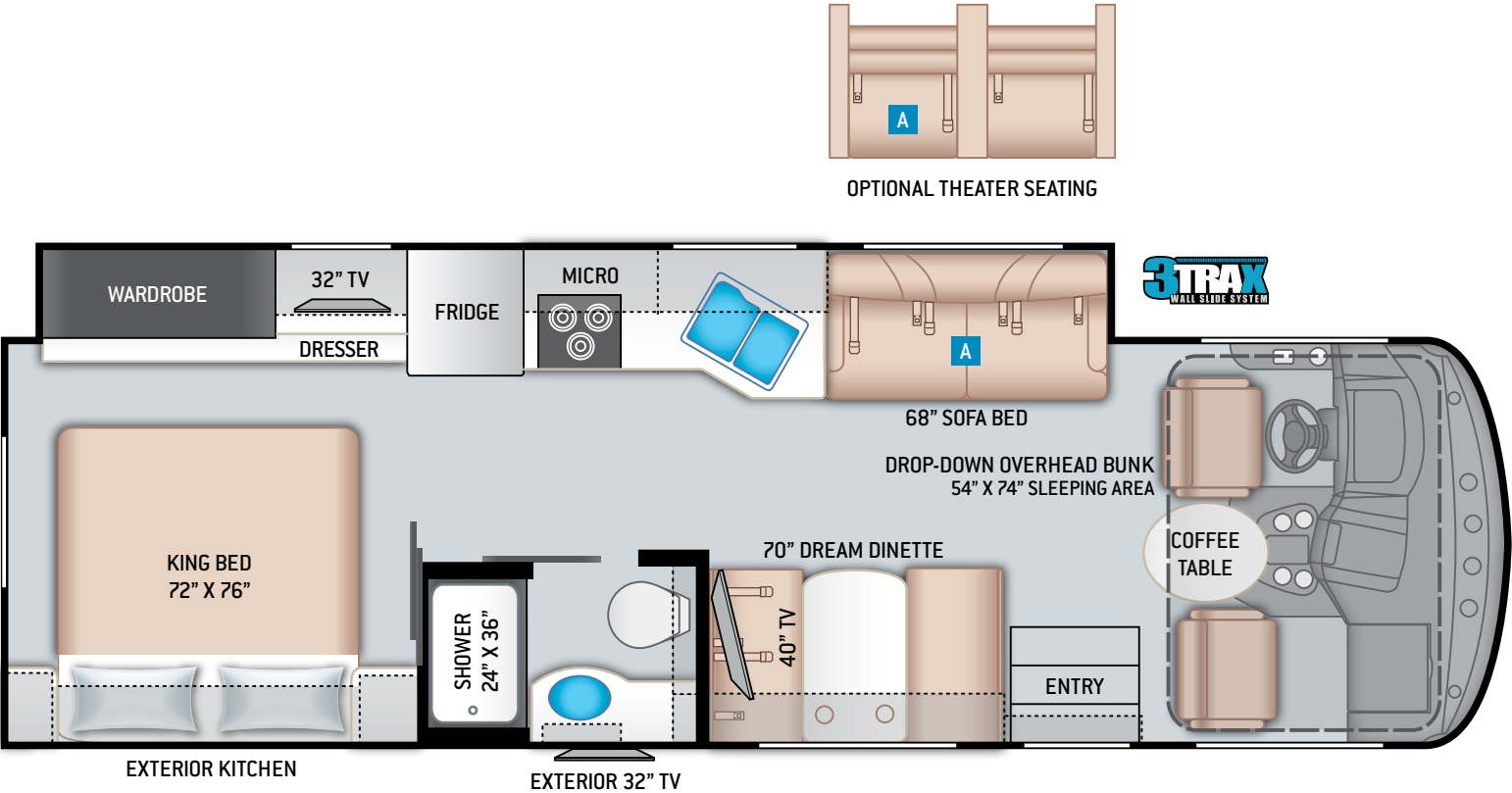








FLOOR PLANS



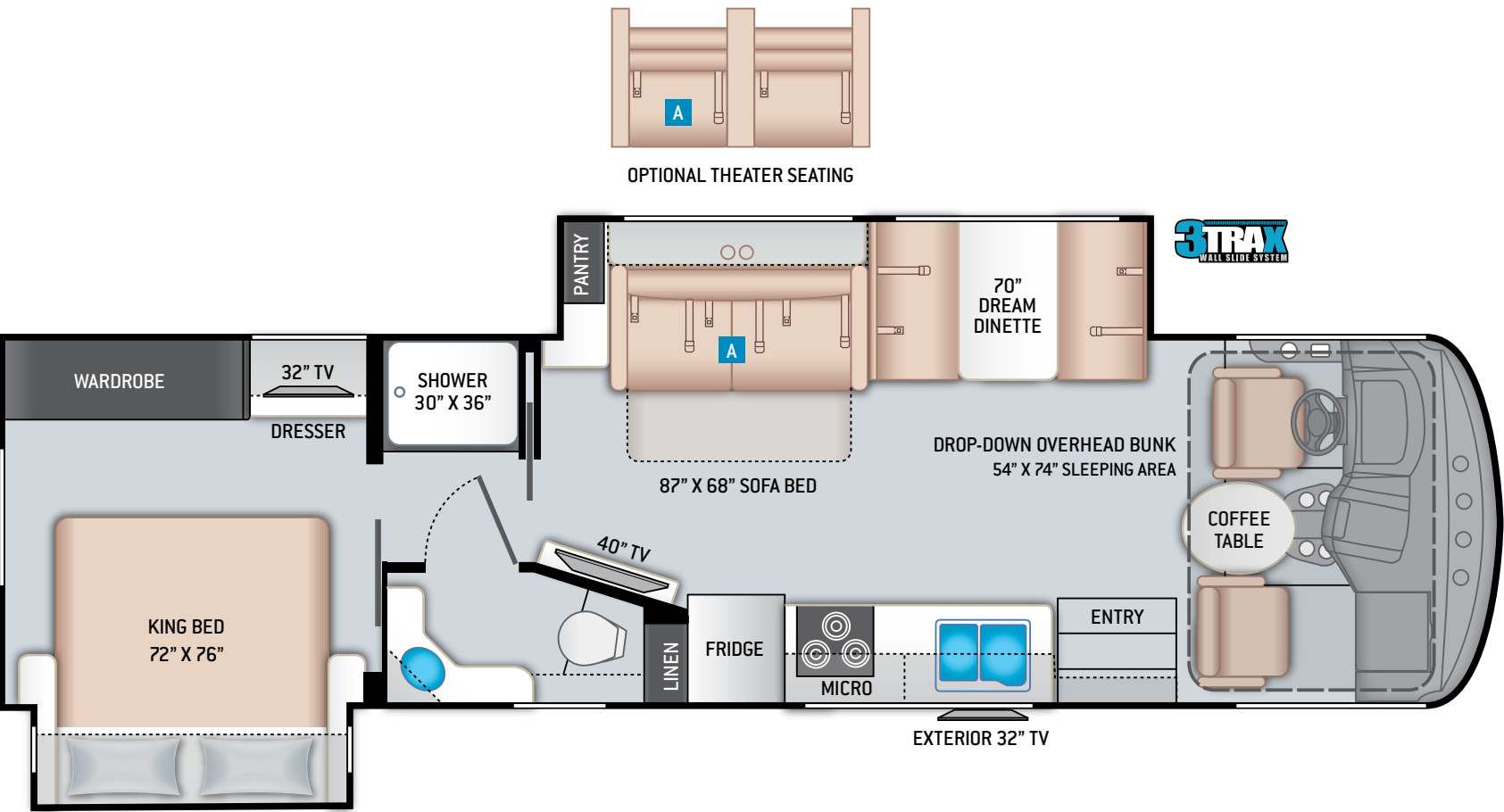
29M

SPECIFICATIONS

29M

CHASSIS	Ford
GROSS VEHICLE (GVWR)	18,000
GROSS COMBINED (GCWR)	23,000
WHEEL BASE	190"
EXTERIOR LENGTH (W/O LADDER)	30'-8"
EXTERIOR HEIGHT (W/AC)	12'-2"
EXTERIOR WIDTH (W/O MIRRORS)	99"
INTERIOR HEIGHT (LIVING AREA)	84"
AWNING SIZE	18'
FUEL (GAL)	80
LPG (LBS)	88
FRESH/WASTE/GRAY WATER (GAL)	50 / 40 / 40
WATER HEATER (GAL)	6
FURNACE (BTUS)	35,000
EXTERIOR STORAGE CAPACITY (CU. FT.)	64
HITCH WEIGHT RATING (LBS)	8,000

FLOOR PLANS



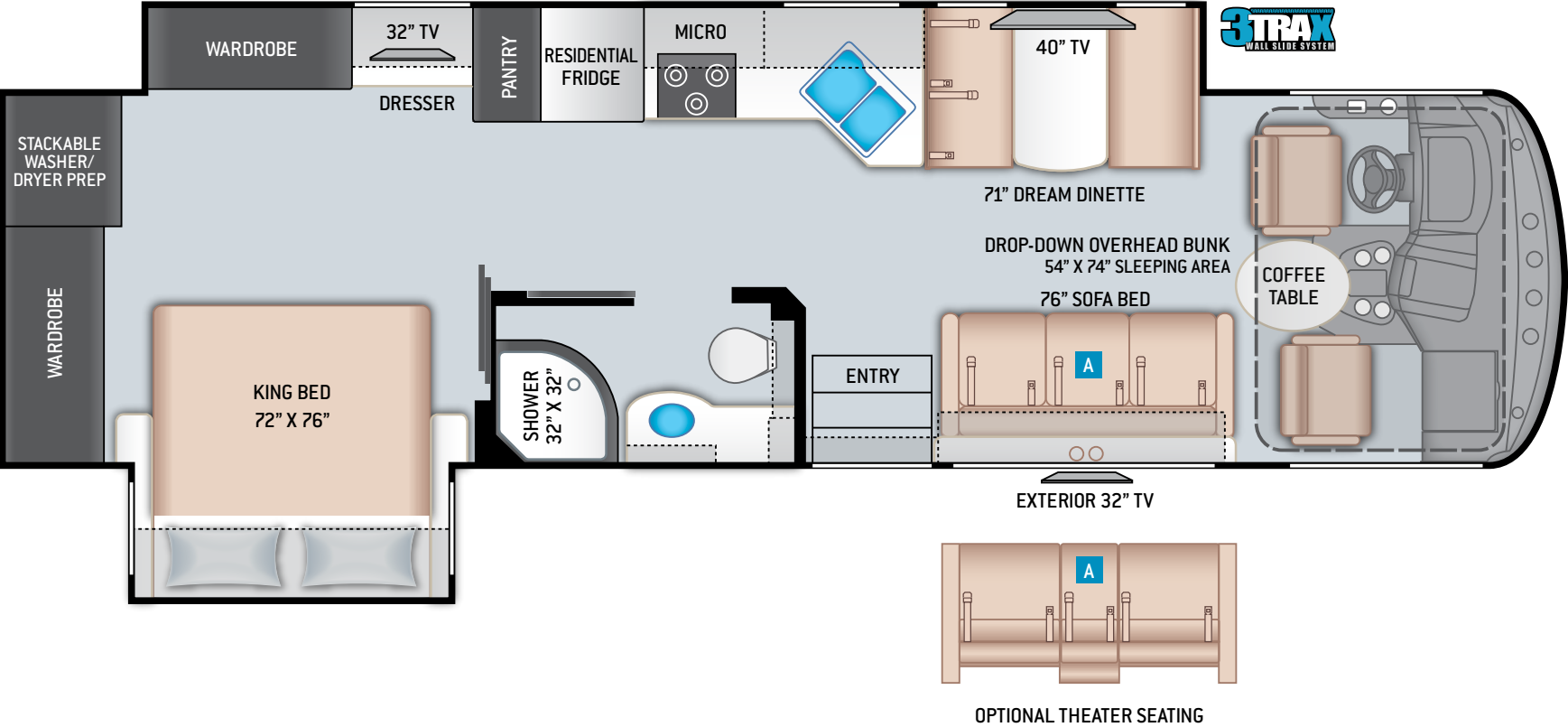
32T

SPECIFICATIONS

32T

CHASSIS	Ford
GROSS VEHICLE (GVWR)	20,500
GROSS COMBINED (GCWR)	26,000
WHEEL BASE	228"
EXTERIOR LENGTH (W/O LADDER)	33'-11"
EXTERIOR HEIGHT (W/AC)	12'-2"
EXTERIOR WIDTH (W/O MIRRORS)	99"
INTERIOR HEIGHT (LIVING AREA)	84"
AWNING SIZE	18'
FUEL (GAL)	80
LPG (LBS)	88
FRESH/WASTE/GRAY WATER (GAL)	50 / 40 / 40
WATER HEATER (GAL)	6
FURNACE (BTUS)	35,000
EXTERIOR STORAGE CAPACITY (CU. FT.)	111
HITCH WEIGHT RATING (LBS)	8,000

FLOOR PLANS



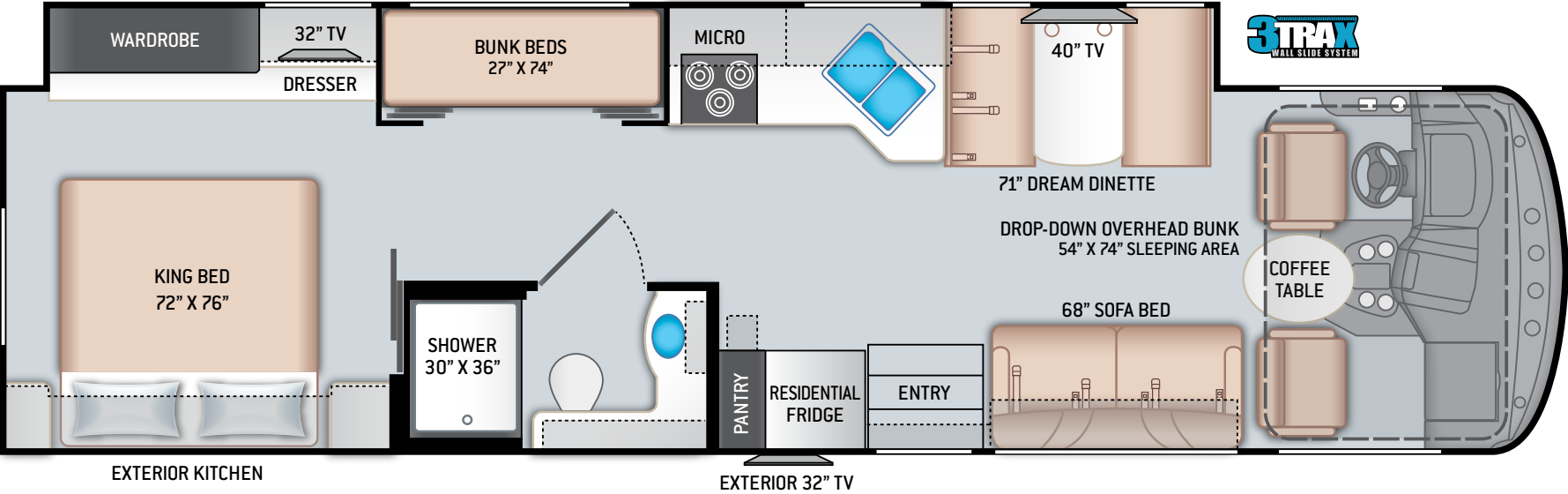
33X

SPECIFICATIONS

33X

CHASSIS	Ford
GROSS VEHICLE (GVWR)	20,500
GROSS COMBINED (GCWR)	26,000
WHEEL BASE	228"
EXTERIOR LENGTH (W/O LADDER)	34'-8"
EXTERIOR HEIGHT (W/AC)	12'-2"
EXTERIOR WIDTH (W/O MIRRORS)	99"
INTERIOR HEIGHT (LIVING AREA)	84"
AWNING SIZE	18'
FUEL (GAL)	80
LPG (LBS)	88
FRESH/WASTE/GRAY WATER (GAL)	50 / 40 / 47
WATER HEATER (GAL)	6
FURNACE (BTUS)	35,000
EXTERIOR STORAGE CAPACITY (CU. FT.)	103
HITCH WEIGHT RATING (LBS)	8,000

FLOOR PLANS



34J

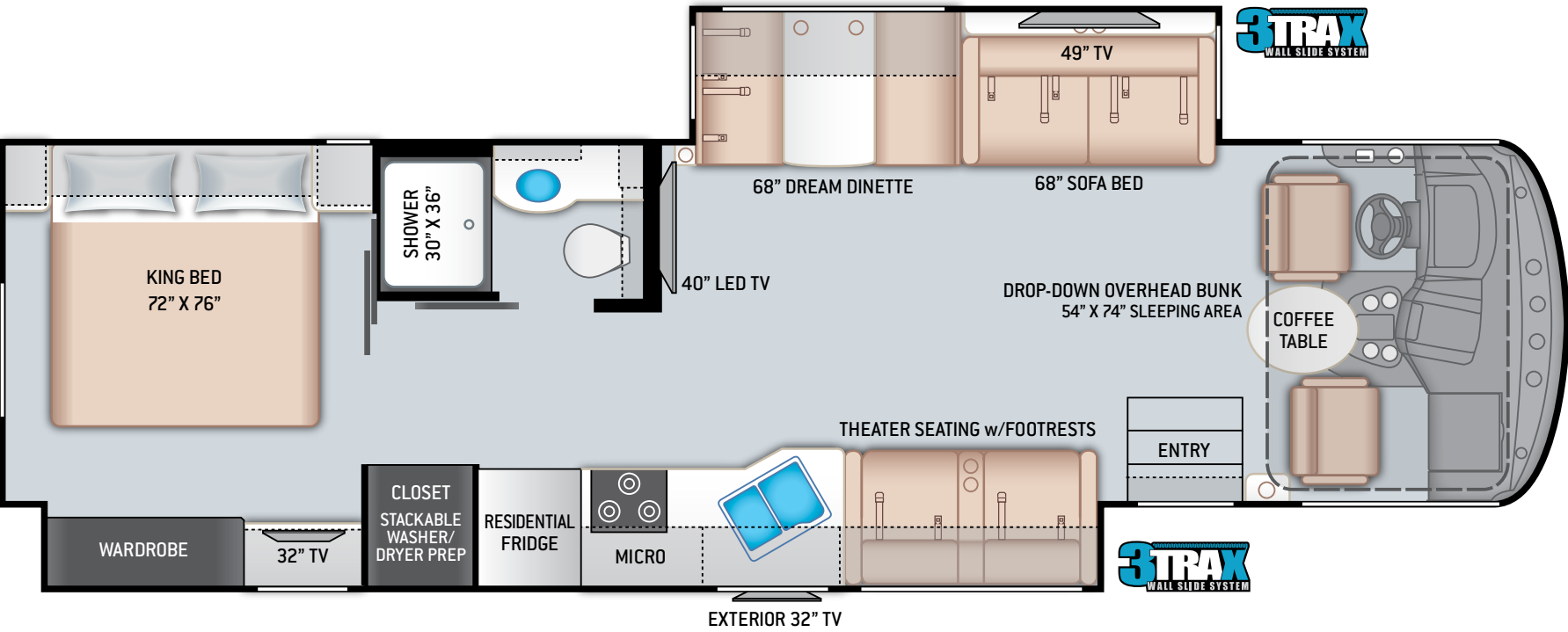
SPECIFICATIONS

34J

CHASSIS	Ford
GROSS VEHICLE (GVWR)	22,000
GROSS COMBINED (GCWR)	26,000
WHEEL BASE	242"
EXTERIOR LENGTH (W/O LADDER)	35'-7"
EXTERIOR HEIGHT (W/AC)	12'-2"
EXTERIOR WIDTH (W/O MIRRORS)	99"
INTERIOR HEIGHT (LIVING AREA)	84"
AWNING SIZE	18'
FUEL (GAL)	80
LPG (LBS)	88
FRESH/WASTE/GRAY WATER (GAL)	50 / 40 / 40
WATER HEATER (GAL)	6
FURNACE (BTUS)	35,000
EXTERIOR STORAGE CAPACITY (CU. FT.)	104
HITCH WEIGHT RATING (LBS)	8,000



FLOOR PLANS



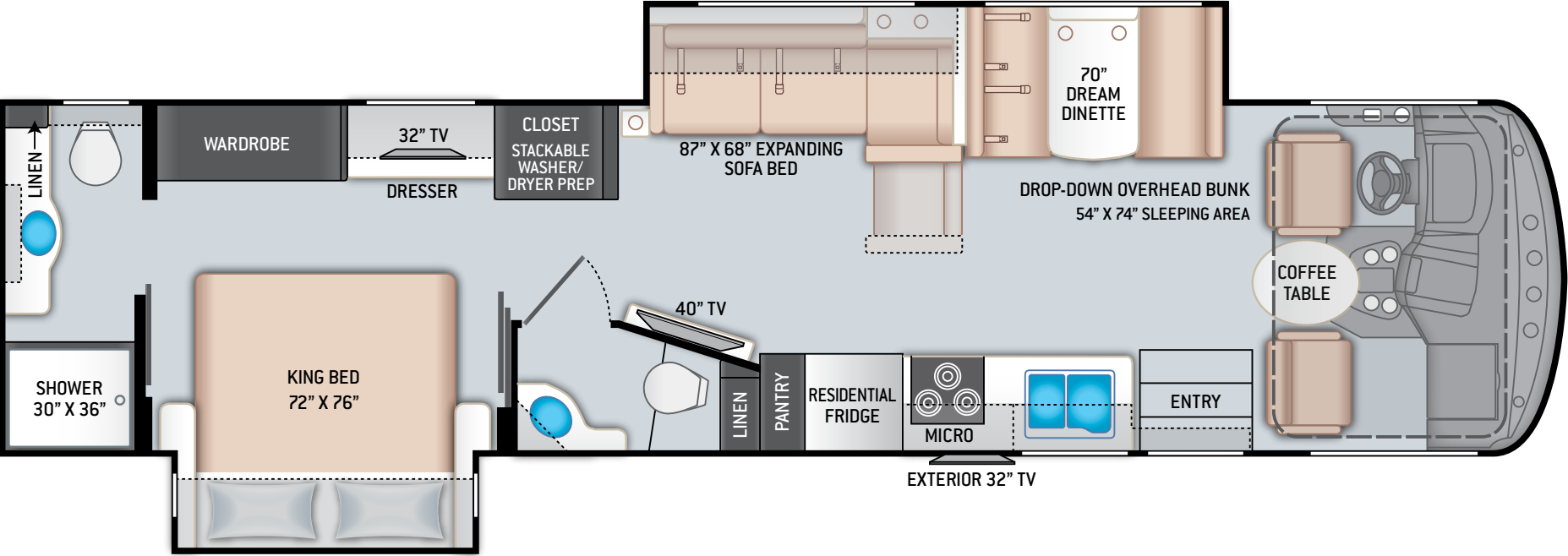
34R

SPECIFICATIONS

34R

CHASSIS	Ford
GROSS VEHICLE (GVWR)	22,000
GROSS COMBINED (GCWR)	26,000
WHEEL BASE	242"
EXTERIOR LENGTH (W/O LADDER)	36'
EXTERIOR HEIGHT (W/AC)	12'-2"
EXTERIOR WIDTH (W/O MIRRORS)	99"
INTERIOR HEIGHT (LIVING AREA)	84"
AWNING SIZE	18'
FUEL (GAL)	80
LPG (LBS)	88
FRESH/WASTE/GRAY WATER (GAL)	50 / 40 / 40
WATER HEATER (GAL)	6
FURNACE (BTUS)	35,000
EXTERIOR STORAGE CAPACITY (CU. FT.)	109
HITCH WEIGHT RATING (LBS)	8,000

FLOOR PLANS



35M

SPECIFICATIONS

35M

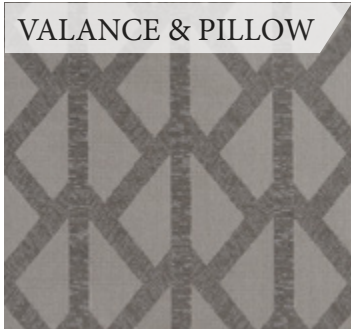
CHASSIS	Ford
GROSS VEHICLE (GVWR)	22,000
GROSS COMBINED (GCWR)	26,000
WHEEL BASE	242"
EXTERIOR LENGTH (W/O LADDER)	36'-9"
EXTERIOR HEIGHT (W/AC)	12'-2"
EXTERIOR WIDTH (W/O MIRRORS)	99"
INTERIOR HEIGHT (LIVING AREA)	84"
AWNING SIZE	18'
FUEL (GAL)	80
LPG (LBS)	88
FRESH/WASTE/GRAY WATER (GAL)	50 / 40F-39R / 40F-39R
WATER HEATER (GAL)	6
FURNACE (BTUS)	35,000
EXTERIOR STORAGE CAPACITY (CU. FT.)	112
HITCH WEIGHT RATING (LBS)	8,000



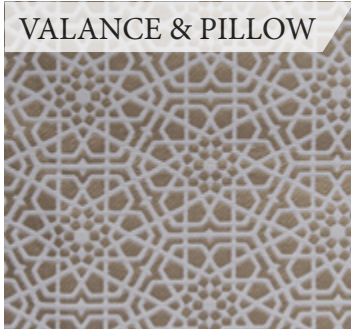
# I N T E R I O R   O P T I O N S



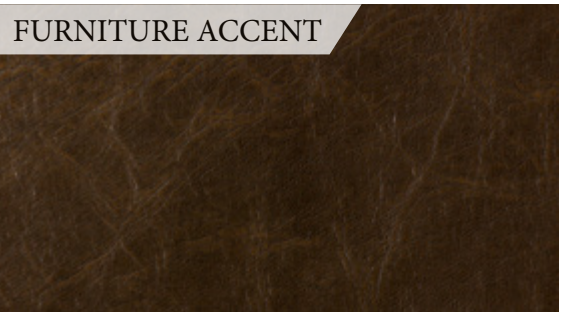
ETCHED NICKEL



MYSTIC MOON



WINTER WHITE









# SPECIAL FEATURES



Winegard® ConnecT™ 2.0 4G LTE Router and WiFi Extender



10" Touchscreen AM/FM Dash Radio with Navigation, Back-up Monitor and Bluetooth®



Multiplex Wiring Control System with 7" Touchscreen



Solar Prep - Includes Solar Controller



Exterior TV on Manual Swivel with Sound Bar



Pet-Link™ Multi-Purpose Tie-Down



Power Drop-Down Hide-Away Overhead Bunk with Cotton Cloud™ Mattress and Bunk Ladder



SiriusXM® Radio





# FEATURED HIGHLIGHTS

## CONSTRUCTION & EXTERIOR

- ♦ Ford® F-53 Chassis – 6.8L Triton® V10 Engine, 320HP, 460 lb.-ft. Torque – TorqShift® 6-Speed Automatic with Overdrive Transmission
- ♦ One-Piece Fiberglass Front & Rear Caps
- ♦ One-Piece Windshield
- ♦ HD-MAX® Exterior with Graphics Package
- ♦ Rotocast Storage Compartments
- ♦ Side-Hinged Flush Mount Radius Compartment Doors
- ♦ Premium One-Piece TPO Roof
- ♦ Automatic Leveling Jacks with Touchpad Controls
- ♦ Legless Lateral Power Patio Awning with Integrated LED Lighting
- ♦ Power Entry Door Awning (32T, 33X & 34R)
- ♦ 3TRAX® Wall Slide System (29M, 32T, 33X, 34J & 34R)
- ♦ Slideout Room Topper Awning(s)
- ♦ Pet-Link™ Multi-Purpose Tie-Down
- ♦ Electric Entry Step
- ♦ Roof Ladder
- ♦ Frameless Windows
- ♦ 8,000-lb. Trailer Hitch with 7-pin Round Connector

## CONSTRUCTION & EXTERIOR OPTIONS

- ♦ Partial Paint on HD-MAX® Exterior with Graphics Package
- ♦ Frameless Dual Pane Windows

## AUTOMOTIVE & COCKPIT

- ♦ 10" Touchscreen Dash Radio with Bluetooth®, iGo Primo™ Navigation & SiriusXM® Radio
- ♦ Back-Up Monitor
- ♦ Heated/Remote Exterior Mirrors with Integrated Side View Cameras
- ♦ Reclining/Swivel Leatherette Captain's Chairs with Stow-Away Coffee Table
- ♦ Power Driver's Seat
- ♦ Emergency Engine Start Switch
- ♦ Generator Start Switch
- ♦ Tilt Steering Wheel
- ♦ Cruise Control
- ♦ Dash Fans
- ♦ Map Lights
- ♦ Fog Lights
- ♦ Conversation Mirrors in Front Overhead Cabinets
- ♦ Bird's Eye™ View Window
- ♦ Power Privacy Shade & Sunvisor at Windshield
- ♦ Privacy Curtain on Side Windows
- ♦ Dash Workstation with 110-volt & 12-volt Outlets
- ♦ 19.5" Tires with Stainless Steel Wheel Liners
- ♦ Valve Stem Extenders on Rear Wheels
- ♦ Power Drop-Down Hide-Away Overhead Bunk with Cotton Cloud™ Mattress & Bunk Ladder
- ♦ Electric Fireplace with Remote Control

## INTERIOR

- ♦ Rubber Tread Entry Steps with Lighted Step Well
- ♦ Residential Vinyl Flooring
- ♦ 84" Interior Ceiling Height
- ♦ LED Lighting
- ♦ Ceiling Ducted Air Conditioning System
- ♦ Raised Panel Upper Cabinet Doors with Nickel Finish Hardware & Glass Inserts on Select Doors
- ♦ Dream Dinette® Booth with Cup Holders
- ♦ Dinette Storage Drawer (N/A 29M)
- ♦ Leatherette Sofa Bed (N/A 35M)
- ♦ Leatherette Expanding Sofa Bed (35M)
- ♦ Leatherette Theater Seats with Integrated Footrests (34R)
- ♦ Window Privacy Shades
- ♦ Electric Fireplace with Remote Control (32T)

## INTERIOR OPTIONS

- ♦ Single Child Safety Tether in Dinette
- ♦ Leatherette Theater Seats with Integrated Footrests (29M, 32T & 33X)

## KITCHEN

- ♦ Double Door Refrigerator (32T & 29M)
- ♦ 11 cu. ft. Residential Refrigerator with Ice Maker (33X, 34J, 34R & 35M)
- ♦ 3-Burner Gas Cooktop/Oven with Bi-Fold Glass Cover

- ♦ 30" Over-the-Range Microwave Oven
- ♦ Decorative Glass & Tile Backsplash
- ♦ Solid Surface Countertops & Pressed Laminate Dinette Countertop
- ♦ Large Double Stainless Steel Bowl Sink with Single Handle Faucet & Pull-Down Sprayer
- ♦ Pantry (32T, 33X, 34J & 35M)
- ♦ 12-volt Attic Fan with Cover
- ♦ Exterior Kitchen with Refrigerator & Sink (29M & 34J)

## BEDROOM & BATHROOM

- ♦ King Size Bed
- ♦ Designer Headboard, Bedspread & Pillow Shams
- ♦ Bunk Beds in Hallway Slideout (34J)
- ♦ Foot Flush Porcelain Toilet
- ♦ Shower with Glass Door
- ♦ 110-volt Outlet on Inverter for CPAP Machine

## BEDROOM & BATHROOM OPTIONS

- ♦ 12-volt Attic Fan with Cover in Bedroom (29M – N/A when Dual 13,500 BTU Roof Air Conditioners is Optioned)

## ENTERTAINMENT

- ♦ 49" TV in Living Area (34R)
- ♦ 40" TV in Living Area

- ♦ 32" TV in Bedroom
- ♦ Blu-Ray Player in Living Area
- ♦ 15.5" & 24" TVs & DVD Player in Bunk Bed Area (34J)
- ♦ Exterior 32" TV on Manual Swivel with Bluetooth® Soundbar
- ♦ USB Charging Ports - Bedroom & Living Area
- ♦ Speakers in Sofa Overhead
- ♦ HDMI Video Distribution
- ♦ Cable TV Ready
- ♦ Digital TV Antenna
- ♦ Winegard® Connect™ 2.0 WiFi / 4G / TV Antenna

## ELECTRICAL & PLUMBING

- ♦ Onan® RV QG 4000 Gas Generator & 30-amp Detachable Shoreline Power Cord with 15,000 BTU Front Roof Air Conditioner (29M)
- ♦ Onan® RV QG 5500 Gas Generator & 50-amp Detachable Shoreline Power Cord, with Dual 13,500 BTU Roof Air Conditioners (32T, 33X, 34J, 34R & 35M)
- ♦ Solar Prep - Includes Solar Controller
- ♦ Exterior LP Connection
- ♦ Second Auxiliary House Battery
- ♦ Battery Tray that Holds up to (4) Four Batteries (32T, 33X, 34J, 34R & 35M)

- ♦ 1000-watt Inverter (29M & 32T)
- ♦ 1800-watt Inverter (33X, 34J, 34R & 35M)
- ♦ Automatic Generator Start
- ♦ Battery Disconnect Switch
- ♦ Rapid Camp+® Multiplex Wiring Control System with 7" Touchscreen
- ♦ 6-gallon DSI Gas/Electric Water Heater
- ♦ Water Heater Bypass System
- ♦ Enclosed & Heated Holding Tanks (32T, 34J, 34R & 35M )
- ♦ Enclosed Holding Tanks with Heat Pads (29M & 33X)
- ♦ 360° Siphon® RV Holding Tank Vent Cap
- ♦ Black Tank Flush System
- ♦ 1" Fresh Water Tank Drain
- ♦ Stackable Washer/Dryer Prep (33X, 34R & 35M)
- ♦ Outside Shower
- ♦ Systems Control Center

## ELECTRICAL & PLUMBING OPTIONS

- ♦ Onan® RV QG 5500 Gas Generator & 50-amp Detachable Shoreline Power Cord, with Dual 13,500 BTU Roof Air Conditioners (29M)

For a complete listing of available features, visit [thormotorcoach.com/windsport](http://thormotorcoach.com/windsport).







**Made to fit.**

**IMPORTANT—PLEASE READ:** This brochure reflects product design, fabrication, material, components and specifications at the date of printing, which date is disclosed below. Please visit us online at [ThorMotorCoach.com](http://ThorMotorCoach.com) or consult with your selling dealership for the latest in standards, options, specification and technical information. Photographs in the brochure may depict optional equipment or may only be available in certain floor plans. Components, appliances and the chassis may have been manufactured in a calendar year before the vehicle's designated model year. All capacities are approximate. The actual length of the vehicle may differ from that indicated in the brochure due to variances in the manufacturing processes and/or installed components. All dry weights are based on standard model features and do not include optional features or equipment. Component part and appliance manufacturers issue limited warranties covering portions of the vehicle not covered under the limited warranty we issue. Copyright Thor Motor Coach, Inc. © OH 10/01/19



[thormotorcoach.com/windsport](http://thormotorcoach.com/windsport)  
P.O. Box 1486, Elkhart, IN 46515 Sales Department: 800.860.5658 Customer Service: 877.855.2867