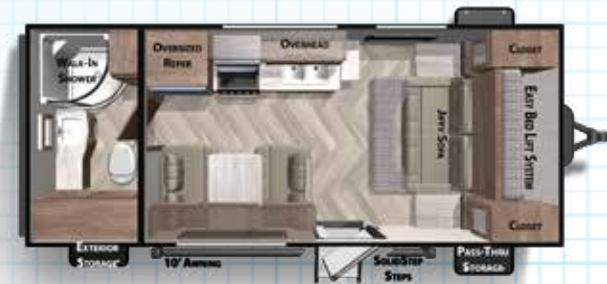


SALEM CRUISE LITE



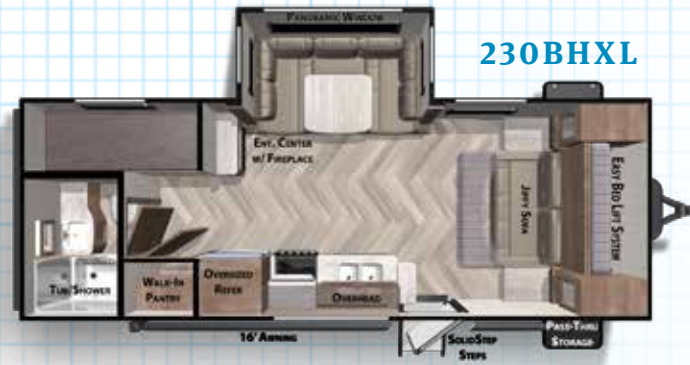
171RBXL



19DBXL



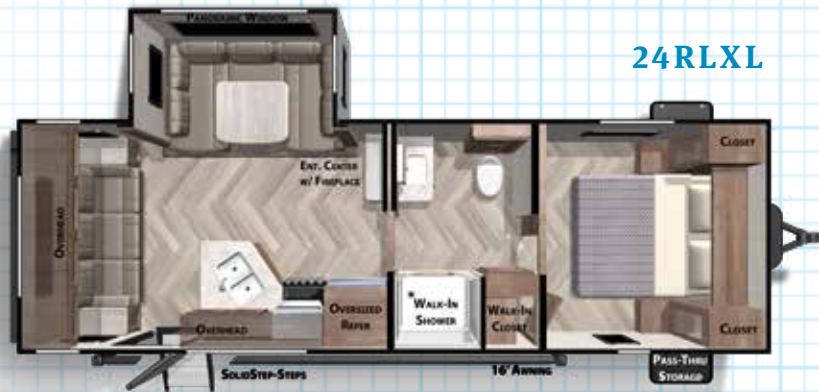
230BHXL



240BHXL



24RLXL



241QBXL



261BHXL



263BHXL



273QBXL



282QBXL



**BEST IN CLASS PACKAGE**

- » SolidStep Double Step (Main Door Only)
- » Exterior LED Light Strip Under Awning
- » Modern Cloth Roller Shades w/ AutoStop
- » Green Pkg: Furion Solar Prep & LED Mushroom Lights
- » Power Awning w/Adjustable Legs
- » True Stabilizer Jacks w/ JT StrongArms
- » Power Tongue Jack w/LED Light
- » Stainless Steel Roll Up Sink Cover
- » Ext. Convenience Pkg: Friction Hinge & Baggage Door Magnets
- » Furion Backup Camera Prep
- » Large Capacity 10.7 cu ft Stainless Steel Refrigerator (12-volt)
- » Slide-Out Awning Prep
- » WiFi Prep
- » Black Tank Flush
- » Seamless Countertops (No T-Mold)
- » Designated CPAP Storage
- » 10.4 cu ft of Stow N Go Storage (Bed & Dinette)



263BHXL

	171RBXL	19DBXL	230BHXL	240BHXL	24RLXL	241QBXL	261BHXL	263BHXL	273QBXL	282QBXL
HITCH WEIGHT:	521 lb.	520 lb.	694 lb.	570 lb.	550 lb.	499 lb.	499 lb.	736 lb.	752 lb.	768 lb.
UVW:	3836 lb.	4418 lb.	4941 lb.	5343 lb.	5063 lb.	4173 lb.	4569 lb.	5885 lb.	6041 lb.	6055 lb.
CCC:	3685 lb.	3102 lb.	2753 lb.	2227 lb.	2487 lb.	3326 lb.	2910 lb.	1851 lb.	2511 lb.	2513 lb.
EXTERIOR LENGTH:	22' 5"	24' 8"	25' 10"	28' 6"	28' 9"	26' 11"	29' 1"	31' 5"	33' 3"	32' 11"
EXTERIOR HEIGHT:	10' 1"	10' 1"	10' 4"	10' 4"	10' 4"	10' 1"	10' 1"	10' 4"	10' 4"	10' 4"
EXTERIOR WIDTH:	96"	96"	96"	96"	96"	96"	96"	96"	96"	96"
FRESH WATER:	38 gal.	40 gal.	38 gal.	40 gal.	40 gal.	38 gal.	38 gal.	38 gal.	38 gal.	38 gal.
GRAY WATER:	30 gal.	28 gal.	30 gal.	64 gal.	40 gal.	40 gal.	30 gal.	60 gal.	60 gal.	30 gal.
BLACK WATER:	30 gal.	30 gal.	30 gal.	32 gal.	30 gal.	30 gal.	30 gal.	30 gal.	30 gal.	30 gal.
AWNING SIZE:	10'	12'	16'	18'	16'	14'	12'	16'	16'	16'

For more info, pictures & 360 Tours, visit [www.forestriverinc.com/Salem](http://www.forestriverinc.com/Salem)

# SALEM PRODUCT FAMILY



FSX

CRUISE LITE

SALEM

CLASSIC / ESTATE / GRAND VILLA

HEMISPHERE



## 24/7 EMERGENCY ROADSIDE ASSISTANCE WITH VEHICLE PURCHASE\*

TOWING  
JUMP-STARTS  
TIRE CHANGES  
FLUID DELIVERY  
LOCKOUT  
SERVICE

WINCH-OUT  
MOBILE MECHANIC  
TECHNICAL  
SUPPORT  
DEALER LOCATOR  
SERVICES



\*VALID FOR 1 YEAR FROM DATE OF PURCHASE

## FREE MEMBERSHIP to Forest River Owners' Group

[www.forestriverfrog.com](http://www.forestriverfrog.com)



**Learn More**  
Scan this barcode using  
a QR Reader on your  
smart phone to learn  
more about Forest River.



A Berkshire Hathaway company.

### Specification Definitions

**GVWR (Gross Vehicle Weight Rating)** - is the maximum permissible weight of the unit when fully loaded. It includes all weights, inclusive of all fluids, cargo, optional equipment and accessories. For safety and product performance do NOT exceed the GVWR.

**GAWR (Gross Axle Weight Rating)** - is the maximum permissible weight, including cargo, fluids, optional equipment and accessories that can be safely supported by a combination of all axles.

**UVW (Unloaded Vehicle Weight)\*** - is the typical weight of the unit as manufactured at the factory. It includes all weight at the unit's axle(s) and tongue or pin and LP Gas. The UVW does not include cargo, fresh potable water, additional optional equipment or dealer installed accessories.

\*Estimated average based on standard build optional equipment.

**CCC (Cargo Carrying Capacity)\*\*** - is the amount of weight available for fresh potable water, cargo, additional optional equipment and accessories. CCC is equal to GVWR minus UVW. Available CCC should accommodate fresh potable water (8.3 lbs per gallon). Before filling the fresh water tank, empty the black and gray tanks to provide for more cargo capacity.

\*\* Estimated average based on standard build optional equipment

Each Forest River RV is weighed at the manufacturing facility prior to shipping. A label identifying the unloaded vehicle weight of the actual unit and the cargo carrying capacity is applied to every Forest River RV prior to leaving our facilities.

The load capacity of your unit is designated by weight, not by volume, so you cannot necessarily use all available space when loading your unit.

All information contained in this brochure is believed to be accurate at the time of publication. However, during the model year, it may be necessary to make revisions and Forest River, Inc., reserves the right to make all such changes without notice, including prices, colors, materials, equipment and specifications as well as the addition of new models and the discontinuance of models shown in this brochure. Therefore, please consult with your Forest River dealer and confirm the existence of any materials, design or specifications that are material to your purchase decision. Litho. U.S.A. FOR 1609 P/W: 2019.01.22

### MEET YOUR CRUISE LITE DEALER

### CUSTOMER SATISFACTION



[www.ForestRiverBuyLocal.com](http://www.ForestRiverBuyLocal.com)



### PRE-DELIVERY INSPECTION FACILITY

20,000 square feet of quality assurance. The bare essentials for a premium product. This state-of-the-art facility gives immediate daily feedback to production for quality assurance in every unit built.