

CONNECT SE & CONNECT

LIGHTWEIGHT TRAVEL TRAILERS



RECREATIONAL  
VEHICLES

# CONNECT®



**CONNECT SE & CONNECT**  
LIGHTWEIGHT TRAVEL TRAILERS

# GETTING INTO THE ACTION JUST GOT EASIER!

The all-new **CONNECT SE** is available in several diverse floorplans. Slideouts make SE feel spacious and welcoming.

Modeled after Connect but lighter and lower-priced, the **SE** is nicely outfitted, including:

- Drop-in cooktop w/oven & glass cover
- Handcrafted solid maple cabinetry
- Mortise & tenon cabinet doors
- Multi-media sound bar stereo w/ Bluetooth, HDMI & USB charge
- Lamilux exterior fiberglass w/ UVA & UVB resistant gelcoat
- Aerodynamic front profile
- Tufflex Roof w/15-Year Warranty



**KITCHEN** features:

- gas cooktop with glass cover and built-in oven
- stainless steel microwave
- double-door 10-CU-FT refrigerator
- spacious pantry

C241BHKSE | Coffee décor



The bunkhouse slideout with second dinette gives **KIDS ROOM TO PLAY.** Sleep three comfortably, with third bunk atop the closet cabinet. (C312BHKSE shown)



**EXTRA-LARGE DINETTE** accommodates the whole family, with additional storage space under the dinette seats. (C241BHKSE shown)



**ROLLER BALL BEARING DRAWER GLIDES** make bulky storage a breeze (where applicable). (C231BHKSE shown)



Handcrafted solid wood glazed maple cabinetry, and residential-style furniture add **CHARM AND COMFORT.** Storage is well placed, as is the convenient 12V outlet with dual USB port.



**SEAMLESS COUNTERTOPS** with a deep under-mount stainless steel kitchen sink and stainless steel high-rise faucet. (C241BHKSE shown)



**CONVENIENCE CENTER** offers all interior control switches in one centralized location for ease of setup and use.



**BEDROOM** features:

- High-thread-count quilted and reversible comforter
- LED lighting
- Pleated nightshades
- His-and-hers full-length closets on both sides of the bed (C241BHKSE shown)

**STANDARDS**

- 3/8" Fully Walk-On Roof Decking
- 1-Piece, Seamless, Walk-on, Tufflex Roofing Material w/15-Year Warranty
- UVA & UVB Resistant Gelcoat Lamilux® Exterior F/G
- Protective Front Diamond Plate
- KZ Easy-Catch Baggage Door Systems
- LED Exterior Lighting
- (4) Stabilizer Jacks
- (2) 20# LP Bottles w/Bottle Cover
- Satellite & Cable Hookups
- 30 AMP Service
- 13,500 BTU A/C
- Water Heater Bypass
- 3-Burner Range w/Oven
- High-Rise Faucet
- Rich Woodbridge Maple Cabinetry
- Hand-Crafted Mortise & Tenon Cabinet Doors
- Roller Ball Bearing Drawer Glides
- Linoleum Throughout
- LED Interior Lighting
- Nightshades
- Shower Surround
- Skylight over Tub
- Roof Vent in Bath
- High Thread Count Quilted Reversible Queen Bedsread

**OPTIONS**

- 15,000 BTU A/C IPO 13,500 BTU A/C
- Low Pro 13,500 A/C IPO 13,500 (C271RL & smaller)
- Low Pro 15,000 A/C IPO 13,500 (C271RL & smaller)
- 8 CU FT Gas/Electric Refrigerator IPO 10 CU FT 12V Refrigerator
- 50 AMP Service for 2nd A/C
- 2nd A/C (13,500BTU)
- Ottoman w/Storage
- Tri-Fold HAB Sofa IPO Jackknife (N/A C221RB, C231BHK, C241BHK)

- Trundle Bed IPO Dinette in Bunk Slide (C312BHKSE)
- Bedroom Pillow Package

**KZ ADVANTAGE PACKAGE**  
(MANDATORY OPTION)**EXTERIOR**

- Color Infused Titanium Exterior Fiberglass
- Flip-Up Entry Step (main entry)
- Friction-Hinged Entry Door w/ Shade Prep & Screenshot Features
- Power Front Jack
- Key Alike Program for Baggage & Entry Doors
- Magnetic Catches for Baggage Doors
- Folding Grab Handle
- Exterior Speakers
- Spare Tire & Carrier
- Amber Light Step
- Solar Prep
- Backup Camera Prep
- Nitrogen Filled Tires
- Battery Disconnect Switch
- Climate Package (heated, insulated & enclosed underbelly)
- Black Tank Flush
- Outside Shower
- Outside Kitchen (select models)
- Leash Latch w/Bonus Beverage Opener

**INTERIOR**

- Jackknife w/Middle Console
- Drop-In Cooktop w/Glass Cover & Oven
- (2) 12V USB Ports in Bedroom
- Seamless Countertops w/Deep Undermount Stainless Steel Kitchen Sink
- Sink Cover
- Plywood Bed Base w/Gas Struts
- 12V USB in Bunk Area
- (2) 6.5" Interior Speakers

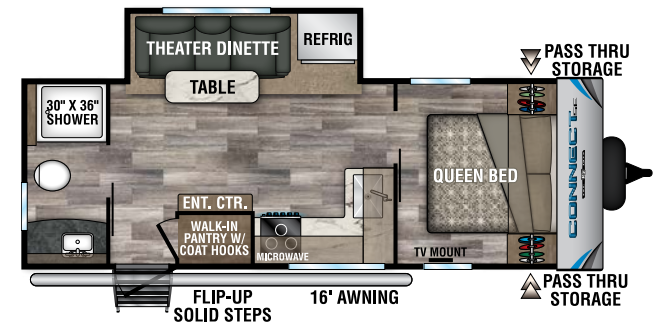
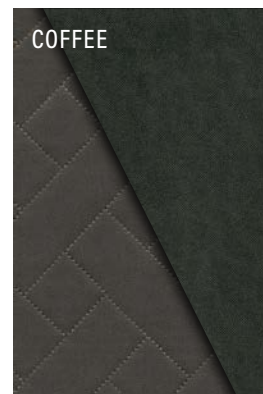
- Multimedia Sound Bar Stereo w/ Bluetooth, HDMI & USB Charge
- Foot Flush Toilet
- Cabinet Doors at Booth Dinette
- Pleated Shades
- Wider Pocket/Passage Interior Doors
- Color Accented Shower Walls
- Bathroom Shelf w/Towel Hooks

**KZ CONVENIENCE PACKAGE**  
(MANDATORY OPTION)**EXTERIOR**

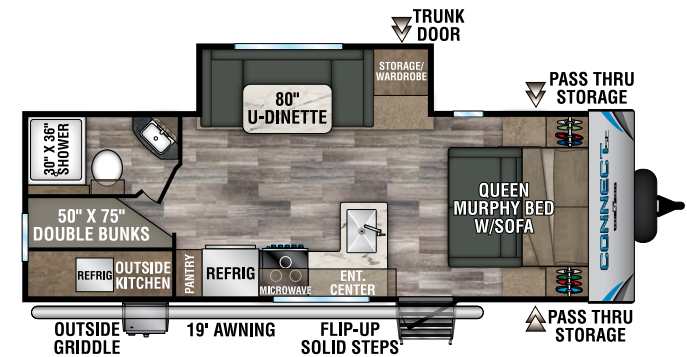
- Aluminum Wheels
- Power Awning w/LED Light Strip
- Omni-Directional HDTV Antenna w/ Wi-Fi Prep
- LED Lights in Exterior Speakers

**INTERIOR**

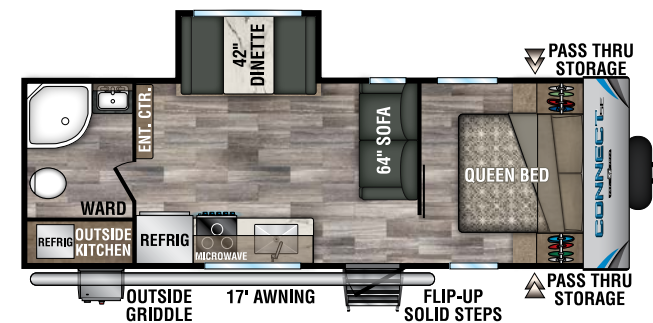
- Residential-Grade Linoleum
- 10 CU FT 12V Refrigerator w/Dual Temperature Control
- Stainless Steel Microwave
- Matte Black Residential Kitchen Faucet
- Interior Control Switches on Overhead End Cabinet w/ Convenience Center for Switches
- Accent Trim on Corners/Entry Doors

**2020 DÉCOR****C221RBSE** **NEW**

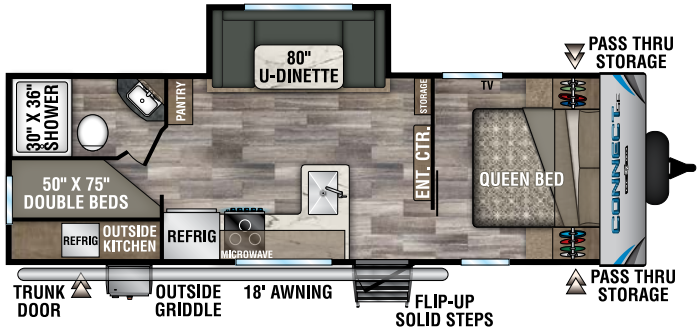
UVW - 5,230 | Exterior Length - 26' 11" | Sleeps 3

**C231BHKSE**

UVW - 5,380 | Exterior Length - 27' 9" | Sleeps 8

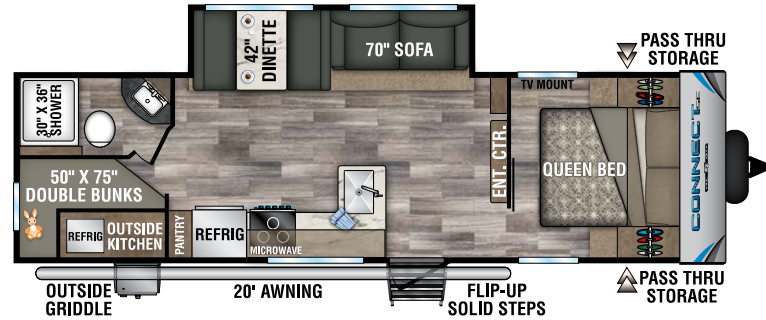
**C231RBKSE**

UVW - 5,260 | Exterior Length - 28' 3" | Sleeps 5



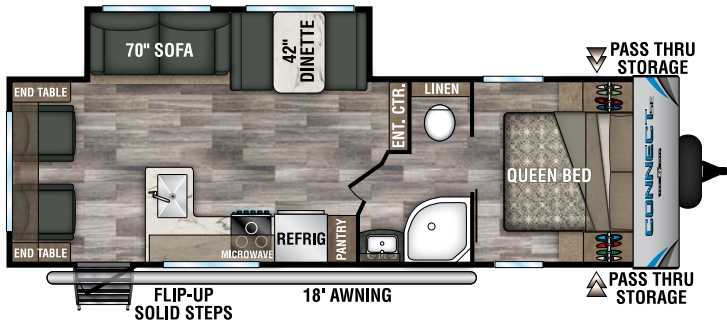
**C241BHKSE** *NEW*

UVW - 5,490 | Exterior Length - 29' 6" | Sleeps 8



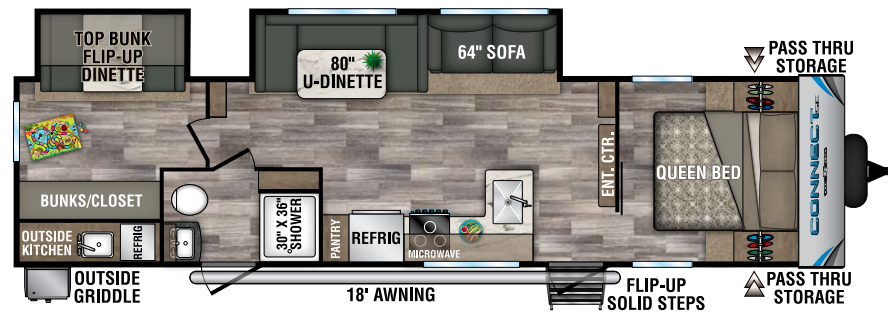
**C261BHKSE**

UVW - 5,890 | Exterior Length - 32' 2" | Sleeps 9



**C271RLSE**

UVW - 5,810 | Exterior Length - 30' 10" | Sleeps 5



**C312BHKSE**

UVW - 7,260 | Exterior Length - 36' 9" | Sleeps 8

Ultra Lightweight Travel Trailers	C221RBSE	C231BHKSE	C231RBKSE	C241BHKSE	C261BHKSE	C271RLSE	C312BHKSE
UVW (Unloaded Vehicle Weight)*	5,230	5,380	5,260	5,490	5,890	5,810	7,260
Dry Hitch Weight*	640	710	670	660	690	730	660
Dry Axle Weight*	4,590	4,670	4,590	4,860	5,200	5,080	6,600
NCC (Net Carrying Capacity)	2,090	1,975	2,075	1,810	1,450	1,555	2,200
GVWR	7,320	7,355	7,335	7,330	7,345	7,365	9,460
Interior Height	78"	78"	78"	78"	78"	78"	78"
Exterior Height w/ A/C	10' 8"	10' 8"	10' 8"	10' 8"	10' 8"	10' 8"	10' 8"
Exterior Width	96"	96"	96"	96"	96"	96"	96"
Exterior Length	26' 11"	27' 9"	28' 3"	29' 6"	32' 2"	30' 10"	36' 9"
Refrigerator (cu. feet)	10	10	10	10	10	10	10
Water Heater Cap. (gal. G/E w/DSI)	6	6	6	6	6	6	6
Fresh Water Cap. (gal.)	40	40	40	40	40	40	40
Waste Water Cap. (gal.)	32	32	32	32	32	32	32
Gray Water Cap. (gal.)	32	32	32	32	32	32	32
LP Gas Cap. (lbs.)	40	40	40	40	40	40	40
Furnace BTUs (1,000s)	30	30	30	30	30	30	30
Tire Size	14"	14"	14"	14"	14"	14"	15"
Awning	16'	19'	17'	18'	20'	18'	18'

\*This weight reflects the rolling average unit weight for each model. Your trailer weight will vary according to optional equipment.

STYLISH,  
ADVENTUROUS AND  
**BEAUTIFUL  
INSIDE & OUT!**

Affordable yet well-appointed, **CONNECT** offers creative floorplans. You'll love the gorgeous décor, entertainment features and high-end fiberglass exterior.

**CONNECT** is packed with standard features typically available only as options:

- Wide doorways
- Residential kitchen with pantry
- Flush-floor slideouts
- King-size bed

**COMFORTS AND  
AESTHETICS OF HOME**

Kitchens feature solid wood glazed maple cabinetry with modern bar handles and frosted glass accents.



C332BHK | Coffee décor



The **CHEF'S APPLIANCE PACKAGE** features a 2-piece stainless steel gas cooktop with built-in 22-inch oven.



Deep under-mount **STAINLESS STEEL KITCHEN SINK** with high-rise, black spring faucet.

10 CU FT 12-Volt **DOUBLE-DOOR REFRIGERATOR** with veggie bin. (C271BHK shown)  
(8 CU FT gas/electric refrigerator optional).



C261RB | Coffee décor

Island and L-shaped **KITCHEN FLOORPLANS** create spaciousness, with fresh LED lighting throughout. The seamless countertops are durable, beautiful and easy to clean.



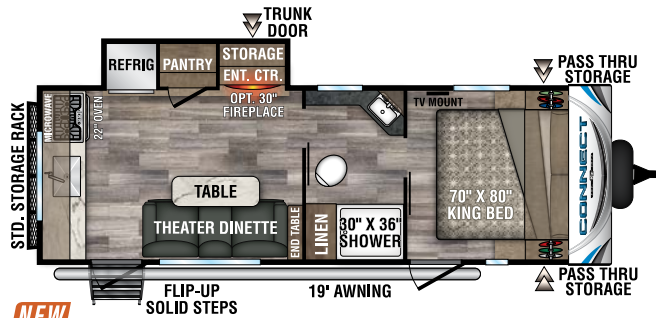
**70- X 80-INCH KING BED** with overhead cabinets, under-bed storage, and nightstands. **GENEROUS FULL-LENGTH CLOSET** offers hanger and shelf space. (C332BHK shown)



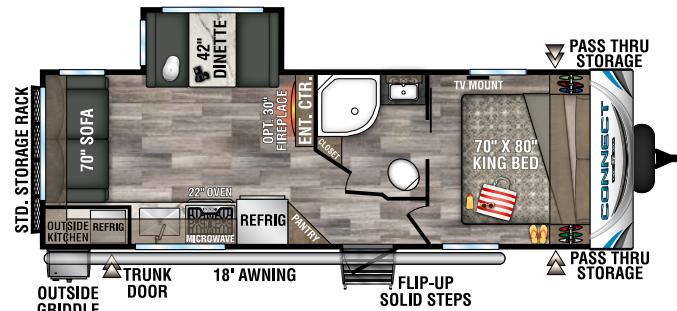
**FULL BATH** features a roomy shower with skylight, medicine cabinet, and vanity with counter space. Most floorplans include a linen closet. (C302RIK shown)



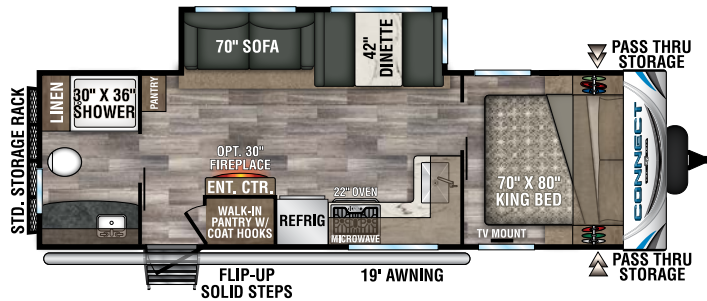
**DOUBLE-OVER-DOUBLE BUNK BEDS** boast a 500-pound weight capacity and feature additional easy-storage access under the bottom bunk. (C332BHK shown)



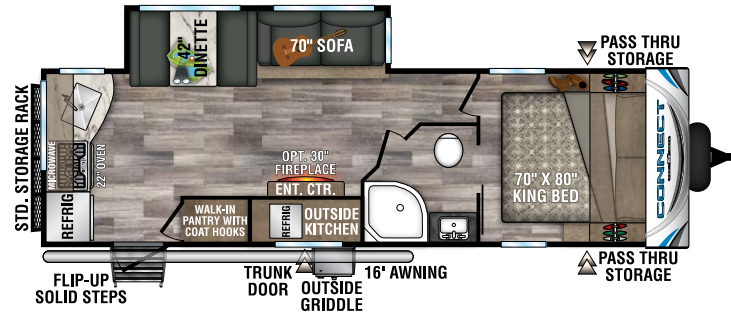
**NEW** C231RK UVW - 5,700 | Exterior Length - 28' 6" | Sleeps 3



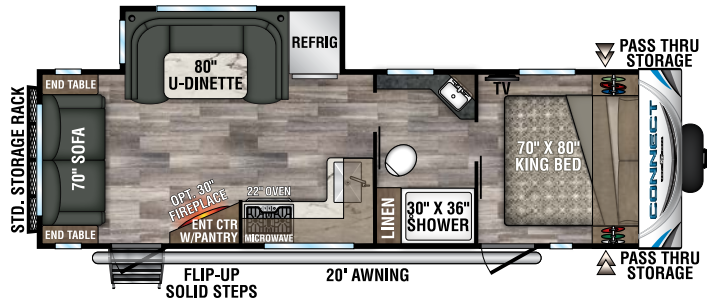
C241RLK UVW - 5,770 | Exterior Length - 29' 5" | Sleeps 5



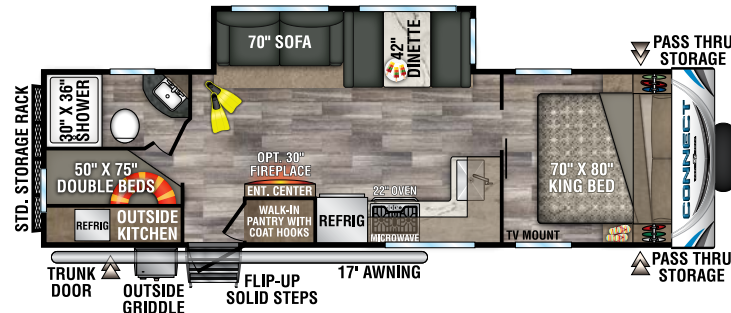
C261RB UVW - 6,050 | Exterior Length - 30' 8" | Sleeps 5



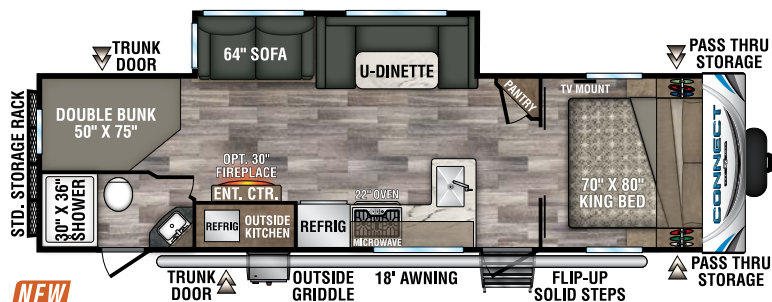
C261RKK UVW - 6,250 | Exterior Length - 31' 3" | Sleeps 5



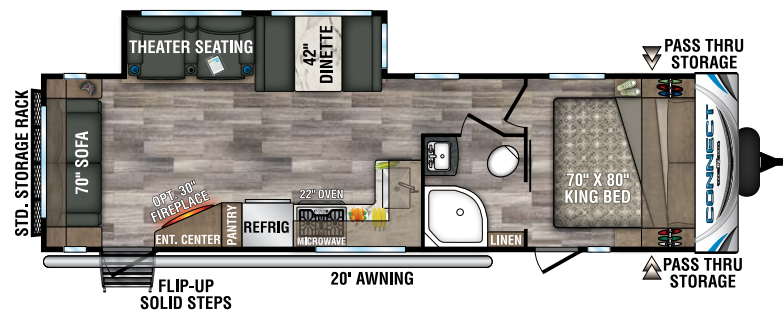
C261RL UVW - 6,040 | Exterior Length - 31' 3" | Sleeps 6



C271BHK UVW - 6,300 | Exterior Length - 32' 7" | Sleeps 9

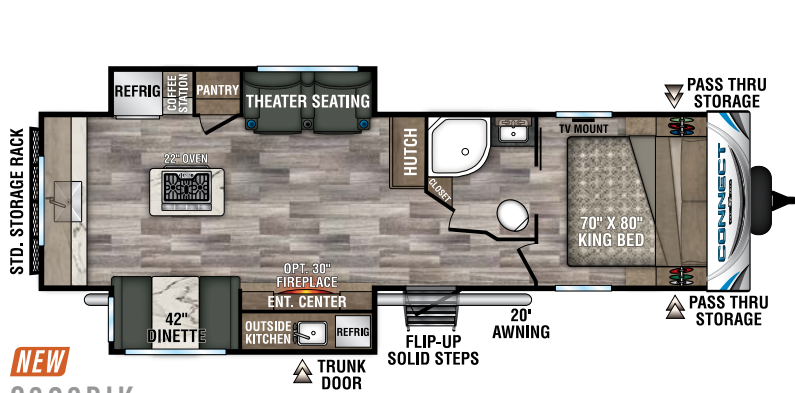


**NEW** C291BHK UVW - 6,750 | Exterior Length - 34' 4" | Sleeps 10

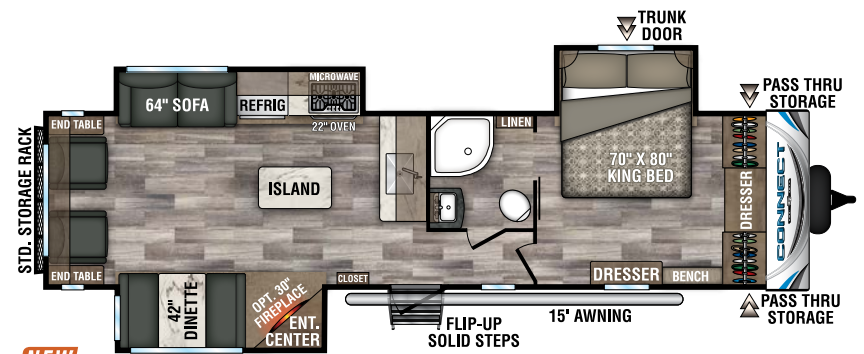


C291RL UVW - 6,540 | Exterior Length - 34' | Sleeps 5

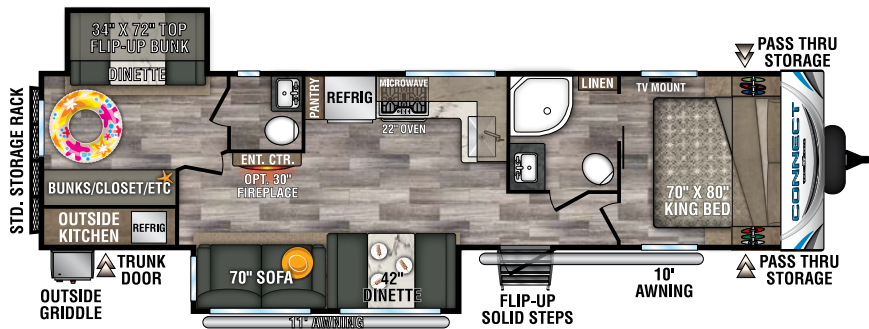




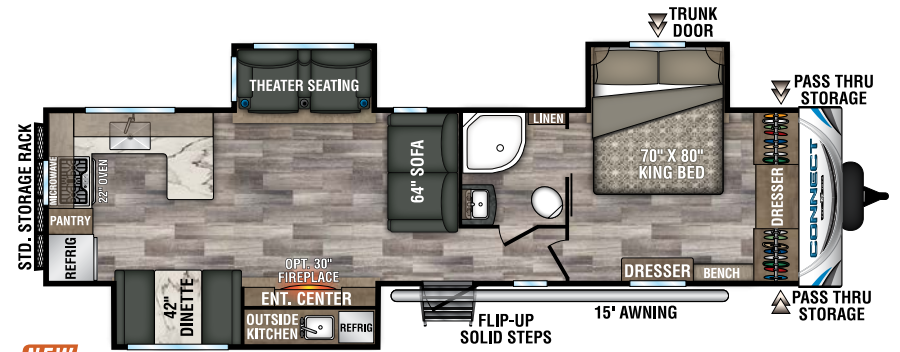
**NEW**  
**C302RIK** UVW - 7,560 | Exterior Length - 34' 4" | Sleeps 4



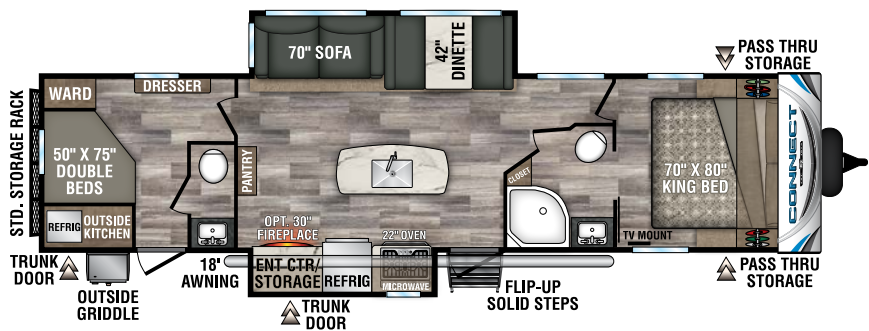
**NEW**  
**C313RL** UVW - 7,900 | Exterior Length - 36' 11" | Sleeps 5



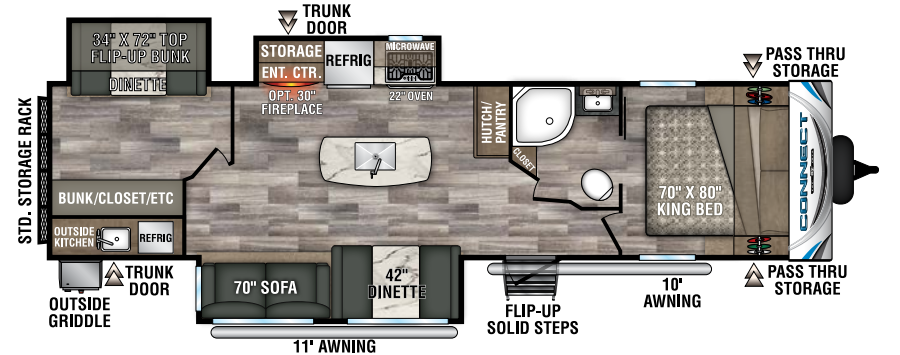
**C322BHK** UVW - 7,920 | Exterior Length - 37' 10" | Sleeps 9



**NEW**  
**C323RK** UVW - 8,290 | Exterior Length - 38' 5" | Sleeps 5



**C332BHK** UVW - 7,780 | Exterior Length - 37' 6" | Sleeps 9



**NEW** **C343BHK** UVW - 8,070 | Exterior Length - 37' 7" | Sleeps 9



**71-INCH FLIP-DOWN REAR STORAGE RACK** holds additional firewood, totes, or two adult-sized bicycles, and folds up completely when not in use. Includes spare tire and mount, and holds up to 200 pounds of cargo, including tire/wheel assembly.



## STANDARDS

- 3/8" Fully Walk-On Roof Decking
- 1-Piece, Seamless, Walk-on, Tufflex Roofing Material w/15-Year Warranty
- UVA & UVB Resistant Gelcoat Lamilux® Exterior Fiberglass
- Protective Front Diamond Plate
- KZ Easy-Catch Baggage Door Systems
- LED Exterior Lighting
- Outside Entertainment Prep (EXT 110V & cable outlets)
- (4) Stabilizer Jacks
- (2) 20# LP Bottles w/Bottle Cover
- Satellite & Cable Hookups
- 30 AMP Service
- 13,500 BTU A/C
- Water Heater Bypass
- 3-Burner Range w/Oven
- High-Rise Faucet
- Rich Woodbridge Maple Cabinetry
- Hand-Crafted Mortise & Tenon Cabinet Doors
- Roller Ball Bearing Drawer Glides
- Linoleum Throughout
- LED Interior Lighting
- Nightshades
- Shower Surround
- Skylight over Tub
- Roof Vent in Bath

- High Thread Count Quilted Reversible King Bedspread
- Gas Struts on Bed Base

## OPTIONS

- Roof Ladder
- Pillowtop Mattress
- Tri-Fold Hide-a-Bed Sofa (N/A C231RK)
- 50 AMP Service for 2nd A/C
- 15,000 A/C IPO 13,500 BTU
- Low Pro 13,500 A/C IPO 13,500 (C261RL & smaller)
- Low Pro 15,000 A/C IPO 13,500 (C261RL & smaller)
- 2nd A/C – 13.5K
- F/S Dinette Table & 4 Chairs IPO Dinette (N/A C231RK)
- Theater Seating w/Heat & Massage Features IPO Jackknife (N/A C313RL)
- Bumper Mount Grill
- MaxAir Vent Fan (bathroom only)
- Bedroom LED TV w/Inside/Outside TV Bracket
- Front & Rear Electric Stabilizer Jacks
- Trundle Bed IPO Dinette in Bunk Slide (C322BHK, C343BHK)
- 10 CU FT 12V Refrigerator IPO 8 CU FT Stainless Steel Gas/Electric Refrigerator
- Wireless Backup Camera System – Observation

- Radiant Technology Package (foil in floor, roof, front & rear)
- 30" Fireplace
- Ottoman w/Storage
- Bedroom Pillow Package

## PLATINUM PACKAGE

- Fiberglass Front Cap
- Pillowtop Mattress
- Headboard

## KZ ADVANTAGE PACKAGE

### (MANDATORY OPTION)

#### EXTERIOR

- Color Infused Titanium Exterior Fiberglass
- Flip-Up Entry Step (main entry)
- Friction Hinged Entry Door w/ Shade Prep & Screenshot Features
- Power Front Jack
- Key-Alike Program for Baggage & Entry Doors
- Magnetic Catches for Baggage Doors
- Large Folding Grab Handle
- Exterior Speakers
- Spare Tire
- Solar Prep
- Backup Camera Prep

- Flip Down 71" Storage Rack
- Equa-Flex® Suspension
- Nitrogen Filled Tires
- Battery Disconnect Switch
- Climate Package (heated, insulated & enclosed underbelly)
- Leash Latch w/Bonus Beverage Opener

#### INTERIOR

- Jackknife w/Middle Console & Bolster Arms
- Chef's Appliance Package: 2 piece SS Gas Cooktop w/Built-in 22" Oven
- (2) 12V USB Ports in Bedroom
- Seamless Countertops w/Deep Undermount Stainless Steel Kitchen Sink
- Sink Cover
- Plywood Bed Base w/Gas Struts
- 12V Dual USB in Bunk Area
- (2) 6.5" Interior Speakers
- LED TV
- Multi-Media Sound Bar Stereo w/ Bluetooth, HDMI and USB Charge
- (2) LED Motion Sensor Lights
- 70" x 80" King Mattress
- 36" Storage Bins at Dinette
- Kitchen Skylight

- Bright White LED Light Strip above Slideout Room (main LR only)
- Flush Floor Slideouts
- Wider Pocket/Passage Interior Doors
- Color Accented Shower Walls
- Bathroom Shelf w/Towel Hooks

## KZ CONVENIENCE PACKAGE

### (MANDATORY OPTION)

#### EXTERIOR

- Aluminum Wheels
- Power Awning w/LED Light Strip
- Omnidirectional HDTV Antenna w/ Wi-Fi Prep
- LED Lights in Exterior Speakers

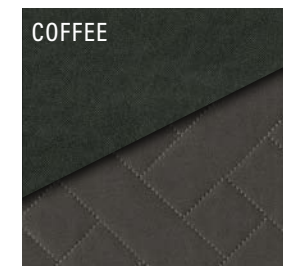
#### INTERIOR

- Residential Grade Linoleum
- 8 CU FT Gas/Electric Refrigerator w/ Temperature Controls
- Stainless Steel Microwave
- Matte Black Residential Kitchen Faucet w/Spring Sprayer
- Interior Control Switches on O/H End Cabinet w/Convenience Center for Switches
- Accent Trim on Corners/Entry Doors
- Porcelain Toilet w/Foot Flush

Lightweight Travel Trailers	C231RK	C241RLK	C261RB	C261RKK	C261RL	C271BHK	C291BHK	C291RL	C302RIK	C313RL	C322BHK	C323RK	C332BHK	C343BHK
UVW (Unloaded Vehicle Weight)*	5,700	5,770	6,050	6,250	6,040	6,300	6,750	6,540	7,560	7,900	7,920	8,290	7,780	8,070
Dry Hitch Weight*	598	530	690	660	700	800	790	710	910	850	760	1,000	980	840
Dry Axle Weight*	5,102	5,240	5,360	5,590	5,330	5,500	5,960	5,830	6,650	7,050	7,160	7,290	6,800	7,230
NCC (Net Carrying Capacity)	1,599	1,495	1,295	1,080	1,315	1,100	2,445	2,615	1,695	1,750	1,640	1,510	2,000	1,570
GVWR	7,299	7,265	7,345	7,330	7,355	7,400	9,195	9,155	9,255	9,650	9,560	9,800	9,780	9,640
Interior Height	78"	78"	78"	78"	78"	78"	78"	78"	78"	78"	78"	78"	78"	78"
Exterior Height w/ A/C	10' 8"	10' 8"	10' 8"	10' 8"	10' 8"	10' 8"	10' 8"	10' 8"	10' 8"	10' 8"	10' 8"	10' 8"	10' 8"	10' 8"
Exterior Width	96"	96"	96"	96"	96"	96"	96"	96"	96"	96"	96"	96"	96"	96"
Exterior Length	28' 6"	29' 5"	30' 8"	31' 3"	31' 3"	32' 7"	34' 4"	34'	34' 4"	36' 11"	37' 10"	38' 5"	37' 6"	37' 7"
Refrigerator (cu. feet)	8	8	8	8	8	8	8	8	8	8	8	8	8	8
Water Heater Cap. (gal. G/E w/DSI)	6	6	6	6	6	6	6	6	6	6	6	6	6	6
Fresh Water Cap. (gal.)	40	40	40	40	40	40	40	40	40	40	40	40	40	40
Waste Water Cap. (gal.)	32	32	32	32	32	32	32	32	32	32	64	32	64	32
Gray Water Cap. (gal.)	64	32	64	64	32	64	64	32	64	32	64	64	64	32
LP Gas Cap. (lbs.)	40	40	40	40	40	40	40	40	40	40	40	40	40	40
Furnace BTUs (1,000s)	30	30	30	30	30	30	30	30	30	30	30	30	30	30
Tire Size	14"	14"	14"	14"	14"	14"	15"	15"	15"	15"	15"	15"	15"	15"
Awning	19'	18'	19'	16'	20'	17'	18'	20'	20'	15'	10'/11'	15'	18'	10'/11'

\*This weight reflects the rolling average unit weight for each model. Your trailer weight will vary according to optional equipment.

## 2020 DÉCOR



# CONNECT® SE & CONNECT® EXTERIOR FEATURES



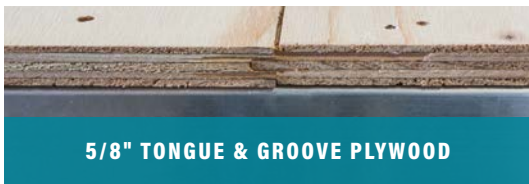
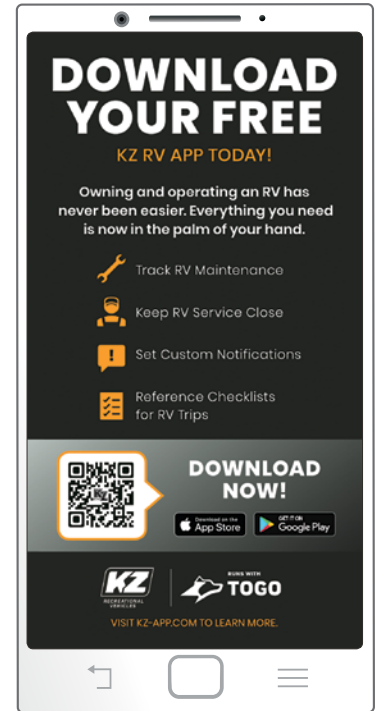
**FLIP-UP ENTRY STEP** provides solid footing, and folds neatly away. The friction-hinged entry door with grab-bar and screen-shot feature eliminates slamming and makes for safe, easy passage.



**POWER AWNING WITH LED** light strip provides relaxing nighttime ambience.



**12V DUAL USB PORTS** in bedroom & bunk area.



**5/8" TONGUE & GROOVE PLYWOOD**



**OUTDOOR KITCHENS** (floorplan specific) include giddle and refrigerator.



Added insulation so you can extend the camping season, with a fully enclosed, insulated and heated underbelly to protect tanks and pipes (R-9 sidewalls, R-20 roof, and R-24 floor).



**BACKUP CAMERA PREP**



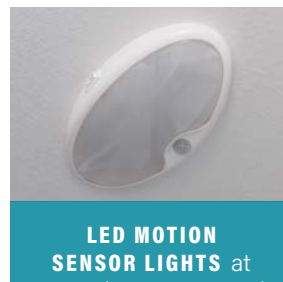
**ALUMINUM WHEELS** and nitrogen-filled radial tires are standard.



**SATELLITE & CABLE** prewired hookups



**LIGHTED TONGUE JACK** assists setup and teardown.



**LED MOTION SENSOR LIGHTS** at entry door, pantry and storage pass-through. (Connect only)



**PLATINUM PACKAGE** includes fiberglass front cap, pillowtop mattress, and stylish padded headboard. (Connect only)



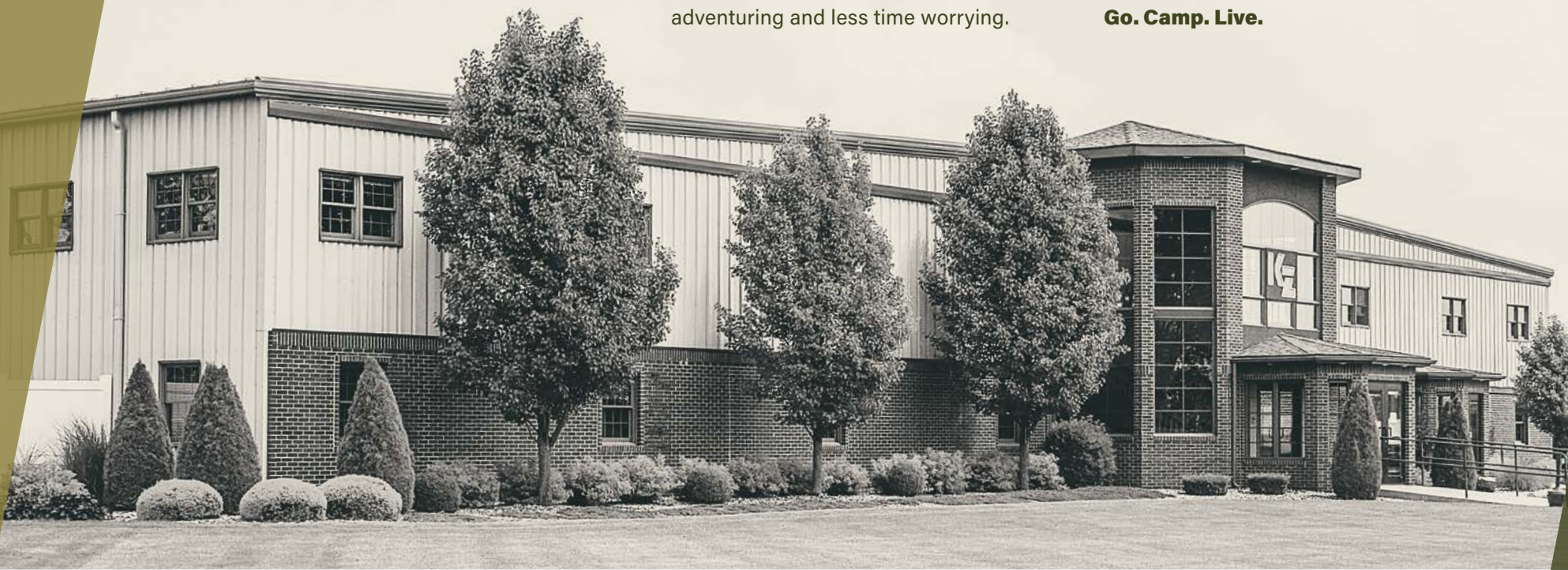
# RECREATIONAL VEHICLES

## HANDCRAFTED TO HIGH STANDARDS

In 1972, Sam King and Daryl Zook built a truck camper—and built a better way to camp. Since then we’ve built recreational vehicles with a focus on craftsmanship and quality, so you can spend more time adventuring and less time worrying.

When you hitch to a KZ Recreational Vehicle, you can expect adventure, good times, and old-world values. We care about your camping experience. Because your KZ is where the journey starts.

**Go. Camp. Live.**



The KZ **True 2 Warranty** is a **2-year hitch-to-bumper limited warranty** that's true to its name. The gold standard in RV protection, True 2 provides double the coverage of the industry norm. Plus, our warranty is backed by the craftsmanship and quality we're known for, so you can Go. Camp. Live. Wherever your adventure takes you, know that you're covered in your KZ.

Dealer:

