

**DURANGO**

FULL-PROFILE LUXURY FIFTH WHEELS



RECREATIONAL  
VEHICLES

# DURANGO



**DURANGO**  
FULL-PROFILE LUXURY FIFTH WHEELS



INTERIOR

DURANGO

## **GENEROUS LUXURY** AT AN **AFFORDABLE PRICE**

**DURANGO** offers the best of all worlds. If the highway calls but you still need space and creature comforts, Durango's got you covered. The all-weather insulation package keeps you comfy no matter the weather, and electric auto-leveling makes setup a breeze.

Sweeten the deal with upgrades, like heat and massage theater seating, full-size 18-cubic-foot residential refrigerator, central vacuum or off-the-grid solar package.



D333RLT | Havana décor



**BATHROOM** has generous his-and-hers vanity with stainless steel sinks and plenty of drawer and cabinet space (D333RLT shown)



### **PERKS OF HOME SWEET HOME**

- glazed maple cabinetry
- solid surface countertops
- stainless steel sink and appliances (D333RLT shown)

**MASTER BEDROOM** features six-drawer dresser, a padded window seat bench, and optional 32-inch TV. (D333RLT shown)







Optional home-sized **18-CUBIC-FOOT RESIDENTIAL REFRIGERATOR** with 1,200W inverter means you pretty much *can* take it all with you!

**CHEF'S APPLIANCE PACKAGE** includes a 3-burner stainless steel gas range with built-in oven and 30-inch convection microwave. Maple cabinetry with solid door fronts offers plenty of storage, and you'll appreciate the generous counter space and wide window.



**LUXURY BEDROOM**

- 70 x 80-inch king bed
- overhead storage and decorative shelving
- USB ports, outlets and oversized light switches are all within easy reach (D348BHF shown)



**STAINLESS STEEL SINK** with spring sprayer faucet and seamless **SOLID-SURFACE COUNTERTOPS**



**LED TV & MULTI-MEDIA STEREO** with DVD, Bluetooth and wireless connectivity with **COZY AMBIENCE** from the 40-inch wide-view fireplace (D348BHF shown).

**CONSTRUCTION FEATURES**

- Steel Powder Coated I-Beam w/ Drop-Frame Pass-Thru Storage
- R-11 2" Block Foam Bonded Sidewalls w/EGS Metal Backing Strips (to support all int. cabinets)
- Lamilux® Gelcoat Fiberglass
- Fully-Insulated Sliderooms
- 1-Piece, Seamless, Walk-on, Tufflex Roofing Material w/15-Year Warranty
- 5/8" Tongue & Groove, Screwed & Glued Plywood Floor Decking
- Fully-Vented Attic System
- Completely Heated Water System
- Pex® In-Floor Heated Waterlines & Kitchen Gray Pipes (all waterlines & drainlines are located above all insulation)
- Fully Heated & Enclosed Underbelly
- Radius Front Cap (for increased turning radius on short bed trucks)
- Extra-Reinforced Heavy-Duty Front Fiberglass Cap
- All Weather Insulation PKG (upgrades roof, floor, ceiling, endcaps & tanks to R-38)

**EXTERIOR FEATURES**

- Dexter® Axles w/Self Adjusting Brakes & Height Adjusting Hangers
- 8-Lug Heavy-Duty Aluminum Rims w/16" E-Range Nitrogen-Filled Radial Tires
- 100% Exterior LED Running Lights & Taillights
- LED Front Docking Light & Sewer Hookup Light
- Electric Power Awning w/LED Light Strip
- (2) 30 LB. Propane Bottles on Same Side of Coach for Easy Access
- Side-Mounted Sealed Battery Compartment
- Partially Painted Front Cap
- 50 AMP Service w/Marine Power Cord
- 15,000 BTU Ducted Roof A/C w/ Pre-Wire for Optional 13,500 BTU Bedroom A/C
- 3" x 14" Foam-Core In-Floor Straight-Line Heating System w/35,000 BTU Furnace
- Deluxe Heated Water Convenience Center (incl. black tank flush, power fresh tank water fill, winterizing system, outside shower)

- Fully-Finished, Heated & Sealed Basement Storage Compartment
- 12 GAL Gas/Electric/DSI Hot Water Heater
- Swing-Away Assist Grab Handle
- Roof Ladder
- No-Slide Rubberized Basement Flooring
- Dual Lock Basement Storage Slam Latches
- Satellite Pre-Wire (roof & ground)
- Outside Speakers & Pre-Wire for Exterior TV
- Full-Perimeter Rain Gutter System (incl. rear & additional gutters over sliderooms)
- LP Quick Connect
- Under-Mount Spare Tire

**LIVING ROOM / KITCHEN FEATURES**

- Solid Surface Kitchen Countertops & Sink Covers w/Large Handholds
- Residential Stainless Steel Sink
- Pullout High Arching Faucet
- Storage Shelf under Kitchen Sink
- Heavy-Duty 100 LB Drawer Glides on Every Drawer
- Baltic Birch Drawer Boxes
- Kitchen Window (most models)
- All-Wood Lumber Core Screwed Cabinets w/Hardwood Doors
- 5" Brushed Nickel Cabinet Hardware
- 3/8" Re-Bond Carpet Pad w/22 OZ Residential Carpet Throughout
- XL Toggle Light Switches
- Large Ceiling Crown Molding
- All LED Ceiling & Cabinet Lights w/ Multiple On/Off Switches
- Deluxe Residential-Style Furniture
- HD Flat Panel TV w/Swing Arm Bracket & Storage behind TV (most models)
- Adjustable Pantry Shelves (where applicable)
- All Kitchen OH Cabinets incl. Shelf
- 4" High Density Foam Cushions on all Booth Dinettes
- Ceiling Fan (where applicable)

**BATHROOM / BEDROOM FEATURES**

- Residential One-Piece Fiberglass Shower Stall w/Built-In Seat & Glass Doors
- Shower Skylight

- Porcelain Foot-Flush Toilet
- All LED Lights in Bed & Bath w/ Multiple Large Switches
- Vent Fan in all Baths
- Large Linen Closet in Every Bathroom
- One-Level, Full-Height Bedrooms
- Padded Headboard w/Power Outlet Near Bed
- XL Under-Bed Storage
- Luxurious Bedspread
- Dual Drawers, Large Hanging Space
- Washer & Dryer Prep in Front Closet
- Bedroom TV Pre-Wire

**OPTIONS (EXTERIOR)**

- 2nd Ducted A/C (13,500 BTU)
- 2nd Ducted A/C Mach 10 Low Pro (13,500 BTU)
- Dual Pane Frameless Windows
- Wireless Backup Camera System - Observation & Vision S
- "Off the Grid" Solar Package\*
- Roto Flex Rubberized Pin Box
- Generator Prep (includes start/stop harness)
- 5.0KW LP Onan Generator (requires prep)
- 2nd LED Lighted Power Awning (D333RLT, D343MBQ, D348BHF)
- 32" Exterior TV w/Bracket

**OPTIONS (INTERIOR)**

- 32" Bedroom LED TV
- F/S Dinette Table & 4 Chairs IPO Dinette
- Theater Seating w/Heat & Massage Features IPO Tri-Fold HAB (D348BHF)
- House Residential Refrigerator w/1200W Inverter (18 CU FT) IPO 12 CU FT Gas/Electric Refrigerator (N/A CSA option)
- Power Vent Fan in Bathroom
- Queen Black Label Pillowtop Mattress 60" x 80"
- Central Vac System
- Hide-A-Bed Sofa IPO Lower Bunk (D348BHF only)

*\*Cannot get House Residential Refrigerator w/"Off the Grid" Solar Package*

**KZ ADVANTAGE PACKAGE (MANDATORY OPTION)****EXTERIOR**

- 4 Point Auto Electric Leveling
- Polar White Gelcoat Exterior Fiberglass

- Painted Fiberglass Front Cap
- 5-Sided Aluminum Framing
- Flip-Up Entry Steps (main entry)
- 50 AMP Service w/2nd A/C Prep
- 15K Ducted A/C
- 5/8" Tongue & Groove Plywood Floor
- Key-Alike for Baggage & Entry Doors
- Friction Hinge Entry Door w/Shade Prep & Screenshot Features
- X-Large Folding Grab Handle
- Power Front Jack
- Undermount Spare Tire
- Equa-Flex® Suspension
- Nitrogen-Filled Tires
- Battery Disconnect
- Black Tank Flush
- Backup Camera Prep
- Roof Mounted Solar Prep w/Connection
- All Weather Insulation Package (heated, insulated & enclosed underbelly plus foil in floor, roof, front, rear)
- 2" Towing Receiver Hitch w/4 Pin Wire Harness Connection (3,000 LB tow rating & 300 LB hitch rating)
- Roof Ladder
- (2) Attic Vents
- Leash Latch w/Bonus Beverage Opener

**INTERIOR**

- Maple Glazed Cabinetry
- Glazed Solid Hardwood Slideout Fascia
- Solid Surface Countertops w/Deep Undermount Stainless Steel Kitchen Sink w/Sink Cover
- Trash Can Under Sink
- Chef's Appliance Package (2-piece SS gas cooktop w/built-in oven & 30" convection microwave)
- Kitchen Skylight w/Shade
- Power Vent Fan in Main Area
- 36" Pullout Storage Bins in Booth Dinette
- Tri-Fold HAB Sofa
- (3) Motion Sensor Lights (entry, closet, basement)
- 40" Wideview Fireplace
- LED TV
- Multiple Media Stereo w/DVD/Bluetooth/NFC Wireless Connectivity
- 12V Dual USB Charging Station
- Night Roller Shades
- Porcelain Foot-Flush Toilet
- Stainless Steel Bathroom Sink

- Plywood Bed Base
- Upgraded King Black Label Pillowtop Mattress 70" x 80"
- Legless Table Base for Dinette Table & Chairs (select models)
- Pocket Door for Bathroom

**KZ CONVENIENCE PACKAGE (MANDATORY OPTION)****EXTERIOR**

- KZ Engage Powered by OneControl w/ 5" screen (control system monitors tank levels & battery levels, controls slide rooms, leveling system, awnings, inside/outside lighting)
- Power Awning w/LED Light Strip
- 16" Tires w/Aluminum Wheels
- Magnetic Catches for Baggage Doors
- Omnidirectional HDTV Antenna w/ WiFi Prep
- LED Lights in Exterior Speakers

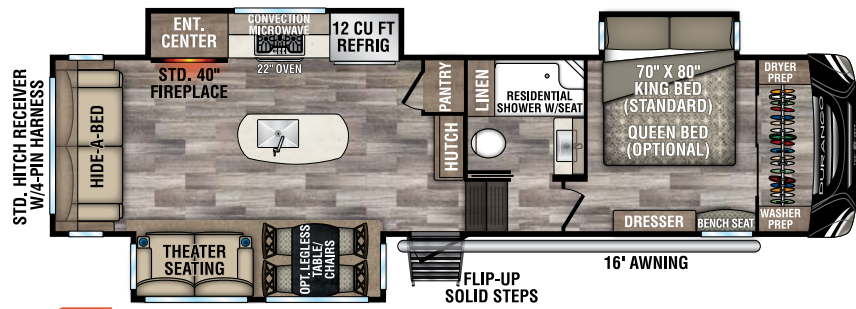
**INTERIOR**

- Residential Grade Linoleum
- 12 CU FT Gas/Electric Refrigerator w/Temperature Controls
- Matte Black Residential Kitchen Faucet w/Spring Sprayer
- Surfex Wood Step in FW Hallway
- Interior Control Switches on Overhead End Cabinet w/ Convenience Center for Switches
- Wood Accent Trim on Corners/Entry Doors
- Electric Outlet in Bunk Area
- Vision S Prep (blind spot monitoring)

**BONUS FEATURES**

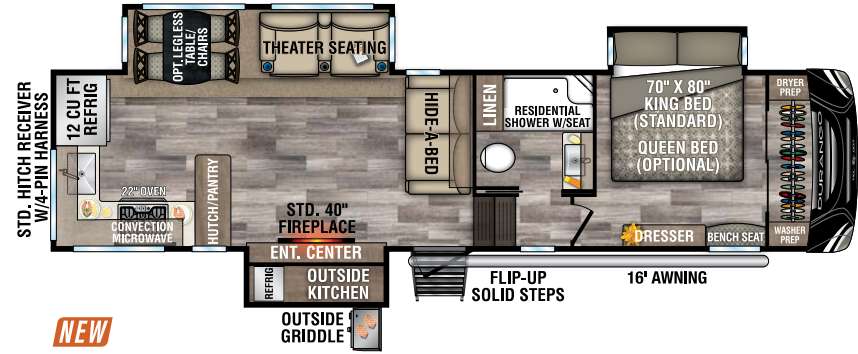
- 2-Year Limited Warranty (see flyer)
- Lightest high-profile, wide body, luxury fifth wheels in the industry (average weight is 11,100 LBS)
- KZ has received the Dealer Satisfaction Index Award for 19 years
- KZ's 48 years of stable, dedicated manufacturing experience, coupled with its predominant Amish workforce, heritage and commitment to superb quality, allow us to produce the best value luxury fifth wheel available.





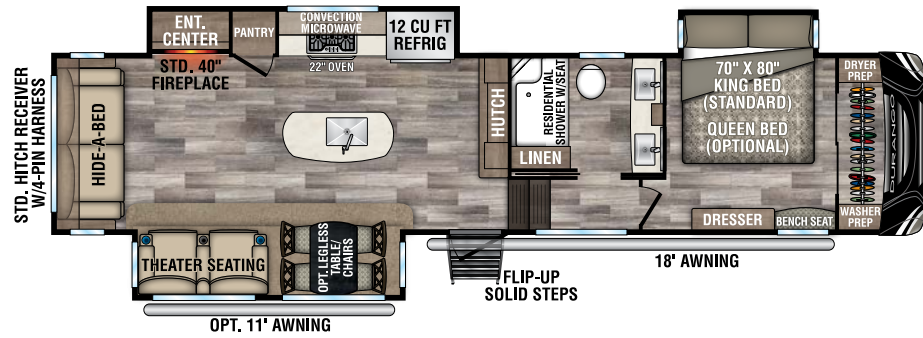
**NEW**

**D301RLT** UVW - 10,130 | Exterior Length - 34' 3" | Sleeps 4

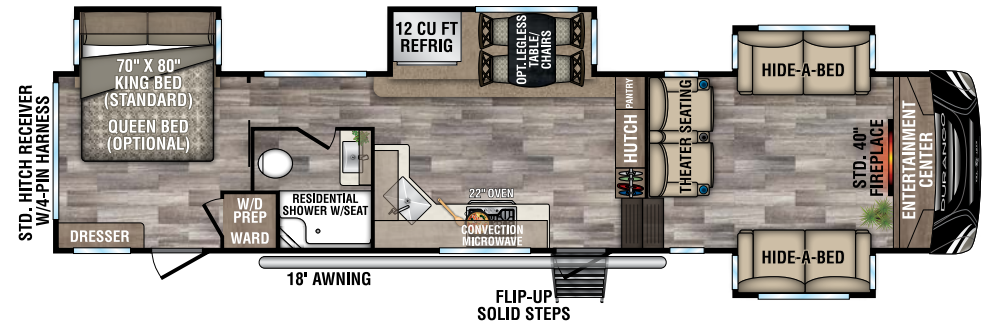


**NEW**

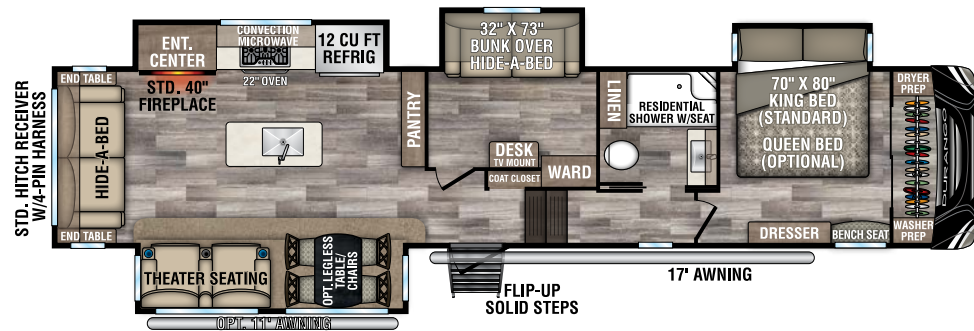
**D321RKT** UVW - 10,380 | Exterior Length - 34' 10" | Sleeps 4



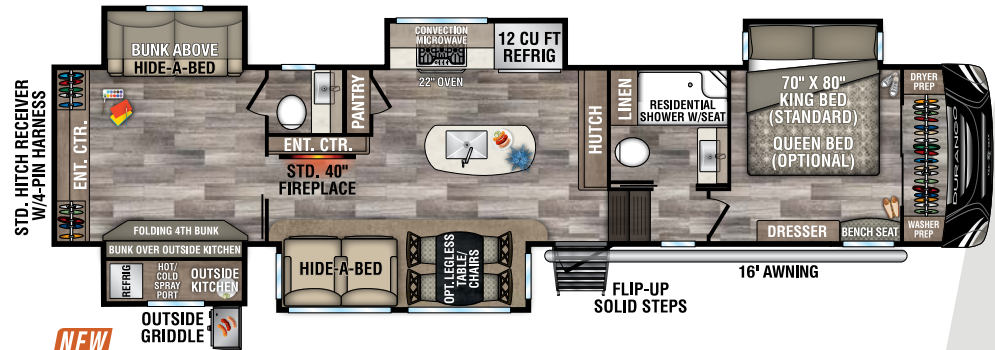
**D333RLT** UVW - 10,790 | Exterior Length - 37' 10" | Sleeps 4



**D342FLQ** UVW - 11,070 | Exterior Length - 39' 11" | Sleeps 6



**D343MBQ** UVW - 11,770 | Exterior Length - 40' 3" | Sleeps 7



**NEW**

**D348BHF** UVW - 12,320 | Exterior Length - 40' 8" | Sleeps 9

**2020  
DÉCOR**

**HAVANA**

**SEA SALT**





12 CU FT gas/electric  
**4-DOOR REFRIGERATOR**  
with temperature controls



**THEATER SEATING**  
with heat,  
massage, and LED  
lighted cupholders



Stainless steel  
**BATH SINK** with  
high-rise faucet

## INTERIOR FEATURES



Heated, insulated  
& enclosed underbelly plus foil  
in floor, roof, front, rear! R-11  
sidewalls, R-38 roof and floor.



**FLEXIBLE**



**PUNCTURE  
RESISTANCE**



**REFLECTIVE**

**TUFFLEX ROOFING**  
by Dicor Products  
15-YEAR WARRANTY!

Fifth Wheels	D301RLT	D321RKT	D333RLT	D342FLQ	D343MBQ	D348BHF
UVW (Unloaded Vehicle Weight)*	10,130	10,380	10,790	11,070	11,770	12,320
Dry Hitch Weight*	1,950	2,070	2,080	2,370	2,250	2,270
Dry Axle Weight*	8,180	8,310	8,710	8,700	9,520	10,050
NCC (Net Carrying Capacity)	2,865	2,615	2,205	3,925	3,225	2,675
GVWR	12,995	12,995	12,995	14,995	14,995	14,995
Exterior Height w/ A/C	12' 9"	12' 9"	12' 10"	12' 10"	12' 10"	12' 10"
Exterior Width	96"	96"	96"	96"	96"	96"
Exterior Length**	34' 3"	34' 10"	37' 10"	39' 11"	40' 3"	40' 8"
Refrigerator (cu. feet)	12	12	12	12	12	12
Water Heater Cap. (gal. G/E w/DSI)	12	12	12	12	12	12
Fresh Water Cap. (gal.) [Including Water Heater Capacity]	67	67	67	67	67	67
Waste Water Cap. (gal.)	53	53	53	53	53	93
Gray Water Cap. (gal.)	53	93	53	53	53	53
1/2 Bath Cap. (gal.)	N/A	N/A	N/A	N/A	N/A	40
LP Gas Cap. (lbs.)	60	60	60	60	60	60
Furnace BTUs (1,000s)	35	35	35	35	35	35
Tire Size	16"	16"	16"	16"	16"	16"
Awning	16'	16'	18'/11 opt.	18'	17'/11 opt.	16'

\*This weight reflects the rolling average unit weight for each model. Your trailer weight will vary according to optional equipment.

\*\*Exterior length is measured from center of hitch pin to rear wall.





## KZ ENGAGE

is powered by OneControl with a 5" screen. The control system monitors tank and battery levels, controls the sliderooms, leveling system, awnings, and inside/outside lighting.

# DURANGO EXTERIOR FEATURES



**CENTRALIZED COMMAND CENTER** well-lit, heated & all systems conveniently located



**140-CUBIC-FOOT BASEMENT STORAGE** featuring motion-light



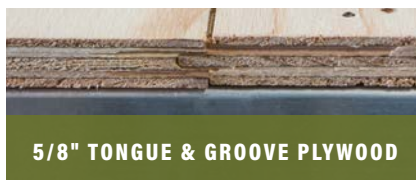
**8-lug, heavy-duty, 16-inch ALUMINUM WHEELS** with E-range tires (G-range on select models)



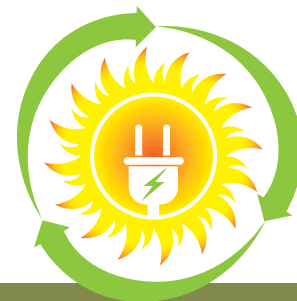
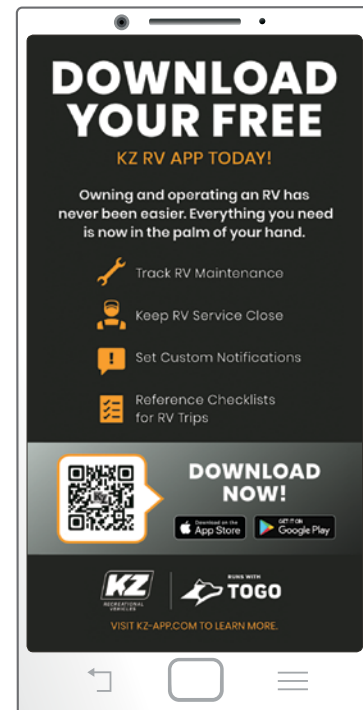
**STANDARD FLIP-UP ENTRY STEP** solid footing, coming and going. Handy friction hinge and screenshot auto-door-close feature.



Standard **4-POINT AUTO-LEVELING** does all the work



**5/8" TONGUE & GROOVE PLYWOOD**



Harness the power of the sun to run your TV and outlets. Roof mounted solar prep standard. **Optional "Off the Grid" solar package** includes 190W panel, 1200W inverter and interior control center.



**FULLY VENTED ATTIC SYSTEM**

Two attic vents are in each RV, providing vital escape routes for unwanted moisture that accumulates during use.





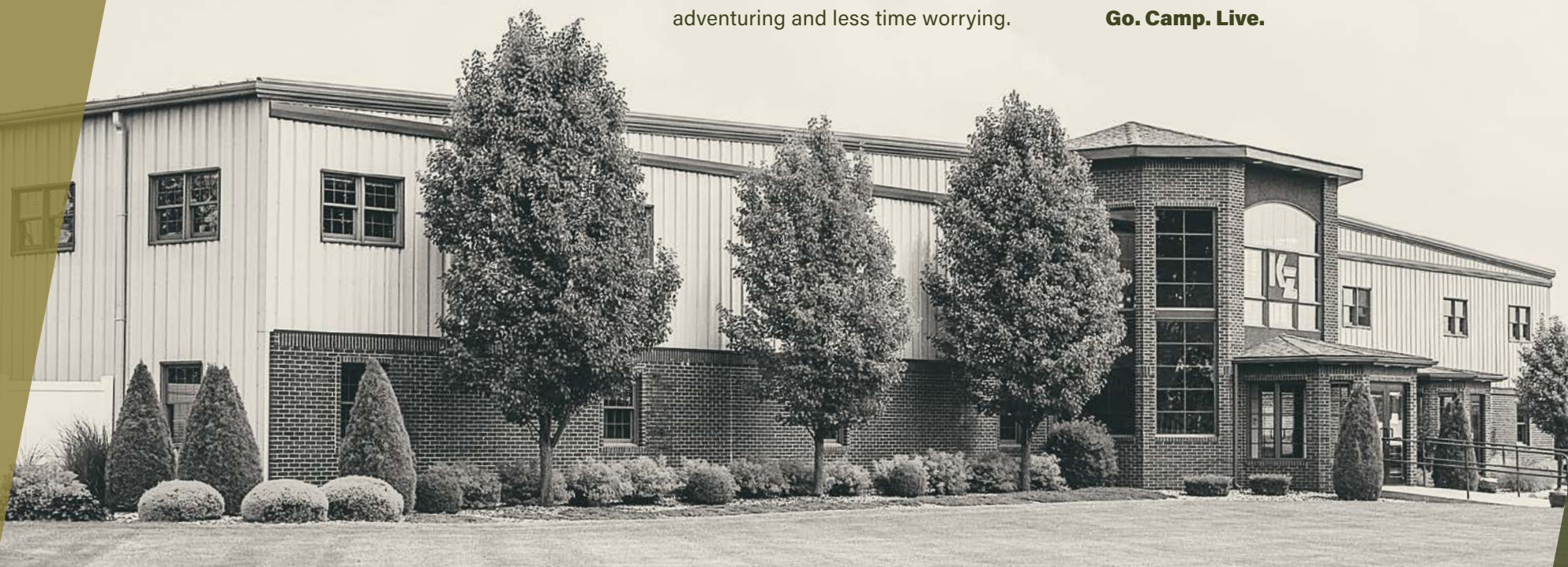
## RECREATIONAL VEHICLES

## HANDCRAFTED TO HIGH STANDARDS

In 1972, Sam King and Daryl Zook built a truck camper—and built a better way to camp. Since then we've built recreational vehicles with a focus on craftsmanship and quality, so you can spend more time adventuring and less time worrying.

When you hitch to a KZ Recreational Vehicle, you can expect adventure, good times, and old-world values. We care about your camping experience. Because your KZ is where the journey starts.

**Go. Camp. Live.**



The KZ **True 2 Warranty** is a **2-year hitch-to-bumper limited warranty** that's true to its name. The gold standard in RV protection, True 2 provides double the coverage of the industry norm. Plus, our warranty is backed by the craftsmanship and quality we're known for, so you can Go. Camp. Live. Wherever your adventure takes you, know that you're covered in your KZ.



Portions of this brochure were used with the expressed authority of Dexter Axle, but Dexter Axle is not responsible for the accuracy of the information contained herein.

Dealer:

