

CAMEO



WARRANTY FOR FULL TIME RVING*

*REFERENCE CROSSROADS RV OWNERS MANUAL FOR LIMITED WARRANTY DETAILS

CROSSROADS
Recreational Vehicles

Twice is



DUAL Pullout Pantry Drawers



DUAL Flat-Front Fireplaces
Heats 1,000 FT²



DUAL Wireless Chargers



DUAL Power Vent Fan



DUAL 15,000
A/C Units



DUAL Awning Accessories



DUAL Scare Lights

is Nice



2 Scare Lights

Industry 1st
Automotive Windshield

Roto Flex Pin Box

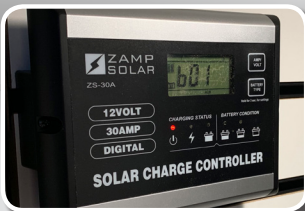
Generator Prep

Blind Spot Prep

Hydraulic 6 Point
Auto Level



5,000 BTU
AC Units



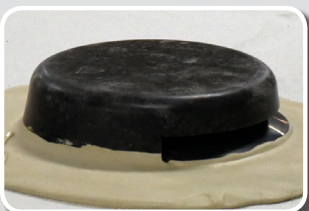
DUAL Solar Prep



DUAL Awnings



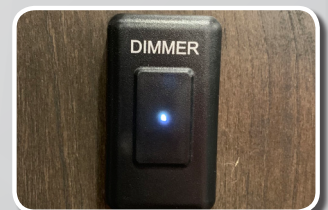
50" HDTV - Living Room
39" HDTV - Bedroom



DUAL Attic Vents



DUAL C-Pap Shelves



DUAL Dimmer Switches



DINETTE TABLE & 4 CHAIRS



STANDARD KING BEDS

DUAL VANITY



3891MK RESIDENTIAL RANGE HOOD

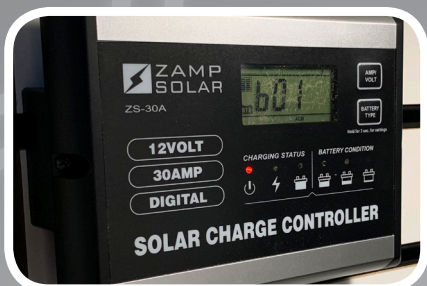


3921BR SOCIAL BAR



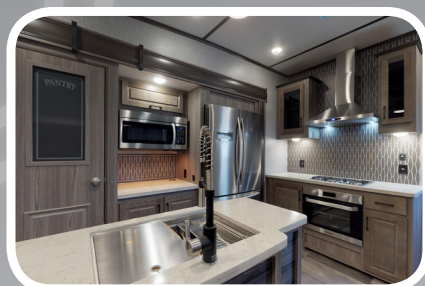
EXTREME WEATHER PACKAGE

- Upgraded Insulation Throughout Unit
- Heated Tank Area



ZAMP SOLAR

- Dual Inputs for Solar Power



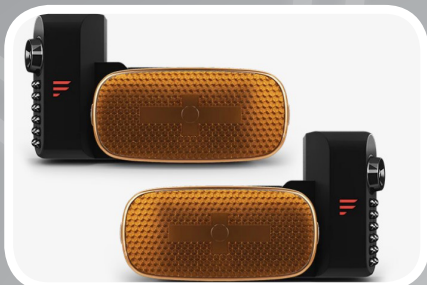
FURRIION CHEF COLLECTION

- Stainless Steel Appliances
- Pullout Sprayer Faucet
- Residential Range Hood



KEYTV

Single-Point control system for over-the-air, cable and satellite television.



FURRIION VISION S OBSERVATION

Prepped for the Furrion's Vision S Observation system



CRE 3,000

Superior suspension system for a smoother ride and more flexibility.



STANDARD HEAT PADS ON TANKS

Heat on Tanks Provides Peace of Mind on those Colder Nights.



BEHIND TV SOTRAGE

TV's Swing Out to Provide Ample Storage



WINEGARD AIR 360

- Connect 2.0 4G LTE/WIFI Prepped
- Simple to Setup & Use
- Increased Range & Speed



C-PAP SHELVES

These bedside shelves have storage areas and an oversized top. The top was designed to be large enough to support C-PAP machines.



ONE TOUCH HYDRAULIC AUTO LEVEL

Gone are the days of working hard to make sure your unit is level. The one touch auto level system in Cameo is a breeze to use.



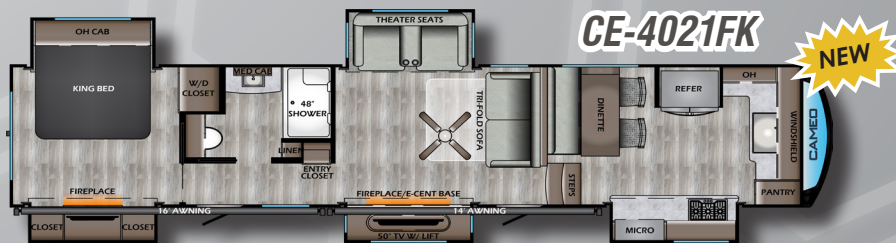
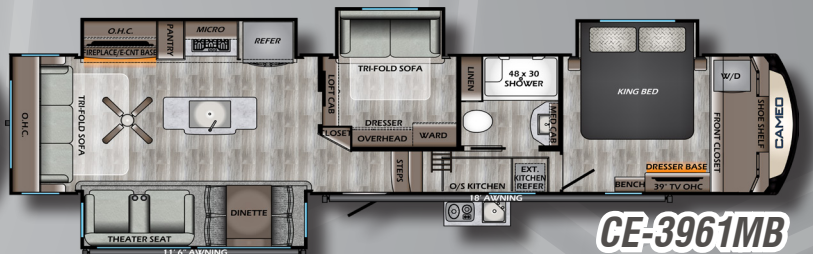
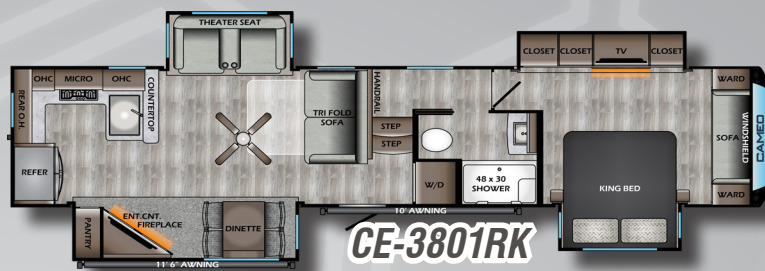
WASHER/DRYER PREP

Prepped for easy hookup of stackable washer and dryer.

DECOR OPTIONS



FLOORPLANS & SPECS



MODEL	CE-3201RL	CE-3701RL	CE-3801RK	CE-3891MK	CE-3921BR	CE-3961MB	CE-4021FK
DRY WEIGHT	11028	12246	12341	12368	12050	13106	12880
HITCH WEIGHT	2344	2562	2510	2350	2334	2504	2654
LENGTH	35' 7"	40' 1"	40' 3"	40' 3"	41' 8"	42' 6"	42' 0"
EXT. HEIGHT W/ A/C	13' 1"	13' 3"	13' 3"	13' 3"	13' 3"	13' 3"	13' 3"
FRESH WATER	64 Gal	64 Gal	60 Gal	64 Gal	64 Gal	60 Gal	64 Gal
BLACK WATER	44 Gal	44 Gal	44 Gal	44 Gal	44 Gal	44 Gal	38 Gal
GRAY WATER	44 Gal	44 Gal	89 Gal	84 Gal	89 Gal	89 Gal	76 Gal

*SEE WEBSITE FOR ADDITIONAL SPECS

STANDARDS AND OPTIONS

STANDARDS

CABINETS

- Hardwood Cabinet Doors
- Full Extension 70lb Ball Bearing Drawer Glides
- Hidden Hinges

EXTERIOR DESIGN

- Wireless Backup Camera Prep
- Aerodynamic Profile
- Increased Turning Radius
- LED Hitch Pin Light for Easy Hookup
- Automotive Windshield (VBM)
- Furrion S Observation System
- **Dual** Awnings
- **Dual** Scare Lights
- Winegard Air 360 Antenna

EXTERNAL DOCKING STATION

- Exterior Hot/Cold Shower
- City Water Hook Up
- Black Tank Flush System
- Cable TV & Satellite Hook-Ups (KeyTV)
- All Tank Pull Handles (VBM)
- Winterization Valve
- 110v Outlet

EXTERNAL STORAGE

- Slam Latch Baggage Doors w/ Magnetic Catches
- Pass Through Heated Storage
- Additional Utility Storage
- Bauer Keyed Alike System Throughout

FLOOR CONSTRUCTION

- 5/8" Floor Decking
- 3" Aluminum Framing - 11" on Center
- Seamless Residential Heat Ducts
- Enclosed & Heated Water Lines

WALL CONSTRUCTION

- 2" Laminated Sidewall
- High Gloss Gel Coat Fiberglass Exterior
- EGS Steel Backers for Cabinets

ROOF CONSTRUCTION

- Double Truss at each A/C
- 3/8" Roof Decking
- Full Walk-on Roof
- 5" Radius Metal Roof Cap

- One Piece Alpha Ply II Roof Material w/ 12 Yr Warranty
- **Dual** Attic Vents
- **Dual** Power Vent Fans

FRAME/TIRES/SUSPENSION

- 16" F-Range Tires w/ Full Size Spare
- 8 Lug Aluminum Rims
- 2" Self Adjusting Brakes
- 6 Point Hydraulic Auto Level
- 12" Frame (10" on 3201RL)
- 7,000lb Axles
- **Dual** MORryde Step Above (VBM)
- 2" Receiver Hitch
- MORryde CRE 3000 Suspension w/ Wet Bolt
- Roto Flex Pin Box

TANKS/LP GAS SYSTEM

- 60 Gallon Fresh Water
- 84 Gallon Grey Water (VBM)
- 42 Gallon Black Water (VBM)
- (2) 30 lb LP Bottles w/ Auto Change
- Tank Heating Pads

POWER

- **Dual** Zamp Solar Prep (Roof & Sidewall)
- Progressive 75 Amp/12V DC Converter
- 50 Amp Detachable Power Cord
- Dual Battery Box w/ Disconnect
- 110V Exterior Receptacle
- Battery Disconnect Switch
- 1,200 Watt Inverter w/ Residential Refer
- Generator Prep

HEAT & A/C

- Seamless One Piece in-Floor Duct
- 35,000 BTU Furnace
- Heat & A/C Duct in Bathroom
- 15,000 BTU A/C in Living Room & Kitchen
- 15,000 BTU A/C in Bedroom & Bathroom

APPLIANCES

- 21 ft³ Residential Refrigerator
- 18 ft³ Gas/Electric Refrigerator
- 30" OTR Microwave w/ Exhaust Fan
- 10 Gallon Gas/Electric DSI Water Heater
- Gourmet Kitchen

INTERIOR/LIGHTING

- 4" Round LED Accent Lights
- Pendant Kitchen Light w/ Ceiling Accents
- Decorative Dinette Fixture
- **Dual** Dimmer Switches

KITCHEN

- Solid Surface Countertop
- Stainless Steel Sink Basin
- Pots & Pans Storage
- Large Residential Pantry
- High Rise Faucet w/ Pull Out Spray Hose
- Max Air Fan
- **Dual** Pullout Pantry Drawers

LIVING ROOM

- 5 Function Tru-Sit Heated & Massage Theater Seating w/ Drink Holders
- **Dual** USB Ports
- **Dual** Wireless Charging Stations
- **Dual** HDTV's (Bedroom & Living Area)
- **Dual** Fireplaces (Bedroom & Living Area)

BEDROOM

- King Bed
- Exclusive Dual Opposing Bedroom Slides - "Master Suites" (3701RL, 3801RK)
- Spacious Walk in Closet w/ Built in Shelving
- Closet Prepped for W/D (VBM)
- **Dual** C-Pap Shelves

BATHROOM

- 48" Shower w/ Glass Doors
- Porcelain Foot Flush Toilet
- Large Mirrored Medicine Cabinet
- Domed Skylight in Shower
- Large Linen Closet

• TWICE IS NICE PACKAGE

*VBM - Varies by Model



1-YEAR / LIMITED BASE WARRANTY
+
3-YEAR / LIMITED STRUCTURAL WARRANTY

www.crossroadsrv.com • 1140 W. Lake St Topeka, IN 46571 • (260) 593 - 3850

DISCLAIMER: Product information is as accurate as possible as of the date of publication of this brochure. All features, floor plans, and specifications in this brochure are subject to change without notice. Please also consult CrossRoads' web site at www.crossroadsrv.com for more current product information and specifications. Tow Vehicle Disclaimer. CAUTION: Owners of CrossRoads recreational vehicles are solely responsible for the selection and proper use of tow vehicles. All customers should consult with a motor vehicle manufacturer or their dealer concerning the purchase and use of suitable tow vehicles for CrossRoads products. CrossRoads disclaims any liability or damages suffered as a result of the selection, operation, use or misuse of a tow vehicle. CROSSROADS' LIMITED WARRANTY DOES NOT COVER DAMAGE TO THE RECREATIONAL VEHICLE OR THE TOW VEHICLE AS A RESULT OF THE SELECTION, OPERATION, USE OR MISUSE OF THE TOW VEHICLE. REFERENCE CROSSROADS RV COMPANY OWNERS MANUAL FOR LIMITED WARRANTY DETAILS. *Length is defined as the distance from the centerline of hitch pin/coupler to rear bumper of trailer.



Sept. 2019