

# FLAGSTAFF

TRAVEL TRAILERS

YOUR LIGHT-WEIGHT SPECIALIST



SHAMROCKS, MICRO LITES, SUPER LITES & CLASSIC





# Over 40 Years of Excellence

**FROM HUMBLE BEGINNINGS, FLAGSTAFF HAS EMERGED AS AN INDUSTRY LEADER IN THE MANUFACTURING OF LIGHT WEIGHT TRAVEL TRAILERS, FIFTH WHEELS AND CAMPING TRAILERS.**

Located in Millersburg, IN since 1974, Flagstaff has been supported by this community and the local families residing there. These families have helped provide the hundreds of workers that have brought their dedication to quality workmanship, respect for their fellow workers and a commitment to an uncompromising work ethic to make a major contribution to this company's success. Founded on the principle of providing superior value and service while remaining in tune with customer's preferences, Flagstaff has become the ultimate luxury product in the light weight trailer market, proudly showcasing more innovative floor plans, appealing features and refined interior appointments than any others in its class.





**TODAY, FLAGSTAFF REMAINS COMMITTED TO INSURING THAT OUR CUSTOMERS ENJOY THEIR CAMPING EXPERIENCES.**

Through the utilization of our experienced work force, “state of the art” lamination facility, modern production plants and detailed assembly processes our aim is to continue to provide our customers with the best built product possible at an unmatched value.





FLAGSTAFF

# Shamrock

**A VALUE THAT'LL MAKE YOU JUMP!** We have a trailer just for you. Whether you are interested in the expanded interior space provided by the spacious drop down bunks with heated mattresses or the ability to bring an ATV along with the feel of a traditional trailer, the Flagstaff Shamrock will deliver the quality and amenities you expect. Flagstaff brings the necessities of residential living on the campsite

MODEL NO.  
**235S**



Standard Champagne Exterior



Optional White Exterior

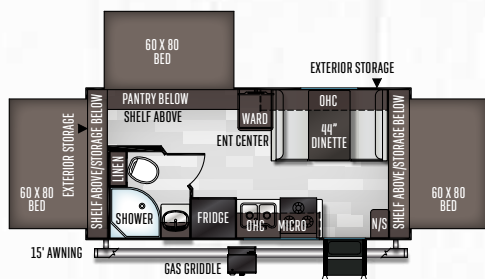


AMERICAN MAPLE / OPAL

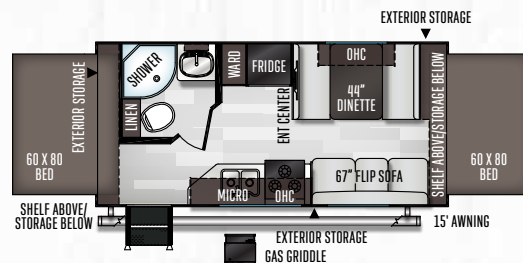




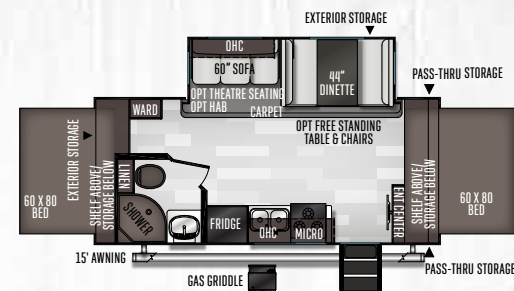
183



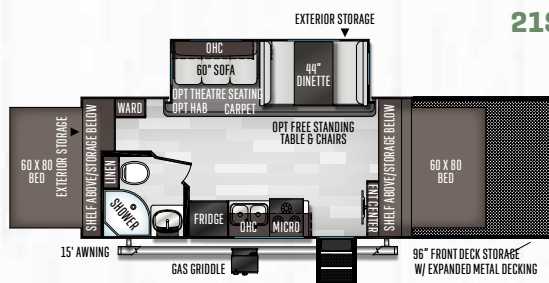
19



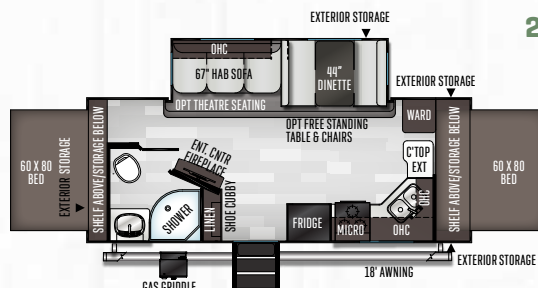
21SS



21SSL

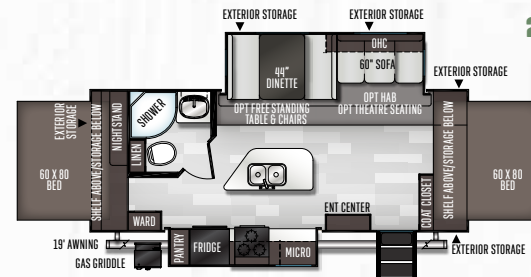


23FK

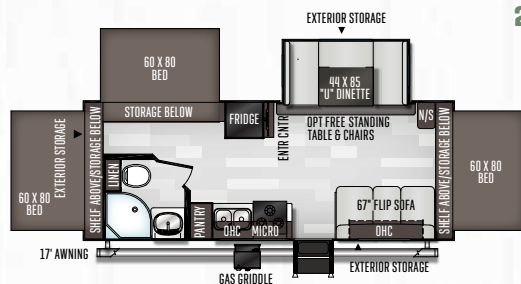


NEW

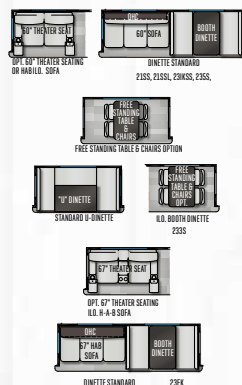
23IKSS



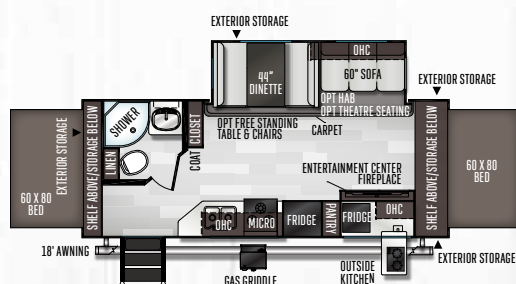
233S



## SLIDE DETAILS



235S



MODEL NUMBER	183	19	21SS	21SSL	23IKSS	233S	23FK	235S
UNLOADED VEHICLE WEIGHT *	4179	4056	4985	5882	5640	5063	5528	5418
BASE DRY HITCH WEIGHT	480	448	548	480	688	708	720	725
BASE DRY AXLE WEIGHT	3661	3570	4399	5264	4914	4317	4770	4655
CARGO CAPACITY	1581	1672	1563	1598	1208	1645	1352	1467
LENGTH (HITCH TO BUMPER)	21' 2"	21' 2"	22' 10"	32' 2"	24' 10"	24' 10"	24' 10"	24' 10"
TRAILER LENGTH (OPEN)	25' 7"	25' 7"	27' 2"	36' 4"	29' 7"	29' 7"	29' 7"	29' 7"
WIDTH	96"	96"	96"	96"	96"	96"	96"	96"
HEIGHT WITH A/C	125"	125"	130"	134"	130"	125"	130"	130"
INTERIOR HEIGHT	80"	80"	80"	80"	80"	80"	80"	80"
FRESH WATER CAPACITY	58 gal	58 gal	58 gal	58 gal	58 gal	58 gal	58 gal	58 gal
GRAY WATER CAPACITY	30 gal	30 gal	30 gal	30gal	30 gal	30 gal	30 gal	30 gal
BLACK WATER CAPACITY	30 gal	30 gal	30 gal	30gal	30 gal	30 gal	30 gal	30 gal

The Unloaded Vehicle Weight (UVW) listed represents the weight of one trailer with that model's standard equipment including the content of specified option packages. \* See back cover for further specification definitions.



# Shamrock

## STANDARDS & OPTIONS

MODELS	S	MODELS	S	MODELS	S
<b>STANDARD PACKAGES</b>	<b>PKG. G</b>				
Automotive Grade Easy Latch Bunk Latch/Lock	S	Microwave Oven	S	Monitor Panel Switch Station	S
Aluminum Cage Dinette Base	S	Double Door Auto Gas/Elec. Large Refrigerator	S	55 Amp Converter With Charger	S
6 Sided Aluminum Cage Construction	S	Quick Recovery Water Heater w/ Interior Gas and Electric Switches	S	Battery Disconnect Switch	S
Vacuum Laminated 1 Piece Roof and Walls	S	Power Awning With Adjustable Rain Dump and LED Lighting	S	Ceiling LED 12 Volt Interior Lighting	S
Enclosed Underbelly	S	Black Tank Flush	S	Bunk Fan/Light Combination with Each Bed End	S
4 Frame Mounted Stabilizer Jacks	S	Spare Tire W/ Carrier and Cover	S	Mounted 24" LCD TV	S*
Torsion Axle, Rubber-Ryde Suspension	S	Tinted Bonded Frameless Windows	S	32" LCD TV 21SS, 21SSL, 23IKSS	S*
Nitro Filled Radial Tires	S			39" LCD TV 23FK	S*
Polished Alloy Wheels	S	<b>INTERIOR FEATURES</b>		43" LCD TV 23SS	S*
LED TV W/ Multi-directional Antenna	S	Slatewood Interior	S	MP3 Player Hook-Up	S
WiFi Ranger WiFi Booster Sky 4	S	American Maple Interior	O	Premium Soundbar (Where applicable)	S*
Prewire for Back Up Camera and Solar	S	Decorative Slide Out Fascia	S	Decorative Valances	S
Multi Zone Stereo W/ DVD/CD/AM/FM and Bluetooth Control	S	Solid Wood Cabinet Doors and Drawer Fronts	S	Heated Theater Seating ILO Sofa (Opt. 21SS, 21SSL, 23FK	
Outside Speakers	S	Screwed and Glued Wood Cabinetry	S	23IKSS, 23SS Only)	O*
13,500 BTU Roof AC	S	Residential Full Extension Metal Drawer Guides	S	Deluxe Tri-Fold Sleeper Sofa (Per floorplan)	O*
Night Shades	S	Engineered Mold and Mildew Resistant Floor Covering	S	Family Dinette (Per floorplan)	S*
Square Bunk Ends W/ Attached Boots & Aircraft Cable		Ducted 35,000 BTU Furnace	S	Spacious King-U-Style Dinette (233S)	S*
Rated at 900 lbs Capacity	S	13,500 BTU Ducted Air	S	Free Standing Table and Chairs (Per floorplan)	O*
Double Bowl Undermount Kitchen Sink	S	15,000 BTU A/C	O	Double Door Auto Gas / Elect. Refrigerator	S
Solid Surface Kitchen Countertops	S	Carbon Monoxide Detector	S	3 Burner High Output Gas Range w/ Glass Stove Top Cover	S
Recessed Cooktop W/ Flush Mount Cover	S	12 Volt Power Plug Hook-up	S	Raised Panel Refrigerator Front	S
		CSA (Canadian Standards)	O	Gas Oven	S

STANDARDS & OPTIONS ARE SUBJECT TO CHANGE.





MODELS	S
Counter Top Extension (Per floorplan)	S*
Water-Pur Filtration System	S
Shower Miser Water Saver System	S
Tub Surround	S
Radius Glass Door Shower (Per floorplan)	S*
Bathroom Skylight	S
Water Heater By-Pass Kit	S
Foot Flush Toilets	S
Two Maxxair® Ventilation Fan and Vent Cover	S
Heated Mattress	S*
Fireplace (23FK and 235S)	S*
WiFi Ranger WiFi Booster Sky 4	S
<b>EXTERIOR FEATURES</b>	
Magnetic Compartment Door Catches	S
Fully Aluminum Frame (Floor, Sidewall, & Roof)	S
Insulation Factors R-7 Side Wall, R-12 Floor and R-14 Ceiling	S
Radiant Foil Insulated Underbelly and Slide-out floors	S
Radius Roofs w/ Interior Vaulted Ceilings	S
Vinyl / Rubber Composite Roofing Membrane	S
T V Antenna w/ Cable & Satellite Hook-Up	S
Rear Observation Camera Prep w/ Molded Mounting Plate	S

MODELS	S
Roof Mount Solar Prep	O
Ground Solar Prep	S
Laminated Champagne Colored Fiberglass Sidewalls	S
White Two Tone Laminated Fiberglass Sidewalls w/ Graphics Package	O
Distinctive Black Exterior Trim	S
Electric Slide-Out (All Slide Out Models)	S
Lower Front Diamond Plate Panel	S
Easy to Reach Lockable Bed Latch System	S
Outside Griddle w/LP Hook Up	S
Awning Slide Topper	O
Radius Entrance/Screen Door	S
Friction Hinge Entrance Door	S
Large Assist Grab Handles	S
Thermopane Windows	O
Outside Shower	S
Outside Antifreeze Stations	S
Electronically Controlled Heated Holding Tanks	O
Black Water Flush	S
360 Siphon Vent Cap on all black tanks	S
Surface Coated Steel I-Beam Frame	S
8' X 8' Front Storage Deck: 1300 LBS. Max Capacity (21SSL Only)	S*
Fuel Station with 18 Gallon Capacity (Gasoline Only) (Opt. 21SSL Only)	O

MODELS	S
1/2 Sliding Storage Tray ( Opt. 21SS, 21SSL)	O
Toylok Mounted Locking System (21SSL Only)	S*
Easy Lube Axles and Nev-R Adjust Brakes	S
Radial Tires w/ Nitro Fill	S
Strut assist fold out Entry Steps (183, 19, 233S, Without strut assist)	S*
Off Road Package (Includes: 15" Off Road Tires and Aluminum Wheels 21SSL Only)	S*
2" Hitch Receiver	S
Power Tongue Jack	S

S = SHAMROCK, S = STANDARD, O = OPTIONAL, -- NOT AVAILABLE, \* = SELECTED MODELS



FLAGSTAFF

# Micro Lite

## TOWING A TRAILER DOESN'T REQUIRE A TRUCK ANYMORE.

When towing size and weight are your focus, you will find that these specially designed Micro Lite models offer flexible floor plans that provide you with more comfort and amenities than you would expect — all within the towing capacity of many SUV's and mini vans.

MODEL NO.

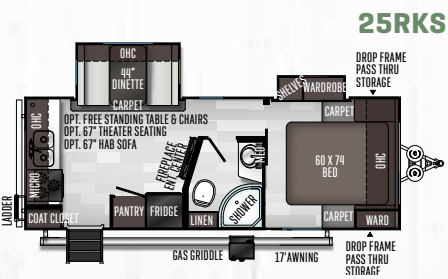
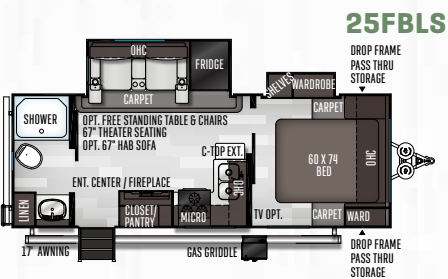
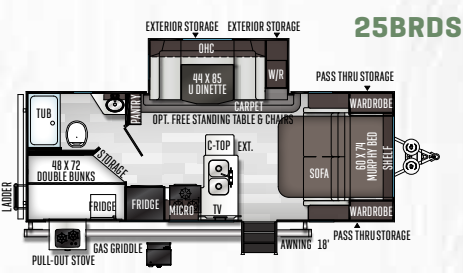
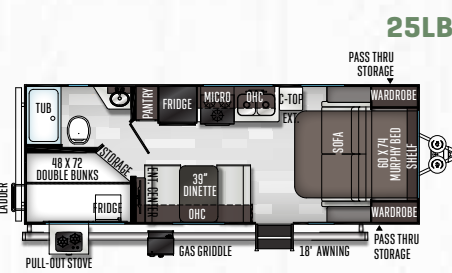
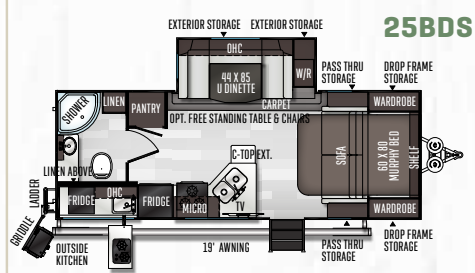
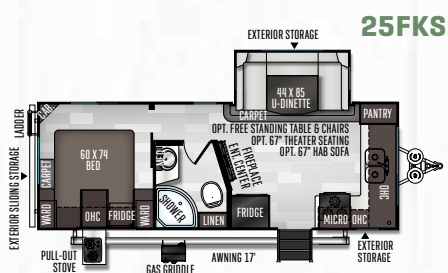
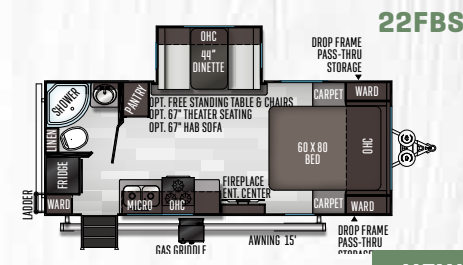
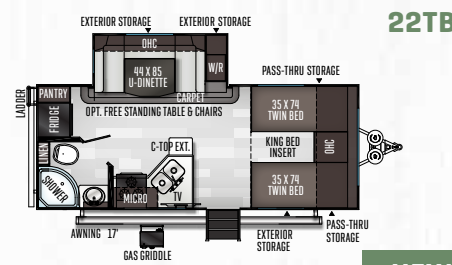
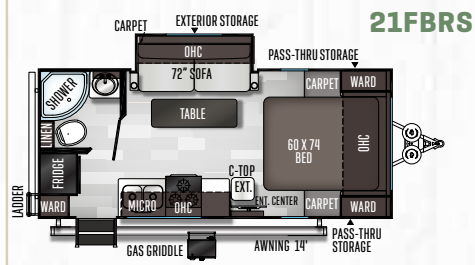
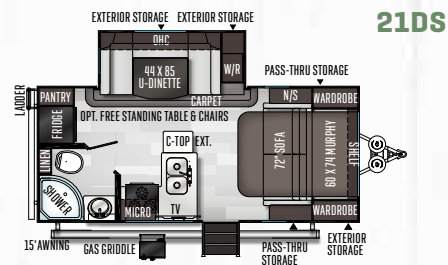
**25FKS**



SLATEWOOD / DIAMOND







## SLIDE DETAILS

[illegible]

The Unloaded Vehicle Weight (UVW) listed represents the weight of one trailer with that model's standard equipment including the content of specified option packages. \* See back cover for further specification definitions.



# Micro Lite

## STANDARDS & OPTIONS

MODELS	ML	MODELS	ML	MODELS	ML
<b>STANDARD PACKAGES</b>	<b>PKG. D</b>				
Aluminum Cage Dinette Base	S	Double Door Auto Gas/Elec. Large Refrigerator	S	Monitor Panel Switch Station	S
6 Sided Aluminum Cage Construction	S	Quick Recovery Water Heater w/ Interior Gas and Electric Switches	S	55 Amp Converter With Charger	S
Vacuum Laminated 1 Piece Roof and Walls	S	Fold In Steps. Double or Triple Entry Step Per Floorplan	S	Battery Disconnect Switch	S
5/8" Plywood Tongue and Groove Sub Floor	S	Black Tank Flush	S	Recessed Ceiling LED 12 Volt Interior Lighting	S
Enclosed Underbelly	S	Spare Tire W/ Carrier and Cover	S	Mounted 24" LCD TV	S*
4 Frame Mounted Stabilizer Jacks	S	Tinted Bonded Frameless Windows	S	Bedroom Mounted 24" LCD TV, 25FKS, 25FBLS, 25RKS Only]	0*
Torsion Axle, Rubber-Ryde Suspension	S	Outside Griddle cook top	S	Mounted 32" LCD TV, 21DS, 22TB, 22FBS, 25FKS, 25BDS, 25LB, 25BRDS, 25FBLS, 25RKS	S*
Nitro Filled Radial Tires	S	Automotive Front Windshield	S	Digital AM/FM/CD/DVD w/ Remote	S
Polished Alloy Wheels	S			MP3 Player Hook-Up	S
LED TV W/ Multi-directional Antenna	S	<b>INTERIOR FEATURES &amp; OPTIONS</b>		Premium Soundbar (Where applicable)	S*
Prewire for Back Up Camera and Solar	S	Slatewood Interior	S	Decorative Valances	S
Multi Zone Stereo W/ DVD/CD/AM/FM and Bluetooth Control	S	American Maple Interior	0	Heated Theater Seating w/USB Ports Std, 25FBLS	S*
WIFI Ranger WIFI Booster Sky 4	S	Decorative Slide Out Fascia	S	Heated Theater Seating w/USB Ports ILO Dinette (Opt. 22FBS, 25FKS, 25RKS )	0*
Outside Speakers	S	Screwed and Glued Wood Cabinetry	S	Deluxe Tri-Fold Sleeper Sofa (Per floorplan)	0*
Maxxair® Ventilation Fan and Vent Cover	S	Hardwood Cabinet Doors and Drawer Fronts	S	Family Dinette (Per floorplan)	S*
13,500 BTU Roof AC	S	Residential Full Extension Metal Drawer Guides	S	Spacious King-U-Style Dinette (Std. 21DS, 22TB, 25FKS, 25BDS, 25BRDS)	S*
Night Shades	S	Engineered Mold and Mildew Resistant Floor Covering	S	Free Standing High Pressure Laminated Table	S*
Double Bowl Undermount Kitchen Sink	S	Ducted Furnace (20,000BTU on 21' & 35,000 on over 21' trailers)	S	Free Standing Table and Chairs (Per floorplan )	0*
Solid Surface Kitchen Countertops	S	13,500 BTU Ducted Air	S	Double Door Auto Gas / Elect. Refrigerator	S
Roller Bearing Drawer Guides	S	15,000 BTU A/C	0	Shaker Style Refrigerator Panel on Slatewood,	
Recessed Cooktop W/ Flush Mount Cover	S	Carbon Monoxide Detector	S	Raised Panel Refrigerator Front	S
Microwave Oven	S	12 Volt Power Plug Hook-up	S		
		CSA Standards (Canadian Standards)	0		

STANDARDS & OPTIONS ARE SUBJECT TO CHANGE.



## MODELS

3 Burner High Output Gas Range w/ Glass Stove Top Cover	S
Gas Oven	S
Under Mount Double Bowl Kitchen Sink w/ Sink Cover	S
Counter Top Extension (Per floorplan)	S*
Water-Pur Filtration System	S
Shower Miser Water Saver	S
Tub Surround	S
Radius Glass Door Shower (Per floorplan)	S*
Night Shades	S
Bathroom Skylight	S
110 DSI Gas/Electric Six Gallon "Quick Recovery"	
Water Heater w/ By-Pass Kit	S
Foot Flush Toilets	S
Extra Maxxair® Ventilation Fan and Vent Cover	O
Murphy Bed w/ Under Sofa Storage System and Outside Access	
for Unmatched Floor Plan Flexibility (Per floorplan)	S
Heated Mattress	S
Fireplace [2205S, 2506S, 2511S, 2512S]	S

## EXTERIOR FEATURES & OPTIONS

Magnetic Compartment Door Catches	S
Fully Aluminum Frame (Floor, Sidewall, & Roof)	S

## MODELS

Insulation Factors R-7 Side Wall, R-12 Floor and R-14 Ceiling	S
Radiant Foil Insulated Underbelly, Fronts and Slide-out Floors	S
Radius Roofs w/ Interior Vaulted Ceilings	S
Vinyl / Rubber Composite Roofing Membrane	S
T V Antenna w/ Cable & Satellite Hook-Up	S
Rear Observation Camera Prep w/ Molded Mounting Plate	S
Rear Ladder	S
Laminated Champagne Colored Fiberglass Sidewalls	S
White Two Tone Laminated Fiberglass Sidewalls w/ Graphics Package	O
Distinctive Black Exterior Trim	S
Electric Slide-Out (All Slide Out Models)	S
Lower Front Diamond Plate Panel	S
Bike Rack Ladder Attachment	O
Tongue Mount Bike Rack	O
Power Awning With Adjustable Rain Dump and LED Lighting	S
Awning Slide Topper	O
Entrance/Screen Door	S
Friction Hinge Entrance Door	S
Large Assist Grab Handles	S
Radius Corner Exterior Door	S
Thermopane Windows	O
Outside Griddle Prep	S

## MODELS

Two-30 Lb Gas Bottles	S
Molded Bottle Cover	S
Surface Coated Steel I-Beam Frame	S
Power Tongue Jack	S
2" Hitch Receiver	S
Easy Lube Axles and Nev-R Adjust Brakes	S
Radial Tires w/ Nitro Fill	S
Outside Shower	S
Outside Antifreeze Stations	S
360 Siphon Vent Cap on all black tanks	S
Black Water Flush	S
Roof Mount Solar Prep	O
Ground Mount Solar Prep	S

ML = MICRO LITE, S = STANDARD, O = OPTIONAL, -- NOT AVAILABLE, \* = SELECTED MODELS



FLAGSTAFF

# Super Lite Travel Trailers

**YOU'LL LOVE WHAT YOU FIND IN OUR FLOOR PLANS.** Our trailers are packed full of quality features in order to bring to you one of the best values in the light weight market. There are spacious flush floor slides, comfortable stylish sofas and wide dinettes with easily adjustable legs. Our Super Lite series offers lots of room and amenities while still being a 1/2 ton towable Travel Trailer.

MODEL NO.  
**26FKBS**



Standard Champagne Exterior

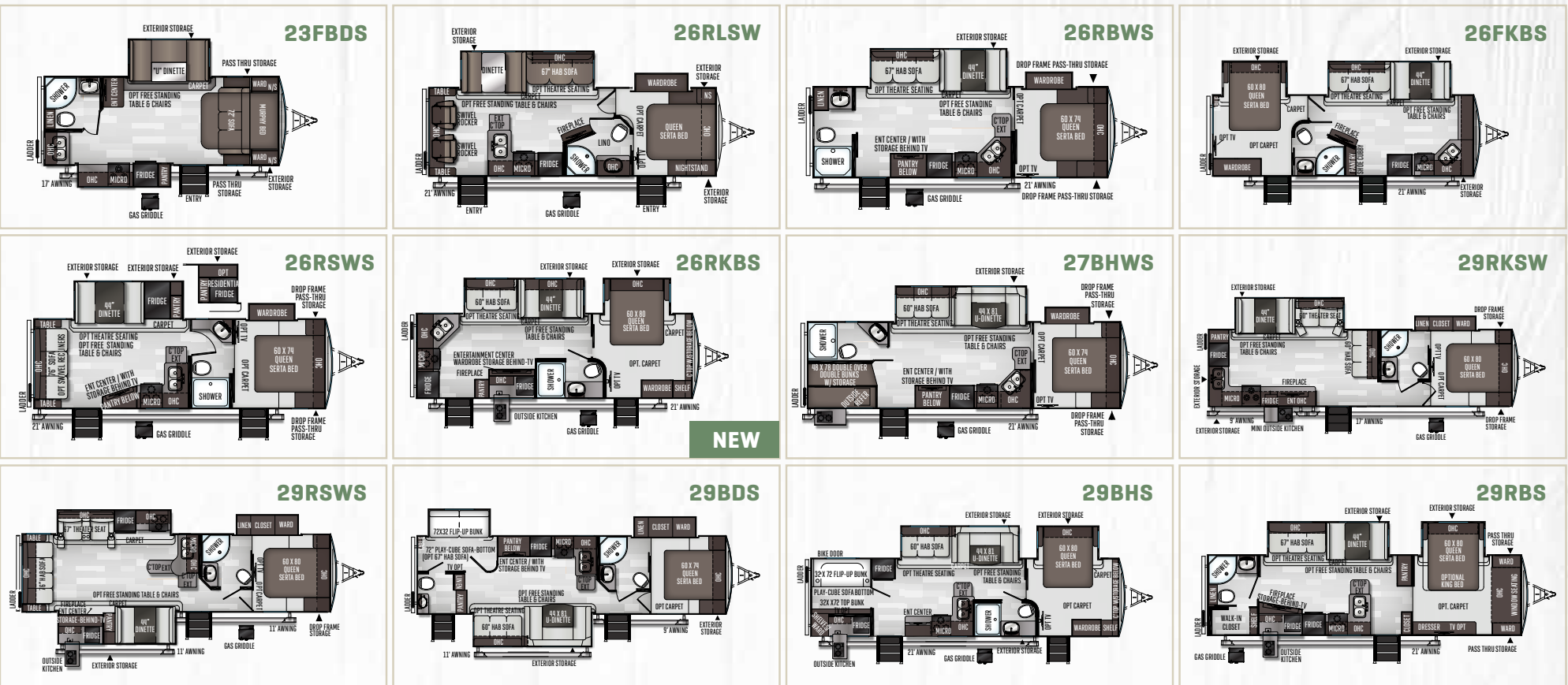


Optional White Exterior

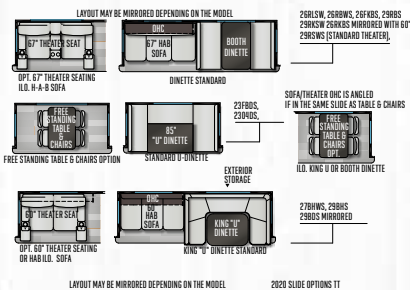


SLATEWOOD / DIAMOND





## SLIDE OPTIONS



MODEL NUMBER	23FBDS	26RLSW	26RBWS	26FKBS	26RSWS	26RKBS	27BHWS	29RKSW	29RSWS	29BDS	29BHS	29RBS
UNLOADED VEHICLE WEIGHT*	5654	6350	6158	6608	6229	6988	6740	7610	7981	7854	7605	7854
BASE DRY HITCH WEIGHT	690	782	908	796	738	796	844	920	900	810	1038	952
BASE DRY AXLE WEIGHT	4905	5509	5191	5753	5432	6133	5837	6631	7022	6985	6508	6843
CARGO CAPACITY	2036	2432	1790	2188	2509	1808	2104	2110	1719	1756	2233	1898
LENGTH (HITCH TO BUMPER)	25'3"	29'9"	29'9"	29'11"	29'9"	29'11"	32'10"	35'2"	35'2"	35'2"	35'2"	35'2"
WIDTH	96"	96"	96"	96"	96"	96"	96"	96"	96"	96"	96"	96"
HEIGHT (W/ AC)	134"	134"	134"	134"	134"	134"	134"	134"	134"	134"	134"	134"
FRESH WATER CAPACITY	60 gal	60 gal	60 gal	60 gal	60 gal	60 gal	60 gal	60 gal	60 gal	60 gal	60 gal	60 gal
GRAY WATER CAPACITY	45 gal	45 gal	90 gal	90 gal	45 gal	90 gal	90 gal	90 gal	45 gal	45 gal	45 gal	90 gal
BLACK WATER CAPACITY	45 gal	45 gal	45 gal	45 gal	45 gal	45 gal	45 gal	45 gal	45 gal	90 gal	45 gal	45 gal

The Unloaded Vehicle Weight (UVW) listed represents the weight of one trailer with that model's standard equipment including the content of specified option packages.

\* See back cover for further specification definitions.



# Super Lite Travel Trailers

## STANDARDS & OPTIONS

MODELS	TT	MODELS	TT	MODELS	TT
<b>STANDARD PACKAGES INCLUDE:</b>	<b>PKG. F</b>	Double Door Auto Gas/Elec. Large Refrigerator	S	Engineered Mold and Mildew Resistant Floor Covering	S
Aluminum Bed and Dinette Base	S	Serta Memory Foam Mattress	S	Bedroom Carpet (N/A 23FBDS)	O
6 Sided Aluminum Cage Construction	S	Quick Recovery Auto Ignition Gas/Electric Water Heater	S	Floor Ducted 35,000 BTU Furnace,	S
Vacuum Laminated 1 Piece Roof and Walls	S	Shower Miser Water Saver System	S	50 Amp Service w/ 2nd A/C Prep (N/A 23FBDS)	S*
Enclosed Underbelly	S	Black Tank Flush	S	15,000 BTU A/C	O
Power Awning w/ Adjustable Rain Dump and LED Light Strip	S	360 Siphon Black Water Vent	S	2nd Roof A/C w/ Chill Chaser Heat Strip and 50 Amp Service	
Torsion Axle, Rubber-Ryde Suspension	S	Spare Tire Carrier and Cover	S	and Digital Dual Thermostat Control (NA23FBDS)	O*
Nitro Filled Radial Tires	S	Outside Griddle w/LP Hook up	S	Fireplace (Std. 26RLSW, 26FKS, 26RKBS, 29RKSW, 29RSWS, 29RBS)	S*
Polished Alloy Wheels	S	Tinted Bonded Frameless Windows	S	Carbon Monoxide Detector	S
LED TV w/ Multi-directional Antenna	S	Automotive Windshield	S	12 Volt Power Plug Hook-up	S
Wifi Ranger Wifi Booster Sky 4	S	Rear Observation Camera Prep w/ Molded Mounting Plate	S	CSA (Canadian Code)	O
Multi Zone Stereo w/ DVD/CD/AM/FM / MP3 Player Hook Up		Strut Assist Fold In Step	S	Monitor Panel Switch Station	S
and Bluetooth Control	S	Radiant Foil Insulated Underbelly, Fronts and Slide-out Floors	S	55 Amp Converter With Charger	S
Slam Latch Baggage Doors	S			Battery Disconnect Switch	S
Magnetic Door Holds	S	<b>INTERIOR FEATURES</b>		Ground Solar Panel Prep	S
Outside Speakers	S	Slatewood Interior	S	Roof Mount Solar Prep	O
13,500 BTU Ducted Roof A/C	S	American Maple Interior	O	Ceiling LED 12 Volt Interior Lighting	S
Under Mount Double Bowl Kitchen Sink w/ Residential Style Faucet	S	Screwed and Glued Wood Cabinetry	S	Bedroom Mounted 24" LCD TV (NA 23FBDS)	O*
Solid Surface Kitchen Countertops	S	Residential Full Extension Metal Drawer Guides	S	LCD TV w/ Premium Soundbar	S
Recessed 3 Burner Cooktop and Large Oven w/ Flush Mount Cover	S	Hardwood Cabinet Doors and Drawer Fronts	S	Designer Valances	S
Roller Bearing Drawer Guides	S	Decorative Slide Out Fascia	S	Day/Night Shades	S
Microwave Oven	S				

STANDARDS & OPTIONS ARE SUBJECT TO CHANGE.



MODELS	TT
Swivel Rocker Chair (Per Floor Plan)	S*
Heated Theatre Seating w/ Cup Holders and Removable Tables (Per Floorplan)	S* / O*
Deluxe Tri-Fold Sleeper Sofa (Per Floor Plan)	S*
Spacious King-U-Style Dinette (Std. 23FBDS, 27BHWS 29BDS, 29BHS)	S*
Free Standing High Pressure Laminated Table with Swing Level Legs	S*
Free Standing Table and Chairs	O*
Decorative Wood Refrigerator Panels	S*
Residential Sink Cover	S
Counter Top Extension (Per Floor Plan)	S*
Water-Pur Filtration System	S
Radius Glass Door Shower	S*
Large Shower w/ Sliding Glass Door (Std. 26RBWS, 27BHWS, 29BHS, 29RBS)	S*
Bathroom Skylight	S
Water Heater By-Pass Kit	S
Foot Flush Toilets	S
Maxxair® Ventilation Fan and Vent Cover, Bathroom	S

MODELS	TT
Extra Maxxair® Ventilation Fan and Vent Cover	O
Murphy Bed w/ Under Sofa Storage System and Outside Access for Unmatched Floor Plan Flexibility (Std. 23FBDS)	S*
<b>EXTERIOR FEATURES</b>	
Fully Aluminum Frame (Floor, Sidewall, & Roof)	S
Insulation Factors R-7 Side Wall, R-12 Floor and R-14 Ceiling	S
Radius Roofs w/ Interior Vaulted Ceilings	S
Vinyl / Rubber Composite Roofing Membrane	S
Laminated Champagne Colored Fiberglass Sidewalls	S
Laminated White / two toned Fiberglass Sidewalls	O
Electric Slide-Out (All Slide Out Models)	S
Decorative Frame Skirting	S
T V Antenna w/ Cable & Satellite Hook-Up	S
Rear Ladder	S
Bike Rack Ladder Attachment	O
Tongue Mount Bike Rack	O
Awning Slide Topper	O
30" Primary Entrance/Screen Door, Per floor plan	S

MODELS	TT
Friction Hinge Entrance Door	S
Large Assist Grab Handles	S
Lighted Entry Step and Scare Light	S
Thermopane Windows	O
Large Dinette Picture Window	S*
Outside Shower	S
Outside Antifreeze Stations	S
Electronically Controlled Heated Holding Tanks	S
Two-30 Lb Gas Bottles	S
Molded Bottle Cover	S
Surface Coated Steel I-Beam Frame	S
Power Tongue Jack	S
Power Stabilizer Jacks	O
2" Hitch Receiver	S
Easy Lube Axles and Nev-R Adjust Brakes	S

TT = SUPER LITE TRAVEL TRAILER, S = STANDARD, O = OPTIONAL, -- NOT AVAILABLE, \* = SELECTED MODELS



FLAGSTAFF

# Classic

BY FLAGSTAFF

**BEAUTIFUL SPACIOUS INTERIORS COME STANDARD.** The Classic series has many outstanding features to enhance your camping experience. The open floorplans and generous storage space allows extra room for those extra things you want to bring along. Sleeping on the comfortable Serta bed, you'll forget you were in the great outdoors. The spacious interior and picturesque view through the many windows enable you to experience your surroundings in the comfort of your Classic travel trailer.

MODEL NO.  
**832FLSB**



Standard Champagne Exterior

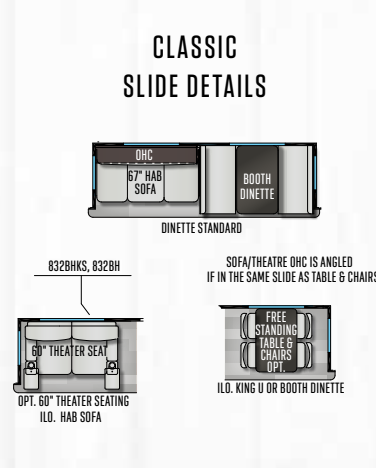
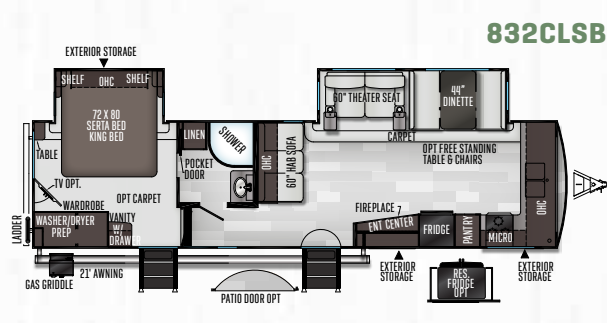
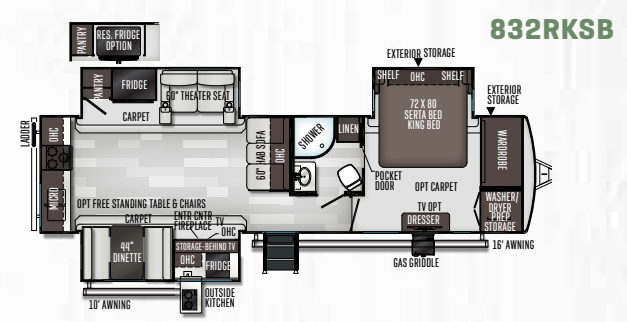
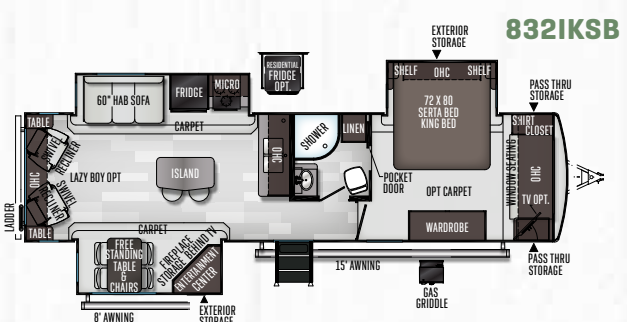
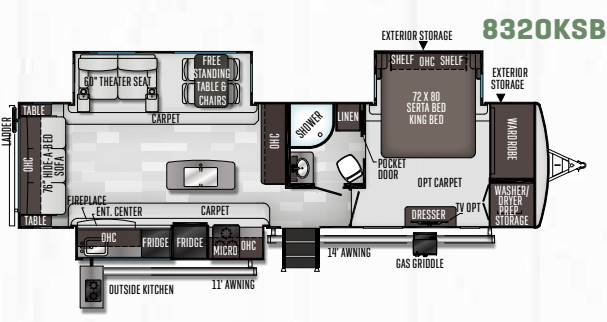
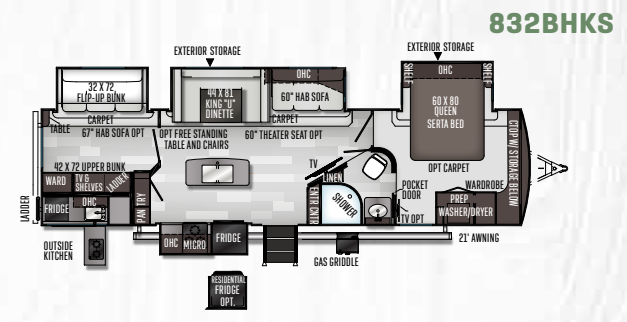
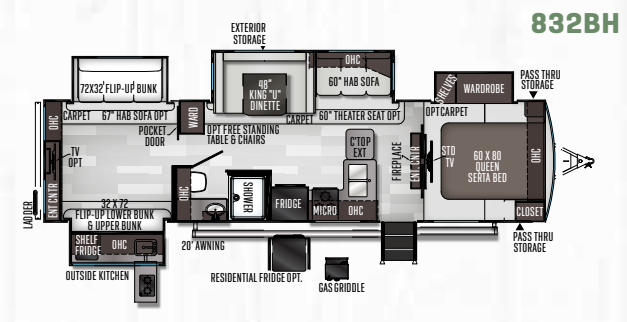
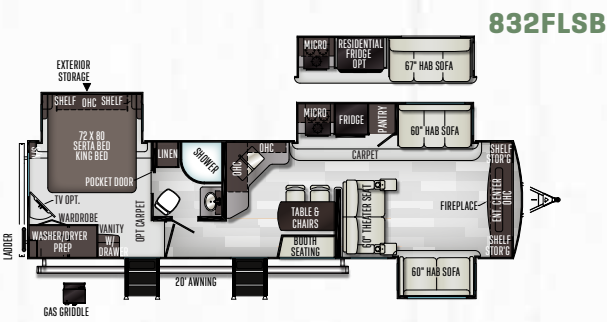


Optional White Exterior



AMERICAN MAPLE / OPAL





MODEL NUMBER	832FLSB	832BH	832BHKS	8320KSB	832IKSB	832RKSBS	832CLSB
UNLOADED VEHICLE WEIGHT*	9254	9403	9387	9445	8839	9444	8327
BASE DRY HITCH WEIGHT	1115	1033	1314	1258	1130	1130	1057
BASE DRY AXLE WEIGHT	8080	8311	8014	8128	7650	8255	7211
CARGO CARRYING CAPACITY	1861	1630	1927	1813	2291	1686	2730
LENGTH - (BUMPER TO HITCH FRONT)	36' 8"	36' 8"	36' 8"	36' 8"	36' 8"	36' 8"	36' 8"
WIDTH	96"	96"	96"	96"	96"	96"	96"
HEIGHT W/ A/C	139"	139"	139"	139"	139"	139"	139"
INTERIOR HEIGHT	83"	83"	83"	83"	83"	83"	83"
FRESH WATER CAPACITY	60 gal	60 gal	60 gal	60 gal	60 gal	60 gal	60 gal
GRAY WATER CAPACITY	110 gal	98 gal	138 gal	128 gal	70 gal	100 gal	120 gal
BLACK WATER CAPACITY	40 gal	40 gal	40 gal	40 gal	40 gal	40 gal	40 gal

The Unloaded Vehicle Weight (UJVW) listed represents the weight of one trailer with that model's standard equipment including the content of specified option packages. \* See back cover for further specification definitions.

# Classic by Flagstaff

## STANDARDS & OPTIONS

MODELS	C	MODELS	C	MODELS	C
<b>STANDARD PACKAGES INCLUDE:</b>	<b>PKG. B</b>	LCD TV With Upgraded Sound Bar Speaker System and Multi-directional Antenna	S	Engineered Mold and Mildew Resistant Floor Covering	S
High Gloss Front Cap	S	Multi Zone Stereo w/ DVD/CD/Blue Ray/ AM/FM and Bluetooth Control	S	Bedroom Carpet	O
Automotive Windshield (NA 832OKSB, 832RKSB)	S*	Touch Button Control Panel w/ App Control	S	35K BTU Ducted Furnace	S
Fiberglass Exterior with Glossy Finish	S	Thermostatically Controlled Heated Holding Tanks	S	15,000 BTU Ducted Roof Air	O
Aluminum Bed and Dinette Base	S	Torsion Axle, Rubber-Ryde Suspension	S	2nd AC in Bedroom with Digital Dual Control Thermostat	O
6 Sided Aluminum Cage Construction	S	Polished Alloy Wheels	S	Fireplace (832FLSB, 832OKSB, 832IKSB, 832RKSB, 832CLSB Only )	S*
Vacuum Laminated 1 Piece Roof and Walls	S	Spare Tire Carrier & Cover	S	Carbon Monoxide Detector	S
Tinted Bonded Frameless Windows	S	Nitro Filled Tires	S	12 Volt Power Plug With USB Charging Port	S
Power Awning w/ Adjustable Rain Dump and LED Light Strip	S	Slam Latch Baggage Doors and Magnetic Door Holds	S	CSA (Canadian Standards)	O
Enclosed Underbelly	S	Rear Observation Camera Prep w/ Molded Mounting Plate	S	Battery Disconnect Switch	S
13,500 BTU Ducted A/C with 50 AMP Service and Prepped for 2nd AC	S	Solar Panel Prep	S	55 Amp Converter With Charger	S
Upgraded 22" Gas Oven	S	Rear Ladder	S	LED 12 Volt Interior Lighting	S
Microwave Oven	S	Black Tank Flush	S	Ceiling LED 12 Volt Interior Lighting w/ Multiple Switches	S
Recessed Cooktop and Oven w/ Flush Mount Cover	S	Outside Griddle W/ LP Gas Hook up	S	Interior Floor Light by Entrance Door	S
Hidden Hinge Cabinet Doors	S	Radiant Foil Insulated Underbelly, Fronts and Slide-out Floors	S	Digital AM/FM/DVD w/ "Bluetooth" Technology	S
Residential Full Extension Metal Soft Close Drawer Guides	S			MP3 Player Hook-Up	S
Extra Large Double Door 2 Way Refrigerator	S	<b>INTERIOR FEATURES</b>		LCD Bedroom TV STD.(Std. 832BH)	S*
Solid Surface Kitchen Countertops	S	Slatewood Interior	S	LCD Bedroom TV Optional (832FLSB, 832BHKS, 832OKSB, 832IKSB, 832RKBS, 832CLSB)	O*
Kitchen Backsplash	S	American Maple Interior	O	LCD Mounted TV and Entertainment center in Bunk Room (Opt. 832BH, NA. 832BHKS)	O*
Flush Mount Stainless Steel Sinks With "High Rise" Lift-Off	S	Decorative Slide Out Fascia	S	Tri Fold Bunk Room Sofa (Required Option: 832BH, Opt. 832BHKS)	O*
6 Gallon Quick Recovery Auto Ignition Gas/Electric Water Heater	S	Decorative Cove Trim Along Ceiling and Overhead Cabinets	S	Push Back Recliner (Std. 832BHKS)	S*
Shower Miser Water Saver System	S	Screwed and Glued Cabinetry	S	Lazy Boy Swivel Recliner Option: ILO Standard Pushback Recliner (832IKSB)	O*
360 Siphon Vent Cap on Black Tanks	S	Solid Wood and Raised Panel Doors and Drawers	S		
Serta Memory Foam Mattress Upgrade	S	Upgraded Cabinetry Hardware	S		
Outside Speakers	S				

STANDARDS & OPTIONS ARE SUBJECT TO CHANGE.





MODELS	C
Lazy Boy Swivel Recliner ILO Theater Seating (8320KSB, 832RKSB)	0*
Theatre Seating Available ILO Standard Recliner or HAB sofa (Per floorplan, NA 832IKSB, 832CLSB)	S*/0*
Day/Night Shades	S
Deluxe Interior Window Treatment	S
Day/Night Roller Shades	0
Family Style Dinette (Per floorplan)	S*
Spacious King-U-Style Dinette (Opt. 832BH)	0*
Free Standing Table and Chairs (Per floorplan)	S*/0*
Decorative Wood Refrigerator Panels (NA 832RKSB)	S*
Large Auto Gas/Electric Refrigerator	S
12 Cubic Foot Auto Gas/Electric Refrigerator W/ Stainless Steel Panels (832RKSB only)	S*
21 Cubic Foot Residential Refrigerator w/ Inverter (Opt. 832FLSB, 832CLSB, 832RKSB)	0*
11 Cubic Foot Residential Refrigerator w/ Inverter (Opt. 832BH, 832BHKS, 832IKSB)	0*
Three Burner High Output Gas Range with Glass Top Cover	S
Water-Pur Filtration System	S
Counter Top Extension (832BH Only)	S*
Radius Glass Door Shower, Per floor Plan	S*
Bathroom Skylight	S
Floor Ducted 35,000 BTU Gas Furnace	S
Interior Gas / Electric Water Heater Switch	S

MODELS	C
Water Heater By-Pass Kit	S
Residential Style Porcelain Bowl Foot Flush Toilet	S
Maxxair® Ventilation Fan and Vent Cover	S
Extra Maxxair® Ventilation and Vent Cover	0
King Bed Slide (Std. 832FLSB, 8320KSB, 832IKSB, 832RKSB, 832CLSB)	S*
Washer/Dryer Prep (Std. 832FLSB, 8320KSB, 832RKSB, 832CLSB)	S*
<b>EXTERIOR FEATURES</b>	
Fully Aluminum Frame (Floor, Sidewall, & Roof)	S
Insulation Factors R-7 Side Wall, R-12 Floor and R-14 Roof	S
Radius Roof With Vaulted 86" Interior Ceilings	S
One Piece Seamless Roofing Membrane	S
TV Antenna w/ Cable & Satellite Hook-Up	S
Bike Rack Ladder Attachment	0
Tongue Mount Bike Rack	0
Laminated Champagne Color Fiberglass Sidewalls	S
White Laminated Fiberglass Sidewalls	0
Electric Slide-Out(s)	S
Decorative Frame Skirting	S
Distinctive Black Exterior Trim	S
Power Awning With Adjustable Rain Dump and LED Lighting	S
Shielded Awning Covers	0
Awning Slide Topper	0
30" Primary Entrance Door (Most Models)	S

MODELS	C
Friction Hinge Entrance Door	S
Sliding Glass Patio Door (832CLSB Only)	0*
Lighted Entry Step	S
Large Grab Handles	S
Tinted Bonded Frameless Windows	S
Thermo Pane Window Upgrade	0
Free Standing Table and Chairs	S*/0*
Outside Shower	S
Outside Antifreeze Inlet for Convenient Winterizing	S
Slam Latches on Most Exterior Storage Doors	S
Magnetic Storage Door Latches	S
Two 30 lb Gas Bottles	S
Molded Bottle Cover	S
Surface Coated Steel I-Beam Frame	S
Power Stabilizer Jack	S
One Touch 4.0 Leveling System	0
Easy Lube Axles & Never adjust Brakes	S
15" Tires	S
Strut Assist Fold-Out Steps	S
4 Power Stabilizer Jacks	0
Power Tongue Jack	S
Roof Mount Solar Prep	0
2" Hitch Receiver	S

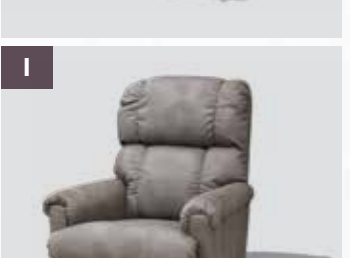
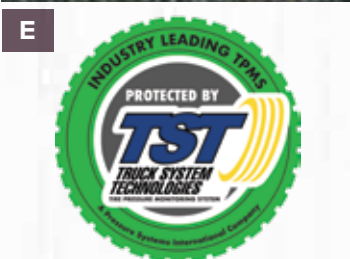
TT = CLASSIC SUPER LITE TRAVEL TRAILER, S = STANDARD, 0 = OPTIONAL, -- NOT AVAILABLE, \* = SELECTED MODELS

# Popular Features

**FEATURES THAT MAKE YOUR TRIPS FEEL LIKE HOME.** Flagstaff takes careful consideration to each feature added into each product produced. Every detail is considered ranging from extra sleeping room, storage, comfort and convenience. Take time to review the features listed below and match them with the competition's products. We're confident you'll discover Flagstaff is the superior choice.



- A** Power Awning with tilt adjustment and LED indirect lighting [Std.]
- B** LCD TV (where applicable) and a stereo system with Bluetooth technology and a DVD player. Electric Fireplace / Heater [Std./Opt. on select models].
- C** Radius Glass Door Shower [N/A Models with Tub Bases]
- D** Free-standing chair with seat storage and table with extension [Opt./Std. select models]
- E** Deluxe Hide-A-Bed Sleeper Sofa on select models
- F** Deluxe Hide-A-Bed Sofa w/ comfortable, easy set-up bed. [Per floorplan]



**A** WIFI Ranger Sky 4 WIFI Booster with LTE available connectivity

**B** Rear camera prep. [Std. all models] The Furriion observation camera system with digital wireless technology is sold separately.

**C** 2" Accessory Hitch Receiver [std.] 300 LB capacity.

**D** Shower Miser Water System Saver

**E** Tire Pressure Monitoring System [Std.]

**F** Ground solar panel prep [Std] Roof solar panel prep [Opt.] [Solar panel sold separately].

**G** Hide-A-Bed Sofa

**H** Swivel Rocker Recliner where applicable. Fabric matched to decor. [Per floorplan]

**I** La-Z-Boy swivel recliner. Fabric matched to decor. [Opt. Available ILO all units with standard push back recliner]

**J** 67" Heated theatre seating per plan where available. Fabric matched to decor. [Per floorplan]

## DIAMOND

SOFA, CHAIRS, DINETTE CUSHIONS  
(LEATHER APPEARANCE) (LEVI CHOCOLATE)

ACCENTS (TYPHOON PEBBLE)



SLATEWOOD  
STANDARD



AMERICAN MAPLE  
OPTIONAL



STANDARD  
FLOOR COVERING



OPTIONAL  
FLOOR COVERING



CARPET

## OPAL

SOFA, CHAIRS, DINETTE CUSHIONS  
(LEATHER APPEARANCE) (OMBRE PEBBLE)

ACCENTS (OZZI MICA)



CURTAINS (TYPHOON PEBBLE)

ACCENTS (OMBRE SEAL)



# Quality Construction

**THE DETAILS ARE WHAT MAKE ALL THE DIFFERENCE.** Flagstaff takes pride in constructing the very best products possible in each price point. From our entry level units to our top of the line products, no short cuts are taken to achieve excellence. From the all-steel I-beams to the residential interior amenities to the vacuum-bonded exteriors, Flagstaff products are quality built from the ground-up.



- A** Glued and screwed wood cabinetry
- B** Aluminum dinette frames for added strength and weight savings
- C** 5/8" tongue and groove plywood glued and screwed to aluminum framing.
- D** Extra large dinette storage drawers and full extension metal drawer guides in the kitchen
- E** Dexter Torflex Axles:
  - Independent wheel suspension and self-damping action
  - Rubber cushioning eliminates metal-to-metal contact.
  - Forged torsion arm for maximum strength
- Models are also equipped with E-Z Lube® System and Nev-R-Adjust® Brakes.
- F** Standard under belly to protect trailer components as well as increasing aerodynamics
- G** Aluminum Frame Construction with high gloss fiberglass exterior and deluxe graphics

## ROOF CONSTRUCTION



4" thick vacuum-bonded radius roof with built in insulated A/C ducts and vaulted ceiling providing superior insulation and more interior height.

## INSPECTION



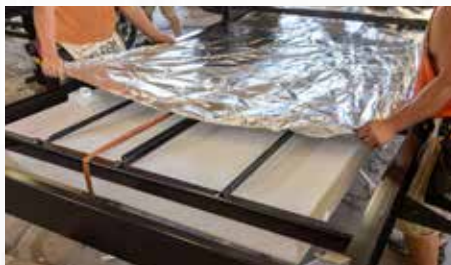
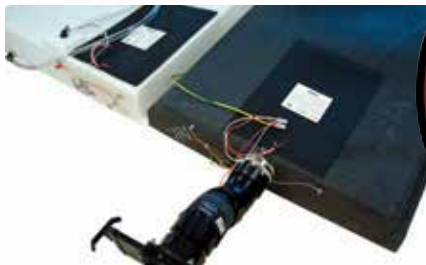
Rigorous aesthetic and full functional testing performed on every trailer produced

## VACUUM-BONDED LAMINATED CONSTRUCTION



Flagstaff is one of only a few manufacturers with six sided aluminum framing. Vacuum bonded walls and roof to ensure a well-insulated, light weight, strong structural trailer.

## CLIMATE PROTECTION



Heated holding tanks, enclosed underbelly's, larger furnaces and a radiant foil barrier in the underbelly, front cap and slide-out floors lead to a better insulated more comfortable coach year-round. (Heat pads std. Classic and Super Lite and opt. on Micro & Shamrock).

## WALL STRENGTH

Structurally engineered materials makes our vacuum-bonded walls some of the strongest in the industry.



# Look for our other popular lines of Flagstaff camping trailers.



FLAGSTAFF TENT CAMPERS



FLAGSTAFF E-PRO



FLAGSTAFF FIFTH WHEELS

**FREE MEMBERSHIP**  
to Forest River Owners' Group

[www.forestriverfrog.com](http://www.forestriverfrog.com)



## PRE-DELIVERY INSPECTION FACILITY

20,000 square feet of quality assurance. The bare essentials for a premium product. This state-of-the-art facility gives immediate daily feedback to production for quality assurance in every unit built.

## 24/7 EMERGENCY ROADSIDE ASSISTANCE WITH VEHICLE PURCHASE\*

TOWING  
JUMP-STARTS  
TIRE CHANGES  
FLUID DELIVERY  
LOCKOUT  
SERVICE

WINCH-OUT  
MOBILE MECHANIC  
TECHNICAL  
SUPPORT  
DEALER LOCATOR  
SERVICES



\*VALID FOR 1 YEAR FROM DATE OF PURCHASE

## SPECIFICATION DEFINITIONS

**GVWR (Gross Vehicle Weight Rating)** - is the maximum permissible weight of the unit when fully loaded. It includes all weights, inclusive of all fluids, cargo, optional equipment and accessories. For safety and product performance do NOT exceed the GVWR.

**GAWR (Gross Axle Weight Rating)** - is the maximum permissible weight, including cargo, fluids, optional equipment and accessories that can be safely supported by a combination of all axles.

**UVW (Unloaded Vehicle Weight)\*** - is the typical weight of the unit as manufactured at the factory. It includes all weight at the unit's axle(s) and tongue or pin and LP Gas. The UVW does not include cargo, fresh potable water, additional optional equipment or dealer installed accessories.

\*Estimated average based on standard build optional equipment.

**CCC (Cargo Carrying Capacity)\*\*** - is the amount of weight available for fresh potable water, cargo, additional optional equipment and accessories. CCC is equal to GVWR minus UVW. Available CCC should accommodate fresh potable water (8.3 lbs per gallon). Before filling the fresh water tank, empty the black and gray tanks to provide for more cargo capacity.

\*\* Estimated average based on standard build optional equipment

Each Forest River RV is weighed at the manufacturing facility prior to shipping. A label identifying the unloaded vehicle weight of the actual unit and the cargo carrying capacity is applied to every Forest River RV prior to leaving our facilities.

The load capacity of your unit is designated by weight, not by volume, so you cannot necessarily use all available space when loading your unit.

## Flagstaff Warranty. Our Promise.

**FOR DETAILS ON FLAGSTAFF'S COMPLETE WARRANTY PROGRAM, SEE YOUR FLAGSTAFF DEALER.**

When it comes to backing products with the same quality and commitment it does when it begins the manufacturing process, the only name you have to remember when you're looking for a recreational vehicle is Flagstaff. Flagstaff offers the following additional limited warranties to the original purchasers. Consult written warranty for details.

1. Twelve-year vinyl roof warranty.
2. Two-year fiberglass warranty.
3. Ten-year Torflex axle warranty.
4. One-year bumper to bumper warranty.
5. Five-year tent warranty.



**Learn More**  
Scan this barcode using  
a QR Reader on your  
smart phone to learn  
more about Forest River.



A Berkshire Hathaway company.



201 WEST ELM MILLERSBURG, IN 46543 [WWW.FORESTRIVERINC.COM/FLAGSTAFF](http://WWW.FORESTRIVERINC.COM/FLAGSTAFF) 574.642.2640

## CUSTOMER SATISFACTION



[www.ForestRiverBuyLocal.com](http://www.ForestRiverBuyLocal.com)

All information contained in this brochure is believed to be accurate at the time of publication. However, during the model year, it may be necessary to make revisions and Forest River, Inc., reserves the right to make all such changes without notice, including prices, colors, materials, equipment and specifications as well as the addition of new models and the discontinuance of models shown in this brochure. Therefore, please consult with your Forest River dealer and confirm the existence of any materials, design or specifications that are material to your purchase decision. Litho. U.S.A. FOR 1711 P&W: 2019.10.16

YOUR FLAGSTAFF DEALER