

# ICONIC

*Toyhaulers*



# Events

## 4 WHEEL PARTS

### Supercross



# PROLINE WRAPS .COM



### MonsterJam



### UTV World Championship



# MAD MEDIA



### Camp RZR



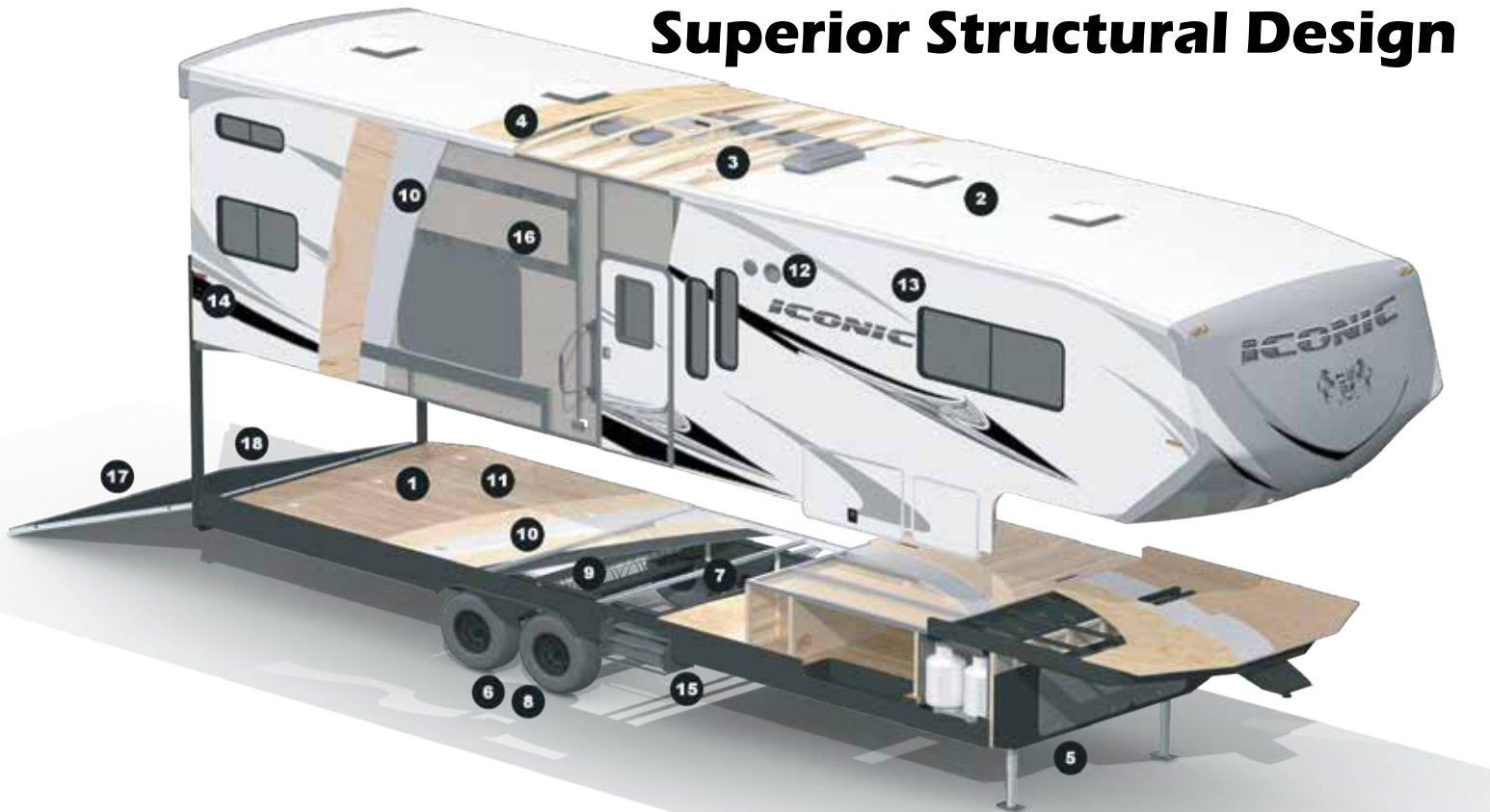
### Doonies



### Make a Wish



# Superior Structural Design

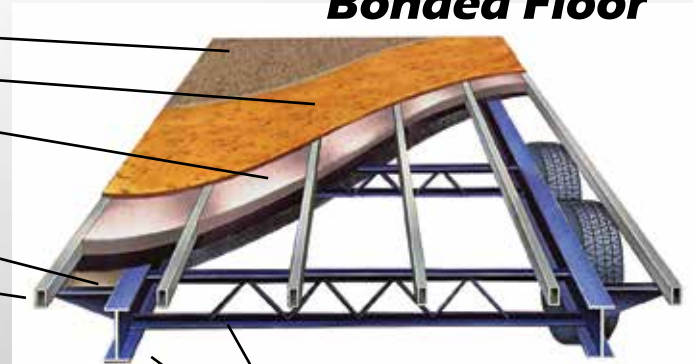


- 1. 2,500 lbs. Tie-Downs Mounted to Steel
- 2. Seamless One Piece TPO Roof
- 3. 5" Roof Trusses
- 4. Fully Decked Walk-on Roof
- 5. Wide Stance Chassis
- 6. Wide Track Axles
- 7. 12 x 2" Self Adjust Brakes w/7,000 lbs. Stopping Capacity per Axle
- 8. Tru-Offroad Lubeable Suspension
- 9. Hi Clearance OffRoad Holding Tanks

- 10. Hi-Density Block Foam - R11 Insulation
- 11. 2 1/4" Ultra Strong Bonded Floor
- 12. Hi-Rez LED Flood Lights
- 13. Extra Large Tinted Windows
- 14. LED Running Lights
- 15. Radius Entry Steps
- 16. Lumber Core Screwed Cabinets w/ Steel Backing
- 17. 3,000 lbs. Ramp Door - Rhino Lined
- 18. Ramp Patio Ready

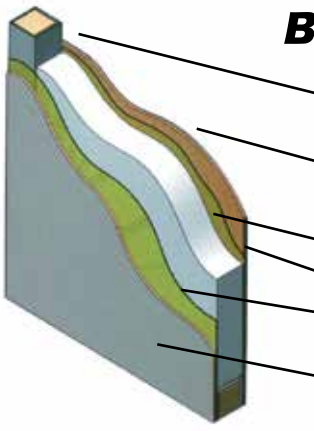
## Bonded Floor

- Residential Grade Linoleum
- 1/2" Marine Grade Plywood Decking
- High Density EPS Foam Installation
- Quality Adhesive Developed Specifically for Vacuum Bonded Process
- Luan Under-Decking Covered w/ Underbelly
- 1.5 x 1.5 Welded Aluminum Tube Framing Filled with Lumber for Better Screw Retention



- Heavy Duty Truss Chassis Supports
- I-Beam Chassis

## Bonded Wall



- 1.5 x 1.5 Welded Aluminum Tube Filled with Lumber for Better Screw Retention
- Lamilux Exterior Paneling High Gloss Gel Coated Fiberglass Surface Bonded to Luan Backing
- High Density EPS Foam Insulation
- Quality Adhesive Developed Specifically for Lamination Process
- Vinyl Covered Luan

\* Bonded Walls and Floors on all Fiberglass Coaches

# Limited Edition



## Standard Features - Exterior

- Heavy Duty Axles w/ Zerk Fittings and Self-Adjusting Brakes
- Awning
- Corrugated Thermal Gray Siding  
(Metal Sidewall Units ONLY)
- Fiberglass Sidewalls - Aluminum Framed (Laminated)  
(Glass Sidewall Units ONLY)
- Decked Walk-on Roof
- Floor - 3" Framed
- Front Laminated Fiberglass
- HD Digital Antenna w/ Park Cable Hookup
- Hi Def 3M Graphics
- Hi Rez LED Flood Lights
- LP - Dual 20 Lbs w/ LP Cover
- Powder Coated Chassis w/Double Radius Entry Step
- Propane Stub for Quick Connect
- Ramp Door - 7' Clean Grip Lined (3,000 lbs. Rating)
- Rear Cap
- Stabilizer Jacks - Rear
- Steel Wheels - Mod Black 15"
- Tank Capacities - 100 Fresh, 50 Gray, 50 Black  
(90 Gray on 2414GT & 2414GTG)
- Windows - Extra Large Tinted

## Standard Features - Interior

- 30 AMP Service
- A/C Living Room - 13.5K BTU (Ducted)  
(Non-Ducted - 1913CB-LE, 1913CBGLE, 2020SF-LE, 2020SFGLE)
- Drive-on Wheel Box
- Electric Bed w/Bunk Ladder
- Furnace - 18K BTU (Ducted)  
(Non-Ducted - 1913CB-LE, 1913CBGLE, 2020SF-LE, 2020SFGLE)
- Glass Enclosed Shower  
(2114SF-LE, 2114SFGLE, 23FIB-LE, 23FIBGLE ONLY)
- I-Beam Chassis w/ Z-style Outriggers
- Interior LED Lighting w/Dimmer
- Lumber Core Screwed Cabinets
- Microwave - Range Hood - Range/Oven
- Mini-Blinds
- Porcelain Toilet
- Rapid Charge Converter
- Refrigerator - Large Double Door
- Single Bowl Galley Sink w/ Pull-out Faucet
- Stereo - AM/FM/BT/DVD w/Exterior Speakers
- Tie Downs - 2,500 Lbs. Rating
- Top Stitch Deluxe Furniture
- Water Heater - 6 Gal DSI (Quick Recovery)

## Optional Upgrades

- 100 AMP Lithium (LiFePO4) Battery
- 2 Chairs IPO Sofa
- Aluminum Wheels - Deluxe 15" Black (Gold w/Gold Graphics)
- Electric Bed w/Bunk Ladder
- Electric Bed / Dinette (Bottom Bunk) w/Bunk Ladder
- Enclosed Tanks - Heated
- Generator - 4.0K Onan w/Transfer Switch  
(N/A- 1913CB-LE, 1913CBGLE, 2020SF-LE, 2020SFGLE)
- Front Fiberglass Cap
- Fuel Station - 40 Gallon
- LP - Dual 30 Lbs.
- Power Tongue Jack
- Ramp Door Cable Kit
- Rear Screen Wall
- Skylight over Shower  
(N/A- 1913CB-LE, 1913CBGLE, 2020SF-LE, 2020SFGLE)
- Solar Panel - 210 Watt
- Solar Panel Expansion - 210 Watt (2nd Panel)
- Spare Tire w/Carrier
- Stabilizer Jacks - Front
- TV - Living Room (32" Class)
- Winterize

## Limited Package Includes:

- Electric Awning - DVD - Black Tank Flush
- 12V USB Charger

## 1913CB-LE



## 2020SF-LE



### Interior Colors

- Carmel w/ Skybrush Wood
- Coronado w/ Rovere Gessato Wood
- Pismo w/ Frost Pine Wood
- Manhattan w/ Frost Pine Wood
- Golden Gate w/ Vermont Elm Wood

## 2114SF-LE



### Hi Def Exterior Graphics

- Gray
- Royal Gold
- Kinetic Teal

## 23FiB-LE



## Iconic Limited Models:

- 1913CB-LE • 2020SF-LE • 2114SF-LE • 23FiB-LE • 2414GT
- 1913CBGLE • 2020SFGLE • 2114SFGLE • 23FiBGLE • 2414GTG

## 2414GT



# Pro Lite



## Standard Features - Exterior

- Corrugated Thermal Gray Siding (N/A 2816CKG)
- Gray Fiberglass Sidewalls - Aluminum Framed (Laminated) (2816CKG ONLY)
- Decked Walk-on Roof
- Electric Awning w/LED Light
- Exterior Shower
- Floor - 3" Framed
- Front & Rear Laminated Gray Fiberglass (Fiberglass Front Cap on 2816CKG)
- Fuel Station - 40 Gallon
- HD Digital Antenna w/ Park Cable Hookup
- Heavy Duty Axles w/ Zerk Fittings and Self-Adjusting Brakes
- Hi Def 3M Graphics
- Hi Rez LED Lights - Running, Flood (DS-2, Rear-2, Porch-1)
- Lights - Hitch and Step
- LP - Dual 20 Lbs w/ LP Cover
- Powder Coated Chassis w/Double Radius Entry Step
- Ramp Door w/Cables- 7' Clean Grip Lined (3,000 lbs. Rating)
- Spare Tire w/Carrier
- Stabilizer Jacks - Front & Rear
- Steel Wheels - Mod Black 15" (16" on 2816CKG)
- Swing-away Entry Door Assist Handle
- Tank Capacities - 100 Fresh, 50 Gray, 50 Black w/ Tank Flush

## Standard Features - Interior

- 2 Chairs w/Bay Window
- 30 AMP Service
- A/C Living Room - 13.5K BTU Ducted
- Drive-on Metal Wheel Well - 3,000# Rating (N/A 2816CKG)
- Electric Bed/Dinette (Bottom Bunk) w/Bunk Ladder (OPT on 2816CKG)
- Electric Bed/Flip-Over Lounge w/Bunk Ladder (2816CKG ONLY)
- Furnace - 18K BTU Ducted (30K BTU on 2816CKG)
- Glass Enclosed Shower (2715SF & 2816CKG ONLY)
- I-Beam Chassis w/ Z-style Outriggers
- Interior LED Lights w/Dimmer
- Lumber Core Screwed Cabinets
- Medicine Cabinet
- Microwave - Range Hood - Range/Oven
- Pillowtop Mattress w/Bedsread
- Pleated Shades
- Porcelain Toilet
- Rapid Charge Converter
- Refrigerator - Large Double Door
- Marble Swirl Galley Top- Drop Range w/Glass Cover
- SS Single Bowl Galley Sink w/Pull-out Faucet
- Stereo - AM/FM/BT/DVD w/Exterior Speakers
- Top Stitch Deluxe Furniture
- USB Chargers - 12V (One in Galley & One in Bedroom)
- Water Heater - 6 Gal DSI (Quick Recovery)

## Optional Upgrades

- 100 AMP Lithium (LiFePO4) Battery
- 2nd 100 AMP Lithium Battery
- A/C Living Room - 15K BTU
- Aluminum Wheels-Dlx 15" Black (Gold w/Gold Graphics) (16" on the 2816CKG)
- Black Aluminum Fender Skirts (STD on the 2816CKG)
- Enclosed Tanks - Heated
- Folding Roof Ladder
- Front Fiberglass Cap (STD on the 2816CKG)
- Generator - 4.0K Onan w/Transfer Switch (STD on the 2816CKG)
- Heavy Duty Electric Stabilizer Jacks (Front & Rear) (N/A 2816CKG)
- Inverter - 2000 Watt
- Living Room Slideout - Roadside
- LP - Dual 30 Lbs.
- MorRyde Ramp Patio Fence
- MorRyde Ramp Patio Steps
- MorRyde Step Above Entry Steps
- Power Tongue Jack (N/A 2816CKG)
- Pull Down Rear Screen
- Refrigerator - XL Double Door
- Skylight Over Shower
- Solar Panel - 210 Watt
- Solar Panel Expansion - 210 Watt (2nd Panel)
- Stainless Steel Appliances
- TV - Living Room (32" Class)(40" on 2816CKG)
- Winterize

## Glass Package (Gray) Includes: (N/A on 2816CKG)

- Fiberglass Sidewalls - Aluminum Framed (Laminated)
- Ultra Strong Bonded Floor



2515AK



2715SF

## Interior Colors

- Carmel w/ Skybrush Wood
- Coronado w/ Rovere Gessato Wood
- Pismo w/ Frost Pine Wood
- Manhattan w/ Frost Pine Wood
- Golden Gate w/ Vermont Elm Wood

## Hi Def Exterior Graphics

- Gray
- Royal Gold
- Kinetic Teal

## Fifth Wheel Only Options:

- 6-Point Hydraulic Leveling
- Electric Bed / Dinette (Bottom Bunk) w/Bunk Ladder
- Generator - 5.5K Onan w/Transfer Switch & 50 AMP
- Heavy Duty Electric Stabilizer Jacks (Rear)

## Iconic Pro Lite Models:

- 2515AK (TT) • 2615RS (TT) • 2715SF (TT) • 2816CKG (FW)



2515AK



2715SF



2615RS



2816CKG

# Widelite Trailer



## Standard Features - Exterior

- 100 AMP Lithium (LiFePO4) Battery/210 Watt Solar Panel
- Aluminum Wheels - Deluxe 15" Black (16" on 2818SWG & 2814IK)
- Black Aluminum Fender Skirts
- Curbside Under Glow LED Lighting
- Decked Walk-on Roof
- Electric Awning w/ LED Light
- Exterior Shower
- Fuel Station - 40 Gallon
- Generator - 4.0K Onan w/Transfer Switch
- Gray Fiberglass Caps - Front (w/LED)
- Gray Fiberglass Sidewalls - Aluminum Framed (Laminated)
- HD Digital Antenna w/ Park Cable Hookup
- Heavy Duty Axles w/ Zerk Fittings and Self-Adjusting Brakes
- Hi Rez LED Lights - Running, Flood (DS-2, Rear-2, Porch-1)
- Lights - Hitch and Step
- LP - Dual 30 Lbs w/ Custom LP Cover
- Powder Coated Chassis w/Double Radius Entry Step
- Power Tongue Jack
- Ramp Door w/Cables- 7' Clean Grip Lined (3,000 lbs. Rating)
- Spare Tire w/Carrier
- Stabilizer Jacks - 4 (High Clearance)
- Swing-away Entry Door Assist Handle
- Tank Capacities - 150 Fresh, 50 Gray, 50 Black w/ Tank Flush
- Ultra Strong Bonded Floor

## Standard Features - Interior

- 2 Chairs with Bay Window
- 30 AMP Service
- A/C Living Room - 15K BTU Ducted
- Electric Bed / Dinette (Bottom Bunk) w/ Ladder
- Electric Fireplace in Livingroom (3214IKG Only)
- Furnace - 30K BTU Ducted
- Glass Enclosed Shower w/Skylight
- LED Lights w/Dimmer
- Lighted Solid Surface Galley Top- Drop Range w/Glass Cover
- Living Room Slide
- Microwave w/Built-in Range Hood - Range/Oven
- Pillowtop Mattress w/Bedspread and Shams
- Pleated Shades
- Refrigerator - XL Double Door
- SS Single Bowl Galley Sink w/Pull-out Faucet & Water Filter
- Stereo - AM/FM/CD/DVD/BT w/App Controls and Ext. Speakers
- TV - Living Room (50" Class) (50" & 32" Class on 3016IK & 3222SWG)
- USB Chargers - 12V (One in Galley & One in Bedroom)
- Water Heater - 10 Gal Electric/DSI (Quick Recovery)





# ICONIC



2814IK



3016IK



2814IK

## Interior Colors

- Carmel w/ Skybrush Wood
- Coronado w/ Rovere Gessato Wood
- Pismo w/ Frost Pine Wood
- Manhattan w/ Frost Pine Wood
- Golden Gate w/ Vermont Elm Wood

## Hi Def Exterior Graphics

- Gray
- Royal Gold
- Kinetic Teal

## Optional Upgrades

- 2nd 100 AMP Lithium Battery
- 2nd A/C Bedroom - 13.5K BTU (Req's 5.5 Gen Opt)
- Aluminum Wheels - Deluxe 16" (3222SWG ONLY)
- Ceiling Fan - 12V
- Enclosed Tanks - Heated
- Fantastic Fan in Bathroom IPO STD
- Fantastic Fan in Bedroom
- Fantastic Fan w/Wall Switch in Kitchen IPO STD
- Folding Roof Ladder
- Generator - 5.5K Onan w/Transfer Switch & 50 AMP
- Girard Electric Awning w/Wind Sensor
- Heavy Duty Electric Stabilizer Jacks (Front & Rear)
- Inverter - 2000 Watt
- Kicker Stereo System w/App Controls
- MorRyde Ramp Patio Fence
- MorRyde Ramp Patio Steps
- MorRyde Step Above Entry Steps
- Pull Down Rear Screen
- Rear Girard Electric Awning w/LED Light
- Roadside Hi Rez LED Flood Lights (2)
- Solar Panel - 840 Watt
- Solar Panel Expansion - 210 Watt (2nd Panel)
- Speakers on Rear Electric Awning (Rear Awning Opt. Required)
- Stainless Steel Appliances
- TV - Bedroom (32" Class)
- Wardrobe Slideout
- Windows - Frameless
- Winterize

## Centurion Package Includes:

- Solid Surface Lavy Top w/ Glass Bowl & Deluxe Faucet

## Iconic Widelite Models:

- 2818SWG (TT)
- 2814IK(TT)
- 3016IK (TT)
- 3222SWG (TT)
- 3214IKG (TT)



# Widelite 5th Wheels



3016SG

3016SG

3016SG

## Standard Features - Exterior

- 100 AMP Lithium (LiFePO4) Battery/210 Watt Solar Panel
- 7,000 LB Axles w/ Zerk Fittings and Self-Adjusting Brakes (8,000 LB Axles on 3322CK)
- Aluminum Wheels - Deluxe 16" Black w/G-Rated Tires
- Black Aluminum Fender Skirts
- Curbside Under Glow LED Lighting
- Decked Walk-on Roof
- Electric Awning w/ LED Light
- Exterior Shower
- Fuel Station - 40 Gallon
- Generator - 4.0K Onan w/Transfer Switch
- Gray Fiberglass Caps - Front (w/LED)
- Gray Fiberglass Sidewalls - Aluminum Framed (Laminated)
- HD Digital Antenna w/ Park Cable Hookup
- Hi Rez LED Lights - Running, Flood (DS-2, Rear-2, Porch-1)
- Lights - Hitch and Step
- LP - Dual 30 Lbs
- Powder Coated Chassis w/Triple Radius Entry Step
- Power Tongue Jack
- Ramp Door w/Cables- 7.5' Clean Grip Lined (3,000 lbs. Rating)
- Spare Tire w/Carrier
- Stabilizer Jacks - Rear (High Clearance)
- Swing-away Entry Door Assist Handle
- Tank Capacities - 150 Fresh, 50 Gray, 50 Black w/ Tank Flush
- Ultra Strong Bonded Floor

## Standard Features - Interior

- 2 Chairs with Bay Window
- 30 AMP Service
- A/C Living Room - 15K BTU Ducted
- Electric Bed / Dinette (Bottom Bunk) w/ Ladder
- Furnace - 30K BTU Ducted
- Glass Enclosed Shower w/Skylight
- LED Lights w/Dimmer
- Lighted Solid Surface Galley Top- Drop Range w/Glass Cover
- Living Room Slide
- Microwave w/Built-in Range Hood - Range/Oven
- Pillowtop Mattress w/Bedsread and Shams
- Pleated Shades
- Refrigerator - Side-by-Side 4-Door (Gas/Electric - 18.3CF)
- SS Single Bowl Galley Sink w/Pull-out Faucet & Water Filter
- Stereo - AM/FM/CD/DVD/BT w/App Controls and Ext. Speakers
- TV - Living Room (50" Class)  
(50" & 32" Class on 3016SG & 3322CK)
- USB Chargers - 12V (One in Galley & One in Bedroom)
- Water Heater - 10 Gal Electric/DSI (Quick Recovery)



3016SG

3016SG



2814SG



3016SG



2814SG

## Interior Colors

- Carmel w/ Skybrush Wood
- Coronado w/ Rovere Gessato Wood
- Pismo w/ Frost Pine Wood
- Manhattan w/ Frost Pine Wood
- Golden Gate w/ Vermont Elm Wood

## Hi Def Exterior Graphics

- Gray
- Royal Gold
- Kinetic Teal

## Optional Upgrades

- 2nd 100 AMP Lithium Battery (Required w/ Off-the-Grid)
- 2nd A/C Bedroom - 13.5K BTU (Req's 5.5 Gen Opt)
- 6-Point Hydraulic Auto Leveling
- 8,000 Lbs. Axles IPO Std (STD on 3322CK)
- Ceiling Fan - 12V
- Enclosed Tanks - Heated
- Fantastic Fan in Bathroom IPO STD
- Fantastic Fan in Bedroom
- Fantastic Fan w/Wall Switch in Kitchen IPO STD
- Folding Roof Ladder
- Generator - 5.5K Onan w/Transfer Switch & 50 AMP
- Girard Electric Awning w/Wind Sensor
- Heavy Duty Electric Stabilizer Jacks (Rear)
- Inverter - 2000 Watt (Required w/ Off-the-Grid)
- Kicker Stereo System w/App Controls
- MorRyde Ramp Patio Fence
- MorRyde Ramp Patio Steps
- MorRyde Step Above Entry Steps
- Off-the-Grid Hybrid X
- Pull Down Rear Screen
- Rear Girard Electric Awning w/LED Light
- Roadside Hi Rez LED Flood Lights (2)
- Solar Panel - 840 Watt (N/A w/ Off-the-Grid)
- Solar Panel Expansion - 210 Watt (2nd Panel)
- Speakers on Rear Electric Awning (Rear Awning Opt. Required)
- Stainless Steel Appliances
- TV - Bedroom (32" Class)
- Wardrobe Slideout
- Windows - Frameless
- Winterize

## Centurion Package Includes:

- Solid Surface Lavy Top w/ Glass Bowl & Deluxe Faucet

## Iconic Widelite Models:

- 2919CK (5W)
- 2814SG (5W)
- 3016SG (5W)
- 3322CK (5W)

## 2814SG



## 2919CK



## 3016SG



## 3322CK



# Widebody 5th Wheels



## Standard Features - Exterior

- 100 AMP Lithium (LiFePO4) Battery/210 Watt Solar Panel
- 7,000 LB Axles w/ Zerk Fittings and Self-Adjusting Brakes
- Aluminum Wheels - Deluxe 16" Black w/G-Rated Tires
- Black Aluminum Fender Skirts
- Curbside Under Glow LED Lighting
- Electric Awning w/ LED Light
- Folding Roof Ladder w/ Decked Walk-on Roof
- Fuel Station - 40 Gallon
- Generator - 5.5K Onan w/Transfer Switch
- Gray Fiberglass Caps - Front (w/LED) - Full Turning Radius 88°
- Gray Fiberglass Sidewalls - Aluminum Framed (Laminated)
- HD Digital Antenna w/ Park Cable Hookup
- Hi Rez LED Lights-Running, Flood (DS-2,RS-2,Rear-2, Porch-1)
- Lights - Hitch and Step
- LP - Dual 30 Lbs
- Powder Coated Chassis w/ Triple Radius Entry Step
- Ramp Door w/Cables- 7.5' Clean Grip Lined (3,000 lbs. Rating)
- Spare Tire w/Carrier
- Stabilizer Jacks - Rear (High Clearance)
- Swing-away Entry Door Assist Handle
- Tank Capacities - 150 Fresh, 50 Gray, 50 Black w/ Tank Flush
- Ultra Strong Bonded Floor

## Standard Feature - Interior

- 50 AMP Service
- A/C Living Room - 15K BTU Ducted
- Ceiling Fan - 12V (N/A w/Lighted Logo Soffit)
- Electric Bed / Dinette (Bottom Bunk) w/ Ladder
- Electric Fireplace in Bedroom (In Livingroom also on 35's)
- Furnace - 30K BTU Ducted
- Glass Enclosed Shower w/Skylight
- In-Floor Beaver Tail Storage
- LED Lights w/Dimmer
- Lighted Solid Surface Galley Top- Drop Range w/Glass Cover
- Microwave w/Built-in Range Hood - Range/Oven
- Pillowtop King Mattress w/Bedsread and Shams
- Pleated Shades
- Refrigerator - Side-by-Side 4-Door (Gas/Electric - 18.3CF)
- SS Single Bowl Galley Sink w/Pull-out Faucet & Water Filter
- Stereo - AM/FM/CD/DVD/BT w/App Controls and Ext. Speakers
- TV - Living Room (50" Class)
- USB Chargers - 12V (One in Galley & One in Bedroom)
- Water Heater - 10 Gal Electric/DSI (Quick Recovery)

## Optional Upgrades

- 2 Extra Chairs
- 2nd 100 AMP Lithium Battery (Required w/Off-the-Grid)
- 2nd A/C Bedroom - 13.5K BTU (Req'd w/7.0 Gen)
- 2nd Electric Awning w/LED Light
- 6-Point Hydraulic Auto Leveling
- 7.0KW Gen W/Rear 13.5 A/C (High Efficient)
- Central Vacuum System
- Enclosed Tanks - Heated
- Extra 40 Gallon Fuel Tank (N/A 3515IKG)
- Extra 50 Gallon Gray Tank
- Extra 70 Gallons Fresh Water (N/A 3515IKG, 3518IKG)
- Fantastic Fan in Bathroom IPO STD
- Fantastic Fan in Bedroom
- Fantastic Fan w/Wall Switch in Kitchen IPO STD
- Folding Dinette w/Table (3928RS & 4028CL Only)
- Girard Dual Electric Awnings w/Wind Sensor
- Inverter - 2000 Watt (Required w/Off-the Grid)
- Kicker Stereo System w/App Controls
- Lighted Logo Soffit
- Living Room Slideout - RS (4028CL Only; STD on all Others)
- MorRyde Ramp Patio Fence
- MorRyde Ramp Patio Steps
- MorRyde Step Above Entry Steps
- Off-the-Grid Hybrid X
- Onan Energy Command 30 Auto-Start for Generator
- Pull Down Rear Screen
- Pull-Out Exterior TV Entertainment (40" Class)
- Rear Girard Electric Awning w/LED Light
- Rear TV Entertainment (50" Class) (N/A 3515IKG)
- Solar Panel - 840 Watt (N/A w/Off-the-Grid)
- Solar Panel Expansion - 210 Watt (2nd Panel)
- Speakers on Rear Electric Awning (Rear Awning Opt. Required)
- Stainless Steel Appliances
- TV - Bedroom (32" Class)
- Windows - Frameless
- Windows - Thermo Pane
- Winterize
- Wireless Backup Camera

## Centurion Package Includes:

- Solid Surface Lavy Top  
w/ Glass Bowl & Deluxe Faucet



## Interior Color

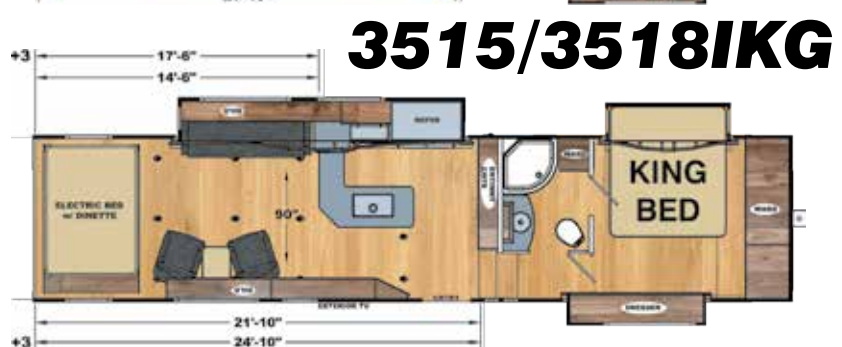
- Carmel w/ Skybrush Wood
- Coronado w/ Rovere Gessato Wood
- Pismo w/ Frost Pine Wood
- Manhattan w/ Frost Pine Wood
- Golden Gate w/ Vermont Elm Wood

## Hi Def Exterior Graphics

- Gray
- Royal Gold
- Kinetic Teal

## Iconic Widebody 5th Models:

- 3218BW (5W)
- 3422RS (5W)
- 3515IKG (5W)
- 3518IKG (5W)
- 3928RS (5W)
- 4028CL (5W)



**Buy Locally**

**ICONIC**

Eclipse Recreation Vehicles Inc. strongly encourages our retail customers to purchase from their local dealership whenever possible.

**Gray Graphics**



# What is the Hottest Toyhauler?



It's all about ICONIC: Iconic offers exceptional innovation, function, and design to meet your expectation for a fun-filled adventure. Whether you play in the dunes with toys, camp in the wild or enjoy the beach, the Iconic is right for you. Eclipse RV built Iconic with you in mind. We offer our customers the ultimate value. Our customers needs and desires were collectively gathered to create the best toyhauler in the industry. We offer choices, whether it be a lightweight 19-foot toyhauler or a 40-plus foot luxurious widebody. We have our customers to thank for our growing success: friends are referring friends!

Limited	GVWR	Dry Weight	Hitch Weight	Axle Weight	Exterior Height	O.A.* Length	Fresh Water	Gray Water	Black Water	LP Capacity
1913CB-LE	9900	5540	660	4880	11'-11"	26'-1"	100 Gal.	50 Gal.	50 Gal.	40#
1913CBGLE	9900	5420	614	4806	11'-11"	26'-1"	100 Gal.	50 Gal.	50 Gal.	40#
2020SF-LE	9900	5960	780	5180	11'-11"	27'-11"	100 Gal.	50 Gal.	50 Gal.	40#
2020SFGLE	9900	5880	800	5080	11'-11"	27'-11"	100 Gal.	50 Gal.	50 Gal.	40#
2114SF-LE	9900	6026	666	5360	11'-11"	28'-10"	100 Gal.	50 Gal.	50 Gal.	40#
2114SFGLE	9900	5926	660	5266	11'-11"	28'-10"	100 Gal.	50 Gal.	50 Gal.	40#
2314SF-LE	9900	6686	1033	5653	11'-11"	29'-3"	100 Gal.	50 Gal.	50 Gal.	40#
2314SFGLE	9900	6566	1006	5560	11'-11"	29'-3"	100 Gal.	50 Gal.	50 Gal.	40#
2414GT	9900	TBD	TBD	TBD	11'-11"	28'-8"	100 Gal.	90 Gal.	50 Gal.	40#
2414GTG	9900	TBD	TBD	TBD	11'-11"	28'-8"	100 Gal.	90 Gal.	50 Gal.	40#
Pro-Lite	GVWR	Dry Weight	Hitch Weight	Axle Weight	Exterior Height	O.A.* Length	Fresh Water	Gray Water	Black Water	LP Capacity
2515AK	9900	7010	1010	6000	11'-11"	31'-8"	100 Gal.	50 Gal.	50 Gal.	40#
2615RS	9900	7850	1060	6790	11'-12"	33'-0"	100 Gal.	50 Gal.	50 Gal.	40#
2715SF	9900	7740	1087	6653	11'-11"	32'-9"	100 Gal.	50 Gal.	50 Gal.	40#
Pro-Lite 5th Wheel	GVWR	Dry Weight	Hitch Weight	Axle Weight	Exterior Height	O.A.* Length	Fresh Water	Gray Water	Black Water	LP Capacity
2816CKG	14000	TBD	TBD	TBD	13'-5"	31'-0"	150 Gal.	50 Gal.	50 Gal.	40#
Wide Lite	GVWR	Dry Weight	Hitch Weight	Axle Weight	Exterior Height	O.A.* Length	Fresh Water	Gray Water	Black Water	LP Capacity
2814iK	13000	9360	1474	7886	12'-6"	35'-8"	150 Gal.	50 Gal.	50 Gal.	60#
2818SWG	13000	9050	1440	7610	12'-6"	36'-3"	150 Gal.	50 Gal.	50 Gal.	60#
3016iK	14000	9666	1413	8253	12'-5"	37'-8"	150 Gal.	50 Gal.	50 Gal.	60#
3214iKG	14000	10380	1700	8680	12'-5"	37'-8"	150 Gal.	50 Gal.	50 Gal.	60#
3222SWG	14000	9460	1700	8240	12'-5"	39'-2"	150 Gal.	50 Gal.	50 Gal.	60#
Wide Lite 5th Wheel	GVWR	Dry Weight	Hitch Weight	Axle Weight	Exterior Height	O.A.* Length	Fresh Water	Gray Water	Black Water	LP Capacity
2814SG	14000	9800	2307	7493	13'-5"	33'-0"	150 Gal.	50 Gal.	50 Gal.	60#
2919CK	14000	10300	2220	8080	13'-5"	34'-6"	150 Gal.	50 Gal.	50 Gal.	60#
3016SG	14000	10780	2240	8540	13'-5"	35'-0"	150 Gal.	50 Gal.	50 Gal.	60#
3322CK	16000	10360	2380	7980	13'-5"	37'-4"	150 Gal.	50 Gal.	50 Gal.	60#
Wide Body 5th Wheel	GVWR	Dry Weight	Hitch Weight	Axle Weight	Exterior Height	O.A.* Length	Fresh Water	Gray Water	Black Water	LP Capacity
3218BW	19000	12570	3210	9360	13'-5"	38'-8"	150 Gal.	50 Gal.	50 Gal.	60#
3422RS	19000	TBD	TBD	TBD	13'-5"	38'-11"	150 Gal.	50 Gal.	50 Gal.	60#
3515iKG	19000	12920	2960	9960	13'-5"	38'-10"	150 Gal.	50 Gal.	50 Gal.	60#
3518iKG	19000	13360	3100	10260	13'-5"	41'-10"	150 Gal.	50 Gal.	50 Gal.	60#
3928RS	19000	TBD	TBD	TBD	13'-5"	44'-5"	150 Gal.	50 Gal.	50 Gal.	60#
4028CL	19000	13927	3327	10600	13'-5"	45'-0"	150 Gal.	50 Gal.	50 Gal.	60#

\* Center of Ball or Pin to Rear of Ramp Door



All product data, graphics and photography in this brochure were as accurate as possible at press time. Subsequent refinements during the model year may be evident in the actual product. Eclipse RV, Inc. reserves the right to change prices, colors, mater equipment and specifications without notice - as well as to add, modify or discontinue models shown in promotional materials and / or on it website. Unloaded vehicle weight and carrying capacities will vary upon optional equipment.

**Manufactured by Eclipse Recreational Vehicles, Inc.**

**3016 Kansas Ave., #14, Riverside, CA 92507**

**(951) 684-6868**

**[www.AttitudeToyhaulers.com](http://www.AttitudeToyhaulers.com)**

**[www.instagram.com/attituderv/](http://www.instagram.com/attituderv/)**

