



UNITY | 2020



Over 50 Years on the Road.

In 2015, we were proud to celebrate 50 years of business in the recreational vehicle industry. We look fondly over our journey with a deep sense of gratitude to those who went before us, to our loyal customers who have supported us, to the many hundreds of employees who served the company so well, and to our dealers who represented the company and sold our products.

Our story began in 1965 when PW Enns, who owned a plumbing and heating business in Winkler, Manitoba, Canada, took an interest in manufacturing travel trailers while visiting Elkhart, Indiana, on a volunteer trip. Arriving home with his newfound business venture, he enlisted the help of his two sons-in-law, Philipp R Ens and Peter Elias. With enthusiasm and energy Triple E was born. The three Es – Enns, Ens, and Elias – became the components of our name, Triple E Recreational Vehicles.

The company started with great modesty. What began as a family-owned operation, with a small group of employees, has today developed into a leading RV manufacturer. Over the years many different models were introduced. From travel trailers, fifth-wheels, Class A motorhomes to our current line-up of Class C motorhomes, these products represent over 50 years of hard work, and hundreds of thousands of hours of commitment and dedication from our employees.

Triple E is fortunate to be located in an area with a rich cultural heritage. Our employees are highly skilled craftspeople with strong work ethic and unwavering dedication. Our commitment to quality and listening to our customers' invaluable feedback has been the foundation of our success. We have seen many changes within the RV industry and, today, Triple E remains one of the last surviving RV manufacturers in Canada.

Today we look to the future with renewed energy and optimism. The company has strong leadership and an excellent workforce. Our products are recognized as some of the finest in the industry. The next generation of our company is driven by innovation while remaining committed to our long-standing history of quality craftsmanship.

Over 50 years later our vision remains committed to being a premier company. We're inspired by the freedom to explore and driven by a commitment to growing our community of employees, customers, dealers, suppliers, and our local community. May you experience the joy of companionship, surprise and adventure, as the road leads you on your journey ahead.



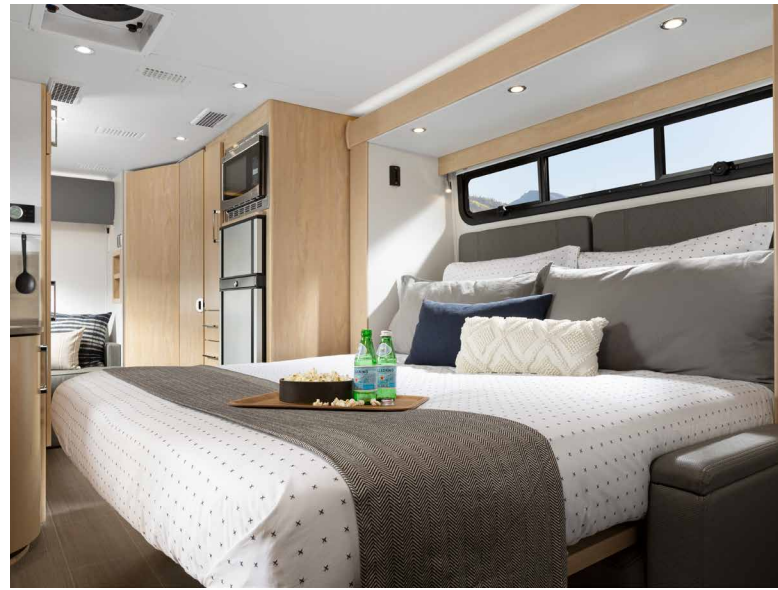


“Our vision is to be a premier company. We’re inspired by the freedom to explore and driven by a commitment to growing our community.”

Founder PW Enns, with the first Class A motorhome designed and manufactured in Canada. 1967.



2020 Unity FX in Sierra Maple cabinetry with Grigio Shadow Fenix
Glamour Upgrade, Stone Corian® and Mountain Ultraleather™.



UNITY FX

Eat. Sleep. Drive. Explore.

The Unity FX's Leisure Lounge System allows you to create a completely customizable living space. For relaxing and living, an endless amount of seating options allows you to live out the good life, while the residential-style sectional sofa provides even more entertainment options when company's coming over.



**UNITY FX
HIGHLIGHTS**

- ◆ Optional Glamour Décor Upgrade including Fenix NTM® matte upper cabinets, available in Bianco White and Grigio Shadow (shown).
- ◆ Ultraleather™ upholstery and Corian® solid surface countertops.
- ◆ The *Leisure Lounge* system allows multiple seating configurations, includes a large 68" x 76" residential mattress, and additional storage compartments.
- ◆ The rear of the FX features a flexible living space with a residential style sectional sofa and two stop bathroom door that provides more floor space. The integrated ottoman is the perfect footrest, coffee table, or even a flip-up work desk.



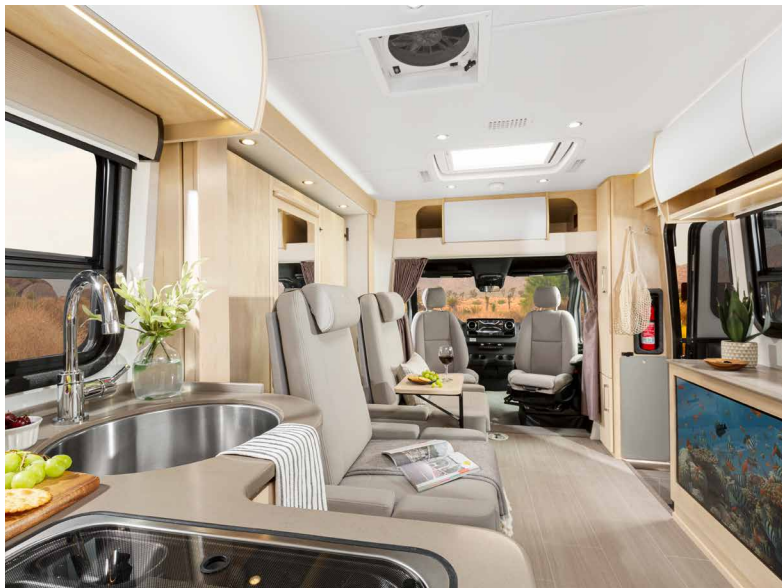
2020 Unity Murphy Bed shown with optional Leisure Lounge Plus in Sierra Maple cabinetry with Bianco White Fenix Glamour Upgrade, Stone Corian® and Earth Ultraleather™.



UNITY MURPHY BED

Unparalleled Style & Comfort.

The Murphy Bed is the Unity's flagship floorplan, and with its spacious interior it's easy to see why. Featuring the optional patented Leisure Lounge Plus, a larger than queen-size 68" x 76" murphy bed, a pop-up 40" Smart LED TV, curved European cabinetry throughout, and a washroom to make any Class A envious, the Unity Murphy Bed is one big "little" motorhome.



MURPHY BED HIGHLIGHTS

- ◆ Optional Glamour Décor Upgrade including Fenix NTM® matte upper cabinets, available in Bianco White (shown) and Grigio Shadow.
- ◆ Ultraleather™ upholstery and Corian® countertops.
- ◆ The optional patented Leisure Lounge Plus (shown above) system allows multiple seating configurations and includes a large 68" x 76" residential mattress.
- ◆ The spacious lavatory features a large 34"x34" corner shower with curved glass doors, Corian® inset with integrated storage, LED accent lighting, and a skylight.



2020 Unity Corner Bed shown with Espresso Brown cabinetry, Fog Ultraeather™, Antarctica Corian® and Bianco White Fenix Glamour Upgrade.

Six Innovative Floorplans.

The 2020 Unity offers six unique floorplans to suit your traveling lifestyle. Whether you prefer a walk-around island bed, twin beds, a corner bed, or our signature murphy bed layouts, you will be immediately impressed by the outstanding use of space and excited by the amount of storage. The Unity sets a new standard in innovation and design.



UNITY CORNER BED

Miles from Ordinary.

The Unity Corner Bed offers all of the comforts and features you would find in a much larger coach, in just over 25'. The booth dinette (shown above) or optional U-Lounge provides the perfect seating area for dining and entertaining. Across the coach you will find the spacious galley, complete with solid surface Corian® countertop and a pull-out pantry. Whether you are cruising through the city or touring the countryside, you are sure to feel right at home in the Unity Corner Bed.

Creatures of Comfort.

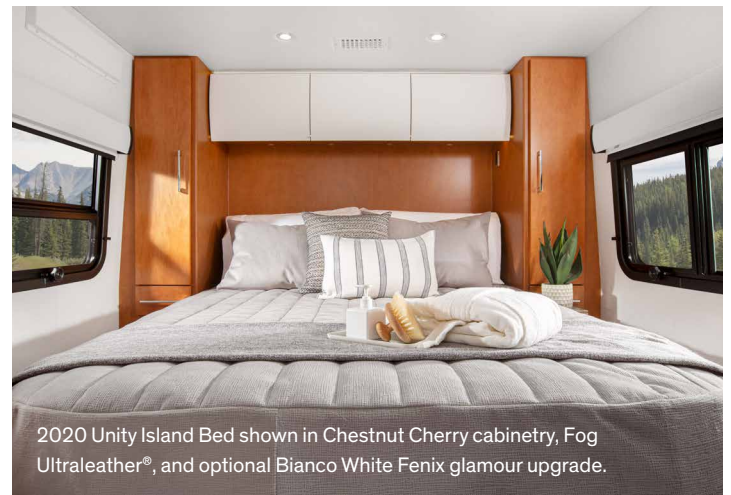
When you are traveling on the open road we know how important it is to get a good rest, at any point in the day. The Unity Island Bed and Twin Bed floorplans offer you the choice between a full-size, walk-around island bed, and twin beds to ensure a great night's sleep and a comfortable place to relax. Featuring a complete three-piece dry bath, extensive storage throughout, and a comfortable living area, the Unity Island Bed or Twin Bed is the perfect touring coach for those extended journeys.

UNITY TWIN BED / ISLAND BED HIGHLIGHTS

- ◆ Twin beds offer impressive storage underneath and can be filled in to form a bed wider than a king-size bed (Unity Twin Bed)
- ◆ Full walk-around 58" x 74" island bed with his and hers wardrobes in a non-slide 25' coach (Unity Island Bed)
- ◆ Optional Glamour Décor Upgrade including Fenix NTM® matte upper cabinets, available in Bianco White and Grigio Shadow.
- ◆ Galley features a deep stainless steel sink, two-burner cooktop and a two-door 6.7 ft³ three-way fridge/freezer
- ◆ An outstanding 63 cubic feet of exterior storage and rear pass-through storage compartment (Unity Island Bed)
- ◆ The standard Leisure Lounge Express converts from a dining area with two seats to a cozy chaise lounge with ease



2020 Unity Twin Bed shown in Sierra Maple cabinetry, Stone Corian® and Earth Ultraleather®.



2020 Unity Island Bed shown in Chestnut Cherry cabinetry, Fog Ultraleather®, and optional Bianco White Fenix glamour upgrade.



UNITY REAR LOUNGE

The Next Generation.

*Concept model pictured. Production model not exactly as shown.

Marking the tenth anniversary of the Unity product line, the Unity Rear Lounge represents a decade of product innovations and sets the stage for the next generation of the Unity. Built on the all-new Sprinter Cab Chassis, the Unity Rear Lounge features a first-of-its-kind innovative layout with two separate living areas, Murphy bed, completely redesigned modern interior, and a host of new technology including the all-new Dometic IoT touchscreen system.



REAR LOUNGE HIGHLIGHTS

- ◆ The spacious rear living area is equipped with an entertainment unit and residential-like sectional sofa where two power recliner seats with built-in footrests provide personalized comfort at the touch of a button.
- ◆ Accent lighting allows for a multitude of atmospheres.
- ◆ Near floor-to-ceiling windows provide an abundance of natural light and immersive views to the outdoors.
- ◆ A 57" x 75" Murphy bed system transforms the area into a luxurious master bedroom.
- ◆ Multiple Touchscreen controls add new levels of convenience to the RVers experience.
- ◆ Road cooking enthusiasts will enjoy the large galley with large countertop and flip-down extension, and premium appliances like the new Dometic 10 Series fridge.
- ◆ The dinette comfortably seats four around a removable table, and conveniently converts into an optional bed system.

Cabinetry



Espresso Brown
Shown with Bianco White Fenix Glamour Upgrade



Chestnut Cherry
Shown with Bianco White Fenix Glamour Upgrade

Ultraleather™



Fog



Earth



Mountain

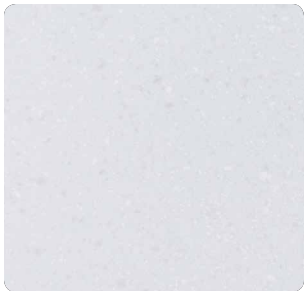


Sierra Maple
Shown with Bianco White Fenix Glamour Upgrade

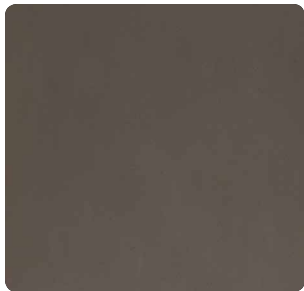


Cashmere (Exclusive to the Unity Rear Lounge)
Shown with Bianco White Fenix Glamour Upgrade
Concept model shown. Blue Ultraleather® not available.

Corian®



Antarctica



Stone

Wheels



Steel Wheels
Standard – With Wheel Simulators



Alcoa Dura-Bright® Aluminum Wheels
Optional – All 6 Aluminum Wheels,
4 Dura-Bright® Wheels

Floorplans



U24FX | FX



U24MB | Murphy Bed
(Shown with standard Leisure Lounge)



U24CB | Corner Bed
(Shown with Standard Dinette)



U241B | Island Bed



U242TB | Twin Bed



U24RL | Rear Lounge



Bordeaux



Champagne



Denim



Euro Sport



Glacier



Graphite



Silver



White Suede

SPRINTER CHASSIS	MB/FX	CB	IB/TB	RL
Chassis – Mercedes-Benz Sprinter 3500 Cab w/ 3L V6 Turbo Diesel 188 hp/325 ft-lb w/ 7G-Tronic Automatic Transmission	S	S	S	S
Advanced Safety Features - Active Brake Assist, Active Lane Keeping Assist, Active Distance Assist Distronic, Attention Assist, Traffic Sign Assist	S	S	S	S
Air Conditioning with Auto Climate Control	S	S	S	S
Alternator – 220A	S	S	S	S
Concealed Fuel Filler	S	S	S	S
Crosswind Assist	S	S	S	S
Dual Rear Wheels	S	S	S	S
Electronic Stability Controls	S	S	S	S
Exterior Courtesy Lights	S	S	S	S
* LED Performance Headlights with High Beam Assist & Fog Lamps with Cornering Light Function	S	S	S	S
Light and Rain Sensors	S	S	S	S
Mercedes-Benz Chrome Grill	S	S	S	S
Mirror – On Passenger Side Sun Visor	S	S	S	S
Mirrors – Heated Remote Exterior with Convex	S	S	S	S
Multi-Function Steering Wheel	S	S	S	S
Multimedia Center – MBUX In-Dash AM/FM/SiriusXM Ready/Navigation/Bluetooth c/w Rear View Camera, 10.25" Touch Screen, Voice Control, Android Auto, Apple CarPlay	S	S	S	S
Power Windows and Door Locks w/ Keyless Entry	S	S	S	S
Rear Hitch Receiver w/wiring – 500 / 5000 lb (Brake/ Turn/Tail Lights)	S	S	S	S
Removable Carpeted Floor Mat w/ Rubber Backing	S	S	S	S
Seats – Genuine Mercedes-Benz DS/PS Swivels, Power/ Programmable, Ultraleather™, Heated	S	S	S	S
Speed-Sensitive Electric Power Steering (EPS)	S	S	S	S
Tilt/Telescopic Steering Wheel	S	S	S	S
Wheel Simulators	S	S	S	S
VEHICULAR	MB/FX	CB	IB/TB	RL
2-Year Roadside Assistance	S	S	S	S
Chassis Battery Disconnect	S	S	S	S
Powder Coated Steel Undercarriage Support Structure	S	S	S	S
AWNING PACKAGES	MB/FX	CB	IB/TB	RL
Power Legless Box Awning w/ LED Lights	S	S	S	S
Slide Topper Awning	S	S	-	-
Wind-Sensor Auto Retract	S	S	S	S
CONSTRUCTION	MB/FX	CB	IB/TB	RL
Floor – Steel Framed Vacuum Bonded Insulated	S	S	S	S
Roof – Domed Vacuum Bonded Aluminum Framed Insulated FRP Flexroof	S	S	S	S
Sidewalls – Contoured Vacuum Bonded Aluminum Framed Insulated with Gel Coat Fiberglass	S	S	S	S
Slideout	S	S	-	-
Windows – Frameless Tinted Awning Style	S	S	S	S
ELECTRICAL	MB/FX	CB	IB/TB	RL
Battery – Dual 6V AGM Coach Batteries (Maintenance Free)	S	S	S	S
Dometic IoT Touchscreen System	-	-	-	S
GFI Receptacle – 110V – Patio, Galley, Lavatory	S	S	S	S
Inverter – 2000W Pure Sine c/w 80 Amp Battery Charger	S	S	S	S
Monitor Panel – Tanks, LP, and Battery Levels	S	S	S	-
CERTIFICATION	MB/FX	CB	IB/TB	RL
Canadian Certification – Mandatory for Canada	O	O	O	O
RVIA Certification	S	S	S	S

EXTERIOR	MB/FX	CB	IB/TB	RL
Assist Handle – Lit	S	S	S	S
Baggage Doors – Fiberglass with Top Continuous Hinge c/w Latches and Gas Struts	S	S	S	S
Entry Door – Contoured w/ Screen Door & Window	S	S	S	S
Entry Step – Retractable Power	S	S	S	S
Large Rear Pass-Thru Storage Compartment	-	-	S	-
Paint – Full Body w/ Clear Coat w/ Color Matched Front Bumper	S	S	S	S
Patio Light – LED w/ Interior Wall Switch	S	S	S	S
Water Pump Switch in Utility Center	S	S	S	S
INTERIOR	MB/FX	CB	IB/TB	RL
Assist Handle – Ultraleather™ Wrapped with Light	S	S	S	S
Cabinets – Curved Soft Close Upper Cabinet Doors w/ Hidden Catch	S	S	S	S
Ceiling – Padded Vinyl Headliner	S	S	S	S
Drawers – Full Extension Ball Bearing Tracks – Self Locking (Soft Close Tracks on RL)	S	S	S	S
Flooring – Tile Look Vinyl Flooring	S	S	S	-
Flooring – Woven Vinyl Flooring	-	-	-	S
Lighting – Dimmable LED Lighting w/ LED Under Cabinet and Accent Lights	S	S	S	S
Privacy Drape in Cab	S	S	S	S
Shades – Day/Night Roller w/ Ultraleather™ Valances (No Valences in RL)	S	S	S	S
Skylight – Opening Skylight w/ Screen and Privacy Shade	S	S	S	S
HEATING, VENTILATING & AC	MB/FX	CB	IB/TB	RL
AC – 15,000 BTU Ducted w/ Heat Pump	S	S	S	S
Fan – Non-Reversible Thermal Controlled in Galley	S	S	S	S
Furnace – 16,000 BTU Ducted Furnace	S	S	S	S
FURNITURE	MB/FX	CB	IB/TB	RL
Bed – 52" x 76" w/ Residential Quality Mattress	-	S	-	-
Bed – 57" x 75" w/ Residential Quality Mattress	-	-	-	S
Bed – 58" x 74" (U24B) w/ Residential Quality Matt.	-	-	S / -	-
Bed – Two 34" x 76" Twin Beds or 88" x 76" King Bed (U24TB) w/ Residential Quality Matt.	-	-	- / S	-
Booth Dinette w/ Easy Lift Dinette Table	-	S	-	-
Leisure Lounge Express – Ultraleather™ w/ Folding Table	-	-	S	-
Leisure Lounge w/ Murphy Bed (68" x 76") and Flip-Down Table	S	-	-	-
Rear Sofa – Fabric with Hidden Ottoman/Table	- / S	-	-	-
Rear Sofa – Ultraleather Rear Sofa c/w 2 Power Recliners	-	-	-	S
GALLEY	MB/FX	CB	IB/TB	RL
Accessory Channel	S	S	-	-
Backsplash – Stainless Steel	S	S	S	S
Cooktop – LP – Flush Mount w/ Glass Cover	S	S	S	S
Countertop – Corian® Solid Surface	S	S	S	S
Flip Up Counter Extension	S / -	-	S	S
Garbage Can – Recessed w/ Flush Lid	S	S	S	S
Oven – Stainless Steel Convection Microwave	S	S	S	S
Pantry – Large Pullout	S	S	S	S
Refrigerator – Dometic RMD10 Series – 2-Door, 3-way, 6.7 ft³ Fridge/Freezer, Stainless Steel Look Door, Doors Open From Either Side	S	S	S	S
Sink – Large Undermount Stainless Steel Sink w/ Cover	S	S	S	S

ENTERTAINMENT	MB/FX	CB	IB/TB	RL
Satellite Dish Pre-Wire	S	S	S	S
Smart Blu-ray Player w/ Bluetooth Sound Bar	S	S	S	S
Sound Bar with Subwoofer	S / -	-	-	-
TV – 24" LED in Bedroom	- / S	S	S	-
TV – 28" LED	- / S	S	S	S
TV – 32" LED in Lounge/Bedroom	-	-	-	S
TV – 40" LED w/ TV Lift	S / -	-	-	-
USB Outlet – In Bed and Living Areas	S	S	S	S
Wi-Fi Extender – Winegard ConneCT 2.0 Wi-Fi + 4G LTE + Integrated TV and Radio Antenna	S	S	S	S
LAVATORY	MB/FX	CB	IB/TB	RL
Accessory Channel	S	-	S	S
Fan – Power Bath Vent	S	S	S	S
Medicine Cabinet	S	S	S	S
Shower – With Grab Handle, c/w Door & Skylight	S	S	S	S
Sink – Stainless Steel (Solid Surface in MB)	S	S	S	S
Water Pump Switch on Vanity	S	S	S	S
Toilet – Ceramic– with Macerator	-	-	S	S
Toilet – Ceramic – Foot Flush with Sprayer	S	S	-	-
PLUMBING & LP SYSTEMS	MB/FX	CB	IB/TB	RL
Black Tank Flush	S	S	S	S
Exterior Shower	S	S	S	S
LP Tank w/ Electric Shut Off	S	S	S	S
Pick Up Kit – Antifreeze	S	S	S	S
Quick Connect BBQ LP Outlet	S	S	S	S
Water Filter System	S	S	S	S
Water Heater – Truma AquaGo Comfort Plus	S	S	S	S
Shower Water Shut-Off Valve	S	S	S	S
OPTIONAL FEATURES	MB/FX	CB	IB/TB	RL
Alcoa Dura-Bright® Aluminum Wheels (4 Wheels Dura-Bright®, All 6 Aluminum)	O	O	O	O
Exterior Ladder	O	O	O	O
Exterior Table	O	O	O	O
Fan Upgrade – w/ Rain Sensor in Galley & Lavatory	O	O	O	-
Fenix NTM® Matte Upper Cabinet Door Upgrade	O	O	O	O
Generator – 3.2 KW Onan Diesel	O	O	O	-
Generator – 3.6 KW Onan LP w/ Auto Start	O	O	O	O
Jacks – Stabilizer Electric (2 Only)	O	O	O	O
Jacks – 4-Point Hydraulic Self-Leveling	O	O	O	O
Leisure Lounge Plus w/ Murphy Bed (68" x 76") & 2 Rotating Power Recliners	O / -	-	-	-
Macerator – Termination w/ Manual Disconnect	O	O	O	O
Remote Keyless Entry – Coach Entry Door	O	O	O	O
Removable Front Table between Captain Chairs	O	O	-	-
Safe (6" x 10.8" x 7.3")	O	O	O	O
Satellite Dish – Winegard Road Trip T4 (DirectSD, DishHD, BellHD)	O	O	O	O
Solar Panel – 200 W	O	O	O	O
Solar Panel – 400 W	O	O	O	O
Surge Protector	O	O	O	O
Ultraleather™ Rear Sofa Upgrade	- / O	-	-	-
U-Lounge Dinette	-	O	-	-

* Select Chassis



SPECIFICATIONS	U24IB/TB	U24CB	U24MB/FX	U24RL
GVWR – lb (kg)	11,030 (5003)	11,030 (5003)	11,030 (5003)	11,030 (5003)
Wheelbase – in (mm)	170" (4326)	170" (4326)	170" (4326)	170" (4326)
Length – ft (mm)	25'1" (7645)	25'1" (7645)	25'1" (7645)	25'1" (7645)
Width – ft (mm)	7' 11" (2416)	7' 11" (2416)	7' 11" (2416)	7' 11" (2416)
Height Inc. A/C – ft (mm)	10'6" (3200)	10'6" (3200)	10'6" (3200)	10'6" (3200)
Interior Height – ft (mm)	6'5" (1958)	6'5" (1958)	6'5" (1958)	6'5" (1958)
Fresh Water Capacity – Gal. (L)	30 (114)	30 (114)	25 (95)	25 (95)
Black Holding Tank Cap. – Gal. (L)	29 (110)	29 (110)	29 (110)	29 (110)
Grey Holding Tank Cap. – Gal. (L)	37 (140)	37 (140)	37 (140)	37 (140)
Fuel Capacity – Gal. (L)	24.5 (93)	24.5 (93)	24.5 (93)	24.5 (93)
Propane Capacity – Gal. (L)	15 (57)	15 (57)	15 (57)	15 (57)
Exterior Storage Capacity	63/54ft³	36 ft³	55/34 ft³	30 ft³

All capacities in US Gallons. Feature list may not be complete.
Please visit leisurevans.com for a comprehensive list of standard & optional equipment.

Triple E Recreational Vehicles

301 Roblin Blvd, Winkler, MB, Canada, R6W 4C4. Telephone: 1-204-325-4361 Toll-Free: 1-877-992-9906 Fax: 1-204-325-5241

Leisure Travel Vans is a brand of Triple E Canada Ltd. Product improvement is a continuing process at Triple E RV. We reserve the right to change specifications, standards and options on any and all products without prior notice; errors and omissions excepted. Triple E RV is under no obligation to undertake modifications to units manufactured prior to changes in specifications. Units may be shown with optional equipment. Photo accessories are not included. Brochure printed in Canada. 08/2019.



TWO-YEAR LIMITED WARRANTY

Leisure Travel Vans is proud to offer a two-year (24,000 miles/40,000 km) limited coach warranty and a three-year limited warranty on structure. Please see your dealer for further details.



ROADSIDE ASSISTANCE

Every new Leisure Travel Van purchase includes a two-year fully paid roadside assistance, emergency road service, and special warranty support benefits that follow you throughout Canada and the USA. Services include: flat tire changes, towing, mobile mechanic, RV technical support, lock-out service, fuel delivery, jump-starts, service appointments and more.



MYLTV

MyLTV is the online home for Leisure Travel Vans owners. Within your customized MyLTV dashboard you can learn more about your RV, join a Travelers Club, connect with other owners, earn rewards, view upcoming events and more! Visit leisurevans.com/myltv to sign up.

