



**FIVE STAR RATING
FOR OVER 15 YEARS**

NEW 102 EXCD LIMITED EDITION



- *Personal Care*
- *Quality Workmanship*
- *Industry Leading 6 Year Structural Warranty*
- *Built for Canadian Winters*
- *Lightest Four Season Camper*

NORTHERN *Lite*

TOP 10 REASONS TO BUY A NORTHERN LITE SLIDE-IN TRUCK CAMPER

1 Two piece fiberglass clam shell truck camper design is built like a boat with only one seam making it one of the lightest four season truck campers on the market.

2 Northern Lite fiberglass truck campers are built with chopped fiberglass and reinforced fiberglass mat, so no additional wood or aluminum framing is required, making them 25% lighter than conventional truck campers and results in the campers not being top heavy like a conventional built truck camper.

3 All Northern Lite slide-in truck campers come with our industry-leading six year structural warranty and are the only 5 Star rated slide-in truck camper in all of North America.

4 All Northern Lite truck campers are built with solid plywood cabinets with solid hardwoods and paneling. No press board or photo finish panels are

used. Nine-ply Russian birch is used in all drawers with full extension roller bearing drawer glides.

5 All models are insulated using block foam insulation on the floor, walls, and ceilings with double insulation under the cab over bed (the largest cab over bed of any fiberglass truck camper).

6 Unlike our competition, our campers actually weigh what we say they weigh not what we wished they weighed.

7 All jack brackets are under mounted (both front and rear) so the entire camper is lifted instead of putting all the stress on the front and back walls and made of aluminum so they won't rust.

8 Molded design improves aerodynamics, which results in better fuel mileage and handling, as well it creates roofs corners and edges that won't leak like our competitors. High-end gel coat finish along with only one seam makes it a very easy truck camper to maintain.

9 All Northern Lite truck campers come standard with a 100 watt solar panel and 30 amp digital solar regulator, LED lighting inside and out, thermal pane windows and skylights.

10 Best built four season truck camper in North America, taking you places other truck campers can't go.



Northern Lite holds the distinction of producing North America's ONLY campers to achieve a

FIVE STAR RATING

for over 15 years running in the RV Rating Book as listed by the RV Consumer Group
P.O. Box 520, Quilcene, Washington, 98376
www.rv.org

What is a 5-Star Rating?

According to the RV Rating Book, "To get a 5-star rating, a brand needs to have an 'excellent' record of performance in Value, Reliability and Highway Control, indicated by ratings of 90 or higher."

One of the factors in the Value rating is depreciation. A high score in this indicates less depreciation on a product over the years.

Reliability is based on used RV appraisals and letters, claims, and commentaries from customers as well as owner satisfaction polls.

Highway Control rating is based on the balance and handling of the product.

Performance also includes the manufacturer's willingness to stand behind their product.



FACTORY TOUR

Northern Lite Campers are built using fiberglass molds in a process similar to building a fiberglass boat.

Only one seam on all Northern Lite Campers



NEW FACTORY



STEP 1

After a layer of Gelcoat is applied to the interior of the mold, a mixture of "chopped" fiberglass strands and a plastic resin is sprayed on top of the Gelcoat to form a very rigid, strong and light weight molded shell.



STEP 2

Once both the top and bottom are pulled out of the molds, the top shell is placed over the bottom shell which has a plywood lip along its top.



STEP 3

The top is screwed onto the bottom shell through this plywood lip. Using a metal molding, a vinyl insert is then used to cover up stainless steel screws.



STEP 4

The camper then proceeds to the assembly line where openings for doors, windows, and exterior compartments are cut out and assembly begins.

FACTORY TOUR



STEP 5

As the camper moves down the assembly line, cupboards, cabinets and appliances are installed and the exterior is completed.



STEP 8

Before it leaves the Northern Lite Factory, each camper is individually weighed and the actual weight is noted inside the camper.



STEP 6

At the Final Inspection station, final finishing is completed and quality and systems checks are carried out.

STEP 9



STEP 7

Air pressure testing is the final test before the camper leaves the assembly line.



The finished camper is now ready to ship to one of our over 30 Authorized Dealers throughout North America.

NEW LIMITED EDITION SERIES

We have taken our top of the line Special Editions to the next level. They can be ordered for a limited time in all our current sizes with both wet and dry bath and U Shape and face-to-face dinettes.



SHOWN ON 2019 F-350



811 EXLE WET BATH



These campers offer all the features of our Special Edition Series campers, and include these exclusive offerings:

- Premium leatherette seating
- Solid sapele hardwood table
- Dual 100 watt solar panels
- S5-Dometic windows
- Outside speakers
- Raised chrome graphics
- Rain sensor Fantastic Fan with remote
- 811 EX LE and 96LE also come with air conditioning and microwave

10 2 EXCD SPECIAL EDITION



BUMPER PATIO STANDARD ON SPECIAL EDITIONS



Pull Out Pantry

Interior of 10'2 SE showing Dometic Skylight and 24" LCD TV in bunk area and Dometic Acrylic Thermal pane Window in kitchen area.

DISTINCTIVE FEATURES OF THIS SPECIAL EDITION

- Upgraded Dometic thermal pane acrylic windows
- 10' Side awning
- Additional battery box
- Battery disconnect switch
- Sliding propane tray
- Rear bumper patio c/w step
- Wireless remote electric jacks
- Removable carpet
- Stereo CD/DVD player
- 24" LCD television c/w autorazor antenna
- Dometic thermal skylight
- Microwave (in cupboard)
- Pull-out pantry
- Optional U shape dinette
- Privacy drape
- Bedspread
- Queen size bed (60x80)
- Hypervent mattress pad
- Optional dry bath
- Roof air conditioner
- Four season heated tanks
- 100 Watt solar panel c/w 30 amp regulator
- 2200 Fantastic fan
- 7' Power rear awning
- LED interior lighting
- 3 Stage battery charger
- Sliding basement tray

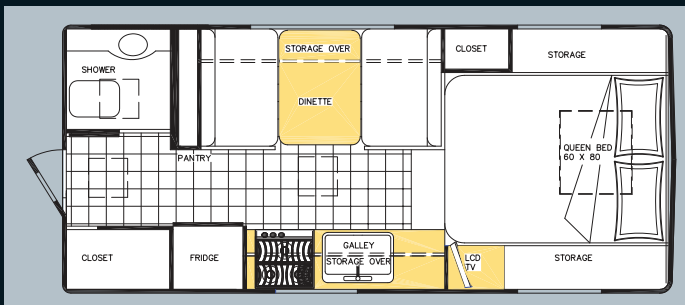


Very low step into bed; highest headroom above cab over bed of any camper



New Basement Tray

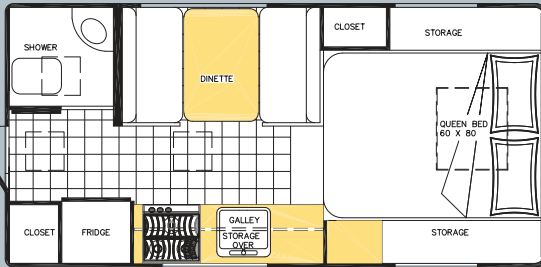
Dometic Acrylic Thermal Pane Windows are 50% lighter than conventional Thermal Pane Windows and have a higher R value.



9 6 Q CLASSIC SPECIAL EDITION

CLASSIC SPECIAL EDITION FEATURES

- 10' Side Awning
- Wireless Electric Jacks
- Power 7' rear awning
- Removable Carpet
- Heki Thermal Skylite
- 24" LCD TV c/w auto tracking antenna
- Bumper Patio
- Bedsread
- Hypervent mattress pad
- 2200 Fantastic Fan
- CD DVD Player
- Sapele Hardwood
- LED interior lighting
- Optional U Shape Dinette
- 3 Stage battery charger
- New larger bunk windows
- 100 Watt solar panel c/w 30 amp regulator
- Four season camper
- Heated tanks



8 11 EX WET BATH SPECIAL EDITION

STANDARD FEATURES

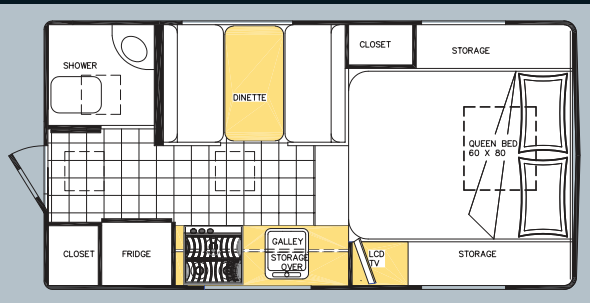
- 10' Side awning
- Wireless electric jacks
- 7' Power rear awning
- Removable carpet
- Heki thermal skylight
- 24" LCD TV c/w digital auto tracking antenna
- CD/DVD player
- Privacy curtain
- Bumper patio
- Bedspread package
- Hyper vent mattress pad
- 2200 Fantastic Fan
- Sapele hardwood
- 100 Watt solar panel c/w 30 amp regulator
- LED interior lighting
- 3 Stage battery charger
- Optional u-shape dinette
- New larger bunk window
- Four season camper
- Heated tanks
- Sliding basement tray
- Longest dinette bed for short box truck camper



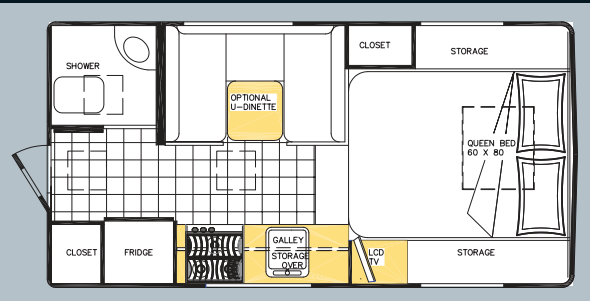
OPTIONAL U-DINETTE SEATING



With face to face dinette



With optional u-dinette



8 11 EX DRY BATH SPECIAL EDITION

STANDARD FEATURES

- Dry bath shower
- Dometic thermal windows
- 100 Watt solar panel c/w 30 amp regulator
- LED interior lighting
- 2200 Fantastic Fan
- Four season camper
- Sliding basement storage tray
- Patio bumper step
- Power 7' rear awning
- 10' Side awning
- 24" LCD TV
- Razor automatic TV antenna
- Optional u-shape dinette
- Expanding shower rod
- Same shower as optional 10-2 EXCDSE dry bath



SPORTSMAN EDITION



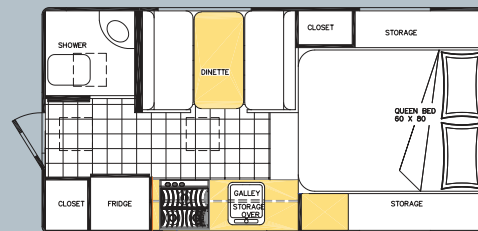
9'6" SPORTSMAN

STANDARD EQUIPMENT

- Battery disconnect switch
- Monitor panel
- Ladder – must order bumper step
- Outside shower
- Propane auto changeover
- 12 volt Bathroom vent
- 6.3 cu ft 3 way fridge
- 18,000 BTU auto light furnace
- Power range hood
- 3 Burner stove top
- Glass stove top cover
- 2x20lb Propane cylinders
- 45 Amp converter c/w battery charger
- Bathroom c/w shower
- Fresh water toilet c/w holding tank
- Sapele cabinets and trim packages
- Sapele veneer paneling
- LED light package
- Glass thermal windows
- 100 Watt solar panel c/w 30 amp regulator
- Basement tray
- Bedsprad package
- Hyper vent mattress pad
- Marine headliner
- Screen door
- Heki thermal skylight
- Remote controlled electric jacks
- Folding assist handle
- Face to face dinette
- Full Queen (60"W x 80"L)
- 10" Heated basement storage
- Hot water heater – DSI
- Heated and insulated tanks
- Sliding propane tray
- Extra large, stainless steel sink
- Extra large (dual) battery box
- Standard bumper step

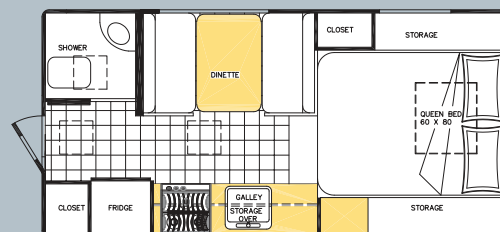
OPTIONAL EQUIPMENT

- Air conditioner
- 10' Side awning
- 7' Overdoor power awning (factory order only)
- Boat rack
- Factory pickup
- 2200 Fantastic fan
- Happijac – dually brackets
- LCD TV screen (c/w swing out arm)
- Microwave
- Privacy drape
- Cab thru window
- Stereo speakers only (4)
- Stereo CD/DVD player (c/w 4 speakers)
- Auto razor TV antenna
- Rear bumper patio



8'11" Q Sportsman Series

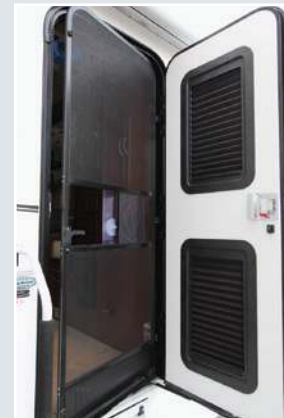
With face to face dinette · Fits full size short box trucks



9'6" Q Sportsman Series

With face to face dinette · Fits full size long box trucks

New Standard door on all models



CAMPER SPECIFICATIONS

	Sportsman Wet 8'11" EX	Sportsman Dry 8'11" EX	9'6" Sportsman 8'11" EX	8'11" EX Wet-SE	8'11" EX Dry-SE	Wet-Bath/Dry Bath 9'6" Q SE	10'2" EX-Dry-SE Wet Bath	8'11" EX LE Wet Bath	8'11" EX LE Dry Bath	9'6" Q LE Wet-Bath/Dry Bath	10'2" EX-Dry-SE Wet Bath
Center of gravity (inches)	39.5	39.5	42.5	39.5	39.5	42.5	48	39.5	39.5	42.5	48
Overall width (inches)	98	98	98	98	98	98	98	98	98	98	98
Overall length (inches)	195	195	198	195	195	198	218	195	195	198	218
Overall floor length (inches)	108	108	110	108	108	110	131	108	108	110	131
Overall height (inches)	94	94	94	94	94	94	106	100	100	100	106
Interior headroom (feet-inches)	6-4	6-4	6-4	6-4	6-4	6-4	6-8	6-4	6-4	6-4	6-8
Dinette bed (inches)	37x72	37x67	37x74	37x72	37x67	37x74	40x75	37x72	37x67	37x74	40x75
Table size (inches)	26x38	26x38	29x38	26x38	26x38	29x38	29x38	26x38	26x38	29x38	29x38
Mattress size (inches)	60x80	60x80	60x80	60x80	60x80	60x80	60x80	60x80	60x80	60x80	60x80
Fresh water capacity (US gallons)	39	39	39	39	39	39	42	39	39	39	42
Waste tank (US gallons)	13	12.5	13	13	12.5	13	18	13	12.5	13	18
Gray tank (US gallons)	24	24	24	24	24	24	40	24	24	24	40
Hot water tank (US gallons)	6	6	6	6	6	6	6	6	6	6	6
Propane gas capacity (lbs)	40	40	40	40	40	40	40	40	40	40	40
Approximate dry weight (lbs)	2360	2360	2380	2650	2650	2675	3265	2800	2800	2825	3285

Water capacity includes hot water tank. We reserve the right to change specifications without notice of consequence.

All Northern Lite products carry, in addition to the standard manufacturer's one year warranty, an inclusive six year structural integrity warranty.





Northern Lite holds the distinction of
producing North America's
ONLY campers to achieve a

FIVE STAR RATING

for over 15 years running in the RV Rating Book
as listed by the RV Consumer Group
P.O. Box 520, Quilcene, Washington, 98376
www.rv.org

NORTH AMERICA'S LIGHTEST FOUR SEASON CAMPERS NOW COME STANDARD WITH SOLAR PANELS AND LED LIGHTING

Your Authorized Dealer:

NORTHERN *Lite* 

*Northern Lite reserves the right to make changes to
features and options without notice.*

Northern Lite Mfg. Ltd.
322 Totom Avenue
Kelowna, B.C.
Canada V1X 5W6

Telephone (250) 765-3702
Fax (250) 765-3708
Toll Free 1-800-887-5342

E-mail: info@northern-lite.com
www.northern-lite.com



PRINTED IN CANADA