

KINGSPORT Ultra-Lite

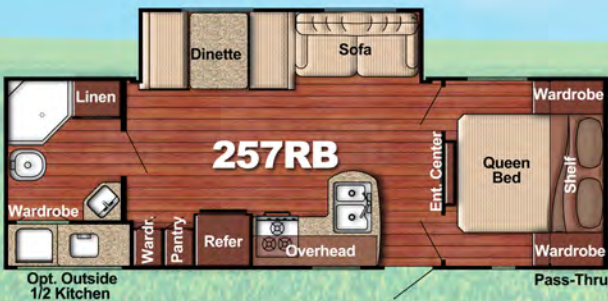
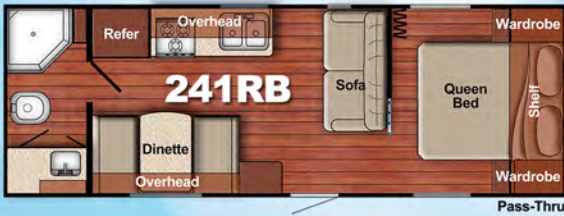
Reliable, Fuel-Efficient
Family-Friendly Travel Trailers



Ultra-Lite: The Standard Features you want:

- One-Piece Seamless Roof w/12-Year Warranty
- Lower Front Diamond Plate
- Radius Entry Door w/Window
- Radius Safety Glass Windows
- Electric Brakes
- Tubular Steel Cambered Frame
- Floor Joists 13" On Center
- Floor Decking screwed & glued
- Wall Studs 16" O.C. or better
- Tapered Roof Rafters
- (2) 20 lb. LP Bottles w/Cover
- Fiberglass Insulation hand-cut & glued in place
- 30-Amp Service w/45-Amp Power Converter
- Pre-Wired for Air Conditioner
- Woodgrain Vinyl Flooring
- Easy-Care Vinyl Lined Drawers
- Hardwood Drawer Fronts & Cabinet Doors
- Mortise & Tenon Joints
- Roller-Bearing Drawer Guides
- Fabric-Wrapped Box Valances
- 3-Burner Gas Range
- Power Range Vent Hood
- Kitchen Sink w/Hi-Arc Faucet
- Microwave-Ready
- Dometic Refrigerator/Freezer
- Foot-Flush Toilet
- Skylight & Power Vent in Bath
- Cable/Satellite Ready
- Tank Level Monitor Panel
- LP Leak Detector
- Smoke Detector
- Mini-Blinds throughout
- Queen Bed w/Innerspring Mattress & Bedspread
- Bed Lifts for under-bed Storage
- Easy-Care Wall Vinyl
- Laminated Countertops
- 16,000 BTU Gas Furnace
- Ceiling Ducts for A/C Option (N/A 218MB, 248BH)
- Pass-Through Storage (most models)
- Wall-Mount Fire Extinguisher

Ultra Lite Floor Plans:



Specifications:

Model	Length	Width	Height	Int Hgt	Base Dry Wgt (lbs)	Hitch Wgt (lbs)	Nt Carry Cap (lbs)	Fresh Wtr (gal)	Grey/Black Tanks(gal)
218MB	22'7"	96"	9'10"	6'8"	3,685	400	3,715	30	36/36
238RK	27'11"	96"	11'1"	6'8"	4,815	640	2,865	30	36/36
241RB	26'5"	96"	9'10"	6'8"	4,031	478	1,828	30	36/36
248BH	26'11"	96"	9'10"	6'8"	3,899	500	3,601	30	36/36
250RL	30'11"	96"	11'1"	6'8"	5,664	790	2,126	51	36/36
255BH	29'1"	90"	11'1"	6'8"	4,880	620	2,879	51	36/36
257RB	28'1"	96"	11'1"	6'8"	5,512	740	2,228	30	36/36
259BH	29'1"	90"	11'1"	6'8"	4,900	550	2,650	51	36/36
268BH	29'6"	96"	11'1"	6'8"	5,177	660	2,483	30	36/36
274QB	32'3"	96"	11'1"	6'8"	5,802	720	1,918	30	36/36
279BH	32'3"	96"	11'1"	6'8"	5,273	730	2,457	30	36/36
281BH	33'0"	96"	11'1"	6'8"	6,230	820	2,410	30	74/36

The Kingsport Ultra-Lite Advantage: Simply Built Better!

1. One-piece seamless roof w/12 yr. warranty
2. Strong wood roof decking, screwed & glued
3. Thick energy-saving blankets of hand-cut fiberglass insulation in ceiling, walls & floors; insulation bonded to walls to prevent settling
4. Engineered wood rafters (Solid rafters in 218MB, 248BH)
5. "Attic" space for fiberglass insulation and air conditioning ducts (ducts n/a in 218MB, 248BH)
6. Galvanized steel straps to increase roof-to-sidewall & sidewall-to-floor strength
7. Sturdy wood wall studs 16" on center, set on floor & screwed in for maximum strength
8. Aluminum siding w/baked enamel finish
9. Butyl caulk for better seal, fewer streaks
10. Drip rail to direct rain runoff away from unit
11. Tough polymax underbelly overlaps sides & ends to protect against moisture & debris
12. Durable heavy-gauge vinyl floor covering
13. 5/8" floor decking screwed & glued to floor joists, 13" on center
14. I-beam steel frame (Tubular steel on Super Lite floor plans)
15. Full-width steel outriggers for superior strength and support

KINGSPORT Ultra-Lite



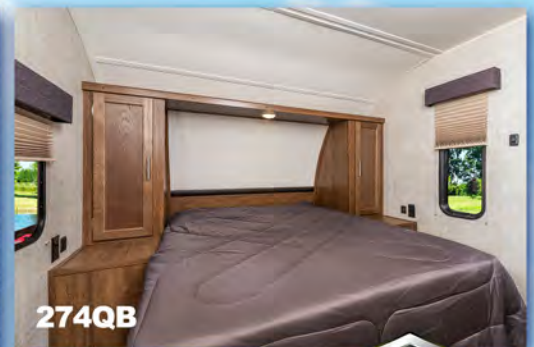
Visit www.gulfstreamcoach.com for more information!

Lite Value Package: (Included on every Ultra-Lite)

- LED Interior Lighting
- Electric Awning
- LED Awning Lighting (n/a 218MB, 238RK, 241RB, 248BH)
- Front Power Hitch Jack
- Blue Tooth Sound Bar w/Outside Speakers
- Pleated Shades in Living Room
- 13,500 BTU Air Conditioner
- Microwave Oven
- Digital TV Antenna w/Power Booster
- (4) Stabilizer Jacks
- 10.7 cu ft Double Door Everchill Refrigerator/Freezer
- 6 Gal DSI Water Heater
- USB Charging Ports
- Swing-Away Grab Handle
- Frosted Glass Window in Entry Door
- Designer Kitchen Backsplash
- Bath Skylight
- 4" x 1/4" Steel Header in Slide-Outs
- Pre-Wired for Solar Panel
- Backup Camera Prep

Popular Options:

- Spare Tire & Wheel
- Aluminum Wheels
- Solid Entry Step
- 1/2 Outside Kitchen (257RB, 274QB)
- Full Outside Kitchen (279BH)
- 6 Gal Gas/Elec 110V DSI Water Heater
- 3-Burner Range w/Oven
- 15K BTU Air Conditioner
- Outside Shower
- Outside Entertainment Center (No TV; 257RB, 268BH, 279BH)
- Murphy Bed (218MB, 248BH)
- Grey Fiberglass Exterior Walls



Our exclusive Gulf Stream Coach Warranty gives you **THREE YEARS** of coverage on key structural components of your new Kingsport Lite Ultra Lite (one year on Super Lite). That extended protection is also offered to Gulf Stream owners by many of the manufacturers that supply components for Kingsport Lite units, including the refrigerator, antenna, furnace, water heater, air conditioner, awning, range, microwave, and more. Check the full warranty statement for complete information and details.



