

LUXURY DESTINATION
TRAILERS

SIERRA

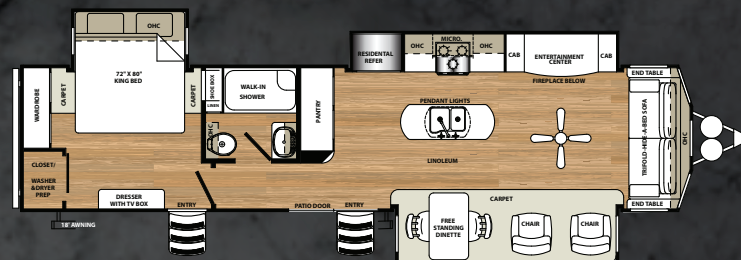




MULTI-FUNCTIONAL.

The 401FLX is the ultimate “open concept” floorplan. It offers opposing slideouts in the living area that creates a great floor space for relaxing. It also offers ample pantry space, washer/dryer prep and a great island kitchen. The “atrium” window layout on the door side offers you a great view of nature’s beauty.

401FLX



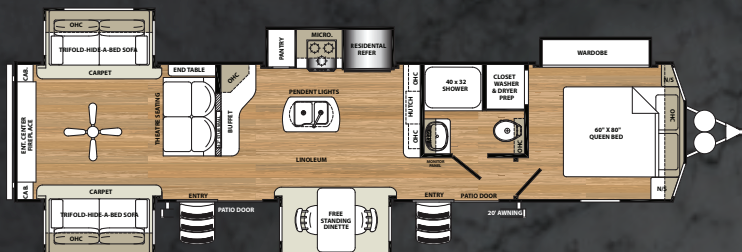
| BISQUE DECOR |



403RD

BREATHTAKING.

The 403RD is a lake side paradise. This floorplan offers two separate sliding glass patio doors to invite mother nature inside. Sunshine will be filling your unit with an abundant of natural light. The rear den entertainment allows ample space for entertaining. Two hide-a-beds and theater seating offer plenty of sitting space. The kitchen is equipped with an island, a full pantry and buffet style solid surface countertops. Along with a full walk in shower this unit offers a wardrobe slide for hanging clothes. This unit is also prepped to add a separate washer and dryer unit for those long stays. The 403RD is truly one of a kind.



| WALNUT DECOR |





INTERIOR FEATURES



A High rise faucet with undermount sink and pull out sprayer

B The upgraded and intricately detailed slide-out fascia

C Theater seats with LED lighting.

D Full extension, soft close ball bearing drawer guides

E The electric fireplace warms and is a great focal point for the living area

F QAV Control - One Touch control allows you to do everything from operating your awning and lights, to monitoring holding tank levels

G Enjoy the comfort of home with our exclusive Denver mattress

H Flatscreen LED HDTV with premium soundbar and DVD player



FREE PREMIUM PLUS PACKAGE (LIMITED TIME OFFER)



- Corian® premium solid surface kitchen countertops
- King WiFi extender
- Roller shades throughout
- Stainless steel gas oven

SIERRA

EXTERIOR FEATURES

GOURMET KITCHEN

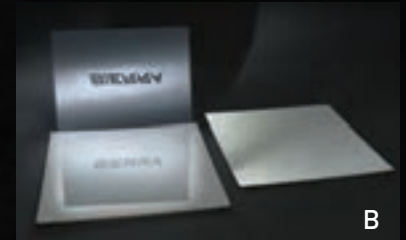
The Sierra gourmet kitchen includes a 20 cu. ft. stainless steel French door refrigerator with freezer, microwave and upgraded range.



EXTERIOR KITCHEN

The Sierra exterior kitchen includes hot and cold running water, refrigerator, microwave and swing arm bumper mounted grill.

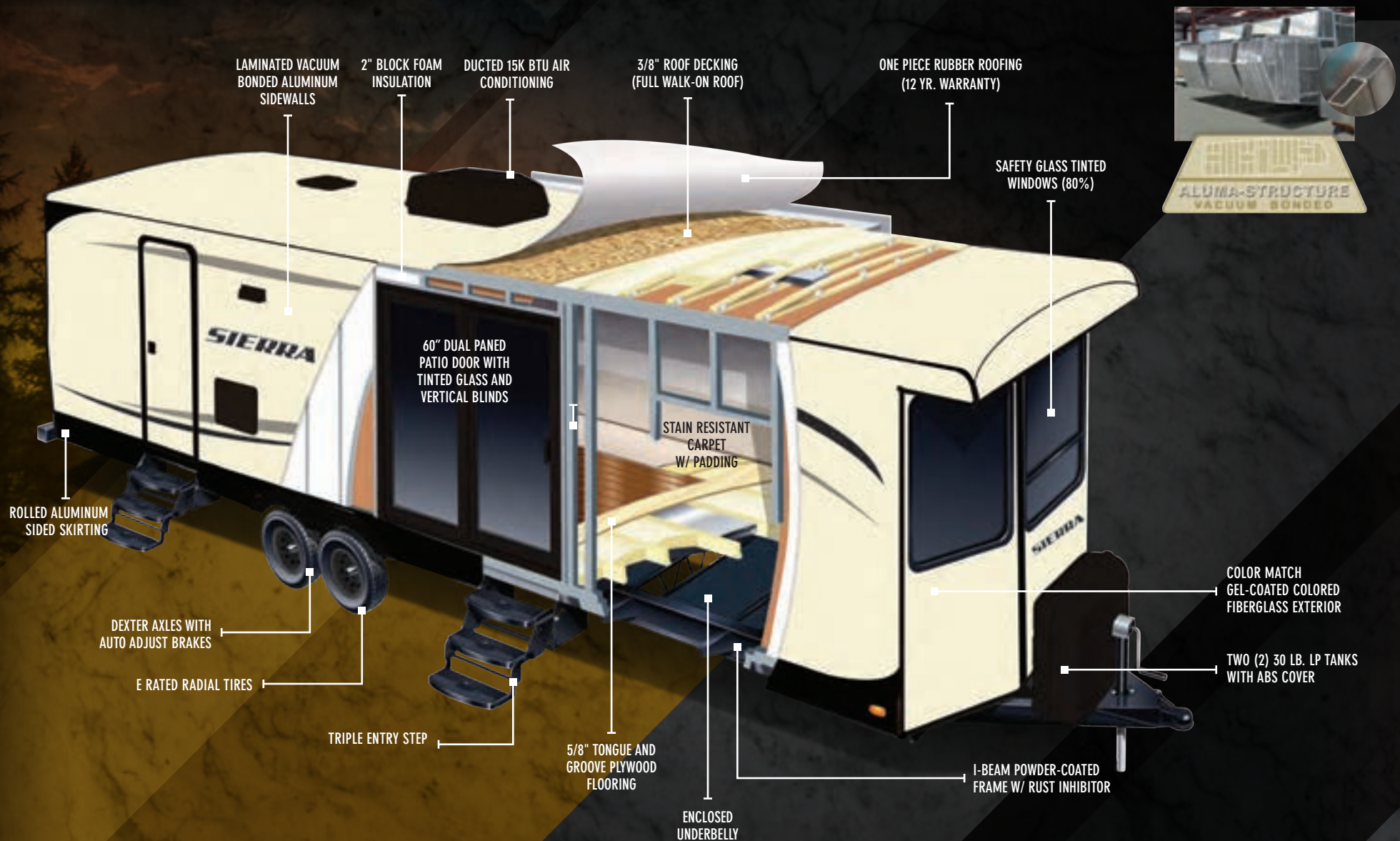
- A 60" dual paned patio door with tinted glass and vertical blinds.
- B Gel coated fiberglass protects from UV rays and prevents yellowing and cracking.
- C Wall mounted digital thermostat.
- D Two (2) 30 Lbs. LP tanks with ABS cover.
- E Triple entry steps.
- F Drip rail with extra long drip spouts help prevent black streaking.
- G Contemporary aluminum rims with E-rated radial tires. Most SIERRA's feature 7000 Lb. axles.
- H Enclosed underbelly protects your coach. improved airflow allows for a sturdy ride.



CONSTRUCTION

THE SIERRA SUPERSTRUCTURE

The SIERRA has a Welded Aluminum Superstructure that is regarded as the Industry's finest, pictured below is the heavier gauge aluminum tubing used by SIERRA vs. the competitions lighter gauge aluminum.



BISQUE DECOR

WALNUT DECOR

SIERRA DECORS, STANDARDS & OPTIONS

EXTERIOR FEATURES

- Gel coated color matched exterior fiberglass
- Enclosed and heated dump valves
- Large tinted windows with 80/20 UV prohibitor
- Dexter auto adjust brakes
- Radius triple steps with 9" riser (no pinched fingers)
- Dometic™ "One-Touch" electric awning with adjustable arms, and integrated LED light
- 16" Radial tires-E Rated
- Automotive-style fender skirts
- Hitch light
- Porch light with interior switch
- 30 lb. double LP tanks with auto change over
- 2 exterior speakers
- Rain gutters with extra long drip spouts (prevents black streaking)
- Exterior folding grab handle
- 60" Dual pane patio door

INTERIOR FEATURES

- 99" interior height with 6'4" slide heights
- Denver mattress
- Residential stain resistant carpet
- Rustic Plank pattern Beauflor® linoleum
- Swivel glider recliners (where applicable)
- Two color coordinated

interiors (Bisque, Walnut)

- Full extension ball bearing drawer glides
- Stainless steel under mounted kitchen sink
- Washer/dryer prep (select floorplans)
- Handmade cabinetry with screwed lumber core stile construction
- Residential countertops
- Recessed residential LED lighting throughout
- Colored shower surround with etched tile pattern
- Upgraded adjustable shower head with shelf
- Accent paneling in slideouts
- Accent lighting over dinette
- Walk-in shower (select models)
- Crown molding over kitchen cabinets
- Extra large picture windows throughout
- Vented side windows in slideouts
- TV antenna with booster
- Solid wood drawer fronts with birch sides
- Upgraded raised panel cabinet doors with designer rails
- Bedroom slideout fascia
- 20 cu. ft. stainless steel refrigerator
- Stainless steel kitchen package
- 40" LED HDTV
- Residential carpeting
- Trash receptacle in kitchen

- Designer window treatment accented per decor
- Ceiling fan
- Hide-a-bed sofa with tri-fold

APPLIANCES/ SYSTEMS

- Ducted 15K A/C
- Digital thermostat for living room and bedroom A/C
- Interior thermostat for heating and cooling
- Flush floor hydraulic slideouts (per floorplan)
- Satellite and cable hookup with RG-6 cable for high quality picture
- Porcelain foot flush toilets
- Full coach water filtration system
- 10 Gal. DSI water heater
- 65 Amp converter

CONSTRUCTION

- Welded aluminum-framed, vacuum bonded laminated superstructure
- 2" x 3" floor joists 12" on center
- 5/8" tongue & groove plywood floor decking
- 3/8" roof decking (full walk-on roof)
- Cambered powder coated frame with rust prohibitor
- Fully enclosed underbelly
- 5" truss roof rafters
- R-10 sidewall construction

POPULAR OPTIONS

- Free standing dinette IPO booth dinette (404QBWD)
- Detachable hitch
- All weather exterior kitchen (404QBWD)
- Hide a bed IPO glide sofa
- 2nd air conditioner in bedroom (ducted)
- Fantastic fan w/rain sensor in bunk room
- Fantastic fan w/rain sensor in kitchen
- Fantastic fan w/rain sensor in living room
- Fantastic fan w/rain sensor in bathroom
- Fantastic fan w/rain sensor in half bathroom
- Ceiling paddle fan w/wall switch 12V (bedroom only) (N/A 399LOFT)
- Heated holding tanks (12v)
- R-38e roof & all floors insulation
- Stab jacks (4)
- Roof ladder
- Slide room awnings (all slides)
- Theater seating IPO recliners (where available)
- Non self contained (no holding tanks w/ house type toilet)
- Central vacuum
- 2 Folding dinette chairs

YOUR SAFETY

- Smoke alarm
- Fire extinguisher
- Breakaway switch (battery hook-up required)
- Dead-bolt lock on entry door
- Liquid propane (LP) gas detector
- Fire escape windows

POLAR TECH PACKAGE

- Thermal pane windows
- Heated holding tanks
- R-38e roof & all floors insulation
- 40K BTU furnace

FREE PREMIUM PLUS PACKAGE (LIMITED TIME OFFER)

- Premium Corian solid surface kitchen countertops
- Roller shades throughout
- Gas cooktop with stainless steel oven
- King Wifi Extender System

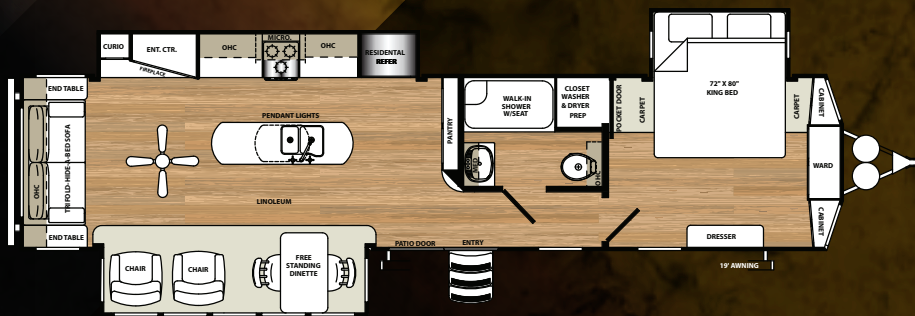
SIERRA SIGNATURE PACKAGE

- LED lighting throughout
- Denver pillowtop mattress
- 50 Amp service
- "One Touch" Dometic® electric awning w/LED lights
- Stainless steel kitchen package
- 15K BTU air conditioner with prep for second A/C
- Ceiling fan in living room
- 50 amp service
- Gel coated fiberglass exterior
- 10 gal. G/E water heater w/DSI
- Residential pullout kitchen faucet
- 20 Cu. Ft. stainless steel refrigerator
- Tinted dual paned patio door
- 40" LED HDTV (most models)
- Premium soundbar with DVD
- Washer/dryer prep (where available)
- Power fan in bathroom(s)
- Tri-fold hide-a-bed sofa
- Wood plank pattern Beauflor® linoleum

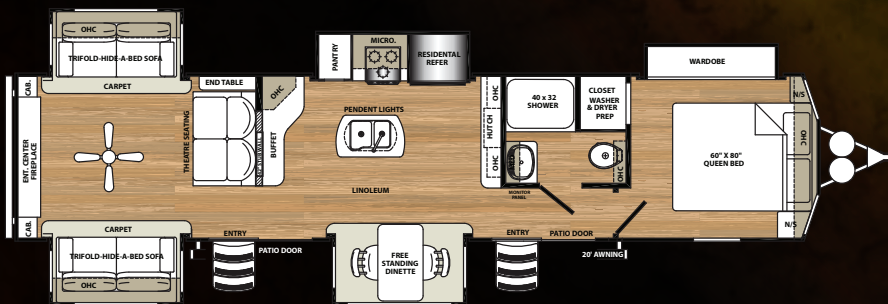
SIERRA

SIERRA

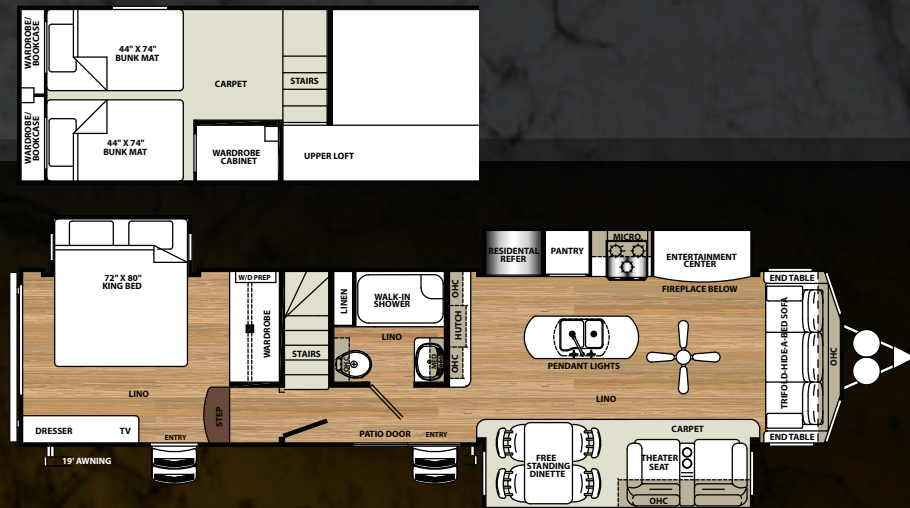
FLOORPLANS



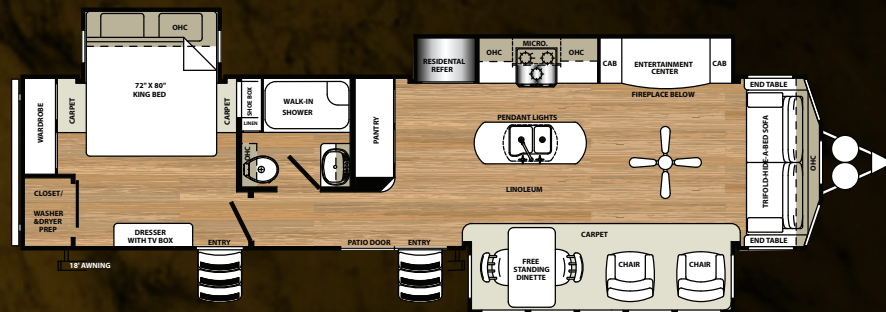
393RL



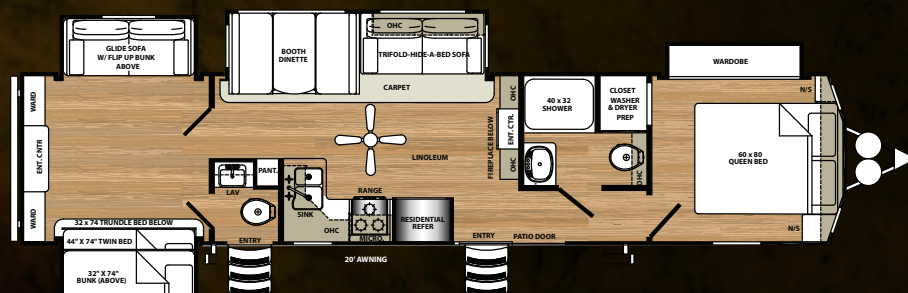
403RD



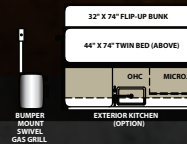
399LOFT



401FLX



404QBWD



EXTERIOR KITCHEN

The Sierra 404QBWD is available with an exterior kitchen that includes hot and cold running water, refrigerator, microwave and swing arm gas grill.



SPECIFICATIONS

MODEL	399LOFT	393RL	401FLX	403RD	404QBWD
HITCH	1,619	1,379	1,841	1,268	1,335
UVW	10,998	10,726	10,830	11,009	10,967
GVWR	13,619	13,379	13,841	13,268	13,335
CARGO	2,621	2,653	3,011	2,259	2,368
LENGTH*	40'11"	41'4"	40'7"	42'3"	42'2"
HEIGHT	13'2"	13'2"	13'2"	13'2"	13'2"
AWNING	19'	19'	17'	20'	20'
GRAY	104	104	156	104	104
BLACK	52	52	52	52	104
FRESH	60	60	60	60	60

* LENGTH BUMPER TO HITCH Please see back cover for more information regarding weights.



PRE-DELIVERY INSPECTION FACILITY

20,000 square feet of quality assurance. The bare essentials for a premium product. This state-of-the-art facility gives immediate daily feedback to production for quality assurance in every unit built.

FREE MEMBERSHIP
to Forest River Owners' Group



www.ForestRiverBuyLocal.com

GVWR (Gross Vehicle Weight Rating) - is the maximum permissible weight of the unit when fully loaded. It includes all weights, inclusive of all fluids, cargo, optional equipment and accessories. For safety and product performance do NOT exceed the GVWR.

GAWR (Gross Axle Weight Rating) - is the maximum permissible weight, including cargo, fluids, optional equipment and accessories that can be safely supported by a combination of all axles.

UVW (Unloaded Vehicle Weight)* - is the typical weight of the unit as manufactured at the factory. It includes all weight at the unit's axle(s) and tongue or pin and LP Gas. The UVW does not include cargo, fresh potable water, additional optional equipment or dealer installed accessories.

*Estimated Average based on standard build optional equipment.

CCC (Cargo Carrying Capacity)** - is the amount of weight available for fresh potable water, cargo, additional optional equipment and accessories. CCC is equal to GVWR minus UVW. Available CCC should accommodate fresh potable water (8.3 lbs per gallon). Before filling the fresh water tank, empty the black and gray tanks to provide for more cargo capacity.

** Estimated average based on standard build optional equipment

Each Forest River RV is weighed at the manufacturing facility prior to shipping. A label identifying the unloaded vehicle weight of the actual unit and the cargo carrying capacity is applied to every Forest River RV prior to leaving our facilities.

The load capacity of your unit is designated by weight, not by volume, so you cannot necessarily use all available space when loading your unit.

ALL INFORMATION CONTAINED IN THIS BROCHURE IS BELIEVED TO BE ACCURATE AT THE TIME OF PUBLICATION. HOWEVER, DURING THE MODEL YEAR, IT MAY BE NECESSARY TO MAKE REVISIONS AND FOREST RIVER, INC., RESERVES THE RIGHT TO MAKE ALL SUCH CHANGES WITHOUT NOTICE, INCLUDING PRICES, COLORS, MATERIALS, EQUIPMENT AND SPECIFICATIONS AS WELL AS THE ADDITION OF NEW MODELS AND THE DISCONTINUANCE OF MODELS SHOWN IN THIS BROCHURE. THEREFORE, PLEASE CONSULT WITH YOUR FOREST RIVER DEALER AND CONFIRM THE EXISTENCE OF ANY MATERIALS, DESIGN OR SPECIFICATIONS THAT ARE MATERIAL TO YOUR PURCHASE DECISION.



SIERRA



Learn More

Scan this barcode using a QR Reader on your smart phone to learn more about Forest River.



A Berkshire Hathaway company.

Forest River, Inc.
2012 Century Dr.
Goshen, IN 46528
(574) 389-4600
www.forestriverinc.com/Sierra
www.forestriveraccessories.com

YOUR LOCAL SIERRA DEALER