

Renegade  
RV

EXTREME LUXURY | EXTREME PURPOSE | EXTREME DURABILITY  
[www.renegaderv.com](http://www.renegaderv.com)

LEGENDARY RENEGADE QUALITY - 2019 VALENCIA

# VALENCIA

by Renegade



OUR VEHICLES CONNECT AND PROTECT  
PEOPLE AROUND THE WORLD EVERY DAY.  
[www.revgroup.com](http://www.revgroup.com)

**REV**  
Vehicles for life

LEGENDARY RENEGADE LUXURY - VALENCIA



The kitchen of the Valencia features solid Cherry hardwood cabinets with plenty of storage and soft closing drawers, and topped with LG HiMacs polished solid surface countertops. Standard appliances include a convection microwave, sealed 3-burner recessed cooktop, and a 19 Cubic Foot Whirlpool residential refrigerator with icemaker. Valencia 38BB Shown in Butter Rum Décor.



Valencia's contemporary design is comfortable and stylish, featuring warm tones and cool features. The furniture is as modern and sleek as it is comfortable. The unique slide-a-bed sofa converts easily to a queen size bed while the dinette folds into a cozy single sleeper. For extra overnights, the cabover 60 x80 queen bunk makes a great guest room, complete with its own LED TV (optional) and privacy curtains. VALENCIA 38RW is shown in Cracked Pepper Décor.

LEGENDARY RENEGADE LUXURY - VALENCIA



38BB in Cracked Pepper Décor



## VALENCIA LIVING SPACES

The thoughtful and functional design makes living and traveling in the Valencia a pleasure. From the high quality solid Cherry cabinetry to the comfortable ultra soft furniture, every inch of Valencia is a true Renegade. Valencia rides on the smooth, powerful, and fun-to-drive Freightliner S2RV chassis, the first Super C Chassis specifically designed for a luxury motorhome.



38BB in Iced Latte Décor

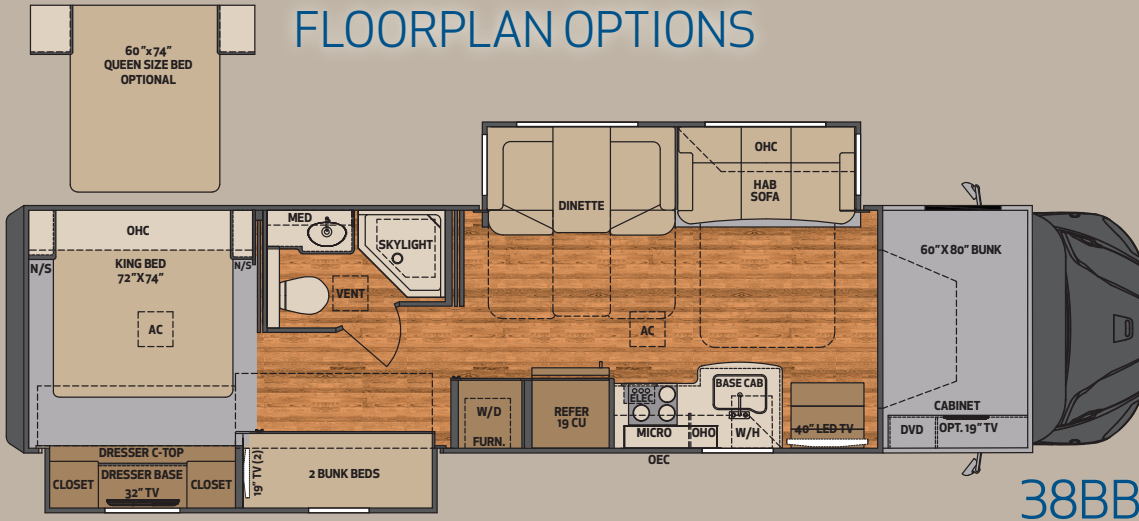


38BB in Iced Latte Décor



The Valencia master bedroom offers great storage, thoughtful design and first class accommodations. With a full rear wardrobe and a large dresser, you'll have space for all your travel necessities. The convenient bench has a padded seat, flip up lid and a cedar lining. It's perfect for shoe or linen storage and doubles as a great hamper. Rest and relax on the king size iRelax memory foam mattress. Valencia 38RW in Cracked Pepper Décor.

## FLOORPLAN OPTIONS

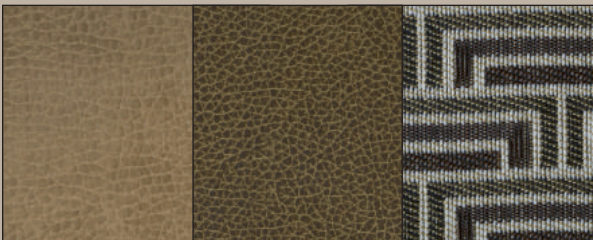


## SPECIFICATIONS

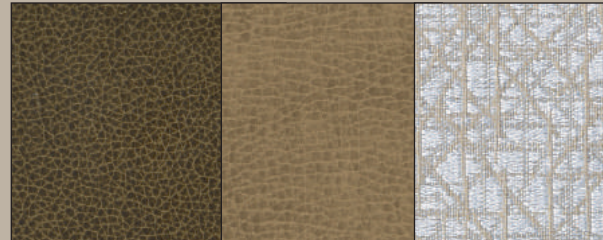
Overall Exterior length	38'2"
Exterior Width	99.25"
Wheelbase	279"
Overall Exterior Height	12'6"
(Includes 15,000 BTU Roof Air Conditioners)	
Interior Height	84"
Fuel Tank Capacity	100 gallons
DEF Tank Capacity	10 gallons
Fresh Water	150 gallons
Grey Water	75 gallons
Black Water	75 gallons
LPG Capacity Gallons/lbs.	20 Gallons 84 lbs.



The standard outside entertainment center features a 32" LED TV with remote, AM/FM/CD/DVD with blue-tooth connectivity and speakers and conveniently located under your patio awning.



BUTTER RUM DECOR



ICED LATTE DECOR



CRACKED PEPPER DECOR

# STANDARD AND OPTIONAL FEATURES

## Construction & Exterior Features

- Smooth High Gloss One Piece Fiberglass Wall Surface
- 2" Vacuum Laminated Sidewalls w/ Welded Tubular Aluminum Framing
- 1.5" High Density Foam Insulation in Sidewalls & Roof
- Welded Tubular Aluminum Roof Truss System with Framed Cutouts
- One Piece Crowned Fiberglass Roof Surface
- "Super Sandwich" Floor Construction Consisting of:
  - (1) 3/4" Fir Plywood Deck over 2 x 4 Wood-framed Residential Floor
  - (2) 2" Welded Steel Floor Joist System
  - (3) Mounted to 3" Steel Longitudinal Floor Beams
- 3" Premium Grade Roxul Sound Deadening and Thermal Insulation in Floor
- Galvanized Steel Vapor Barrier

## Exterior Features

- Full Body Paint Available in 4 Décor
- Powder-coated Steel Storage Compartments with Carpeted Lining
- Aluminum Compartment Doors w/ Single Handle Paddle Latches
- Exterior Entry Door Handle
- RV Entrance Door w/ Screen, Deadbolt, and Keyless Entry Door Touchpad Lock
- Carefree of Colorado Lateral Arm Electric Awning w/ LED Lights
- Aluminum Wrapped Auto Deploy/Retract Awnings Over All Slide Outs
- Frameless Tinted Windows with Tilt-opening Design and Screens
- 12,000 lb. Hitch, 7 Way Tow Connector w/ 2" Ball
- Equalizer Fully Automatic 4 Point Hydraulic Leveling System
- Aerodynamic Fiberglass Front and Rear Caps & Transition
- LED Brake, Turn & High Mount Brake Lights

## Entertainment Systems

- Premium Touch Screen Dash Radio with Portable Tablet
- Garmin RV Specific Navigation
- Sirius/XM Radio Ready (requires customer subscription)
- JBL Custom Tuned Cab Sound System with 4 Speakers
- Color Rear and Side View Cameras
- 40" LED TV on Full Motion Swing Arm in Living Area
- Soundbar Home Theater w/ Bluetooth Streaming and BluRay/DVD Player
- 32" LED TV in Bedroom
- Exterior Entertainment Ctr. w/ 32" LED TV, AM/FM/CD/DVD Player & Speakers
- Rooftop Antenna with Standard and HD Signal Capability
- Pre-wired for In-motion SD and Stationary HD Satellite Systems
- Exterior Park Cable Hookup
- Interior Features and Décor
- Choice of 3 Designer Interior Décor
- Soft Touch Sofa with Queen Size Slide-a-bed Sleeper
- Soft Touch Dinette Seating with Convertible Bed & Solid Surface Table Top
- Pull Out Storage Drawers under Dinette Booth Seats
- Solid Hardwood Cabinets with Hardwood Doors & Hidden Hinges
- Satin Nickel Cabinet Door and Drawer Pulls

## Interior Features

- Soft Close Full Extension Ball Bearing Drawer Guides Throughout
- Slide-out Pantry with Adjustable Shelves - 38RW Only
- Polished Solid Surface Galley Countertops
- Stonecast Deep Bowl Kitchen Sink with Solid Surface Covers
- Wavy Glass Tile Backsplash in Galley
- Congoleum Easy Care 1 Piece Flooring in Living Room, Kitchen, Hallway & Bath
- Manual Day/Night Roller Shades
- Deluxe Padded Headboard
- 72" x 74" King Size iRelax Memory Foam Mattress
- Designer Bedspread w/ Pillows & Shams
- Quick Removable 30" x 77" Bunkbeds with Privacy Curtains (38BB)
- 7' Interior Ceiling Height

## Electrical Systems

- Multiplex Lighting w/ Color Touch Screen Controller
- 8KW Onan Quiet Diesel Generator
- 2,000 Watt Inverter
- 8D AGM House Battery
- Automatic Generator Start System
- Power Retract 50 Amp Power Cord Reel
- 50 amp Electrical Panel
- 12V Holding Tank Heaters, Grey & Black Tanks
- Exterior GFI Receptacle - Doorside Compartment
- Energy Efficient LED Flush Mount Ceiling Lighting Throughout
- USB/110V Charging outlets in Bedroom and Living Room
- Pre-wired for Solar Charging System

## Bath Systems & Amenities

- Deluxe Hardwood Vanity and Medicine Cabinet
- Color Coordinated Fiberglass Shower with Glass Door & Shower Surround
- Shower Skylight
- 12V High Capacity On Demand Water Pump
- Whole House Water Filter System
- Solid Surface Countertop w/ Integrated Solid Surface Sink
- Maxxair Fan in Bathroom, 1 Handheld Remote
- Deluxe Bath Faucet & Adjustable Shower Head
- Porcelain Electric Macerator Toilet
- Black Tank Flush System
- Fresh Water Fill - City Water Hookup
- Outside Faucet with Sprayer

## Chassis and Cab

- Freightliner Custom Chassis S2RV 31,000 lb. GVWR, 46,000 lb. GCWR
- Cummins ISB 6.7L 360HP, 800 lb. ft. Torque
- Allison 3000MH 6 Speed Automatic Transmission w/ Electronic Push Button Shifter
- Cummins VG Engine Braking with Dash Switch

- Aluminum Cab Construction, Designed & Tested for Occupant Protection
- Fiberglass Molded Tank Covers and Entry Steps
- One Piece Panoramic Cab Windshield
- Flip Forward Hood Assembly for Fast & Easy Service Access
- Premium Freightliner Heat/Sound Insulation Package
- Freightliner Heavy Duty Chromed Steel 3 Piece Front Bumper
- Power Windows and Door Locks
- Power/Heated Remote Control Mirrors
- Tilt & Telescoping Steering Wheel with Electronic Cruise Control
- Air Ride Driver and Passenger Seat Pedestals with Swivels
- Soft Touch Driver/Passenger Seats w/ Adjustable Lumbar Supports & Armrests
- Removeable Automotive Style Carpetliner w/ Floor Mats
- Deluxe Cab Carpeting with Matching Floor Mats
- Single 100 Gallon Fuel Tank with Side Mounted Fill
- 10 Gallon DEF Tank
- Air Brakes with 4 Wheel ABS
- Airliner Rear Air Ride Suspension
- Polished Aluminum Wheels with Center Caps
- Bridgestone Ecopia R283A 295/75R22.5" Tires

## Appliances & Utilities

- 19 Cu. Ft. Residential Refrigerator w/ Stainless Steel Doors & Ice maker
- Recessed Stainless Steel Sealed 3 Burner LP Cooktop
- Stainless Steel Convection Microwave Oven
- 34,000 BTU LP Gas Furnace with Electronic Ignition
- 10 Gal. Gas/Electric Water Heater
- (2) 15,000 BTU Low Profile Roof A/C w/ Heat Pumps & Chill Grill
- Ducted Heating and Air Conditioning
- Pre-wired & Plumbed for Optional Washer/Dryer
- Carbon Monoxide, LP & Smoke Detectors, Fire Extinguisher
- Winterization Kit

## Popular Options

- Stackable Washer and Dryer
- Theater Seating IPO Standard Roadside Sofa Bed
- Table with Credenza and Free Standing Dinette Chairs
- Dometic 13 Cu. Ft. LP/110V Refrigerator with Ice maker
- Power Retract Water Hose Reel
- 60" x 74" Queen Bed with iRelax Memory Foam Mattress
- Pair of DVD Monitors (38BB Model only)
- Congoleum One Piece Vinyl Floor IPO of Carpet in Bedroom IPO Carpet
- Winegard In-motion Satellite System
- Winegard Trav'ler Satellite System
- LP Quick Disconnect LP Line for Gas Grill
- 24" LED TV in Cabover Bed Area
- Brake Controller
- Diamond Shield Paint Protection



BRONZE



GARNET



SAPPHIRE



TITANIUM

# PERFORMANCE-DESIGNED RV'S FOR WORK, PLAY OR BOTH.



## ▶ ABOUT REV GROUP

REV Group connects and protects communities with vehicles that have long served the bus, emergency, recreation and specialty markets. Together, REV Group and its 29 vehicle brands provide unmatched service, selection and support to passengers around the clock and around the world.

**Renegade**  
RV

Address: 52216 SR 15, Bristol IN 46507  
Phone: 888.522.1126 • [RenegadeRV.com](http://RenegadeRV.com)

Features and options may vary from depictions without notice

DESIGNED FOR <sup>YOUR</sup> LIFE

YOUR RENEGADE DEALER:

Blank area for listing a Renegade dealer.