

**ESCAPE MINI & ESCAPE** ultra lightweight travel trailers



**ESCAPE**

ultra lightweight travel trailers

**KZ**  
Est. 1972



ESCAPE  
MINI

## LIGHT *on* WEIGHT NOT *on* STYLE!

The affordable **ESCAPE MINI** tows with ease and features an edgy new profile, smooth fiberglass exterior, outdoor shower, and an optional Off-Road Package with extra ground clearance and 15-inch mud tires.

Interior highlights include:

- queen beds
- roomy slideouts
- 78-inch-high interior walls
- full bath
- digital media stereo with dual USB ports
- LED-lit power awning

Convection microwave combines the power of convection cooking with microwave energy

Tinted windows with pleated shades for privacy

Residential linoleum resists temperature extremes

M181KS : Kona décor



◀ **QUEEN BED**

is within reach of outlets and light switches, with storage overhead.

◀ **MAPLE KITCHEN**

features two-burner gas cooktop, convection microwave, seamless countertops, and 4 CU FT refrigerator.

**KITCHEN STORAGE** ▶

All floorplans feature a pantry, and the 4 CU FT refrigerator holds a gallon container, plus door storage and freezer space. (M181KS shown)



▶ **FULL BATH**

includes shower, foot-flush toilet, and vanity with sink, counter space, outlet access, and storage. (M181KS shown)

▶ **SKYLIGHT**

allows for ventilation and natural light (M181KS shown)



With a sizable tabletop and spacious window views, the Escape Mini

**CONVERTIBLE DINETTE** ▶

transforms easily to a restful sleep spot, with outlets conveniently within reach. (M181KS shown)



**STANDARDS**

- Tinted Windows
- R-7 Insulation
- Diamond Plate Rock Guard
- Rear Bumper w/Sewer Hose Storage
- Self-Adjusting Electric Brakes
- Radial Tires
- 20 LB LP Bottle
- 30AMP Detachable Power Cord
- Cable Hookup
- City Water Fill
- Digital TV Antenna
- 12V Converter w/Charger
- Monitor Panel
- Linoleum Throughout
- 2-Burner Cooktop
- Amish-Crafted Rustic Maple Cabinets
- Rail-Style Cabinet Doors w/Modern Handles
- Mesh Storage Pockets
- Overhead Cabinets
- LED Interior Lighting
- Shower & Toilet

- Evergreen Queen Mattress w/Reversible Comforter
- Deep Single Sink (large enough for filling pots, pans & pitchers)
- Easy to Tow (no mirror extenders w/our narrow body design)
- Wheels are Mounted on the Outside of the Exterior Walls

**OPTIONS**

- 13,500 BTU A/C Low Profile IPO Maxx-Air® Power Fan
- 24" LED TV w/Inside/Outside Bracket
- Wireless Backup Camera System – Observation

**OFF-ROAD PACKAGE**

- 15" Mud Tires
- Extra Ground Clearance
- Electronically-Controlled Heated Holding Tank
- Double Entry Step

**KZ ADVANTAGE PACKAGE (MANDATORY OPTION)**

**EXTERIOR**

- Color Infused Titanium Exterior Fiberglass
- NEW Aerodynamic Front & Rear Profiles
- 5/8" Tongue & Groove Plywood
- 26" Entry Door
- Key-Alike Program for Baggage & Entry Doors
- One-Piece Seamless Fiberglass Roof w/ Aluminum Rafters
- Electric Tongue Jack
- Aluminum Rims
- Folding Grab Handle
- Exterior Speakers
- Spare Tire & Carrier
- 4 - Scissor Style Stabilizer Jacks
- Outside Shower
- Black Tank Flush
- Solar Prep
- Backup Camera Prep
- Nitrogen Filled Tires

**INTERIOR**

- 20,000 BTU Furnace
- 6 Gal. Gas/Electric DSI Water Heater
- Pleated Shades
- Reversible Comforter
- 4 CU FT Refrigerator
- Convection Microwave
- Shower Surround w/Fabric Shower Curtain
- Plywood Bed Base
- Seamless Countertops
- (2) 6.5" Interior Speakers
- Digital Media Stereo w/Bluetooth & 12 Volt Dual USB Port

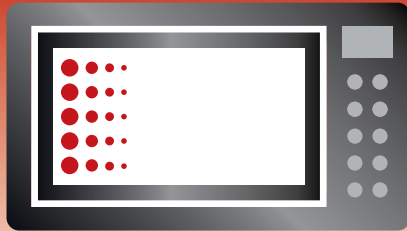
**KZ CONVENIENCE PACKAGE (MANDATORY OPTION)**

**EXTERIOR**

- Power Awning w/LED Light Strip
- Friction-Hinge Entry Door
- Omni-directional HDTV Antenna

**INTERIOR**

- Residential Grade Linoleum
- Rail-Style Cabinet Doors
- Interior Control Switches on OH End Cabinet



**CONVECTION MICROWAVE**

combines the power of convection cooking with microwave energy



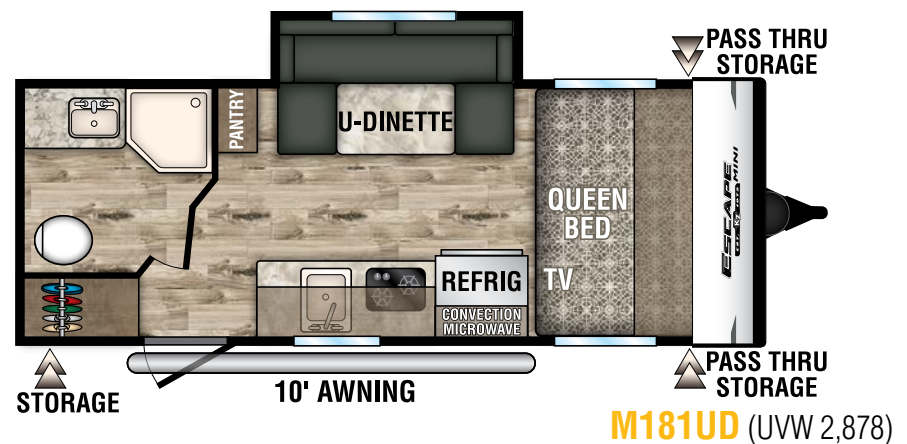
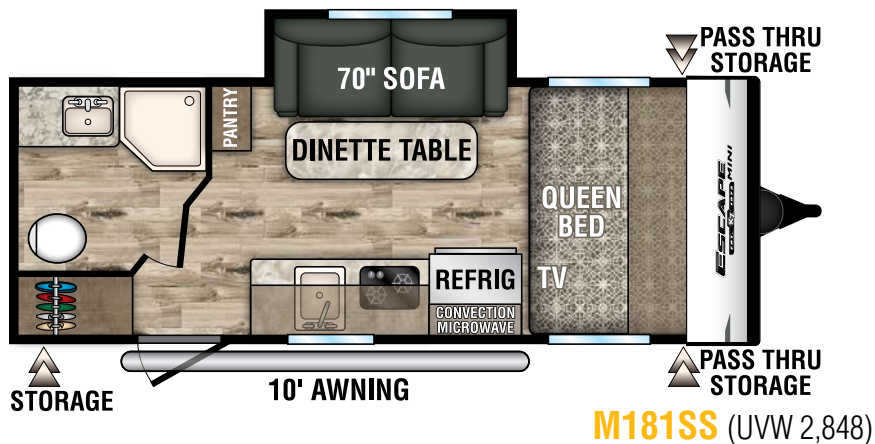
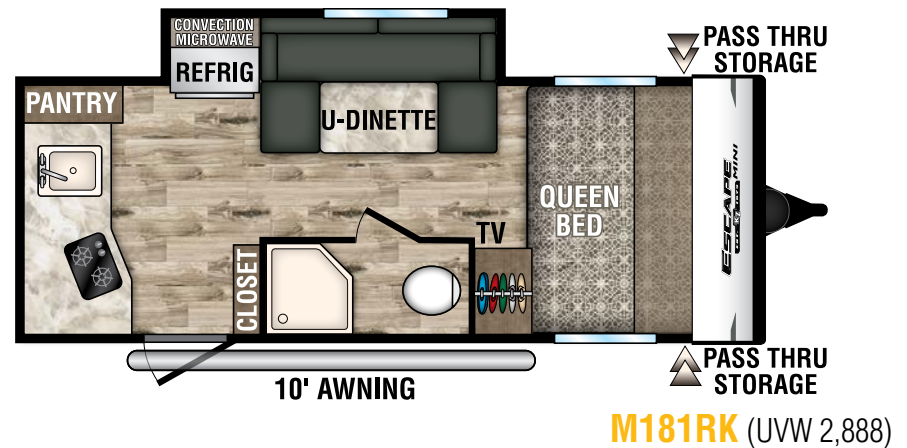
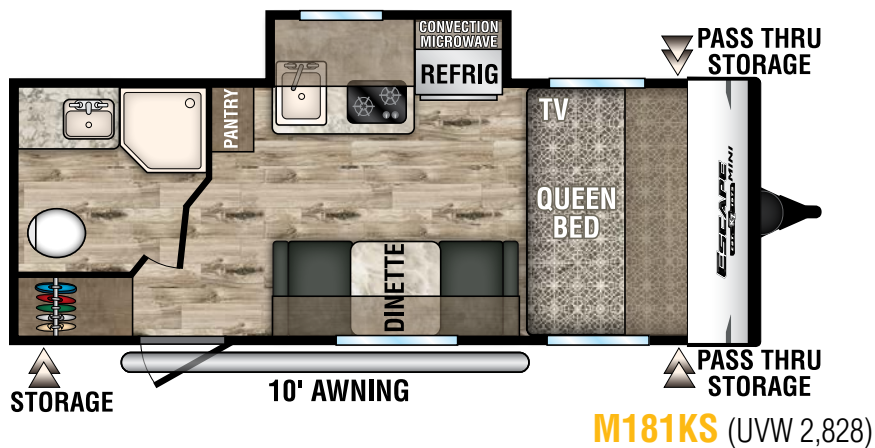
**CONVENIENCE & SECURITY!**

One lock for all applications, and standard industry keys can't open your storage compartments or entry doors.

**OFF-ROAD PACKAGE**

This option offers extra ground clearance, 15-inch mud tires, electronically-controlled heated holding tank and double-entry step (on select models).





Ultra Lightweight Travel Trailers	M181KS	M181RK	M181SS	M181UD
UVW (Unloaded Vehicle Weight)*	2,828	2,888	2,848	2,878
Dry Hitch Weight*	300	310	310	310
Dry Axle Weight*	2,528	2,528	2,538	2,568
NCC (Net Carrying Capacity)	672	612	652	622
GVWR	3,500	3,500	3,500	3,500
Interior Height	82"	82"	82"	82"
Exterior Height	105"	105"	105"	105"
Exterior Width	96"	96"	96"	96"
Exterior Length	20' 9"	20' 9"	20' 9"	20' 9"
Refrigerator (cu. feet)	4	4	4	4
Water Heater Cap. (gal. G/E w/DSI)	6	6	6	6
Fresh Water Cap. (gal.)	30	30	30	30
Waste Water Cap. (gal.)	30	30	30	30
Gray Water Cap. (gal.)	32	32	32	32
LP Gas Cap. (lbs.)	20	20	20	20
Furnace BTUs (1,000s)	20	20	20	20
Tire Size	14"	14"	14"	14"
Awning	10'	10'	10'	10'

\*This weight reflects the rolling average unit weight for each model. Your trailer weight will vary according to optional equipment.



# BUILT FOR Affordable and Economical FUN!

**ESCAPE** is packed with standards like 78-inch-high interior, queen bed, flip-up solid entry steps, LED lights and power awning.

Some floorplans feature:

- Tip-out tents with KZ's exclusive marine-grade Aqualon fabric
- Toy hauler option with cargo ramp and space
- Off-road package with increased ground clearance and mud tires



E191BH : Kona décor



### DINETTE

provides a spot for snacks or dinner, and easily converts to comfortable sleep space. (E191BH shown)



### SMART COMFORTS

- sink big enough to fill pitchers
- rail-style Maple cabinetry
- ample storage
- residential-grade linoleum (E191BH shown)

### ROOM FOR THE KIDS

bunkhouse with full-length closet that accommodates clothes on hangers. (E191BH shown)





E181RB : Kona décor

### ✔ NIGHTSTANDS

can accommodate CPAP equipment, and include handy corner shelves near outlets and USB ports.

### ✔ QUEEN BED

with storage above and beside, panoramic windows with pleated pull-down shades.

### ✔ WINDOW-VIEW KITCHEN

features seamless countertops, double burner gas cooktop, convection microwave. Digital media stereo with Bluetooth and 12-volt dual USB port includes two 6.5-inch speakers. (E181RB shown)



### ✔ FULL BATHROOM

- residential shower
  - recessed medicine cabinet
  - convenient outlet
  - ample storage
  - foot-flush toilet
- (E181RB shown)

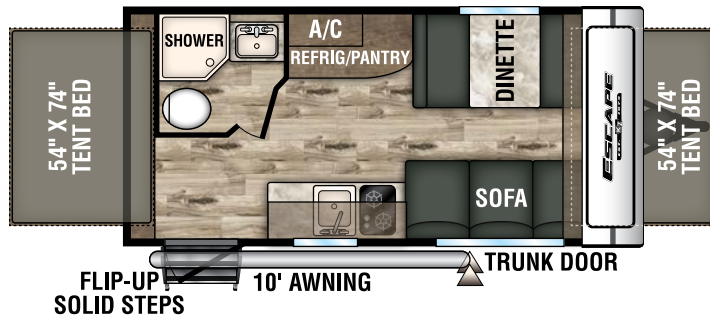


### REFRIGERATOR ▶

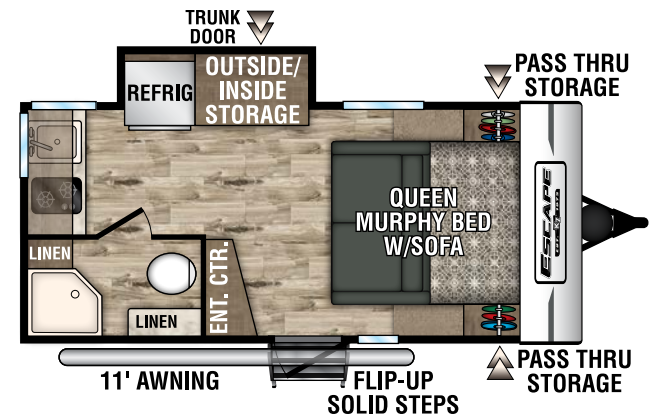
4 CU FT has top freezer and veggie bin (some floorplans include a 7 CU FT double-door refrigerator). (E181RB shown)



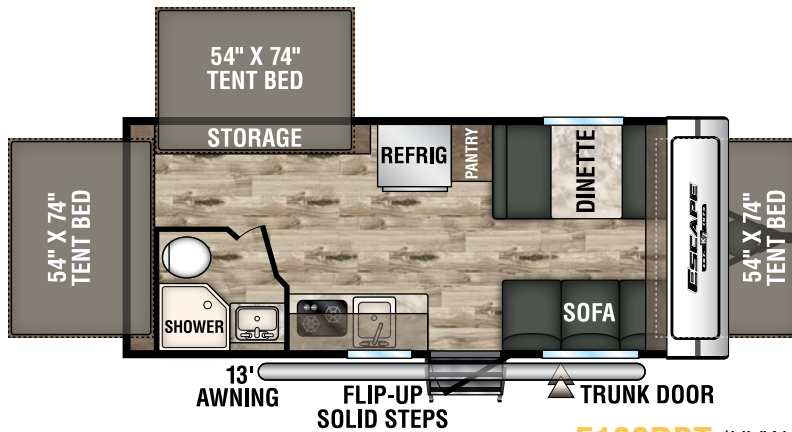




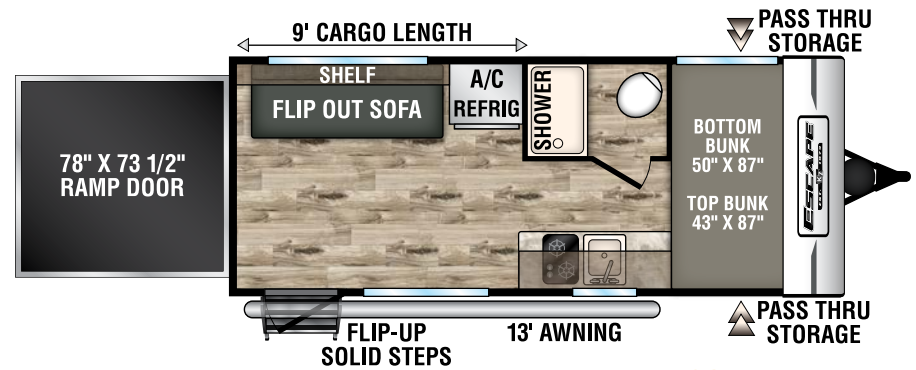
**E160RBT** (UVW 2,690)



**NEW E171MB** (UVW 3,170)



**E180RBT** (UVW 3,220)

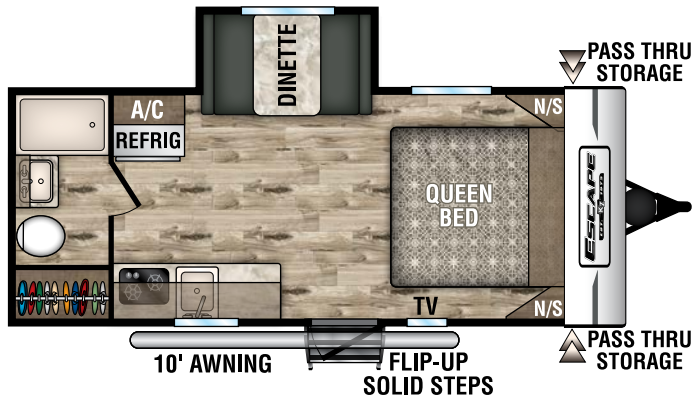


**E180TH** (UVW 3,290)

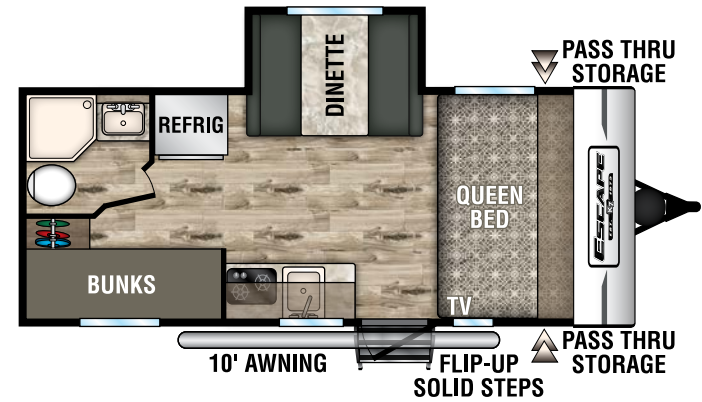
Travel Trailers	E160RBT	E171MB	E180RBT	E180TH	E181RB	E191BH	E191SS	E201BH	E201RB	E231BH
UVW (Unloaded Vehicle Weight)*	2,690	3,170	3,220	3,290	3,099	3,233	3,530	3,480	3,530	3,760
Dry Hitch Weight*	350	430	420	460	445	446	490	460	370	540
Dry Axle Weight*	2,340	2,740	2,800	2,830	2,654	2,787	3,040	3,020	3,160	3,220
NCC (Net Carrying Capacity)	810	830	1,280	1,710	901	767	1,470	520	920	740
GVWR	3,500	4,000	4,500	5,000	4,000	4,000	5,000	4,000	4,400	4,800
Interior Height	78"	78"	78"	78"	78"	78"	78"	78"	78"	78"
Exterior Height w/o A/C (unless noted)**	107"	118"	118"	107"	112"	112"	118"	112"	118"	118"
Exterior Width	90"	90"	90"	90"	90"	90"	90"	90"	90"	90"
Exterior Length	18' 10"	19' 8"	21' 3"	21' 7"	21' 11"	21' 11"	23' 8"	23' 7"	23' 10"	27' 3"
Refrigerator (cu. feet)	4	7	7	4	4	4	7	4	7	7
Water Heater Cap. (gal. LP w/DSI)	6	6	6	6	6	6	6	6	6	6
Fresh Water Cap. (gal.)	20	20	20	38	20	20	38	20	20	20
Waste Water Cap. (gal.)	24	32	24	32	32	32	32	32	32	24
Gray Water Cap. (gal.)	32	32	32	32	32	32	32	32	32	32
LP Gas Cap. (lbs.)	20	20	20	20	20	20	20	20	20	20
Furnace BTUs (1,000s)	20	20	20	20	20	20	20	20	20	20
Tire Size	14"	15"	13"	15"	15"	15"	15"	15"	13"	13"
Awning	10'	11'	13'	13'	10'	10'	14'	13'	15'	14'

\*This weight reflects the rolling average unit weight for each model. Your trailer weight will vary according to optional equipment. \*\*This exterior height is with A/C.

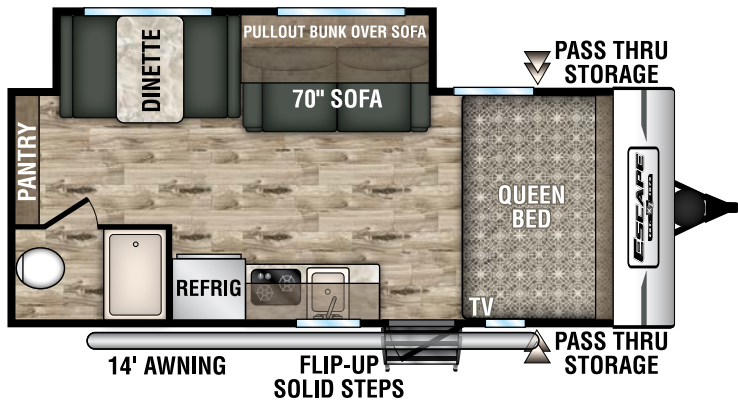




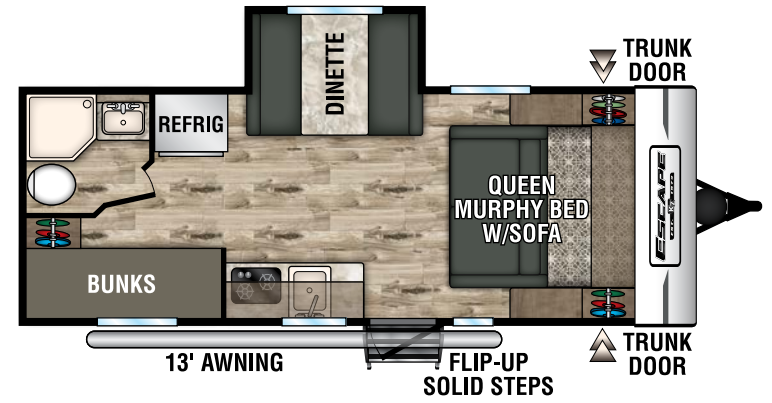
**E181RB** (UVW 3,099)



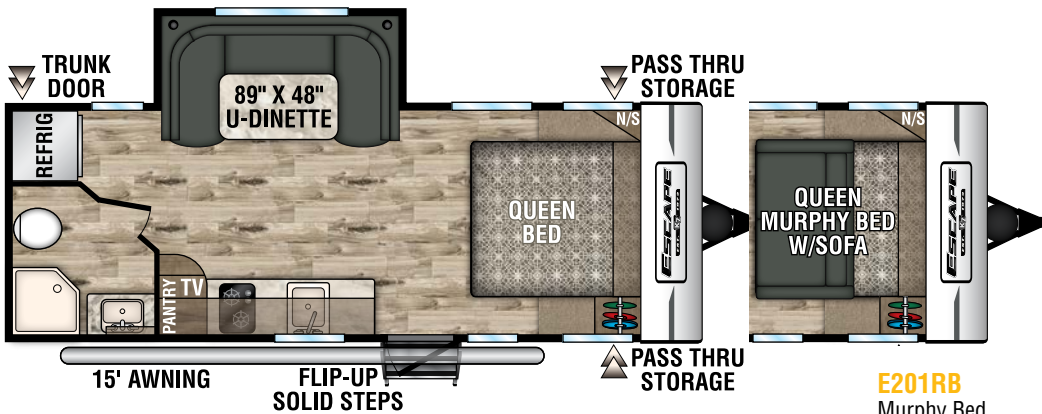
**E191BH** (UVW 3,233)



**E191SS** (UVW 3,530)

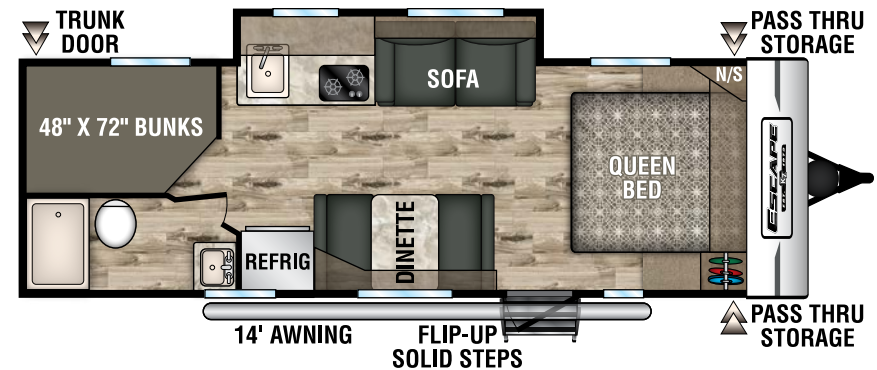


**NEW E201BH** (UVW 3,480)



**E201RB** (UVW 3,530)

**E201RB**  
Murphy Bed  
Option



**E231BH** (UVW 3,760)



**STANDARDS**

- Alum-a-Tough® Roofing w/12-Year Limited Warranty
- Tinted Windows
- R-7 Insulation
- Diamond Plate Rock Guard
- Rear Bumper w/Sewer Hose Storage
- Self-Adjust Electric Brakes
- Radial Tires
- 20# LP Bottle
- Cable Hookup
- City Water Fill
- Digital TV Antenna
- 12V Converter w/Charger
- 6 GAL LP DSI Water Heater
- Monitor Panel
- Linoleum Throughout
- 2-Burner Cooktop
- Microwave
- 4 CU FT LP/Electric Refrigerator (E160RBT, E180TH, E181RB, E191BH)
- 7 CU FT Double-Door Refrigerator (E171MB, E180RBT, E191SS, E201RB, E231BH)
- Amish-Crafted Rustic Maple Cabinets

- Rail-Style Cabinet Doors w/Modern Handles
- Overhead Cabinets
- LED Interior Lighting
- Shower & Toilet

**OPTIONS**

- 13,500 A/C Low Pro (required on E180RBT, E191SS, E201RB, E231BH)
- U-Dinette IPO Standard Dinette (E181RB, E191BH)
- 7 CF Refrigerator (required on E180RBT, E191SS, E201RB, E231BH & must option roof A/C)
- 24" TV w/Inside/Outside Bracket (E180TH, E181RB, E191BH, E191SS, E201BH)
- Aluminum Wheels - 2 (N/A E180RBT, E201RB, E231BH)
- Aluminum Wheels - 4 (E180RBT, E201RB, E231BH)
- Murphy Bed w/Sofa (E201RB)
- Wireless Backup Camera System - Observation
- Front Window (N/A E160RBT, E180RBT, E180TH)
- Bedspread (N/A E160RBT, E180RBT)
- Retractable Screen Wall (toy hauler only)

**OFF-ROAD PACKAGE**

- Aluminum Rims w/15" Mud Tires
- Extra Ground Clearance
- Electronically-Controlled Heated Holding Tank
- Double Entry Step (select models)

**KZ ADVANTAGE PACKAGE (MANDATORY OPTION)**

**EXTERIOR**

- Color Infused Titanium Exterior Fiberglass
- 5/8" T&G Plywood Floor
- 26" Entry w/Flip-Up Entry Step
- 8,000 A/C
- Key-Alike Program for Baggage & Entry Doors
- Aqualon Edge Tent Material
- Folding Grab Handle
- Exterior Speakers
- Spare Tire & Carrier
- 4 - Scissor Style Stabilizer Jacks
- Solar Prep
- Backup Camera Prep
- Nitrogen Filled Tires

**INTERIOR**

- 20,000 BTU Furnace
- Seamless Countertops
- Pleated Shades
- Convection Microwave
- Shower Surround
- Plywood Bed Base
- (2) 6.5" Interior Speakers
- Digital Media Stereo w/Bluetooth & 12 Volt Dual USB Port

**KZ CONVENIENCE PACKAGE (MANDATORY OPTION)**

**EXTERIOR**

- Power Awning w/LED Light Strip
- Friction Hinge Entry Door
- Double Entry Steps (select models)
- Omnidirectional HDTV Antenna

**INTERIOR**

- Residential Grade Linoleum
- Rail Style Cabinet Doors
- Interior Control Switches Overhead End Cabinet



E180TH

**E180TH TOY HAULER** offers flexibility & a new **DIMENSION OF FUN!**

Who says you can't enjoy an economical toy hauler? The **ESCAPE E180TH** offers a **FULL 9-FOOT GARAGE**, which doubles as living/sleeping space. (E180TH shown)





# ESCAPE & ESCAPE

## MINI EXTERIOR FEATURES



### STANDARD FLIP-UP ENTRY STEP

solid footing, coming and going. Handy friction chock and screenshot auto-door-close feature. (Escape only)



### LED LIT POWER AWNING

makes it easy to enjoy relaxing outdoor gatherings



### ALUMINUM RIMS

and nitrogen-filled tires are standard on Escape Mini & Escape



### CABLE

### EXTERIOR CABLE PREP



### EXTERIOR SPEAKERS



### 5/8" TONGUE & GROOVE PLYWOOD



### BACKUP CAMERA PREP



# DOWNLOAD YOUR FREE

**KZ RV APP TODAY!**

Owning and operating an RV has never been easier. Everything you need is now in the palm of your hand.



Track RV Maintenance



Keep RV Service Close



Set Custom Notifications



Reference Checklists for RV Trips



**DOWNLOAD NOW!**



VISIT [KZ-APP.COM](http://KZ-APP.COM) TO LEARN MORE.

## KZ Recreational Vehicles... *A History in Progress*

Sam King and Daryl Zook built a truck camper in 1972, with founding principles of quality, fairness, courtesy and integrity. Nearly 50 years later, our 625 employees build your recreational vehicles, on our 100+ acre campus in Shipshewana, IN.

When you communicate with KZ, you'll always be speaking with someone who takes you seriously and treats you with respect. Thank you for considering KZ, and welcome to our world-wide family of satisfied customers!



Dealer:



985 N 900 W • Shipshewana, IN 46565  
E-mail [kz@kz-rv.com](mailto:kz@kz-rv.com) • [www.kz-rv.com](http://www.kz-rv.com)



*Due to continual research and advances, manufacturer reserves the right to change specifications, design, price and equipment without notice, and assumes no responsibility for any error in this literature. Some items shown are not included as standard or optional equipment. ©2019KZ | 01/16/19 | 60M*