

CONNECT

lightweight travel trailers

KZ
Est. 1972



CONNECT SE & CONNECT

lightweight travel trailers



Getting into the action **JUST GOT EASIER!**

The all-new **CONNECT SE** is available in several diverse floorplans. Slideouts make SE feel spacious and welcoming.

Modeled after Connect but lighter and lower-priced, the **SE** is nicely outfitted, including:

- Handcrafted solid maple cabinetry
- Queen beds
- Fiberglass exterior
- Aerodynamic front profile

C312BHKSE : Kona décor



Extra-wide interior doorways throughout floorplan

The bunkhouse slideout with second dinette gives

KIDS ROOM TO PLAY. ➤

Sleep three comfortably, with third bunk atop the closet cabinet.

(C312BHKSE shown)



➤ **EXTRA-LARGE DINETTE**

accommodates the whole family, with additional storage space under the dinette seats. (C312BHKSE shown)



➤ **UNDER-OVEN DRAWER**

neatly fits bulky kitchen items. (C312BHKSE shown)

KITCHEN ➤

features

- gas cooktop with glass cover and built-in oven
- stainless steel microwave
- double-door 8-CU-FT refrigerator
- spacious pantry



C271RLSE : Kona décor

Handcrafted solid wood glazed maple cabinetry, and residential-style furniture add

CHARM AND COMFORT.

Storage is well placed, as is the convenient 12V outlet with dual USB port.

Residential grade linoleum and...

...carpet resist wear and tear.

BEDROOM features:

- High-thread-count quilted and reversible comforter
- LED lighting
- Pleated nightshades
- His-and-hers full-length closets on both sides of the bed (C271RLSE shown)



SEAMLESS COUNTERTOPS

with a deep under-mount stainless steel kitchen sink and stainless steel high-rise faucet. (C271RLSE shown)



Three-burner gas drop-in cooktop with built-in oven includes a

GLASS COVER THAT ADDS COUNTER SPACE,

plus LED-lit knob accents. (C271RLSE shown)



STANDARDS

- 3/8" Fully Walk-On Roof Decking
- 1-Piece Seamless Roof w/SuperFlex® Roofing Material
- UVA & UVB Resistant Gelcoat Lamilux® Exterior F/G
- Protective Front Diamond Plate
- Extra-Large Baggage Doors w/Magnetic Catches
- KZ Easy-Catch Baggage Door Systems
- LED Exterior Lighting
- Outside Entertainment Prep (EXT 110V & cable outlets)
- Outside Shower
- (4) Stabilizer Jacks
- (2) 20# LP Bottles w/Bottle Cover
- Satellite & Cable Hookups
- 30 AMP Service
- 13,500 BTU A/C
- Water Heater Bypass
- Black Flush Tank
- Digital TV Antenna w/Booster
- 3-Burner Range w/Oven
- High-Rise Faucet
- Rich Woodbridge Maple Cabinetry

- Hand-Crafted Mortise & Tenon Glazed Cabinet Doors
- Roller Ball Bearing Drawer Glides
- Linoleum Throughout
- LED Interior Lighting
- Nightshades
- Shower Surround
- Skylight over Tub
- Roof Vent in Bath
- High Thread Count Quilted Reversible Queen Bedspread

OPTIONS

- 15,000 BTU A/C IPO 13,500 BTU A/C
- 8 CU FT Gas/Electric Refrigerator IPO 10 CU FT 12V Refrigerator
- 50 AMP Service for 2nd A/C

**KZ ADVANTAGE PACKAGE
(MANDATORY OPTION)****EXTERIOR**

- Color Infused Titanium Exterior Fiberglass
- Friction-Hinged Entry Door
- Power Front Jack

- Key Alike Program for Baggage & Entry Doors
- Magnetic Catches for Baggage Doors
- Screenshot on Entry Door
- Exterior Speakers
- Spare Tire & Carrier
- Amber Light Step
- Solar Prep
- Backup Camera Prep
- Nitrogen Filled Tires
- Battery Disconnect Switch
- Climate Package (heated, insulated & enclosed underbelly)
- Polished Chrome Wheels
- Black Tank Flush
- Outside Shower
- Outside Kitchen (select models)

INTERIOR

- Jackknife w/Middle Console
- Drop-In Cooktop w/Glass Cover & Oven
- 12V Dual USB Port in LR
- Seamless Countertops w/Deep Undermount Stainless Steel Kitchen Sink
- Plywood Bed Base w/Gas Struts

- 12V USB in Bunk Area
- (2) 6.5" Interior Speakers
- Multimedia Stereo w/Bluetooth, DVD & NFC Wireless Connectivity
- Foot Flush Toilet
- Cabinet Doors at Booth Dinette
- Pleated Shades
- Wider Pocket/Passage Interior Doors

**KZ CONVENIENCE PACKAGE
(MANDATORY OPTION)****EXTERIOR**

- Power Awning w/LED Light Strip
- Omnidirectional HDTV Antenna
- LED Lights in Exterior Speakers

INTERIOR

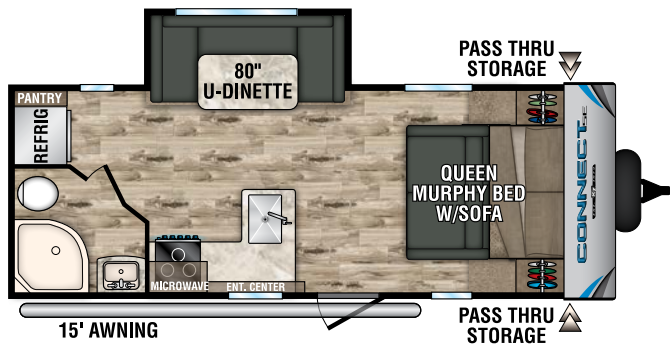
- Residential-Grade Linoleum
- 10 CU FT 12V Refrigerator w/Dual Temperature Control
- Stainless Steel Microwave
- Stainless Steel Residential Kitchen Faucet
- Interior Control Switches on Overhead End Cabinet
- Accent Trim on Corners/Entry Doors

| Ultra Lightweight Travel Trailers | C201RBSE | C231BHKSE | C231RBKSE | C261BHKSE | C271RLSE | C312BHKSE |
|------------------------------------|----------|-----------|-----------|-----------|----------|-----------|
| UVW (Unloaded Vehicle Weight)* | 4,690 | 5,295 | 5,260 | 5,850 | 5,730 | 7,255 |
| Dry Hitch Weight* | 470 | 675 | 505 | 640 | 720 | 650 |
| Dry Axle Weight* | 4,220 | 4,620 | 4,755 | 5,210 | 5,010 | 6,605 |
| NCC (Net Carrying Capacity) | 1,310 | 1,505 | 1,540 | 1,150 | 1,070 | 1,045 |
| GVWR | 6,000 | 6,800 | 6,800 | 7,000 | 6,800 | 8,300 |
| Interior Height | 78" | 78" | 78" | 78" | 78" | 78" |
| Exterior Height w/ A/C | 10' 8" | 10' 8" | 10' 8" | 10' 8" | 10' 8" | 10' 8" |
| Exterior Width | 96" | 96" | 96" | 96" | 96" | 96" |
| Exterior Length | 24' 10" | 27' 8" | 27' | 31' 10" | 30' 8" | 36' 11" |
| Refrigerator (cu. feet) | 10 | 10 | 10 | 10 | 10 | 10 |
| Water Heater Cap. (gal. G/E w/DSI) | 6 | 6 | 6 | 6 | 6 | 6 |
| Fresh Water Cap. (gal.) | 40 | 40 | 40 | 40 | 40 | 40 |
| Waste Water Cap. (gal.) | 32 | 32 | 32 | 32 | 32 | 32 |
| Gray Water Cap. (gal.) | 32 | 32 | 32 | 32 | 32 | 32 |
| LP Gas Cap. (lbs.) | 40 | 40 | 40 | 40 | 40 | 40 |
| Furnace BTUs (1,000s) | 30 | 30 | 30 | 30 | 30 | 30 |
| Tire Size | 14" | 14" | 14" | 14" | 14" | 15" |
| Awning | 15' | 18' | 17' | 20' | 20' | 18' |

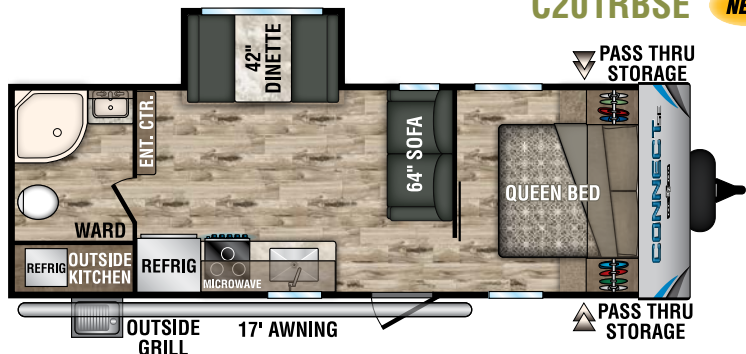
*This weight reflects the rolling average unit weight for each model. Your trailer weight will vary according to optional equipment.

DÉCOR

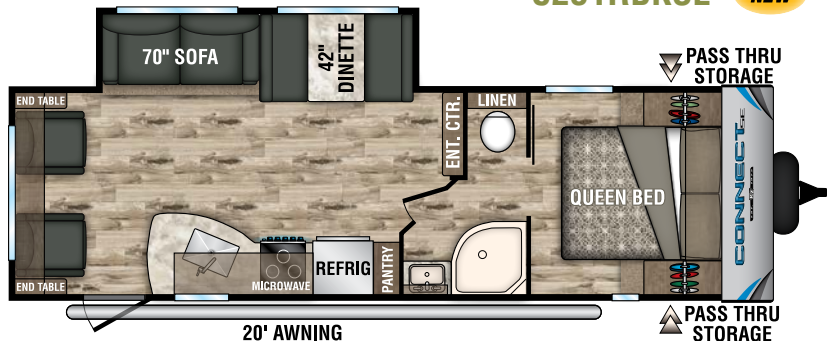




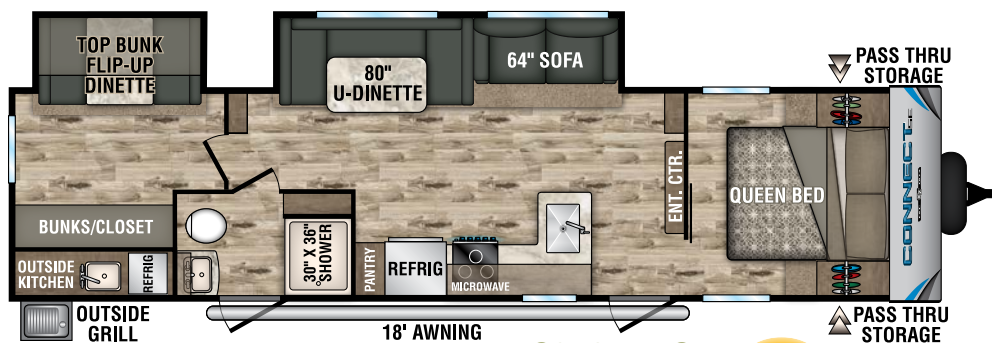
C201RBSE **NEW**



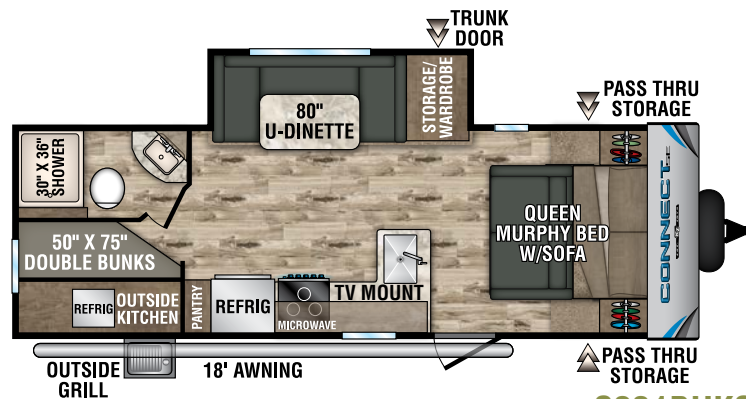
C231RBKSE **NEW**



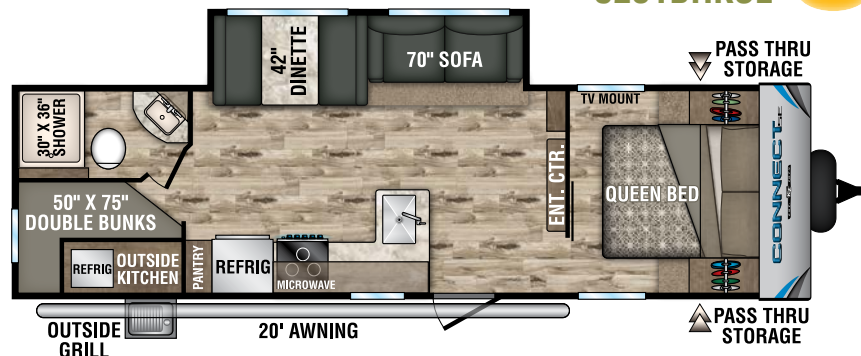
C271RLSE **NEW**



C312BHKSE **NEW**



C231BHKSE **NEW**



C261BHKSE **NEW**

SENSIBLE LAYOUTS

The generous pantry is situated next to the refrigerator. While the oversized bunkhouse features double windows and under-bunk storage. (C261BHKSE shown)



Stylish, adventurous and **BEAUTIFUL INSIDE & OUT!**

Affordable yet well-appointed, **CONNECT** offers creative floorplans. You'll love the gorgeous décor, entertainment features and high-end fiberglass exterior.

CONNECT is packed with standard features typically available only as options:

- Wide doorways
- Residential kitchen with pantry
- Flush-floor slideouts
- Storage galore



C291RL : Kona décor

Bright LED lighting adds to the appeal

RESIDENTIAL- GRADE FURNITURE

performs double duty – the solid hardwood table includes a built-in hinged storage leaf, and the front-hinged dinette seats lift up for more storage. (C291RL shown)



COMFORTS AND AESTHETICS OF HOME

Kitchens feature solid wood glazed maple cabinetry with modern bar handles and frosted glass accents.

The 8-cubic-foot gas/electric
DOUBLE-DOOR REFRIGERATOR
 with veggie bin. Deep under-mount
STAINLESS STEEL KITCHEN SINK
 with stainless steel high-rise pull-down
 sprayer faucet. (C291RL shown)



Wood-grain linoleum
resists cold-cracking

Island and L-shaped
**KITCHEN
FLOORPLANS**
create spaciousness,
with fresh LED lighting
throughout. The seamless
countertops are durable,
beautiful and easy to clean.

WARMTH & CHARM
with the optional
30-inch fireplace.
LED TV and multimedia
stereo with Bluetooth DVD
and NFC wireless connectivity.



60 X 80-INCH QUEEN BED

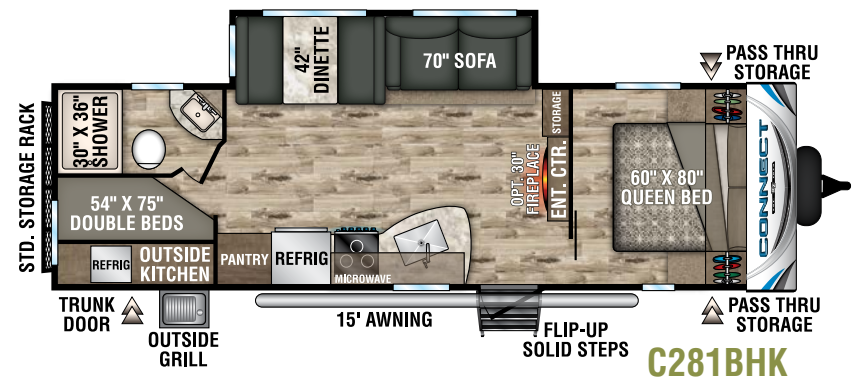
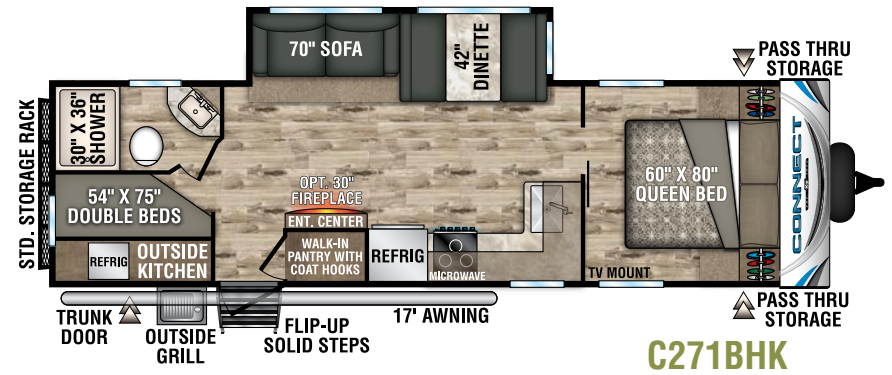
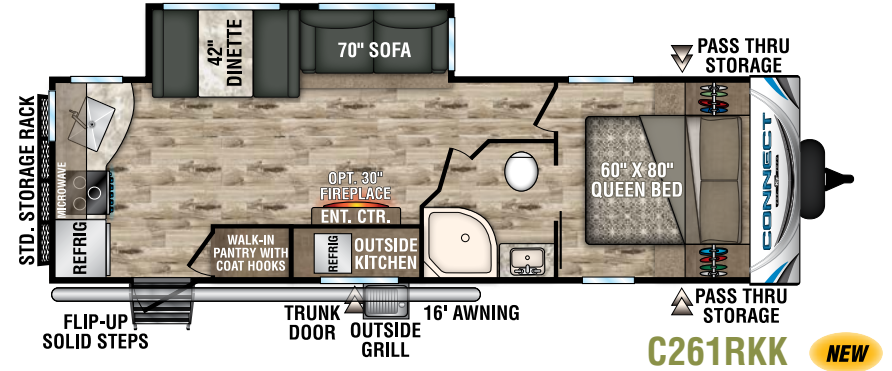
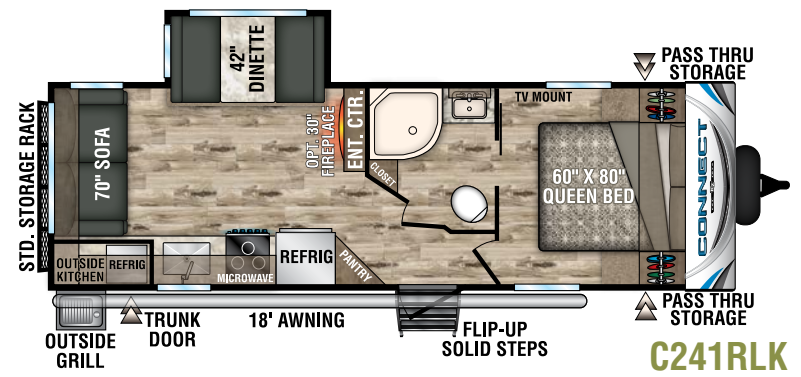
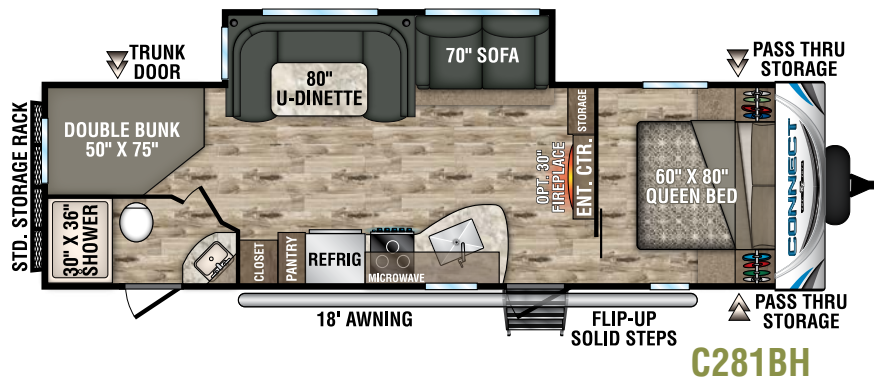
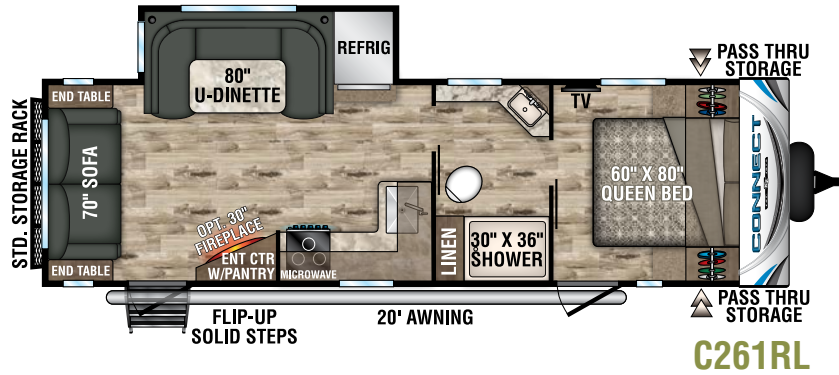
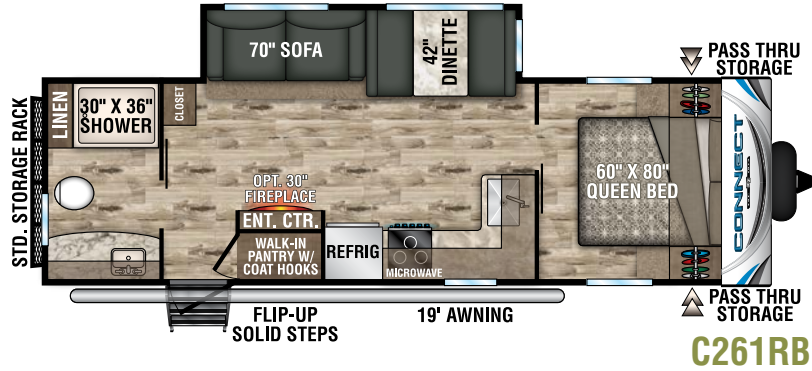
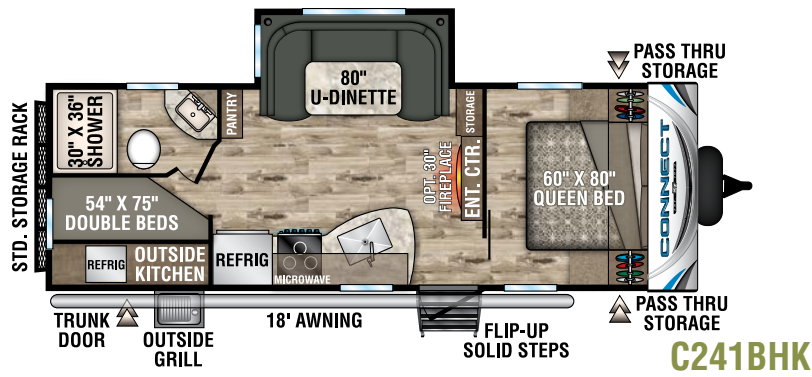
with overhead cabinets and under-bed storage,
nightstands, and built-in padded headboard.

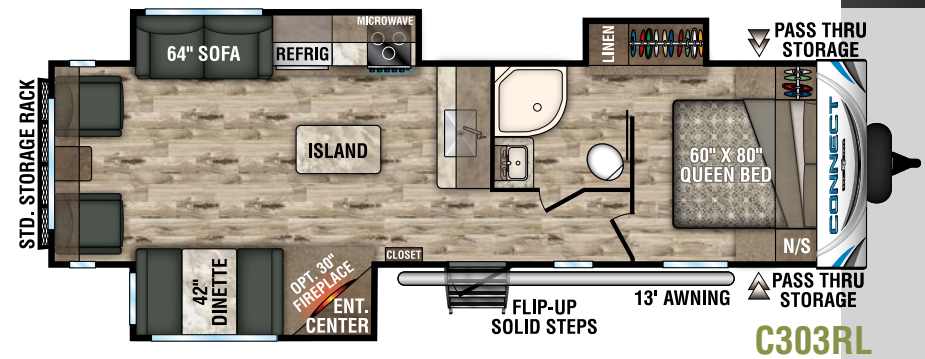
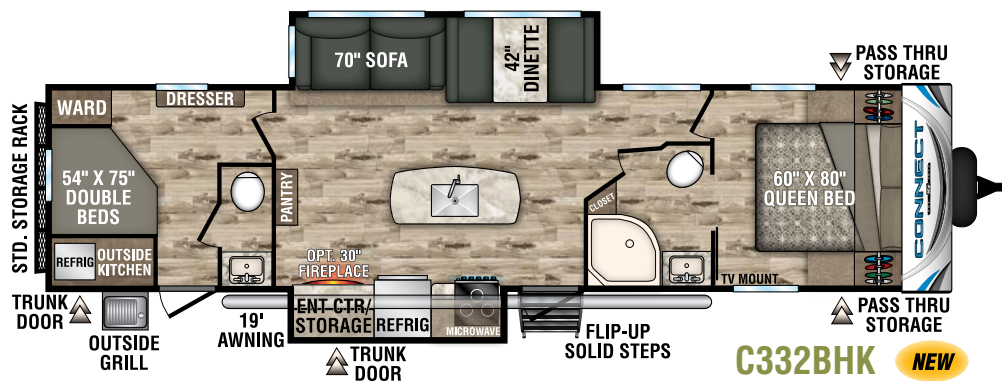
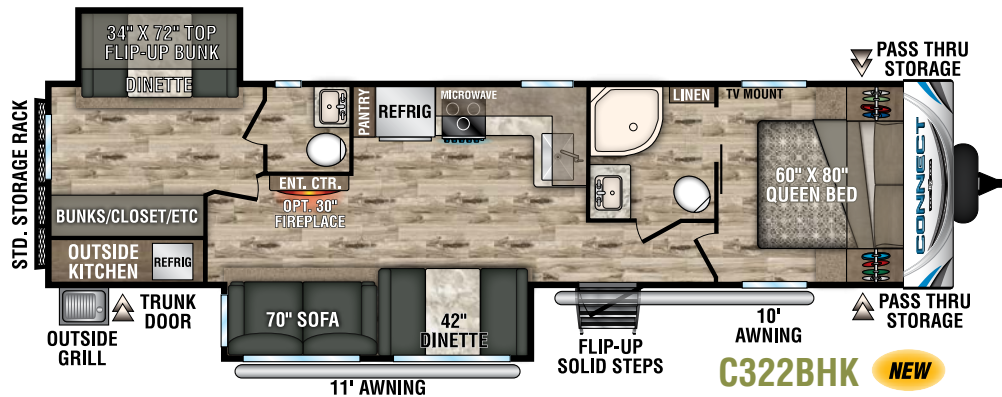
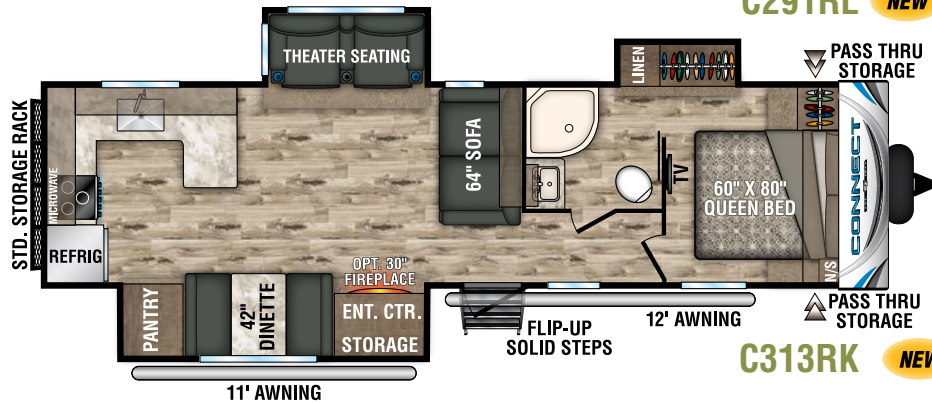
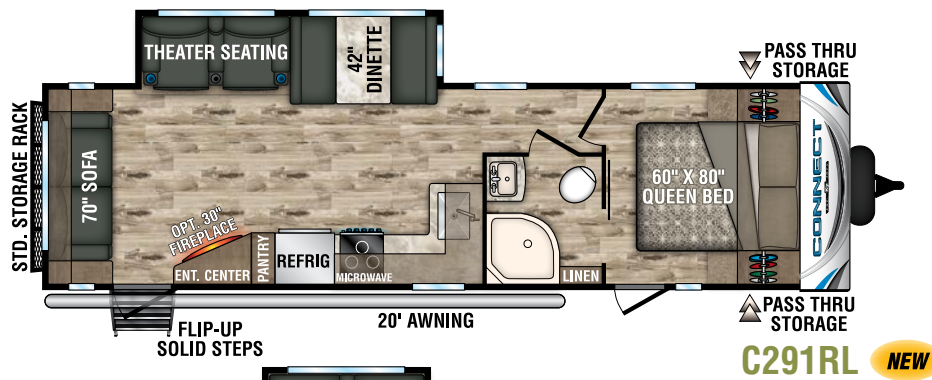
GENEROUS FULL-LENGTH CLOSET
offers hanger and shelf space. (C303RL shown)



FULL BATH
features a roomy
shower with
skylight, medicine
cabinet, and vanity
with counter
space. Most
floorplans include
a linen closet.
(C303RL shown)







71-INCH FLIP-DOWN REAR STORAGE RACK

holds additional luggage/tubs, or two adult-sized bicycles, and folds up completely when not in use. Includes spare tire and mount.



STANDARDS

- 3/8" Fully Walk-On Roof Decking
- 1-Piece Seamless Roof w/ SuperFlex® Roofing Material
- UVA & UVB Resistant Gelcoat Lamilux® Exterior Fiberglass
- Protective Front Diamond Plate
- Extra-Large Baggage Doors w/ Magnetic Catches
- KZ Easy-Catch Baggage Door Systems
- LED Exterior Lighting
- Outside Entertainment Prep (EXT 110V & cable outlets)
- Outside Shower
- (4) Stabilizer Jacks
- (2) 20# LP Bottles w/Bottle Cover
- Satellite & Cable Hookups
- 30 AMP Service
- 13,500 BTU A/C
- Water Heater Bypass
- Black Flush Tank
- Digital TV Antenna w/Booster
- 3-Burner Range w/Oven
- High-Rise Faucet
- Rich Woodbridge Maple Cabinetry
- Hand-Crafted Mortise & Tenon Glazed Cabinet Doors
- Roller Ball Bearing Drawer Glides

- Linoleum Throughout
- LED Interior Lighting
- Nightshades
- Shower Surround
- Skylight over Tub
- Roof Vent in Bath
- High Thread Count Quilted Reversible Queen Bedspread
- Gas Struts on Bed Base

OPTIONS

- Roof Ladder
- Pillowtop Mattress
- Tri-Fold Hide-a-Bed Sofa (N/A C241BHK)
- 50 AMP Service for 2nd A/C
- 15,000 A/C IPO 13,500 BTU
- 2nd A/C – 13.5K
- F/S Dinette Table & 4 Chairs IPO Dinette (N/A C241BHK)
- Theater Seating w/Heat & Massage Features IPO Jackknife (N/A C241BHK, C303RL)
- Bumper Mount Grill
- MaxAir Vent Fan (bathroom only)
- Bedroom LED TV w/Inside/Outside TV Bracket
- Front & Rear Electric Stabilizer Jacks

- Trundle Bed IPO Dinette in Bunk Slide (C322BHK)
- 10 CU FT 12V Refrigerator IPO 8 CU FT Stainless Steel Gas/Electric Refrigerator
- Wireless Backup Camera System – Observation
- Radiant Technology Package (foil in floor, roof, front & rear)
- 30" Fireplace

PLATINUM PACKAGE

- Fiberglass Front Cap
- Pillowtop Mattress
- Headboard

KZ ADVANTAGE PACKAGE (MANDATORY OPTION)**EXTERIOR**

- Color Infused Titanium Exterior Fiberglass
- Flip-Up Entry Step (main entry)
- Friction Hinged Entry Door
- Power Front Jack
- Key-Alike Program for Baggage & Entry Doors
- Magnetic Catches for Baggage Doors
- Screenshot on Entry Door
- Large Folding Grab Handle

- Exterior Speakers
- Spare Tire
- ToyLok®
- Solar Prep
- Backup Camera Prep
- Flip Down 71" Storage Rack
- Equa-Flex® Suspension
- Nitrogen Filled Tires
- Battery Disconnect Switch
- Climate Package (heated, insulated & enclosed underbelly)

INTERIOR

- Jackknife w/Middle Console & Bolster Arms
- Drop-In Cooktop w/Glass Cover & Oven
- Bed Storage System
- 12V Dual USB Port in LR
- Seamless Countertops w/Deep Undermount Stainless Steel Kitchen Sink
- Sink Covers
- Plywood Bed Base w/Gas Struts
- 12V Dual USB in Bunk Area
- (2) 6.5" Interior Speakers
- LED TV
- Multimedia Stereo w/Bluetooth, DVD & NFC Wireless Connectivity

- (2) LED Motion Sensor Lights
- 60"x 80" Queen Mattress
- 36" Storage Bins at Dinette
- Kitchen Skylight
- Bright White LED Light Strip above Slideout Room (main LR only)
- Flush Floor Slideouts
- Wider Pocket/Passage Interior Doors

KZ CONVENIENCE PACKAGE (MANDATORY OPTION)**EXTERIOR**

- Aluminum Wheels
- Power Awning w/LED Light Strip
- Omnidirectional HDTV Antenna
- LED Lights in Exterior Speakers

INTERIOR

- Residential Grade Linoleum
- 8 CU FT Gas/Electric Refrigerator w/ Temperature Controls
- Stainless Steel Microwave
- Stainless Steel Residential Kitchen Faucet w/Pulldown Sprayer
- Interior Control Switches on Overhead End Cabinet
- Accent Trim on Corners/Entry Doors
- Porcelain Toilet w/Foot Flush

| Lightweight Travel Trailers | C241BHK | C241RLK | C261RB | C261RKK | C261RL | C271BHK | C281BH | C281BHK | C291RL | C303RL | C313RK | C322BHK | C332BHK |
|------------------------------------|---------|---------|--------|---------|--------|---------|---------|---------|---------|--------|---------|---------|---------|
| UVW (Unloaded Vehicle Weight) * | 5,120 | 5,670 | 6,050 | 6,080 | 6,050 | 6,240 | 6,170 | 6,100 | 6,595 | 7,290 | TBD | 7,700 | 7,852 |
| Dry Hitch Weight* | 690 | 620 | 720 | 590 | 700 | 780 | 730 | 760 | 705 | 780 | TBD | 790 | 1,050 |
| Dry Axle Weight* | 4,430 | 5,050 | 5,330 | 5,470 | 5,350 | 5,460 | 5,440 | 5,340 | 5,890 | 6,510 | TBD | 6,910 | TBD |
| NCC (Net Carrying Capacity) | 1,680 | 1,130 | 950 | 920 | 950 | 960 | 1,830 | 1,100 | 1,705 | 1,010 | TBD | 1,100 | 948 |
| GVWR | 6,800 | 6,800 | 7,000 | 7,000 | 7,000 | 7,200 | 8,000 | 7,200 | 8,300 | 8,300 | TBD | 8,800 | 8,800 |
| Interior Height | 78" | 78" | 78" | 78" | 78" | 78" | 78" | 78" | 78" | 78" | 78" | 78" | 78" |
| Exterior Height w/ A/C | 10' 7" | 10' 8" | 10' 8" | 10' 8" | 10' 8" | 10' 8" | 10' 8" | 10' 9" | 10' 8" | 10' 8" | 10' 8" | 10' 8" | 10' 8" |
| Exterior Width | 96" | 96" | 96" | 96" | 96" | 96" | 96" | 96" | 96" | 96" | 96" | 96" | 96" |
| Exterior Length | 29' 1" | 29' 8" | 30' 9" | 31' | 31' 2" | 32' 10" | 33' 11" | 32' 7" | 33' 11" | 35' | 35' 11" | 37' 9" | 37' 9" |
| Refrigerator (cu. feet) | 8 | 8 | 8 | 8 | 8 | 8 | 8 | 8 | 8 | 8 | 8 | 8 | 8 |
| Water Heater Cap. (gal. G/E w/DSI) | 6 | 6 | 6 | 6 | 6 | 6 | 6 | 6 | 6 | 6 | 6 | 6 | 6 |
| Fresh Water Cap. (gal.) | 40 | 40 | 40 | 40 | 40 | 40 | 40 | 40 | 40 | 40 | 40 | 40 | 40 |
| Waste Water Cap. (gal.) | 32 | 32 | 32 | 32 | 32 | 32 | 32 | 32 | 32 | 32 | 32 | 64 | 64 |
| Gray Water Cap. (gal.) | 32 | 32 | 64 | 64 | 32 | 64 | 32 | 32 | 32 | 32 | 64 | 64 | 64 |
| LP Gas Cap. (lbs.) | 40 | 40 | 40 | 40 | 40 | 40 | 40 | 40 | 40 | 40 | 40 | 40 | 40 |
| Furnace BTUs (1,000s) | 30 | 30 | 30 | 30 | 30 | 30 | 30 | 30 | 30 | 30 | 30 | 30 | 30 |
| Tire Size | 14" | 14" | 14" | 14" | 14" | 14" | 15" | 14" | 15" | 15" | 15" | 15" | 15" |
| Awning | 18' | 18' | 19' | 16' | 20' | 17' | 18' | 15' | 20' | 13' | 11'/12' | 10'/11' | 19' |

*This weight reflects the rolling average unit weight for each model. Your trailer weight will vary according to optional equipment.

DÉCOR



CONNECT^{SE} & CONNECT

EXTERIOR FEATURES



FLIP-UP ENTRY STEP provides solid footing, and folds neatly away. The friction-hinged entry door with grab-bar and screen-shot feature eliminates slamming and makes for safe, easy passage. *(Connect only)*



5/8" TONGUE & GROOVE PLYWOOD



ALUMINUM WHEELS
and nitrogen-filled radial tires are standard.
(Connect only)



POWER AWNING WITH LED
light strip provides relaxing
nighttime ambience.



LIGHTED TONGUE JACK
assists setup and teardown.



TOYLOK
secures valuables with
external cable and padlock
system. *(Connect only)*



OUTDOOR KITCHEN
(floorplan specific) features cooktop,
refrigerator, and storage shelf.



LED MOTION SENSOR LIGHTS at
entry door, pantry and storage
pass-through. *(Connect only)*



12V DUAL USB PORTS in
living room and bunk area.



BACKUP CAMERA PREP



CABLE & SATELLITE
prewired hookups



PLATINUM PACKAGE

includes fiberglass front cap, pillowtop mattress, and stylish padded headboard.
(Connect only)



CLIMATE PACKAGE

Added insulation so you can extend the camping season, with a fully enclosed, insulated and heated underbelly to protect tanks and pipes (R-9 sidewalls, R-20 roof, and R-24 floor).

DOWNLOAD YOUR FREE

KZ RV APP TODAY!

Owning and operating an RV has never been easier. Everything you need is now in the palm of your hand.



Track RV Maintenance



Keep RV Service Close



Set Custom Notifications



Reference Checklists for RV Trips



**DOWNLOAD
NOW!**



VISIT KZ-APP.COM TO LEARN MORE.



True 2-Year Limited Warranty!

KZ's 24-month hitch-to-bumper limited warranty umbrella is the best two-year warranty in the business, covering more than 1,500 operation codes for a full two years and approved for full-time living, thus protecting your investment while you enjoy your RV.

You've found the RV that fits your needs... now you want total confidence in your selection. Because KZ has total confidence in the products we build, we can pass that along to the original purchaser, starting from the date of delivery. Rest easy... you've partnered with the right manufacturer!

KZ Recreational Vehicles... *A History in Progress*

Sam King and Daryl Zook built a truck camper in 1972, with founding principles of quality, fairness, courtesy and integrity. Nearly 50 years later, our 625 employees build your recreational vehicles, on our 100+ acre campus in Shipshewana, IN.

When you communicate with KZ, you'll always be speaking with someone who takes you seriously and treats you with respect. Thank you for considering KZ, and welcome to our world-wide family of satisfied customers!



Dealer:



985 N 900 W • Shipshewana, IN 46565
E-mail kz@kz-rv.com • www.kz-rv.com

RVIA

Due to continual research and advances, manufacturer reserves the right to change specifications, design, price and equipment without notice, and assumes no responsibility for any error in this literature. Some items shown are not included as standard or optional equipment. ©2019KZ | 01/08/19 | 60M