

BEACON

2 0 1 9

G O Y O U R O W N W A Y



VANLEIGH

BEACON



"We're a family company that is always trying to find out the needs of our customers. It's that simple."

- Bob, Van & Leigh Tiffin



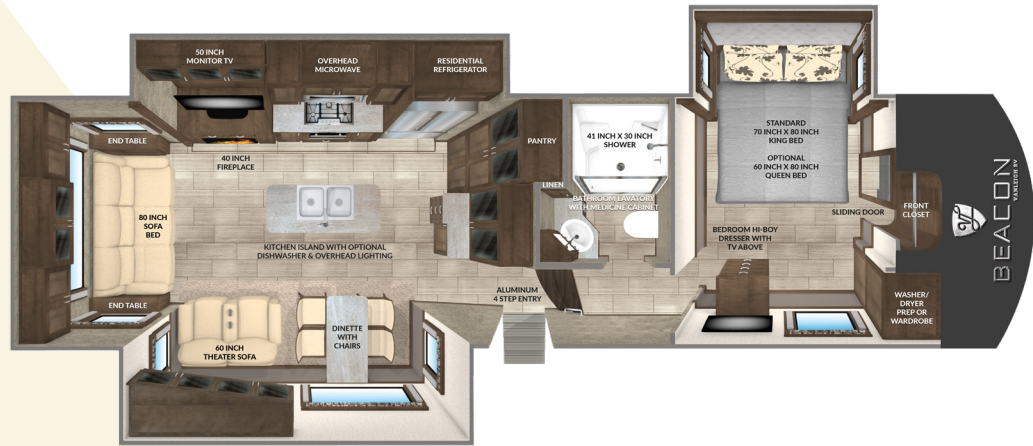
VANLEIGH

BUILT AROUND YOU

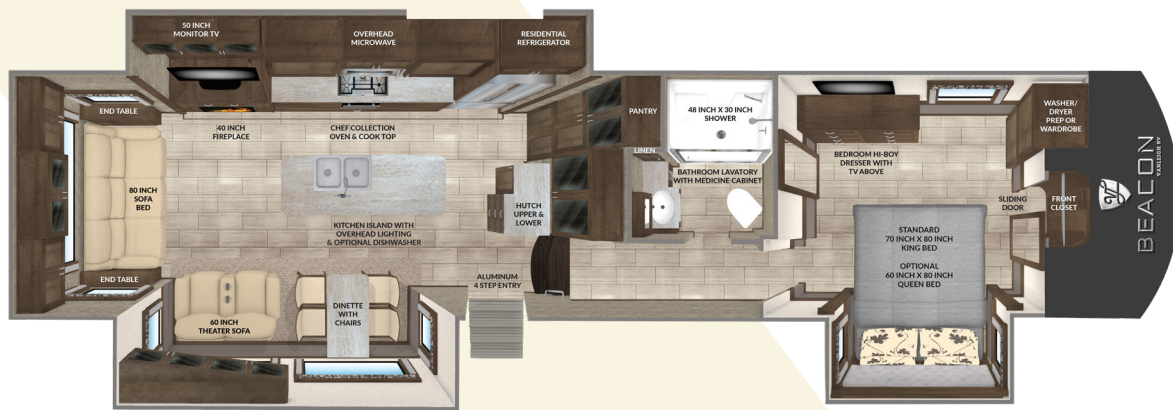
We understand that you have many options to consider when purchasing a new RV and we thank you for taking the time to consider ours. Our family has been in the RV manufacturing industry for over 40 years. The Vanleigh team gets to work well before dawn every morning with one goal in mind, to create the best built product in the marketplace. We believe in building a product that we would want to RV in, whether it's for a weekend getaway or a yearlong hiatus. That's why every Vanleigh RV is made knowing that our customer's journey is their home.



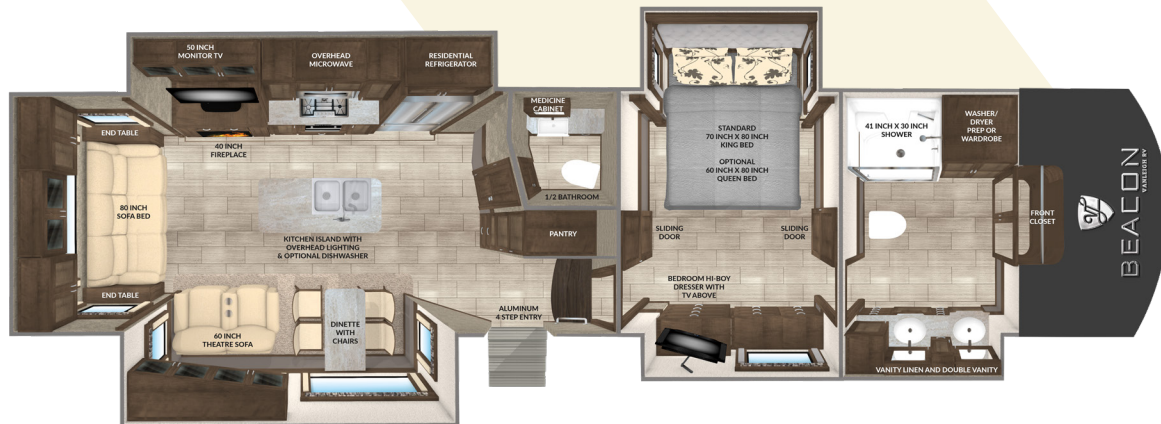
34RLB BEACON REAR LIVING



39RLB BEACON REAR LIVING



39FBB BEACON FRONT BATH & HALF



STANDARD
SOLID WOOD
Cabinetry

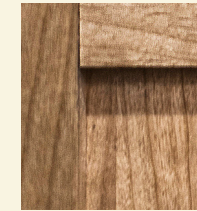
FOR MORE INFORMATION GO TO: vanleighrv.com



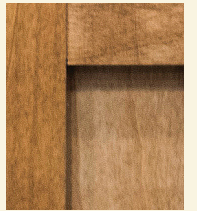
All of our wood cabinetry is made of solid wood and is manufactured on-site in the Vanleigh Cabinet Shop.



Mocha



Amber Glaze

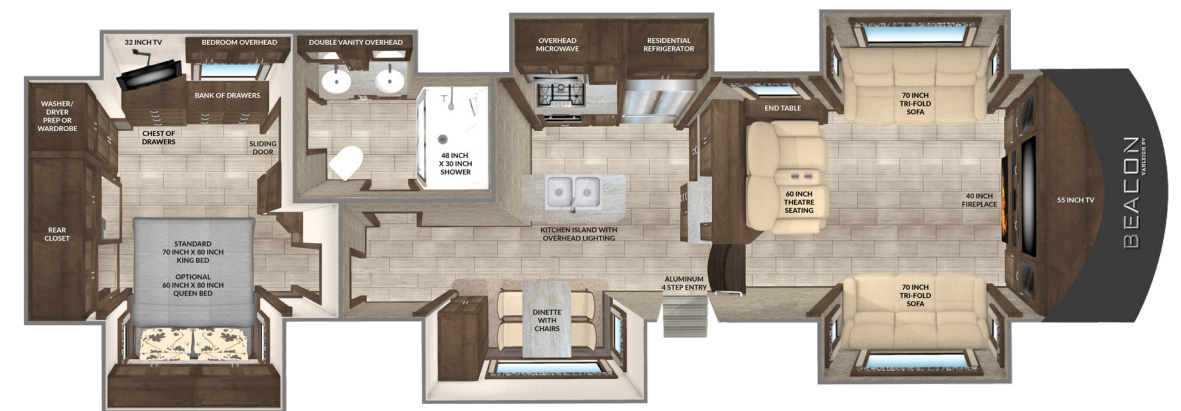


English Chestnut

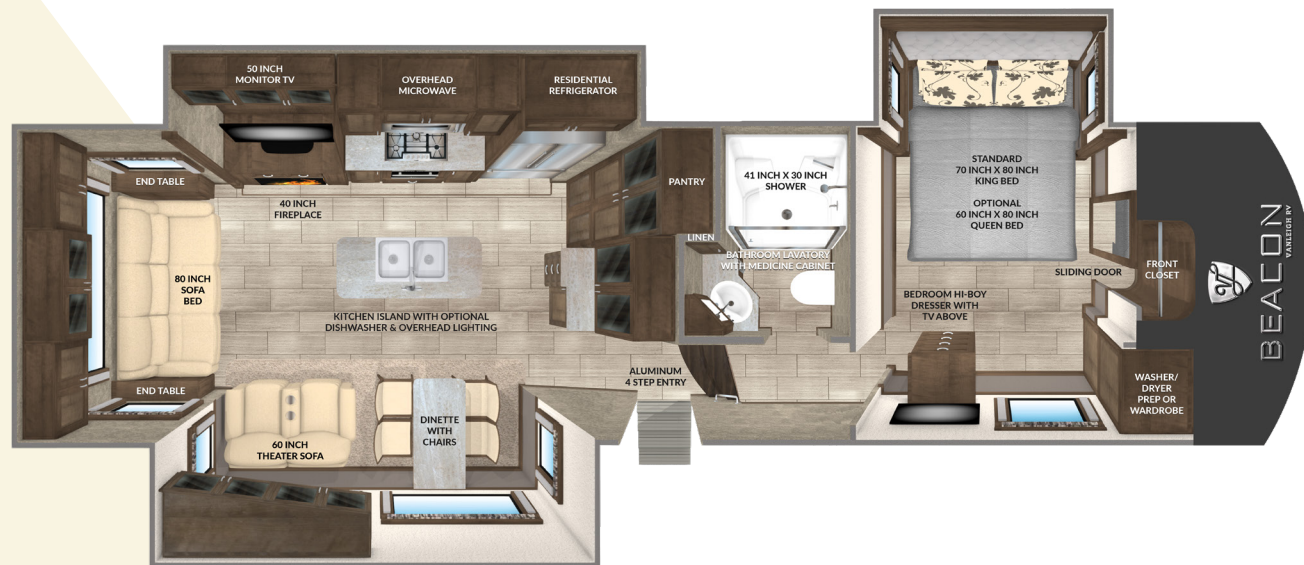
39GBB BEACON GRAND BAR



40FLB BEACON FRONT LIVING



34RLB BEACON REAR LIVING



34RLB view of the spacious rear living kitchen area with 20 cu. ft. stainless French Door refrigerator

SPECIFICATIONS

GVWR 18,000
 Dry Weight 13,000*
 Cargo Carrying 5,000
 Width 101"
 Height 12' 11" **
 Length 34' 11" ***
 Fresh Water Cap. 70 gal

Grey Water Cap. 90 gal
 Black Water Cap. 45 gal
 Water Heater 10 gal
 Furnace 42K BTU
 LP Cap. 60 lbs
 Hitch Weight 2,600****

* unloaded and based off of an average
 ** to top of A/Cs
 *** from pinbox to rear ladder based on standard build, no options
 **** unloaded and based off of an average



Eating area with Amber-Glaze High Gloss Finish Cabinetry and theater seating



Master Suite w/ Standard King Bed

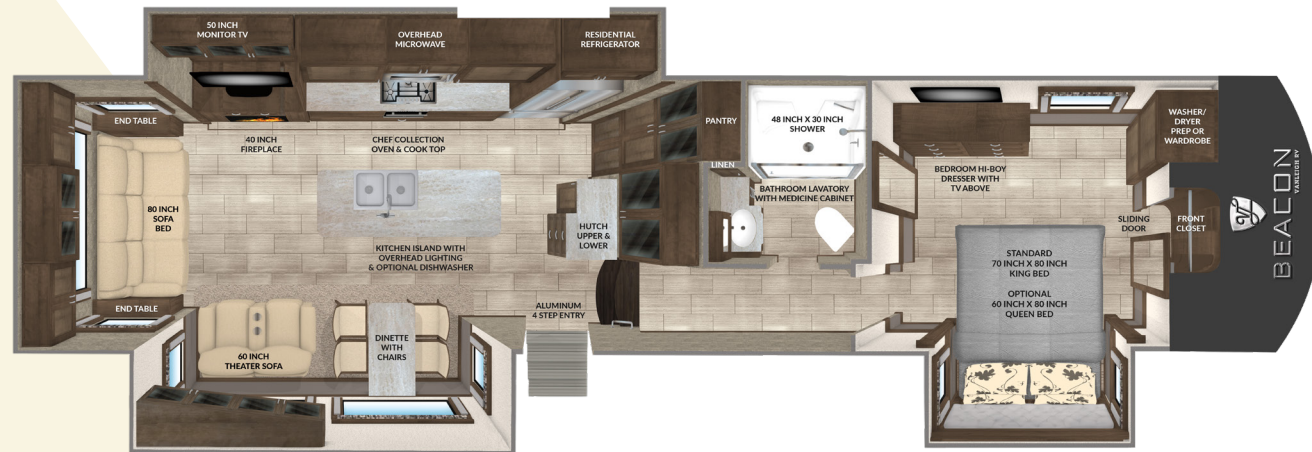


Full Bath with Vanity

From the triple slide outs to the high gloss, solid wood cabinetry, there are plenty of comforts throughout the 34 Rear Living Beacon.

Inside, you'll enjoy solid surface kitchen countertops, residential features like a kitchen faucet with pull-down sprayer, a three-burner range and a 20 cu. ft. stainless French Door refrigerator.

39RLB BEACON REAR LIVING



39RLB with Mocha Wood High Gloss Finish Cabinetry | 72" Window View above the Residential Chef Range | Maximum Counter Space

SPECIFICATIONS

GVWR 18,000	Grey Water Cap. 90 gal	* unloaded and based off of an average
Dry Weight 14,400*	Black Water Cap. 45 gal	** to top of A/Cs
Cargo Carrying 3,600	Water Heater 10 gal	*** from pinbox to rear ladder based on standard build, no options
Width 101"	Furnace 42K BTU	**** unloaded and based off of an average
Height 12' 11" **	LP Cap. 60 lbs	
Length 39' 11" ***	Hitch Weight 2,800****	
Fresh Water Cap. 70 gal		



Kitchen and Living Area



Door-Side Bed in the Master Suite provides additional space



Master Vanity and Shower

The all new 39 Rear Living Beacon has the most counter space of any Beacon, along with a spectacular 72" view above the Residential Chef Range.

We've also moved the bed to door-side in the bedroom, to create even more space to relax and move around. This changes everything!

39FBB BEACON FRONT BATH & HALF



SPECIFICATIONS

GVWR 18,000
 Dry Weight 14,700*
 Cargo Carrying 3,300
 Width 101"
 Height 12' 11" **
 Length 38' 11" ***
 Fresh Water Cap. 70 gal

Grey Water Cap. 90 gal
 Black Water Cap. 45 gal
 Water Heater 10 gal
 Furnace 42K BTU
 LP Cap. 60 lbs
 Hitch Weight 3,100****

* unloaded and based off of an average
 ** to top of A/Cs
 *** from pinbox to rear ladder based on standard build, no options
 **** unloaded and based off of an average



39FBB with Amber Glaze High Gloss Wood Cabinetry | Window View above the Residential Chef Range



Entertainment Center & 7200 BTU backlit Fireplace



Master Suite w/ Standard King Bed



Master Dual Vanity and Shower

The 39 Front Bath features several at-home comforts that will keep you focused on fun all season long. Enjoy a full bath and a half, a kitchen island, a residential 20 Cu. Ft. refrigerator and fireplace.

This BEACON is perfect for having friends and family over or just relaxing!

39GBB BEACON GRAND BAR



SPECIFICATIONS

GVWR 18,000	Grey Water Cap. 90 gal	* unloaded and based off of an average
Dry Weight 14,600*	Black Water Cap. 45 gal	** to top of A/Cs
Cargo Carrying 3,400	Water Heater 10 gal	*** from pinbox to rear ladder based on standard build, no options
Width 101"	Furnace 42K BTU	**** unloaded and based off of an average
Height 12' 11" **	LP Cap. 60 lbs	
Length 38' 11" ***	Hitch Weight 3,100****	
Fresh Water Cap. 70 gal		



39GBB view of the spacious front living area with Mocho High Gloss Finish Cabinetry and the Grand Bar Buffet Counter



Grand Bar Buffet with Built-in Cooler



Master Suite w/ Standard King Bed



Master Shower and Closet

The 39 Grand Bar gives you plenty of counter space to entertain comfortably, with a deep buffet area with a built-in cooler.

The solid hardwood cabinetry, plenty of extra storage space and luxury amenities make the 39GBB perfect for the full-timer.

40FLB BEACON FRONT LIVING



40FLB view of the spacious front living area with opposing couches, and 55" Furrion flat screen TV

SPECIFICATIONS

GVWR 18,500
 Dry Weight 15,400*
 Cargo Carrying 3,100
 Width 101"
 Height 12' 11" **
 Length 40' 6" ***
 Fresh Water Cap. 54 gal

Grey Water Cap. 90 gal
 Black Water Cap. 45 gal
 Water Heater 10 gal
 Furnace 42K BTU
 LP Cap. 60 lbs
 Hitch Weight 3,300****

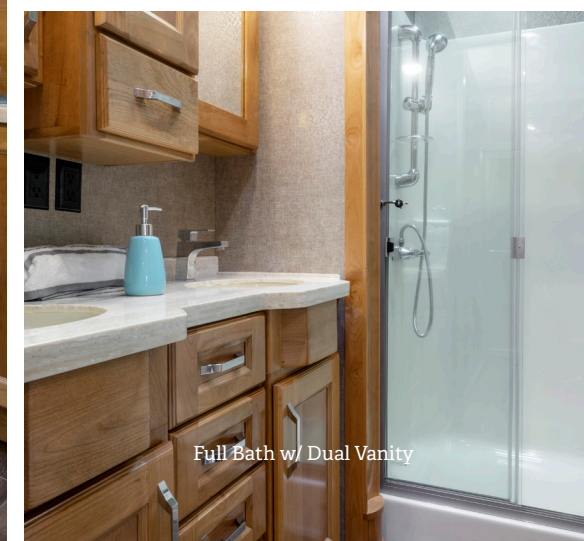
* unloaded and based off of an average
 ** to top of A/Cs
 *** from pinbox to rear ladder based on standard build, no options
 **** unloaded and based off of an average



Kitchen with High Gloss Finish Amber Glaze Cabinetry, and Residential 20 cu. ft. Whirlpool Refrigerator



Master Suite w/ Standard King Bed



Full Bath w/ Dual Vanity

The BEACON 40 Front Living puts entertainment and relaxation right up front! With two full couches and a love seat, the 40FLB provides more than enough space and comfort to watch the game with friends and family.

The Kitchen and Master Suite provide all the same luxury amenities you expect from Vanleigh.

LIVING AREA

- Full Profile Ceiling Throughout
- Full Overlay Hardwood Cabinetry and Faceframes
- Hardwood Slide-Out Fascia Throughout
- Hardwood Window Valances Throughout
- Hand Laid Vinyl Tile Flooring Throughout
- 8 ft Main Floor Slideout Boxes
- Multiplex Wiring System w/ Digital Homescreen
- Soft Touch Padded Vinyl Ceiling Throughout
- Recessed LED Ceiling Lighting Throughout
- Roller Shades (Day and Night)
- Dimming Function on Living and Bedroom Area Lighting
- High Quality Franklin Furniture, Made in the U.S.A.
- Ceiling Fan
- Dirt Devil® Central Vac System

KITCHEN

- Solid Surface Hanex Countertops
- 50/50 Stainless Steel Farm Sink with Sink Covers
- Residential Freendo Kitchen Faucet with Pull Down Sprayer
- Stainless Steel Microwave and Oven
- Residential Chef Collection Burner Range - Furrion
- 20 cu ft Whirlpool Refrigerator with Ice and Water in Door
- Magnum 1,000 Watt Pure Sine Wave Inverter
- Stainless Drawer Guides
- Freestanding, Solid Surface Dinette Table with 4 Chairs
- New Galley Window Featured in all Vanleigh Floorplans
- Fantastic Fan in Galley
- Hardwood Ceiling Décor with Recessed LED Lighting
- Hand-built Pantry for Maximum Storage
- Tile Backsplashes
- Convection Microwave

HOME ENTERTAINMENT

- 50 in LED TV in Living Area (55" LED TV in the 40FLB Living Area)
- Sound Bar with Surround Sound in Living Area
- Entertainment Center with Bluetooth, DVD, Aux. Controls
- Dual Exterior Speakers
- 32 in LED Bedroom TV
- Prewire for Solar Panel
- King Jack™ Digital Antennae

BEDROOM

- Cool Gel Memory Foam™ King Mattress
- Dual USB Ports in Nightstands
- Backlit Handrail to Bedroom
- Hardwood Window Valances
- Residential Hardwood Headboard
- Hardwood Drawer Dresser
- Full-Sized Wardrobe with Motion Sensored Lighting
- Full-Sized Underbed Storage Area

HEATING AND COOLING

- Dual Low-Pro 15000 BTU A/Cs Standard
- Prewire for Third 15000 BTU A/C with Triple Zone Thermostat
- 42000 BTU Furnace
- 7200 BTU Electric Fireplace
- R-45 Floor and Roof Insulation
- Whisper Quiet A/C System
- Fully Enclosed and Heated Underbelly with Heat Return
- 12V Electric Tank Heaters
- 10 gal Gas/Electric Quick Recovery Hot Water Heater
- 16 in Wide Return A/C Ducts for Max Airflow

EXTERIOR AND CONSTRUCTION

- Noble Select T-60 High Gloss Fiberglass Exterior
- Tubular Aluminum Framed Sidewalls
- 12V Electric Dump Gate Valves for Black and Gray Tank with Manual Override
- 16 in on Center Tubular Aluminum Floor
- 16 in on Center Aluminum Roof Joists
- 5 Sided Framed, Insulated, and Laminated Slide Room Boxes
- Aluminum A/C Boxes Welded to Aluminum Trusses
- Roof Backer for All Crown Molding
- Tubular Aluminum Upper Support Wall
- Dual Copper Water Manifolds
- Powdercoated Aluminum Wet Bay
- Standard 16 ply H Rated Tires
- Labeled Wire Harnesses
- Protective Wire Looms
- LED Exterior Lighting System
- Prewire for Backup Camera
- Slam-Latch Baggage Doors
- Motion Sensored Lighting in Pass-Through Compartment
- 8K Axles
- Electric Power Cord Reel
- Generator Prep
- Prewire for Traveler Satellite
- Dual Pane Windows
- Two Patio Awnings on Slide Boxes

OPTIONAL EQUIPMENT

- Goodyear "H" Rated Tires
- Disc Brakes
- 5.5 Onan Marquis Gold LP Gen w/ Prep
- Dishwasher (Excluding 40FLB)
- Splendide Front Load Washer & Dryer
- 3rd 15,000 Low Pro A/C
- Heat Pump (Per A/C)
- 4 Door Gas/Electric RV Fridge
- Queen Bed
- Truma "On-Demand" Water Heater
- 32" Outdoor TV

PAINT & FINISH COLORS



Waterfall Paint Scheme Sunlit Sand Paint Scheme Silver Sand Paint Scheme



Some interior furnishings not included. Some photos shown in literature have optional equipment. All options may not be available in every model. Because of progressive improvements, specifications, standard and optional equipment are subject to change without notice or obligation. For a complete and up-to-date list of available options and specifications, as well as Vanleigh's full line of RVs, visit vanleighrv.com.

FOR MORE INFORMATION GO TO:
vanleighrv.com



— BUILT AROUND YOU —

We've always prided ourselves in putting our owners first. To build the best product and service it, with the same quality and care. It's at the core of who we are. We appreciate your consideration of Vanleigh.

— Bob, Van and Leigh Tiffin

All Warranties are not created equal.



See why ours stand the test. At Vanleigh, building a quality coach is our primary focus. Our warranty reflects our confidence in the construction of our unit. From the beginning phases of production we have pressurized water on our units. Throughout our production process we run systems checks on every component in the RV. Once your RV is completed it is taken outside to our onsite campground where it is hooked up to full services and put through an additional PDI inspection. We are proud to offer this accountability to our customers along with the following basic limited warranties:

3 Year Construction Warranty:

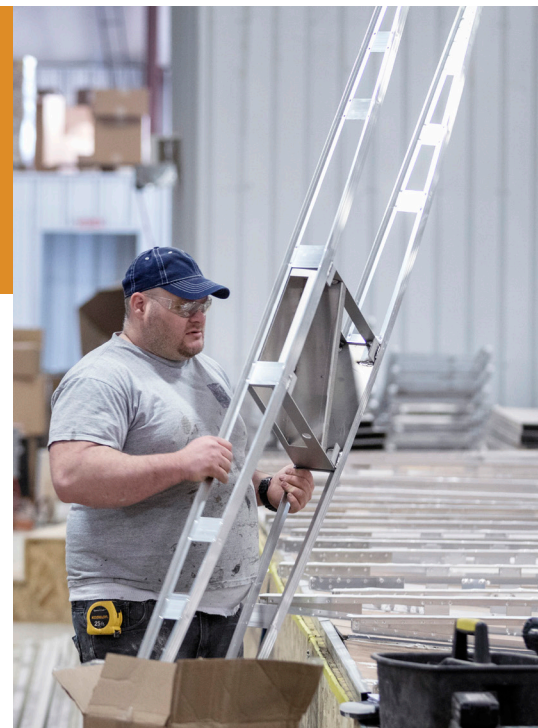
The structure of the welded frame of the RV is warranted for 3 years (36 months)

1 Year Base Limited Warranty:

Your coach has a limited warranty against defects in materials and workmanship for 12 months of ownership

Ongoing Owner Support

Vanleigh is proud to offer exceptional customer support. E-mail us at customercare@vanleighrv.com or call us at 662-612-4040. We build our units with tested and proven components. Many of these components carry their own respective warranties. Please see owner's manual for the warranties of components.



— BUILT AROUND YOU —



VANLEIGH

26 Industrial Drive | Burnsville, MS 38833
Phone 662-612-4040 | Fax 662-655-0913
customer@vanleighrv.com • www.vanleighrv.com



TIFFIN
MOTORHOMES

YOUR LOCAL VANLEIGH RV DEALER:

