



EAST WEST
Della Terra

Della Terra TRAVEL TRAILERS





27 K2D INTERIOR: 48" DINETTE, OVERHEAD STORAGE ABOVE SLIDE OUT, 81" INTERIOR HEIGHT, 8" CUBIC DOUBLE DOOR REFRIGERATOR



TRUE 72" X 80" KING SIZE BED WITH 9" INNERSPRING MATTRESS & BEDROOM USB PORTS



UNDERMOUNT STAINLESS STEEL FARMHOUSE SINK & HIGH RISE FAUCET



EXTENDED STORAGE DRAWERS UNDER DINETTE ON ROLLER GUIDES



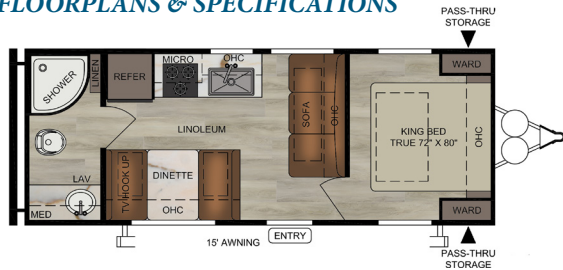
LARGE SPACIOUS PANTRY

**BEST BUILT
FAMILY PRODUCT**

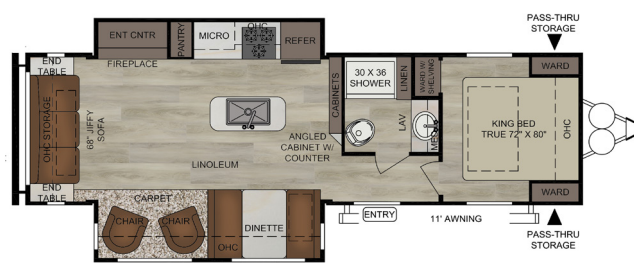
EAST WEST
Della Terra

<ol style="list-style-type: none"> 1. 2" X 3" FLOOR JOISTS 12" ON CENTER 2. 2" WALL CONSTRUCTION ON A 16" CENTER 3. ALUMINIUM SIDING 4. 5" BOWED TRUSS ROOF RAFTERS 5. 5/8" TONGUE & GROOVE PLYWOOD FLOOR DECKING 6. ONE-PIECE SEAMLESS SUPERFLEX™ ROOF (12 YEAR MANUFACTURER DEFECT WARRANTY) 7. R-7 FIBERGLASS INSULATION THROUGHOUT 	<ol style="list-style-type: none"> 8. 13 PLY CROSS MICRO-LAMINATED BEAM HEADER ABOVE SLIDE OUT 9. CHAMBERED CHASSIS 10. FULLY FINISHED PASS-THRU STORAGE 11. SMOOTH METAL SKIRTING 12. AUTOMOTIVE DEPOSITION COATED FRAME 13. DIAMOND PLATE ROCK GUARD 14. 3/8" ROOF DECKING (FULL WALK-ON ROOF) 15. ONE PIECE LINOLEUM FLOORING 	<ol style="list-style-type: none"> 16. TINTED SAFETY GLASS WINDOWS 17. FULLY ENCLOSED & HEATED UNDERBELLY WITH ANTI-PUNCTURE UNDERBELLY WRAP 18. ENCLOSED TANKS 19. LP BOTTLE COVER WITH EASY ACCESS 20. 15,000 BTU DUCTED ROOF, HIGH OUTPUT A/C WITH QUICK COOL 21. ELECTRIC POWER TONGUE JACK WITH LED LIGHT 22. TRIPLE ENTRY STEP
---	--	---

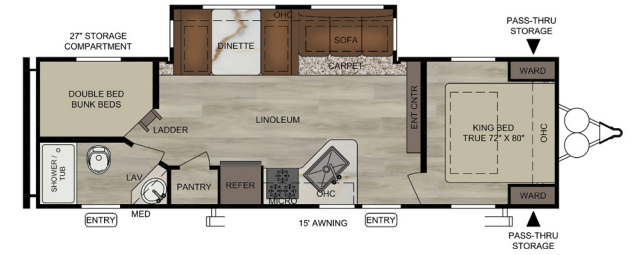
FLOORPLANS & SPECIFICATIONS



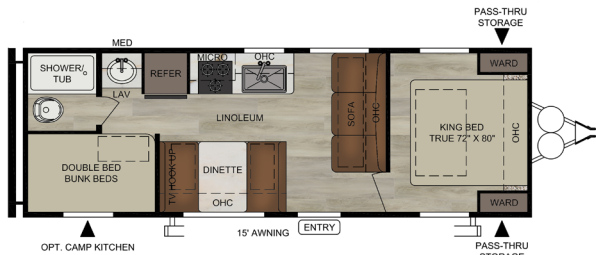
25 KRB



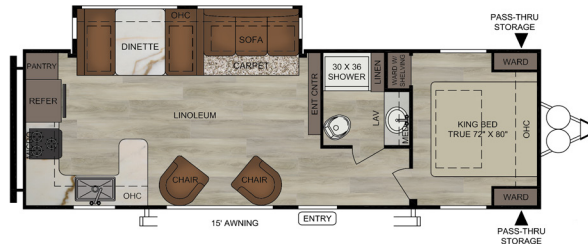
29 K2S



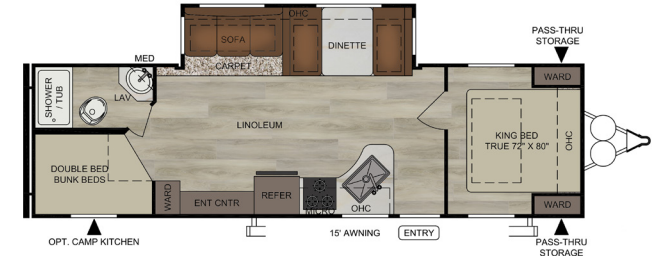
27 K2D



27 KNS



29 KRK



28 KBS

FLOORPLAN LEGEND	
CAB	CABINET
ENT CNTR	ENTERTAINMENT CENTER
LAV	BATHROOM SINK
MED	MEDICINE CABINET
MICRO	MICROWAVE
OHC	OVERHEAD CABINET
REFER	REFRIGERATOR
WARD	WARDROBE

MODELS	DIMENSIONS				WEIGHT (LBS.)			TANKS (GALS.)			AWNING
	Floor Plan	King Bed 72" X 80"	Length of Trailer w/Hitch	Exterior Height	Interior Height	Unloaded Vehicle Weight* (UVW)	Dry Hitch Weight	Cargo Carrying Capacity (CCC)	Fresh Water Capacity	Grey Waste Water Capacity	Black Waste Water Capacity
25 KRB	KING	28'1"	10'8"	81"	4973	565	2509	51	40	40	15'
27 KNS	KING	29'1"	10'8"	81"	5319	715	2351	51	40	40	15'
27 K2D	KING	34'4"	11'0"	81"	6835	785	2750	51	80	40	15'
28 KBS	KING	35'4"	11'0"	81"	6952	945	2571	51	80	40	15'
28 KRK	KING	34'3"	11'2"	81"	6898	780	2266	51	80	40	15'
29 KRK	KING	34'0"	11'2"	81"	6835	987	2935	51	80	40	15'
29 K2S	KING	35'3"	11'3"	81"	8178	936	1558	51	80	40	11'
31 K3S	KING	37'5"	11'3"	81"	8745	896	2134	51	80	40	15'

*Weight represents an average on how most units are built excluding additional options

SPECIFICATION DEFINITIONS

GVWR (Gross Vehicle Weight Rating) - is the maximum permissible weight of the unit when fully loaded. It includes all weights, inclusive of all fluids, cargo, optional equipment and accessories. For safety and product performance do NOT exceed the GVWR.

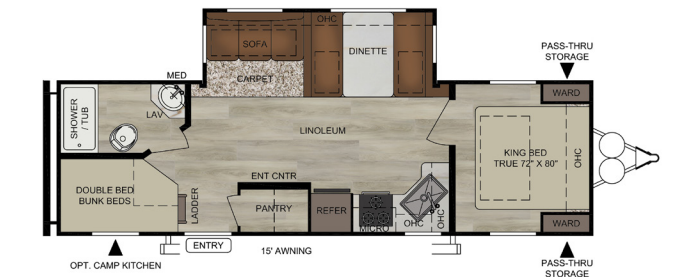
GAWR (Gross Axle Weight Rating) - is the maximum permissible weight, including cargo, fluids, optional equipment and accessories that can be safely supported by a combination of all axles.

UVW (Unloaded Vehicle Weight)* - is the typical weight of the unit as manufactured at the factory. It includes all weight at the unit's axle(s) and tongue or pin and LP Gas. The UVW does not include cargo, fresh potable water, additional optional equipment or dealer installed accessories. *Estimated Average based on standard build optional equipment.

CCC (Cargo Carrying Capacity)** - is the amount of weight available for fresh potable water, cargo, additional optional equipment and accessories. CCC is equal to GVWR minus UVW. Available CCC should accommodate fresh potable water (8.3 lbs per gallon). Before filling the fresh water tank, empty the black and gray tanks to provide for more cargo capacity. **Estimated average based on standard build optional equipment

Each Forest River RV is weighed at the manufacturing facility prior to shipping. A label identifying the unloaded vehicle weight of the actual unit and the cargo carrying capacity is applied to every Forest River RV prior to leaving our facilities. The load capacity of your unit is designated by weight, not by volume, so you cannot necessarily use all available space when loading your unit.

All information contained in this brochure is believed to be accurate at the time of publication. However, during the model year, it may be necessary to make revisions and Forest River, Inc., reserves the right to make all such changes without notice, including prices, colors, materials, equipment and specifications as well as the addition of new models and the discontinuance of models shown in this brochure. Therefore, please consult with your Forest River dealer and confirm the existence of any materials, design or specifications that are material to your purchase decision.



28 KRK



31 K3S

INTERIOR FEATURES

- MORTISE AND TENON SHAKER STYLE CABINETS
- 22" OVEN
- 12-VOLT EXHAUST FAN AND LIGHT
- SHELVING IN OVERHEAD KITCHEN CABINETS
- WOOD DRAWERS W/ FURNITURE GRADE PLYWOOD SIDES
- FULL EXTENSION BALL BEARING DRAWER GLIDES
- UPGRADED RESIDENTIAL FURNITURE
- BOOTH DINETTE W/ LARGE PICTURE WINDOW
- TV & CABLE PREP IN LIVING ROOM AND BEDROOM
- 30,000 BTU SUBURBAN® FORCED AIR DSI FURNACE W/ DIGITAL THERMOSTAT
- STRUT LIFTED STORAGE UNDER MASTER BED
- INCREASED FOOT SPACE AT THE FOOT OF BED
- SOLID BEDROOM PRIVACY DOORS

PACKAGE 1

- 81" CEILING HEIGHT
- HIGH DEFINITION/AMPLIFIED TV ANTENNA
- TWO MARINE GRADE EXTERIOR SPEAKERS
- CABLE/SATELLITE READY
- USB CHARGING STATIONS
- BLACK TANK FLUSH
- HOT & COLD OUTSIDE SHOWER
- GREEN PACKAGE - LED MUSHROOM LIGHTS
- DETACHABLE POWER CORD
- NIGHT SHADE
- FURRION® BACKUP CAMERA READY
- DESIGNER COUNTER TOPS
- STABILIZER JACKS
- FOOT FLUSH TOILET
- DUCTED 15,000 BTU ROOF AIR CONDITIONER W/ QUICK COOL
- DEEP SEATED STAINLESS STEEL FARMHOUSE SINK & HIGH RISE FAUCET
- FULLY FINISHED PASS-THRU STORAGE

PACKAGE 2

- WATER HEATER BYPASS
- ABS TUB SURROUND
- RADIAL TIRES
- POWER AWNING
- LED AWNING LIGHTS
- 3-BURNER RANGE WITH OVEN IN PLACE OF COOK TOP
- TRIPLE ENTRY STEP
- SOLAR PREP
- EXTERIOR LED LIGHTS
- INTERIOR LED LIGHTS
- POWER TONGUE JACK
- EXTERIOR SWING ARM ENTRY ASSIST HANDLE
- FULL LENGTH CABINET IN SLIDE OUT*
- CD/DVD AND AM/FM BLUETOOTH STEREO
- WARDROBE IN BEDROOM*
- SOLID BEDROOM DOOR*
- TINTED SAFETY GLASS WINDOWS
- UPGRADED BUNK MATS
- UPPER BUNK WINDOW
- R.V.Q. QUICK DISCONNECT*

MANDATORY OPTIONS

- SPARE TIRE & CARRIER
- SKYLIGHT ABOVE SHOWER
- AUTOMOTIVE DEPOSITION COATED FRAME
- KING BED - 72" X 80"
- 9" INNERSPRING MATTRESS
- ENCLOSED & HEATED UNDERBELLY
- ENCLOSED TANKS
- ELECTRIC FLUSH FLOOR SLIDE OUTS*
- DOMETIC® DOUBLE DOOR 8' CUBIC REFRIGERATOR
- INTERIOR DESIGN PACKAGE - LED ROPE LIGHTS, KITCHEN BACK SPLASH & UPGRADED BATH FIXTURES

SECURITY & SAFETY

- LP LEAK, SMOKE & CARBON MONOXIDE DETECTORS
- FIRE EXTINGUISHER
- WELDED HEAVY DUTY SAFETY CHAINS
- ELECTRIC BRAKES (ALL WHEELS)
- GFCI RECEPTACLES
- ANSI 119.2 CERTIFIED
- MEETS ALL NATIONAL HIGHWAY ADMINISTRATIVE SPECIFICATIONS
- RVIA APPROVED PRODUCT

*W/A: WHERE APPLICABLE

OPTIONS

- FURRION® LARGE LED TV
- FURRION® MEDIUM LED TV
- 50 AMP SERVICE WITH 2ND AIR PREP
- 50 AMP SERVICE 2ND AIR
- OPTIONAL CAMP KITCHEN* (AVAILABLE ON THE FOLLOWING: 27KNS, 28KBS, 28KRD, 31K3S)



Learn More
Scan this barcode using a QR Reader on your smart phone to learn more about Forest River.



A Berkshire Hathaway company.



www.ForestRiverBuyLocal.com



24/7 EMERGENCY
ROADSIDE ASSISTANCE
WITH VEHICLE PURCHASE*

TOWING
JUMP-STARTS
TIRE CHANGES
FLUID DELIVERY
LOCKOUT
SERVICE

WINCH-OUT
MOBILE MECHANIC
TECHNICAL
SUPPORT
DEALER LOCATOR
SERVICES



*VALID FOR 1 YEAR FROM DATE OF PURCHASE



PRE-DELIVERY INSPECTION FACILITY

20,000 square feet of quality assurance. The bare essentials for a premium product. This state-of-the-art facility gives immediate daily feedback to production for quality assurance in every unit built.



*Optional camp kitchen

EAST TO WEST takes pride in our five guiding principles and our corporate philosophy which focuses on people working together to create high quality, value added products that deliver the ultimate RV experience!

SUSTAINABLE MANUFACTURING

An important objective to our strategy and operations is to implement economically sound manufacturing processes to reduce/ recycle waste & conserve energy and natural resources.

CORPORATE & SOCIAL RESPONSIBILITY

We foster a business environment in which we focus on and practice:
- Ethical Labor Practices
- Teamwork
- Philanthropy
- Volunteering

CULTURE & VALUES

We are a forward thinking company committed to fostering a culture of teamwork. By being transparent, we encourage our employees to think outside the box and make a difference!

QUALITY & CONSTRUCTION

Our team takes pride in each unit we build. Our manufacturing standards and point to point inspections ensure each EAST TO WEST brand is built to the same quality specifications every time.

OUR COMMITMENT

We strive to provide the highest quality products at the best possible price to our customers. We invite you to be a part of the EAST TO WEST family and we look forward to exceeding your expectations!

Your premier EAST TO WEST dealer:

2901 CR 7 N | Elkhart, IN 46514 | 574.264.6664 | www.EastToWestRV.com

©2019 East To West, Inc. a Division of Forest River, Inc., a Berkshire Hathaway Company. All Rights Reserved.



A Berkshire Hathaway company.