

ZINGER



CROSSROADS
Recreational Vehicles

*LITE MODELS

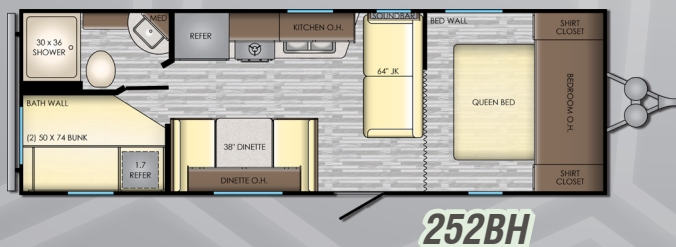
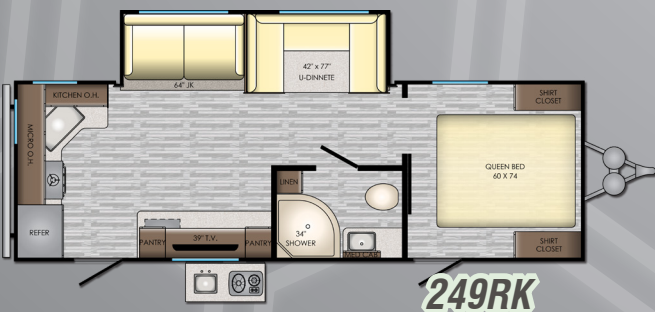
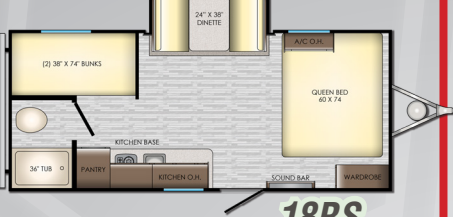
*STANDARD MODELS

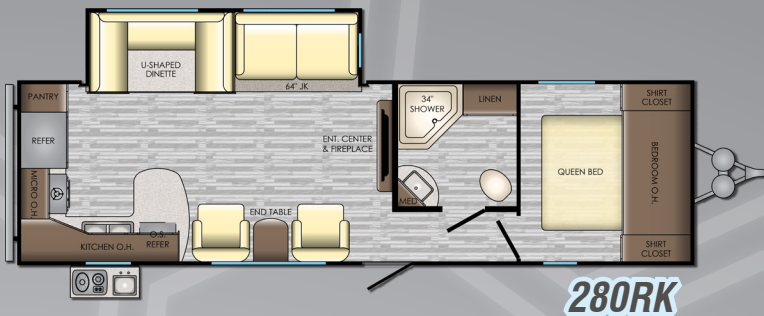
MODEL	DRY WT.	GVWR	HITCH	FRESH	BLACK	GRAY	CC	LENGTH	HEIGHT
ZR-18BH	3246	4520	520	27 Gal	30 Gal	30 Gal	1274	21' 11"	9' 7"
ZR-18RD	3290	4520	524	27 Gal	30 Gal	30 Gal	1230	21' 6"	9' 7"
ZR-18RK	3410	4470	476	27 Gal	30 Gal	30 Gal	1060	22' 6"	9' 7"
ZR-18BS	3694	4490	496	27 Gal	30 Gal	30 Gal	796	22' 6"	9' 7"
ZR-18DS	4350	5570	466	45 Gal	30 Gal	30 Gal	1220	22' 6"	10' 3"
ZR-205BH	4407	7540	540	45 Gal	30 Gal	30 Gal	3133	24' 11"	10' 5"
ZR-211RD	4364	6500	552	45 Gal	30 Gal	30 Gal	2136	25' 2"	10' 5"
ZR-229RB	5510	7730	730	51 Gal	44 Gal	88 Gal	2220	26' 9"	10' 5"
ZR-249RK	5974	7600	748	51 Gal	44 Gal	88 Gal	1586	28' 11"	11' 2"
ZR-252BH	5003	7560	564	45 Gal	30 Gal	30 Gal	2557	28' 11"	10' 5"
ZR-270BH	5986	7730	720	51 Gal	44 Gal	44 Gal	1734	31' 11"	11' 2"
ZR-280BH	6477	9480	680	51 Gal	44 Gal	88 Gal	2851	32' 6"	11' 2"
ZR-280RK	6660	9610	808	51 Gal	44 Gal	88 Gal	2950	32' 11"	11' 2"
ZR-290KB	6619	9670	868	51 Gal	44 Gal	44 Gal	3051	33' 6"	11' 2"
ZR-292RE	7117	9600	802	51 Gal	44 Gal	44 Gal	2483	33' 6"	11' 2"
ZR-298BH	6814	9620	828	51 Gal	88 Gal	88 Gal	2806	33' 11"	11' 2"
ZR-299RE	TBD	TBD	TBD	TBD	TBD	TBD	TBD	TBD	TBD
ZR-320FB	7600	9840	1040	51 Gal	44 Gal	44 Gal	2240	35' 11"	11' 3"
ZR-326BH	7892	9800	1008	51 Gal	88 Gal	88 Gal	1908	36' 11"	11' 3"
ZR-328SB	7756	9740	942	51 Gal	44 Gal	44 Gal	1984	36' 6"	11' 3"
ZR-330BH	7916	9800	1004	51 Gal	88 Gal	44 Gal	1884	37' 6"	11' 3"
ZR-331BH	8770	11400	1208	51 Gal	88 Gal	44 Gal	2630	37' 6"	11' 3"
ZR-333DB	8214	10400	904	51 Gal	88 Gal	44 Gal	2186	37' 7"	11' 3"
ZR-340RE	TBD	TBD	TBD	TBD	TBD	TBD	TBD	TBD	TBD

www.crossroadsrv.com • (260) 593 - 3850

*SEE WEBSITE FOR ADDITIONAL SPECS

SINGLE AXLE UNITS

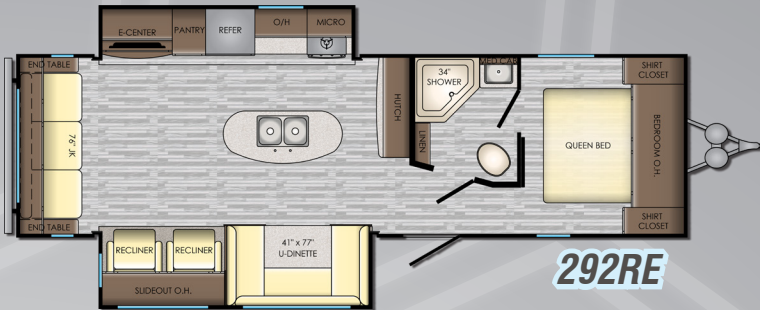




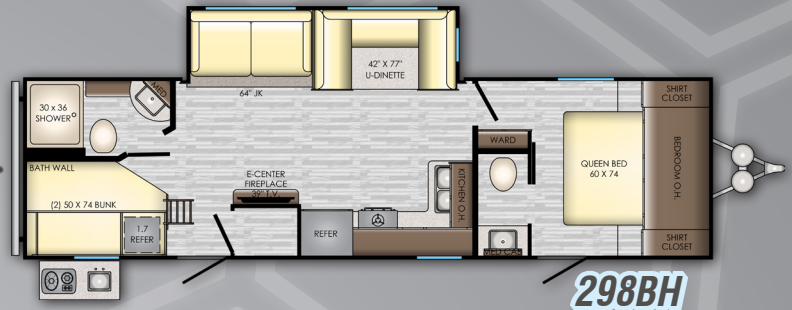
280RK



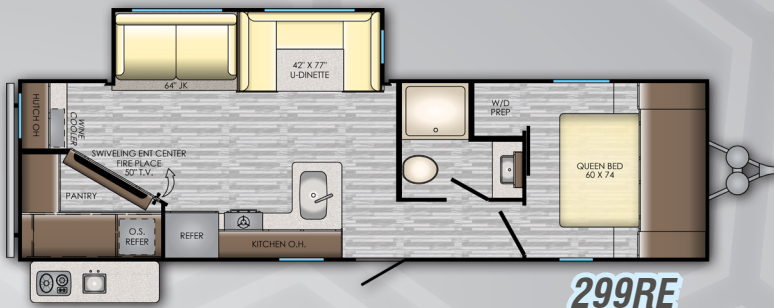
290KB



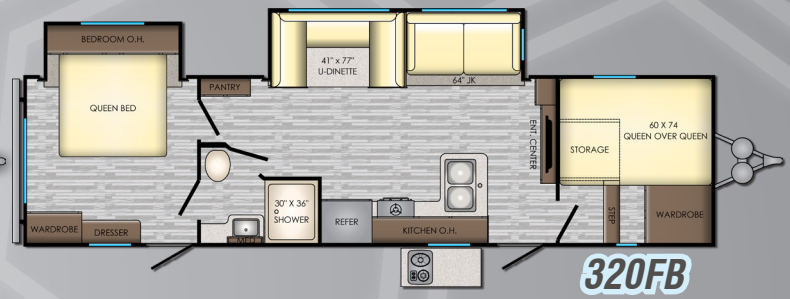
292RE



298BH



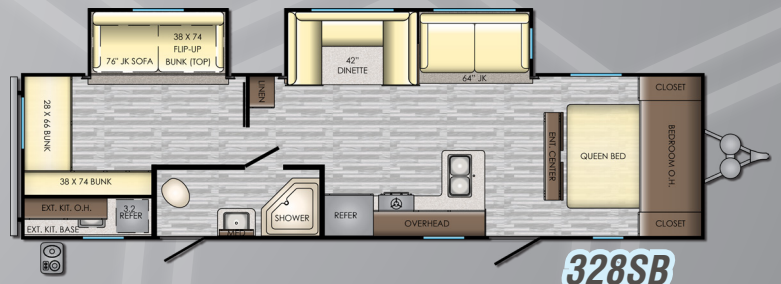
299RE



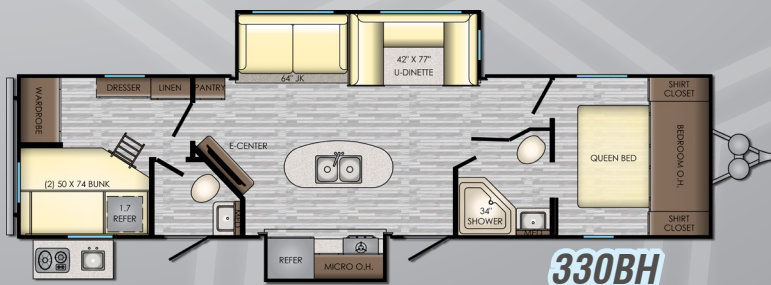
320FB



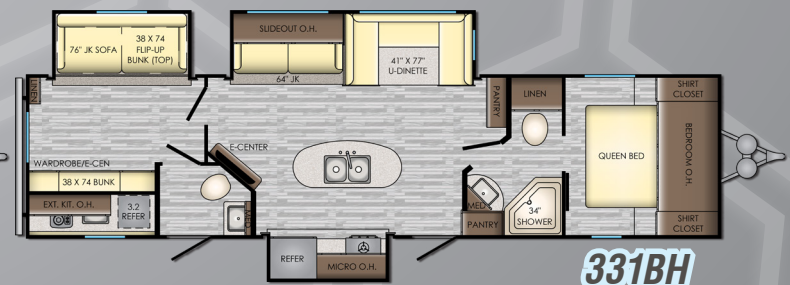
326BH



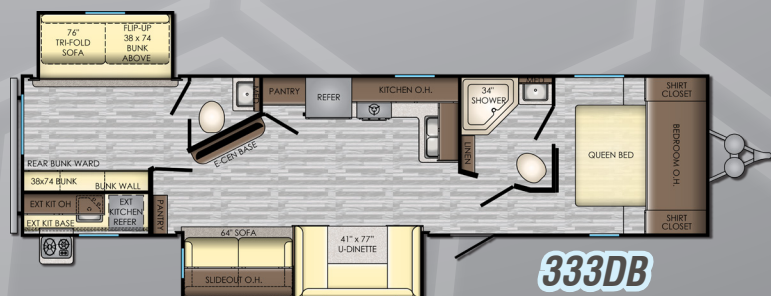
328SB



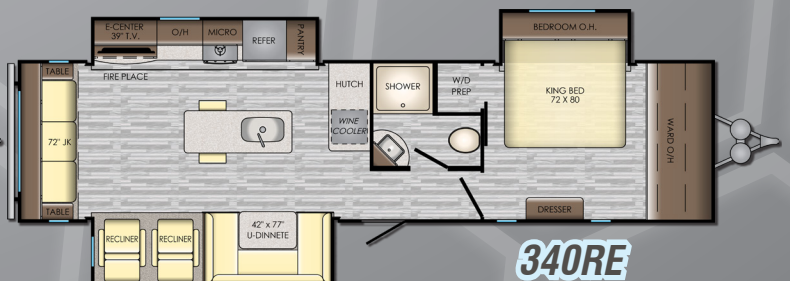
330BH



331BH



333DB



340RE

STANDARDS & OPTIONS

STANDARDS

LIVING ROOM

- Designer Valances
- Storage Doors Below Booth Dinette (VBM)
- Three Decor Options
- Wood Slide-Out Fascia
- AM/FM Stereo System w/ Bluetooth Soundbar
- Residential Wood Blinds (VBM)
- Chair Rail in Slide-Out
- Flush Floor Slide-Out w/ Large Dinette Windows
- Sleeper Sofa
- LED Lighting
- LED Accent Lighting
- Generous Storage
- 81" Interior Ceiling Height
- USB Port
- Fireplace (VBM)
- Super Booth Dinette (VBM)

KITCHEN

- Stainless Steel High Rise Faucet
- Backsplash (VBM)
- Stainless Steel Sink
- Range Hood w/ Light & Exhaust Fan
- Wall Mounted System Monitor Panel (VBM)
- Maple Cabinet Doors
- 6 Cu. Ft. Gas/Electric Refrigerator (VBM)
- Maple Cabinet Drawers
- Steel Ball Bearing Drawer Guides
- Oven
- Microwave

BATHROOM

- Large Lavatory Bowl
- Spacious Shower/Tub & One-Piece Surround
- Foot Flush Toilet
- Mirrored Medicine Cabinet
- Linen Storage (VBM)
- Glass Shower Door & Neo Angle Shower (VBM)
- Shower Curtain w/ Curved Shower Track (VBM)

BEDROOM

- 60" X 74" Mattress
- TV Hook-up
- Coordinated Window Treatments
- Bedspread
- Night Stands w/ Outlets on Each Side
- USB Outlet

EXTERIOR

- Fully Enclosed and Forced Air Heated Underbelly (VBM)
- Backup Camera Prep
- Solar Prep
- Friction Hinge Entry Door
- Keyed-A-Like Exterior Doors
- Aerodynamic Front End
- Easy Open Entry Step
- Bumper with Drain Hose Storage and End Caps
- Speakers w/ LED Accents
- Molded Rain Gutters with 3" Drip Spouts
- Large Assist Grab Handle - (VBM)
- Black Tank Flush - (VBM)
- Secure Stance Steps (Main Door) (VBM)
- 6 Gal Gas/Elec DSI Water Heater (VBM)
- Outside Shower (VBM)
- Radial Tires

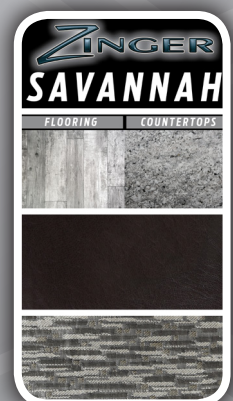
OPTIONS

- Upgraded Insulation
- Rear Ladder
- 15K BTU Main A/C
- 50 Amp Service w/ 2nd A/C Prep (2+ Slides Only) (Std in 299RE/340RE)
- 2nd A/C in Bedroom (13.5K)
- 39" TV (VBM) (Standard in 292RE/340RE)
- 50" TV (VBM)

SINGLE AXLE OPTIONS

- 13.5K A/C (8K Standard)
- 2 Stabilizer Jacks - Lite Single Axle
- Spare Tire - Lite Single Axle

*VBM: Varies By Model



www.crossroadsrv.com • 1140 W. Lake St Topeka, IN 46571 • (260) 593 - 3850

DISCLAIMER: Product information is as accurate as possible as of the date of publication of this brochure. All features, floor plans, and specifications in this brochure are subject to change without notice. Please also consult CrossRoads' web site at www.crossroadsrv.com for more current product information and specifications. Tow Vehicle Disclaimer. CAUTION: Owners of CrossRoads recreational vehicles are solely responsible for the selection and proper use of tow vehicles. All customers should consult with a motor vehicle manufacturer or their dealer concerning the purchase and use of suitable tow vehicles for CrossRoads products. CrossRoads disclaims any liability or damages suffered as a result of the selection, operation, use or misuse of a tow vehicle. CROSSROADS' LIMITED WARRANTY DOES NOT COVER DAMAGE TO THE RECREATIONAL VEHICLE OR THE TOW VEHICLE AS A RESULT OF THE SELECTION, OPERATION, USE OR MISUSE OF THE TOW VEHICLE. REFERENCE CROSSROADS RV COMPANY OWNERS MANUAL FOR LIMITED WARRANTY DETAILS. *Length is defined as the distance from the centerline of hitch pin/coupler to rear bumper of trailer.



Apr. 2019