

# CONNECT

lightweight travel trailers

**KZ**  
Est. 1972



**CONNECT SE & CONNECT**

lightweight travel trailers





## Getting into the action JUST GOT EASIER!

The all-new **CONNECT SE** is available in several diverse floorplans. Slideouts make SE feel spacious and welcoming.

Modeled after Connect but lighter and lower-priced, the **SE** is nicely outfitted, including:

- Handcrafted solid maple cabinetry
- Queen beds
- Fiberglass exterior
- Aerodynamic front profile

C312BHKSE : Kona décor



Extra-wide interior doorways throughout floorplan

The bunkhouse slideout with second dinette gives

### KIDS ROOM TO PLAY. ➤

Sleep three comfortably, with third bunk atop the closet cabinet.  
(C312BHKSE shown)



### ➤ EXTRA-LARGE DINETTE

accommodates the whole family, with additional storage space under the dinette seats. (C312BHKSE shown)



### ➤ UNDER-OVEN DRAWER

neatly fits bulky kitchen items.  
(C312BHKSE shown)

### KITCHEN ➤

features

- gas cooktop with glass cover and built-in oven
- stainless steel microwave
- double-door 8-CU-FT refrigerator
- spacious pantry





C271RLSE : Kona décor

Handcrafted solid wood glazed maple cabinetry, and residential-style furniture add

## CHARM AND COMFORT.

Storage is well placed, as is the convenient 12V outlet with dual USB port.

Residential grade linoleum and...

...carpet resist wear and tear.

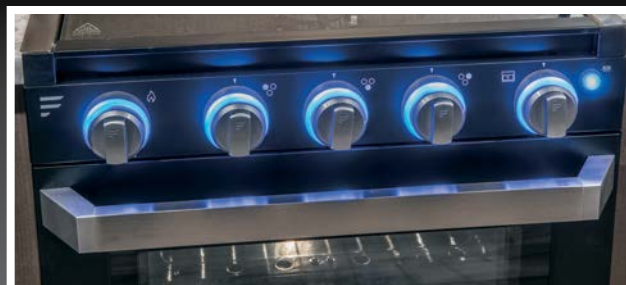
## BEDROOM features:

- High-thread-count quilted and reversible comforter
- LED lighting
- Pleated nightshades
- His-and-hers full-length closets on both sides of the bed (C271RLSE shown)



## SEAMLESS COUNTERTOPS

with a deep under-mount stainless steel kitchen sink and stainless steel high-rise faucet. (C271RLSE shown)



Three-burner gas drop-in cooktop with built-in oven includes a

## GLASS COVER THAT ADDS COUNTER SPACE,

plus LED-lit knob accents. (C271RLSE shown)



**STANDARDS**

- 3/8" Fully Walk-On Roof Decking
- 1-Piece Seamless Roof w/SuperFlex® Roofing Material
- UVA & UVB Resistant Gelcoat Lamilux® Exterior F/G
- Protective Front Diamond Plate
- Extra-Large Baggage Doors w/Magnetic Catches
- KZ Easy-Catch Baggage Door Systems
- LED Exterior Lighting
- Outside Entertainment Prep (EXT 110V & cable outlets)
- Outside Shower
- (4) Stabilizer Jacks
- (2) 20# LP Bottles w/Bottle Cover
- Satellite & Cable Hookups
- 30 AMP Service
- 13,500 BTU A/C
- Water Heater Bypass
- Black Flush Tank
- Digital TV Antenna w/Booster
- 3-Burner Range w/Oven
- High-Rise Faucet
- Rich Woodbridge Maple Cabinetry

- Hand-Crafted Mortise & Tenon Glazed Cabinet Doors
- Roller Ball Bearing Drawer Glides
- Linoleum Throughout
- LED Interior Lighting
- Nightshades
- Shower Surround
- Skylight over Tub
- Roof Vent in Bath
- High Thread Count Quilted Reversible Queen Bedspread

**OPTIONS**

- 15,000 BTU A/C IPO 13,500 BTU A/C
- 8 CU FT Gas/Electric Refrigerator IPO 10 CU FT 12V Refrigerator
- 50 AMP Service for 2nd A/C

**KZ ADVANTAGE PACKAGE  
(MANDATORY OPTION)****EXTERIOR**

- Color Infused Titanium Exterior Fiberglass
- Friction-Hinged Entry Door
- Power Front Jack

- Key Alike Program for Baggage & Entry Doors
- Magnetic Catches for Baggage Doors
- Screenshot on Entry Door
- Exterior Speakers
- Spare Tire & Carrier
- Amber Light Step
- Solar Prep
- Backup Camera Prep
- Nitrogen Filled Tires
- Battery Disconnect Switch
- Climate Package (heated, insulated & enclosed underbelly)
- Polished Chrome Wheels
- Black Tank Flush
- Outside Shower
- Outside Kitchen (select models)

**INTERIOR**

- Jackknife w/Middle Console
- Drop-In Cooktop w/Glass Cover & Oven
- 12V Dual USB Port in LR
- Seamless Countertops w/Deep Undermount Stainless Steel Kitchen Sink
- Plywood Bed Base w/Gas Struts

- 12V USB in Bunk Area
- (2) 6.5" Interior Speakers
- Multimedia Stereo w/Bluetooth, DVD & NFC Wireless Connectivity
- Foot Flush Toilet
- Cabinet Doors at Booth Dinette
- Pleated Shades
- Wider Pocket/Passage Interior Doors

**KZ CONVENIENCE PACKAGE  
(MANDATORY OPTION)****EXTERIOR**

- Power Awning w/LED Light Strip
- Omnidirectional HDTV Antenna
- LED Lights in Exterior Speakers

**INTERIOR**

- Residential-Grade Linoleum
- 10 CU FT 12V Refrigerator w/Dual Temperature Control
- Stainless Steel Microwave
- Stainless Steel Residential Kitchen Faucet
- Interior Control Switches on Overhead End Cabinet
- Accent Trim on Corners/Entry Doors

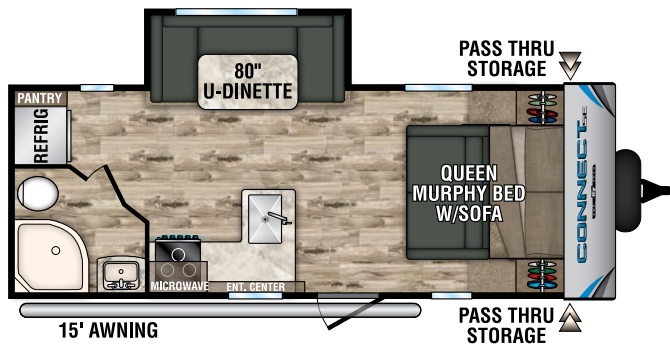
Ultra Lightweight Travel Trailers	C201RBSE	C231BHKSE	C231RBKSE	C261BHKSE	C271RLSE	C312BHKSE
UVW (Unloaded Vehicle Weight)*	4,690	5,295	5,260	5,850	5,730	7,255
Dry Hitch Weight*	470	675	505	640	720	650
Dry Axle Weight*	4,220	4,620	4,755	5,210	5,010	6,605
NCC (Net Carrying Capacity)	1,310	1,505	1,540	1,150	1,070	1,045
GVWR	6,000	6,800	6,800	7,000	6,800	8,300
Interior Height	78"	78"	78"	78"	78"	78"
Exterior Height w/ A/C	10' 8"	10' 8"	10' 8"	10' 8"	10' 8"	10' 8"
Exterior Width	96"	96"	96"	96"	96"	96"
Exterior Length	24' 10"	27' 8"	27'	31' 10"	30' 8"	36' 11"
Refrigerator (cu. feet)	10	10	10	10	10	10
Water Heater Cap. (gal. G/E w/DSI)	6	6	6	6	6	6
Fresh Water Cap. (gal.)	40	40	40	40	40	40
Waste Water Cap. (gal.)	32	32	32	32	32	32
Gray Water Cap. (gal.)	32	32	32	32	32	32
LP Gas Cap. (lbs.)	40	40	40	40	40	40
Furnace BTUs (1,000s)	30	30	30	30	30	30
Tire Size	14"	14"	14"	14"	14"	15"
Awning	15'	18'	17'	20'	20'	18'

\*This weight reflects the rolling average unit weight for each model. Your trailer weight will vary according to optional equipment.

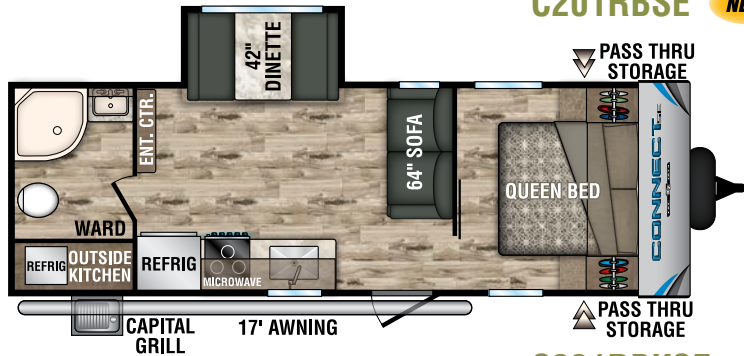
DÉCOR



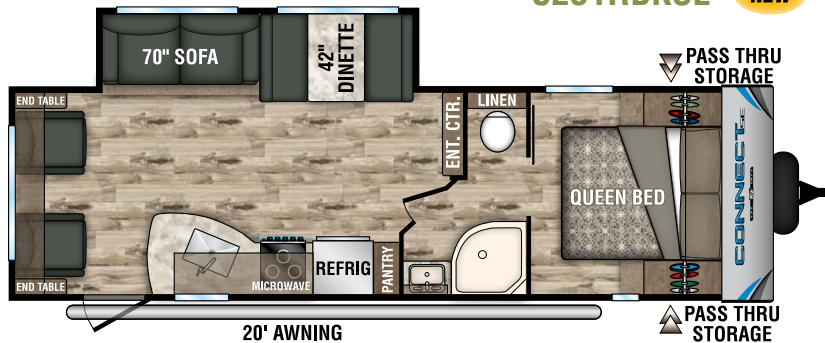




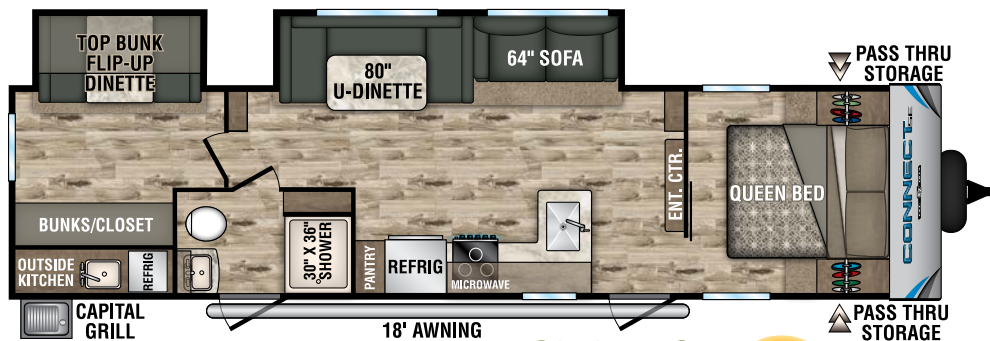
**C201RBSE** **NEW**



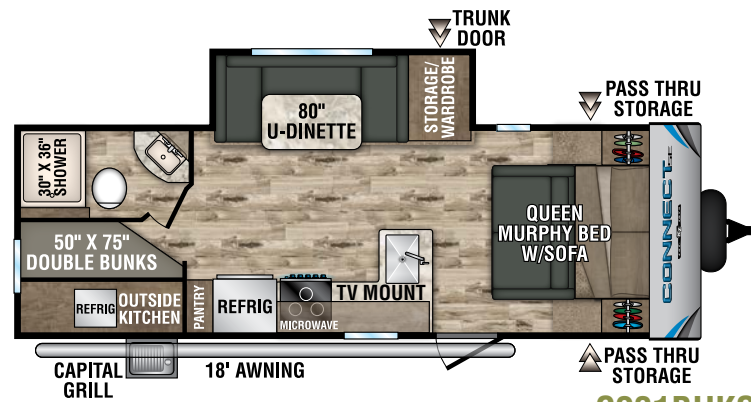
**C231RBKSE** **NEW**



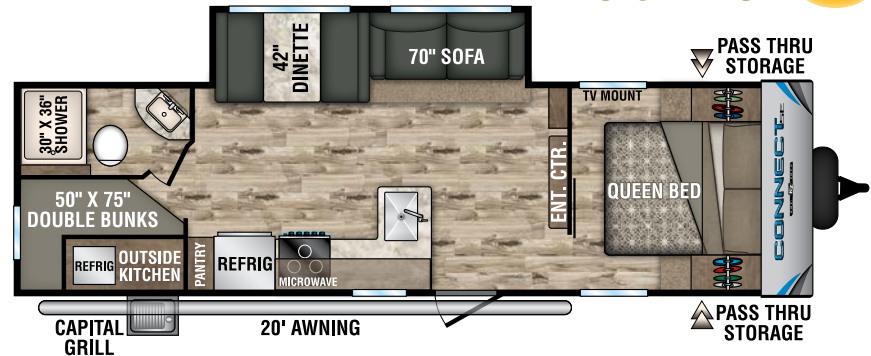
**C271RLSE** **NEW**



**C312BHKSE** **NEW**



**C231BHKSE** **NEW**



**C261BHKSE** **NEW**

## SENSIBLE LAYOUTS

The generous pantry is situated next to the refrigerator. While the oversized bunkhouse features double windows and under-bunk storage. (C261BHKSE shown)





## Stylish, adventurous and **BEAUTIFUL INSIDE & OUT!**

Affordable yet well-appointed, **CONNECT** offers creative floorplans. You'll love the gorgeous décor, entertainment features and high-end fiberglass exterior.

**CONNECT** is packed with standard features typically available only as options:

- Wide doorways
- Residential kitchen with pantry
- Flush-floor slideouts
- Storage galore



C291RL : Kona décor

### RESIDENTIAL- GRADE FURNITURE

performs double duty – the solid hardwood table includes a built-in hinged storage leaf, and the front-hinged dinette seats lift up for more storage. (C291RL shown)



### COMFORTS AND AESTHETICS OF HOME

Kitchens feature solid wood glazed maple cabinetry with modern bar handles and frosted glass accents.

The 8-cubic-foot gas/electric  
**DOUBLE-DOOR REFRIGERATOR**  
 with veggie bin. Deep under-mount  
**STAINLESS STEEL KITCHEN SINK**  
 with stainless steel high-rise pull-down  
 sprayer faucet. (C291RL shown)





Wood-grain linoleum  
resists cold-cracking

Island and L-shaped  
**KITCHEN  
FLOORPLANS**  
create spaciousness,  
with fresh LED lighting  
throughout. The seamless  
countertops are durable,  
beautiful and easy to clean.

**WARMTH & CHARM**  
with the optional  
30-inch fireplace.  
LED TV and multimedia  
stereo with Bluetooth DVD  
and NFC wireless connectivity.



**60 X 80-INCH QUEEN BED**

with overhead cabinets and under-bed storage,  
nightstands, and built-in padded headboard.

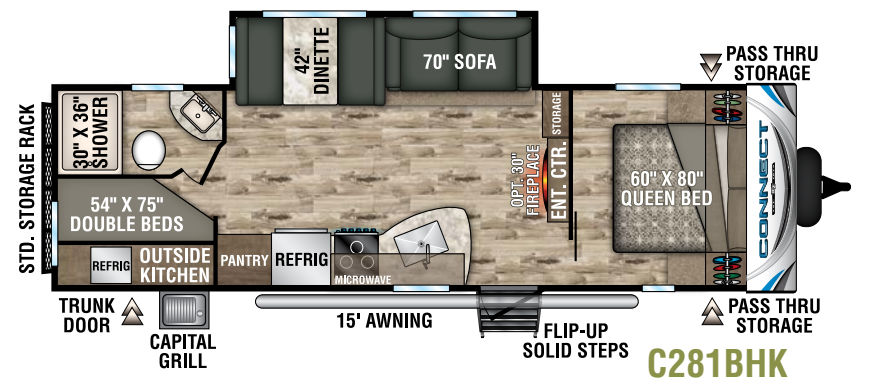
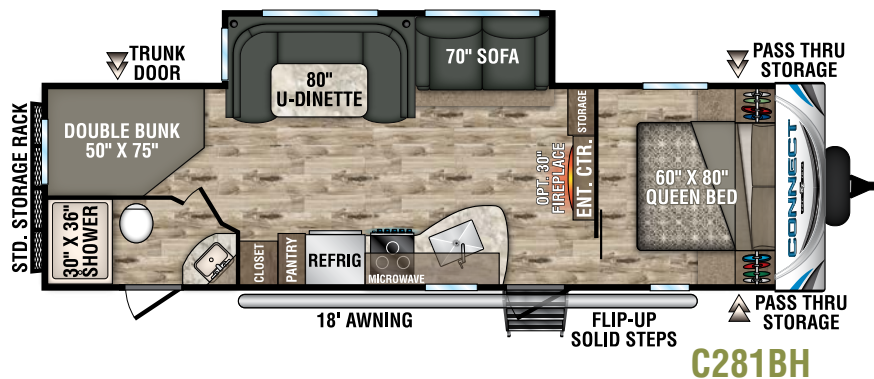
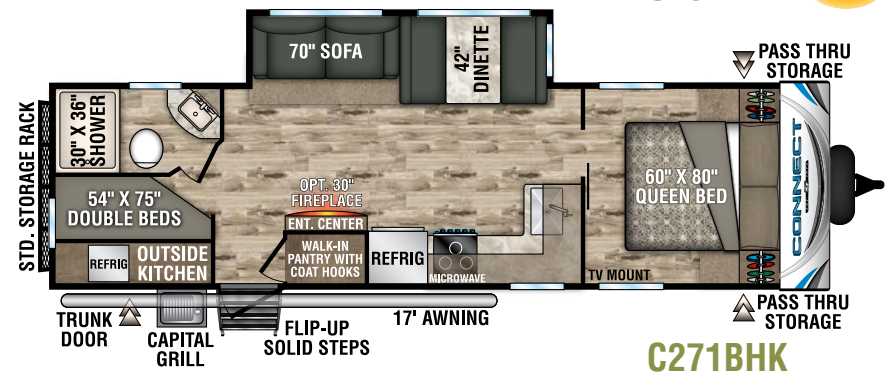
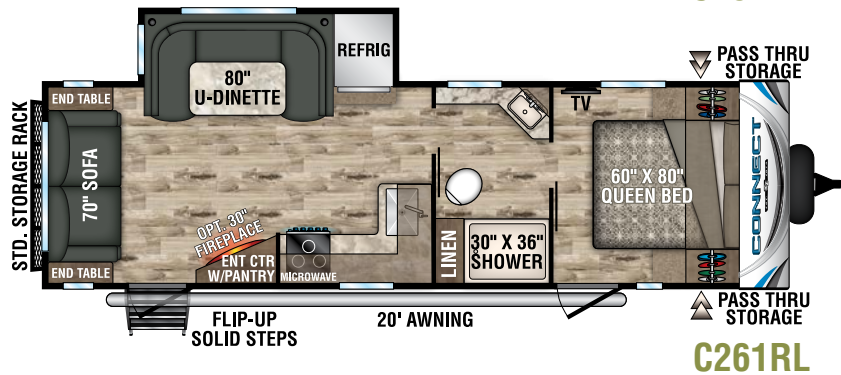
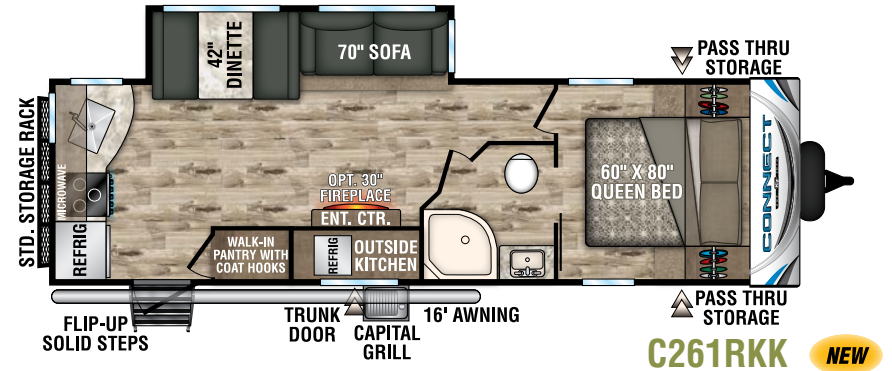
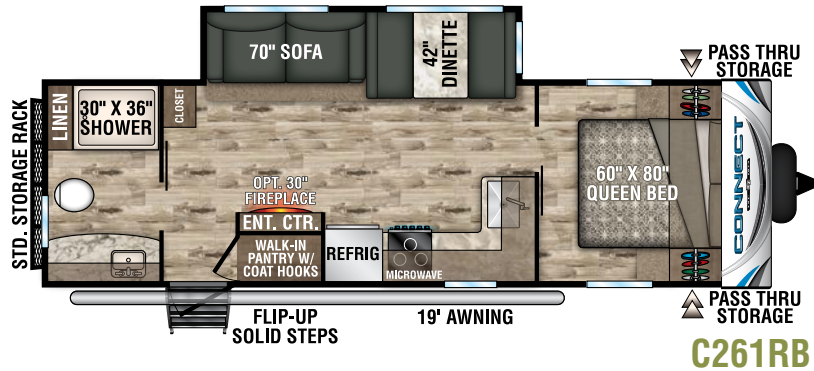
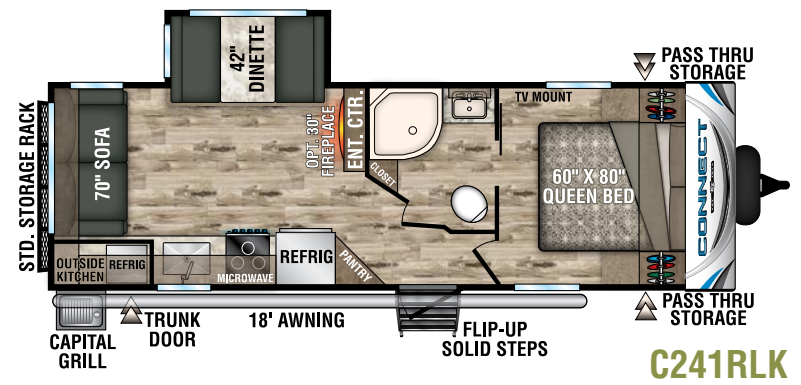
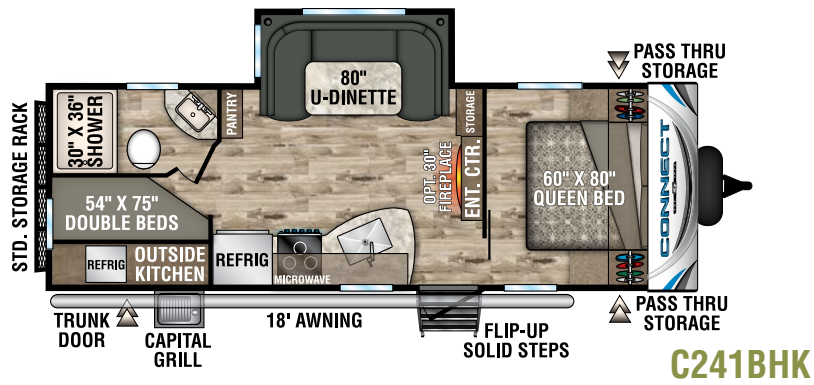
**GENEROUS FULL-LENGTH CLOSET**  
offers hanger and shelf space. (C303RL shown)



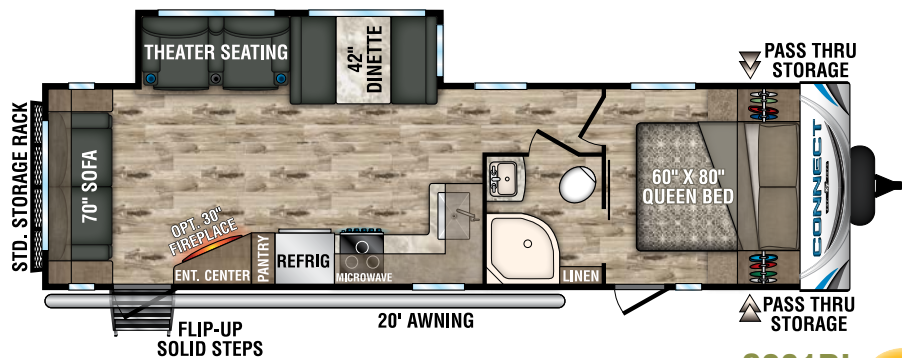
**FULL BATH**  
features a roomy  
shower with  
skylight, medicine  
cabinet, and vanity  
with counter  
space. Most  
floorplans include  
a linen closet.  
(C303RL shown)



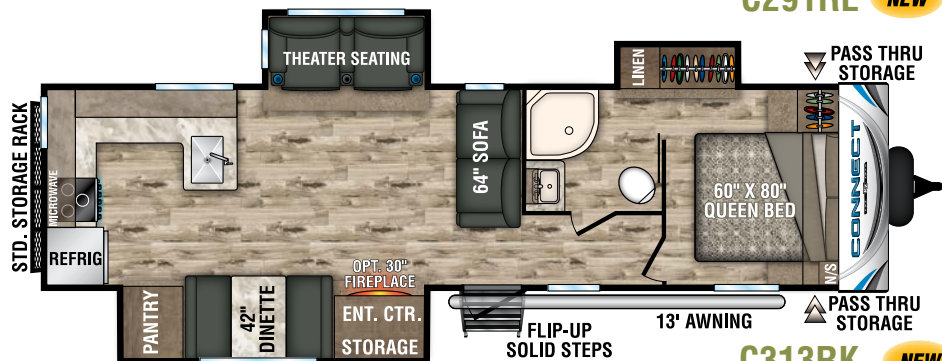




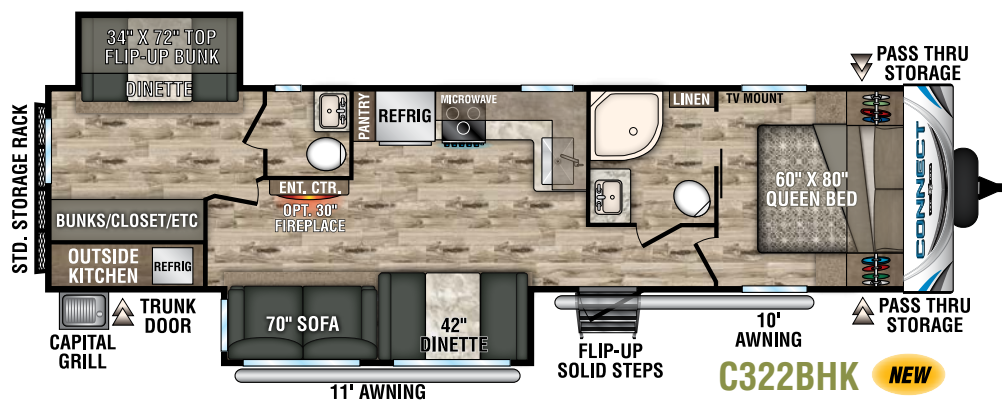




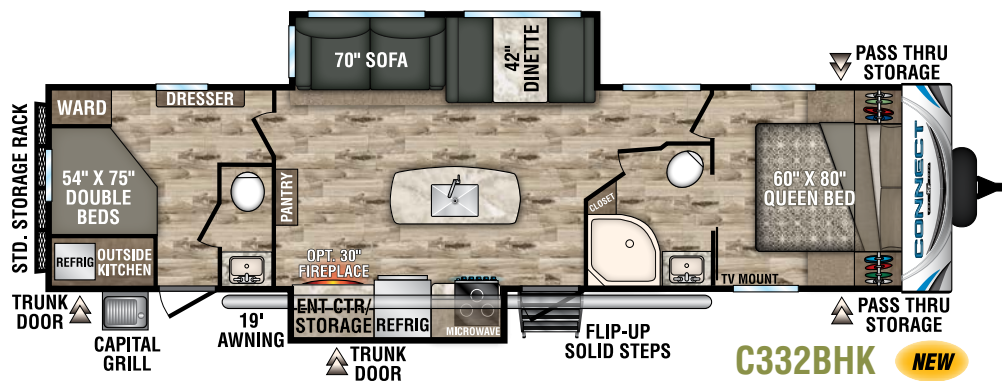
**C291RL** NEW



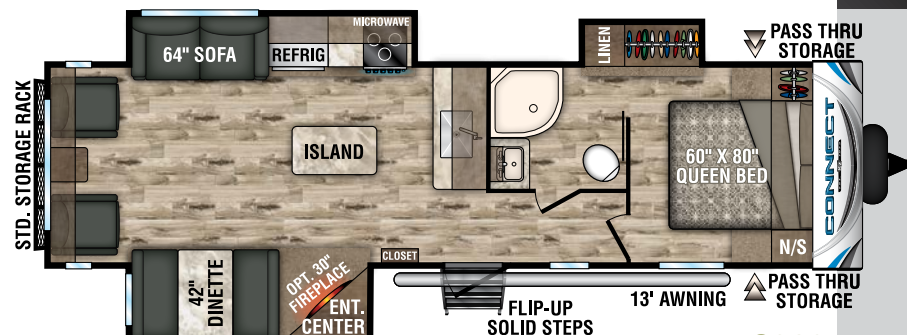
**C313RK** NEW



**C322BHK** NEW



**C332BHK** NEW



**C303RL**

## 71-INCH FLIP-DOWN REAR STORAGE RACK

holds additional luggage/tubs, or two adult-sized bicycles, and folds up completely when not in use. Includes spare tire and mount.





**STANDARDS**

- 3/8" Fully Walk-On Roof Decking
- 1-Piece Seamless Roof w/ SuperFlex® Roofing Material
- UVA & UVB Resistant Gelcoat Lamilux® Exterior Fiberglass
- Protective Front Diamond Plate
- Extra-Large Baggage Doors w/ Magnetic Catches
- KZ Easy-Catch Baggage Door Systems
- LED Exterior Lighting
- Outside Entertainment Prep (EXT 110V & cable outlets)
- Outside Shower
- (4) Stabilizer Jacks
- (2) 20# LP Bottles w/Bottle Cover
- Satellite & Cable Hookups
- 30 AMP Service
- 13,500 BTU A/C
- Water Heater Bypass
- Black Flush Tank
- Digital TV Antenna w/Booster
- 3-Burner Range w/Oven
- High-Rise Faucet
- Rich Woodbridge Maple Cabinetry
- Hand-Crafted Mortise & Tenon Glazed Cabinet Doors
- Roller Ball Bearing Drawer Glides

- Linoleum Throughout
- LED Interior Lighting
- Nightshades
- Shower Surround
- Skylight over Tub
- Roof Vent in Bath
- High Thread Count Quilted Reversible Queen Bedspread
- Gas Struts on Bed Base

**OPTIONS**

- Roof Ladder
- Pillowtop Mattress
- Tri-Fold Hide-a-Bed Sofa (N/A C241BHK)
- 50 AMP Service for 2nd A/C
- 15,000 A/C IPO 13,500 BTU
- 2nd A/C – 13.5K
- F/S Dinette Table & 4 Chairs IPO Dinette (N/A C241BHK)
- Theater Seating w/Heat & Massage Features IPO Jackknife (N/A C241BHK, C303RL)
- Bumper Mount Grill
- MaxAir Vent Fan (bathroom only)
- Bedroom LED TV w/Inside/Outside TV Bracket
- Front & Rear Electric Stabilizer Jacks

- Trundle Bed IPO Dinette in Bunk Slide (C322BHK)
- 10 CU FT 12V Refrigerator IPO 8 CU FT Stainless Steel Gas/Electric Refrigerator
- Wireless Backup Camera System – Observation
- Radiant Technology Package (foil in floor, roof, front & rear)
- 30" Fireplace

**PLATINUM PACKAGE**

- Fiberglass Front Cap
- Pillowtop Mattress
- Headboard

**KZ ADVANTAGE PACKAGE (MANDATORY OPTION)****EXTERIOR**

- Color Infused Titanium Exterior Fiberglass
- Flip-Up Entry Step (main entry)
- Friction Hinged Entry Door
- Power Front Jack
- Key-Alike Program for Baggage & Entry Doors
- Magnetic Catches for Baggage Doors
- Screenshot on Entry Door
- Large Folding Grab Handle

- Exterior Speakers
- Spare Tire
- ToyLok®
- Solar Prep
- Backup Camera Prep
- Flip Down 71" Storage Rack
- Equa-Flex® Suspension
- Nitrogen Filled Tires
- Battery Disconnect Switch
- Climate Package (heated, insulated & enclosed underbelly)

**INTERIOR**

- Jackknife w/Middle Console & Bolster Arms
- Drop-In Cooktop w/Glass Cover & Oven
- Bed Storage System
- 12V Dual USB Port in LR
- Seamless Countertops w/Deep Undermount Stainless Steel Kitchen Sink
- Sink Covers
- Plywood Bed Base w/Gas Struts
- 12V Dual USB in Bunk Area
- (2) 6.5" Interior Speakers
- LED TV
- Multimedia Stereo w/Bluetooth, DVD & NFC Wireless Connectivity

- (2) LED Motion Sensor Lights
- 60"x 80" Queen Mattress
- 36" Storage Bins at Dinette
- Kitchen Skylight
- Bright White LED Light Strip above Slideout Room (main LR only)
- Flush Floor Slideouts
- Wider Pocket/Passage Interior Doors

**KZ CONVENIENCE PACKAGE (MANDATORY OPTION)****EXTERIOR**

- Aluminum Wheels
- Power Awning w/LED Light Strip
- Omnidirectional HDTV Antenna
- LED Lights in Exterior Speakers

**INTERIOR**

- Residential Grade Linoleum
- 8 CU FT Gas/Electric Refrigerator w/ Temperature Controls
- Stainless Steel Microwave
- Stainless Steel Residential Kitchen Faucet w/Pulldown Sprayer
- Interior Control Switches on Overhead End Cabinet
- Accent Trim on Corners/Entry Doors
- Porcelain Toilet w/Foot Flush

Lightweight Travel Trailers	C241BHK	C241RLK	C261RB	C261RKK	C261RL	C271BHK	C281BH	C281BHK	C291RL	C303RL	C313RK	C322BHK	C332BHK
UVW (Unloaded Vehicle Weight) *	5,120	5,670	6,050	6,080	6,050	6,240	6,170	6,100	6,595	7,290	TBD	7,700	7,852
Dry Hitch Weight*	690	620	720	590	700	780	730	760	705	780	TBD	790	1,050
Dry Axle Weight*	4,430	5,050	5,330	5,470	5,350	5,460	5,440	5,340	5,890	6,510	TBD	6,910	TBD
NCC (Net Carrying Capacity)	1,680	1,130	950	920	950	960	1,830	1,100	1,705	1,010	TBD	1,100	948
GVWR	6,800	6,800	7,000	7,000	7,000	7,200	8,000	7,200	8,300	8,300	TBD	8,800	8,800
Interior Height	78"	78"	78"	78"	78"	78"	78"	78"	78"	78"	78"	78"	78"
Exterior Height w/ A/C	10' 7"	10' 8"	10' 8"	10' 8"	10' 8"	10' 8"	10' 8"	10' 9"	10' 8"	10' 8"	10' 8"	10' 8"	10' 8"
Exterior Width	96"	96"	96"	96"	96"	96"	96"	96"	96"	96"	96"	96"	96"
Exterior Length	29' 1"	29' 8"	30' 9"	31'	31' 2"	32' 10"	33' 11"	32' 7"	33' 11"	35'	36' 2"	37' 9"	37' 9"
Refrigerator (cu. feet)	8	8	8	8	8	8	8	8	8	8	8	8	8
Water Heater Cap. (gal. G/E w/DSI)	6	6	6	6	6	6	6	6	6	6	6	6	6
Fresh Water Cap. (gal.)	40	40	40	40	40	40	40	40	40	40	40	40	40
Waste Water Cap. (gal.)	32	32	32	32	32	32	32	32	32	32	32	64	64
Gray Water Cap. (gal.)	32	32	64	64	32	64	32	32	32	32	64	64	64
LP Gas Cap. (lbs.)	40	40	40	40	40	40	40	40	40	40	40	40	40
Furnace BTUs (1,000s)	30	30	30	30	30	30	30	30	30	30	30	30	30
Tire Size	14"	14"	14"	14"	14"	14"	15"	14"	15"	15"	15"	15"	15"
Awning	18'	18'	19'	16'	20'	17'	18'	15'	20'	13'	13'	10'/11'	19'

\*This weight reflects the rolling average unit weight for each model. Your trailer weight will vary according to optional equipment.

DÉCOR





# CONNECT<sup>SE</sup> & CONNECT

## EXTERIOR FEATURES



**FLIP-UP ENTRY STEP** provides solid footing, and folds neatly away. The friction-hinged entry door with grab-bar and screen-shot feature eliminates slamming and makes for safe, easy passage. *(Connect only)*



**5/8" TONGUE & GROOVE PLYWOOD**



**ALUMINUM WHEELS**  
and nitrogen-filled radial tires are standard.  
*(Connect only)*



**POWER AWNING WITH LED**  
light strip provides relaxing  
nighttime ambience.



**LIGHTED TONGUE JACK**  
assists setup and teardown.



**TOYLOK**  
secures valuables with  
external cable and padlock  
system. *(Connect only)*



**OUTDOOR KITCHEN**  
(floorplan specific) features cooktop,  
refrigerator, and storage shelf.



**LED MOTION SENSOR LIGHTS** at  
entry door, pantry and storage  
pass-through. *(Connect only)*



**12V DUAL USB PORTS** in  
living room and bunk area.



**BACKUP CAMERA PREP**



**CABLE & SATELLITE**  
prewired hookups



### PLATINUM PACKAGE

includes fiberglass front cap, pillowtop mattress, and stylish padded headboard.  
*(Connect only)*



### CLIMATE PACKAGE

Added insulation so you can extend the camping season, with a fully enclosed, insulated and heated underbelly to protect tanks and pipes (R-9 sidewalls, R-20 roof, and R-24 floor).



# DOWNLOAD YOUR FREE

**KZ RV APP TODAY!**

Owning and operating an RV has never been easier. Everything you need is now in the palm of your hand.



Track RV Maintenance



Keep RV Service Close



Set Custom Notifications



Reference Checklists for RV Trips



**DOWNLOAD  
NOW!**



VISIT [KZ-APP.COM](http://KZ-APP.COM) TO LEARN MORE.



## True 2-Year Limited Warranty!

KZ's 24-month hitch-to-bumper limited warranty umbrella is the best two-year warranty in the business, covering more than 1,500 operation codes for a full two years and approved for full-time living, thus protecting your investment while you enjoy your RV.

You've found the RV that fits your needs... now you want total confidence in your selection. Because KZ has total confidence in the products we build, we can pass that along to the original purchaser, starting from the date of delivery. Rest easy... you've partnered with the right manufacturer!

## KZ Recreational Vehicles... *A History in Progress*

Sam King and Daryl Zook built a truck camper in 1972, with founding principles of quality, fairness, courtesy and integrity. Nearly 50 years later, our 625 employees build your recreational vehicles, on our 100+ acre campus in Shipshewana, IN.

When you communicate with KZ, you'll always be speaking with someone who takes you seriously and treats you with respect. Thank you for considering KZ, and welcome to our world-wide family of satisfied customers!



Dealer:



985 N 900 W • Shipshewana, IN 46565  
E-mail [kz@kz-rv.com](mailto:kz@kz-rv.com) • [www.kz-rv.com](http://www.kz-rv.com)

**RVIA**

Due to continual research and advances, manufacturer reserves the right to change specifications, design, price and equipment without notice, and assumes no responsibility for any error in this literature. Some items shown are not included as standard or optional equipment. ©2019KZ | 01/08/19 | 60M