

# QUANTUM™

NO MATTER HOW YOU CHOOSE TO SPEND YOUR TIME  
OR YOUR MONEY, THE QUANTUM™ FITS YOUR NEEDS.





# QUANTUM™

Allow Quantum™ motorhomes to take your breath away. When you see the beautiful, bold graphics and abundance of amenities, you know you've found the perfect reason to take yourself out on the road.



# EXTERIOR OPTIONS



HOT STREAK 



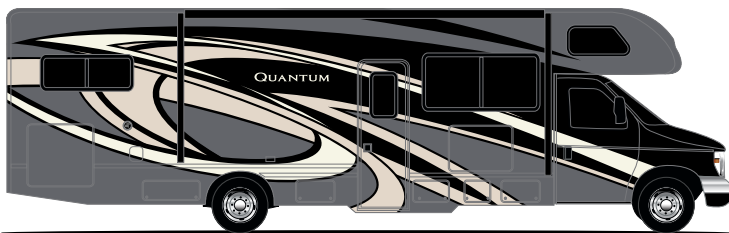
LET IT RIDE 



JOKERS WILD PARTIAL PAINT  
(STANDARD LF31, PD31 & W31)



DOUBLE DOWN PARTIAL PAINT  
(STANDARD LF31, PD31 & W31)



BLACK ONYX FULL-BODY PAINT  
(KW29, LF31, PD31 & WS31)



TOPAZ BLUE FULL-BODY PAINT  
(KW29, LF31, PD31 & WS31)

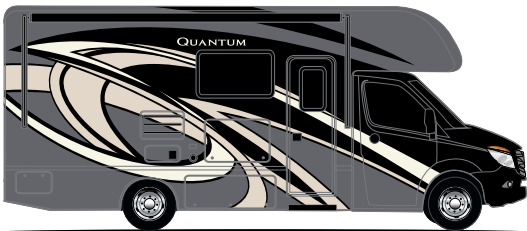
# S P R I N T E R S



HOT STREAK 



LET IT RIDE 



BLACK ONYX FULL-BODY PAINT



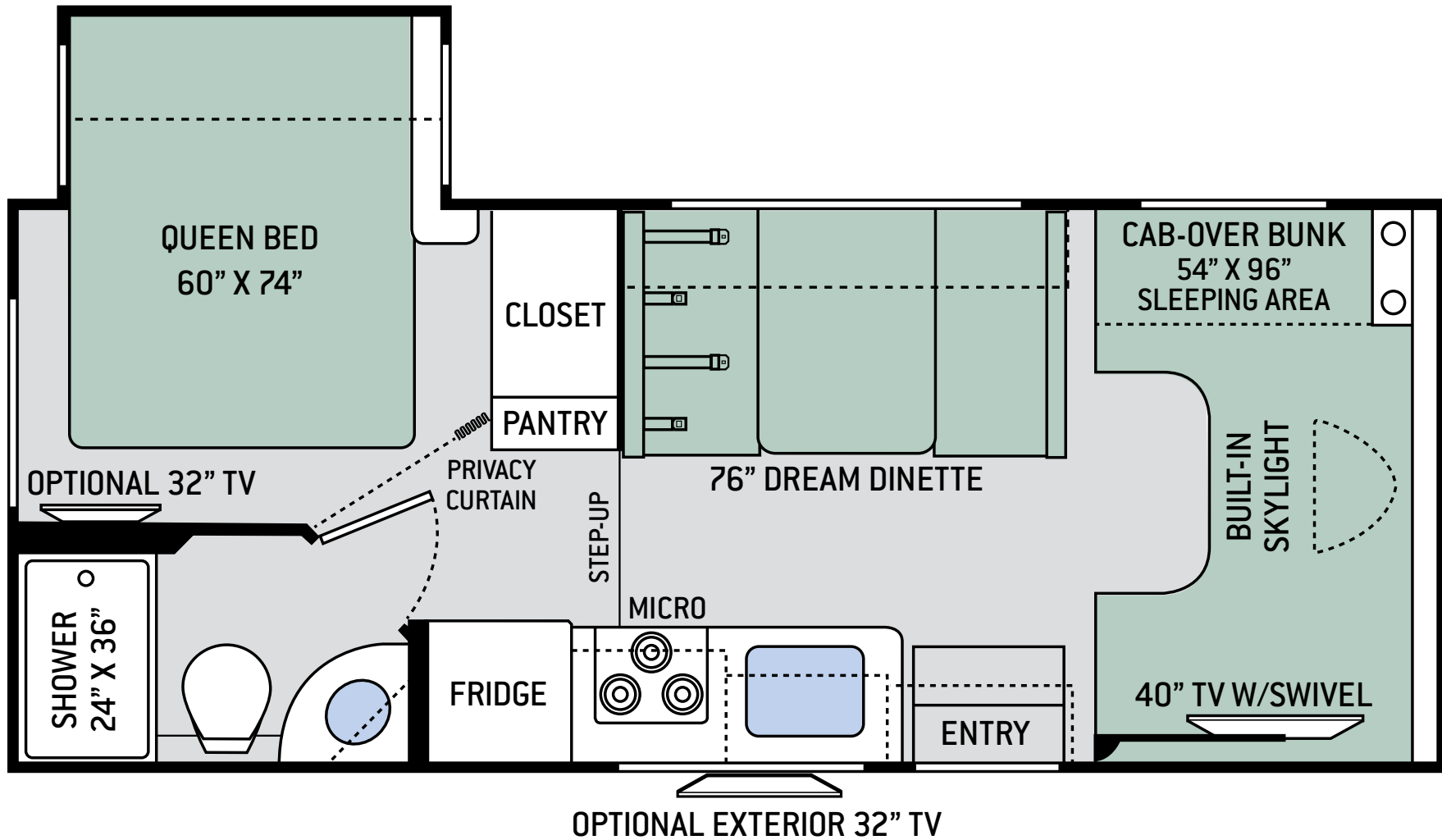
TOPAZ BLUE FULL-BODY PAINT







# FLOOR PLANS



## GR22

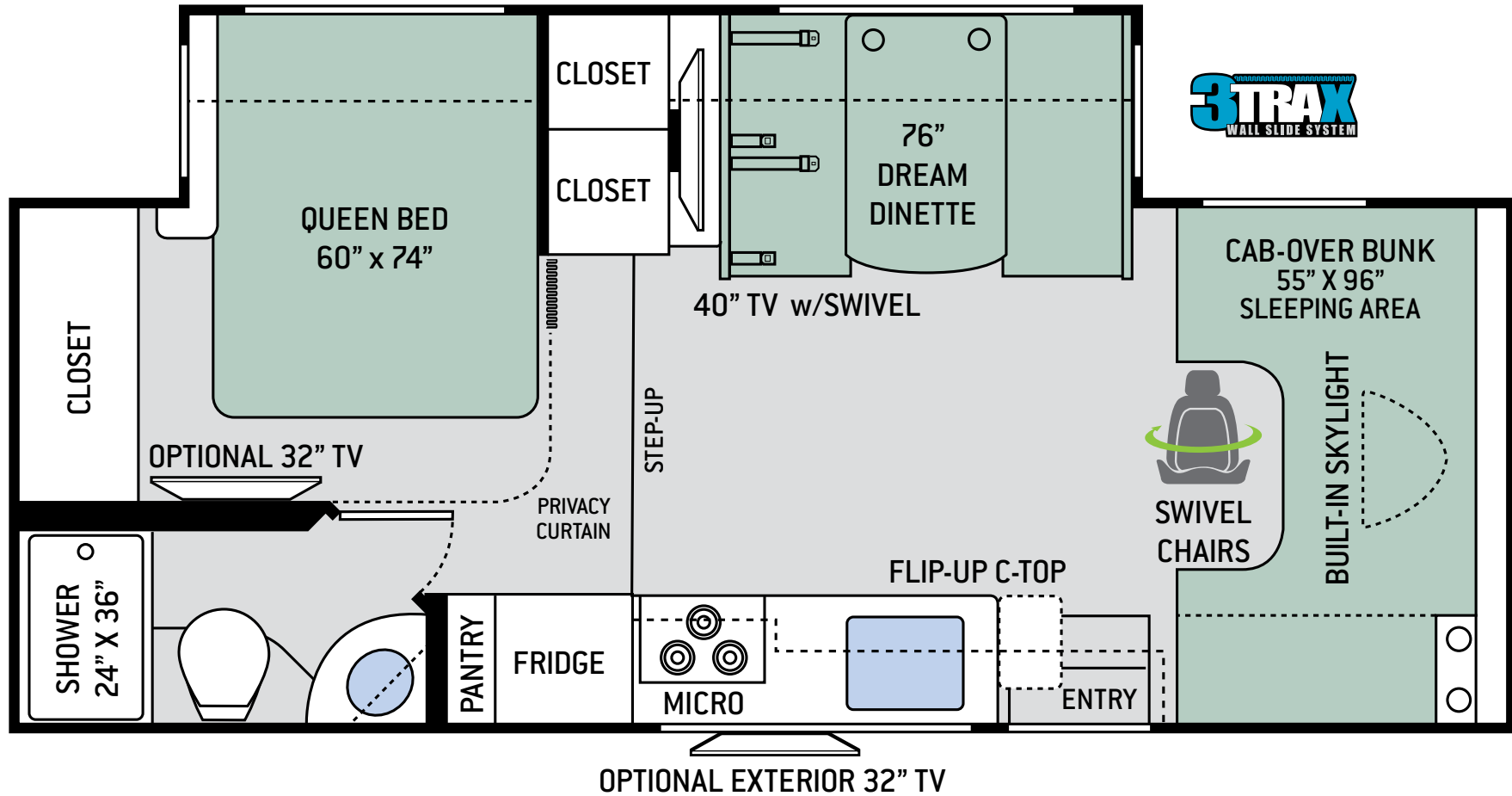


# S P E C I F I C A T I O N S

## GR22

<b>CHASSIS</b>	Ford / Chevy
<b>GROSS VEHICLE (GVWR)</b>	12,500 / 12,300
<b>GROSS COMBINED (GCWR)</b>	18,500 / 16,000
<b>WHEEL BASE</b>	158" / 159"
<b>EXTERIOR LENGTH (W/O LADDER)</b>	24' / 24'-6"
<b>EXTERIOR HEIGHT (W/AC)</b>	11"
<b>EXTERIOR WIDTH (W/O MIRRORS)</b>	99"
<b>INTERIOR HEIGHT (LIVING AREA)</b>	84"
<b>AWNING SIZE</b>	15'
<b>FUEL (GAL)</b>	55 / 57
<b>LPG (LBS)</b>	40.9
<b>FRESH/WASTE/GRAY WATER (GAL)</b>	40 / 29 / 25
<b>WATER HEATER (GAL)</b>	Tankless
<b>FURNACE (BTUS)</b>	19,000
<b>EXTERIOR STORAGE CAPACITY (CU. FT.)</b>	30.9
<b>HITCH WEIGHT RATING (LBS)</b>	8,000

# FLOOR PLANS



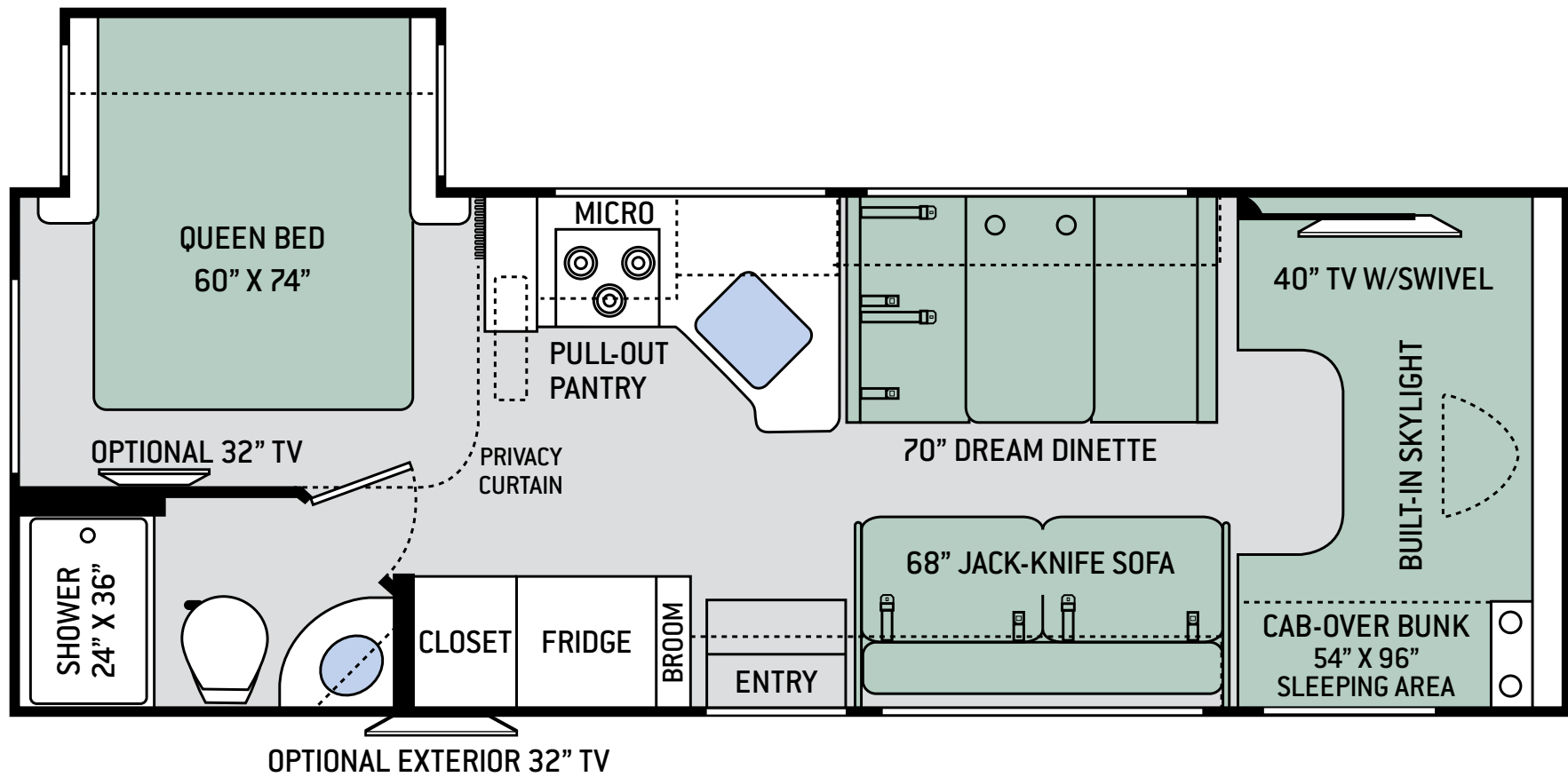
## RC25

# S P E C I F I C A T I O N S

RC25

<b>CHASSIS</b>	Ford
<b>GROSS VEHICLE (GVWR)</b>	14,500
<b>GROSS COMBINED (GCWR)</b>	22,000
<b>WHEEL BASE</b>	178"
<b>EXTERIOR LENGTH (W/O LADDER)</b>	26'-3"
<b>EXTERIOR HEIGHT (W/AC)</b>	11'-2"
<b>EXTERIOR WIDTH (W/O MIRRORS)</b>	99"
<b>INTERIOR HEIGHT (LIVING AREA)</b>	84"
<b>AWNING SIZE</b>	16'
<b>FUEL (GAL)</b>	55
<b>LPG (LBS)</b>	40.9
<b>FRESH/WASTE/GRAY WATER (GAL)</b>	40 / 34 / 37
<b>WATER HEATER (GAL)</b>	Tankless
<b>FURNACE (BTUS)</b>	30,000
<b>EXTERIOR STORAGE CAPACITY (CU. FT.)</b>	45.1
<b>HITCH WEIGHT RATING (LBS)</b>	8,000

# FLOOR PLANS



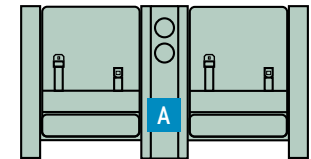
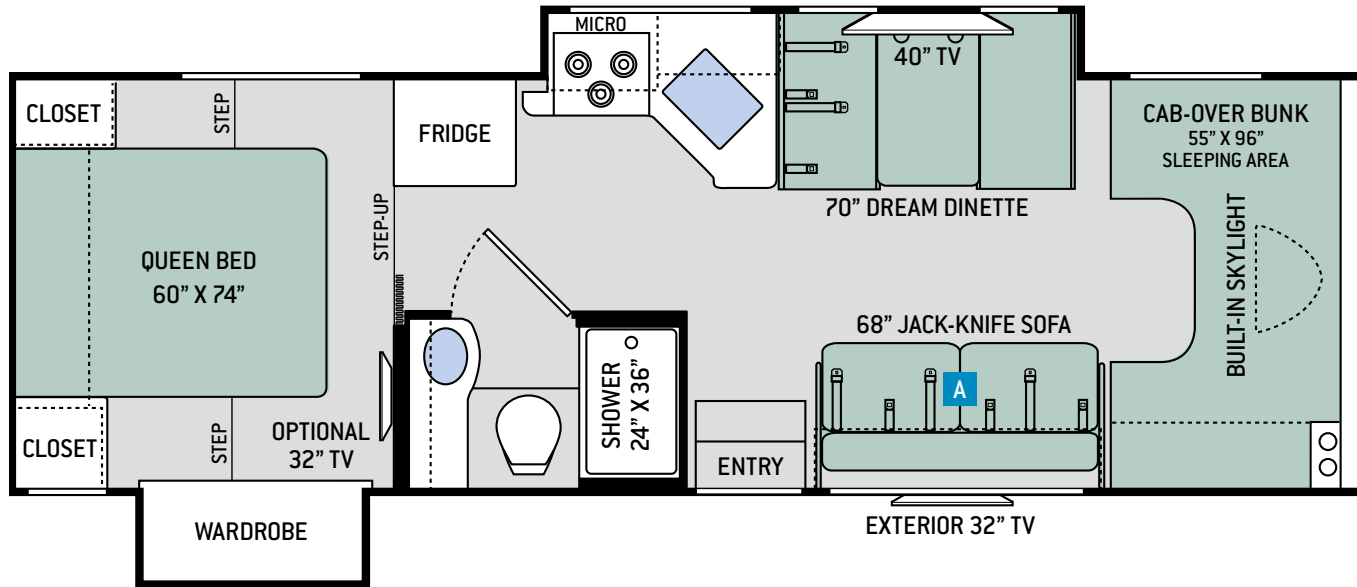
## RS26

# S P E C I F I C A T I O N S

## RS26

<b>CHASSIS</b>	Ford / Chevy
<b>GROSS VEHICLE (GVWR)</b>	12,500 / 14,200
<b>GROSS COMBINED (GCWR)</b>	18,500 / 20,000
<b>WHEEL BASE</b>	183" / 184"
<b>EXTERIOR LENGTH (W/O LADDER)</b>	27'-6" / 28'
<b>EXTERIOR HEIGHT (W/AC)</b>	11'-2"
<b>EXTERIOR WIDTH (W/O MIRRORS)</b>	99"
<b>INTERIOR HEIGHT (LIVING AREA)</b>	84"
<b>AWNING SIZE</b>	18'
<b>FUEL (GAL)</b>	55 / 57
<b>LPG (LBS)</b>	40.9
<b>FRESH/WASTE/GRAY WATER (GAL)</b>	40 / 29 / 25
<b>WATER HEATER (GAL)</b>	Tankless
<b>FURNACE (BTUS)</b>	30,000
<b>EXTERIOR STORAGE CAPACITY (CU. FT.)</b>	40.0
<b>HITCH WEIGHT RATING (LBS)</b>	8,000

# FLOOR PLANS



OPTIONAL THEATER SEATING

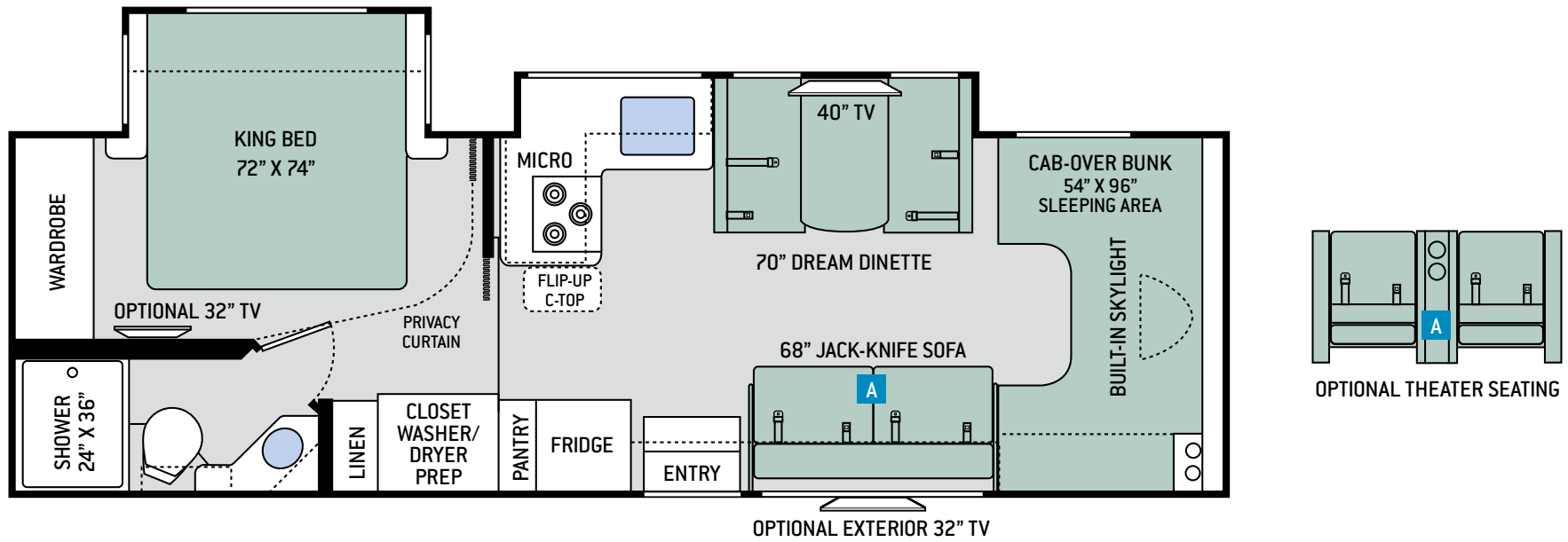
## RW28

# S P E C I F I C A T I O N S

RW28

<b>CHASSIS</b>	Ford
<b>GROSS VEHICLE (GVWR)</b>	14,500
<b>GROSS COMBINED (GCWR)</b>	22,000
<b>WHEEL BASE</b>	212"
<b>EXTERIOR LENGTH (W/O LADDER)</b>	30'-2"
<b>EXTERIOR HEIGHT (W/AC)</b>	11'-2"
<b>EXTERIOR WIDTH (W/O MIRRORS)</b>	99"
<b>INTERIOR HEIGHT (LIVING AREA)</b>	84"
<b>AWNING SIZE</b>	14'
<b>FUEL (GAL)</b>	55
<b>LPG (LBS)</b>	40.9
<b>FRESH/WASTE/GRAY WATER (GAL)</b>	40 / 26 / 32
<b>WATER HEATER (GAL)</b>	Tankless
<b>FURNACE (BTUS)</b>	30,000
<b>EXTERIOR STORAGE CAPACITY (CU. FT.)</b>	99.9
<b>HITCH WEIGHT RATING (LBS)</b>	8,000

# FLOOR PLANS



## KW29

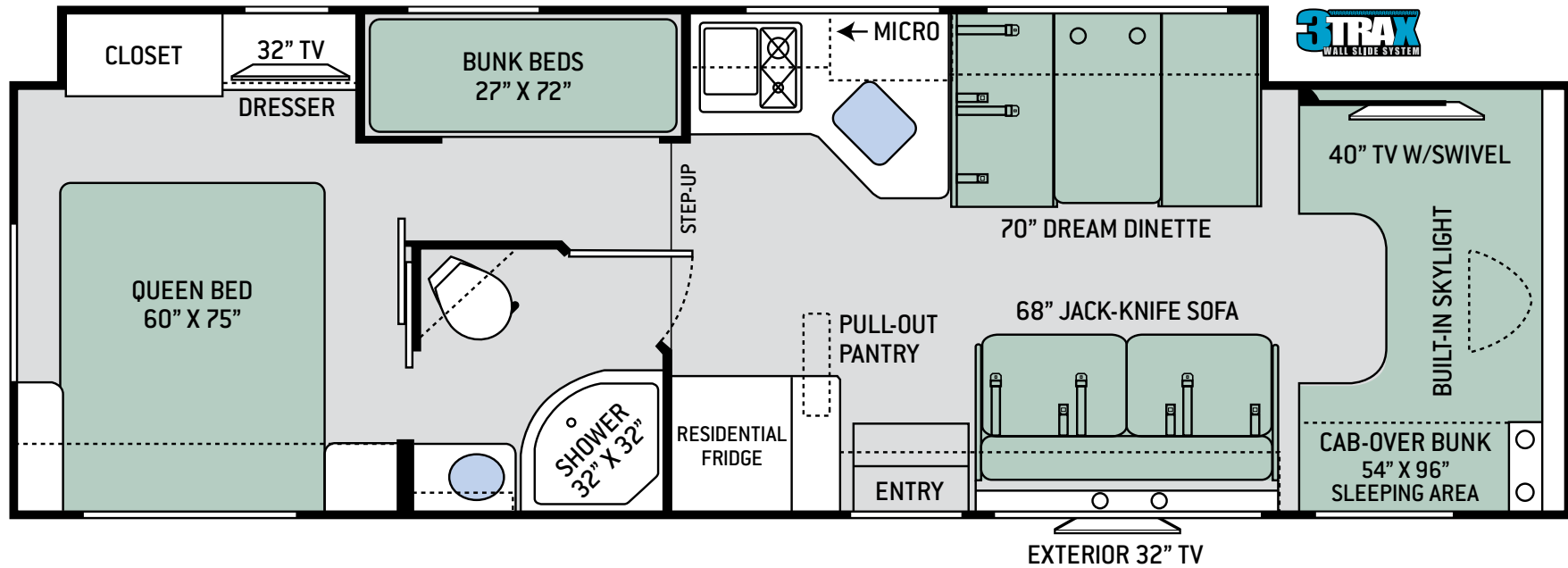


# S P E C I F I C A T I O N S

KW29

<b>CHASSIS</b>	Ford
<b>GROSS VEHICLE (GVWR)</b>	14,500
<b>GROSS COMBINED (GCWR)</b>	22,000
<b>WHEEL BASE</b>	212"
<b>EXTERIOR LENGTH (W/O LADDER)</b>	30'-11"
<b>EXTERIOR HEIGHT (W/AC)</b>	11'-2"
<b>EXTERIOR WIDTH (W/O MIRRORS)</b>	99"
<b>INTERIOR HEIGHT (LIVING AREA)</b>	84"
<b>AWNING SIZE</b>	18'
<b>FUEL (GAL)</b>	55
<b>LPG (LBS)</b>	40.9
<b>FRESH/WASTE/GRAY WATER (GAL)</b>	40 / 34.5 / 37
<b>WATER HEATER (GAL)</b>	Tankless
<b>FURNACE (BTUS)</b>	30,000
<b>EXTERIOR STORAGE CAPACITY (CU. FT.)</b>	50.4
<b>HITCH WEIGHT RATING (LBS)</b>	8,000

# FLOOR PLANS



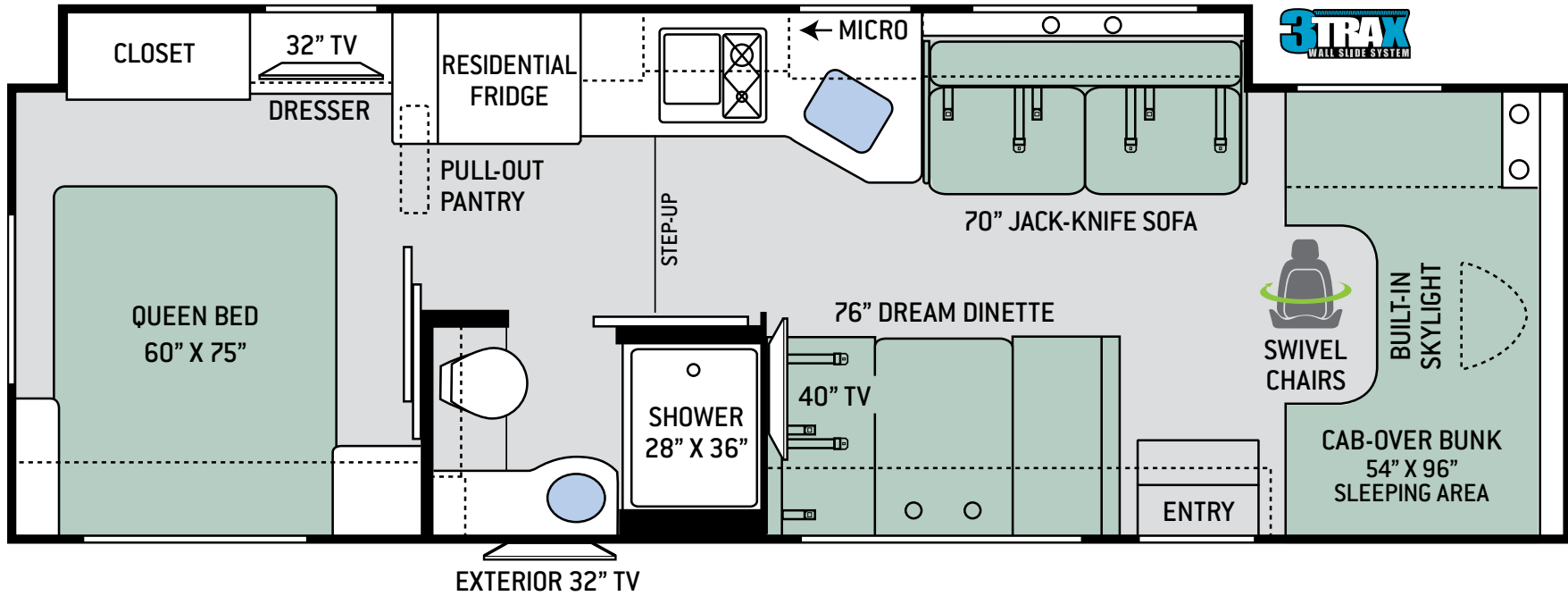
LF31

# S P E C I F I C A T I O N S

LF31

<b>CHASSIS</b>	Ford
<b>GROSS VEHICLE (GVWR)</b>	14,500
<b>GROSS COMBINED (GCWR)</b>	22,000
<b>WHEEL BASE</b>	223"
<b>EXTERIOR LENGTH (W/O LADDER)</b>	32'-7"
<b>EXTERIOR HEIGHT (W/AC)</b>	11'-2"
<b>EXTERIOR WIDTH (W/O MIRRORS)</b>	99"
<b>INTERIOR HEIGHT (LIVING AREA)</b>	84"
<b>AWNING SIZE</b>	16'
<b>FUEL (GAL)</b>	55
<b>LPG (LBS)</b>	40.9
<b>FRESH/WASTE/GRAY WATER (GAL)</b>	40 / 28 / 28
<b>WATER HEATER (GAL)</b>	Tankless
<b>FURNACE (BTUS)</b>	30,000
<b>EXTERIOR STORAGE CAPACITY (CU. FT.)</b>	55.7
<b>HITCH WEIGHT RATING (LBS)</b>	8,000

# FLOOR PLANS



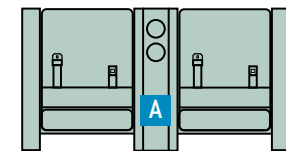
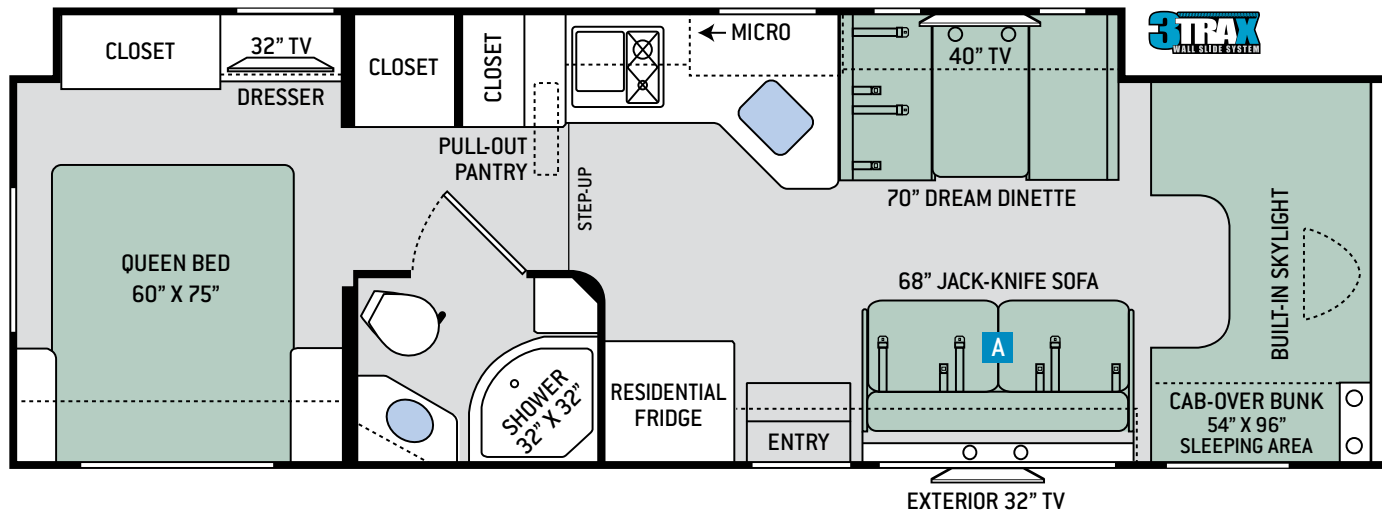
PD31

# S P E C I F I C A T I O N S

PD31

<b>CHASSIS</b>	Ford
<b>GROSS VEHICLE (GVWR)</b>	14,500
<b>GROSS COMBINED (GCWR)</b>	22,000
<b>WHEEL BASE</b>	212"
<b>EXTERIOR LENGTH (W/O LADDER)</b>	31'-3"
<b>EXTERIOR HEIGHT (W/AC)</b>	11'-2"
<b>EXTERIOR WIDTH (W/O MIRRORS)</b>	99"
<b>INTERIOR HEIGHT (LIVING AREA)</b>	84"
<b>AWNING SIZE</b>	16'
<b>FUEL (GAL)</b>	55
<b>LPG (LBS)</b>	40.9
<b>FRESH/WASTE/GRAY WATER (GAL)</b>	40 / 28 / 28
<b>WATER HEATER (GAL)</b>	Tankless
<b>FURNACE (BTUS)</b>	30,000
<b>EXTERIOR STORAGE CAPACITY (CU. FT.)</b>	52.9
<b>HITCH WEIGHT RATING (LBS)</b>	8,000

# FLOOR PLANS



OPTIONAL THEATER SEATING

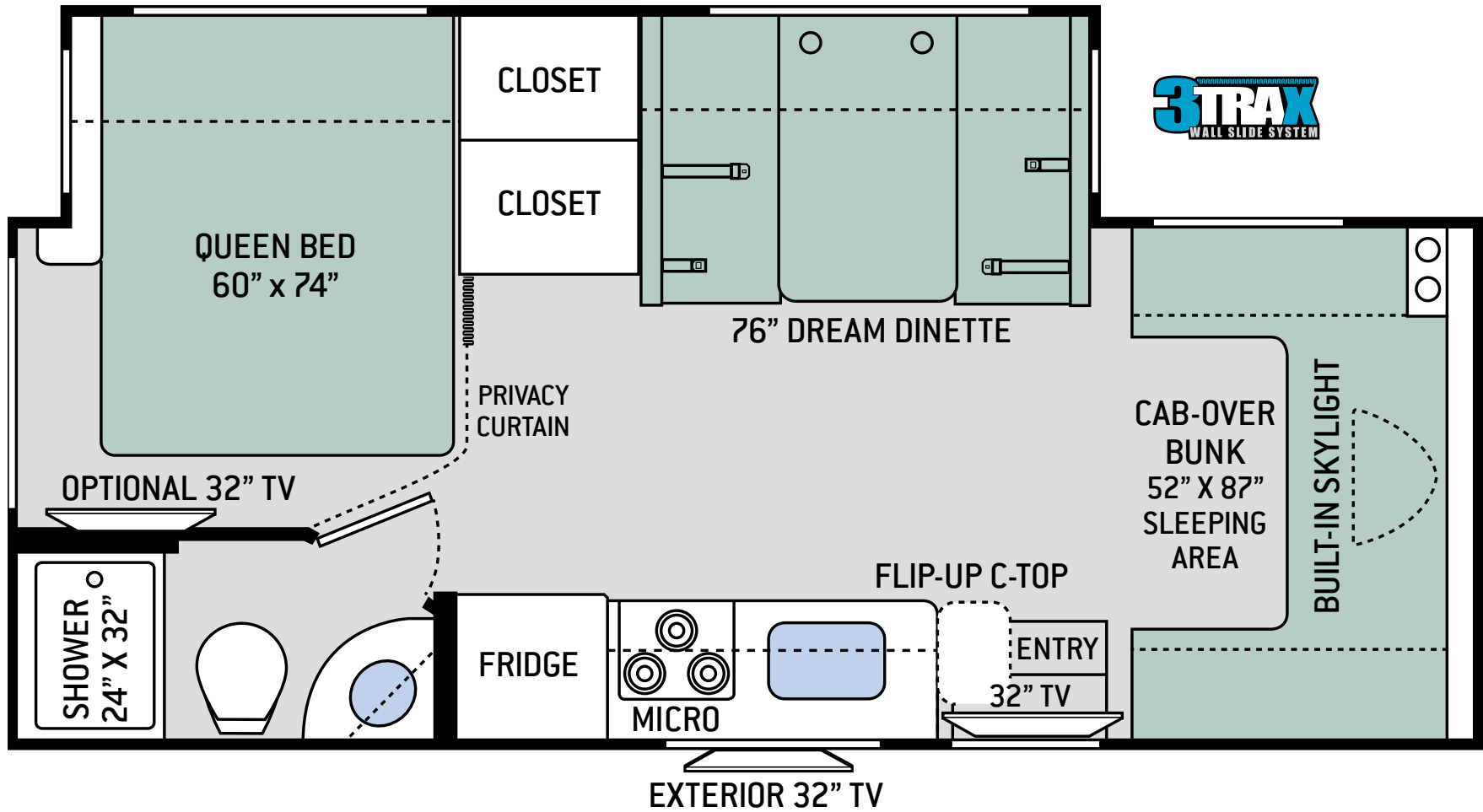
## WS31

# S P E C I F I C A T I O N S

WS31

<b>CHASSIS</b>	Ford
<b>GROSS VEHICLE (GVWR)</b>	14,500
<b>GROSS COMBINED (GCWR)</b>	22,000
<b>WHEEL BASE</b>	223"
<b>EXTERIOR LENGTH (W/O LADDER)</b>	32'-2"
<b>EXTERIOR HEIGHT (W/AC)</b>	11'-2"
<b>EXTERIOR WIDTH (W/O MIRRORS)</b>	99"
<b>INTERIOR HEIGHT (LIVING AREA)</b>	84"
<b>AWNING SIZE</b>	16'
<b>FUEL (GAL)</b>	55
<b>LPG (LBS)</b>	40.9
<b>FRESH/WASTE/GRAY WATER (GAL)</b>	40 / 28 / 28
<b>WATER HEATER (GAL)</b>	Tankless
<b>FURNACE (BTUS)</b>	30,000
<b>EXTERIOR STORAGE CAPACITY (CU. FT.)</b>	55.7
<b>HITCH WEIGHT RATING (LBS)</b>	8,000

# FLOOR PLANS



KM24 

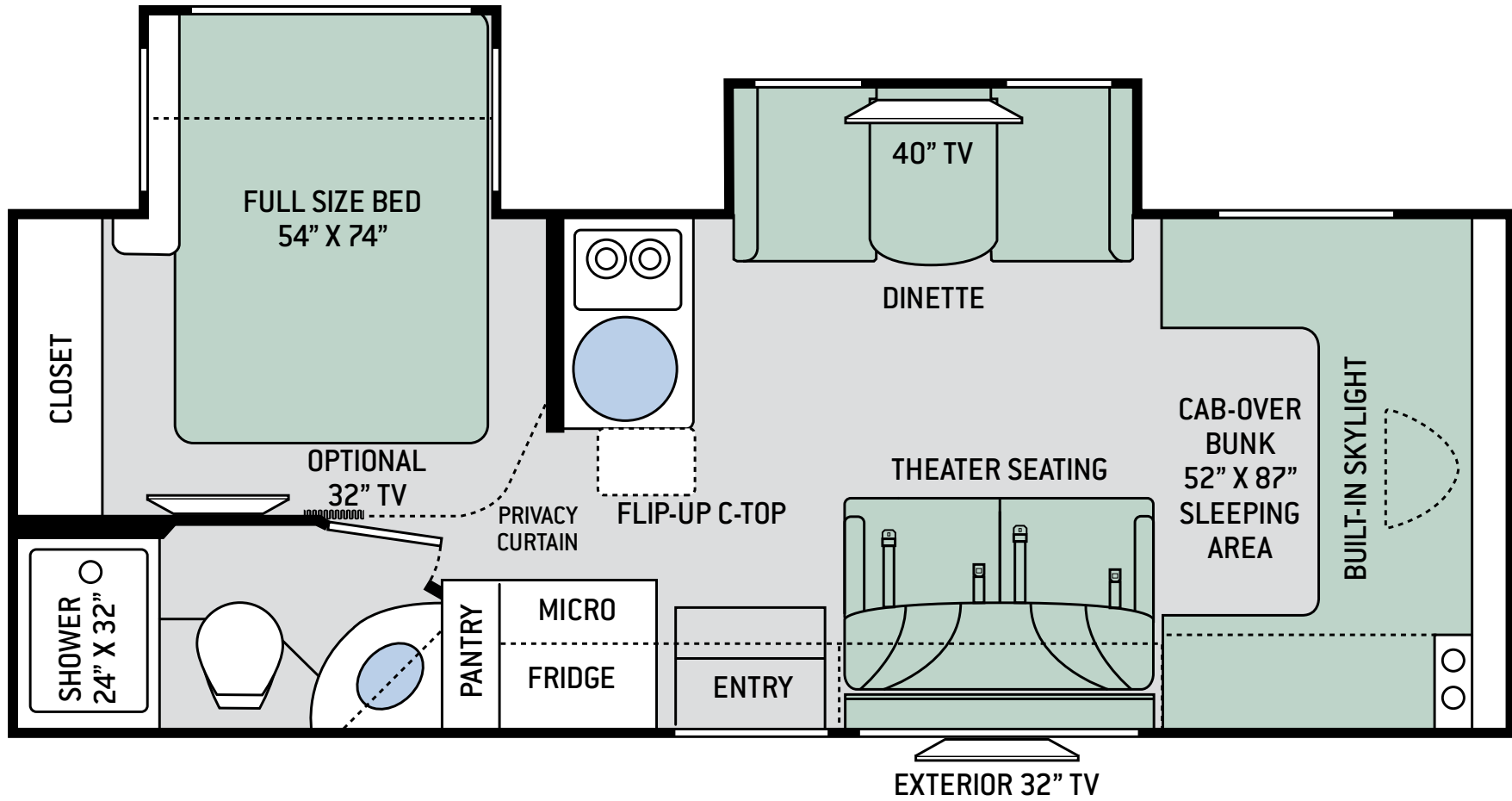


# S P E C I F I C A T I O N S

## KM24

<b>CHASSIS</b>	Mercedes-Benz
<b>GROSS VEHICLE (GVWR)</b>	11,030
<b>GROSS COMBINED (GCWR)</b>	15,250
<b>WHEEL BASE</b>	170.3"
<b>EXTERIOR LENGTH (W/O LADDER)</b>	24'-8"
<b>EXTERIOR HEIGHT (W/AC)</b>	12'-1"
<b>EXTERIOR WIDTH (W/O MIRRORS)</b>	90"
<b>INTERIOR HEIGHT (LIVING AREA)</b>	84"
<b>AWNING SIZE</b>	15'
<b>FUEL (GAL)</b>	26.4
<b>LPG (LBS)</b>	68.2
<b>FRESH/WASTE/GRAY WATER (GAL)</b>	30 / 24 / 38
<b>WATER HEATER (GAL)</b>	Tankless
<b>FURNACE (BTUS)</b>	30,000
<b>EXTERIOR STORAGE CAPACITY (CU. FT.)</b>	48.5
<b>HITCH WEIGHT RATING (LBS)</b>	5,000

# FLOOR PLANS



CR24 

# S P E C I F I C A T I O N S

## CR24

<b>CHASSIS</b>	Mercedes-Benz
<b>GROSS VEHICLE (GVWR)</b>	11,030
<b>GROSS COMBINED (GCWR)</b>	15,250
<b>WHEEL BASE</b>	170.3"
<b>EXTERIOR LENGTH (W/O LADDER)</b>	25'-8"
<b>EXTERIOR HEIGHT (W/AC)</b>	12'-1"
<b>EXTERIOR WIDTH (W/O MIRRORS)</b>	90"
<b>INTERIOR HEIGHT (LIVING AREA)</b>	84"
<b>AWNING SIZE</b>	15'
<b>FUEL (GAL)</b>	26.4
<b>LPG (LBS)</b>	68.2
<b>FRESH/WASTE/GRAY WATER (GAL)</b>	30 / 34.5 / 37
<b>WATER HEATER (GAL)</b>	Tankless
<b>FURNACE (BTUS)</b>	30,000
<b>EXTERIOR STORAGE CAPACITY (CU. FT.)</b>	47
<b>HITCH WEIGHT RATING (LBS)</b>	5,000





# INTERIOR OPTIONS



ARTIC FROST



CLOUD NINE



MIDTOWN TAUPE



ARTISAN CHERRY



PRESTIGE MAPLE



LEATHERETTE  
FURNITURE



KITCHEN & BATH COUNTERTOP



DINETTE & BEDROOM COUNTERTOP



FLOORING



LEATHERETTE  
ACCENT



# SPECIAL FEATURES CLASS C



Back-up Monitor with Integrated Rear Wall Camera



Black Tank Flush System



Bedroom Charging Station and Dedicated CPAP Outlet and Storage Location



Solar Charge Controller  
Solar Panel Ready



360° Siphon® Vent Cap for Tank Odor Prevention



8,000-lb. Trailer Hitch with 7-pin Round Connector



TPO Crowned Roof for Easy Water Runoff

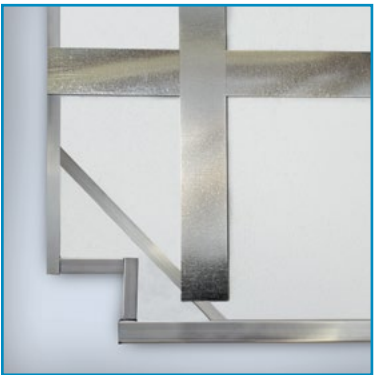


7' Interior Ceiling Height





Girard® Tankless  
Water Heater



Steel Strapping within the  
Sidewalls for Overhead  
Cabinetry Securement



# SPECIAL FEATURES SPRINTER



Bedroom Charging Station and Dedicated CPAP Outlet and Storage Location



Exterior TV on Manual Swivel with Sound Bar



Blu-Ray® Player



Solar Charge Controller  
Solar Panel Ready



360° Siphon® Vent Cap for Tank Odor Prevention



Exterior LP Connection



Back-up Monitor with Integrated Rear Camera



7' Interior Ceiling Height



Black Tank Flush System



Girard® Tankless  
Water Heater



# FEATURED HIGHLIGHTS

## CLASS C

### CONSTRUCTION & EXTERIOR

- » Automatic Leveling Jacks (LF31, PD31 & WS31)
- » HD-MAX® Exterior with Graphics Package (GR22, RC25, RS26, RW28 & KW29)
- » MEGA-Storage™ Compartment (GR22, RC25, RS26 & RW28)
- » Portable Table in MEGA-Storage™ Compartment (RW28)
- » Framed Slider Windows (GR22, RC25, RS26, RW28 & KW29)
- » Frameless Slider Windows (PD31, LF31 & WS31)

### CONSTRUCTION & EXTERIOR OPTIONS

- » Electric Stabilizing System (OPT GR22, RS26 & RW28 / STD RC25 & KW29)
- » Partial Paint on HD-MAX® Exterior with Graphics Package (STD LF31, PD31 & WS31)
- » Full Body Paint Package with Gel-Coat Sidewalls & Invisible Front Mask Paint Protection - Requires Headed/Remote Exterior Mirrors with Integrated Side View Cameras\*\* (KW29, LF31, PD31, WS31)

### AUTOMOTIVE & COCKPIT

- » Touchscreen Dash Radio with Navigation & Back-Up Monitor
- » SiriusXM® Radio Tuner & Antenna
- » Leatherette Captain's Chairs (GR22, RS26, RW28, KW29, LF31 & WS31)
- » Leatherette Swivel Captain's Chairs with Filler Cushions (RC25 & PD31)
- » Deluxe Exterior Mirrors (GR22, RC25 & RS26)
- » Emergency Engine Start Switch
- » Aluminum Running Boards
- » Stainless Steel Wheel Liners
- » Valve Stem Extenders

### AUTOMOTIVE & COCKPIT OPTIONS

- » Heated/Remote Exterior Mirrors w/Integrated Side View Cameras\*\* (OPT GR22, RC25, & RS26 / STD RW28, KW29, LF31, PD31 & WS31)
- » Power Driver's Seat (LF31 & WS31)
- » Cockpit Carpet Mat

### INTERIOR

- » Leatherette Jack-Knife Sofa (RS26, RW28, KW29, LF31, PD31 & WS31)
- » Leatherette Dream Dinette® Booth
- » 40" TV on Manual Swivel in Cab-Over (GR22, RS26, LF31 & WS31)
- » 40" TV in Living Area (RC25, RW28, KW29 & PD31)
- » 32" TV in Bedroom (LF31, PD31 & WS31)
- » Two (2) 15" TVs w/DVD Player in Bunk Bed Area (LF31)
- » Blu-Ray Player in Living Area
- » Wifi Ranger® - Wifi Extender
- » Wall Cubbie with Net & USB Charging Port
- » Double Door Gas/Electric RV Refrigerator with Smoked Acrylic Panel Inserts (GR22, RC25, RS26, RW28 & KW29)
- » 11 cu. ft. Residential Refrigerator with Ice Maker (PD31 & LF31)
- » 16 cu. ft. Residential Refrigerator with Ice Maker (WS31)
- » Recessed 3-Burner Gas Cooktop with Glass Cover (GR22, RC25, RS26, RW28 & KW29)
- » 2-Burner Gas w/Single Induction Cooktop (LF31, PD31 & WS31)
- » Microwave Oven (GR22, RC25, RS26, RW28 & KW29)
- » 30" Over-the-Range Convection Microwave Oven (LF31, PD31 & WS31)
- » Flip-Up Countertop Extension (RC25 & KW29)
- » Pop-Up Countertop Outlet & Charging Center for Electronics (LF31, PD31 & WS31)
- » Solid Surface Kitchen Countertops
- » Denver Mattress® Queen Size Bed (N/A KW29)
- » Denver Mattress® King Size Bed (KW29)
- » Bedroom Charging Station and Dedicated CPAP Machine Outlet with Storage Location
- » 12-volt Attic Fan with Cover in Bedroom

### INTERIOR OPTIONS

- » Leatherette Theater Seat IPO Jack-Knife Sofa (RW28, KW29 & WS31)
- » Cab-Over Child Safety Net
- » 12-volt Attic Fan with Cover in Cab-Over Bunk
- » Single Child Safety Tether in Dinette
- » Recessed 3-Burner Gas Cooktop/Oven with Glass Cover (GR22, RC25, RS26, RW28 & KW29)

- » Convection Microwave Oven (GR22, RC25, RS26, RW28 & KW29)
- » 32" LED TV in Bedroom (GR22, RC25, RS26, RW28 & KW29)
- » 32" LED Exterior TV on Manual Swivel with Bluetooth® Sound Bar (STD - RW28, KW29, LF31, PD31 & WS31)

### ELECTRICAL & PLUMBING

- » Onan® RV QG 4000 Gas Generator
- » Automatic Generator Start (LF31, PD31 & WS31)
- » 30-amp Shoreline Power Cord
- » 1800-watt Inverter (LF31, PD31 & WS31)
- » Dual Auxiliary House Batteries with Tray that Holds up to 4 Batteries (LF31, PD31 & WS31)
- » Solar Prep - Includes Solar Controller
- » 13,500 BTU Roof Front Air Conditioner (GR22, RC25 & RS26)
- » 15,000 BTU Roof Front Air Conditioner (RW28, KW29, LF31, PD31 & WS31)
- » Exterior LP Connection
- » Whole Coach Water Filtration System (LF31, PD31 & WS31)
- » 360° Siphon RV Holding Tank Vent Cap
- » Black Tank Flush System
- » Enclosed Sewer Area for Sewer Tank Valves (LF31, PD31 & WS31)
- » Stackable Washer/Dryer Prep (KW29)
- » Rapid Camp® Wireless Control System (LF31, PD31 & WS31)

### ELECTRICAL & PLUMBING OPTIONS

- » 15,000 (IPO 13,500) BTU Roof Front Air Conditioner (GR22, RC25 & RS26)
- » Dual 11,000 BTU Roof Air Conditioners IPO 15,000 BTU Roof Air Conditioner (RW28, KW29, LF31, PD31 & WS31)
- » Holding Tanks with Heat Pads (STD LF31, PD31 & WS31)
- » Second Auxiliary House Battery (STD RW28, KW29, LF31, PD31 & WS31)

*For a complete listing of available features visit: [thormotorcoach.com/quantum](http://thormotorcoach.com/quantum).*

## SPRINTER

### CONSTRUCTION & EXTERIOR

- » Electric Stabilizing System
- » One-Piece Fiberglass Front Cap with LED Accent Lighting
- » HD-MAX® Exterior with Graphics Package
- » Lighted Rotocast Storage Compartments
- » Flush Mount Radius Compartment Doors
- » Power Patio Awning with Integrated LED Lighting

### CONSTRUCTION & EXTERIOR OPTIONS

- » Full-Body Paint Package with Invisible Front Mask Paint Protection

### AUTOMOTIVE & COCKPIT

- » Touchscreen Dash Radio with Navigation, Back-Up Monitor & Integrated Camera
- » SiriusXM® Radio Tuner & Antenna
- » Deluxe Heated/Remote Exterior Mirrors
- » Tilt Leather Steering Wheel with Audio Buttons to Control Dash Radio
- » Leatherette Swivel Captain's Chairs with Two (2) Filler Cushions
- » Cockpit Carpet Mat
- » Stainless Steel Wheel Liners
- » Keyless Entry System
- » Valve Stem Extenders

### INTERIOR

- » 40" TV in Living Area (CR 24)
- » 32" TV on Manual Swivel in Living Area (KM24)
- » 32" Exterior TV on Manual Swivel with Bluetooth® Sound Bar

- » Blu-Ray Player in Living Area
- » Wifi Ranger® - Wifi Extender
- » Cab-Over Bunk Ladder
- » Wall Cubbie with Net & USB Charging Port
- » Leatherette Theater Seating with Footrests (CR24)
- » Leatherette Dream Dinette® Booth (KM24)
- » Leatherette Dream Dinette® Booth with Two (2) Storage Drawers (CR24)
- » Double Door Gas/Electric RV Refrigerator with Smoked Acrylic Panel Inserts
- » 3-Burner Gas Cooktop with Glass Cover (KM24)
- » 2-Burner Gas Cooktop with Glass Cover & Electric Start (CR24)
- » Convection Microwave Oven
- » Solid Surface Kitchen Countertop
- » 12-volt Fan in Kitchen
- » Denver Mattress® Queen Size Bed (KM24)
- » Denver Mattress® Full Size Bed (CR24)
- » Bedroom Charging Station and Dedicated CPAP Machine Outlet with Storage Location
- » 12-volt Attic Fan with Cover in Bathroom & Bedroom

### INTERIOR OPTIONS

- » 32" TV in Bedroom
- » Cab-Over Child Safety Net
- » 12-volt Attic Fan with Cover in Cab-Over Bunk
- » Single Child Safety Tether in Dinette (KM24)

### ELECTRICAL & PLUMBING

- » Onan® RV QG 3600 LP Generator
- » 30-amp Shoreline Power Cord
- » Automatic Shoreline-to-Generator Transfer Switch
- » Battery Disconnect Switch
- » 13,500 BTU Roof Front Air Conditioner
- » Systems Control Center
- » Exterior LP Connection
- » Solar Prep - Includes Solar Controller
- » Tankless Water Heater
- » 1" Fresh Water Tank Drain
- » 360° Siphon RV Holding Tank Vent Cap
- » Black Tank Flush System
- » Outside Shower

### ELECTRICAL & PLUMBING OPTIONS

- » Onan® RV QD 3200 Diesel Generator
- » 15,000 (IPO 13,500) BTU Roof Front Air Conditioner
- » Holding Tanks with Heat Pads
- » Second Auxiliary House Battery

*For a complete listing of available features visit: [thormotorcoach.com/quantum-sprinter](http://thormotorcoach.com/quantum-sprinter).*



**Made to fit.**

**IMPORTANT—PLEASE READ:** This brochure reflects product design, fabrication, material, components and specifications at the date of printing, which date is disclosed below. Please visit us online at [ThorMotorCoach.com](http://ThorMotorCoach.com) or consult with your selling dealership for the latest in standards, options, specification and technical information. Photographs in the brochure may depict optional equipment or may only be available in certain floor plans. Components, appliances and the chassis may have been manufactured in a calendar year before the vehicle's designated model year. All capacities are approximate. The actual length of the vehicle may differ from that indicated in the brochure due to variances in the manufacturing processes and/or installed components. All dry weights are based on standard model features and do not include optional features or equipment. Component part and appliance manufacturers issue limited warranties covering portions of the vehicle not covered under the limited warranty we issue. Copyright Thor Motor Coach, Inc. © OH 10/01/18



[thormotorcoach.com/quantum](http://thormotorcoach.com/quantum)

P.O. Box 1486, Elkhart, IN 46515 Sales Department: 800.860.5658 Customer Service: 877.855.2867