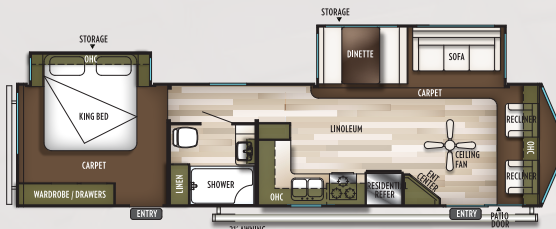


WILDWOOD LODGE / DLX

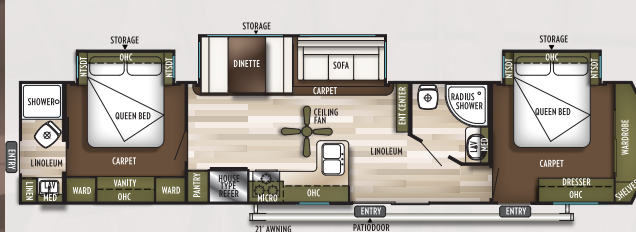


WE DON'T WAIT FOR THE FUTURE. **WE BUILD IT!**

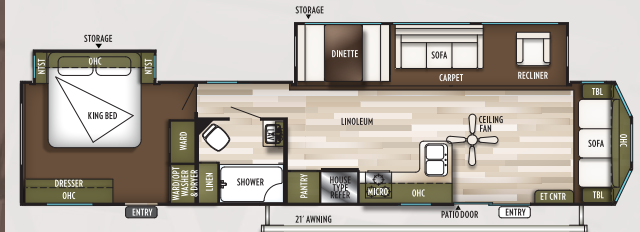




353FLFB *DLX SERIES* UYW 8620



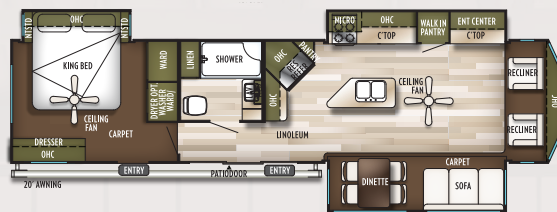
4002Q *DLX SERIES* UYW 10240



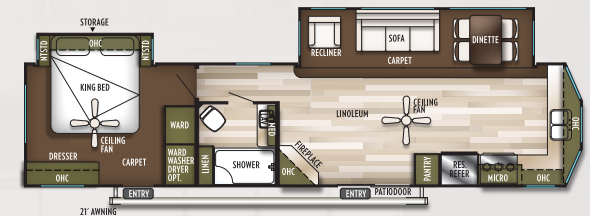
40FDEN *DLX SERIES* UYW 9720



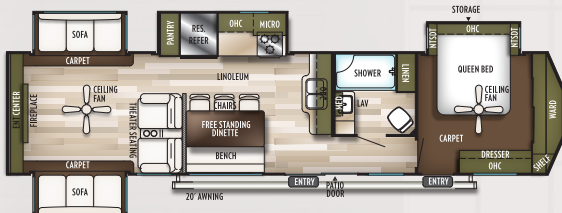
42QBQ *DLX SERIES* UYW 11700



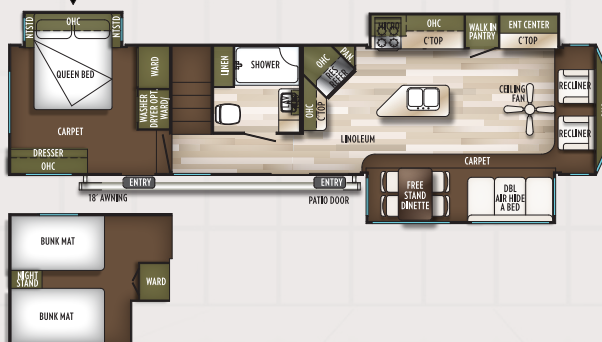
393FLT *LODGE SERIES* UYW 10970



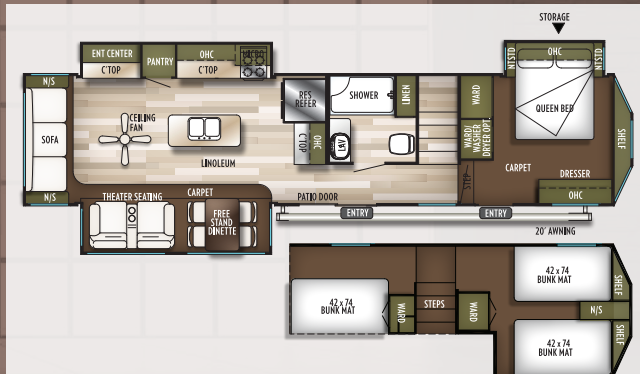
394FKDS *LODGE SERIES* UYW 10075




395RET *LODGE SERIES* UYW 11298



4092BFL *LODGE SERIES* UYW 11853



42DL *GRAND LODGE* UYW 12660

	353FLFB	4002Q	40FDEN	42QBQ	393FLT	394FKDS	395RET	4092BFL	42DL	LODGE SERIES
UYW	8620	10240	9720	11700	10970	10075	11298	11853	12660	360° TOURS
Hitch Wt.	1290	1260	1295	1325	1535	1555	1468	1605	1855	 SCAN ME
Ext. Length	38'3"	43'7"	42'6"	42'10"	40'5"	40'8"	40'10"	41'8"	41'8"	
Ext. Height	11'11"	12'3"	11'11"	12'3"	12'8"	12'8"	12'8"	13'4"	13'4"	
Fresh Water	39	39	40	40	39	39	39	39	40	
Gray Water	50	90	40	80	80	90	80	80	80	
Black Water	40	80	40	80	40	40	40	40	40	
Awning Size	21'	21'	21'	20'	21'	21'	21'	18'	20'	https://l.ead.me/bbliyB



42DL (SHOWN IN CLAY DECOR)

42DL (SHOWN IN CLAY DECOR)

WHEN YOU COMPARE THE DIFFERENCE IS CLEAR

9" PILLOW-TOP DENVER® MATTRESSES

WILDWOOD

THIN AND FIRM MATTRESSES

COMPETITION

LAMINATE COUNTERTOPS

COMPETITION

FIREPLACE IN EVERY MODEL

WILDWOOD

HYPO-ALLERGENIC CENTRAL VACUUM

WILDWOOD

WHO KNOWS?

COMPETITION

WHO KNOWS?

COMPETITION

BLACK & BORING

COMPETITION

STAINLESS STEEL APPLIANCES

WILDWOOD

LG® SOLID SURFACE COUNTERTOPS

WILDWOOD

VISIT FORESTRIVERINC.COM/WILDWOOD

TO EXPERIENCE COMPLETE STANDARDS & MUCH MORE

**24/7 EMERGENCY
ROADSIDE ASSISTANCE
WITH VEHICLE PURCHASE***

TOWING	WINCH-OUT
JUMP-STARTS	MOBILE MECHANIC
TIRE CHANGES	TECHNICAL
FLUID DELIVERY	SUPPORT
LOCKOUT	DEALER LOCATOR
SERVICE	SERVICES



*VALID FOR 1 YEAR FROM DATE OF PURCHASE

FREE MEMBERSHIP
to Forest River Owners' Group

www.forestriverfrog.com



Learn More
Scan this barcode using
a QR Reader on your
smart phone to learn
more about Forest River.



A Berkshire Hathaway company.

FOREST RIVER, INC. 55470 G.R. 1 ELKHART, IN 46515 | (574) 533-5934
WWW.FORESTRIVERINC.COM/WILDWOOD | WWW.FORESTRIVERACCESSORIES.COM



PRE-DELIVERY INSPECTION FACILITY

20,000 square feet of quality assurance. The bare essentials for a premium product. This state-of-the-art facility gives immediate daily feedback to production for quality assurance in every unit built.

Specification Definitions

GVWR (Gross Vehicle Weight Rating) - is the maximum permissible weight of the unit when fully loaded. It includes all weights, inclusive of all fluids, cargo, optional equipment and accessories. For safety and product performance do NOT exceed the GVWR.

GAWR (Gross Axle Weight Rating) - is the maximum permissible weight, including cargo, fluids, optional equipment and accessories that can be safely supported by a combination of all axles.

UVW (Unloaded Vehicle Weight)* - is the typical weight of the unit as manufactured at the factory. It includes all weight at the unit's axle(s) and tongue or pin and LP Gas. The UVW does not include cargo, fresh potable water, additional optional equipment or dealer installed accessories.

*Estimated average based on standard build optional equipment.

CCC (Cargo Carrying Capacity)** - is the amount of weight available for fresh potable water, cargo, additional optional equipment and accessories. CCC is equal to GVWR minus UVW. Available CCC should accommodate fresh potable water (8.2 lbs per gallon). Before filling the fresh water tank, empty the black and gray tanks to provide for more cargo capacity.

** Estimated average based on standard build optional equipment

Each Forest River RV is weighed at the manufacturing facility prior to shipping. A label identifying the unloaded vehicle weight of the actual unit and the cargo carrying capacity is applied to every Forest River RV prior to leaving our facilities.

The load capacity of your unit is designated by weight, not by volume, so you cannot necessarily use all available space when loading your unit.

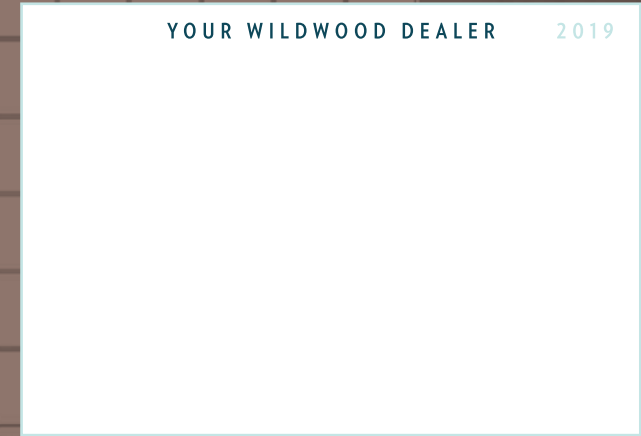
All information contained in this brochure is believed to be accurate at the time of publication. However, during the model year, it may be necessary to make revisions and Forest River, Inc., reserves the right to make all such changes without notice, including prices, colors, materials, equipment and specifications as well as the addition of new models and the discontinuance of models shown in this brochure. Therefore, please consult with your Forest River dealer and confirm the existence of any materials, design or specifications that are material to your purchase decision. Litho. U.S.A. FOR 1422 P/W: 2017.11.01

CUSTOMER SATISFACTION



www.ForestRiverBuyLocal.com

YOUR WILDWOOD DEALER 2019



WILDWOOD
PRODUCT FAMILY



X-LITE



WILDWOOD



HERITAGE GLEN



DLX | LODGE | GRAND LODGE