

Sprinter

LIMITED
CAMPFIRE

FIFTH WHEELS
TRAVEL TRAILERS

RV LIFESTYLE

REDEFINED



The ultimate ownership experience.

The goal of Keystone RV Company is to surprise and delight our owners at each and every touchpoint. We're happy when our campers are happy, and we are committed to providing the very best ownership experience in the industry.



**Keystone RV
Company**

1 EASIER SHOPPING.

At Keystone, we make choosing an RV as easy as finding the Big Dipper on a dark summer night. With comprehensive online product information, Key Connect™ product advisors, and an unparalleled dealer network, we will help you select the perfect RV for your family's adventure.

2 INNOVATIVE THINKING.

The road's a nicer place when you have the industry's smartest features behind you. Keystone leads the pack in patented innovations that make our RVs safer, more comfortable, and easier to operate.

3 LONG HAUL QUALITY.

To keep you on the road, there are certain things we just won't build a Keystone RV without. Game-changing features like our Unified Wiring Standard, Tru-Fit™ five-point slide construction, and no-fail Tuf-Lok™ A/C duct joiners combined with exhaustive testing and inspections are some of the reasons why Keystone is able to offer our owners the industry's best 3-year limited structural warranty.

4 WORRY-FREE CUSTOMER SERVICE.

Wherever the road takes you, you're never too far from an authorized Keystone service center. We also offer live service assistance, ultra-fast parts shipping, online maintenance tips and tricks, and a single-point warranty claims policy. *That's* peace of mind.

5 KEYSTONE NATION.

When you choose Keystone, you become a part of one of the largest camping families in the country. We're Keystone Nation. A friendly community where people share photos, travel tips and amazing stories – all in the spirit of camaraderie and adventure. Come join us.

Experience the Sprinter lifestyle by visiting [#keystonesprinter](#)



Keystone EXCLUSIVE Innovations

Year after year, Keystone RV's experienced team delivers Built For the Long Haul quality you expect and exclusive innovations you won't find anywhere else.



3-year Limited Structural Warranty, 1-year Limited Base Warranty

Every new Keystone RV comes with the industry's best three-year limited structural warranty AND a one-year limited base warranty. Ask your dealer, visit keystonerv.com, or call Keystone owner relations for details.



4G LTE and Wi-Fi Prep

All units are equipped with a new Furrion® antenna that integrates 4G LTE and Wi-Fi with standard VHF/UHF/AM/FM reception.



KeyTV™

No more connection guesswork or poor reception. KeyTV offers a game-changing, single point of control of over-the-air, cable, and satellite feeds. Visit us online for more information.



Color-Coded Wiring

Easy-to-trace circuits simplify electrical and entertainment system troubleshooting.



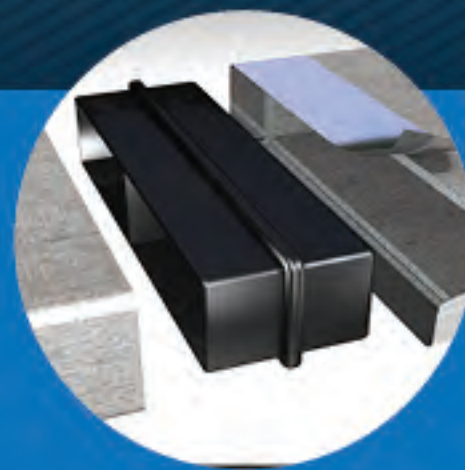
Automotive-Grade Painted Fiberglass Cap

Six layers of stunning and resilient automotive-grade paint with Key-Shield™ paint technology.



In-Floor Heating Ducts

Ducting allows for more airflow that distributes heat evenly for optimal comfort.



Tuf-Lok™ A/C Duct Joiners

Crush resistant design securely joins A/C ductwork, drastically reducing chilled-air leaks and boosting cooling efficiency and comfort.



Tru-fit™ Slide Construction

A more durable slide room design that minimizes functional motor and structural stress, resists leaking.

SPRINTER



TRAVEL TRAILERS | FIFTH WHEELS

Sprinter dares to be different

Keystone RV's very first "camping made easy" brand, Sprinter uniquely combines wide-body construction and stand-out features to bring maximum comfort and convenience to your camping lifestyle. Bold interior styling, light wood finishes and oversized windows feel fresh and engaging. Unexpected amenities like bar-height seating and designer-inspired range hood are just part of why you'll look twice at a Sprinter. Built for customers who know what they like, take their own road, and never look back. Sprinter remains Keystone's true original.

For more information, please visit keystonerv.com/sprinter

Redefining Expectations

Sprinter takes its own path, bringing unique features to RV living that you won't find anywhere else.



MORryde® Step Above™ Steps
Ultra-Safe and secure main entry with strut assist.



Zero-Degree Tested and Rated
Camp to 0° without tanks or water lines freezing.



Wireless Remote Control
Go wireless and control your lights, awnings and other features with the touch of a button.



Solid Surface Countertops with Pull-Down Faucet
Durable and moisture-resistant marbled countertops with stylish pull-down faucet.



Furrion® Oven and Cooktop
Modern flush-mount layout and one-spark ignition burner, gives you the perfect blend of performance, precision and style.



King Size Bed
Sleep comfortably on a 70" X 80" residential king mattress, available in mid-profile models.



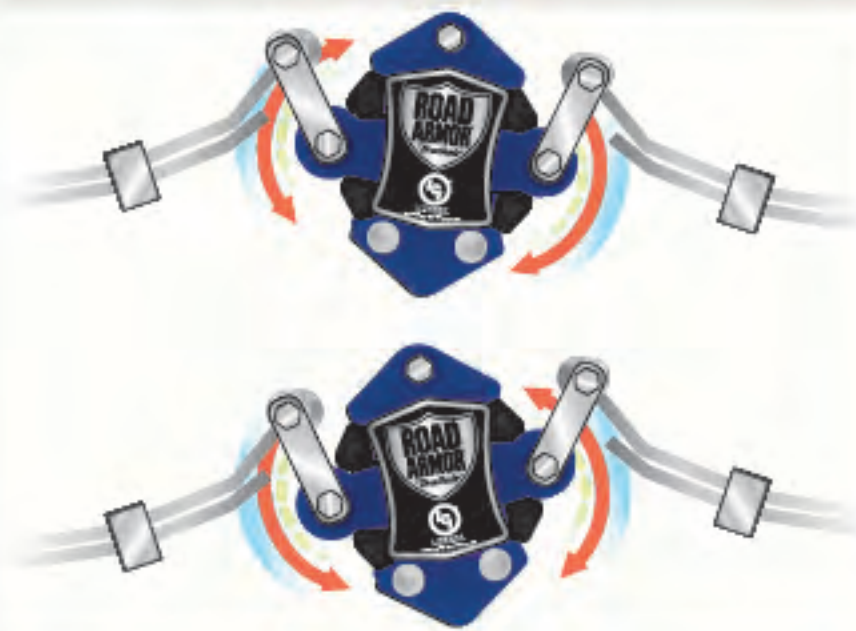
Outdoor Kitchen
Prepare meals campside with a convenient outdoor cooking and preparation station.

keyed alike

One key works all your locks!



Keyed Alike System
Avoid confusion and increase accessibility by using one key for every lock.



EXCLUSIVE Road Armor™ Suspension
Equalizes axle load to dampen shock and vibration.



MaxxAir® Fan
Dual-purpose fan with range sensors can run as a vent or a ceiling fan. Provides superior circulation throughout the coach.

One-of-a-Kind Convenience

Packed with features that make RV operation easier than ever before.



more product detail at
www.keystonerv.com/sprinter



Bold Elegance

Sprinter's unique design and forward-thinking décor creates a beautiful space for entertaining or for a relaxing getaway. We pay careful attention to every detail, from our best-in-class 100" wide-body right down to the crown molding around our cabinetry. We've implemented a new light and tranquil colorway across the lineup, blending cool greys, browns and whites to create an appealing, cohesive space. Along with updated décor, other jaw-dropping features like bar-height seating, and stunning tile backsplash that perfectly frames a residential-size stainless steel range hood, are guaranteed to impress.

(Range hood available in Sprinter 320MLS, 3550/51FWMLS.)

Wanderlust

Sprinter truly amplifies the magic of adventuring with ambient LED lighting and beautiful features that can only be found in the industry's only wide-body, mid-profile brand.






more product detail at
www.keystonerv.com/sprinter

Sprinter

LIMITED TRAVEL TRAILER FEATURES

- Extra-large tank sizes
- 100" wide-body construction offers the most living space and superior towability
- Enclosed & heated underbelly
- Solar prep & rear camera prep
- LP quick connect
- Dyna Span® seamless floor decking with 25-year warranty
- 2" exterior walls
- Norco cable slides
- Friction-hinge power awning w/manual override and speakers
- LED interior lighting
- 30" friction-hinge entry doors
- HDMI entertainment center
- High efficiency A/C's
- Exceptionally durable and waterproof patent-pending automotive windshield design
- 60" X 80" queen bed
- 70" X 80" king beds (bed slide models only)
- Walkable roof with rear-wall ladder prep for easy maintenance
- Solid surface countertops



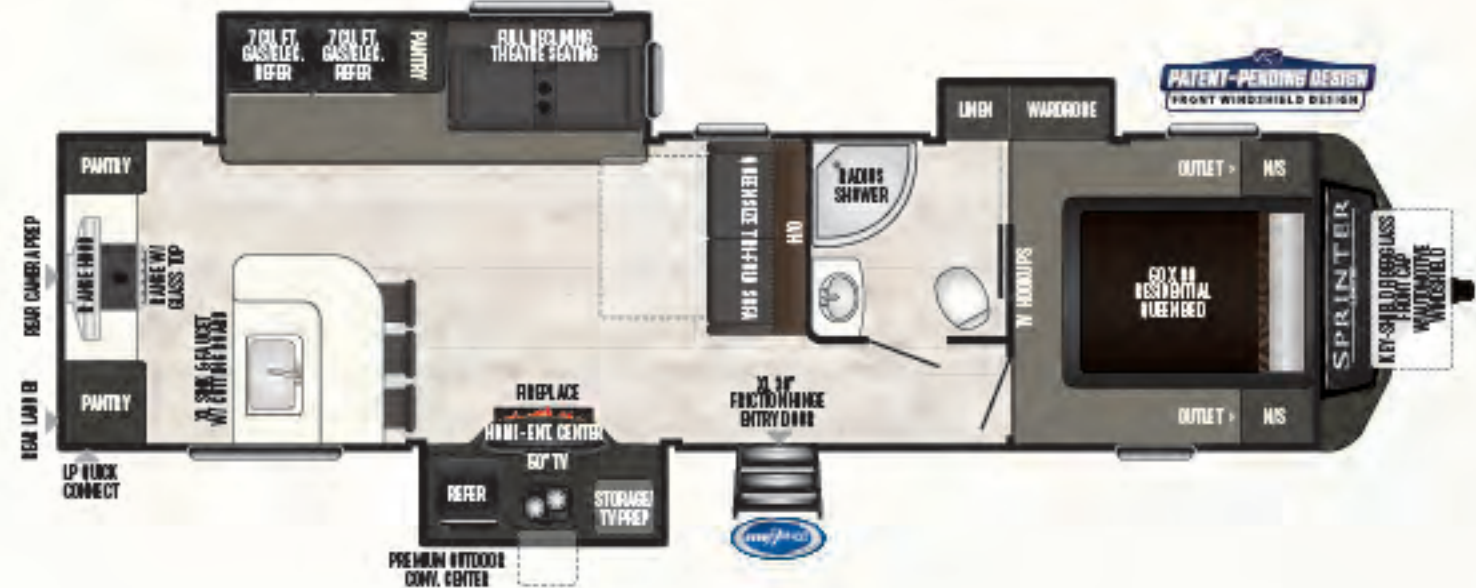
Premium Thermal Package with Astro-Foil

Stay warmer when the weather gets chilly!

- Independently tested to perform from 0 – 100 degrees
- XL 35k BTU furnace
- Dual layer of insulation, and layer of Astro-Foil in the roof
- Heated & enclosed underbelly w/ layer of Astro-Foil insulation
- Heated & enclosed gate valves
- Layer of Astro-Foil insulation behind front cap
- 2" thick sidewalls
- R equivalent values: Front wall (R-25), Rear wall (R-15), Sidewalls (R-11), Floor (R-35), Roof (R-30)

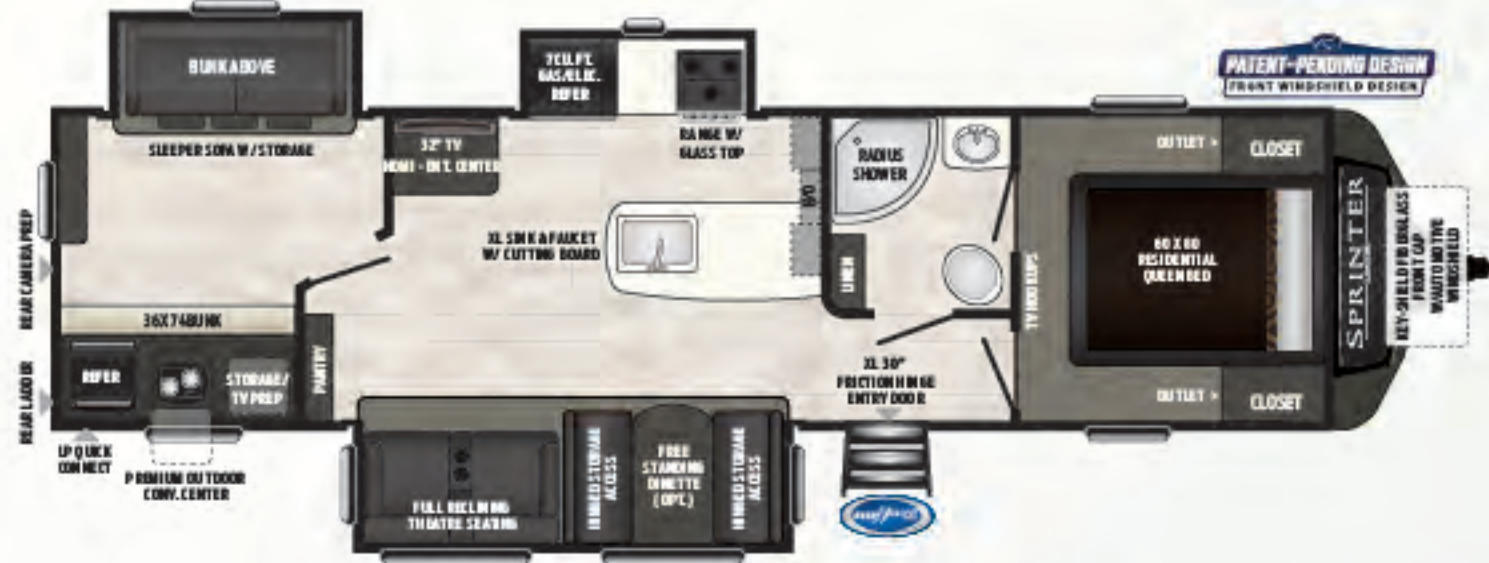
320MLS

Mid-living w/ the best entertaining kitchen area, 2 refrigerators, and windshield
 Weight: 8785 LBS. | Length: 36' 7"



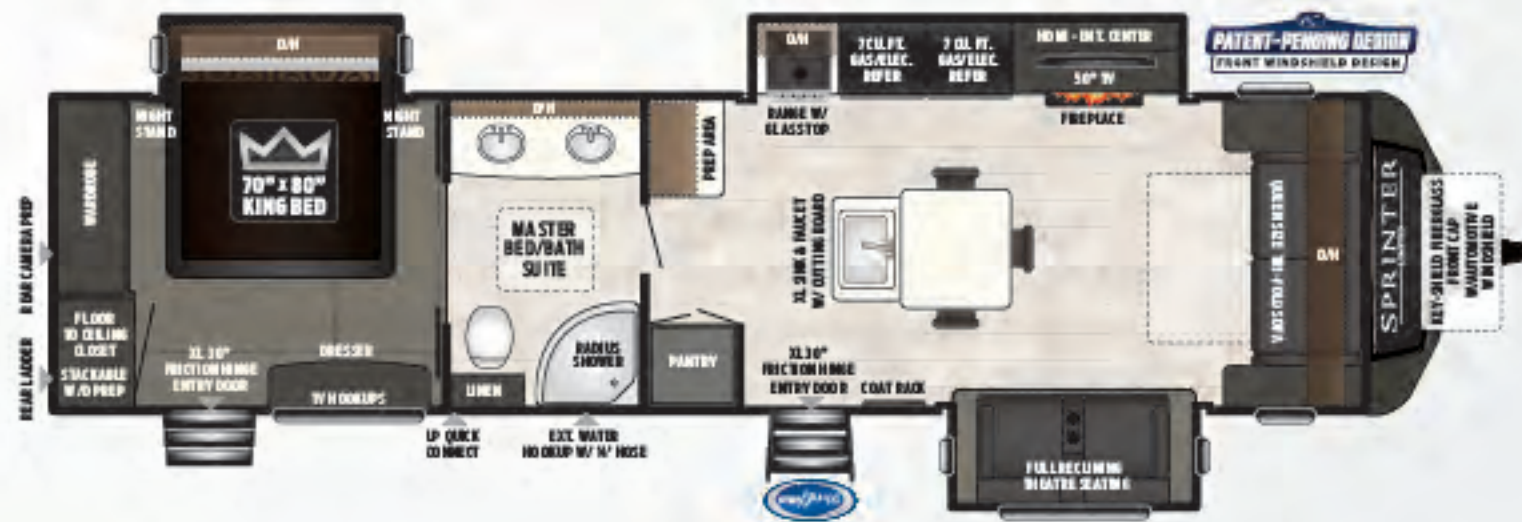
325BMK

Mid-kitchen bunkhouse w/ dedicated privacy bunkroom, theater seating, and windshield
 Weight: 8679 LBS. | Length: 36' 9"



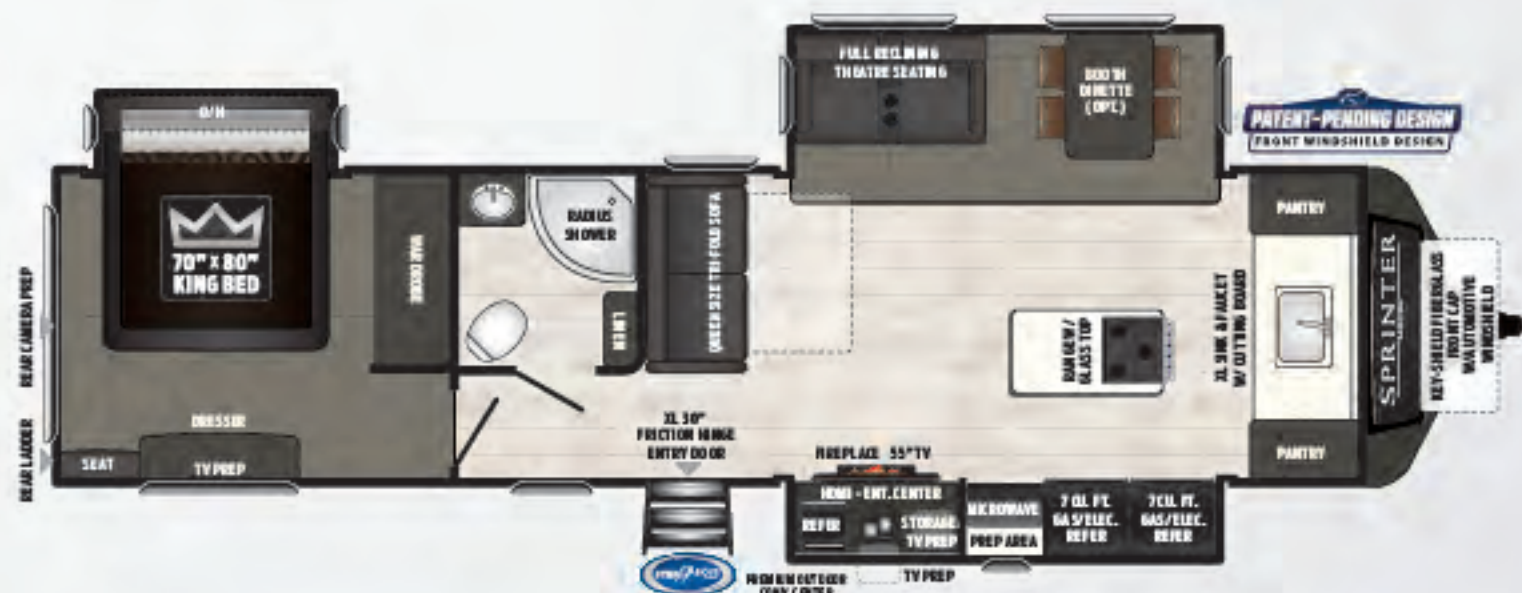
330KBS

Master suite w/ 2 sinks, king bed, w/d prep, 2 refrigerators, unique island, and windshield
 Weight: 8935 LBS. | Length: 37' 9"



333FKS

Front kitchen w/ king bed slide, 2 refrigerators, outdoor convenience center, and windshield
 Weight: 8994 LBS. | Length: 37' 9"

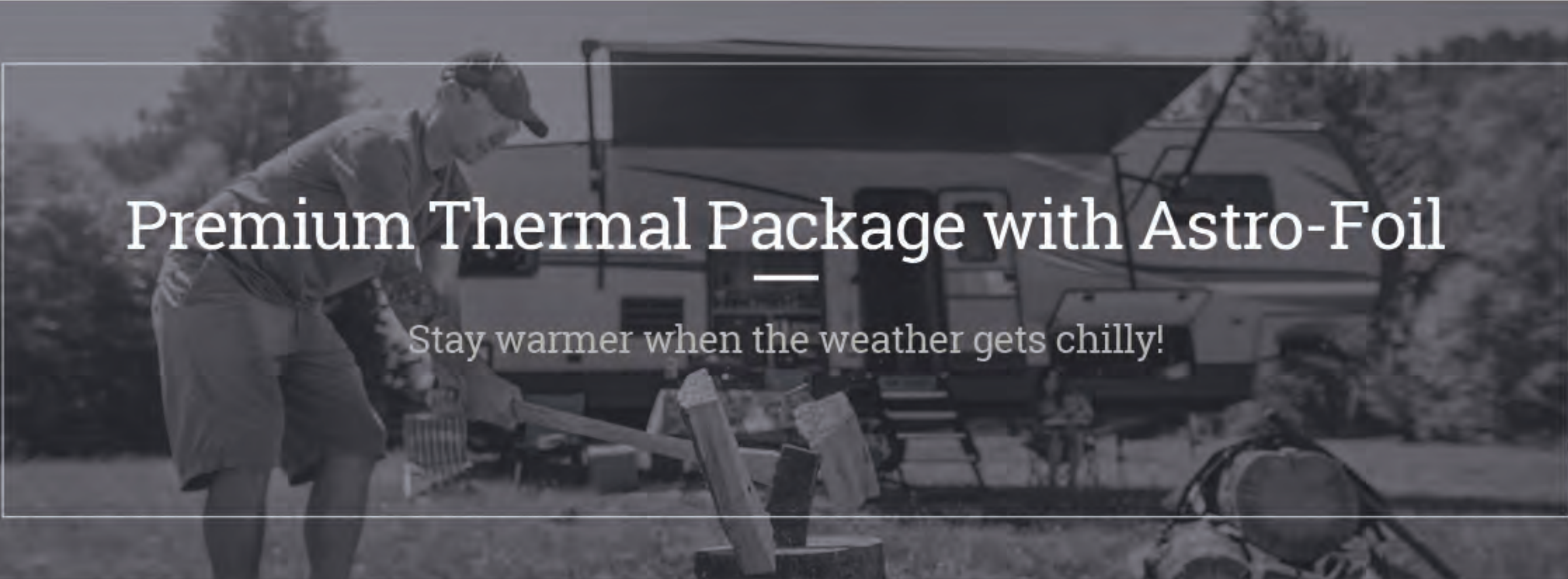




more product detail at
www.keystonerv.com/sprinter

Sprinter | LIMITED FIFTH WHEEL FEATURES

- Extra-large tank sizes
- 100" wide-body construction offers the most living space and superior towability
- Enclosed & heated underbelly
- Solar prep & rear camera prep
- LP quick connect
- Dyna Span® seamless floor decking with 25-year warranty
- 2" exterior walls
- Norco cable slides
- Friction-hinge power awning w/manual override and speakers
- LED interior lighting
- 4-Point auto leveling system
- Residential refrigerator
- MaxxAir® Fan
- 30" friction-hinge entry doors
- HDMI entertainment center
- High efficiency A/C's
- Exceptionally durable and waterproof patent-pending automotive windshield design
- 70" X 80" king beds
- Solid surface countertops
- Walkable roof with rear-wall ladder for easy maintenance



Premium Thermal Package with Astro-Foil

Stay warmer when the weather gets chilly!

- Independently tested to perform from 0 – 100 degrees
- XL 35k BTU furnace
- Dual layer of insulation, and layer of Astro-Foil in the roof
- Heated & Enclosed underbelly w/ layer of Astro-Foil insulation
- Heated & Enclosed gate valves
- Layer of Astro-Foil insulation behind front cap
- 2" thick sidewalls
- R equivalent values: Front wall (R-25), Rear wall (R-15), Sidewalls (R-11), Floor (R-35), Roof (R-30)



3150/51FWRLS | Rear living room w/ bar-top island, king bed, and o/s convenience center
Weight: 10195 LBS. | Length: 35' 3"



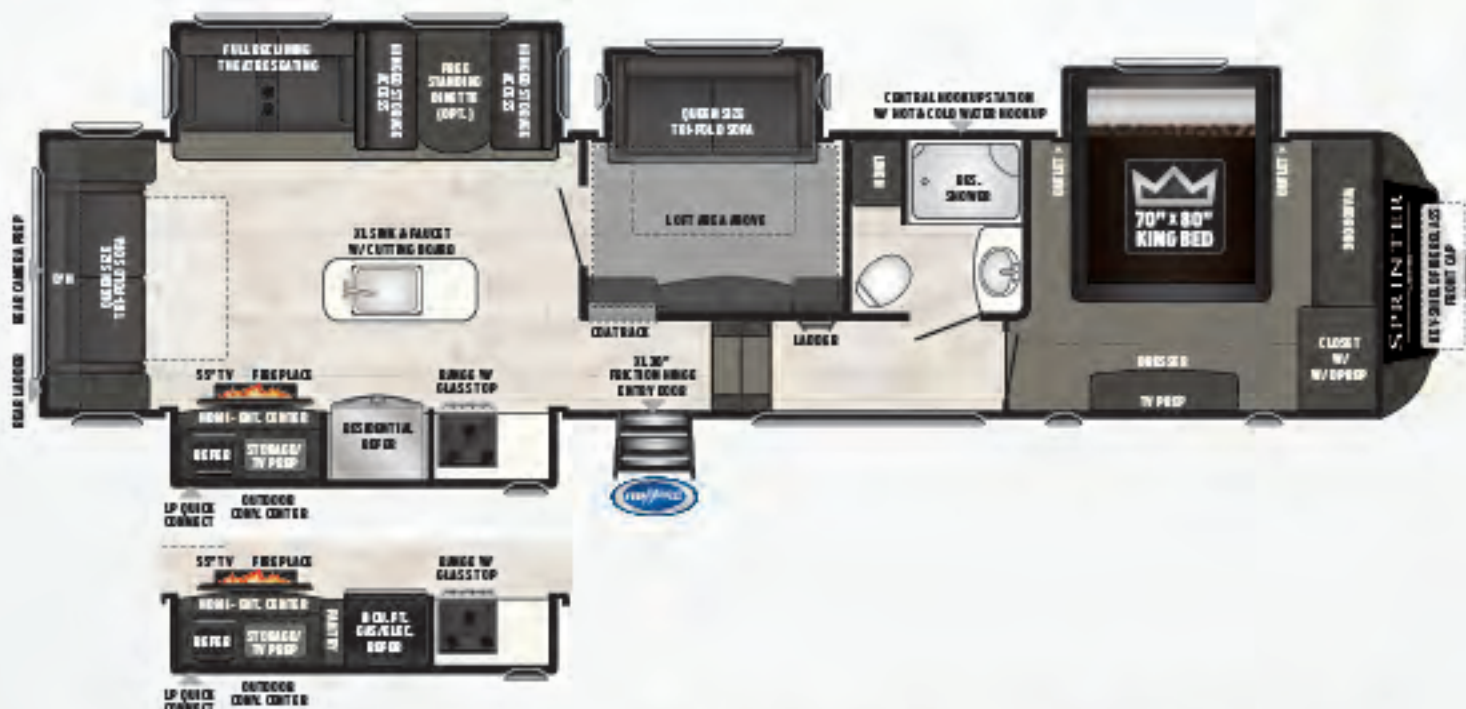
3340/41FWFLS | Front living room w/ bartop, and both sofas fold out to make ample additional sleeping
Weight: 10745 LBS. | Length: 37' 10"



3530/31FWDEN | Rear-den w/ bartop, and both sofas fold out to make ample additional sleeping
Weight: 10880 LBS. | Length: 39' 0"



3550/51FWMLS | Mid-living w/ the best entertaining kitchen area, and master suite w/ sitting area
Weight: 11040 LBS. | Length: 39' 0"



3570/71FWLFT | Mid-bunkroom w/ overhead loft that includes king bed slide-out, and outdoor convenience center
Weight: 11445 LBS. | Length: 39' 6"



3580/81FWFKS | First front kitchen at a mid price-point, comes w/ large refrigerator and windshield
Weight: TBD LBS. | Length: TBD

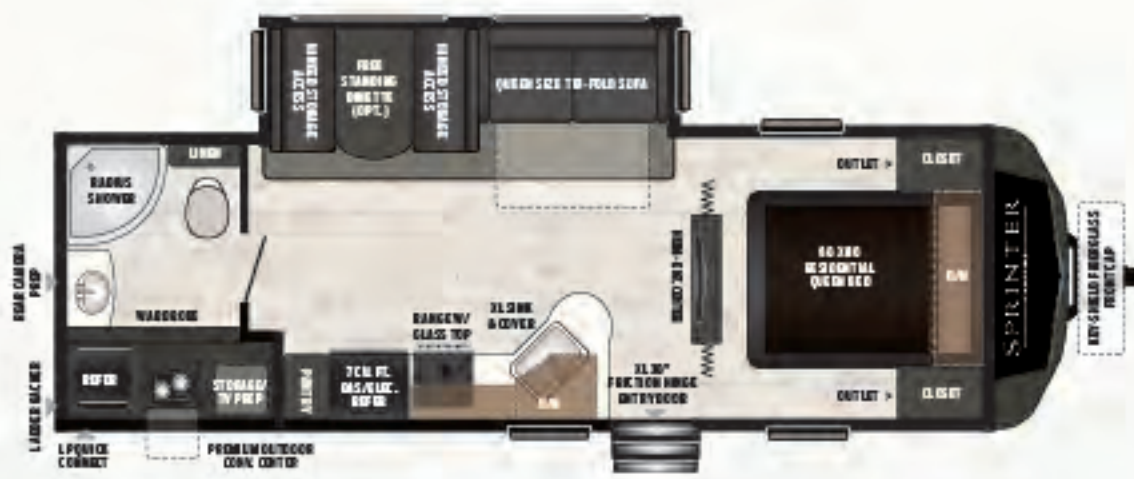
Sprinter

CAMPFIRE TRAVEL TRAILERS FLOOR PLANS

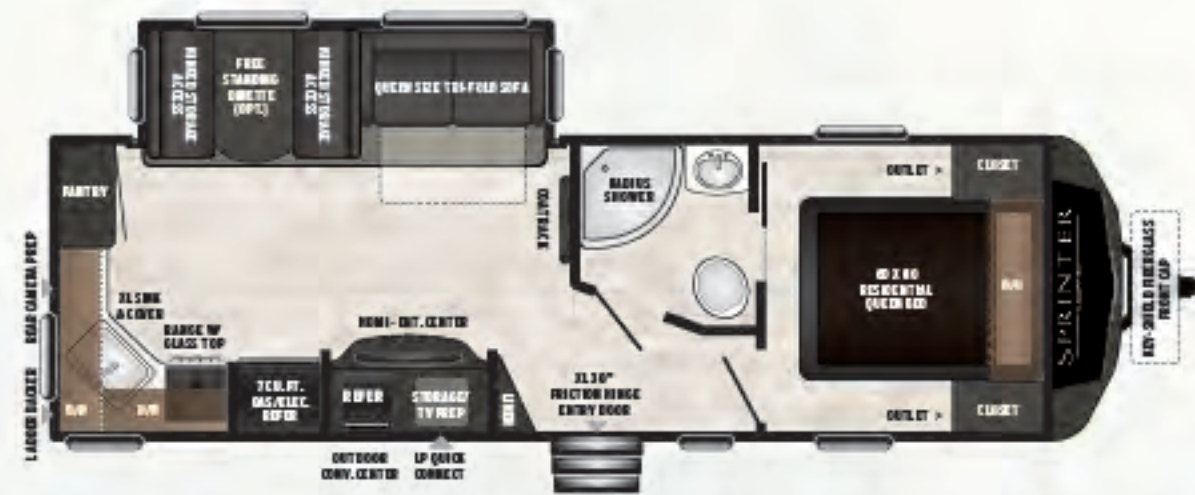
Sprinter

CAMPFIRE TRAVEL TRAILER FEATURES

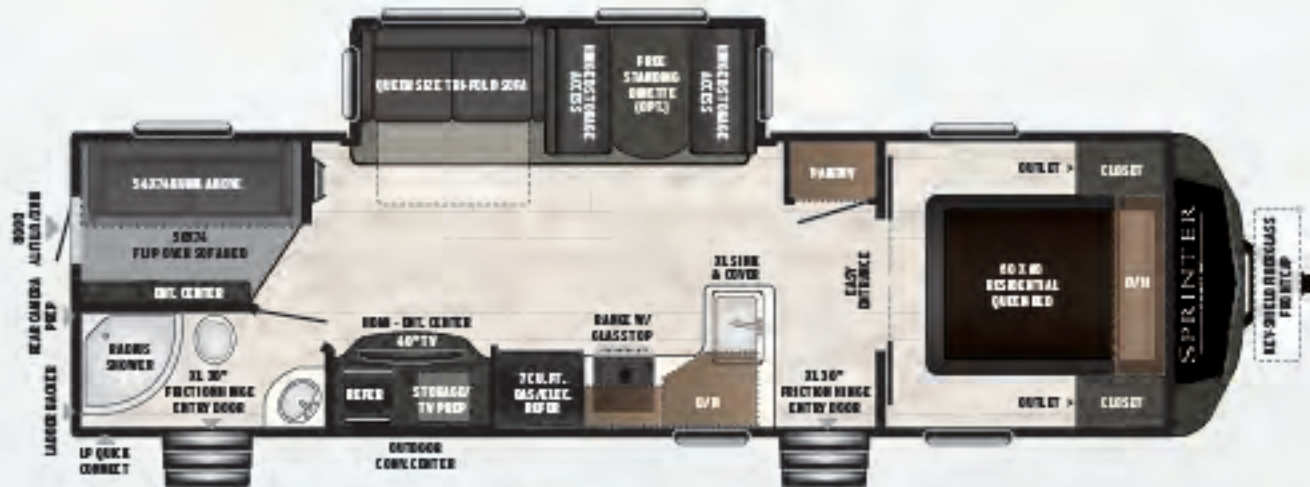
- Extra-large tank sizes
- Power stabilizer jacks
- 100" wide-body construction offers the most living space and superior towability
- Solar prep & rear camera prep
- LP quick connect
- Dyna Span® seamless floor decking w/ 25-year warranty
- 2" exterior walls
- Norco cable slides
- Friction-hinge power awning w/manual override and speakers
- LED interior lighting
- 60" X 80" queen bed
- 30" friction-hinge entry doors
- HDMI entertainment center
- High efficiency A/C's



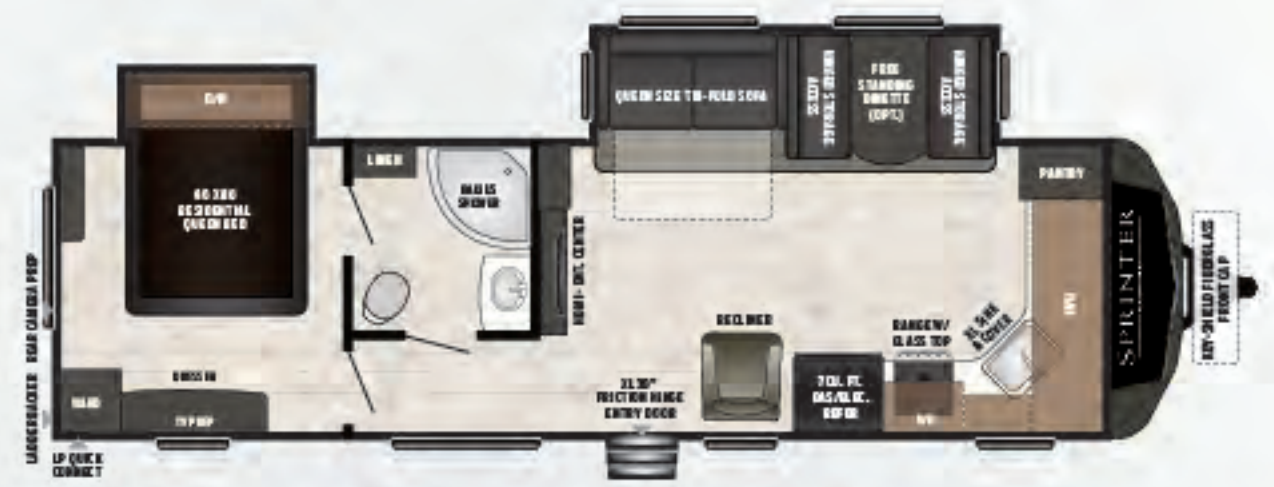
26RB Rear XL bathroom w/ premium outside convenience center
Weight: 6662 LBS. | Length: 29' 6"



26RK Rear kitchen w/ floor-to-ceiling pantry, and outside convenience center
Weight: 6890 LBS. | Length: 30' 11"



29DB Bunkhouse floor-to-ceiling pantry, bike/cargo storage, and lower sofa bunk w/ e-center
Weight: 7465 LBS. | Length: 33' 11"



29FK Front kitchen w/ ample storage, and bed slide-out
Weight: 7335 LBS. | Length: 32' 10"

Sprinter Thermal Package

Stay warmer when the weather gets chilly!

- » XL 35K BTU furnace
- » Dual layer of roof insulation
- » Heated & enclosed underbelly
- » Heated & enclosed gate valves
- » 2" thick sidewalls
- » R-equivalent values: front wall/all walls R-15; floor R-25;



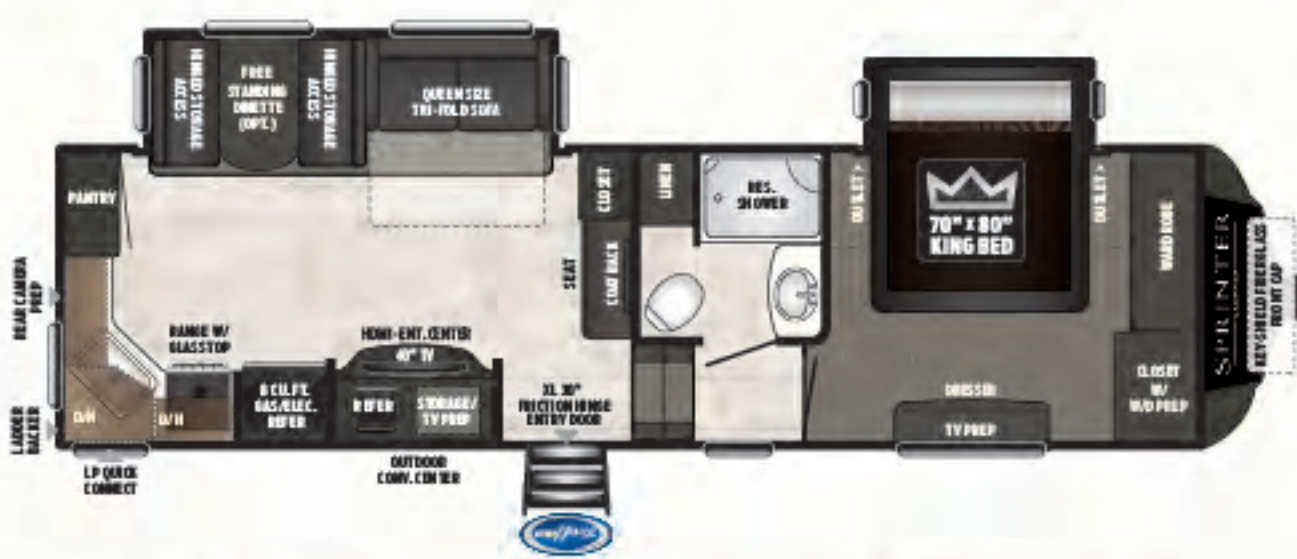
33BH Bunkhouse w/ dedicated privacy bunkroom, and premium outside convenience center
Weight: 8160 LBS. | Length: 36' 9"

Sprinter

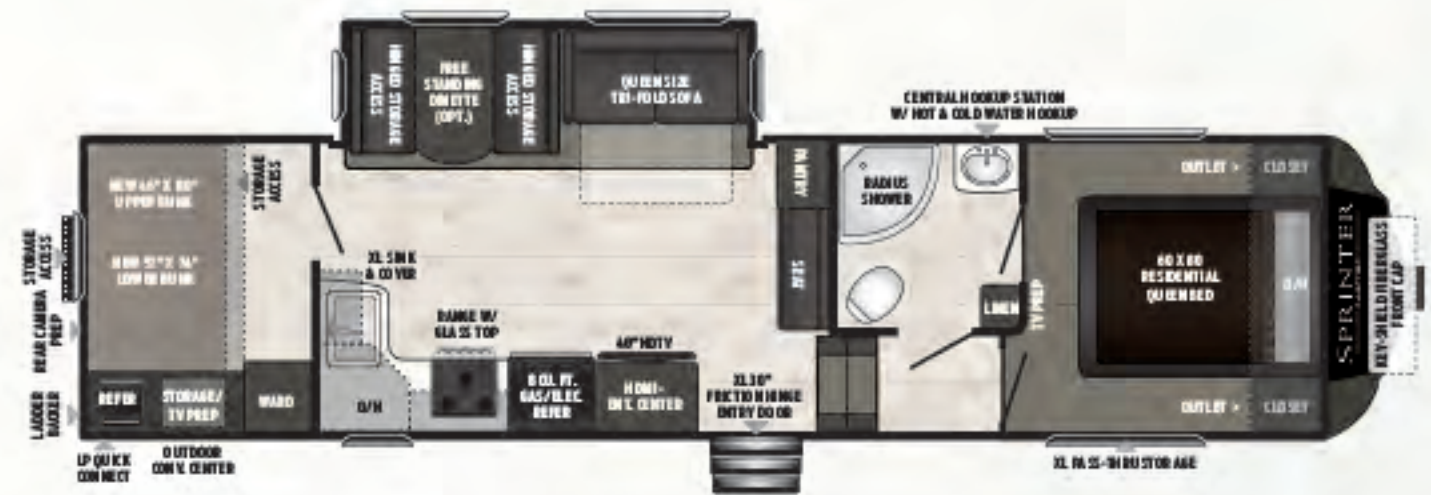
CAMPFIRE FIFTH WHEEL FEATURES

- Extra-large tank sizes
- Power stabilizer jacks
- 100" wide-body construction offers the most living space and superior towability
- Solar prep & rear camera prep
- LP quick connect
- Dyna Span® seamless floor decking w/ 25-year warranty
- 2" exterior walls
- Norco cable slides

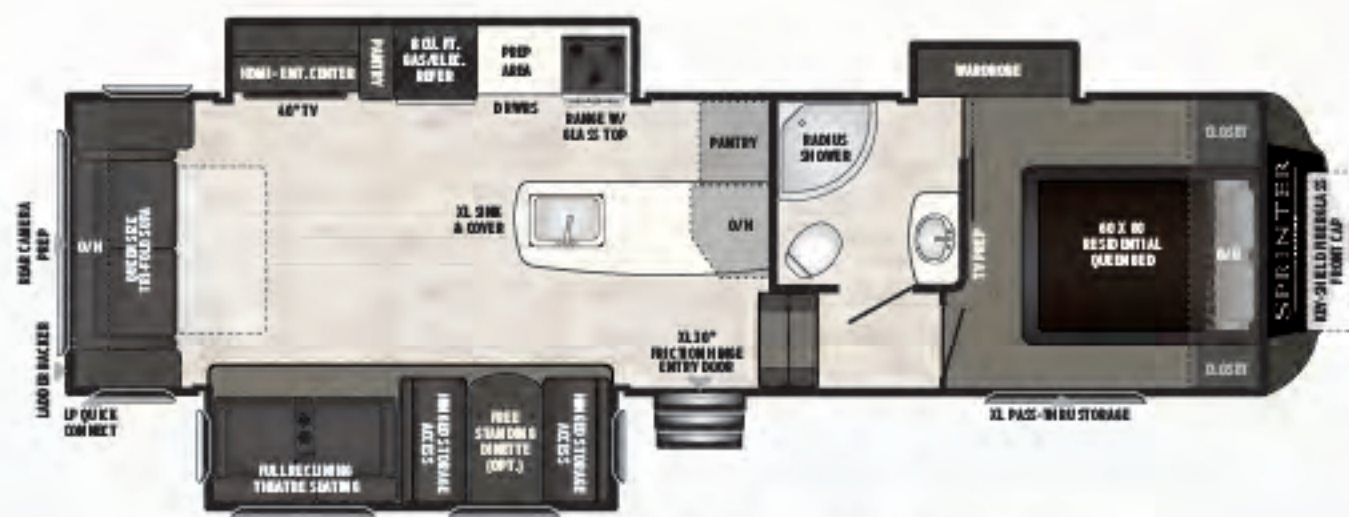
- Friction-hinge power awning w/manual override and speakers
- LED interior lighting
- 60" X 80" queen bed
- 70" X 80" king beds (bed slide models only)
- 30" friction-hinge entry doors
- HDMI entertainment center
- High efficiency A/C's



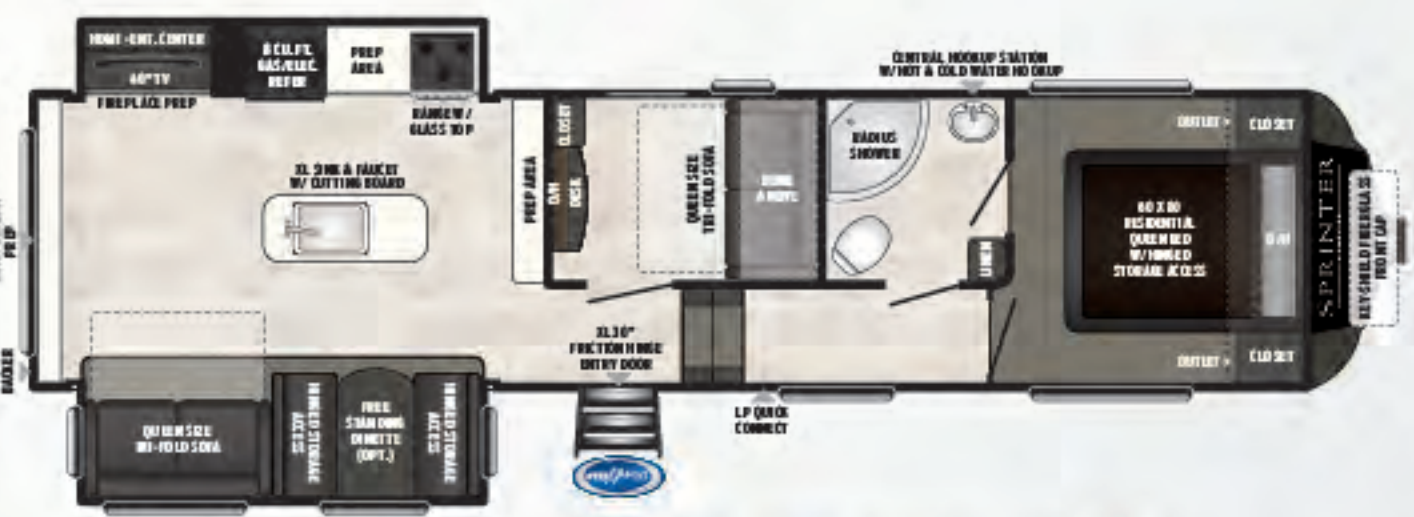
27FWML Mid-living w/ king bed slide, w/d prep, floor-to-ceiling pantry, and o/s conv. center
Weight: 8820 LBS. | Length: 31'10"



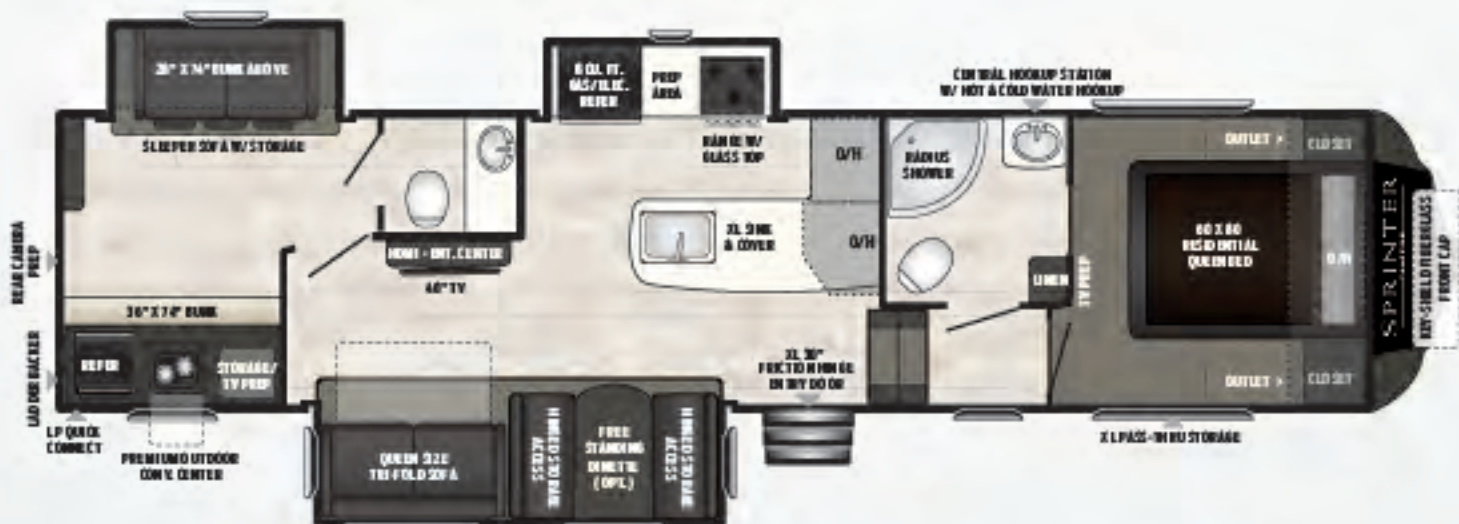
29FWBH New two slide, bunkhouse, bath & a half, camp kitchen
Weight: 8830 LBS. | Length: 34'7"



29FWRL Rear living room w/ great c-top space, and ample bedroom storage
Weight: 9027 LBS. | Length: 33'5"



31FWMB Most affordable mid-bunk in class, w/ full door pantry, and hybrid mid-bunk/utility room
Weight: 9475 LBS. | Length: 35'11"



32FWBH Bath-and-a-half Bunkhouse w/ dedicated privacy bunkroom that includes half bath
Weight: 9965 LBS. | Length: 36'11"

Sprinter Thermal Package

Stay warmer when the weather gets chilly!

- » XL 35K BTU furnace
- » Dual layer of roof insulation
- » Heated & enclosed underbelly
- » Heated & enclosed gate valves
- » 2" thick sidewalls
- » R-equivalent values: front wall/all walls R-15; floor R-25;

Sprinter

TRAVEL TRAILER & FIFTH WHEEL SPECIFICATIONS/STANDARDS/OPTIONS

LIMITED TRAVEL TRAILERS & FIFTH WHEELS

MODEL	WEIGHT	CARRYING CAPACITY	HITCH WEIGHT	FRESH WATER	WASTE WATER	GRAY WATER	LPG	LENGTH*	HEIGHT
320MLS	8785	2655	1040	81	34	68	60	36' 7"	11' 3"
325BMK	8679	2821	1380	81	34	34	60	36' 9"	11' 3"
330KBS	8935	2565	1135	81	34	102	60	37' 9"	11' 3"
333FKS	8994	2506	1210	81	34	68	60	37' 9"	11' 3"
3150FWRLS	10340	2560	2290	81	44	88	60	35' 3"	13' 2"
3151FWRLS	10195	2705	2260	81	44	88	60	35' 3"	13' 2"
3340FWFLS	10407	3593	2255	81	34	68	60	37' 10"	13' 2"
3341FWFLS	10745	3255	2300	81	34	68	60	37' 10"	13' 2"
3530FWDEN	10880	3120	2230	81	44	44	60	39' 0"	13' 2"
3531FWDEN	10880	3120	2230	81	44	44	60	39' 0"	13' 2"
3550FWMLS	11040	2960	2205	81	44	78	60	39' 0"	13' 2"
3551FWMLS	11040	2960	2205	81	44	78	60	39' 0"	13' 2"
3570FWLFT	11590	2410	2440	81	44	78	60	39' 6"	13' 2"
3571FWLFT	11590	2410	2440	81	44	78	60	39' 6"	12' 6"

CAMPFIRE TRAVEL TRAILERS & FIFTH WHEELS

MODEL	WEIGHT	CARRYING CAPACITY	HITCH	FRESH WATER	WASTE WATER	GRAY WATER	LPG	LENGTH*	HEIGHT
26RB	6662	2538	785	81	34	68	60	29' 6"	11' 1"
26RK	6920	2580	795	81	34	68	60	30' 11"	11' 1"
29DB	7375	2625	975	81	34	68	60	33' 11"	11' 1"
29FK	7540	2460	1085	81	34	68	60	32' 10"	11' 1"
33BH	8160	3040	1040	81	34	34	60	36' 9"	11' 3"
27FWML	8940	3060	1710	81	44	78	60	31' 10"	13' 0"
29FWBH	8975	2885	1570	81	44	88	60	34' 7"	13' 2"
29FWRL	9235	3105	2095	81	44	44	60	33' 5"	13' 0"
31FWMB	9475	2625	1715	81	44	78	60	35' 11"	12' 6"
32FWBH	9965	2135	1735	81	78	44	60	36' 11"	13' 0"

DISCLAIMER: Product information is as accurate as possible as of the date of publication of this brochure. All features, floor plans, and specifications in this brochure are subject to change without notice. Please also consult Keystone's web site at www.keystonerv.com for more current product information and specifications. **Tow Vehicle Disclaimer.** CAUTION: Owners of Keystone recreational vehicles are solely responsible for the selection and proper use of tow vehicles. All customers should consult with a motor vehicle manufacturer or their dealer concerning the purchase and use of suitable tow vehicles for Keystone products. Keystone disclaims any liability or damages suffered as a result of the selection, operation, use or misuse of a tow vehicle. **KEYSTONE'S LIMITED WARRANTY DOES NOT COVER DAMAGE TO THE RECREATIONAL VEHICLE OR THE TOW VEHICLE AS A RESULT OF THE SELECTION, OPERATION, USE OR MISUSE OF THE TOW VEHICLE.** *Length is defined as the distance from the centerline of hitch pin/coupler to rear bumper of trailer. Please review owner's manual prior to purchase for more information on service warranties, extended use, towing and maintenance. Owner's manuals can be found at keystonerv.com.

EXTERIOR FEATURES	CF TT	CF FW	LTD TT	LTD FW
Exclusive MaxTurn™ Technology, and Hitch Vision™		X		X
Dual battery rack	X	X	X	X
Electric stabilization jacks	X	X	X	
Ground Control® 2.0 Auto leveling jacks				X
MORryde® Step Above™ entry step (floor plan specific)		(X)	X	X
100" Wide stance axles	X	X	X	X
15K BTU ducted air conditioner	X	X	X	X
2-Tone painted front cap	X	X	X	X
30 AMP power cord (26rk, 26rb only)	(X)			
30" Friction hinge entry door	X	X	X	X
4" Extra long rain spouts	X	X	X	X
50 AMP power cord, standard		X	X	X
50 AMP service standard w/2nd A/C				X
6' 3" slide room height		X		X
Aluminum wheels	(X)	X	X	X
Backed for rear ladder on door side	X	X		
Best in class 2" laminated aluminum framed sidewalls	X	X	X	X
Black tank flush system	X	X	X	X
Blow molded seamless holding tanks	X	X	X	X
KeyTV® cable and satellite hook-up	X	X	X	X
Battery disconnect			X	X
Electric awning, friction-hinge adjustment, LED light strip, manual override, and speakers			X	X
Dexter® E-Z Lube® axles			X	X
Furrion® backup camera prep			X	X
Furrion® solar prep quick connect			X	X
64 cable slide system w/ 4-point seal			X	X
Industry best, 100" wide-body construction			X	X
Interior access, manual override for all slide rooms			X	X
Keyed Alike™ lock system			X	X
Lockable slam latch baggage doors			X	X
Outside spray port			X	X
Wi-Fi/range extender prepped antenna			X	X
Outside TV hookup with 110 recep, and cable prep in pass-through			X	X
Premium thermal package w/ Astro-Foil layer in the subfloor, roof, front wall, R equivalent values (R-30 floor; R-28 roof; R-18 slideout floor; R-20 front wall)				X
Rear bumper storage w/ end caps			X	X
Remote control system (slide-outs, electric stabilization jacks, & led light strip, awning)			X	X
Road Armor™ suspension			X	X
Splash guard under slide			X	X
Tinted safety glass windows			X	X
Tough Guard® painted skirt metal			X	X
Two 30 lb. LP bottles			X	X
X1 entry door grab handle			X	X

MaxTurn Technology™		X		X
Water heater bypass for easy winterization	X	X	X	X
Heated pass-through storage		X		X
LP quick-connect	X	X	X	X
Rear ladder			X	X
Fiberglass front cap w/ KeyShield™ technology	X	X	X	X
INTERIOR FEATURES	CF TT	CF FW	LTD TT	LTD FW
MaxxAir® power vent fan w/ rain sensor				X
12V, 55 AMP converter	X	X	X	X
16 cu. ft. stainless steel, French-door, 110 fridge w/ 1000 watt independent inverter & battery disconnect				X
30"x42" shower w/ seat (Except 3340/41)				X
35,000 BTU auto-ignition furnace	X	X	X	X
50 AMP electrical service (floorplan specific)	(X)	X	X	X
8 Cu. Ft. double-door refer, standard (3150, 3340, 3530, 3550 X2, 3570)		X		X
80" interior height	X		X	
96" wide-body interior, best in class!	X	X	X	X
All hardwood doors and drawer fronts	X	X	X	X
Beaufior linoleum w/ 7-year warranty (2-year cold crack)	X	X	X	X
Cable TV hookup with 110 outlet	X	X	X	X
Central Command Center for monitoring all tanks and battery, awning, slide-outs, lights, etc.	X	X	X	X
Screwed cabinetry with lumber-core stiles	X	X	X	X
Crown molding on cabinetry	X	X	X	X
Digital Thermostat	X	X	X	X
Fireplace (Except 3258MK)			X	X
Fireplace prep	X	X		
Flush floor bathroom/bedroom suites (no bedside step-up)		X		X
Industry best, in-floor ducted heat	X	X	X	X
Large picture window at the dinette & sofa	X	X	X	X
LED ambient lighting	X	X	X	X
LED overhead lighting in every room	X	X	X	X
LIVING ROOM FEATURES	CF TT	CF FW	LTD TT	LTD FW
Sound bar entertainment system with Bluetooth technology, front-facing quick HDMI hookup, and USB port	X	X	X	X
HD LED TV	X	X	X	X
Dedicated locations below living room TV for DVD/satellite receiver	X	X	X	X
Under booth dinette storage with easy access hinged cushions	X	X	X	X
KeyTV™ single point control of over-the-air cable, and satellite feeds	X	X	X	X
Dimmable light switch in main slide	X	X	X	X
Dedicated location below TV for DVD/satellite receiver	X	X	X	X
Shaw High grade carpeting	X	X	X	X
Tri-fold memory foam sleeper sofa w/storage	X	X	X	X
BATH FEATURES	CF TT	CF FW	LTD TT	LTD FW
Stainless steel vanity sink	X	X	X	X
Medicine cabinet with mirror	X	X	X	X
Radius glass shower (model specific)	X	X	X	X
Skylight over tub/shower	X	X	X	X
Reinforced shower support	X	X	X	X
Power roof vent fan	X	X	X	X
Porcelain foot flush toilet				X
GFI receptacles in the bathroom	X	X	X	X
Illuminated light switch	X	X	X	X
KITCHEN FEATURES	CF TT	CF FW	LTD TT	LTD FW
LED ambient lighting under kitchen countertop	X	X	X	X
Crown molding cabinetry	X	X	X	X
6-gallon gas/electric DSI auto ignition water heater	X	X	X	X
Large stainless steel sink	X	X	X	X

Industry best, 22" deep drawers with full extension ball bearing drawer guides (floor plan specific)	X	X	X	X
Lighted range hood with exhaust fan	X	X	X	X
Microwave with carousel	X	X	X	X
Sink cover/cutting board	X	X	X	X
Furrion® Drop-in Range w/ Piezo Ignition and glass stove top cover	X	X	X	X
Overhead cabinets above sink	X	X	X	X
Stainless steel appliances	X	X	X	X
BEDROOM FEATURES	CF TT	CF FW	LTD TT	LTD FW
60" x 80" queen bed (floor plan specific)	X	(X)	(X)	
King bed 70" X 80" (LTD TT bed slides only, and CF FW 27FWML only)		(X)	(X)	X
Shaw high-grade carpet in master bedroom		X	X	X
Under bed storage	X	X	X	X
Color matched bedspread	X	X	X	X
Electrical outlets near bed	X	X	X	X
Roof vent	X	X	X	X
Ample closet storage	X	X	X	X
POPULAR OPTIONS	CF TT	CF FW	LTD TT	LTD FW
Free-standing dinette with four chairs	X	X	X	X
50 AMP electrical service w/detachable cord, and 2nd A/C prep (n/a on 26RB, 26RK)	(X)	X	X	X
2nd 13.5 A/C (standard on all LTD FWs except 3150/1FWRLS)		X	X	(X)
PACKAGES				
CAMPING MADE EASY PACKAGE	CF TT	CF FW	LTD TT	LTD FW
Outside TV hookup with 110 recep, and cable prep in exterior storage area	X	X	X	X
Triple entry steps	X	X	X	X
Interior access, manual override for the slide rooms	X	X	X	X
Dual battery tray	X	X	X	X
Solar prep	X	X	X	X
LED interior lighting	X	X	X	X
Dimmer switch in living room slide-out	X	X	X	X
LUXURY PACKAGE (LTD ONLY)	CF TT	CF FW	LTD TT	LTD FW
Premium sink cover/cutting board			X	X
Radius glass shower (3340/41 only)			X	(X)
Premium pull-down sprayer faucet			X	X
MaxxAir® fan w/ rain sensor				X
Solid surface countertops			X	X
Gas struts for bed storage			X	X
Exterior ladder for easy roof maintenance			X	X
Upgraded decal package w/ raised front cap lettering			X	X
Upgraded bed spread			X	X
Premium LED recessed overhead lighting			X	X
PREMIUM THERMAL PACKAGE (LTD ONLY): Front wall (R-25), Rear wall (R-15), Sidewalls (R-11), Floor (R-35), Roof (R-30) R equivalent values	CF TT	CF FW	LTD TT	LTD FW
Independently tested to perform at 0 - 100 degrees			X	X
NASA technology Astro-Foil insulation in underbelly, roof, and front wall			X	X
2" thick sidewalls			X	X
Dual layer of insulation in roof			X	X
Best-in-class 35k BTU furnace			X	X
Heated enclosed underbelly and gate valves			X	X
THERMAL PACKAGE (CF ONLY): All Walls (R-15), Floor (R-25), Roof (R-20) R equivalent values	CF TT	CF FW	LTD TT	LTD FW
Dual layer of insulation in roof	X	X		
2" thick sidewalls	X	X		
Best-in-class 35k BTU furnace	X	X		
Heated enclosed underbelly and gate valves	X	X		

BUILT FOR THE LONG HAUL



PRINT 1.2019



**Keystone RV
Company**