

Renegade
RV

EXTREME LUXURY | EXTREME PURPOSE | EXTREME DURABILITY
www.renegaderv.com

LEGENDARY RENEGADE QUALITY - 2019 VERONA

VERONA



OUR VEHICLES CONNECT AND PROTECT
PEOPLE AROUND THE WORLD EVERY DAY.
www.revgroup.com

REV
Vehicles for life

LEGENDARY RENEGADE LUXURY - VERONA



The Verona 40VRB kitchen delivers excellent functionality and storage. Solid Maple cabinets feature soft closing drawers, hidden hinges, and satin nickel hardware, topped with polished solid surface countertops and glass tile backsplash. Stainless Steel appliances include an over-the-range convection microwave, sealed and recessed 3 burner LP cooktop, and a Samsung 18 cu. ft. French Door refrigerator with icemaker and pull-out drawer freezer. 40VRB Shown in Granite Décor.

LEGENDARY RENEGADE QUALITY - VERONA



40VRB Granite Decor Shown with optional Theatre Seating



36VSB Cappacino Decor



36VSB Cappacino Decor

Spacious and Inviting with a classic flair that never goes out of style, Verona comes with ultra-soft touch furniture, Maple hardwood cabinetry, and polished solid surface countertops. Verona 36VSB is shown in Cappacino Décor.

VERONA

LEGENDARY RENEGADE QUALITY - VERONA



VERONA LIVING SPACES

Designed for today's active families, every Verona has an impressive collection of the must-have features that savvy buyers demand. With tremendous interior and exterior storage, and an amazingly fun to drive Freightliner M2 chassis, the Verona makes getting there half the fun. As comfortable as it is beautiful, you'll want to go further and stay longer every time you hit the road.

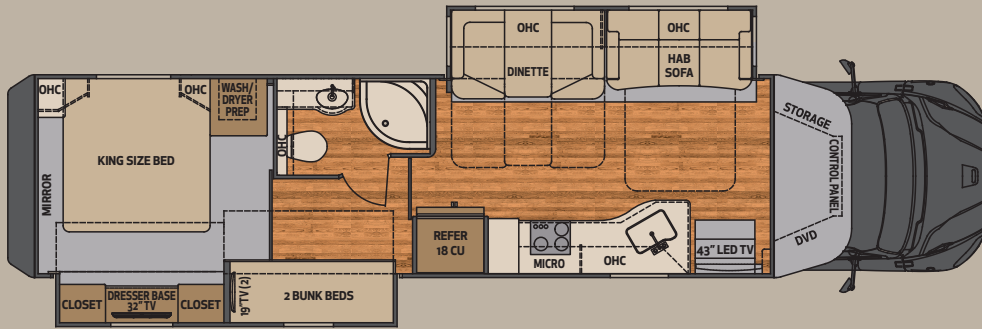
40VRB Granite Decor

BED AND BATH



40 VRB Shown in Granite Decor

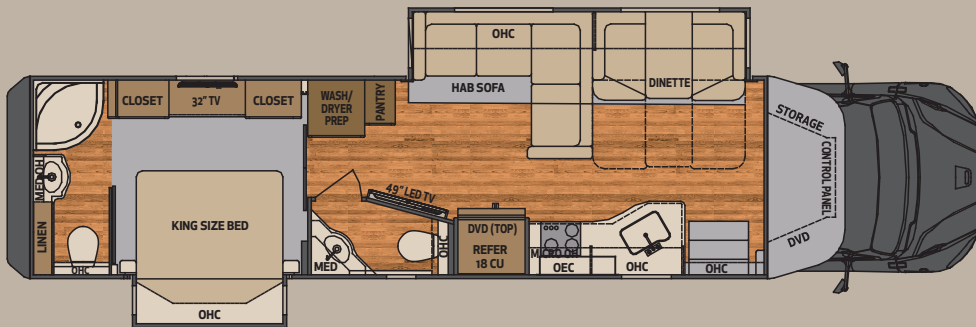
FLOORPLAN OPTIONS



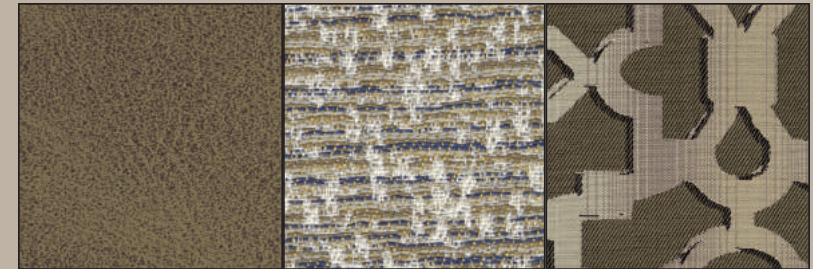
40VBH



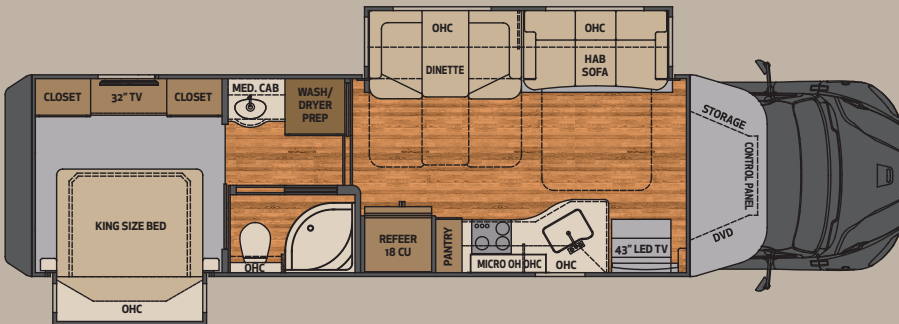
CAPPACINO DECOR



40VRB



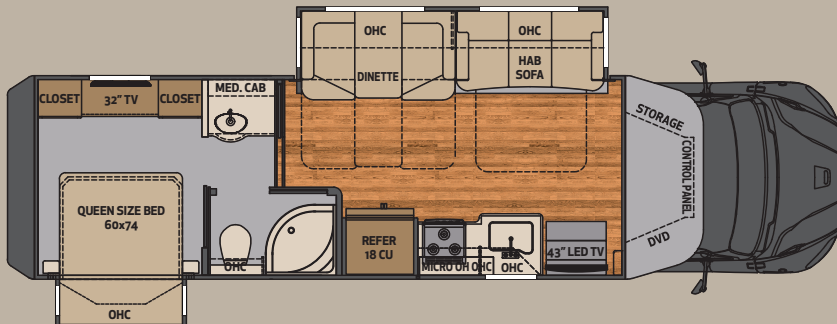
HAZELNUT D OR



36VSB



GRANITE DECOR



34VQB

	VBH & VRB	VSB	VQB
Overall Length VBH & VRB	40' 2"	36'	33' 11"
Exterior Width	99 - 1/4"	99 - 1/4"	99 - 1/4"
Wheelbase 40'	309"	285"	267"
Overall Exterior Height (Includes 15,000 BTU Roof A/C)	12' 8"	12' 8"	12' 8"
Interior Height	7' 0"	7' 0"	7' 0"
Fuel Capacity	100 Gal	100 Gal	100 Gal
Fresh Water	150 Gal	150 Gal	150 Gal
Grey Water	75 Gal	75 Gal	75 Gal
Black Water	75 Gal	75 Gal	75 Gal
LPG Capacity	24.2 Gal/80 lbs.	24.2 Gal/80 lbs.	20.3 Gal/66 lbs.

STANDARD AND OPTIONAL FEATURES

Construction

- Smooth High Gloss One Piece Fiberglass Wall Surface
- 2" Vacuum Laminated Sidewalls w/ Welded Tubular Aluminum Framing
- 1.5" High Density Foam Insulation in Sidewalls & Roof
- Two Piece Molded Rear Cap and Bumper System
- Welded Tubular Aluminum Roof Truss System with Framed Cutouts
- One Piece Crowned Fiberglass Roof Surface
- "Super Sandwich" Floor Construction Consisting of:
 - (1) 3/4" Fir Plywood Deck Over 2 x 4 Wood-Framed Residential Floor
 - (2) 2" Welded Tubular Steel Floor Joist System
 - (3) 3" Steel Longitudinal Floor Beams
- 3" Premium Grade Roxul Sound Deadening and Thermal Insulation in Floor
- Galvanized Steel Vapor Barrier

Exterior Features

- Full Body Paint Package with Clearcoat
- LED Brake and Turn Lights
- Carefree of Colorado Lateral Arm Awning w/ LED Lights
- Aluminum Clad Slide Toppers
- Keyless Entry System
- Frameless Tinted Windows with Tilt-opening Design and Screens
- Exterior Entertainment Center w/ Samsung 32" LED TV, AM/FM/CD/DVD
- Fully Automatic 4 Point Hydraulic Leveling
- 20,000 lb. Hitch
- 7 way Flat Pin Tow Connection

Entertainment Systems

- Garmin Infotainment System w/ RV Specific Navigation
- Portable Touch Screen Tablet w/ WIFI Connectivity
- JBL Custom Tuned Cab Sound System
- Color Side and Rear View Cameras
- Samsung Home Theater System with BluRay Player and Remote
- Samsung 43" LED TV in Living Area
- Samsung 32" LED TV in Bedroom w/ BluRay Player
- In-Motion Satellite System
- Pre-wired for HD Satellite System
- Sirius / XM ready (Requires Subscription)
- Bluetooth Enabled

Interior Features and Décor

- Ultra-Soft Touch Furniture Package, Sofa, Dinette and Driver/Passenger Seats
- Ultra-Soft Touch Sofa with Queen Size Slide-a-bed Sleeper
- Solid Maple Hardwood Cabinets, Maple Hardwood Doors with Hidden Hinges
- Soft Close Full Extension Ball Bearing Drawer Guides
- Polished Solid Surface Countertops and Dinette Table
- Stonecast Deep Bowl Kitchen Sink with Solid Surface Covers
- Armstrong Luxe Plank LVT Flooring (Kitchen, Hallway, and Bath)
- Energy Efficient LED Flush Mount Ceiling Lighting Throughout
- LED Floor Level Lighting Throughout
- King Size iRelax Memory Foam Mattress, 72" x 74" (NA 34VQB)
- Full Length Wardrobe with Removable Bottom Shelf
- 30" x 80" Bunk Beds with Privacy Curtains (40VBH)
- Lighted Entry Step area with Rubber Step Treads and Under-step Storage

Electrical Systems

- 8KW Onan Quiet Diesel Generator with Auto Generator Start System
- 2,000 Watt Inverter
- (3) Group 27 AGM House Batteries
- 50 Amp Electrical Panel
- Multiplex Lighting System
- Deluxe LED Lighting System
- 12V Holding Tank Heaters on Grey & Black Tanks
- USB Charging in Bedroom and Living Room
- Pre wired for Solar Charging System

Bath Systems & Amenities

- Deluxe Hardwood Vanity, Medicine & Linen Storage Cabinets
- Color Coordinated Fiberglass Shower w/ Glass Door
- Shower Skylight
- Whole House Water Filter System
- Black Tank Flush System
- Porcelain Electric Macerator Toilet

Chassis and Cab

- Freightliner M2, 34,300 GVWR, 60,000 GCWR
- Cummins L9 Engine 350HP, 1150 LB. FT. of Torque
- Allison TRV3200 Electronic Six Speed Transmission
- Front 295/75R22.5 Radial Tires, 16 Ply
- Rear 295/75R22.5 Radial Tires, 14 Ply
- Accuride Polished Aluminum Wheels with Center Caps
- Airliner Rear Air Suspension
- Air Brakes with 4 Wheel ABS
- Jacobs C-Brake, Two-Stage with Dash Switch
- Dual 50 Gallon Aluminum Fuel Tanks, Total of 100 Gallon Capacity; 6 Gallon DEF Tank
- Air Ride Driver and Passenger Seat Pedestals with Heat and Swivels
- Power Windows and Door Locks
- Power/Heated Remote Control Mirrors
- Tilt & Telescoping Steering Wheel
- Premium Freightliner Heat/Sound Insulation
- Carpeted Floor Mats

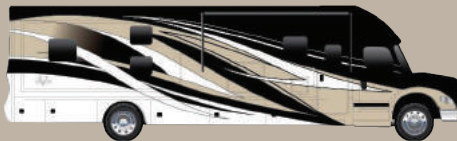
Appliances & Utilities

- 18 cu. ft. Stainless Steel French Door Refer w/ Icemaker
- Recessed LP Sealed 3 Burner Stainless Steel Cooktop
- Stainless Steel Convection Microwave Oven
- 10 Gallon LP/110V Electric Water Heater
- 34,000 BTU LP Gas Furnace with Electronic Ignition
- (2) 15,000 BTU Low Profile Roof A/C with Heat Pumps & Chill Grill

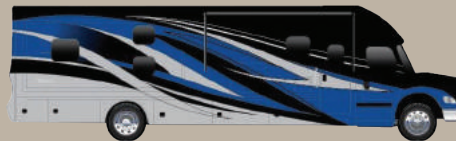
Popular Options

- Stackable Washer/Dryer (NA 34VQB)
- 60" x 74" Queen Bed w/ iRelax Memory Foam Mattress (STD in 34 VQB)
- Table with Credenza and Free Standing Dinette Chairs
- Pair of DVD Monitors (40VBH Model Only)
- Dometic 13 cu. ft. LP/110V Refrigerator with Icemaker
- Power Retract Water Hose Reel
- Exterior Quick Disconnect LP Line (For Gas Grill) with Locking Door
- Armstrong Luxe Plank Flooring in Bedroom IPO of Standard Carpeting
- Theatre Seating IPO Standard Sofa
- 88" Straight Sofa IPO L-Shaped Sofa (40VRB only)
- Shaw Satellite (Canadian Only)
- Diamond Shield Paint Protection
- Brake Controller

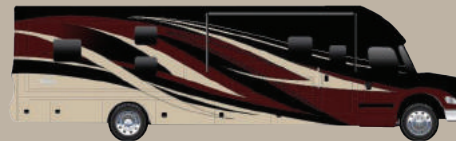
EXTERIOR PAINT OPTIONS



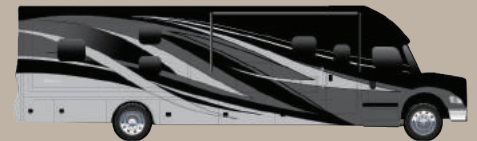
COASTLINE



SKYLINE



HEAT WAVE



INGOT

PERFORMANCE-DESIGNED RV'S FOR WORK, PLAY OR BOTH.



▶ ABOUT REV GROUP

REV Group connects and protects communities with vehicles that have long served the bus, emergency, recreation and specialty markets. Together, REV Group and its 29 vehicle brands provide unmatched service, selection and support to passengers around the clock and around the world.

Renegade
RV

Address: 52216 SR 15, Bristol IN 46507
Phone: 888.522.1126 • RenegadeRV.com

Features and options may vary from depictions without notice

DESIGNED FOR ^{YOUR} LIFE

YOUR RENEGADE DEALER: