

CEDAR CREEK CHAMPAGNE EXTENDED STAY FIFTH WHEELS



Cedar Creek

CHAMPAGNE



**EXTENDED STAY
APPROVED**

The Smart Choice for the Experienced RV'er





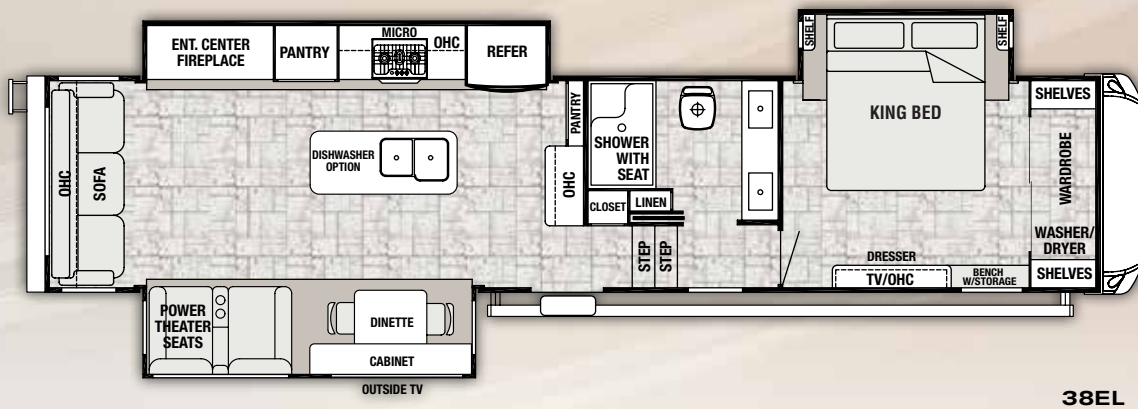
Cedar Creek

CHAMPAGNE

Step up to a Champagne Edition fifth wheel, to experience a higher level of comfort. Champagne is designed with a simple philosophy in mind – luxury above all else. Tasteful, high sheen Ashley Grey cabinetry compliments residential appliances for an inviting interior that sets a warm tone for an extended stay.



The standard 88" Franklin™ hide-a-bed sofa in the 38EL conceals a full queen size mattress and includes power theater seating. This floorplan features a 55" 4K Smart TV, 36" fireplace, marble cast backsplashes, Cuisinart® Wine Cellar and Chef's Collection appliances. The Fisher/Paykel Dishdrawer® dishwasher is a convenient option. Shown with Sapphire Moon valances and Almond Franklin furniture.



MODEL	38EL
GWWR	18,000 lbs.
Hitch Weight	2,710 lbs.
UVW	13,989 lbs.
CCC	4,011 lbs.
Exterior Length	41' 7"
Exterior Height	13' 5"
Exterior Width	96"
Fresh Water with on demand hot water system	57 gal.
Gray Water	80 gal
Black Water	40 gal.

38EL

38EL

CHAMPAGNE CONSTRUCTION

SIDE WALLS R-VALUE (R-11*)

- ◆ Handmade 2" x 2" - 16" on center (or less), sidewalls with individually fastened custom "L" brackets combined with 3M® Silaprene adhesives for a stronger frame without welding or lamination. (475 PSI at 2" per minute)
- ◆ "True" High Gloss Classic Gelcoat on all exteriors - the best of the best in fiberglass. Don't accept "hi-gloss fiberglass" or "gel-coated" sidewalls - only True gelcoat stands the test of time.

- ◆ Silaprene is a strong adhesive with a 475 PSI pull ratio that resists failure when exposed to heat, cold, moisture and road chemicals.
- ◆ Sidewalls are bolted to the floor with 5/16" x 6-1/2" carriage bolts at each outrigger
- ◆ Glued R-7 insulation expanded to its full capacity within the sidewall frame
- ◆ Slide rooms insulated on all five sides

FLOORS R-VALUE (R-45*)

- ◆ 3" Aluminum frame floor with in-floor heat ducting and radius "L" brackets combined with 3M® Silaprene adhesives

- ◆ Cambered 12" I-beam "Z" frame with large support outriggers and full length welds
- ◆ 5/8" Tongue and groove plywood floor is attached to the aluminum frame with Silaprene adhesive and screwed every 6"
- ◆ Fully enclosed 4' x 8' ABS removable panels for easier access into the underbelly. We use wood stringers to attach with no holes in the frame
- ◆ 12 Volt tank heaters on all tanks
- ◆ Radiant shield insulation
- ◆ Triple layer insulation enhances the protective values of plywood, vinyl, carpet, carpet pads, tank heaters, etc.
- ◆ Water lines are protected inside the floor and away from exterior walls

ROOF R-VALUE (R-40*)

- ◆ Full length 3/8" wood roof decking for a full walk-on roof
 - ◆ Triple layer insulation
 - ◆ Aluminum Truss Rafters on 16" center. 8" wide, circular "racetrack" AC duct system, combined with our HP (High performance) air conditioner, increases the cold air flow by 30% in all Cedar Creek Champagne Edition models.
 - ◆ Standard second Whisper Quiet roof mount air conditioner (Bedroom)
 - ◆ Two ply - Tuff Ply rubber roof membrane
 - ◆ Roof is bolted to sidewall with 5/16" x 3-1/2" carriage bolts
 - ◆ Radiant shield insulation extends around to the bottom of the front cap - R Value 40,
 - ◆ Attic Vent
- *Equivalent R-Value

Dexter®
Nev-R-Adjust®
Brakes Standard

Dexter® E-Z Flex®
Suspension
Standard



PERFORMANCE

Dexter® Axles/Brakes Suspension For Performance and Safety

- ◆ Nev-R-Adjust® Brakes are always properly adjusted for improved stopping power in half the distance
- ◆ E-Z Flex® rubber equalization system with 1/2" link plates and eight grease zerks per side
- ◆ Heavy duty axles with bronze bushings in shackles (No plastic bushings like our competitors)
- ◆ 17.5" "H" rated tires on 8000 lb. Dexter® Axles



True High Gloss Classic gelcoat exteriors and end walls. Truly the best of the best in fiberglass. Accept no imitations.



COLD ROOM TESTED TO 0°F WITH STANDARD INSULATION AND HEATING PADS.



The standard KING WiFiMAX WiFi router/range extender creates your own personal, private and secure WiFi network, just like at home. It can be configured to connect to available networks and devices with password access

Another feature that we've taken from residential construction is our super quiet "HP" (High performance) 15,000 BTU air conditioning system, which includes a larger compressor and cold air returns! This means 30% more air is being forced into the coach than a standard 15,000 air conditioner.



All Champagne fifth wheels are now prewired for an optional Furion rear wireless camera or three camera security system, with voice activation and night vision. These back-up and security systems utilize wireless digital technology for a clearer view and enhanced safety.





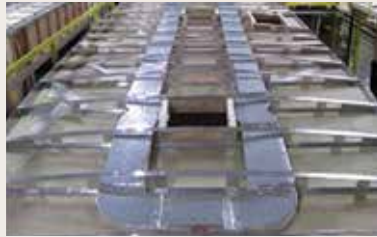
Residential glass wool insulation, designed by nature.



Cedar Creek's famous residential all aluminum super-structure (Roof, sidewalls, and floor) on 16" centers or less.



3" Aluminum floor studs, heat duct and 5/8" tongue and groove plywood floor.



High-Performance Quiet Zone™ ducted air system with a 15,000-BTU HP air conditioner, a residential-style return air duct system and comfort control center, creates a dynamic combination for powerful results. It's the most efficient AC system in existence with both the industry's highest performance AC and the industry's lowest power draw, with second bedroom air conditioner too!



Aluminum window frames.



R-38 Radiant shield therma-foil wrap through ceilings, underbellies and under front caps.



CEDAR CREEK OUTDOOR PARTY CENTER

This optional outdoor sliding workstation is equipped with a folding countertop, a flat top griddle, a 110V refrigerator, and a hidden 50" LED TV on a pivoting mount. (N/A 38EFK)

CHAMPAGNE EDITION PACKAGE

- ◆ "True" Gelcoat painted front cap with clear coat
- ◆ Cedar Creek All Aluminum Super Structure
- ◆ "True" high gloss gelcoat exterior
- ◆ "True" Gelcoat Rear Cap
- ◆ Upgraded Champagne LED lighting package
- ◆ Automatic 6-point hydraulic leveling system
- ◆ Keyless Entry
- ◆ 12V Powered 50 Amp cord reel
- ◆ Dual battery slide out trays
- ◆ MORryde® 5-tier "Step Above" entry stairs
- ◆ Second 15,000 BTU high capacity, low profile, ducted air conditioner with bigger compressor
- ◆ Exterior storage compartment with 32" Jensen TV on swing arm
- ◆ Continuous, on demand, hot water system
- ◆ Door side cold water port
- ◆ 1-1/4" Bike hitch receiver
- ◆ New In-Command Control System with Smart Phone remote control app
- ◆ USB ports in Kitchen, Bedroom and Living Room
- ◆ High sheen Maple cabinet doors and drawers
- ◆ Furrion Chef's Collection with Gas Cooktop
- ◆ Maximum storage pantry with full extension drawer guides (38EL Only)
- ◆ Solid surface countertops with large 60/40 stainless steel under mounted sinks
- ◆ Island overhead infinity light
- ◆ Congoleum® Carefree Designer Series flooring throughout (Except dining room slide)
- ◆ 20 Cu. ft. stainless steel, electric refrigerator with double drawer freezers and 1000 watt dedicated inverter
- ◆ Stainless steel 30" microwave oven
- ◆ Cuisinart® Wine Cellar refrigerator
- ◆ One-piece marble cast kitchen backsplash
- ◆ Dining table with (2) fixed chairs and (2) folding chairs with leaf extension
- ◆ Intra-Vac central vacuum system with automatic dustpan and new vac port in front storage compartment
- ◆ 12V Jensen home theater system with soundbar, J-Control app for your smart phone, and (2) outside speakers
- ◆ 48" Fireplace with remote controlled regulated heat
- ◆ 55" 4K TV on swing arm in living room
- ◆ Shaw® carpet in living room slide
- ◆ Deluxe day/night roller shades
- ◆ Franklin® power theater seating
- ◆ Franklin® 88" deluxe hide-a-bed sofa (38EL only)
- ◆ Champagne Dreamer 10" luxury king mattress

- ◆ Cadet regulated wall heater in bedroom
- ◆ 32" LED TV in bedroom
- ◆ Quick disconnect LP gas line
- ◆ King WiFiMax campground WiFi extender
- ◆ Pre-wired for optional safety and security cameras (One or three)

STANDARD FEATURES

- ◆ **DEXTER® Safety and Performance Package**
 - Nev-R-Adjust® brakes are always properly adjusted for improved stopping power in half the distance
 - E-Z Flex™ rubber equalization system with 1/2" link plates and (8) grease zerks per side
 - E-Z Lube®, heavy duty axles with bronze bushings in shackles
- ◆ 17.5" "H" rated tires on 8,000 lb. Dexter® axles
- ◆ Hehr® thermopane automotive frameless windows with tinted safety glass
- ◆ A & E electric awnings with LED night lighting
- ◆ 1-1/4" Thick, insulated, compartment doors with slam door latches and dedicated key lock
- ◆ 50 Amp service
- ◆ 65 Amp power converter
- ◆ Central docking station
- ◆ Satellite and cable hook-ups located in docking station wired into the living room and bedroom
- ◆ (9) Drawer tall boy bedroom dresser (38EL only)
- ◆ Ducted 15,000 BTU "HP" (High performance) air conditioner with larger compressor, circular motion 8" ductwork and cold air returns
- ◆ Rear ladder
- ◆ Ceiling fan
- ◆ Valance with solid wood window frames throughout except bedroom
- ◆ Shaw® R2X stain and soil resistant carpeting in living room slide
- ◆ (2) Create-A-Breeze Fantastic fans with thermostats and rain sensors in the kitchen and bathroom
- ◆ Crown molding complimenting all overhead cabinets
- ◆ 48" Fiberglass residential shower with large seat, upgraded shower head, wrap around storage ledges and triple sliding glass doors
- ◆ 12V Battery disconnect
- ◆ LP gas/carbon monoxide detector
- ◆ Smoke detector
- ◆ Walk-in front closet (N/A 38EFK)
- ◆ Washer/dryer prep
- ◆ One year of SafeRide RV roadside assistance
- ◆ Membership to the Forest River Owner's Group

OPTIONS

- ◆ Full body paint with clear coat smooth wall finish (Kristal, Midnight Mist and Sandalwood)
- ◆ Second electric 12' Slide room awning (N/A 38EFK)
- ◆ LP generator prep
- ◆ 5.5 Onan® Marquis Gold LP generator with generator prep
- ◆ 15,000 BTU high capacity, low profile, third air conditioner with power management system
- ◆ Heat pump on main air conditioner
- ◆ 12 Gal. gas/electric water heater IPO On Demand
- ◆ 200 Watt solar panel with solar prep
- ◆ Black A&E awning toppers
- ◆ Carpet in the bedroom
- ◆ Carpet in the living room
- ◆ 18 Cu. ft. stainless steel gas/electric refrigerator (N/A 38EFK)
- ◆ Induction cooktop IPO gas cooktop
- ◆ Splendide® front loading washer and dryer
- ◆ Fisher & Paykel stainless steel dishwasher in island
- ◆ 110V Bedroom refrigerator in front closet (N/A 38EFK)
- ◆ (2) La-Z-Boy® recliners IPO power theater seating (N/A 38EFK)
- ◆ Matching Chottoman with storage
- ◆ Queen mattress IPO king
- ◆ King® dish satellite system with 2 receivers and 3 viewing areas
- ◆ Trailair™ air ride hitch coupler
- ◆ Wireless rear observation camera only
- ◆ Wireless rear observation rear camera with two side cameras for safety and security - mounted
- ◆ Cedar Creek Outdoor Party Center (38EL only)



38EFK

The 38EFK residential dream kitchen features a Furrion Chef's Collection gas cooktop with a glass door oven, a stainless steel 30" microwave oven, and solid surface countertops. There's plenty of storage and enough counter space for gourmet cooks to excel. High sheen Ashley Grey cabinetry and a new island Medallion ceiling fixture with Infinity lighting add a touch of elegance. Cedar Creek Champagne is the smart choice for the experienced RV'er.



The Cuisinart® Private Reserve® Wine Cellar quietly and efficiently maintains the ideal storage temperature, (between 39°-68°F), to preserve the quality of your favorite wines. This thermoelectric cooling system is touchpad controlled, has a stainless finish and soft interior lighting.



Champagne's Z-frame, heated front storage compartment provides over 100 cu. ft. of storage and includes an extra vacuum port for outside clean-ups.



The iN-Command® Control System is a central hub for RV operations. Control and monitor many systems via the panel or smart phone app.

DÉCOR

RADIANCE



SAPPHIRE MOON





Franklin™ residential furnishings feature exclusive “Wow” gel injected foam and premium springs for the ultimate in comfort. Both the foam and mechanism have a limited lifetime warranty. Available in easy-to-clean Graphite, Almond or Cashmere microfiber.

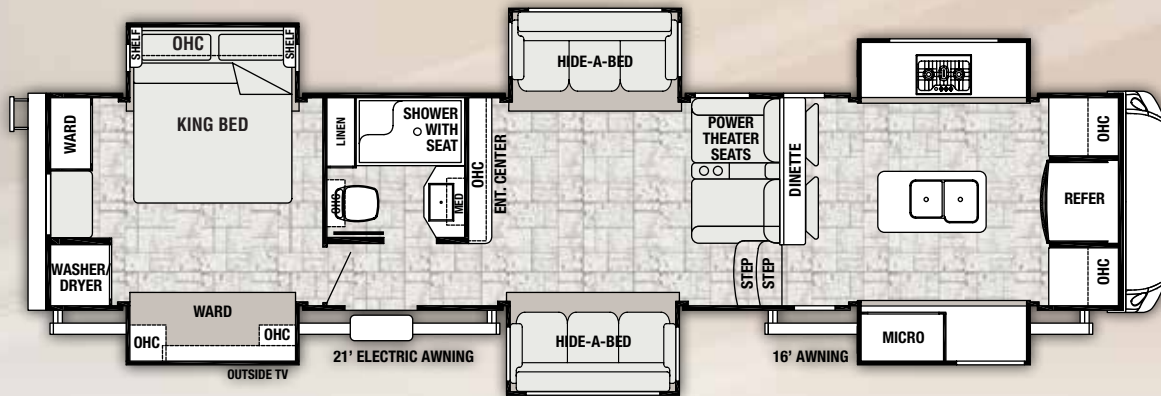


38EFK



The generous master bedroom includes a “Champagne Dreamer” residential, 10” thick mattress, with a fitted bedspread and pillows. Additional features include: A 32” Jensen Television, King WiFiMax signal booster, washer/dryer prep, Congoleum™ Designer Series® vinyl floor covering and Shaw Carpeting.

38EFK includes two outside electric awnings for 37 feet of shaded comfort, that can also be controlled from the In-Command smart phone app.



38EFK

MODEL	38EFK
GVWR	18,000 lbs.
Hitch Weight	2,700 lbs.
UVW	14,295 lbs.
CCC	3,705 lbs.
Exterior Length	41' 8"
Exterior Height	13' 5"
Exterior Width	96"
Fresh Water with on demand hot water system	57 gal.
Gray Water	80 gal.
Black Water	40 gal.



KRISTAL



MIDNIGHT MIST

CEDAR CREEK CHAMPAGNE FULL BODY PAINT

Full Body Paint, adorned with Cedar Creek Champagne graphics, will turn heads wherever you travel. These bold new exterior options are offered along with our Standard Graphics.

24/7 EMERGENCY ROADSIDE ASSISTANCE WITH VEHICLE PURCHASE*

TOWING
JUMP-STARTS
TIRE CHANGES
FLUID DELIVERY
LOCKOUT
SERVICE

WINCH-OUT
MOBILE MECHANIC
TECHNICAL
SUPPORT
DEALER LOCATOR
SERVICES



*VALID FOR 1 YEAR FROM DATE OF PURCHASE

GVWR (Gross Vehicle Weight Rating) - is the maximum permissible weight of the unit when fully loaded. It includes all weights, inclusive of all fluids, cargo, optional equipment and accessories. For safety and product performance do NOT exceed the GVWR.

GAWR (Gross Axle Weight Rating) - is the maximum permissible weight, including cargo, fluids, optional equipment and accessories that can be safely supported by a combination of all axles.

UVW (Unloaded Vehicle Weight)** - is the typical weight of the unit as manufactured at the factory. It includes all weight at the unit's axle(s) and tongue or pin and LP Gas. The UVW does not include cargo, fresh potable water, additional optional equipment or dealer installed accessories.

*Estimated Average based on standard build optional equipment.

CCC (Cargo Carrying Capacity)** - is the amount of weight available for fresh potable water, cargo, additional optional equipment and accessories. CCC is equal to GVWR minus UVW. Available CCC should accommodate fresh potable water (8.3 lbs per gallon). Before filling the fresh water tank, empty the black and gray tanks to provide for more cargo capacity.

**Estimated average based on standard build optional equipment.

Each Forest River RV is weighed at the manufacturing facility prior to shipping. A label identifying the unloaded vehicle weight of the actual unit and the cargo carrying capacity is applied to every Forest River RV prior to leaving our facilities. The load capacity of your unit is designated by weight, not by volume, so you cannot necessarily use all available space when loading your unit.

CUSTOMER SATISFACTION



www.ForestRiverBuyLocal.com

All information contained in this brochure is believed to be accurate at the time of publication. However, during the model year, it may be necessary to make revisions and Forest River, Inc., reserves the right to make all such changes without notice, including prices, colors, materials, equipment and specifications as well as the addition of new models and the discontinuance of models shown in this brochure. Therefore, please consult with your Forest River dealer and confirm the existence of any materials, design or specifications that are material to your purchase decision. ©2018 Cedar Creek, a Division of Forest River, Inc., a Berkshire Hathaway company. All Rights Reserved. 12/18



PRE-DELIVERY INSPECTION FACILITY

20,000 square feet of quality assurance. The bare essentials for a premium product. This state-of-the-art facility gives immediate daily feedback to production for quality assurance in every unit built.



Learn More
Scan this barcode using a QR Reader on your smart phone to learn more about Forest River.



A Berkshire Hathaway company.

FREE MEMBERSHIP
to Forest River Owners' Group

www.forestriverfrog.com



Cedar Creek
CHAMPAGNE

The Smart Choice for the Experienced RV'er
FOREST RIVER INC. ♦ CEDAR CREEK DIVISION

501 Hawpatch Road ♦ Topeka, IN 46571

Phone: 260-593-2404 ♦ Fax: 260-593-2447

Parts & Service Phone: 260-593-4000

On The Web at: www.forestriverinc.com/cedarcreek

INTERACTIVE MOBILE MANUALS

Download our Cedar Creek mobile app or visit our dynamic online manual to enhance your ownership experience. These interactive options provide incredible ease and insight into use, maintenance and enjoyment of your Cedar Creek product. Ranging from "How-To" videos, pictures and illustrations of various components, systems and features, to fully searchable content and downloadable PDFs for individual component owner's manuals, answers are always just a click away.



View the online manual at www.forestriverinc.com/cedarcreek/ownersmanuals, or download our FREE app from the App Store or Google. Play!

YOUR CEDAR CREEK DEALER