

FIFTH WHEELS BY DUTCHMEN

# ASTORIA



ASTORIA

FIFTH WHEELS BY



**Dutchmen**<sup>®</sup>

*Legendary Innovation. Trailblazing Value.*

# ASTORIA

GET READY FOR A GREAT ADVENTURE.

Astoria is an all-new, fifth wheel delivering highly visible, value-driven standard features. The inclusions and design are timeless, yet forward trending to address the growing demand for a turnkey option by consumers who want all the features and require the highest quality.

## Standard in Every Astoria.



All Weather  
Thermal  
Package



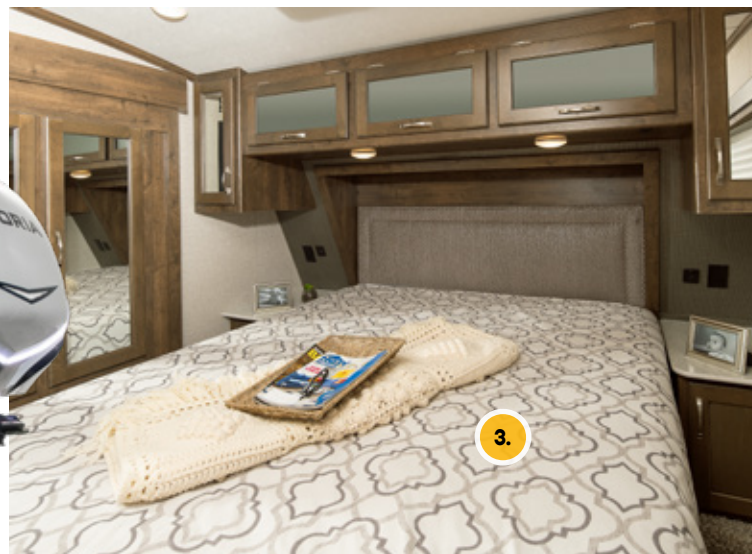
One-touch  
auto leveling



Premium  
Entry Steps

## The Next Generation of Affordable Luxury.

1. LARGE STAINLESS STEEL APPLIANCES
2. AMPLE STORAGE SPACE
3. 60X80 RESIDENTIAL QUEEN BED
4. ONE-TOUCH AUTO LEVELING SYSTEM
5. OVERSIZED PASS THROUGH STORAGE W/ LIGHTS

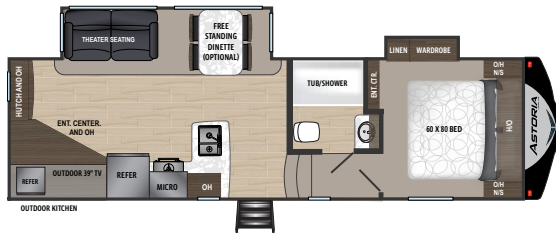




ASTORIA 3003RLF | GUNMETAL

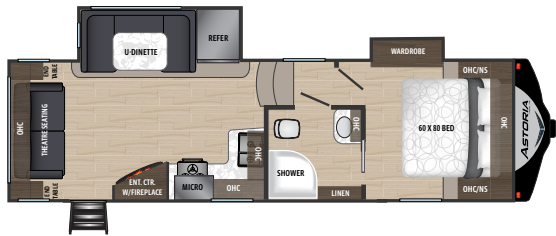


## Astoria Floorplans



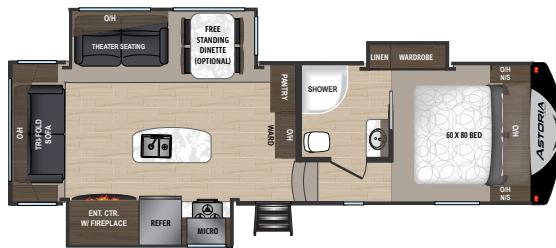
**ASTORIA | 2503RF**

Ext. Length: 30' 0" Weight: 8,090 lbs. Sleeps: 4-6



**ASTORIA | 2513RLF**

Ext. Length: 29' 6" Weight: 7,759 lbs. Sleeps: 4-6



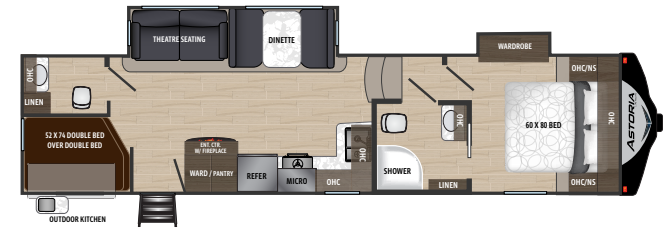
**ASTORIA | 2953RLF**

Ext. Length: 33' 4" Weight: 9,095 lbs. Sleeps: 6-8



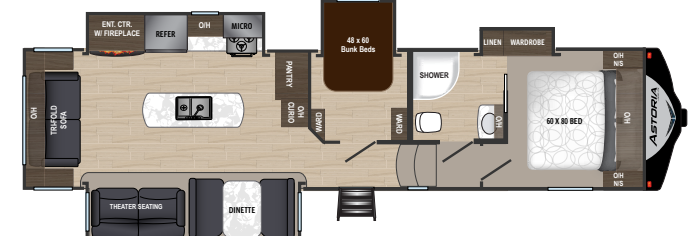
**ASTORIA | 3003RLF**

Ext. Length: 34' 5" Weight: 8,800 lbs. Sleeps: 6-8



**ASTORIA | 3123BHF**

Ext. Length: 35' 4" Weight: 9,096 lbs. Sleeps: 8-10

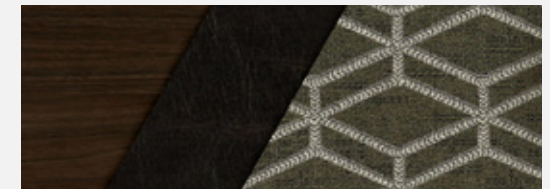


**ASTORIA | 3273MBF**

Ext. Length: 36' 0" Weight: 9,934 lbs. Sleeps: 8-10

## Interior Décor

### BRINDLE



### GUNMETAL



**DISCLAIMER:** Product information is as accurate as possible as of the brochure publication date. All features, floorplans and specifications in this brochure are subject to change without notice. Please consult Dutchmen's website at [www.Dutchmen.com](http://www.Dutchmen.com) for current product information and specifications. Tow Vehicle Disclaimer. **CAUTION:** Owners of Dutchmen recreational vehicles are solely responsible for the selection and proper use of tow vehicles. All customers should consult with a motor vehicle manufacturer or their dealer concerning the purchase and use of suitable tow vehicles for Dutchmen products. Dutchmen disclaims any liability or damages suffered as a result of the selection, operation, use or misuse of a tow vehicle. DUTCHMEN'S LIMITED WARRANTY DOES NOT COVER DAMAGE TO THE RECREATIONAL VEHICLE OR THE TOW VEHICLE AS A RESULT OF THE SELECTION, OPERATION, USE OR MISUSE OF THE TOW VEHICLE. REFERENCE DUTCHMEN MANUFACTURING OWNERS MANUAL FOR LIMITED WARRANTY DETAILS.

# Astoria Standards and Options

## PREMIUM PACKAGE - EXTERIOR FEATURES

13,500 BTU Ducted AC  
 30# LP Gas Bottles  
 Battery Disconnect  
 Oversized Dark Tinted Safety Glass Windows  
 Easy Lube Axles  
 Friction Hinge Entry Door  
 Large Entry Assist Handle  
 LP Quick Disconnect (on outside kitchen models)  
 Magnetic Baggage Door Catches  
 Exterior Shower  
 Outside Speakers w/ LED Lights  
 Painted Fiberglass Front Cap w/ LED Lights  
 Hardwood Maple Cabinetry  
 Patio & Hitch Lights  
 Power Awning w/ LED Lights  
 Power Landing Gear  
 Slam Latch Baggage Doors

Spare Tire Carrier  
 TV Antenna  
 Aluminum Wheels  
 Back Up Camera Prep  
 Black Tank Flush  
 Fiberglass Exterior  
 Radial Tires  
 Solar Prep  
 Roto-Flex Pin Box  
 2" Rear Receiver Hitch

## PREMIUM PACKAGE - INTERIOR FEATURES

35k BTU Furnace  
 6 Gallon Gas/Electric DSI Water Heater  
 60" x 80" Residential Mattress  
 8 Cubic Foot Double Door Refer  
 Bath Skylight  
 Bedroom TV Hookup

Bluetooth Stereo  
 Cable/Satellite TV Hookup w/ Booster  
 Centralized Utility Panel  
 Flush Mounted Glasstop Three Burner Range Top w/ 21" Oven  
 High-Rise Kitchen Faucet w/ Sprayer  
 Premium Audio Entertainment Soundbar  
 LED Accent Lighting  
 LED Lighting Throughout  
 Microwave  
 Night Shades Throughout Living Area  
 Porcelain Toilet  
 Range Hood with 12V Fan/Light  
 Skylight in Kitchen/Living Room  
 Stainless Steel Appliances  
 Tri-Fold Deluxe Sofa  
 Flush Floor Master Bedroom Construction

## MANDATORY OPTIONS

Premium Package  
 All Weather Thermal Package  
 Automatic Leveling System  
 High Definition LED TV  
 iN-Command Pro V1.05 w/ Touch Screen  
 Glass Mounted Fireplace w/ 5K BTU Furnace  
 Solid Surface Countertops  
 50 AMP Service w/ 2nd A/C Prep  
 Premium StepAbove Entry Step  
 Theatre Seating (model specific)  
 15,000 BTU A/C IPO 13.5

## EXTERIOR OPTIONS

2nd A/C - 13.5 BTU Non Ducted A/C

## INTERIOR OPTIONS

Free Standing Dinette & Chairs (model specific)

# Astoria Specifications

FLOORPLAN	DIMENSIONS			WEIGHTS (LBS.)			TANKS (GALS.)		
	*EXTERIOR TRAVEL LENGTH	EXTERIOR WIDTH	EXTERIOR HEIGHT (WITH A/C)	**AVERAGE SHIPPING WEIGHT	DRY HITCH WEIGHT	CARGO CARRYING CAPACITY	***FRESH WATER CAPACITY	GREY WATER CAPACITY	BLACK WATER CAPACITY
2503REF	30' 0"	8'	12' 5"	8,090	1,676	2,470	50	78	39
2513RLF	29' 6"	8'	12' 11"	7,759	1,454	2,191	50	39	39
2953RLF	33' 4"	8'	12' 3"	9,055	1,733	1,505	50	67	39
3003RLF	34' 5"	8'	12' 11"	8,800	1,700	2,700	50	78	56
3123BHF	35' 4"	8'	12' 3"	9,096	1,688	1,464	50	67	67
3273MBF	36' 0"	8'	12' 10"	9,934	1,592	2,066	50	67	39

\*Length is defined as the distance from the centerline of hitch pin/coupler to rear bumper of trailer. \*\*Our weights represent how most units are built, inclusive of many commonly-ordered options.

\*\*\*Fresh water capacity includes water heater capacity.

PO BOX 2000 • 2164 Caragana Court • Goshen, Indiana 46527 • Sales: 574.537.0600 • [www.dutchmen.com](http://www.dutchmen.com)

DISCLAIMER: Product information is as accurate as possible as of the brochure publication date. All features, floorplans and specifications in this brochure are subject to change without notice. Please consult Dutchmen's website at [www.Dutchmen.com](http://www.Dutchmen.com) for current product information and specifications. Tow Vehicle Disclaimer. CAUTION: Owners of Dutchmen recreational vehicles are solely responsible for the selection and proper use of tow vehicles. All customers should consult with a motor vehicle manufacturer or their dealer concerning the purchase and use of suitable tow vehicles for Dutchmen products. Dutchmen disclaims any liability or damages suffered as a result of the selection, operation, use or misuse of a tow vehicle. DUTCHMEN'S LIMITED WARRANTY DOES NOT COVER DAMAGE TO THE RECREATIONAL VEHICLE OR THE TOW VEHICLE AS A RESULT OF THE SELECTION, OPERATION, USE OR MISUSE OF THE TOW VEHICLE. REFERENCE DUTCHMEN MANUFACTURING OWNERS MANUAL FOR LIMITED WARRANTY DETAILS. ©2019 Dutchmen. ASTORIA-2019 Printed in U.S.A.



## 100% PRE-DELIVERY INSPECTION

At Dutchmen, quality is our standard. Every single Dutchmen RV that comes off the line receives its own pre-delivery inspection.



## THE INDUSTRY'S BEST RV WARRANTY

With this industry-best warranty, we take the guessing game out of what is and isn't covered.



## THE LEADER IN PARTS AND SERVICE

When only the best RV services will suffice, our industry-leading parts and service department is ready to help you get back on the road—and stay there longer than ever before.



[www.dutchmen.com](http://www.dutchmen.com)

Visit us online to see all of the Dutchmen brands, innovative models and spacious floor plans.